

Foam Board Straight Cutter by FoamWerks - WC6001

Instruction Manual



Provided by

MyBinding.com
When Image Matters.

Call Us at 1-800-944-4573

PROFESSIONAL SERIES

www.foamwerks.com

FOAMWERKS™
Model WC-6001

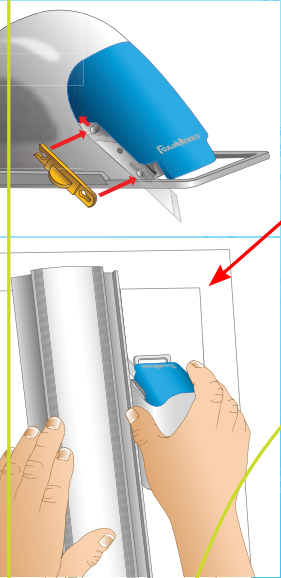
C Use blade:
Utiliser lame:
Utilizar navajas:
WC-5, WC-20, WC-50

 **FOAMBOARD STRAIGHT CUTTER**
 **CUTTER DROIT POUR PLAQUES DE MOUSSE**
 **CORTADORA DE BORDES RECTOS PARA UNICEL ESPUMADO**

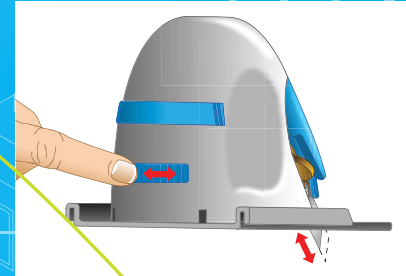
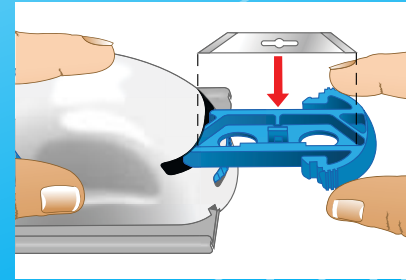
Cuts foamboard and Cellfoam 88™ by Midwest Products Co., Inc.

Give us your feedback at www.foamwerks.com
Votre avis nous intéresse. Contactez-nous sur le site
www.foamwerks.com

Por favor darnos sus comentarios al
www.foamwerks.com



NOTE: Use only scrap foamboard underneath the piece being cut.



Use with FoamWerks Channel Rail Model #W-3001. For detailed instructions, go to www.foamwerks.com

À utiliser avec FoamWerks Channel Rail #W-3001. Pour des instructions détaillées, visitez le site www.foamwerks.com

Usar con FoamWerks Sobre Riel Modelo #W-3001. Para obtener instrucciones detalladas, visite www.foamwerks.com

Made in China



Recyclable

LOGAN®
GRAPHIC PRODUCTS, INC.
Tools for Art - Tools for Life



0 08957 91163 9

Logan Graphic Products, Inc.
1100 Brown Street, Wauconda, IL 60084, USA
1 847 526 5515 • Toll Free 1 800 331 6232
J1564 8/09