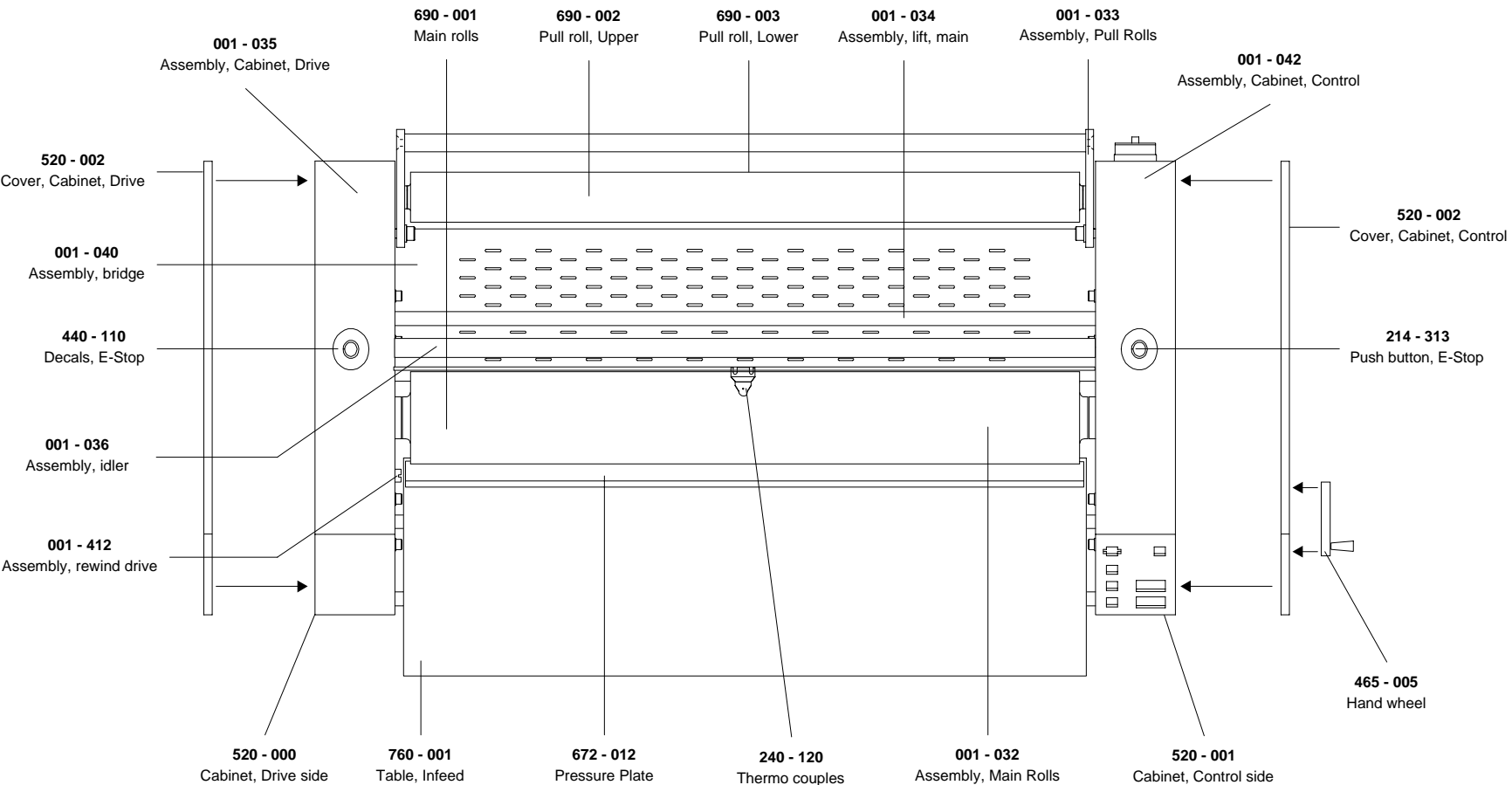


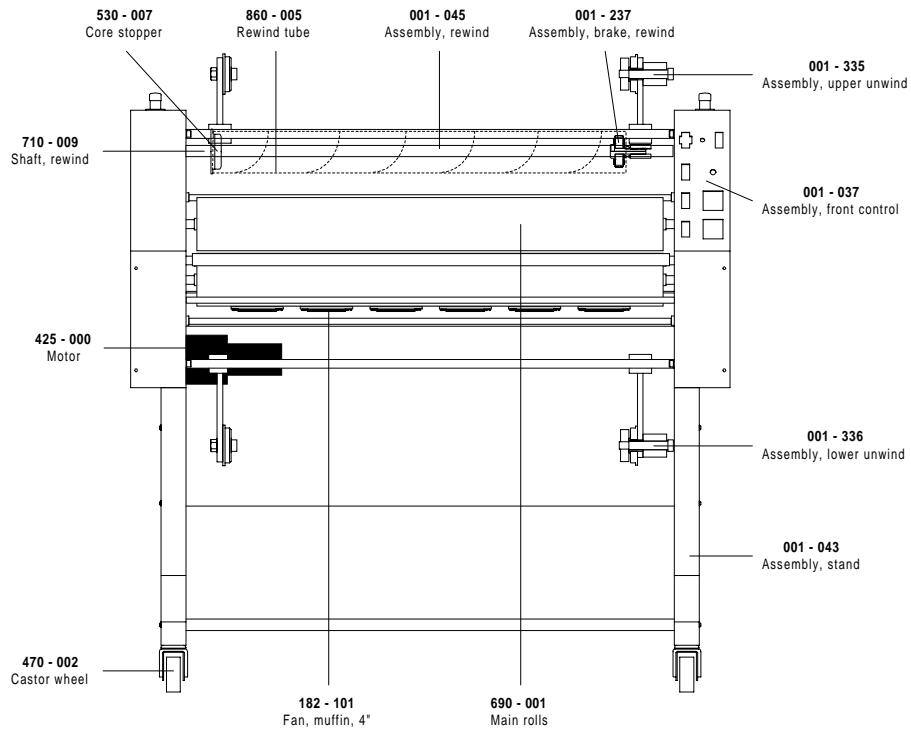
Falcon 36 SAE
Illustrated Parts Booklet
(000 - 002)

Available Options ;

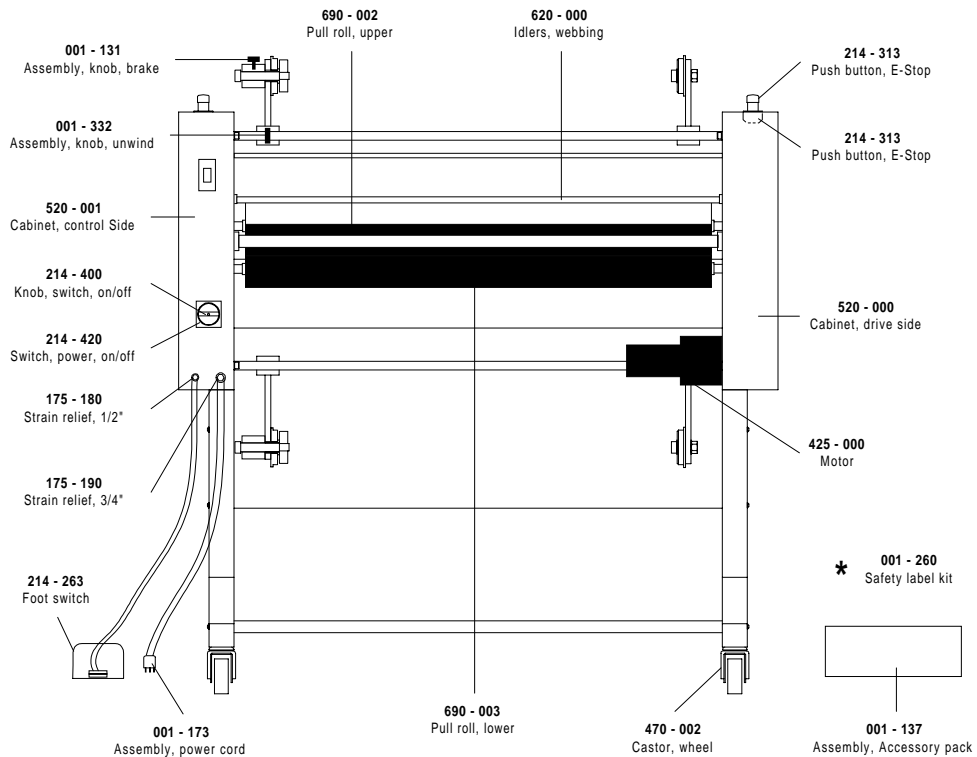
- 001 - 067 (Vacuum Table)*
- 001 - 321 (Paper Unwind)*
- 001 - 177 (Product Rewind)*
- 001 - 044 (Outfeed Slitters)*
- 001 - 174 (Outfeed Table)*
- 001 - 526 (39" Nip Height Castors)*

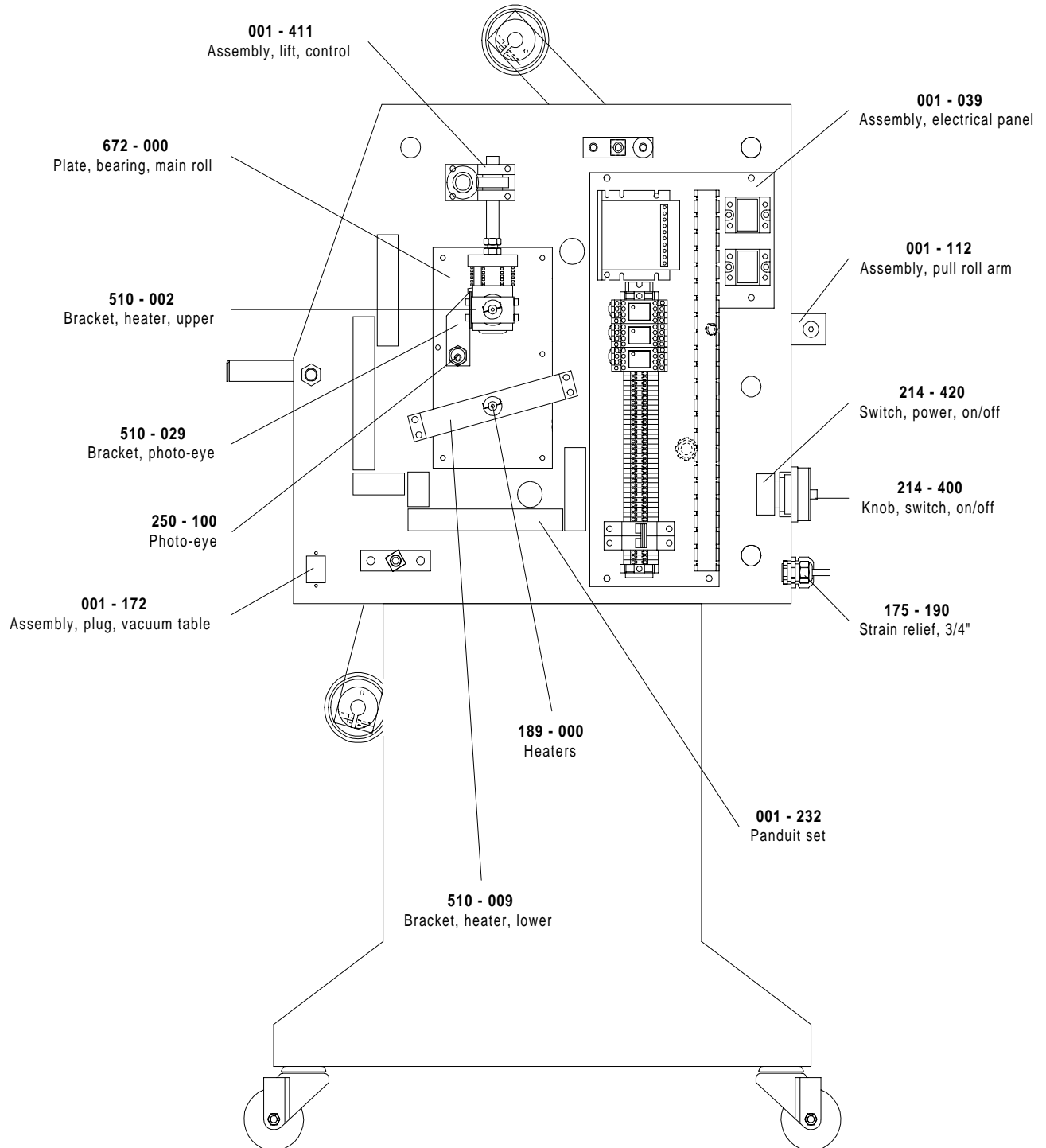


Front View

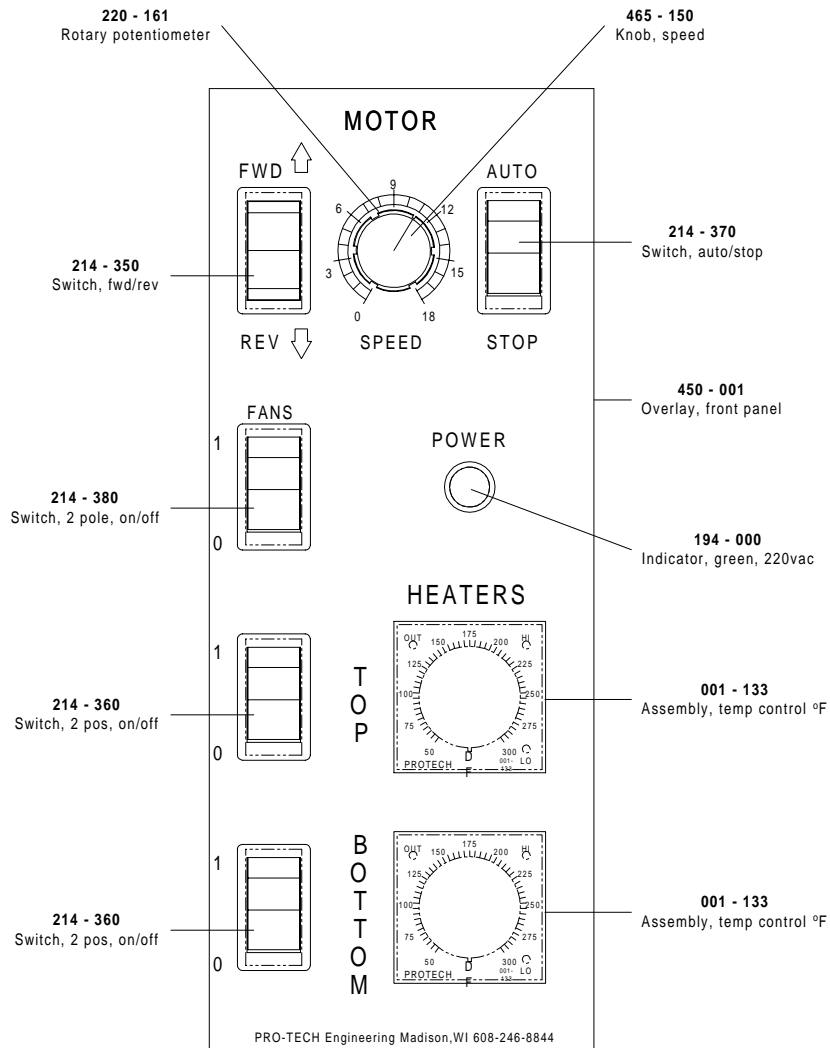


Rear View

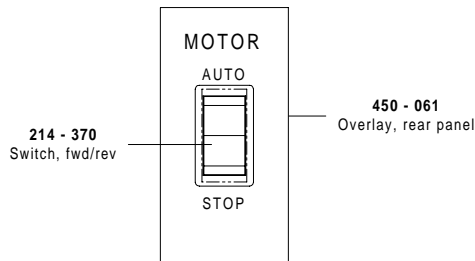





Front Control Panel

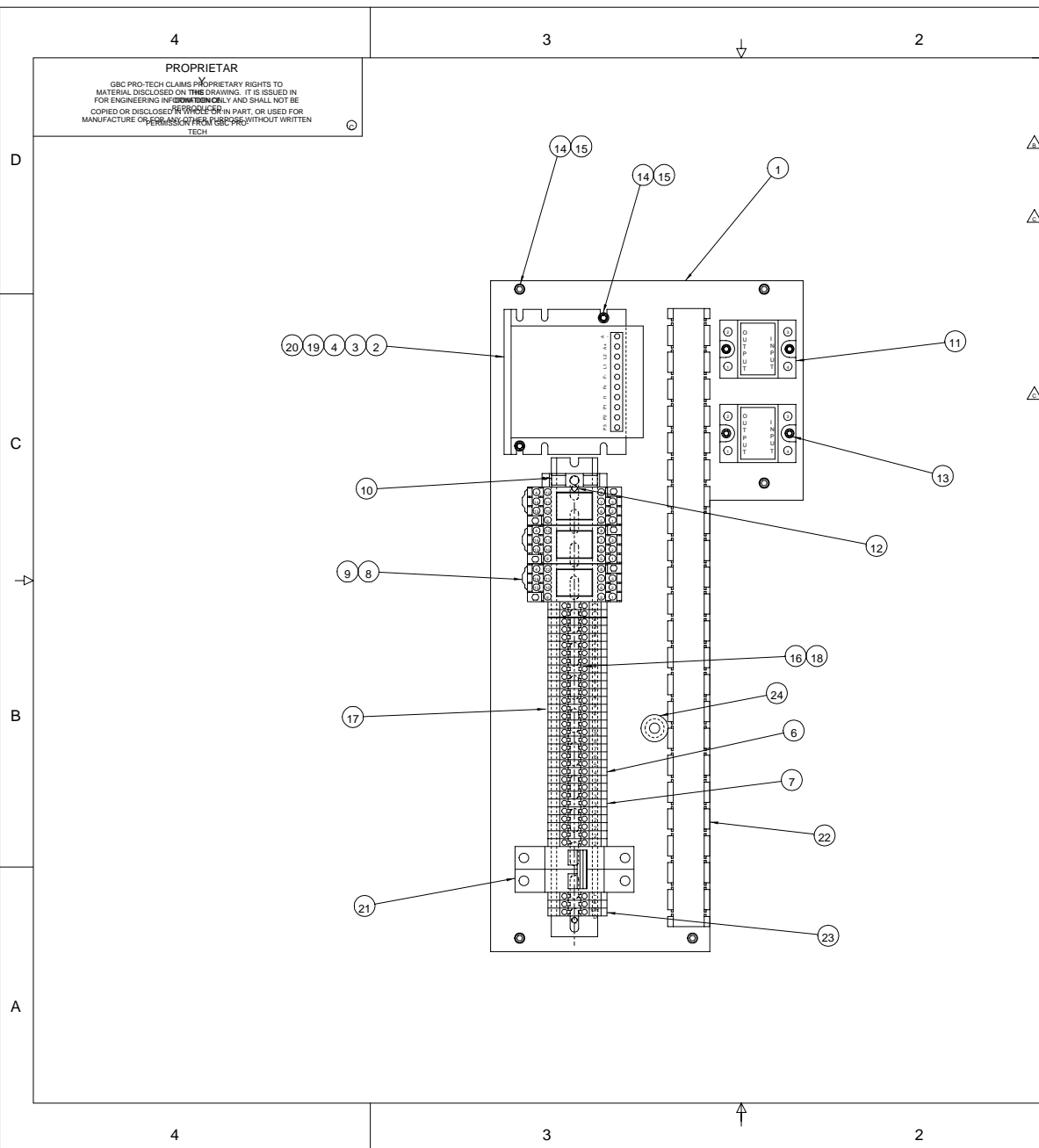


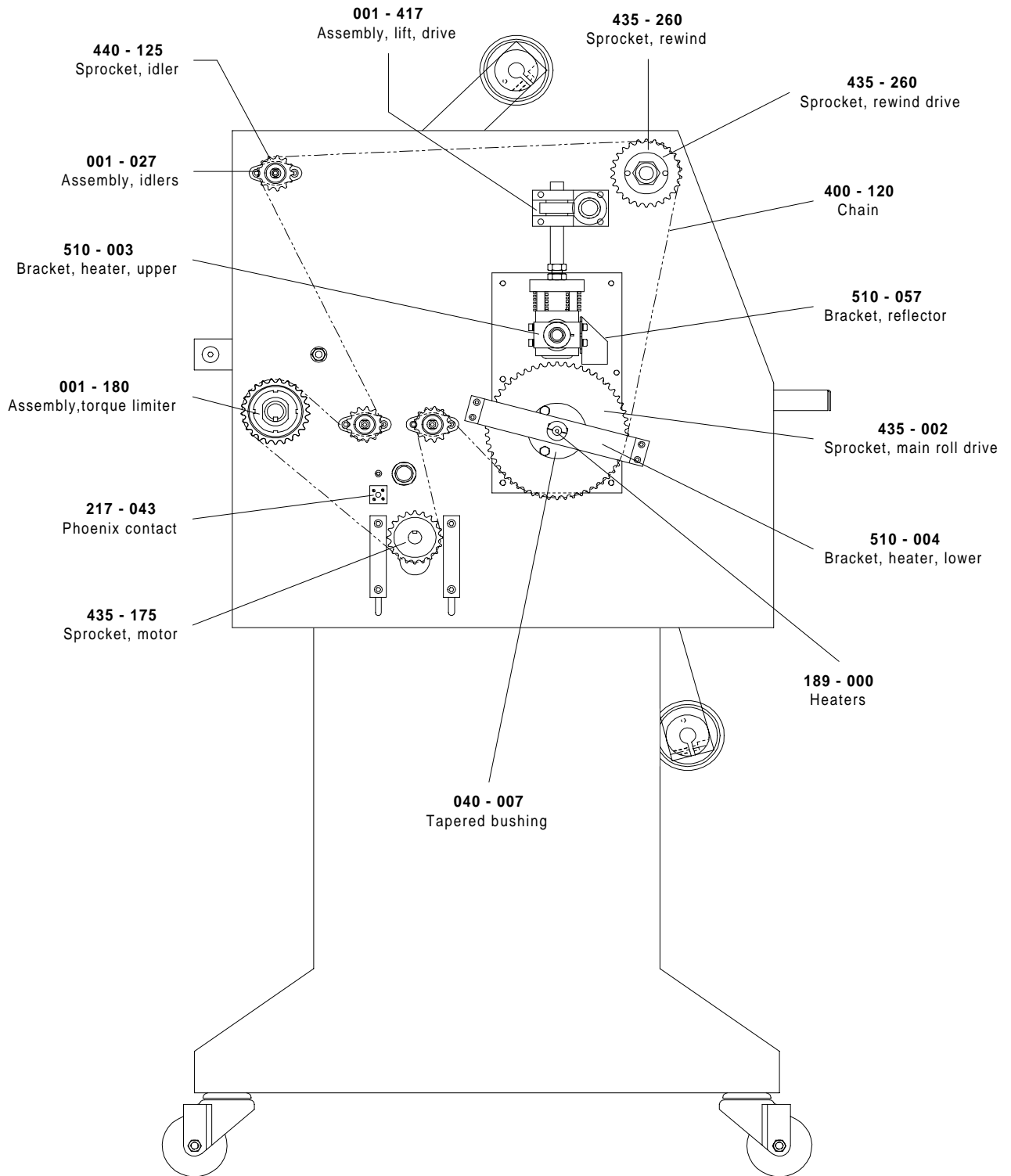
Rear Control Panel



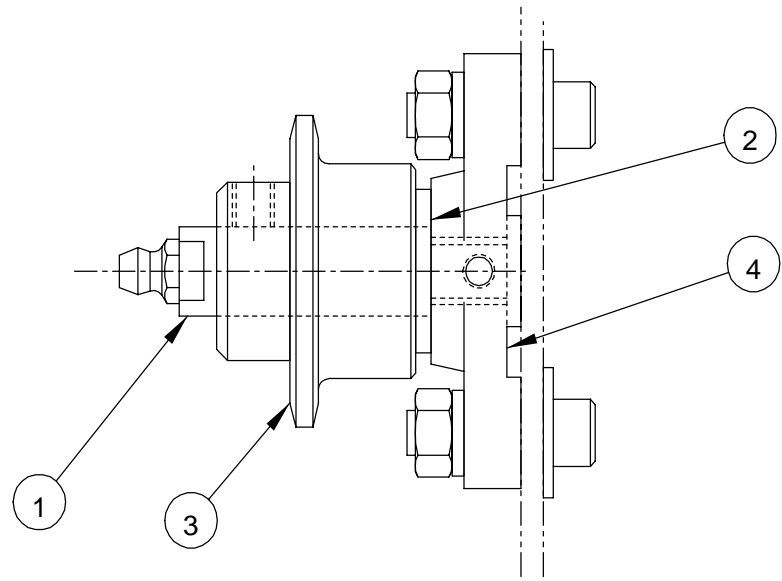
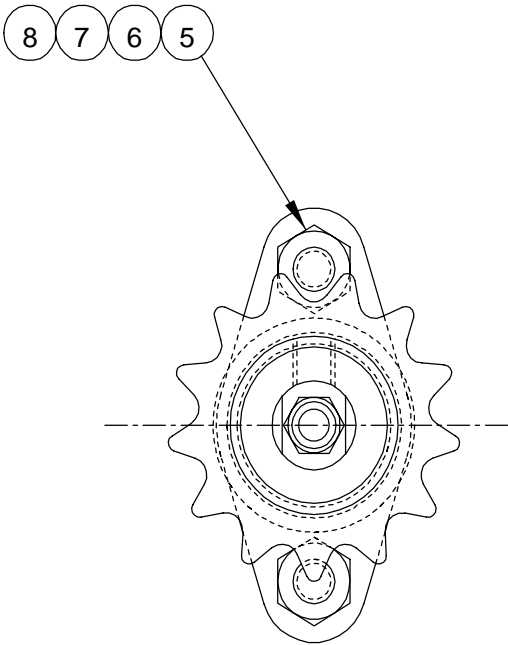
REQ'D	DESCRIPTION	PART NO.	ITEM
1	PNL.ELEC	670-000	1
1	CNTRL_MTR /KBLC-240DS	220-160	2
1	BRD.BARR /KBIC-9884	220-110	3
1	REST.1/8 /KBIC-9890	220-130	4
1	TB.END /SS-221-01	217-170	5
26	TB.40A.GRAY /VU4-4	217-120	6
7	TB.40A.BLUE /VU4-4	217-270	7
3	BASE.RLY.14PIN /PY14A-E	207-110	8
3	RLY.14 PIN /MY4N/240	207-125	9
1	DIN RAIL, 14"	217-205	10
2	RLY.SST.40A.240V /A2440	207-150	11
2	BHCS,10-32 X .38	-	12
4	SHCS,8-32 X .38	-	13
4	SHCS,10-32 X .5	-	14
4	WASHLOCK,10	-	15
6	BAR_JMP /SS-205-01	217-190	16
NUMBERS			
6	CVR.BAR_JMP,V4/V5	217-180	18
1	FUSE,2.5 /	-	19
1	FUSE	-	20
1	CB,PWR /S272K32	186-510	21
1	DUCT WITH COVER, 18"	180-155	22
1	TB.40A.GRN /VUPE 4-4	217-140	23
1	GROMMET,RUBBER, .31	175-000	24

SHEET 1 OF 1		UNLESS OTHERWISE SPECIFIED		 4131 Brindley Road, Dear Park, Missouri Phone (800) 248-8883 / Fax (800) 248-8884	
DIM (IN) P-1 DIM (MM) P-2 DIM (IN) P-3 DIM (MM) P-4 DIM (IN) P-5 DIM (MM) P-6 DIM (IN) P-7 DIM (MM) P-8	TOL	FINISH BE 1/2 1/4 1/8 1/16 1/32 1/64 1/128 1/256 1/512 1/1024	DATE DESIGNED BY DRAWN BY CHECKED BY APPROVED BY	ANGLE B TD	TITLE ASSY, PANEL, ELEC SCALE 1:2 SHEET C Dwg 001-039

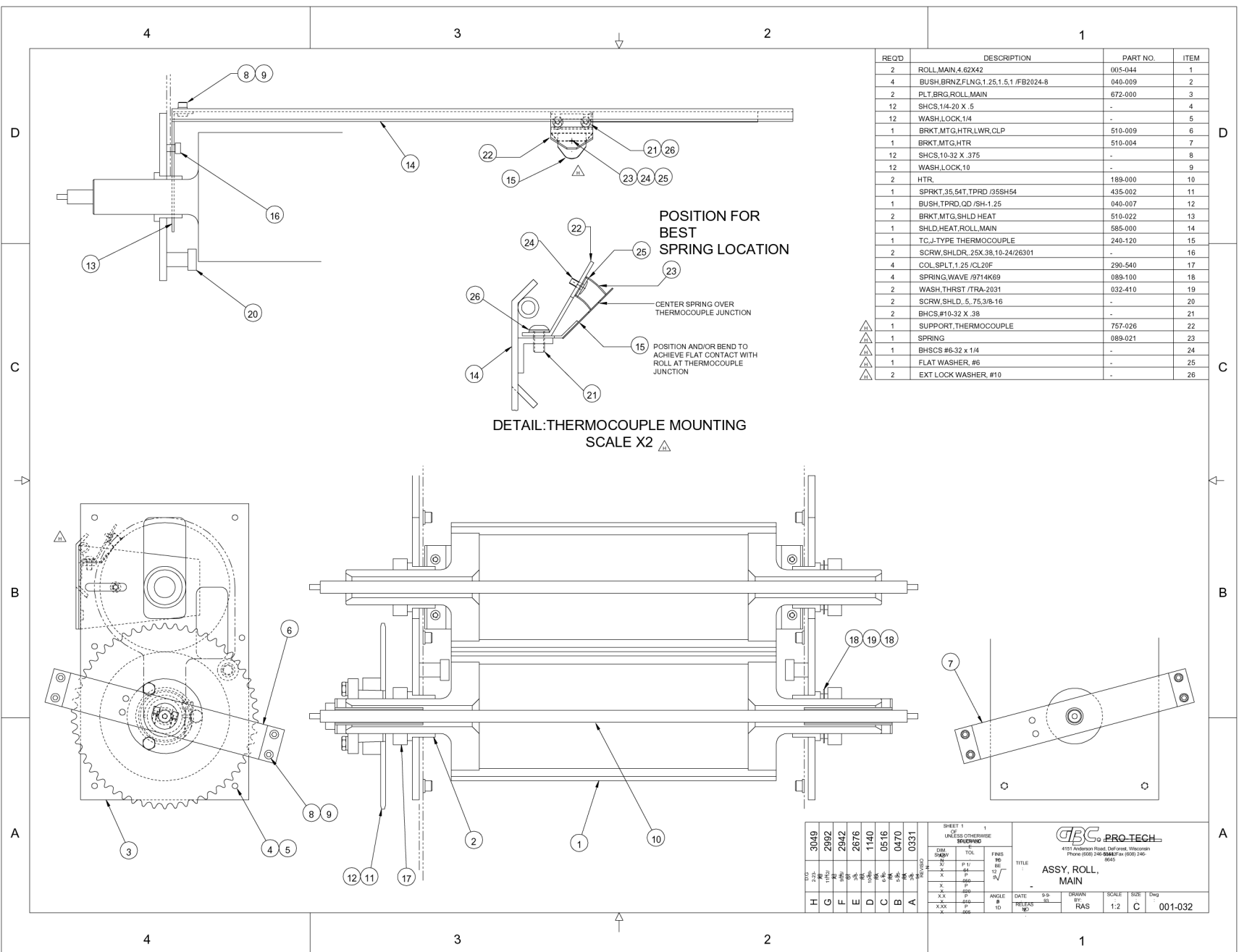




REQ'D	DESCRIPTION	PART NO.	ITEM
1	SHFT,IDL,.5 /S01	440-110	1
1	WASH,THRST,.5,.06 /TRB-815	032-140	2
1	SPRKT,35,13T,.5 /35BS13F	440-125	3
1	BASE,IDL,3/8-16 /GS	440-135	4
2	SHCS,1/4-20 X .875	-	5
2	WASH,FLAT,1/4	-	6
2	WASH,LOCK,1/4	-	7
2	NUT,HEX,1/4-20	-	8



This print is the property of PRO-TECH ENGR. The information thereon is remitted in confidence.									
UNLESS OTHERWISE SPECIFIED TOLERANCE				Pro-Tech Engineering 2117 N. Stoughton Rd. Madison, Wisconsin 53704 Phone (608) 246-8844 Fax (608) 246-8645					
DIM. AS SHOWN		TOL		FINISH TO BE		TITLE			
X/	P 1/	.04		125√		ASSY, SPRKT, IDL, 13T, BASE			
X	P	.050				PTN-36			
X	P					DATE: 8-6-93			
X	.020			ANGLES P 1D		DRAWN BY: RAS		DWG SCALE: A1	
X.X	P							Dwg: 001-027	
X	.010								
X,XX	P								
X	.005								
REVISION		0794							
A		10/30/94							

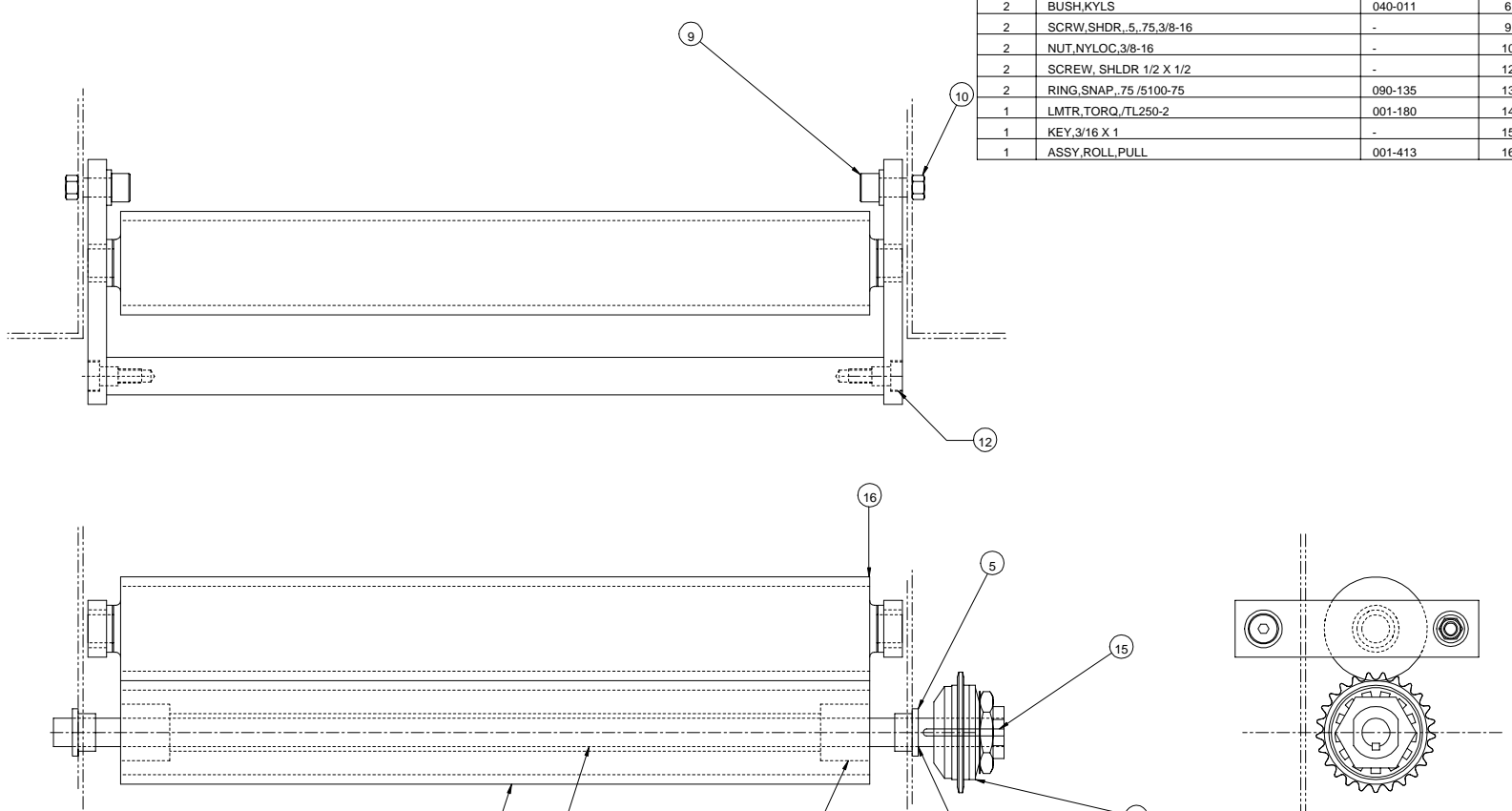


RECD	DESCRIPTION	PART NO.	ITEM
2	ROLL MAIN 4.62X42	005-044	1
4	BUSH, BRNZ, FLNG, 1.25, 1.5, 1.5, 1 / FB2024-8	040-009	2
2	PLT BRG, ROLL MAIN	672-000	3
12	SHCS, 1/4-20 X .5	-	4
12	WASH, LOCK, 1/4	-	5
1	BRKT, MTG, HTR, LWR, CLP	510-009	6
1	BRKT, MTG, HTR	510-004	7
12	SHCS, 10-32 X .375	-	8
12	WASH, LOCK, 10	-	9
2	HTR	189-000	10
1	SPRKT, .35, 54T, TPRD, /3SSH54	435-002	11
1	BUSH, TPRD, QD /SH-1.25	040-007	12
2	BRKT, MTG, SHLD, HEAT	510-022	13
1	SHLD, HEAT, ROLL MAIN	585-000	14
1	T.C.J-TYPE THERMOCOUPLE	240-120	15
2	SCRW, SHLDR, 25X.38, 10-24/26301	-	16
4	COL, SPLT, 1.25 /CL20F	290-540	17
4	SPRING, WAVE /9714K69	089-100	18
2	WASH, THRST, /TRA-2031	032-410	19
2	SCRW, SHLD, .5, 75, 3/8-16	-	20
2	BHCS, #10-32 X .38	-	21
1	SUPPORT, THERMOCOUPLE	757-026	22
1	SPRING	089-021	23
1	BHSCS #6-32 x 1/4	-	24
1	FLAT WASHER, #6	-	25
2	EXT LOCK WASHER, #10	-	26

SHEET 1 1		UNLESS OTHERWISE SPECIFIED		GBC PRO-TECH	
DATE	TOL	FRS	FB	4191 Anderson Road, Delwood, Wisconsin Phone (608) 796-8442 or (608) 746-8645	
DM		BY	BY	TITLE	
DRY		BY	BY	ASSY, ROLL, MAIN	
X	P 11	BY	BY	SCALE: 1:2 C	
X	16	DATE	DATE	SIZE: C	
X	16	DATE	DATE	Dwg: 001-032	
X	16	DATE	DATE	DRAWN BY: RAS	
X	16	DATE	DATE	CHECKED BY: RAS	
X	16	DATE	DATE	APPROVED BY: RAS	

REQ'D	DESCRIPTION	PART NO.	ITEM
1	ROLL,PULL,LWR,2.5X42	690-003	2
1	SHFT,ROLL,PULL,LWR,.75,47.38	710-003	4
2	BUSH,BRNZ,FLNG,.75,1.62 /FB1216-5	040-008	5
2	BUSH,KYLS	040-011	6
2	SCRW,SHDR,.5,.75,3/8-16	-	9
2	NUT,NYLOC,3/8-16	-	10
2	SCREW,SHLDR 1/2 X 1/2	-	12
2	RING,SNAP,.75 /S100-75	090-135	13
1	LMTR,TORQ,TL250-2	001-180	14
1	KEY,3/16 X 1	-	15
1	ASSY,ROLL,PULL	001-413	16

PROPRIETARY
 GBC PRO-TECH CLAIMS PROPRIETARY RIGHTS TO THE MATERIAL DISCLOSED ON THIS DRAWING. IT IS ISSUED IN CONFIDENCE FOR ENGINEERING INFORMATION ONLY AND SHALL NOT BE REPRODUCED, COPIED OR DISCLOSED IN WHOLE OR IN PART, OR USED FOR MANUFACTURE OR FOR ANY OTHER PURPOSE WITHOUT WRITTEN PERMISSION FROM GBC PRO-TECH



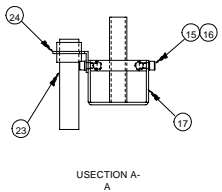
3128	3034	2590
D	C	C
E	D	C

DATE	BY	SCALE	SHEET	DWG
10/10/99	RAS	1/1	C	001-033

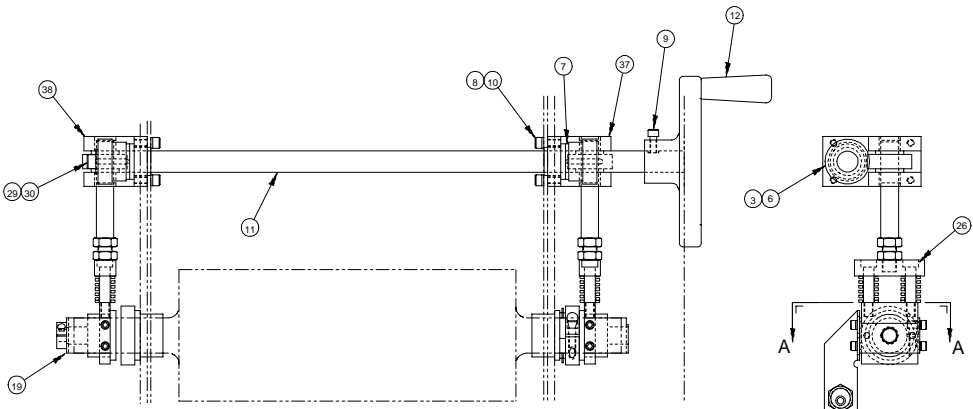
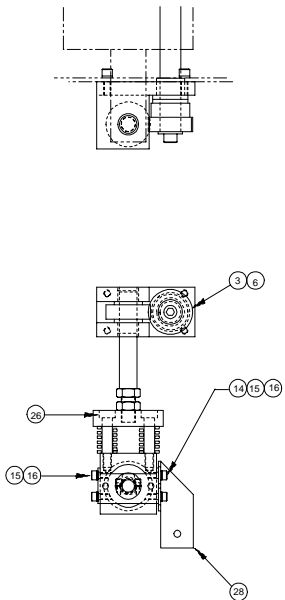
GBC PRO-TECH
 4124 Trillick Road, DeForest, Wisconsin
 Phone (800) 246-8862 Fax (608) 246-8864

TITLE: ASSY,ROLL,PUL L

RECD	DESCRIPTION	PART NO.	ITEM
			1
			2
	GEAR HELL RH 10DP 24T 1.50 75 / 78H24R	430-008	3
			4
			5
	KEY, 3/16 X 1	-	6
	WASH THRT, 7/16, 12 / 78X220	032-002	7
	SHCS 1/4-20 X .75	-	8
	SHCS 1/4-20 X .625	-	9
	WASH LOCK, 14	-	19
	SKFT CRNK LIFT ROLL MAIN	710-000	11
	PROVWL 6 8240206	485-005	12
			13
	WASHER, FLAT #10	-	14
	SHCS 10-32 X .38	-	15
	WASH LOCK, 10	-	16
	BRKT MTO LTR	510-002	17
			18
	BRKT MTO LTR, W CLAMP	510-003	19
			20
			21
			22
	SW PHEYE /3SF-R221	250-100	23
	BRKT PHEYE/FALCON	510-029	24
			25
	SCRW SHLD, 3/16 X 25.5/16-18	-	26
			27
	BRACKET REFLECTOR PHEYE	510-057	28
	SHCS 5/16 X .5	-	29
	WASHER PLAT 5/16	-	30
			31
			32
			33
			34
			35
			36
			37
	ASSY LIFTR, ROLL MAIN	001-411	38
	ASSY LIFTR, ROLL MAIN	001-417	39



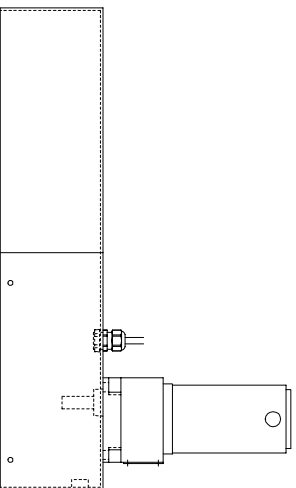
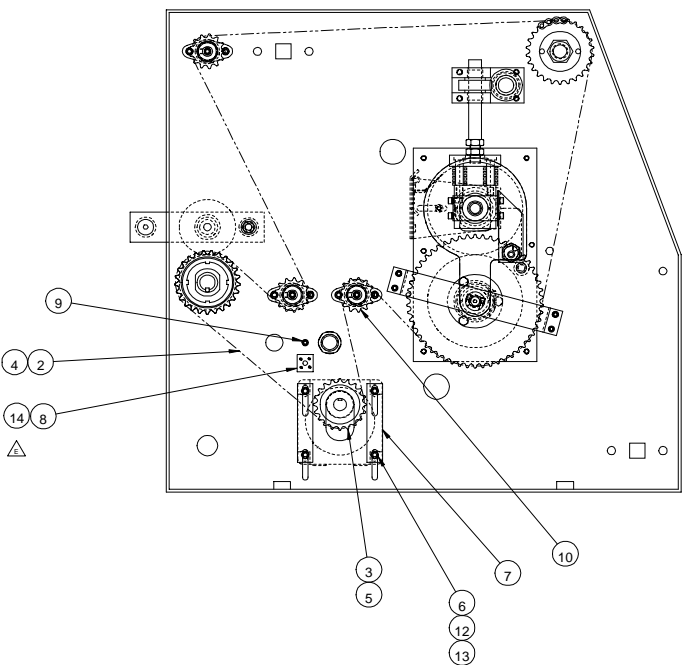
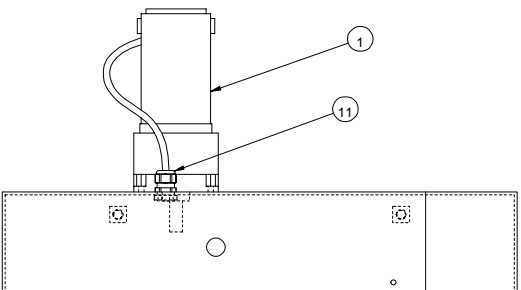
PROPRIETAR
 GBC PRO-TECH CLAIMS PRIMARY RIGHTS TO
 MATERIAL DISCLOSED ON THIS DRAWING. IT IS RELEASED
 FOR ENGINEERING INFORMATION ONLY AND SHALL NOT BE
 COPIED OR REPRODUCED IN ANY MANNER, OR USED
 MANUFACTURE OR FOR ANY OTHER PURPOSE WITHOUT
 PERMISSION FROM GBC PRO-TECH.



REV	DATE	BY	CHKD	APP'D
1	26/76			
2	25/90			

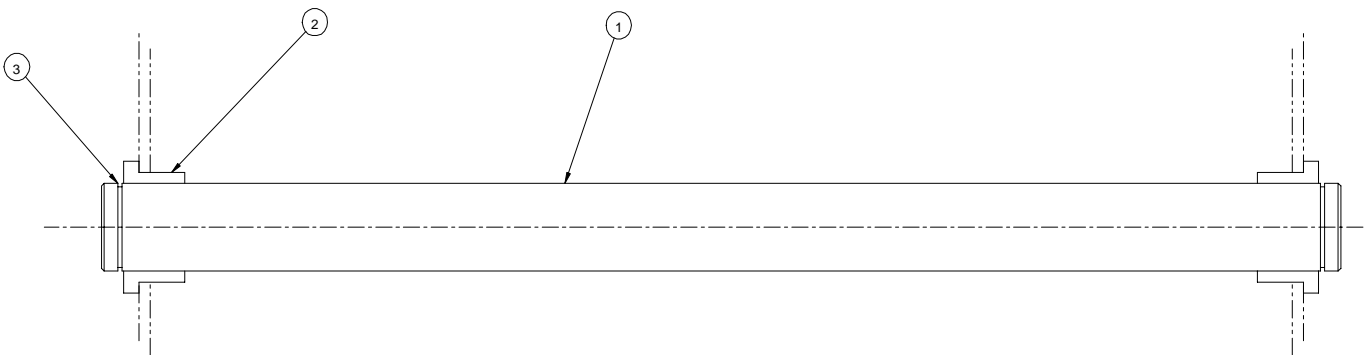
GBC PRO-TECH		TITLE	
ASSY LIFTR, ROLL MAI		N	
SCALE	DATE	BRN	DR
1:1	1.2	D	001-034

REQ'D	DESCRIPTION	PART NO.	ITEM
1	MOTOR, 1/8 HP	425-000	1
1	CHAIN, 35	400-150	2
1	SPROCKET, 35, 20T, 5/8 BORE	435-175	3
1	CHAIN, LINK, MASTER	400-140	4
1	SCREW, SET, 1/4-20 X .375	-	5
4	WASHER, LOCK, STAR, 1/4	-	6
2	WASHER, BAR, 1/4	645-002	7
1	TERMINAL, BLOCK	217-043	8
1	NUT, NYLOCK, 10-32	-	9
3	ASSY, SPROCKET, IDLER	001-027	10
1	RELIEF, STRAIN, SMALL	175-180	11
4	SHCS, 1/4-20 X 1	-	12
4	NUT, HEX, 1/4-20	-	13
1	SHCS #4-40 X 3/4	-	14



REV		DATE		BY		CHKD		APP'D	
E									
D	3128								
C	3110								
B	2526								
A	0320								
<small>UNLESS OTHERWISE SPECIFIED</small> This part is the property of PRO-TECH ENGINE. The information herein is limited to the information shown. Pro-Tech Engineering <small>Phone (202) 2458988 Fax (202) 2458989</small> TITLE ASSY, DRIVE, STANDAR FALCON- D 36 DATE 2-16-94 DRAWN RAS DIVG SCALE C4 DWG 001-035									

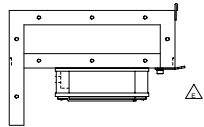
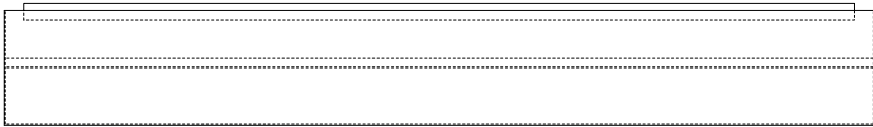
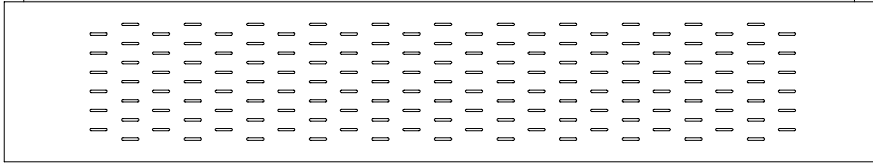
REQ'D	DESCRIPTION	PART NO.	ITEM
1	IDL,TEN	620-000	1
2	BUSH,BRNZ,FLNG,1,1.25,.75 /FB1620-6	040-016	2
2	RING,SNAP,1 /5100-100	090-140	3



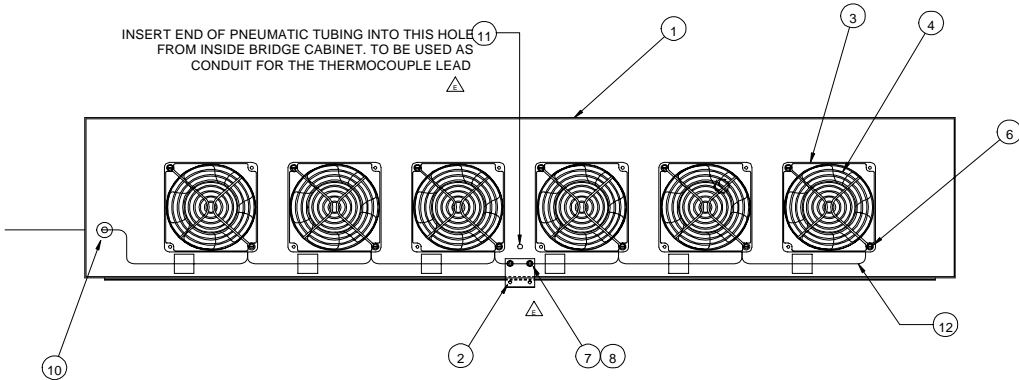
UNLESS OTHERWISE SPECIFIED		TOLERANCE		FINISH TO BE		TITLE	
DIM. AS SHOWN	F 184	TOL.	F 184	TO BE	1/2	ASSY.IDL,TEN,BRK	
XX	F 250					F-36	
X	F 250					DATE: 9-11-93	
XX	F 250	ANGLE	B	DATE	9-11-93	DRAWN BY:	RAS
XXX	F 250			DWG SCALE:	C1		001-036

REQD	DESCRIPTION	PART NO.	ITEM
1	CAB,BRDG,FALCON	520-004	1
1	BRKT,MTG,TC	510-018	2
6	FAN,MUFFIN	182-101	3
6	GUARD,FAN	182-011	4
12	SCRW,PAN,6-32 X 2	-	6
20	SHCS,10-32 X .5	-	7
20	WASH,LOCK,10	-	8
1	GROMMET	175-000	10
5 FT	TUBING,PNEUMATIC,1/4	360-120	11
1	WIRE HARNESS,DAISY CHAIN	201-000	12

PROPRIETARY
 GBC PRO-TECH CLAIMS PROPRIETARY RIGHTS TO THE MATERIAL DISCLOSED ON THIS DRAWING. IT IS ISSUED IN CONFIDENCE FOR ENGINEERING INFORMATION ONLY AND SHALL NOT BE REPRODUCED, COPIED OR DISCLOSED IN WHOLE OR IN PART, OR USED FOR MANUFACTURE OR FOR ANY OTHER PURPOSE WITHOUT WRITTEN PERMISSION FROM GBC PRO-TECH



INSERT END OF PNEUMATIC TUBING INTO THIS HOLE FROM INSIDE BRIDGE CABINET. TO BE USED AS CONDUIT FOR THE THERMOCOUPLE LEAD



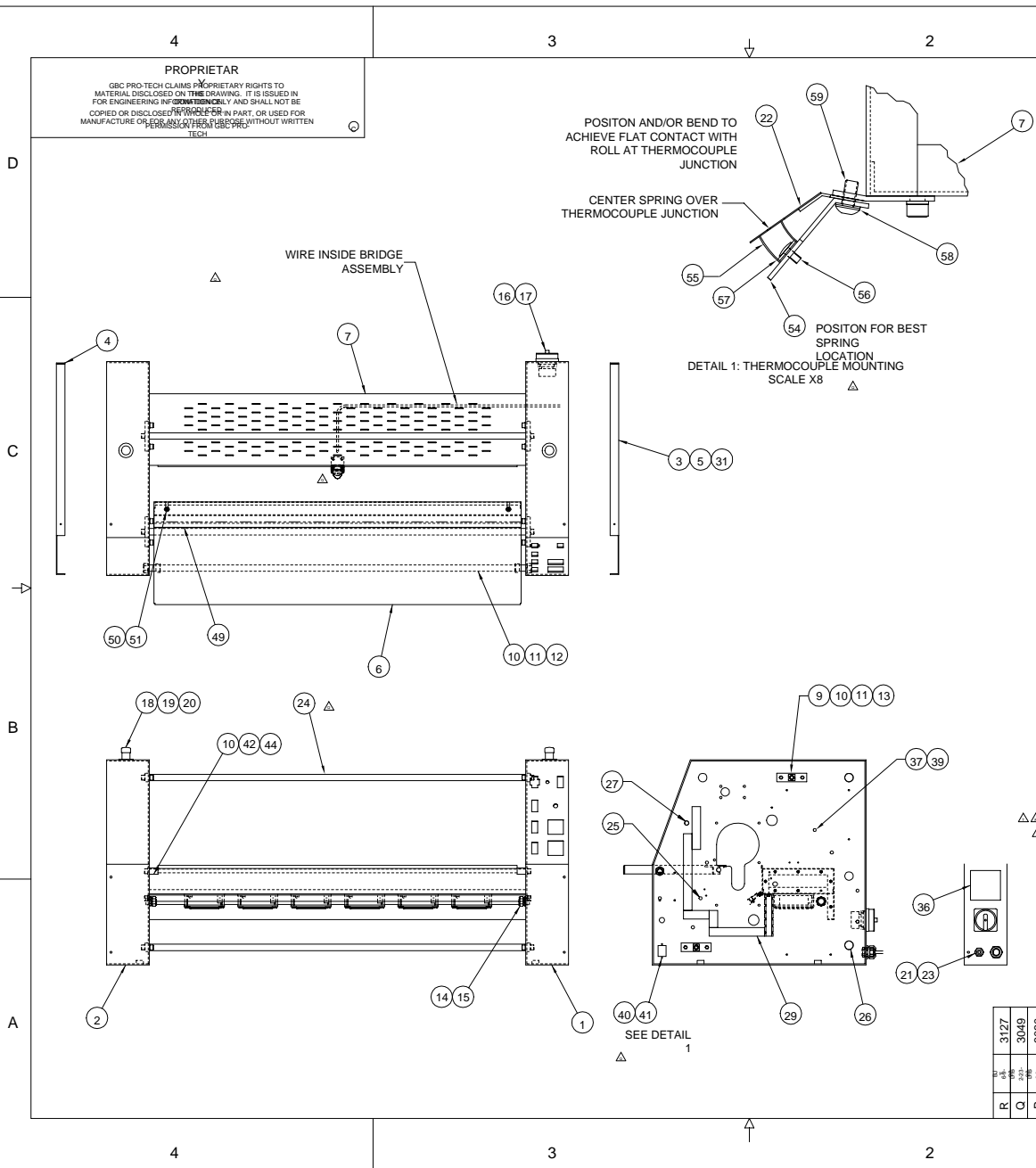
REV	DATE	BY	CHKD	APP'D	DESCRIPTION
E	30/49	10/17	0689	0411	0300
D					
C					
B					
A					

DATE	3-XX	REVISION	P.001
RELEASE	X-XXX	NO.	P.005

SHEET 1 OF #REF!		UNLESS OTHERWISE SPECIFIED TOLERANCES	
FINISH TO BE	TOL.	FINISH TO BE	TOL.
X	P.184	X	P.050
X	P.050	X	P.050
X	P.050	X	P.050
X	P.050	X	P.050
X	P.050	X	P.050

GBC PRO-TECH			
415 Ardmore Road, DuPont, Wyoming 82032			
Phone (307) 248-9844 Fax (307) 248-9845			
TITLE	#REF!	#REF!	#REF!
DATE	3-XX	REVISION	P.001
RELEASE	X-XXX	NO.	P.005
DRAWN BY	#REF!	SCALE	#REF!
SIZE	#REF!	DRG	#REF!

REV'D	DESCRIPTION	PART NO.	ITEM
1	CABINET, RIGHT	520-001	1
1	CABINET, LEFT	520-000	2
1	CABINET COVER, RIGHT	520-003	3
1	CABINET COVER, LEFT	520-002	4
10	BHCS, #10-32 X .5	-	5
1	TABLE, INFEED	760-001	6
1	ASSEMBLY, BRIDGE	001-040	7
1	ASSEMBLY, SAFETY LABEL	001-260	8
4	BRACKET, MOUNTING, TIEBAR	510-023	9
12	SHCS, 3/8-16 X .75	-	10
14	WASHER, LOCK, 3/8	-	11
1	SHAFT, IDLER, ENVELOPE	710-006	12
4	SHCS, 3/8-16 X 1.0	-	13
2	CONNECTOR, COMPRESSION, 1/2	175-100	14
1	CONDUIT, 1/2	540-000	15
1	SWITCH, POWER, ON/OFF	214-420	16
1	KNOB, SWITCH, POWER, ON/OFF	214-400	17
2	CONTACT BLOCK, E-STOP	214-314	18
2	SWITCH, PALM, EMERGENCY STOP	214-313	19
2	DECAL, SWITCH, EMERGENCY STOP	450-110	20
1	SWITCH, FOOT	214-263	21
1	THERMOCOUPLE, OKJ30B13A	240-120	22
1	STRAIN RELIEF, 1/2	175-180	23
2	TIE BAR, UNWIND	770-000	24
4	PLUG, HOLE, DOME, BLACK, 3/8	175-501	25
3	PLUG, HOLE, DOME, 1	175-510	26
1	LIGHT, INDICATOR, RED	194-001	27
-	-	-	28
1	ASSEMBLY, CHASSIS WIRE DUCT SET	001-232	29
-	-	-	30
1.69	GROMMET, RUBBER STRIP	175-002	31
-	-	-	32
-	-	-	33
-	-	-	34
-	-	-	35
1	SERIAL PLATE, GENERIC	450-015	36
2	SHSC, 1/4-20 X .75	-	37
-	-	-	38
2	BUMPER, RUBBER, RECESSED	465-502	39
1	ASSEMBLY, PLUG, POWER, VAC TABLE	001-172	40
2	RIVET, 1/8	-	41
2	SUPPORT, TABLE, INFEED, FALCON-36	757-008	42
-	-	-	43
2	WASHER, LOCK, 3/8	-	44
2	PLUG, HOLE, DOME, BLACK, 5/8	175-503	45
-	-	-	46
-	-	-	47
-	-	-	48
1	PLATE, PRESSURE, INFEED	672-012	49
2	STRIP, 1/2" X 25 X 1/4 (26300)	-	50
-	-	-	51
-	-	-	52
-	-	-	53
1	SUPPORT, THERMOCOUPLE	757-026	54
1	SPRING	089-021	55
1	BHCS #6-32 x 1/4	-	56
1	FLAT WASHER, #6	-	57
2	EXT LOCK WASHER, #10	-	58
2	BHCS 10-32 x 3/8	-	59

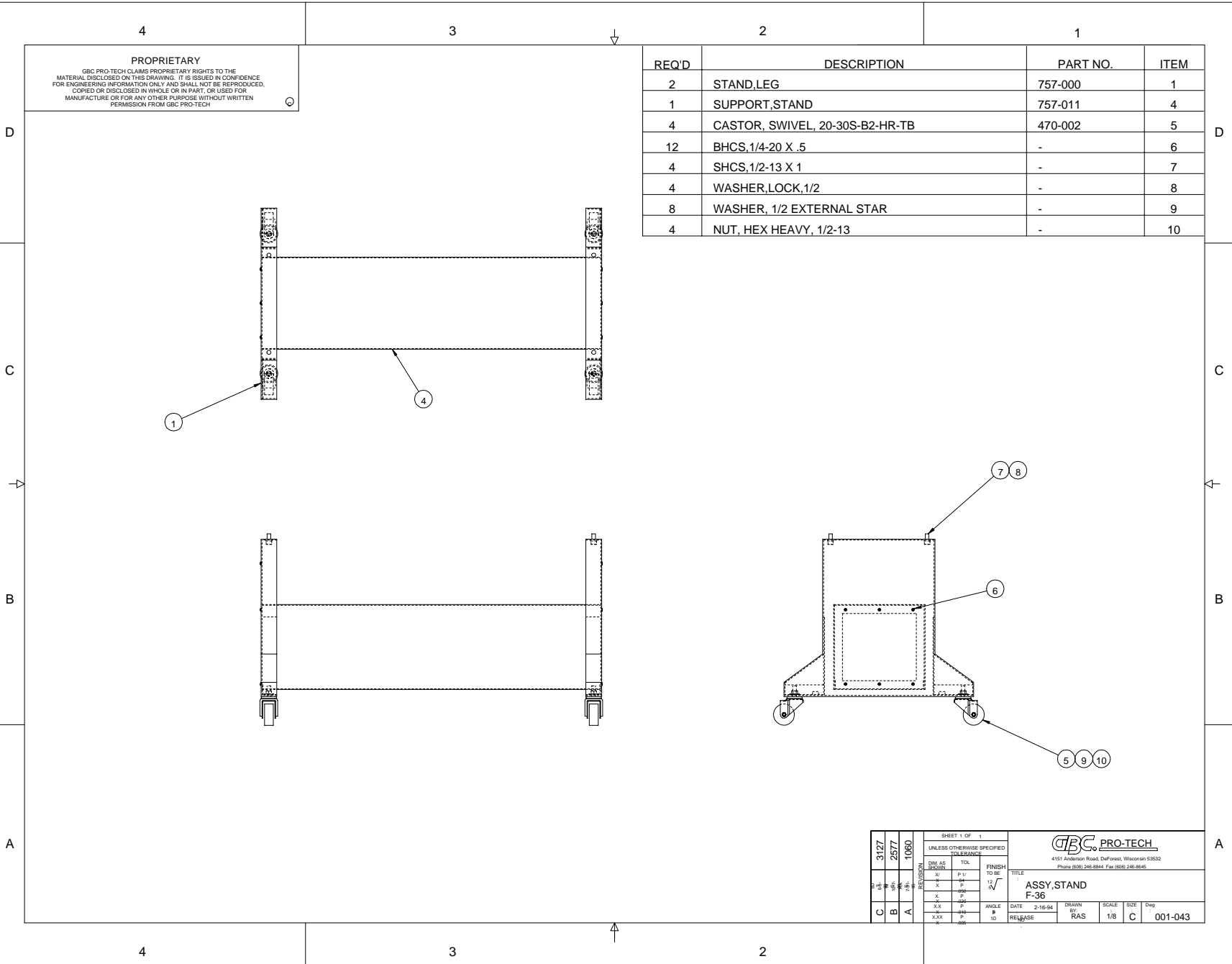


REV	DATE	BY	CHKD	APP'D	DESCRIPTION
R	03/27	CO	OP	PL	3049
O	03/28	CO	OP	PL	3050
P	04/01	CO	OP	PL	2952
N	04/01	CO	OP	PL	2942
M	04/01	CO	OP	PL	2676
L	04/01	CO	OP	PL	2608

SHEET 1	UNLESS OTHERWISE SPECIFIED	TOL	FINIS
20	±.015	P 1/2	1/2
10	±.005	1/4	1/4
3	±.002	1/16	1/16
1	±.001	1/32	1/32
1	±.0005	1/64	1/64
1	±.0002	1/128	1/128
1	±.0001	1/256	1/256
1	±.00005	1/512	1/512
1	±.00002	1/1024	1/1024
1	±.00001	1/2048	1/2048

TITLE	ASSEMBLY, CABINET
T	T
DATE	4-15-99
SCALE	RAS
SIZE	1:8 C
Dwg	001-042

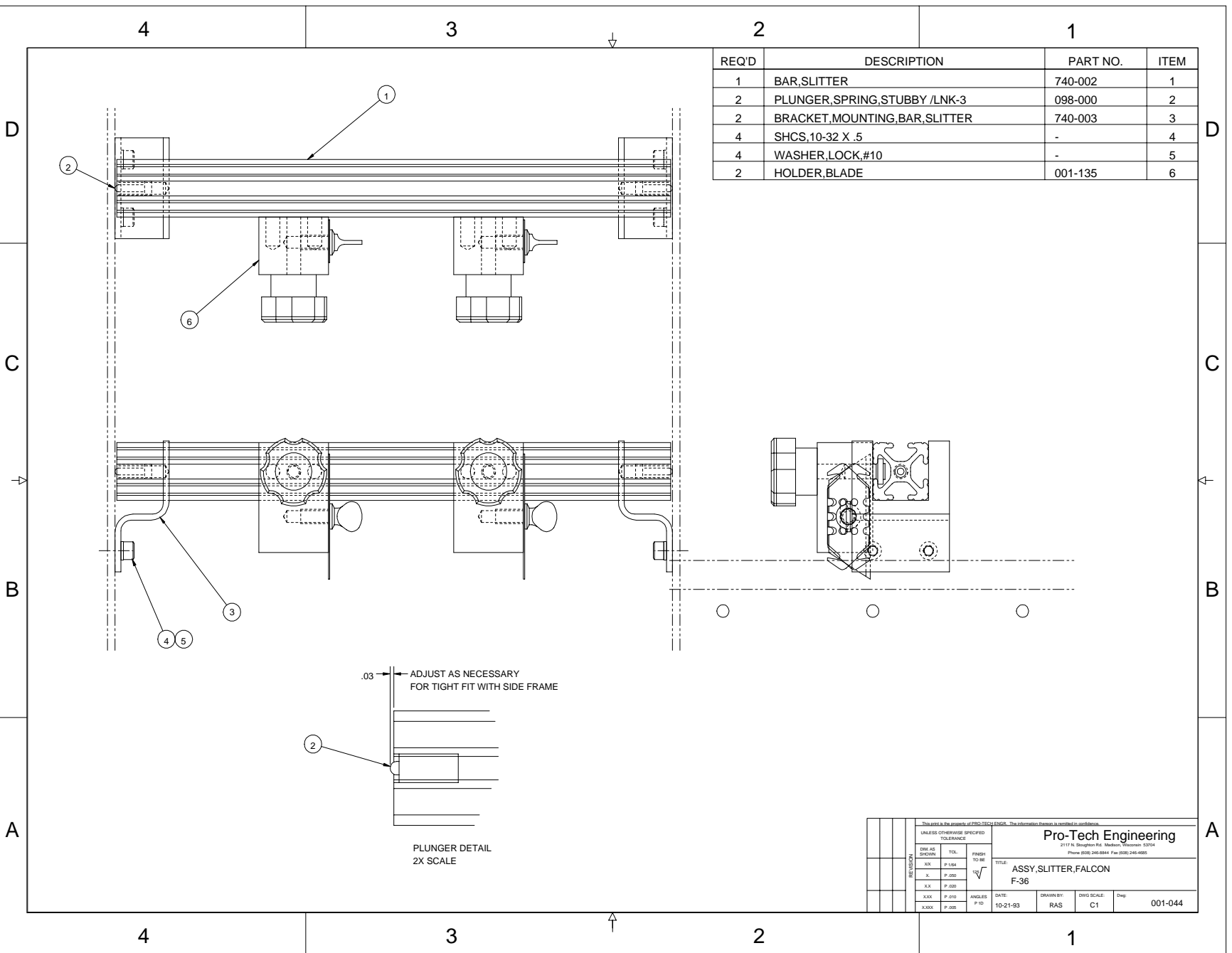
REQ'D	DESCRIPTION	PART NO.	ITEM
2	STAND,LEG	757-000	1
1	SUPPORT,STAND	757-011	4
4	CASTOR, SWIVEL, 20-30S-B2-HR-TB	470-002	5
12	BHCS,1/4-20 X .5	-	6
4	SHCS,1/2-13 X 1	-	7
4	WASHER,LOCK,1/2	-	8
8	WASHER, 1/2 EXTERNAL STAR	-	9
4	NUT, HEX HEAVY, 1/2-13	-	10



PROPRIETARY
 GBC PRO-TECH CLAIMS PROPRIETARY RIGHTS TO THE MATERIAL DISCLOSED ON THIS DRAWING. IT IS ISSUED IN CONFIDENCE FOR ENGINEERING INFORMATION ONLY AND SHALL NOT BE REPRODUCED, COPIED OR DISCLOSED IN WHOLE OR IN PART, OR USED FOR MANUFACTURE OR FOR ANY OTHER PURPOSE WITHOUT WRITTEN PERMISSION FROM GBC PRO-TECH.

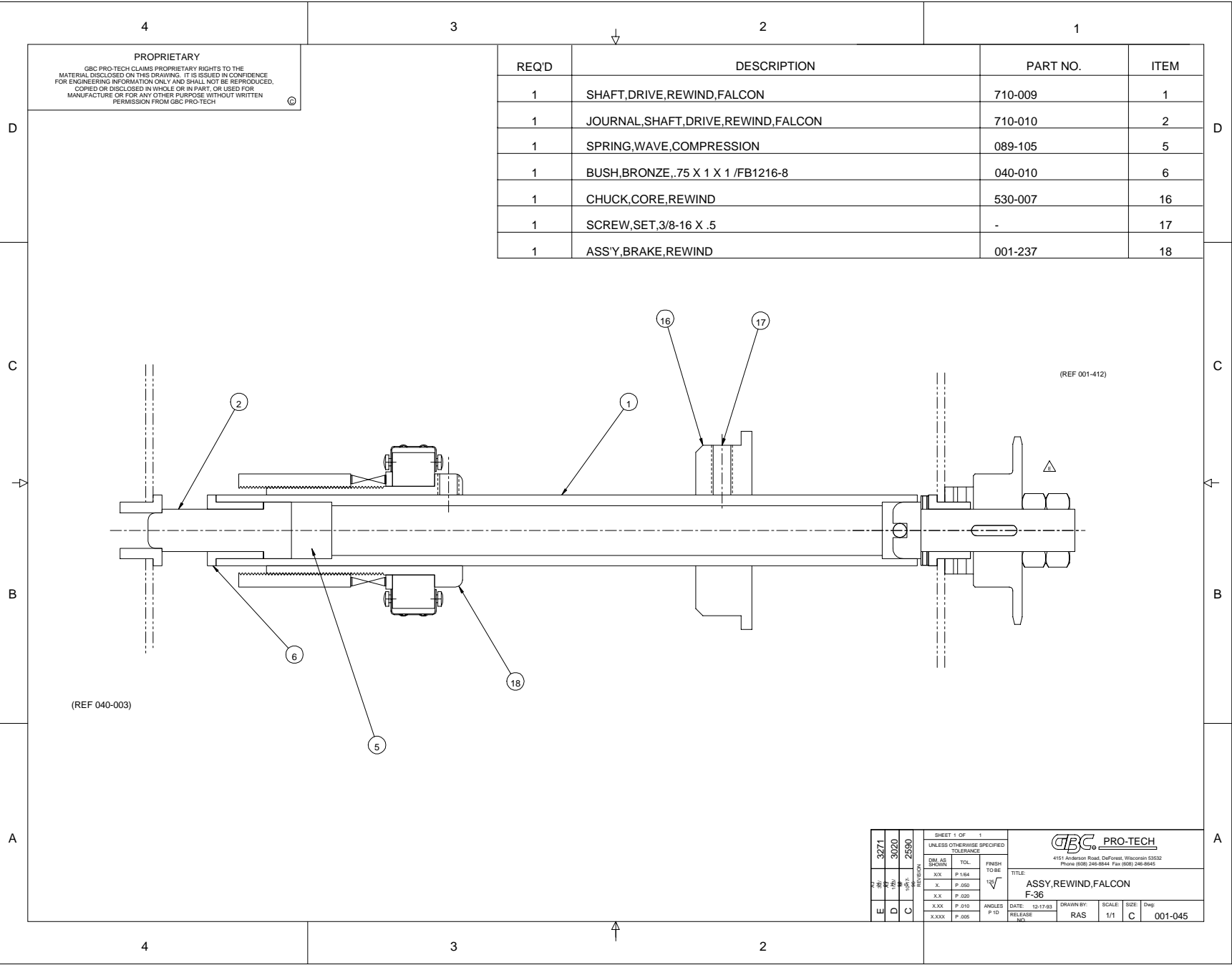
3127		2577		1060		SHEET 1 OF 1		UNLESS OTHERWISE SPECIFIED		TOL.		FINISH		TITLE			
AS	BY	CHK	APP	DATE	SCALE	SIZE	DRG	DATE	BY	SCALE	SIZE	DRG	DATE	BY	SCALE	SIZE	DRG
C	B	A						2-16-94	RAS	1/8	C						001-043
GBC PRO-TECH 4151 Anderson Road, Dalwholley, Wetherah 5352 Phone (08) 246-8844 Fax (08) 246-8845								ASSY,STAND F-36									

REQ'D	DESCRIPTION	PART NO.	ITEM
1	BAR,SLITTER	740-002	1
2	PLUNGER,SPRING,STUBBY /LNK-3	098-000	2
2	BRACKET,MOUNTING,BAR,SLITTER	740-003	3
4	SHCS,10-32 X .5	-	4
4	WASHER,LOCK,#10	-	5
2	HOLDER,BLADE	001-135	6



This plan is the property of FSC, TECH ENGR. The information herein is confidential and/or unclassified.

UNLESS OTHERWISE SPECIFIED TOLERANCE		Pro-Tech Engineering	
2117 N. Slaughter Rd. Madison, Wisconsin 53704		Phone (608) 248-8844 Fax (608) 248-4955	
TITLE: ASSY,SLITTER,FALCON		F-36	
DATE: 10-21-93	DRAWN BY: RAS	DWG SCALE: C1	Dep: 001-044



REQ'D	DESCRIPTION	PART NO.	ITEM
1	SHAFT,DRIVE,REWIND,FALCON	710-009	1
1	JOURNAL,SHAFT,DRIVE,REWIND,FALCON	710-010	2
1	SPRING,WAVE,COMPRESSION	089-105	5
1	BUSH,BRONZE,.75 X 1 X 1 /FB1216-8	040-010	6
1	CHUCK,CORE,REWIND	530-007	16
1	SCREW,SET,3/8-16 X .5	-	17
1	ASSY,BRAKE,REWIND	001-237	18

PROPRIETARY
 GBC PRO-TECH CLAIMS PROPRIETARY RIGHTS TO THE MATERIAL DISCLOSED ON THIS DRAWING. IT IS ISSUED IN CONFIDENCE FOR ENGINEERING INFORMATION ONLY AND SHALL NOT BE REPRODUCED, COPIED OR DISCLOSED IN WHOLE OR IN PART, OR USED FOR MANUFACTURE OR FOR ANY OTHER PURPOSE WITHOUT WRITTEN PERMISSION FROM GBC PRO-TECH

SHEET 1 OF 1		UNLESS OTHERWISE SPECIFIED TOLERANCE		GBC PRO-TECH	
DIM. AS SHOWN		TOL.	FINISH TO BE	4151 Anderson Road, Duffin, Woodburn 03022 Phone (608) 246-8844 Fax (608) 246-8645	
XXX	P 1/64		✓	TITLE: ASSY,REWIND,FALCON	
X	P .050			F-36	
XX	P .020			DRAWN BY: RAS	
XX	P .010	ANGLES P 10	DATE: 12-17-93	SCALE: 1/1	SIZE: C
XXX	P .005	RELEASE NO.		Dwg: 001-045	

4 3 2 1

D

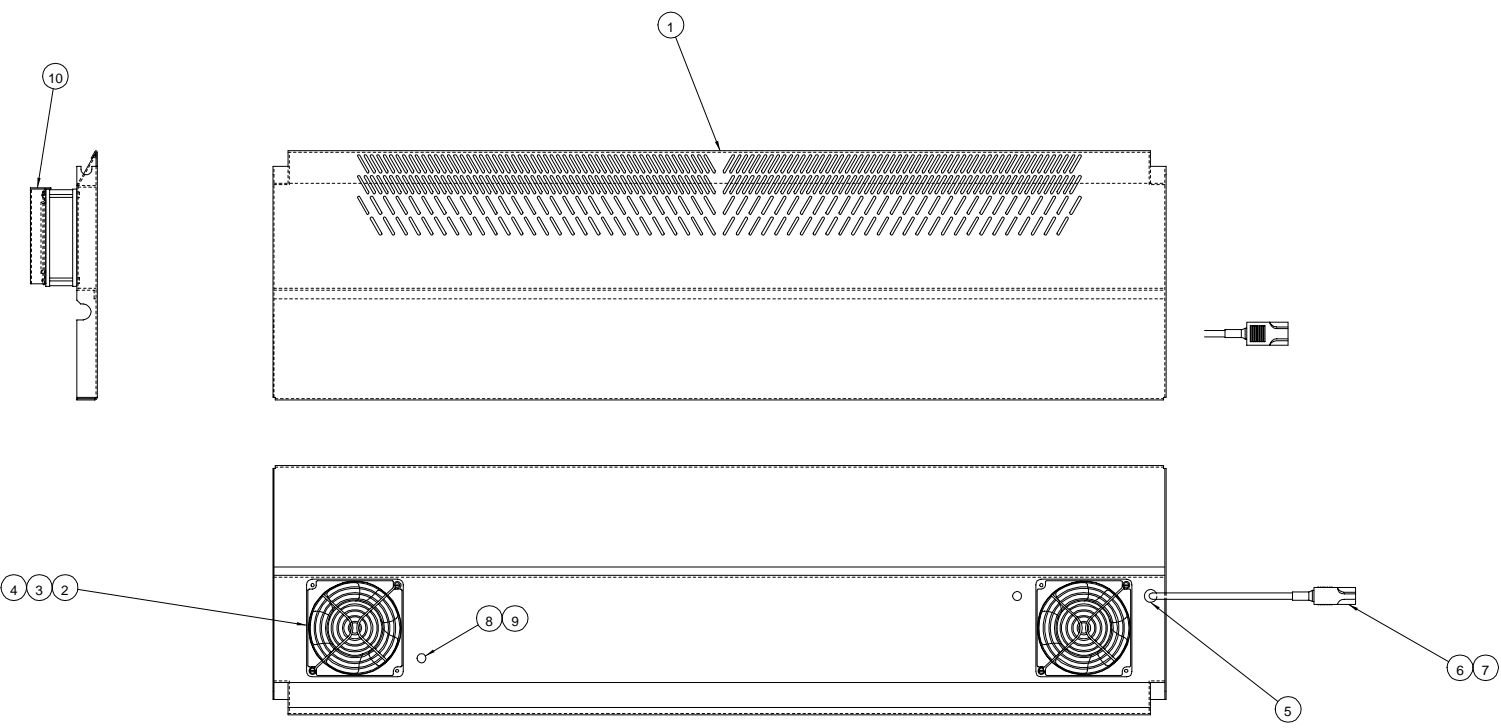
C

B

A

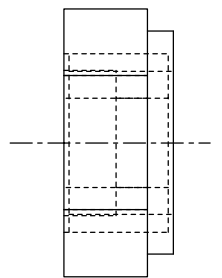
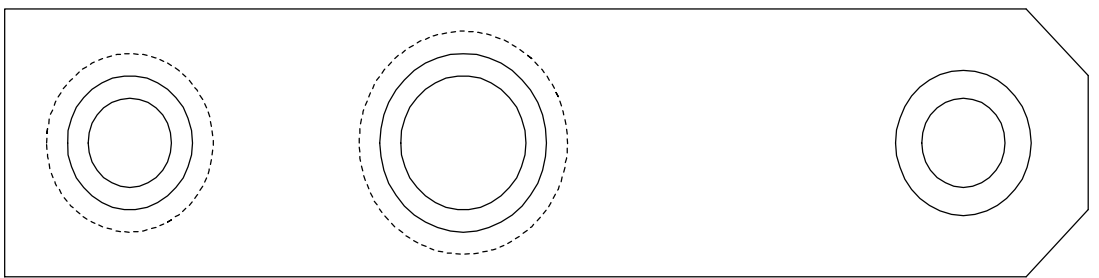
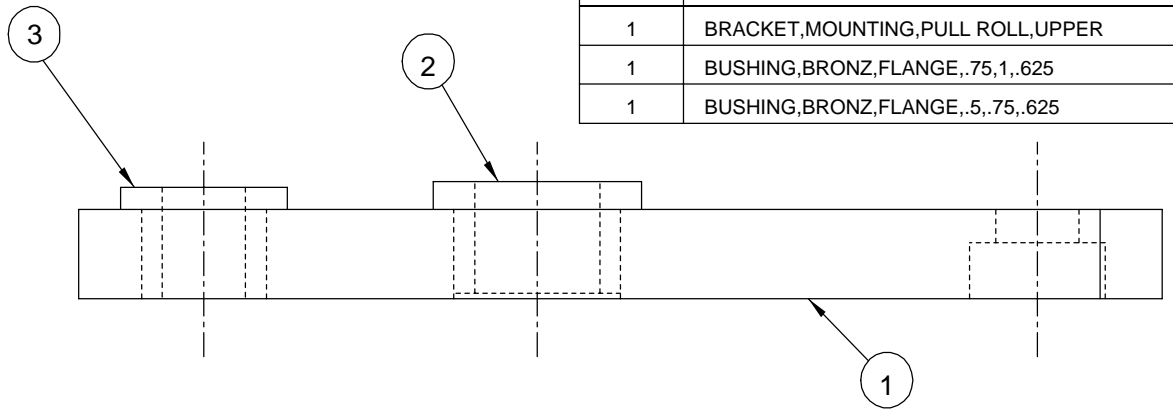
4 3 2

REQ'D	DESCRIPTION	PART NO.	ITEM
1	TABLE,INFEED,VAC	760-003	1
2	FAN,MUFFIN,230 /3-15-3451	182-101	2
2	GUARD,FAN	182-011	3
8	SCREW,PAN,6-32 X 2	-	4
1	RELIEF,STRAIN,CABLE /1214	175-006	5
1	ASSEMBLY,CABLE,POWER,VAC TABLE	001-127	6
2	RELIEF,STRAIN,CABLE /1077	175-003	8
4	CABLE,18/2	270-109	9
2	SHIELD,DEFLECTOR,FAN	585-003	10



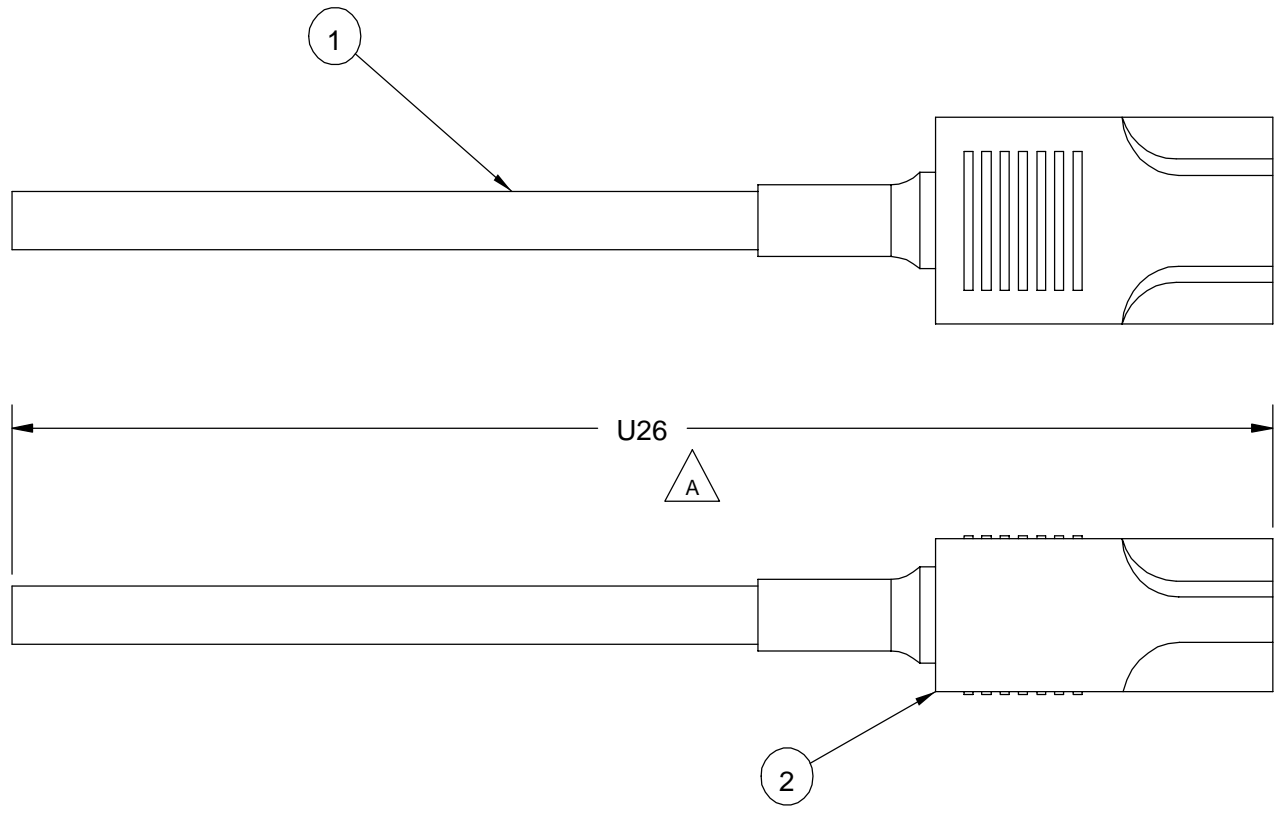
UNLESS OTHERWISE SPECIFIED TOLERANCE		FINISH		TITLE	
DM AS	TOL	TO BE	Pro-Tech Engineering		
SPRINK		✓	217 N. Burlington Rd. Madison, Wisconsin 53704		
.XX	P.184		Phone (608) 248-8844 Fax (608) 248-4838		
.X	P.250		ASSY.TBL,INFD,VAC,FALCON-36		
.XX	P.220		F-36		
.XXX	P.210	ANGLES	DATE	DRAWN BY:	DWG SCALE: Dep
.XXX	P.205	P ID	2-15-94	RAS	C4 001-067

REQ'D	DESCRIPTION	PART NO.	ITEM
1	BRACKET,MOUNTING,PULL ROLL,UPPER	510-010	1
1	BUSHING,BRONZ,FLANGE,.75,1,.625	040-008	2
1	BUSHING,BRONZ,FLANGE,.5,.75,.625	040-014	3



This print is the property of PRO-TECH ENGR. The information thereon is remitted in confidence.						
UNLESS OTHERWISE SPECIFIED TOLERANCE			Pro-Tech Engineering 2117 N. Stoughton Rd. Madison, Wisconsin 53704 Phone (608) 246-8844 Fax (608) 246-4685			
REVISION	DIM. AS SHOWN	TOL.				
	X/	P 1/64	125√	ASS'Y,ARM,PULL ROLL FALCON-36		
	X.	P .050				
	X.	P .020	ANGLE B 1D	DATE:	DRAWN BY:	DWG SCALE:
	X.X	P .010		4-5-94	RAS	A1
	X.XX	P .005		Dwg:	001-112	

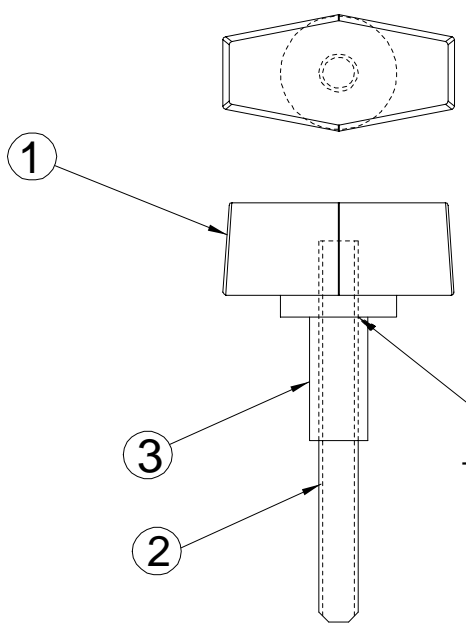
REQ'D	DESCRIPTION	PART NO.	ITEM
-	CABLE,POWER,18/3	270-110	1
1	PLUG,MALE	201-190	2



This print is the property of PRO-TECH ENGR. The information thereon is remitted in confidence.				Pro-Tech Engineering 2117 N. Stoughton Rd. Madison, Wisconsin 53704 Phone (608) 246-8844 Fax (608) 246-8645			
UNLESS OTHERWISE SPECIFIED TOLERANCE				TITLE:			
DIM. AS SHOWN	TOL.	FINISH TO BE		ASSEMBLY,CABLE,POWER,VAC TABLE FALCON 36			
X/X	P 1/64	125√		DATE:	DRAWN BY:	DWG SCALE:	Dwg:
X.	P .050			6-10-94	RAS	A1	001-127
X.X	P .020						
X.XX	P .010	ANGLES P 1D					
X.XXX	P .005						

REQ'D	DESCRIPTION	PART NO.	ITEM
1	KNOB,CLAMP,FEMALE,1/4-20	465-008	1
1	SET SCREW 1/4-20 X 2.5 CUP POINT	050-030	2
1	SPACER	720-001	3

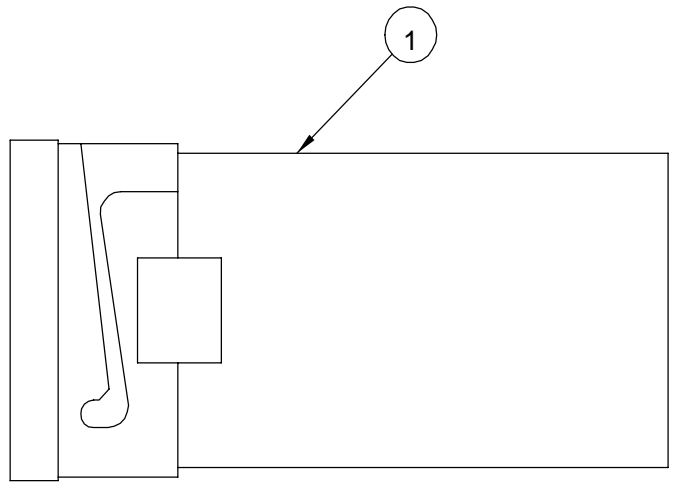
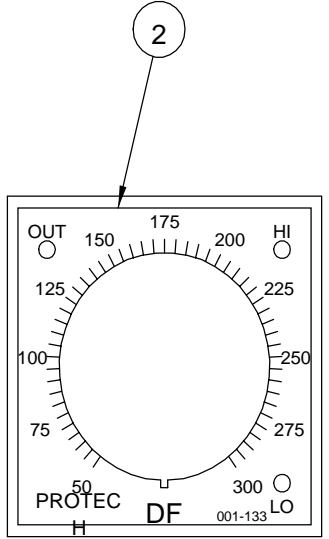
PROPRIETARY
 GBC PRO-TECH CLAIMS PROPRIETARY RIGHTS TO THE MATERIAL DISCLOSED ON THIS DRAWING. IT IS ISSUED IN CONFIDENCE FOR ENGINEERING INFORMATION ONLY AND SHALL NOT BE REPRODUCED, COPIED OR DISCLOSED IN WHOLE OR IN PART, OR USED FOR MANUFACTURE OR FOR ANY OTHER PURPOSE WITHOUT WRITTEN PERMISSION FROM GBC PRO-TECH



USE GREEN LOCKTITE TO LOCK SCREW IN PLACE

MS 10-5-96	J.S. 6-14-95	RAS 9-26-94	REVISION	2577	1014	0670	SHEET 1 OF		 4151 Anderson Road, DeForest, Wisconsin 53532 Phone (608) 246-8844 Fax (608) 246-8645
				UNLESS OTHERWISE SPECIFIED TOLERANCE			DIM. AS SHOWN	TOL.	
C	B	A	REVISION	X/X	P 1/64	125	ANGLES P 1D	DATE: 6-23-94	DRAWN BY: RAS
				X.	P .050			SCALE: A1	
				X.X	P .020			SIZE:	
				X.XX	P .010			RELEASE NO.	Dwg: 001-131
				X.XXX	P .005				

REQ'D	DESCRIPTION	PART NO.	ITEM
1	CONTROLLER,TEMPERATURE	230-003	1
1	OVERLAY,50-300,%%DF	450-004	2

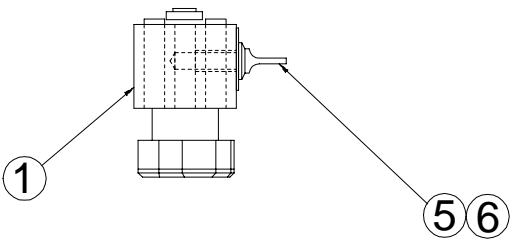


UNLESS OTHERWISE SPECIFIED TOLERANCE				Pro-Tech Engineering 2117 N. Stoughton Rd. Madison, Wisconsin 53704 Phone (608) 246-8844 Fax (608) 246-8645	
DIM. AS SHOWN	TOL	FINISH TO BE			
X/	P 1/	125√			
X	64				
X	P				
	.050				
X.	P				
X	.020				
XX	P				
X	.010				
XXX	P				
X	.005				

REVISION					

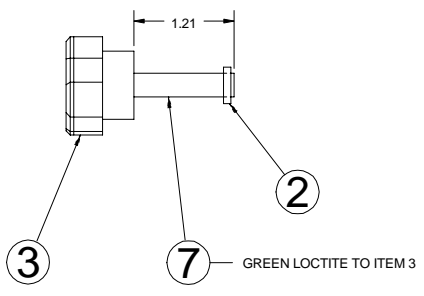
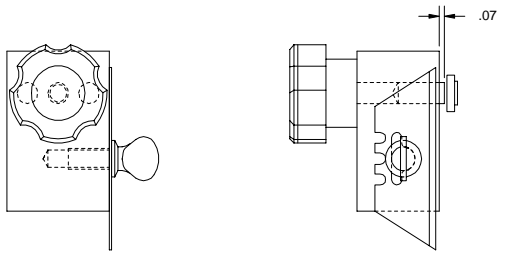
This print is the property of PRO-TECH ENGR. The information thereon is remitted in confidence.			
TITLE:		ASSEM,CONTROLLER,TEMP,%%DF	
DATE:	DRAWN BY:	DWG SCALE:	Dwg:
7-21-94	RAS	A1	001-133

REQ'D	DESCRIPTION	PART NO.	ITEM
1	HOLDER, BLADE	740-001	1
1	NUT, T-SLOT, 1/4-20 /3382	050-001	2
1	KNOB, KNURLED /DK-510	465-007	3
2	PIN, DOWEL, 1/4 X .5	095-190	4
1	SCREW, THUMB, 1/4-20 X .5	092-140	5
5	BLADE, RAZOR	475-002	6
1	SCREW, SET, 1/4-20 X 1.75 /25337	050-014	7



NOTE:
 SEE 001-044 FOR REST OF SLITTER ASSEMBLY.

A
 4 PRESS INTO PLACE AND GLUE WITH BLACK MAX 380



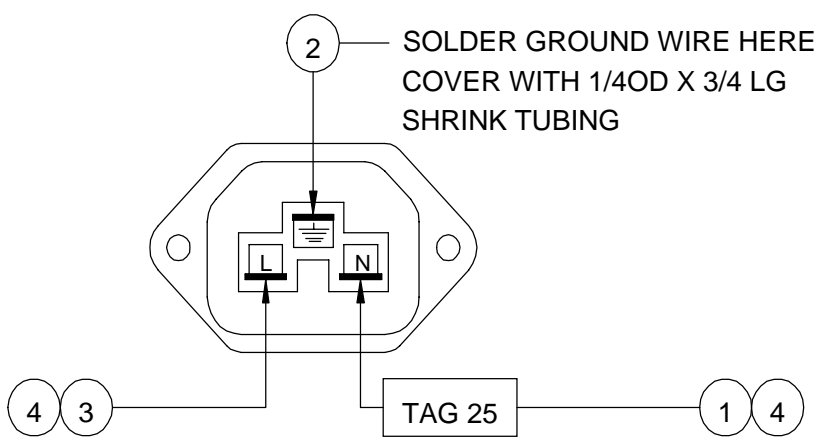
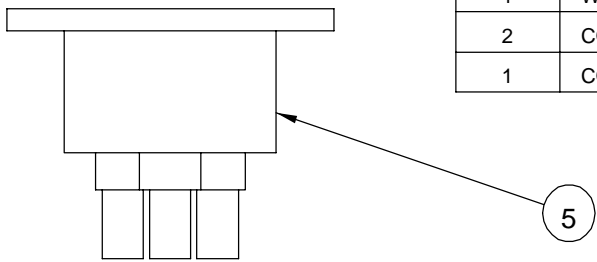
A	3271	A/H 3/5/99	ADD NOTES & DIMENSION LOCATING PINS
REV	ECN	BY	DESCRIPTION
UNLESS OTHERWISE SPECIFIED TOLERANCE			 4151 Anderson Road, DeForest, Wisconsin 53532 Phone (608) 246-8544 Fax (608) 246-8545
DM. AS SHOWN	TOL.	FINISH TO BE	
.XX	F .154	12/√	
X.	F .250		
X.X	F .250		TITLE: SLITTER ASSEMBLY FALCON 36
X.XX	F .010	ANGLES	DATE:
X.XXX	F .005	P. 10	RELEASE NO.
DRAWN BY:			SCALE: SIZE: Dwg: 001 - 135

REQ'D	DESCRIPTION	PART NO.	ITEM
2	TOWEL,WHITE	475-950	1
1	VIDEO	000-040	2
1	ZIPPY KNIFE	475-620	3
1	ALLEN WRENCH SET	475-230	4
4	1/4-20 x 2 SHCS	FLR STK ITEM	5
2	FUSE, SB, 3AG, 3A	186-200	6
1	TAPE MEASURE	475-100	7
			8
1	RUBBER CEMENT PICK-UP	930320	9
2	FUSE, SB, 3AG, 2.5A	186-220	10
1	BOX ACCESSORY	475-010	11
1	FALCON OPERATION MANUAL	930400	12

This print is the property of PRO-TECH ENGR. The information thereon is remitted in confidence.											
UNLESS OTHERWISE SPECIFIED TOLERANCE				Pro-Tech Engineering 2117 N. Stoughton Rd. Madison, Wisconsin 53704 Phone (608) 246-8844 Fax (608) 246-8645							
DIM. AS SHOWN		TOL.		FINISH TO BE		TITLE:					
X/		P 1/		125√		ACCESSORY KIT, FALCON					
X		64									
X.		.050									
X.		P									
X		.020									
X.X		P		ANGLES		DATE:		DRAWN BY:		DWG SCALE:	
X		.010		P 1D		1-29-96		RLM		A1	
X.XX		P								Dwg	
X		.005								001-137	

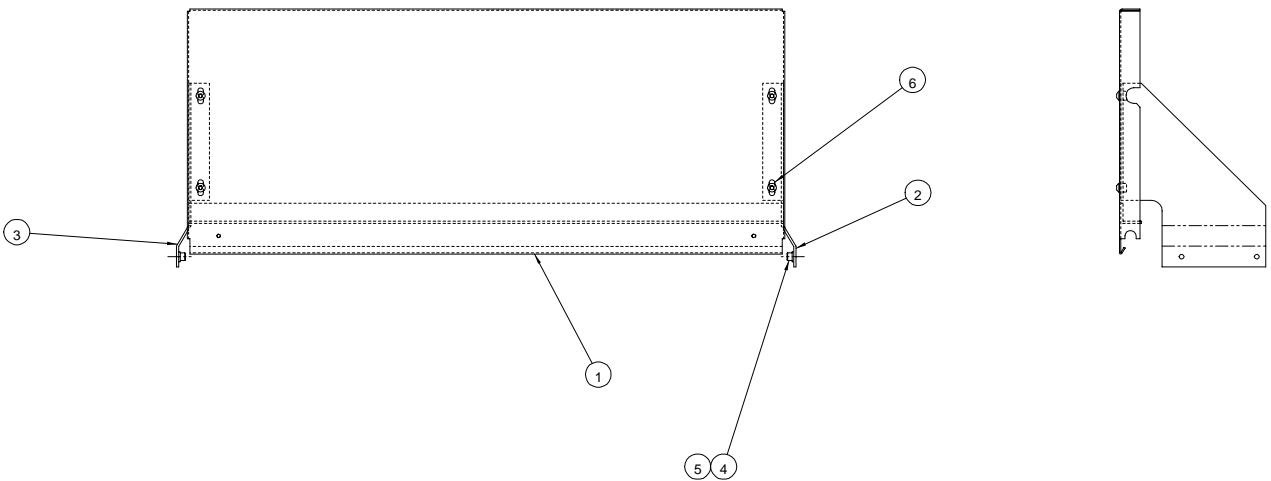
2993	11/11/97	B
2991	11-5-97	A

REQ'D	DESCRIPTION	PART NO.	ITEM
1	WIRE,RED,22AWG,#F085	-	1
1	WIRE,GREEN/YELLOW,GROUND,#F082	-	2
1	WIRE,LT BLUE,22AWG,#F083	-	3
2	CONNECTOR,PUSH ON	-	4
1	CONNECTOR,RECEPTACLE,FEMALE	201-185	5



This print is the property of PRO-TECH ENGR. The information thereon is remitted in confidence.			
UNLESS OTHERWISE SPECIFIED TOLERANCE		Pro-Tech Engineering 2117 N. Stoughton Rd. Madison, Wisconsin 53704 Phone (608) 246-8844 Fax (608) 246-8645	
DIM. AS SHOWN	TOL.		
X/	P 1/	125√	
X	64		
X	P		
X	.050		
X	P		
X	.020		
X,X	P	ANGLE	
X	.010	P ^S 1D	
X,XX	P	DATE:	
X	.005	9-27-94	
		DRAWN BY:	
		RAS	
		DWG SCALE:	
		A1	
		Dwg:	
		001-172	

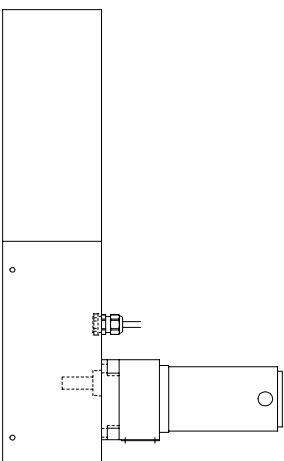
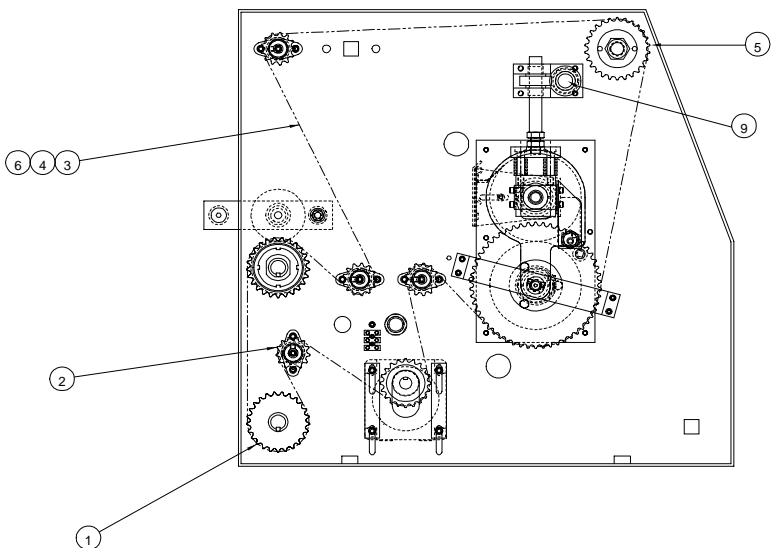
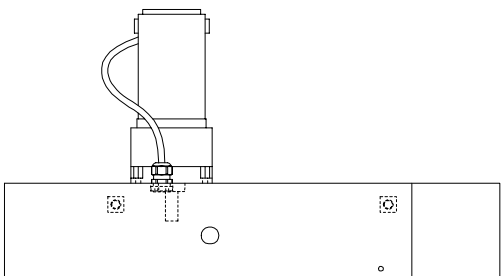
REQ'D	DESCRIPTION	PART NO.	ITEM
1	TABLE,INFEED	760-057	1
1	BRACKET,TABLE,REAR,LEFT	510-064	2
1	BRACKET,TABLE,REAR,RIGHT	510-062	3
4	SHCS,1/4-20 X .5	-	4
4	WASHER,LOCK,1/4	-	5
4	BHCS,1/4-20 X .5	-	6



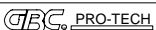
UNLESS OTHERWISE SPECIFIED TOLERANCE				Pro-Tech Engineering <small>2117 S. Douglas St., Madison, WI 53704-1076</small> <small>Phone (608) 248-8844 Fax (608) 248-4855</small>															
<table border="1"> <tr> <th>DWG. AS SHOWN</th> <th>TOL.</th> <th>FINISH TO BE</th> </tr> <tr> <td>XX</td> <td>P/1/</td> <td rowspan="2">√</td> </tr> <tr> <td>X</td> <td>P</td> </tr> <tr> <td>XX</td> <td>P</td> <td></td> </tr> <tr> <td>XX</td> <td>P</td> <td></td> </tr> </table>	DWG. AS SHOWN	TOL.	FINISH TO BE	XX	P/1/	√	X	P	XX	P		XX	P		TITLE: ASSEMBLY, TABLE, OUTFEED, OPTION F - 36		DATE: 9-29-94	DRAWN BY: RAS	DWG. SCALE: c4
DWG. AS SHOWN	TOL.	FINISH TO BE																	
XX	P/1/	√																	
X	P																		
XX	P																		
XX	P																		
<table border="1"> <tr> <th>ANGLES</th> <th>P. ID.</th> </tr> <tr> <td>XX</td> <td>P</td> </tr> <tr> <td>XX</td> <td>P</td> </tr> </table>	ANGLES	P. ID.	XX	P	XX	P					Dwg: 001-174								
ANGLES	P. ID.																		
XX	P																		
XX	P																		

REQ'D	DESCRIPTION	PART NO.	ITEM
1	ASSEMBLY.REWIND.FALCON	001-045	1
1	ASSY.SPROCKET.IDLER	001-027	2
101.25	CHAIN,35	400-120	3
1	CHAIN.LINK.MASTER	400-140	4
1	ASSY.SPROCKET.FALCON	001-412	5
1	LINK.CHAIN,1/2	400-130	6
1	BUSH.,BRONZE, FB1016-6	040-003	9

PROPRIETARY
 GBC PRO-TECH CLAIMS PROPRIETARY RIGHTS TO THE MATERIAL DISCLOSED ON THIS DRAWING. IT IS ISSUED IN CONFIDENCE FOR ENGINEERING INFORMATION ONLY AND SHALL NOT BE REPRODUCED, COPIED OR DISCLOSED IN WHOLE OR IN PART, OR USED FOR MANUFACTURE OR FOR ANY OTHER PURPOSE WITHOUT WRITTEN PERMISSION FROM GBC PRO-TECH



3036		2638		SHEET 1 OF 1	
REV	DATE	BY	CHKD	UNLESS OTHERWISE SPECIFIED TOLERANCE	
A		V		DM: AS	TOL.
B				SURF: XX	F 1/64
				XX	P .050
				XX	P .020
				XXX	P .010
				XXX	P .005
				ANGLES	DATE: 10-10-94
				P 10	RELEASE NO.
				DRAWN BY:	SCALE: 1/1
				RAS	SIZE: C
				001-177	Dwg

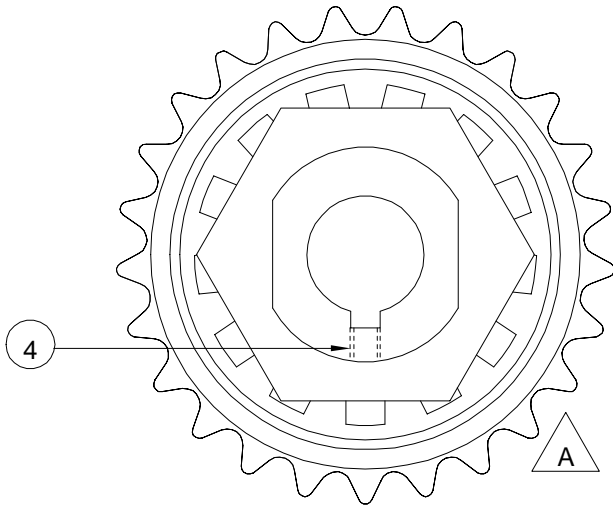
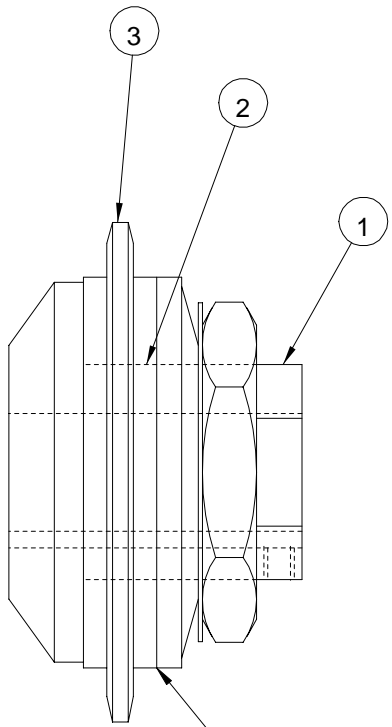


4151 Anderson Road, DN Forest, Wisconsin 53032
 Phone (800) 726-8844 Fax (800) 245-8845

TITLE: ASSY.REWIND,OPTIONAL FALCON-36

PROPRIETARY
 GBC PRO-TECH CLAIMS PROPRIETARY RIGHTS TO THE MATERIAL DISCLOSED ON THIS DRAWING. IT IS ISSUED IN CONFIDENCE FOR ENGINEERING INFORMATION ONLY AND SHALL NOT BE REPRODUCED, COPIED OR DISCLOSED IN WHOLE OR IN PART, OR USED FOR MANUFACTURE OR FOR ANY OTHER PURPOSE WITHOUT WRITTEN PERMISSION FROM GBC PRO-TECH

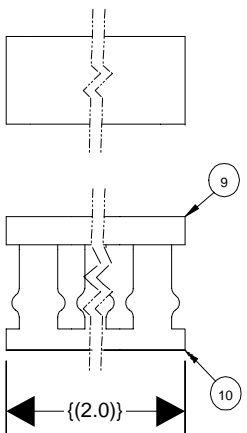
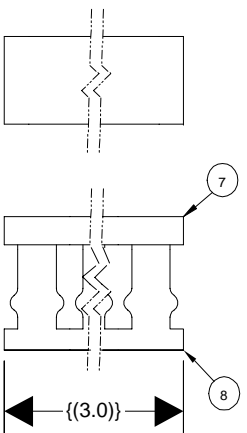
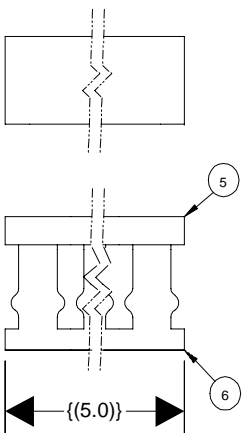
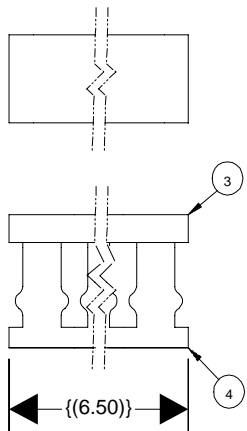
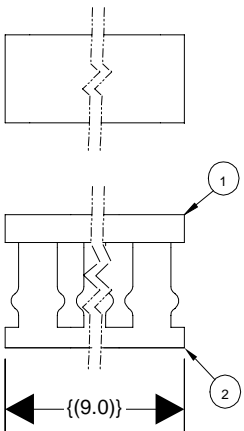
REQ'D	DESCRIPTION	PART NO.	ITEM
1	TORQUE LIMITER	435-240	1
1	BUSHING, TORQUE LIMITER	040-120	2
1	SPROCKET, 35, 25T	435-245	3
1	BRASS TIP SET SCREW 10-24 X 1/4	050-024	4



APPLY LUBRIPLATE DOW #44 GREASE TO EACH SURFACE OF BRAKE PADS.

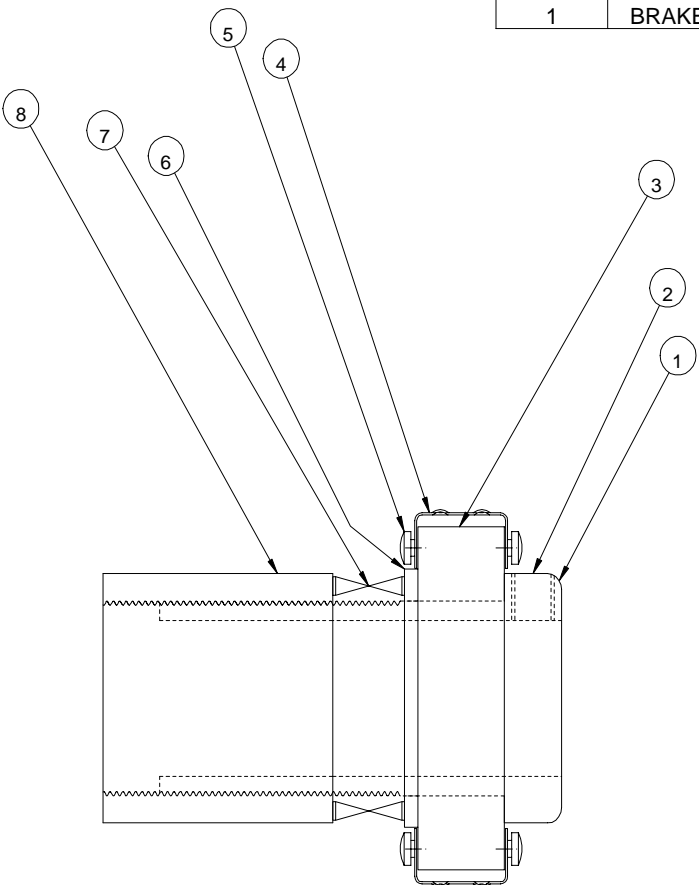
M		2577	SHEET 1 OF 1			 4151 Anderson Road, DeForest, Wisconsin 53532 Phone (608) 246-8844 Fax (608) 246-8645	
S		1019	UNLESS OTHERWISE SPECIFIED TOLERANCE				
JJS		6-15-95	DIM. AS SHOWN	TOL.	FINISH TO BE	TITLE:	
A			X/	P 1/64	125 ✓	ASSEMBLY, TORQUE, LIMITER	
B			X.	P .050		F - 36	
			X.	P .020		DATE: 10-19-94	DRAWN BY:
			X.X	P .010	ANGLES P 1D	RELEASE NO.	RAS
			X.XX	P .005		SCALE: 1/1	SIZE: A
			X			Dwg: 001-180	

REQD	DESCRIPTION	PART NO.	ITEM
1	DUCT COVER, 1 X 9" LG	180-130	1
1	DUCT BASE, 1 X 9" LG (WITH ADHESIVE)	180-140	2
1	DUCT COVER, 1 X 6.5" LG	180-130	3
1	DUCT BASE, 1 X 6.5" LG (WITH ADHESIVE)	180-140	4
1	DUCT COVER, 1 X 5" LG	180-130	5
1	DUCT BASE, 1 X 5" LG (WITH ADHESIVE)	180-140	6
1	DUCT COVER, 1 X 3" LG	180-130	7
1	DUCT BASE, 1 X 3" LG (WITH ADHESIVE)	180-140	8
2	DUCT COVER, 1 X 2" LG	180-130	9
2	DUCT BASE, 1 X 2" LG (WITH ADHESIVE)	180-140	10



REV	ECN	BY	DESCRIPTION	
UNLESS OTHERWISE SPECIFIED TOLERANCE:			GBC PRO-TECH 4151 Anderson Road, DeForest, Wisconsin 53532 Phone (908) 246-8844 Fax (908) 246-8845 TITLE: PANDUIT ASSEMBLY FALCON 36	
DIM AS SHOWN	TOL.	FINISH TO USE		
XX	P 1/64	✓		
X	P .050			
XX	P .020			
X,XXX	P .010	ANGLES P 1D	DATE:	DRAWN BY:
X,XXX	P .005	RELEASE	NO.	SCALE: SIZE: Dwg
				001 - 232

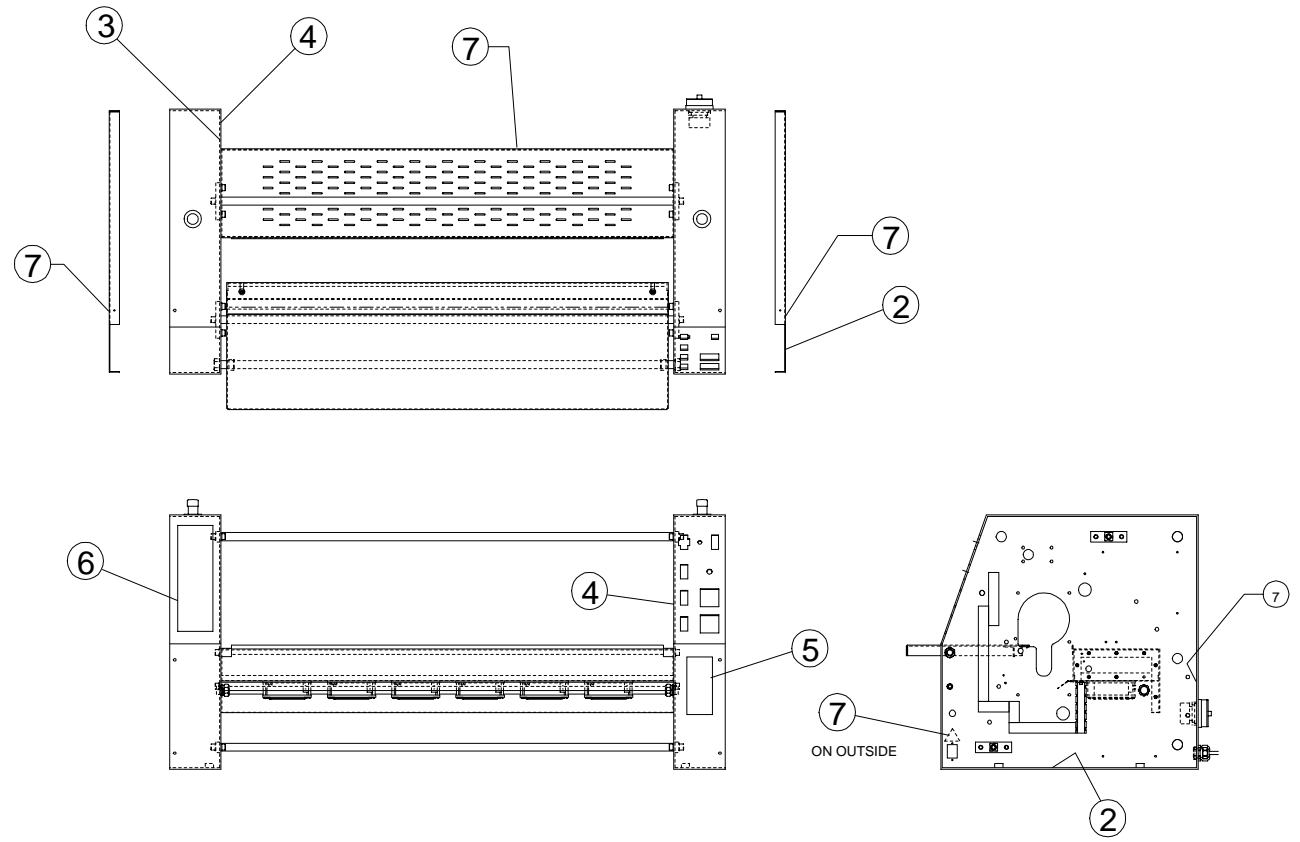
REQ'D	DESCRIPTION	PART NO.	ITEM
1	HUB,BRAKE,REWIND	625-002	1
1	SCREW,SET,3/8-16 X .250	050-023	2
1	CHUCK,CORE,QUICK RELEASE,REWIND	530-006	3
3	GRIPPER,CORE	100-032	4
6	SCREW,SELF-TAPING,#6-32 X .375	-	5
1	WASHER,NYLON	035-100	6
1	SPRING,WAVE	089-130	7
1	BRAKE,ADJUST NUT,REWIND	625-004	8



UNLESS OTHERWISE SPECIFIED				TOLERANCE			
DIM. AS SHOWN	FRACTION	DEC.	FRACTION	DEC.	FRACTION	DEC.	FRACTION
.XX	F 164		1/16		1/32		1/64
X	F .050		1/20		1/32		1/64
XX	F .020		1/50		1/64		1/128
XXX	F .010		1/100		1/128		1/256
XXXX	F .005		1/200		1/256		1/512
DATE:				DRAWN BY:			
2-22-95				K.L.			
DWG. SCALE:				Dwg. No.:			
C1				001-237			

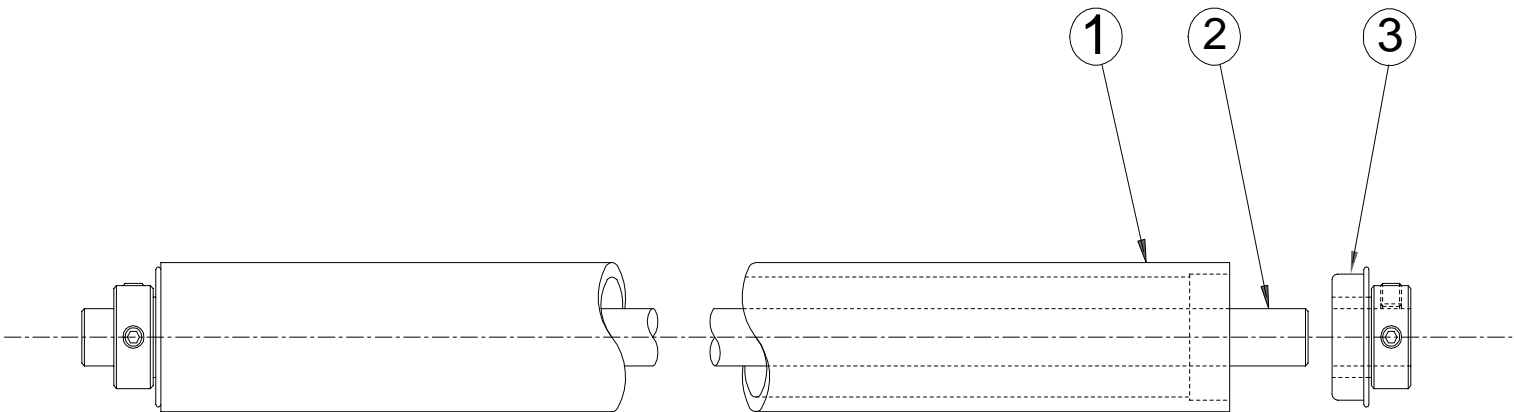
REQ'D	DESCRIPTION	PART NO.	ITEM
2	DECAL,DANGER HAZARDOUS VOLTAGE	450-131	2
1	DECAL,WARNING MOVING PARTS	450-132	3
2	DECAL,WARNING CRUSH AND BURN,RIGHT	450-134	4
1	DECAL,WARNING READ MANUAL	450-135	5
1	DECAL,READ SAFETY INSTRUCTIONS	450-136	6
5	DECAL, HIGH VOLTAGE	450-035	7

PLACE INSIDE
CABINET
IN VISIBLE LOCATION



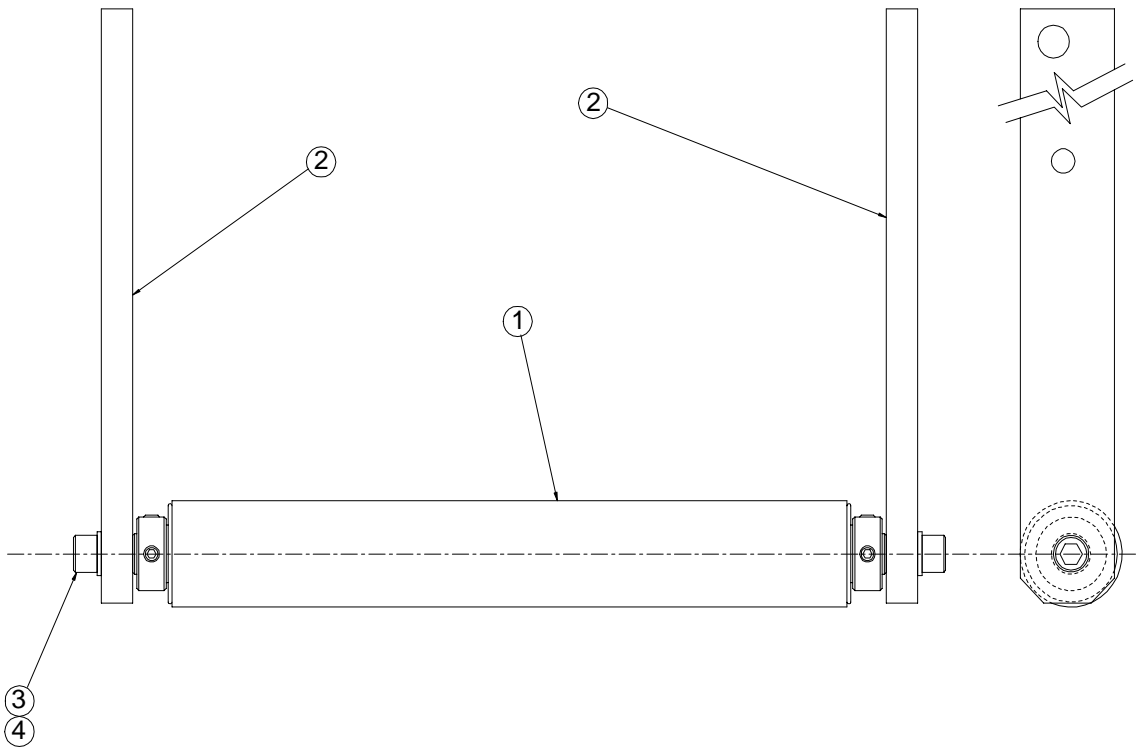
UNLESS OTHERWISE SPECIFIED TOLERANCES				Pro-Tech Engineering 3117 N. Douglas Rd. Madison, Wisconsin 53704 Phone (608) 246-8844 Fax (608) 246-9545			
DIM. AS SHOWN	TOL.	FINISH	TO BE	TITLE KIT, SAFETY LABEL FALCON 36			
.X/X	F 1/64	√	F	DATE	DRAWN BY:	DWG SCALE:	Dwg
.X/X	F 0.03			3-2-95	K.L.	CB	001-260
.X/XX	F 0.10	ANGLES					
.X/XXX	F 0.05	P 10					

REQ'D	DESCRIPTION	PART NO.	ITEM
1	IDLER,INFEED,PAPER	620-017	1
1	SHAFT,IDLER,INFEED,PAPER	710-057	2
2	BEARING,FLANGE	026-105	3



This print is the property of PRO-TECH ENGR. The information thereon is remitted in confidence.										
UNLESS OTHERWISE SPECIFIED TOLERANCE			Pro-Tech Engineering 2117 N. Stoughton Rd. Madison, Wisconsin 53704 Phone (608) 246-8844 Fax (608) 246-8645							
DIM. AS SHOWN	TOL.	FINISH TO BE								
X/X	P 1/64	$125\sqrt{\quad}$	TITLE: ASSEMBLY, IDLER, PAPER FALCON 36							
X.	P .050									
X.X	P .020									
X.XX	P .010						ANGLES P 1D	DATE: 6-23-95	DRAWN BY: RAS	DWG SCALE: A2
X.XXX	P .005									Dwg: 001-310

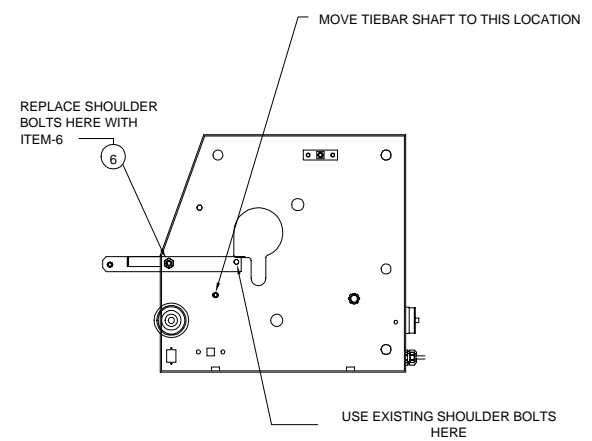
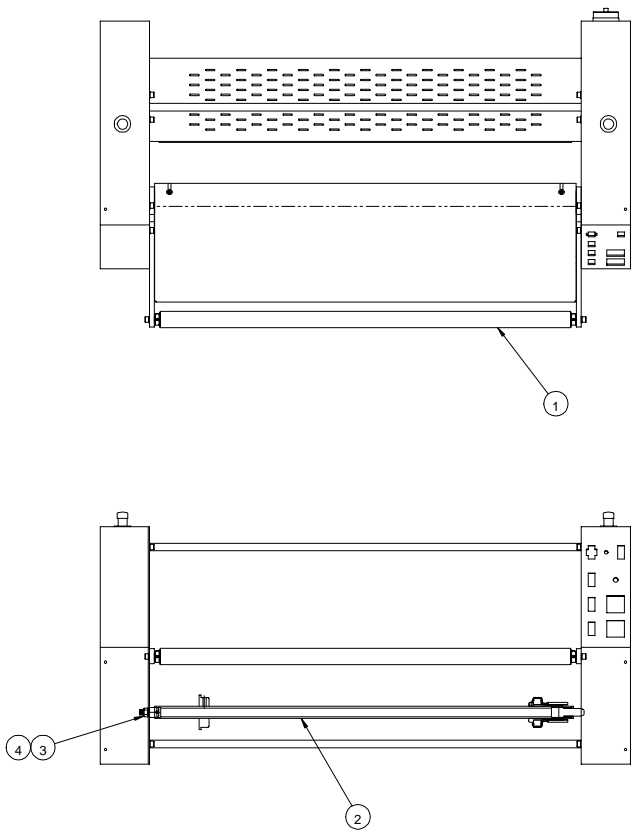
REQ'D	DESCRIPTION	PART NO.	ITEM
1	ASSEMBLY, IDLER, PAPER	001-310	1
2	BRACKET, MOUNTING, IDLER	510-141	2
2	SHCS, 3/8-16 X 1	-	3
2	WASHER, LOCK, 3/8	-	4



UNLESS OTHERWISE SPECIFIED		TOLERANCE		FINISH		TITLE	
DR. AS	TOL.	TO BE	TITLE		DATE		DRWG SCALE
SD	P.154	√	ASSEMBLY, IDLER, INFEED, PAPER		C 1		Dep
X	P.150		FALCON 36				001-311
X.X	P.150						
X.XX	P.150						
X.XXX	P.150						

REQ'D	DESCRIPTION	PART NO.	ITEM
1	ASSEMBLY, IDLER, INFEED, PAPER	001-311	1
1	ASSEMBLY, REWIND	001-317	2
1	SHAFT, DUMMY	710-021	3
1	NUT, HEX, 1/2-13	-	4
2	SHCS 3/8-16 X 1.25		6

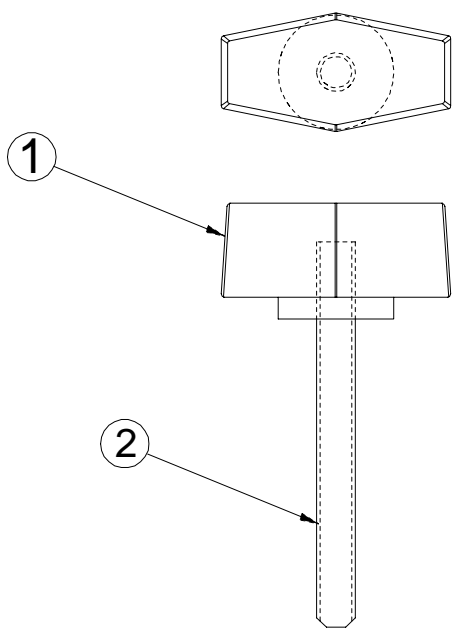
PROPRIETARY
 GBC PRO-TECH CLAIMS PROPRIETARY RIGHTS TO THE MATERIAL DISCLOSED ON THIS DRAWING. IT IS ISSUED IN CONFIDENCE FOR ENGINEERING INFORMATION ONLY AND SHALL NOT BE REPRODUCED, COPIED OR DISCLOSED IN WHOLE OR IN PART, OR USED FOR MANUFACTURE OR FOR ANY OTHER PURPOSE WITHOUT WRITTEN PERMISSION FROM GBC PRO-TECH



SHEET 1 OF 1		UNLESS OTHERWISE SPECIFIED TO EXCEPT		GBC PRO-TECH	
DM AS	TOL.	FRESH	4151 Anderson Road, DeForest, Wisconsin 53532	Phone (800) 248-8844 Fax (800) 248-8845	
SKETCH		TO BE	TITLE: ASSEMBLY, UNWIND, PAPER FALCON 36		
X	P. 156	125	DATE: 8-22-95	DRAWN BY: RAS	SCALE: 1/1
X	P. 250	✓	RELEASE	SIZE: C	Dep: 001-321
X	P. 251		ANGLES		
X	P. 210		P. 10		
X	P. 205				

PROPRIETARY
 GBC PRO-TECH CLAIMS PROPRIETARY RIGHTS TO THE MATERIAL DISCLOSED ON THIS DRAWING. IT IS ISSUED IN CONFIDENCE FOR ENGINEERING INFORMATION ONLY AND SHALL NOT BE REPRODUCED, COPIED OR DISCLOSED IN WHOLE OR IN PART, OR USED FOR MANUFACTURE OR FOR ANY OTHER PURPOSE WITHOUT WRITTEN PERMISSION FROM GBC PRO-TECH

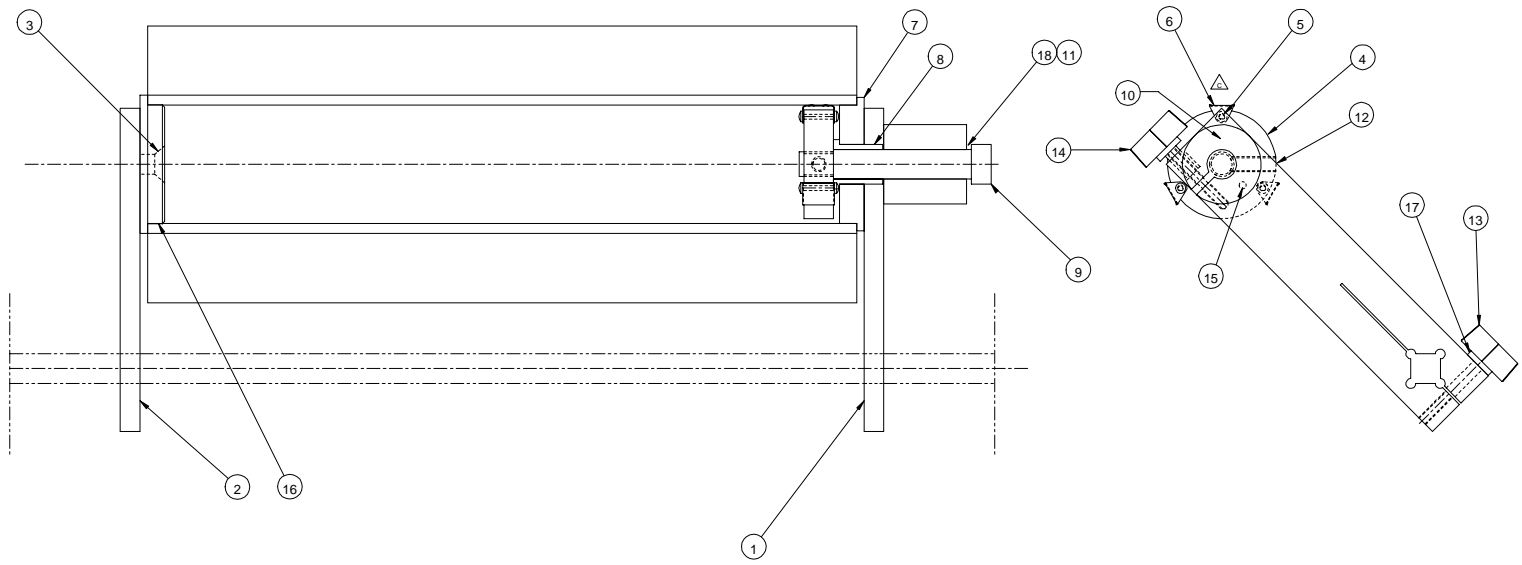
REQ'D	DESCRIPTION	PART NO.	ITEM
1	KNOB,CLAMP,FEMALE,1/4-20	465-008	1
1	SET SCREW 1/4-20 X 2 1/2 CUP POINT	050-030	2



SHEET 1 OF			 4151 Anderson Road, DeForest, Wisconsin 53532 Phone (608) 246-8844 Fax (608) 246-8645	
UNLESS OTHERWISE SPECIFIED TOLERANCE				
DIM. AS SHOWN	TOL.	FINISH TO BE	TITLE: ASSEMBLY, KNOB, CLAMP FALCON 36	
X.X	P 1/64			
X.	P .050			
X.X	P .020			
X.XX	P .010	ANGLES P 1 D	DATE: 10-30-95	DRAWN BY: RAS
X.XXX	P .005		RELEASE NO.	SCALE: A1
REVISION MS 10-4-96 2577 A			SIZE:	Dwg: 001-332

REQ'D	DESCRIPTION	PART NO.	ITEM
1	BRACKET, MOUNTING, UNWIND, RIGHT	510-155	1
1	BRACKET, MOUNTING, UNWIND, LEFT	510-153	2
1	FHSCH, 1/2-13 X 1 1/4		3
1	CHUCK, CORE, QUICK RELEASE	530-028	4
6	SCREW, SELF-TAP, 6-32 X .38		5
3	GRIPPER, CORE	100-032	6
1	CHUCK, CORE	530-000	7
1	BUSH, BRNZ., .75, 1, 1.25 / FB1216-10	040-018	8
1	BOLT, SHLDR., .75, 3, 5/8-11		9
1	BRAKE, UNWIND	625-000	10
1	SPRING, WAVE, .75 / SSR-0100	089-106	11
1	SETSCREW, 3/8 - 16 X 3/8, BRASS TIP	050-022	12
2	ASSEMBLY, KNOB, CLAMP	001-332	13
1	ASSEMBLY, KNOB, CLAMP, BRAKE	001-131	14
1	PIN, DOWEL, 3/16 X .75	095-180	15
1	CHUCK, CORE	530-014	16
2	WASHER, FEND, 1/4 X 1/2	-	17
1	WASHER, THRUST/TRA-1220	032-291	18

PROPRIETARY
 GBC PRO-TECH CLAIMS PROPRIETARY RIGHTS TO THE MATERIAL DISCLOSED ON THIS DRAWING. IT IS ISSUED IN CONFIDENCE FOR ENGINEERING INFORMATION ONLY AND SHALL NOT BE REPRODUCED, COPIED OR DISCLOSED IN WHOLE OR IN PART, OR USED FOR MANUFACTURE OR FOR ANY OTHER PURPOSE WITHOUT WRITTEN PERMISSION FROM GBC PRO-TECH

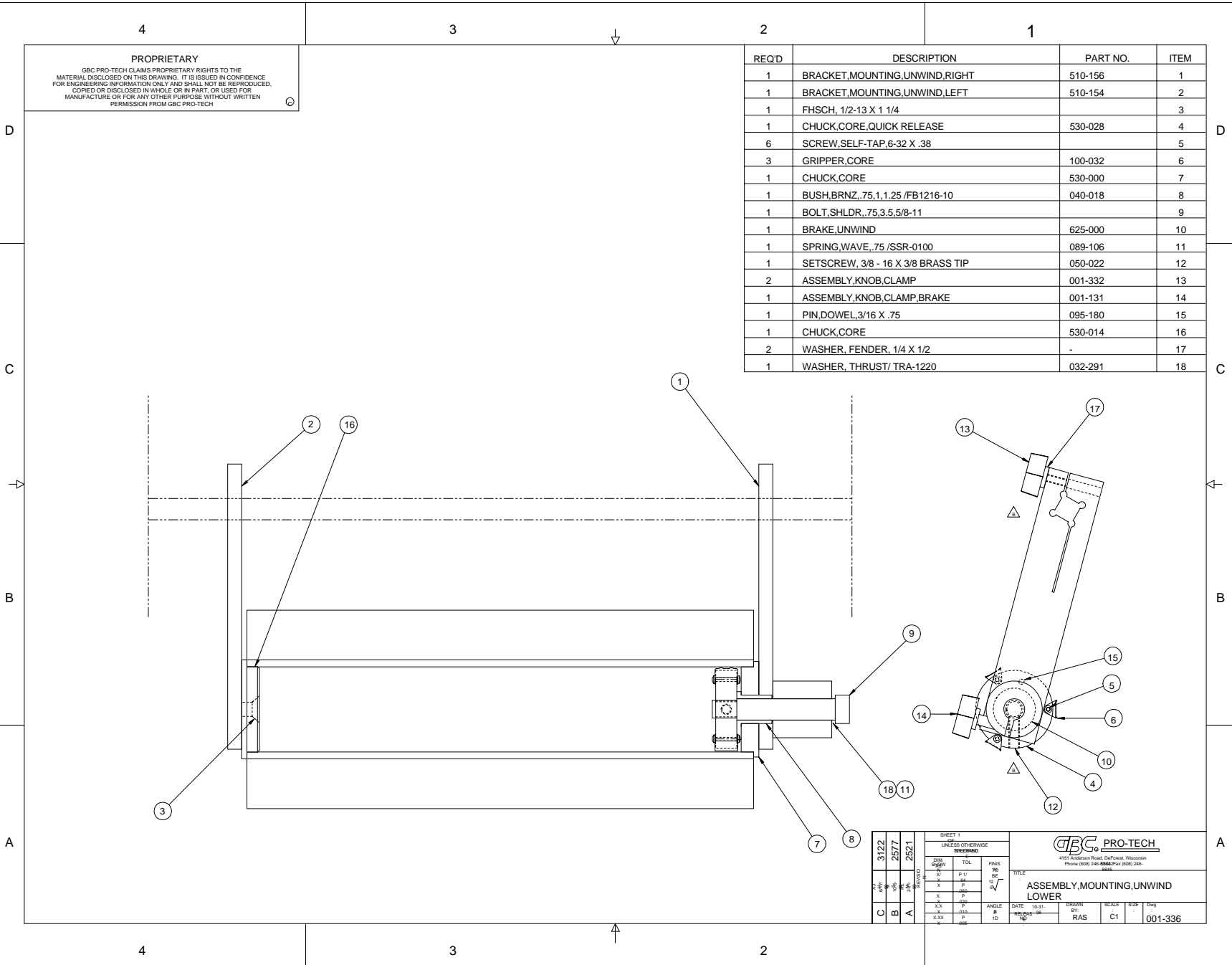


SHEET 1		UNLESS OTHERWISE SPECIFIED		GBC PRO-TECH	
4150 Technology Road, Chetek, Wisconsin		Phone (808) 248-8842 Fax (808) 246-8842		TITLE	
ASSEMBLY, UNWIND, UPPE		R		DATE	
10/27/95		DESIGN BY		SCALE	
RAS		C		SIZE	
001-335					

QTY	3122	2577	2521	2500
UNIT	PCS	PCS	PCS	PCS
DESCRIPTION	C	B	A	
DATE				

REQD	DESCRIPTION	PART NO.	ITEM
1	BRACKET,MOUNTING,UNWIND,RIGHT	510-156	1
1	BRACKET,MOUNTING,UNWIND,LEFT	510-154	2
1	FHSCH, 1/2-13 X 1 1/4		3
1	CHUCK,CORE,QUICK RELEASE	530-028	4
6	SCREW,SELF-TAP,6-32 X .38		5
3	GRIPPER,CORE	100-032	6
1	CHUCK,CORE	530-000	7
1	BUSH,BRNZ,.75,1,1.25 /FB1216-10	040-018	8
1	BOLT,SHLDR,.75,3.5,5/8-11		9
1	BRAKE,UNWIND	625-000	10
1	SPRING,WAVE,.75 /SSR-0100	089-106	11
1	SETScrew, 3/8 - 16 X 3/8 BRASS TIP	050-022	12
2	ASSEMBLY,KNOB,CLAMP	001-332	13
1	ASSEMBLY,KNOB,CLAMP,BRAKE	001-131	14
1	PIN,DOWEL,3/16 X .75	095-180	15
1	CHUCK,CORE	530-014	16
2	WASHER, FENDER, 1/4 X 1/2	-	17
1	WASHER, THRUST/ TRA-1220	032-291	18

PROPRIETARY
 GBC PRO-TECH CLAIMS PROPRIETARY RIGHTS TO THE MATERIAL DISCLOSED ON THIS DRAWING. IT IS ISSUED IN CONFIDENCE FOR ENGINEERING INFORMATION ONLY AND SHALL NOT BE REPRODUCED, COPIED OR DISCLOSED IN WHOLE OR IN PART, OR USED FOR MANUFACTURE OR FOR ANY OTHER PURPOSE WITHOUT WRITTEN PERMISSION FROM GBC PRO-TECH



3122		2577		2521	
DATE	BY	DATE	BY	DATE	BY
C	A	B	A		

SHEET 1
 UNLESS OTHERWISE INDICATED

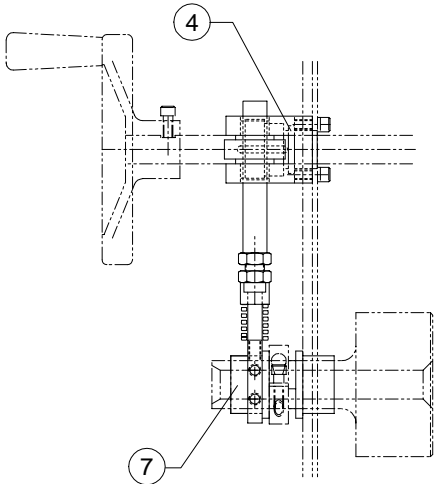
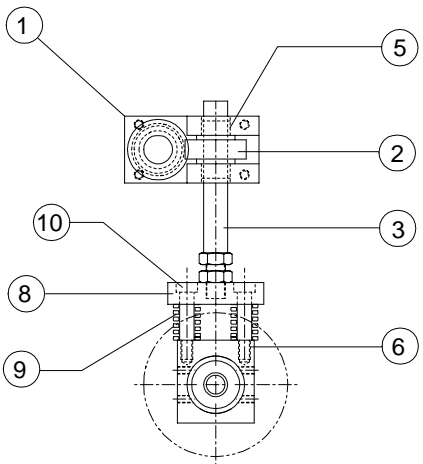
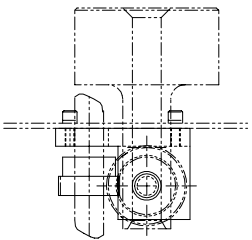
CON	TOL	FMS
StgW		TD
		SE
X	P1/	12
X	AP	AV
X	AP	
X	AP	
X-XX	AP	
X	AP	

ANGLE # 10
 DATE 10-91
 DRAWN BY RAS
 SCALE C1
 SIZE 001-336

GBC PRO-TECH
 4117 Wisconsin Road, DelFond, Wisconsin
 Phone (808) 246-8842 Fax (808) 246-8843

TITLE
ASSEMBLY, MOUNTING, UNWIND LOWER

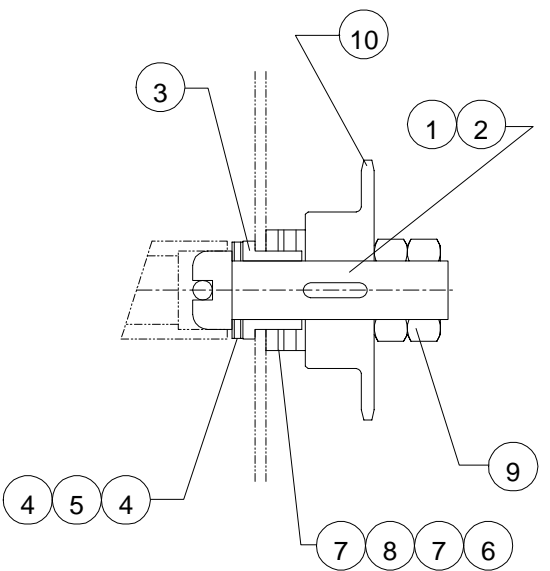
REQ'D	DESCRIPTION	PART NO.	ITEM
1	BLCK,GEAR	570-001	1
1	GEAR,HELI,RH,MOD	570-003	2
1	SCRW,ACME,MOD	645-001	3
1	BUSH,BRNZ,FLG,.75,1,.75 /FB1216-6	040-004	4
2	BUSH,BRZ,FLG,.62,.75,.50 /FB1012-4	040-001	5
1	BLK,BRG,ROLL,MAIN,UPR	501-003	6
1	BUSH,BRNZ,FLNG,1.25,1.5,1 /FB2024-8	040-009	7
1	BLOCK,SPRING,PLATE,BEARING	501-004	8
2	SPRING,COMPRESSION,536LBS/in	089-004	9
2	STRIP 3/8 x 1 1/4	-	10



PROPRIETARY
 GBC PRO-TECH CLAIMS PROPRIETARY RIGHTS TO THE MATERIAL DISCLOSED ON THIS DRAWING. IT IS ISSUED IN CONFIDENCE FOR ENGINEERING INFORMATION ONLY AND SHALL NOT BE REPRODUCED, COPIED OR ENCLOSED IN WHOLE OR IN PART, OR USED FOR MANUFACTURE OR FOR ANY OTHER PURPOSE WITHOUT WRITTEN PERMISSION FROM GBC PRO-TECH

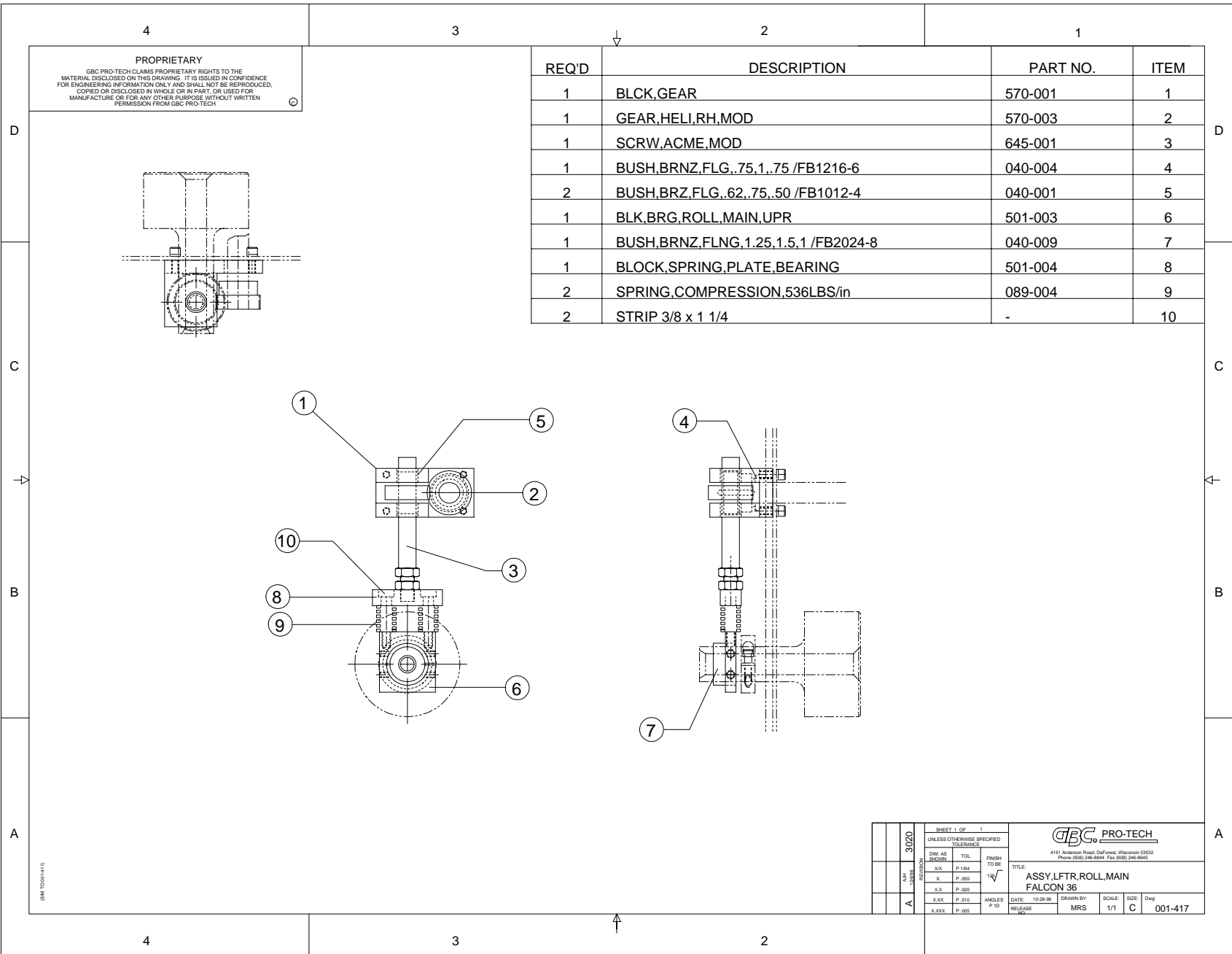
SHEET 1 OF 1		UNLESS OTHERWISE SPECIFIED TOLERANCE			
DIM AS SHOWN	TOL.	FINISH TO BE		4111 Avenida Real, California Woodside 94062 Phone (800) 248-8844 Fax (650) 248-8646	
XX	P.184	✓		TITLE:	
X	P.050			ASSY,LFTR,ROLL,MAIN	
XX	P.020			FALCON 36	
XXX	P.010	DATE:	8-28-03	DRAWN BY:	RAS
XXXX	P.005	RELEASE		SCALE:	1/1
				SIZE:	C
				DWG:	001-411

REQ'D	DESCRIPTION	PART NO.	ITEM
1	SHAFT,DRIVE,REWIND,FALCON	710-008	1
1	KEY,3/16 X .62	-	2
1	BUSH,BRONZE,.75 X 1 X .75 /FB1216-6	040-004	3
2	WASHER,THRUST,.75 X .030 /TRA-1220	032-291	4
1	BEARING,THRUST,.75 /NTA-1220	032-292	5
1	WASHER,THRUST,1 X .153 /TRE-1625	032-310	6
2	WASHER,THRUST,1 X .125 /TRD-1625	032-300	7
1	BEARING,THRUST, 1 /NTA-1625	032-190	8
2	NUT,JAM,HEX, 3/4-16	-	9
1	SPROCKET,35,25T,.75 /BS35-26 3/4	435-260	10



PROPRIETARY
 GBC PRO-TECH CLAIMS PROPRIETARY RIGHTS TO THE MATERIAL DISCLOSED ON THIS DRAWING. IT IS ISSUED IN CONFIDENCE FOR ENGINEERING INFORMATION ONLY AND SHALL NOT BE REPRODUCED, COPIED OR DISCLOSED IN WHOLE OR IN PART, OR USED FOR MANUFACTURE OR FOR ANY OTHER PURPOSE WITHOUT WRITTEN PERMISSION FROM GBC PRO-TECH

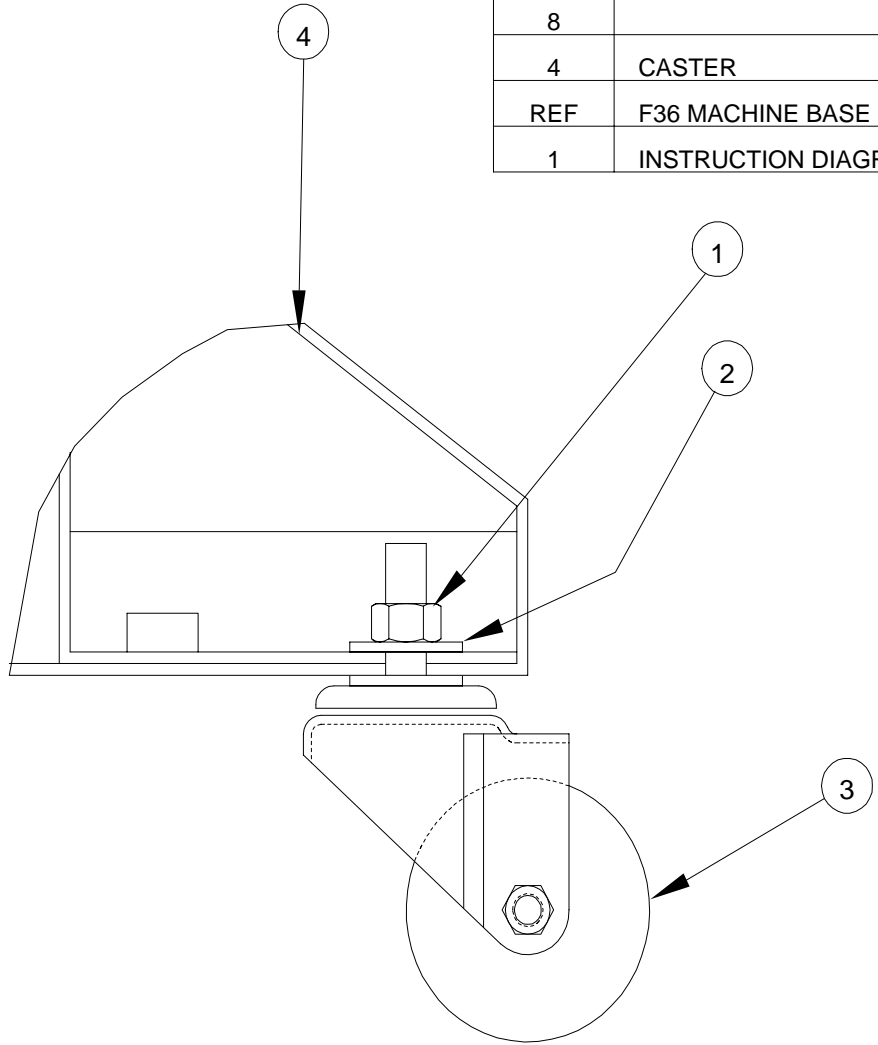
3110	2638	SHEET 1 OF 1			 4151 Anderson Road, DeForest, Wisconsin 53532 Phone (608) 246-8844 Fax (608) 246-8645				
		UNLESS OTHERWISE SPECIFIED TOLERANCE							
BJT	MS	1-13-97	DIM. AS SHOWN	TOL.	FINISH TO BE 125√	TITLE: ASSY, SPROCKET, FALCON			
5-14-98	MS		X.X	P 1/64		DATE: 10-17-96	DRAWN BY: MS	SCALE: 1/1	SIZE: A
B	A		X.XX	P .010	ANGLES P 1D	RELEASE NO.			
			X.XXX	P .005					



PROPRIETARY
 GBC PRO-TECH CLAIMS PROPRIETARY RIGHTS TO THE MATERIAL DISCLOSED ON THIS DRAWING. IT IS ISSUED IN CONFIDENCE FOR ENGINEERING INFORMATION ONLY AND SHALL NOT BE REPRODUCED, COPIED OR DISCLOSED IN WHOLE OR IN PART, OR USED FOR MANUFACTURE OR FOR ANY OTHER PURPOSE WITHOUT WRITTEN PERMISSION FROM GBC PRO-TECH

SHEET 1 OF 1		UNLESS OTHERWISE SPECIFIED TOLERANCE		FINISH TO BE	
DM	AS	TOL.			
XX		P.154			
X		P.050			
XX		P.050			
XXX		P.010			
XXXX		P.005			
TITLE		DATE	SCALE	SIZE	DWG
ASSY.LFTR.ROLL.MAIN FALCON 36		10-28-99	1/1	C	001-417
DRAWN BY: MRS		RELEASE			

REQ'D	DESCRIPTION	PART NO.	ITEM
4	1/2-13 HEX NUT #36510	-	1
8			2
4	CASTER	470-007	3
REF	F36 MACHINE BASE	-	4
1	INSTRUCTION DIAGRAM, CASTER MOUNT, F36	820-073	5



NOTES:
 1. ASSEMBLY PARTS LOOSELY SO THAT NUT CAPTURES WASHERS.
 2. BAG EACH CASTER ASSEMBLY SEPARATELY.
 3. MARK ASSEMBLY NUMBER ON EACH BAGGED CASTER.

SHEET 2101 OF 1		GBC PRO-TECH	
UNLESS OTHERWISE SPECIFIED TOLERANCE		4151 Anderson Road, DeForest, Wisconsin 53532 Phone (608) 246-8844 Fax (608) 246-8645	
DIM. AS SHOWN	TOL.	FINISH TO BE	TITLE:
XX	F 1/64	125/√	ASSY, LARGE CASTERS, F36 BPICS9300079
X.	F .050		
X.X	F .020	ANGLES P 1 D	DATE: 7/1/88
X.XX	F .010	RELEASE NO	2101
X.XXX	F .005	DRAWN BY:	AJH
		SCALE:	1:1
		SIZE:	C
		Dwg:	001-526