

GBC Shredmaster
950S Straight-Cut Shredder
955X Cross-Cut Shredder

Instruction Manual

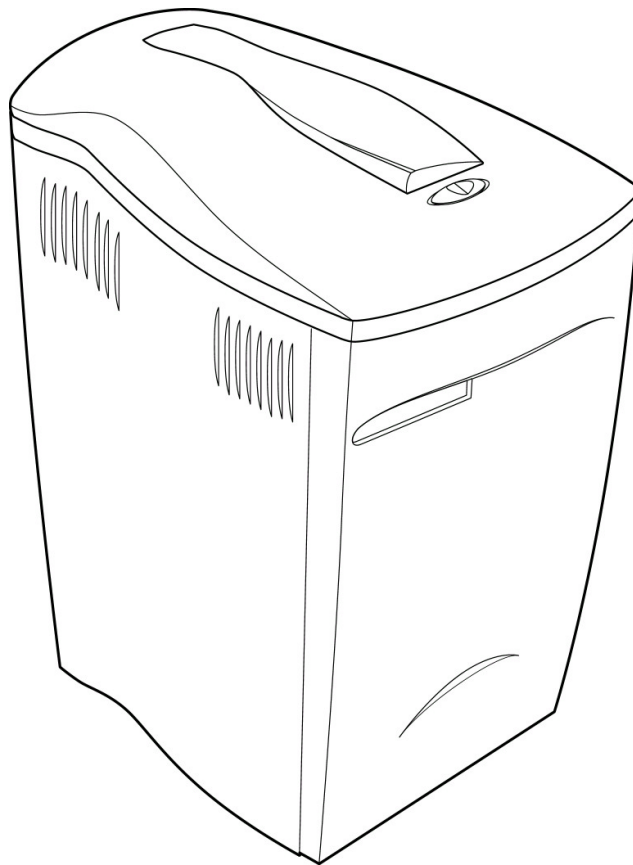


Provided by
MyBinding.com
When Image Matters.

Call Us at 1-800-944-4573



950S Straight-Cut Shredder
955X Cross-Cut Shredder



© 2001 All Rights Reserved

No part of this publication
may be reproduced in any
form without expressed
written permission from

GBC Office Products Group

Designed and Electronically
Printed in the USA.

1.0 Specifications

5

2.0 Wiring Diagram

6

3.0 Parts List

7-13

4.0 Recommended Parts

14

IMPORTANT SAFETY INSTRUCTIONS

Your safety as well as the safety of others is important to GBC. In this instruction manual and on the product are important safety messages. Read these messages carefully.



The safety alert symbol precedes each safety message in this instruction manual and on the product. This symbol indicates a potential personal safety hazard that could hurt you or others, as well as cause product or property damage. Do not connect this unit to electrical power or attempt to operate it before you have read these operating instructions. Save these instructions for later use.

The following warnings are found on the product:



This safety message means that you could be seriously hurt or killed if you open the product and expose yourself to hazardous voltage.

The following ISO and IEC symbols appear on this product, and their meanings are as follows:



On/Auto



Forward

Reverse



This safety message means that you could be seriously hurt if you place your hands in the discharge area.

The following symbols refer to the illuminated indicator:



Means the shred bin is full.



Means the cabinet door is open.



This means you should be careful because long hair can become entangled in the cutting head. This could hurt you.



This means don't reach into the feed opening of the cutting head. This could hurt you.



This means be careful of ties and other loose clothing which could become entangled in the cutting head. This could hurt you.



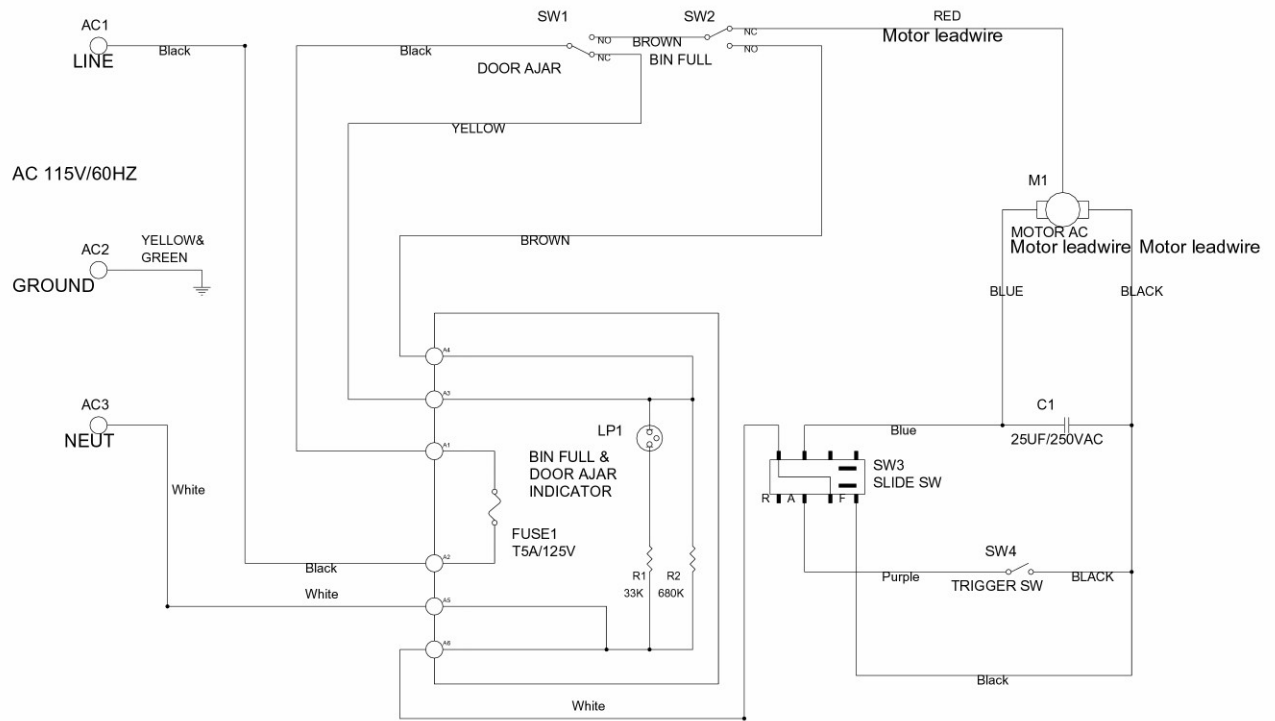
This means you should be careful of loose jewelry which could become entangled in the cutting head. This could hurt you.

ELECTRICAL SAFEGUARDS

- Unplug your shredder before moving it, emptying the shred bag, or when it is not in use for an extended period of time.
- Do not operate with a damaged power supply cord or plug, after it malfunctions, or after it has been damaged in any manner.
- Do not overload electrical outlets beyond capacity as this can result in fire or electrical shock.
- The socket-outlet should be installed near the equipment and shall be easily accessible.
- Do not alter the attachment plug. The plug is configured for the appropriate electrical supply.
- Do not use near water.
- Keep out of reach of children.
- Do NOT use aerosol dusters or cleaners.
- Do NOT spray anything into the shredder.



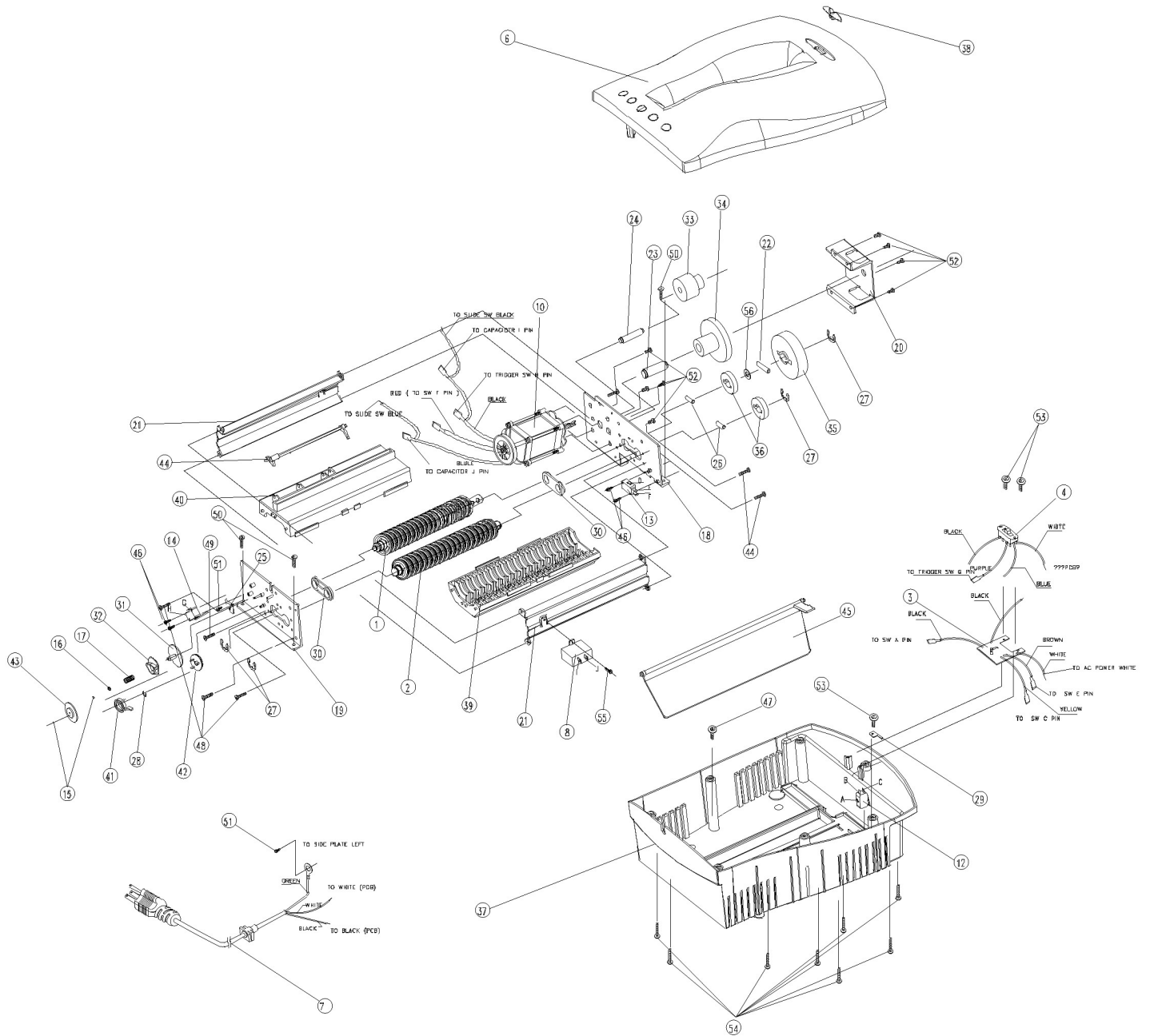
Model	<u>950S</u>	<u>955X</u>
Throat Width	9-1/4"	9-1/4"
Shred Size	1/4"	5/32" x 2-1/8"
Sheet Capacity	12-13	8-9
Speed	15 FPM	15 FPM
Amperage	2.3A	3.4A
Duty Cycle	5 min. ON/30 min. OFF	5 min. ON/30 min. OFF
Shredder Head Weight	17.71 lbs.	21.23 lbs.
Total Unit Weight	27.61 lbs.	31.13 lbs.
Volts/Hz	115V/60Hz	115V/60Hz
Noise Level	70 dB	70 dB



950S/955X 115VAC 60Hz Wiring Schematic

950S

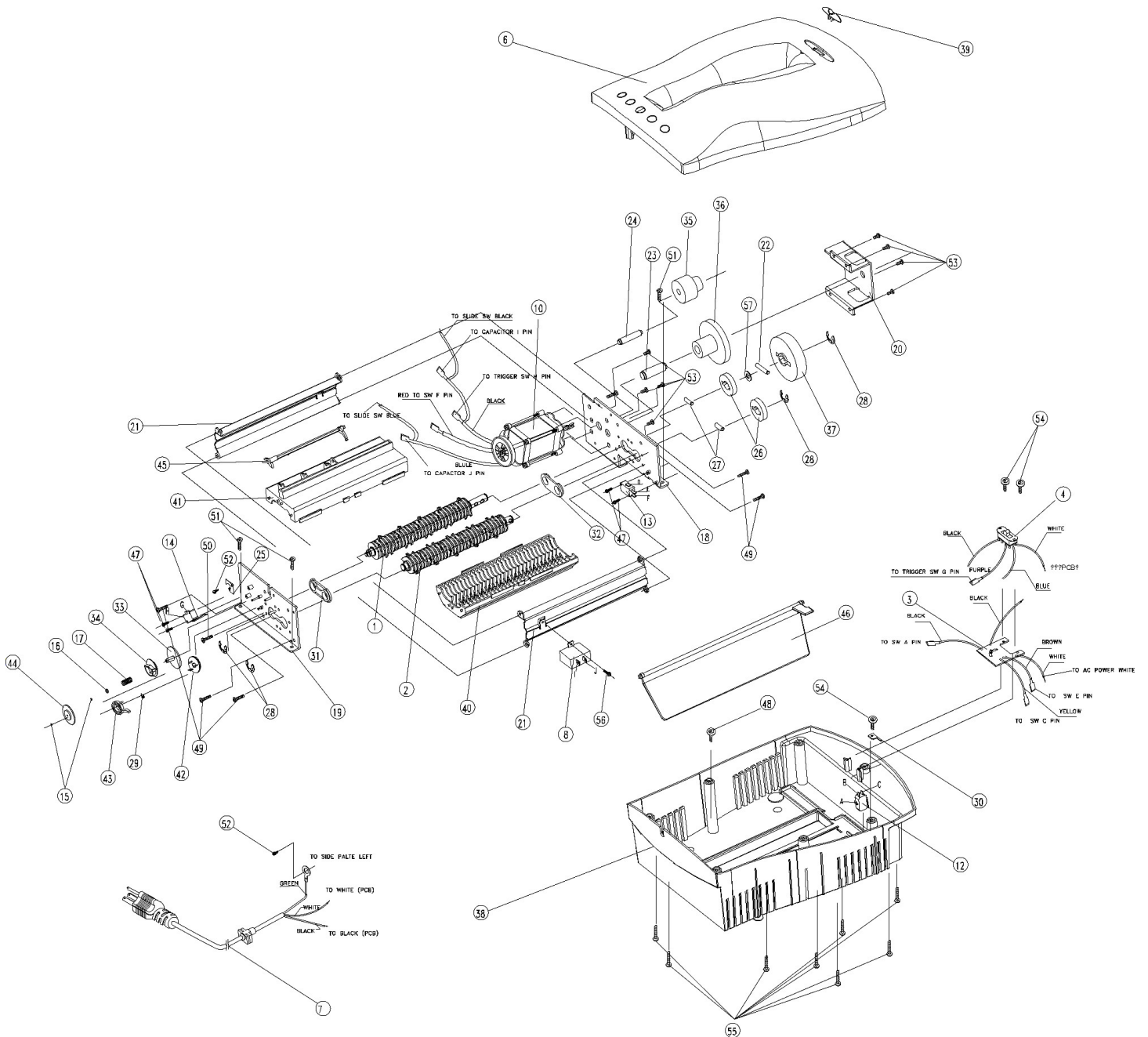
PARTS LIST



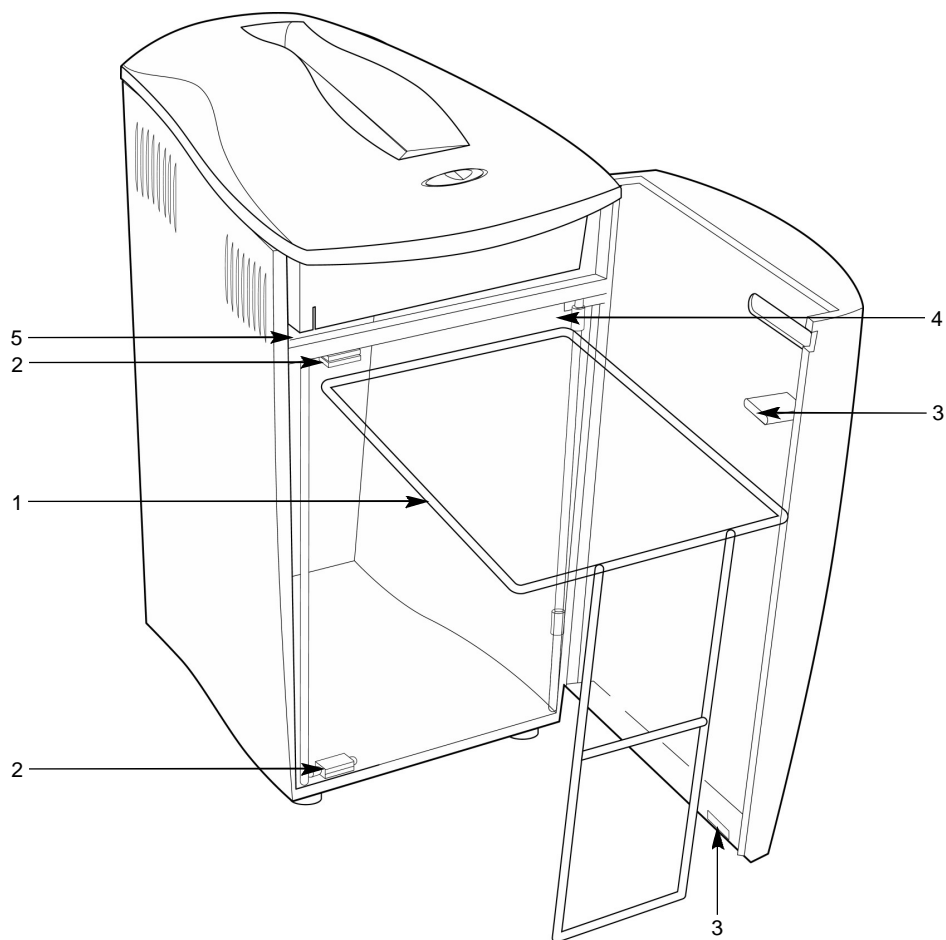
56	XF2700000A	n/a	SPACER #22*16*0.5	1	
55	S1W4F0000E	n/a	SCREW M4*10 P GEAR WASHER	1	
54	S1VKF00000	n/a	SCREW #5*16 B TAPPING SCREW	8	
53	S1VJN0000F	n/a	SCREW #3*12 WASHER TAPPING	3	
52	S1VFF0000E	n/a	SCREW M5*10 B GEAR WASHER	8	
51	S1V7F0000E	n/a	SCREW M4*6 ETO & GEAR WASHER	2	
50	S1M2F00000	n/a	M5*10 B TAPPING SCREW	3	
49	S1LVN00000	n/a	SCREW M5X12	1	
48	S1LHF0000S	n/a	SCREW M5*18+SP	7	
47	S1DJN0000F	n/a	WITH WASHER	1	
46	S1CFN00000	n/a	SCREW M3X14	4	
45	PV300A10FA	1756960	FLAP	1	
44	PV290B20FC	1756961	AUTO PART	1	
43	PH820H0XX0	1756962	AUTO GEAR 32T	1	
42	PH810H0XXA	1756963	REV CAM	1	
41	PH800H0XXA	1756964	CAM	1	
40	PCP30A00FA	1756965	PAPER GUIDE B	1	
39	PCP20A00FA	1756966	PAPER GUIDE A	1	
38	PCNY0A02SA	1756967	BUTTON	1	
37	PCNV0A10FA	1756968	BOTTOM COVER	1	
36	PGG80D3XXA	1756969	GEAR D	2	
35	PGG70D3XXB	1756970	GEAR C	1	
34	PGG60H0XXA	1756971	GEAR B	1	
33	PGG50H0XXA	1756972	GEAR A	1	
32	PAI50H0XXA	1756973	DELAY GEAR-B	1	
31	PAI40H0XXA	1756974	DELAY GEAR-A	1	
30	MP2800000A	1756975	BUSHING	2	
29	MN2800000A	1755732	SWITCH FIXER	1	
28	MC47000000	n/a	#5 E-RING	1	
27	MC46000000	n/a	#12 E-RING	4	
26	MC34000000	1756976	KNIFE SHAFT PIN	2	
25	MASK00000A	1756977	TRIGGER HOLDER	1	
24	MART00000A	1756978	GEAR PIN B	1	
23	MARS00000A	1756979	GEAR PIN A	1	
22	MARP00000B	1756980	SHAFT PIN #7*42.1	1	
21	MARD00000A	1756981	SUPPORT PLATE	2	
20	MARC00000A	1756982	IDLE BRACKET	1	
19	MARB00000A	1756983	SIDE PLATE B (LEFT)	1	
18	MARA00000A	1756984	SIDE PLATE A (RIGHT)	1	
17	MA89000000	n/a	#6 SPRING	1	
16	MA86000000	n/a	#4 "CS"	1	
15	MA84000000	n/a	#1.5 E-RING	2	
14	ESWC03000A	1750294	TRIGGER SW	1	
13	ESWC02280A	1751930	MICRO SW	1	
12	ESWC02270A	6202038	MICRO SW	1	
10	EMTR02690A	1756985	950S AC MOTOR 115V	1	
8	ECAP603000	1756986	CAPACITOR	1	
7	EACC03811A	1756987	AC POWER CORD	1	
6	ASYP13442A	1756988	950S TOP COVER ASS'Y	1	
4	ESWC03250A	1756989	SLIDE SWITCH	1	
3	ASYM13236A	1756990	LED & FUSE PCB ASS'Y	1	
2	ASYM13226A	1756991	950S 6MM KNIFE SHAFT B ASS'Y	1	
1	ASYM13225A	1756992	950S 6MM KNIFE SHAFT A ASS'Y	1	
Item	Reference	GBC P/N	Description	115V	230V

955X

PARTS LIST



57	XF2700000A	n/a	SPACER #22*16*0.5	1	
56	S1W4F0000E	n/a	SCREW M4*10 P GEAR WASHER	1	
55	S1VKF00000	n/a	SCREW #5*16 B TAPPING SCREW	8	
54	S1VJN0000F	n/a	SCREW #3*12 WASHER TAPPING	3	
53	S1VFF0000E	n/a	SCREW M5*10 GEAR WASHER	8	
52	S1V7F0000E	n/a	SCREW M4*6 ETO & GEAR WASHER	2	
51	S1M2F00000	n/a	M5*10 B TAPPING SCREW	3	
50	S1LVN00000	n/a	SCREW M5X12	1	
49	S1LHF0000S	n/a	SCREW M5*18+SP	7	
48	S1DJN0000F	n/a	WITH WASHER	1	
47	S1CFN00000	n/a	SCREW M3 X 14	4	
46	PV300A10FA	1756960	FLAP	1	
45	PV290B20FC	1756961	AUTO PART	1	
44	PH820H0XX0	1756962	AUTO GEAR 32T	1	
43	PH810H0XXA	1756963	REV CAM	1	
42	PH800H0XXA	1756964	CAM	1	
41	PCP10A00FA	1756993	PAPER GUIDE B	1	
40	PCP00A00FA	1756994	PAPER GUIDE A	1	
39	PCNY0A02SA	1756967	BUTTON	1	
38	PCNV0A10FA	1756968	BOTTOM COVER	1	
37	PGG70D3XXB	1756970	GEAR C	1	
36	PGG60H0XXA	1756971	GEAR B	1	
35	PGG50H0XXA	1756972	GEAR A	1	
34	PAI50H0XXA	1756973	DELAY GEAR-B	1	
33	PAI40H0XXA	1756974	DELAY GEAR-A	1	
32	MX9300000A	1756995	SHAFT BUSHING	1	
31	MP2800000A	1756975	BUSHING	1	
30	MN2800000A	1755732	SWITCH FIXER	1	
29	MC47000000	n/a	#5 E-RING	1	
28	MC46000000	n/a	#12 E-RING	4	
27	MC34000000	1756976	KNIFE SHAFT PIN	2	
26	MC07000000	1756996	SPUR GEAR - A 20T	2	
25	MASK00000A	1756977	TRIGGER HOLDER	1	
24	MART00000A	1756978	GEAR PIN B	1	
23	MARS00000A	1756979	GEAR PIN A	1	
22	MARP00000B	1756980	SHAFT PIN #7*42.1	1	
21	MARD00000A	1756981	SUPPORT PLATE	2	
20	MARC00000A	1756982	IDLE BRACKET	1	
19	MARB00000A	1756983	SIDE PLATE B(LEFT)	1	
18	MARA00000A	1756984	SIDE PLATE A(RIGHT)	1	
17	MA89000000	n/a	#6 SPRING	1	
16	MA86000000	n/a	#4 "CS"	1	
15	MA84000000	n/a	#1.5 E-RING	2	
14	ESWC03000A	1750294	TRIGGER SW	1	
13	ESWC02280A	1751930	MICRO SW	1	
12	ESWC02270A	6202038	MICRO SW	1	
10	EMTR02700A	1756997	955X AC MOTOR 115V	1	
8	ECAP603000	1756986	CAPACITOR	1	
7	EACC03811A	1756987	AC POWER CORD	1	
6	ASYP13463A	1756998	955X TOP COVER ASS'Y	1	
4	ESWC03250A	1756989	SLIDE SWITCH	1	
3	ASYM13236A	1756990	LED & FUSE PCB ASS'Y	1	
2	ASYM13228A	1756958	955X KNIFE SHAFT B ASS'Y	1	
1	ASYM13227A	1756959	955X KNIFE SHAFT A ASS'Y	1	
Item	Reference	GBC P/N	Description	115V	230V



5	XK8300000A	n/a	Insulator Pad	4	4
4	PCNZ0J00FA	n/a	Shelf	2	2
3	MM1000000A	1751944	Magnet Plate	2	2
2	XF1500000A	1751943	Magnet Body	2	2
1	MARJ00000A	1756957	Bag Rim	1	1
Item	Reference	GBC P/N	Description	115V	230V

950S

PV300A10FA	1756960	FLAP	1	
PV290B20FC	1756961	AUTO PART	1	
PCP30A00FA	1756965	PAPER GUIDE B	1	
PCP20A00FA	1756966	PAPER GUIDE A	1	
PGG80D3XXA	1756969	GEAR D	2	
PGG70D3XXB	1756970	GEAR C	1	
PGG60H0XXA	1756971	GEAR B	1	
PGG50H0XXA	1756972	GEAR A	1	
MP2800000A	1756975	BUSHING	2	
MN2800000A	1755732	SWITCH FIXER	1	
EMTR02690A	1756985	950S AC MOTOR 115V	1	
ECAP603000	1756986	CAPACITOR	1	
ESWC03250A	1756989	SLIDE SWITCH	1	
ASYM13236A	1756990	LED & FUSE PCB ASS'Y	1	
ASYM13226A	1756991	950S 6MM KNIFE SHAFT B ASS'Y	1	
ASYM13225A	1756992	950S 6MM KNIFE SHAFT A ASS'Y	1	
Reference	GBC P/N	Description	115V	230V

950X

PV300A10FA	1756960	FLAP	1	
PV290B20FC	1756961	AUTO PART	1	
PCP10A00FA	1756993	PAPER GUIDE B	1	
PCP00A00FA	1756994	PAPER GUIDE A	1	
PGG70D3XXB	1756970	GEAR C	1	
PGG60H0XXA	1756971	GEAR B	1	
PGG50H0XXA	1756972	GEAR A	1	
MX9300000A	1756995	SHAFT BUSHING	1	
MP2800000A	1756975	BUSHING	1	
MN2800000A	1755732	SWITCH FIXER	1	
MC07000000	1756996	SPUR GEAR - A 20T	2	
ESWC02270A	6202038	MICRO SW	1	
EMTR02700A	1756997	955X AC MOTOR 115V	1	
ESWC03250A	1756989	SLIDE SWITCH	1	
ASYM13236A	1756990	LED & FUSE PCB ASS'Y	1	
ASYM13228A	1756958	955X KNIFE SHAFT B ASS'Y	1	
ASYM13227A	1756959	955X KNIFE SHAFT A ASS'Y	1	
Reference	GBC P/N	Description	115V	230V

Assembly# 950S 1759650 "115V"
955X 1756955 "115V"