

Standard Horizon JogFast Paper Jogger

Instruction Manual



Provided by

MyBinding.com
When Image Matters.

Call Us at 1-800-944-4573

OPERATOR'S MANUAL

Standard Jog-Fast™ Jogger



Read this manual, and thoroughly familiarize yourself with its contents before operating or servicing this equipment.

INTRODUCTION:

Thank you for selecting the Standard Jog-Fast™ Jogger. The Standard Jog-Fast™ Jogger has been developed for ease of operation and maintenance, however, we recommend that you familiarize yourself with the machine by carefully reading these instructions.

WARNING: THIS MACHINE CONTAINS MOVING PARTS THAT CAN CATCH HAIR OR LOOSE CLOTHING AND PINCH FINGERS. DURING OPERATION AND MAINTENANCE KEEP HANDS, HAIR AND LOOSE CLOTHING CLEAR OF MOVING PARTS. SERVICE OR DISASSEMBLY SHOULD BE DONE WITH POWER CORD DISCONNECTED.

INSTALLATION:

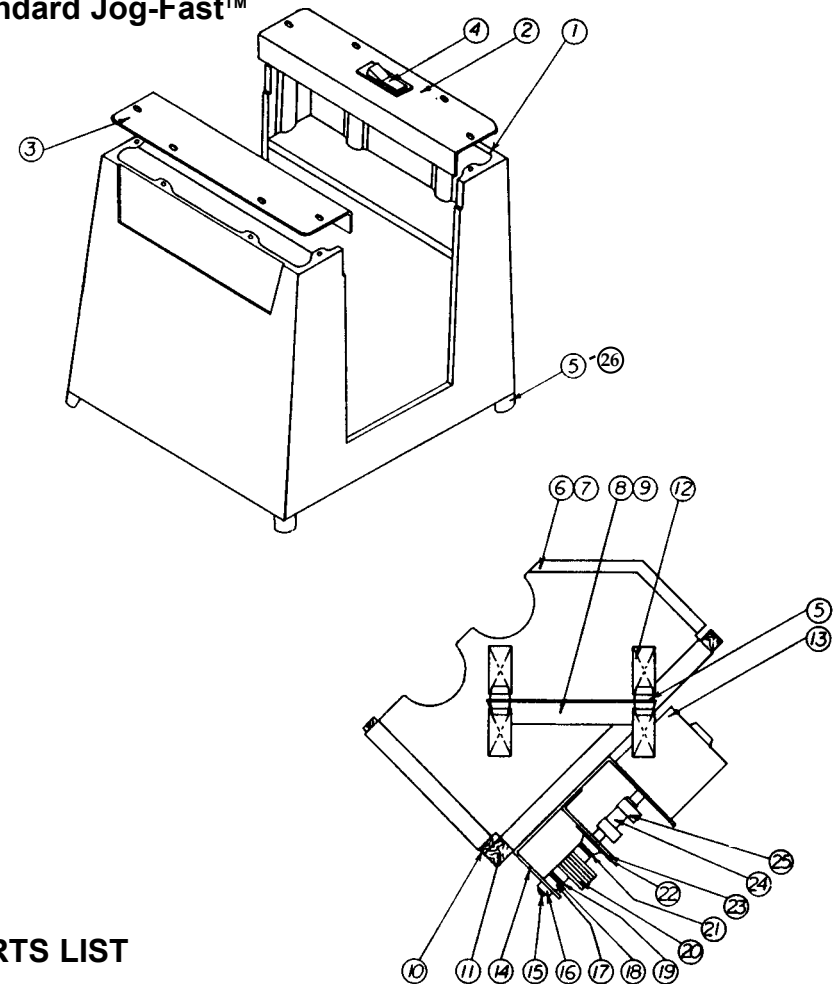
Remove Jog-Fast™ Jogger from carton. Remove 2 bolts at bottom which secure packing material to jogger.

Plug unit into any 115V 60HZ/A.C. outlet. Turn Switch "ON". (a light will indicate "ON" position.) Load paper.

MAINTENANCE:

Lubricate bearings with light oil every 6 months. Occasionally, if necessary, remove any debris from bearings with a brush or an air jet stream. See parts list for bearing locations.

Standard Jog-Fast™



PARTS LIST

KEY DESCRIPTION	PART NO.	QUAN.	KEY DESCRIPTION	PART NO.	QUAN.
1. Base	W-0400001	1	14. Motor Base	W-0400014	1
2. Top Cover-R.H.	W-0400002	1	15. Counter Shaft	W-0400005	1
3. Top Cover-L.H.	W-0400003	1	16. Bearing-Flange	M-S013010	1
4. Switch	M-S033051	1	17. Set Collar	M-S037302	2
5. Bumpers	M-S030045	12	18. Washer-Nylon	M-S019024	2
6. Side Panel-R.H.	W-0400008	1	19. Thrust Washer	M-S008088	1
7. Side Panel-L.H.	W-0400009	1	20. Counterweights	W-0400004	6
8. Side Bckt.-R.H.	W-0400010	1	21. Spring Washer	M-S008086	1
9. Side Bckt.-L.H.	W-0400011	1	22. Bearing	M-S013047	1
10. Wood Tray-Bottom	W-0400006	1	23. Motor Base Bckt.	W-0400013	1
11. Wood Tray-Back	W-0400007	1	24. Motor Coupling	W-0400012	1
12. Springs	M-S031074	8	25. Clamps	M-S037314	2
13. Motor	M-S021030	1	26. Suction Cups	M-S030048	4