

***SealerSales CN-4520A  
Heat Shrink Tunnel  
(18"W x 8"H x 32"L)***

Instruction Manual



*Provided by*

**MyBinding.com**  
*When Image Matters.*

Call Us at 1-800-944-4573

# SHRINK TUNNEL

OPERATING INSTRUCTIONS

MODEL

CN-4015

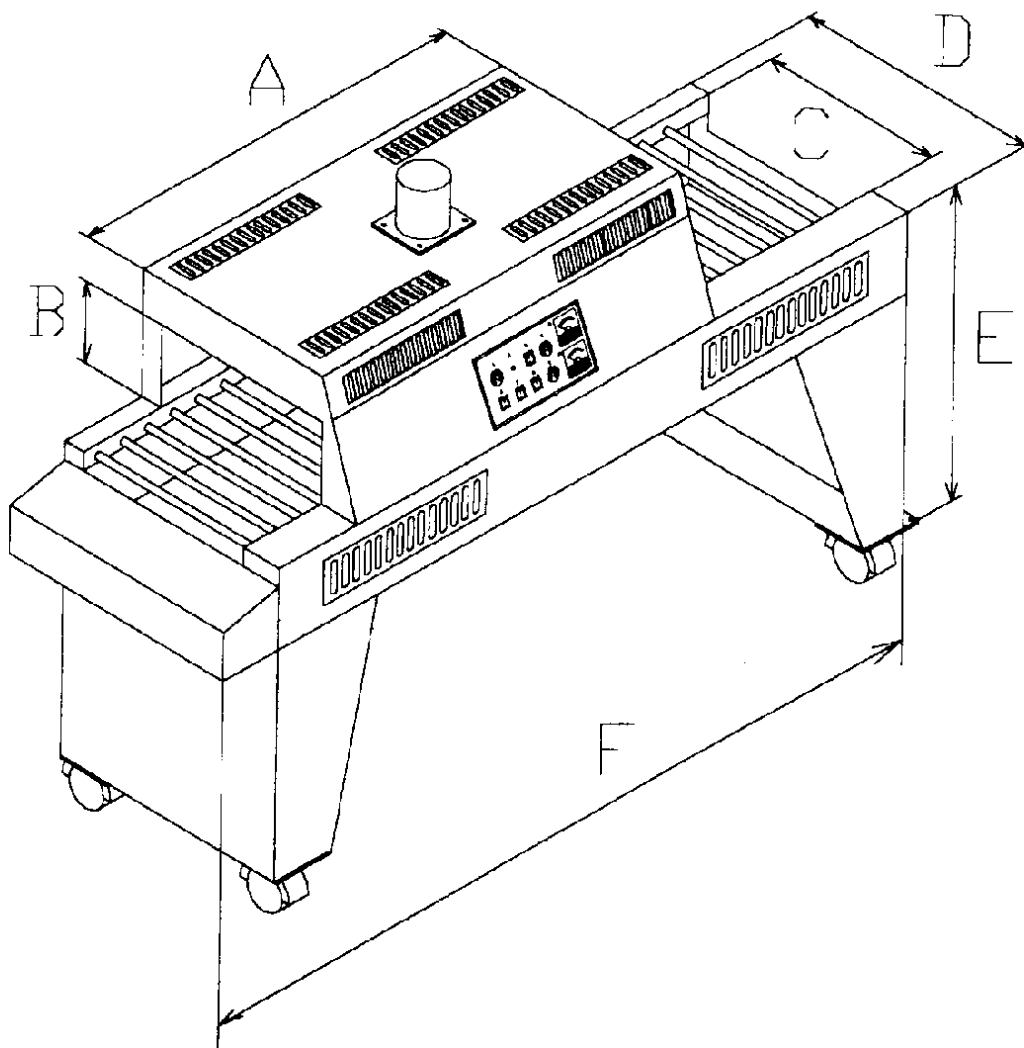
**CN-4520**

CN-4520AL



## SPECIFICATIONS

Model	CN-4015	CN-4520	CN-4520AL
Power	220V / 240V	220V / 240V	220V / 240V
Weight (lbs)	5kw	6kw	8kw
Machine Size			
A	27.6in	31.5in	39.4in
B	6.3in	8.3in	8.3in
C	17.7in	19.7in	19.7in
D	23.6in	27.6in	27.6in
Width	13.8in	15.7in	15.7in
Height	5.9in	7.9in	7.9in

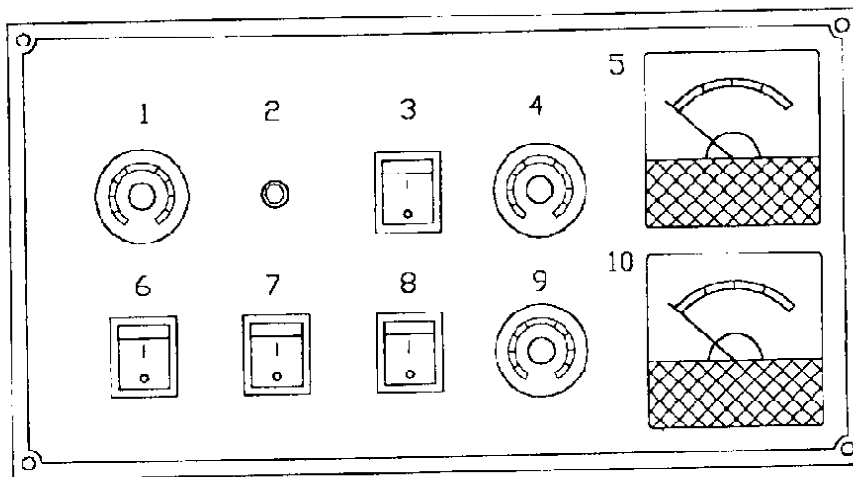


## VOLTAGE – CONTROL IMPORTANT NOTES

1. When shrink wrapping is carried out, but the film is not uniform or not complete, please modify by increasing the shrinking temperature or decreasing the speed of the conveyor.
2. If the film tears or blows during shrink wrapping, please modify by decreasing the shrinking temperature or increasing the speed of the conveyor.

When machine operation is complete, please turn off the following switches in order

1. Turn the “**Temperature Adjustment**” back to 0.
2. Turn off the “**Temperature Switch**” and keep operating the conveyor for at least 10 minutes to allow the shrink tunnel to cool
3. Turn the “**Conveyor Adjustment**” back to 0.
4. Switch off the “**Conveyor Start.**”
5. Turn off the “**Source Switch.**”



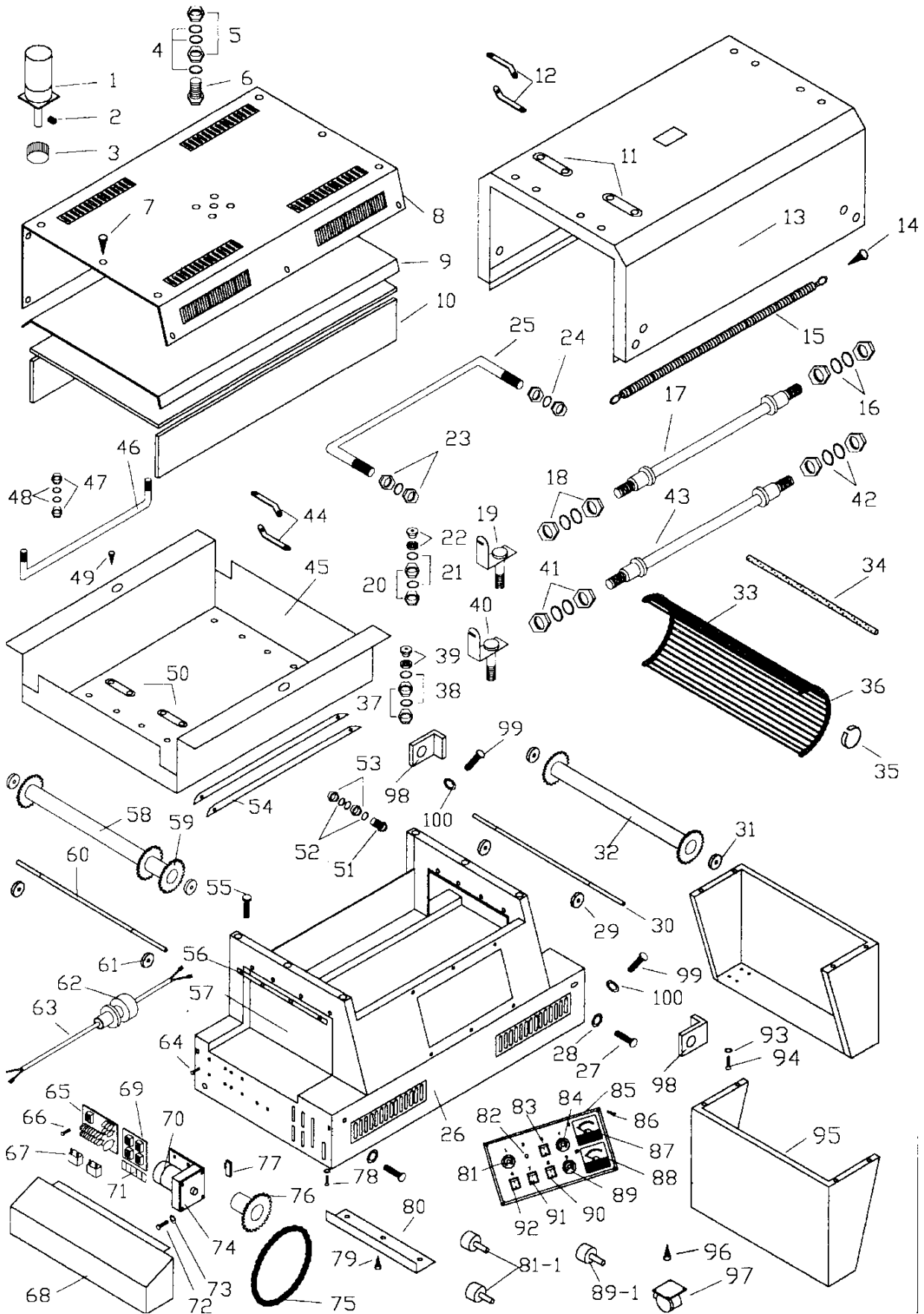
### ***Volt-Control Type***

- |                                    |  |
|------------------------------------|--|
| 1) Conveyor potentiometer knob     | : The lamp is lit while operating.               |
| 2) Power lamp                      | : To adjust the speed of the conveyor.           |
| 3) Upper heater switch             | : To switch on or off the upper heaters.         |
| 4) Upper heater potentiometer knob | : To adjust the volt supply of upper heaters.    |
| 5) Volt meter                      | : The indicator of volt supply of upper heaters. |
| 6) Conveyor and fan switch         | : To switch on or off the conveyor and fan.      |
| 7) Tow sides heater switch         | : To switch on or off 2 sides heaters.           |
| 8) Lower heater switch             | : To switch on or off lower heaters.             |
| 9) Lower heater potentiometer knob | : To adjust the volt supply of lower heaters.    |
| 10) Volt meter                     | : The indicator of volt supply of lower heaters. |

# SPARE PARTS LIST

No	Description	No	Description	No	Description
1	Fan Motor	35	E-Type Ring, 184 pcs/tunnel	70	Transmission Motor
2	Socket Heat Set Screw	36	Transmission Chain,4*2LSA-1,184L*36, 2 pcs/tunnel	71	PC Board Bracket
3	Fan	37	Hexagon Nut	74	Motor Bracket
4	Washer	38	Washer	72	Hexagon Head Bolt
5	Hexagon Nut	39	Ceramic Busing Insulation	73	Washer
6	Bolt Hexagon Head Screw	40	L-Type Bracket for Heater Tube	75	Transmission Chain35RX*44L
7	Tapping Screw	41	Hexagon Nut	76	Transmission Gear
8	Body Cover	42	Washer	77	Socket Heat Set Screw
9	Glass Fiber	43	Heater Tube (17)	78	Tapping Screw
10	Heat Insulating Panel	44	Connecting Brass Strip	79	Tapping Screw
11	I-Type Connecting Brass	45	Stainless Steel Under Tunnel	80	Cover Protecting Hood
12	Connecting Brass	46	U-Type Guard Rail	81	Knob/ Convey or Potentionmeter
13	Upper Stainless Steel Tunnel	46a	L-Type Guard Rail	81-1	Convey or Rate Variable Resistance
14	Tapping Screw	47	Hexagon Nut	102	Knob/ Heater Potentiometer
15	Heat Resistance	48	Washer	82	Power Lamp
16	Washer	49	Tapping Screw	83	Switch/ Upper Heater
17	Heater Tube	50	I-Type Connecting Brass Strip	84	Knob/Upper Potentiometer
17a	Ceramic in Heat Tube	51	Hexagon Head Bolt	84-1	Upper Heater Variable Resistance
18	Hexagon Nut	52	Washer	85	Control Panel
19	Heater tube L-Type Bracket	53	Hexagon Nut	86	Tapping Screw
20	Hexagon Nut	54	Track	87	Volt Meter/Upper Heater
21	Washer	55	Tapping Screw (66)	88	Volt Meter/Low er Heater
22	Ceramic Insulating Bushing	56	Teflon Pressing Strip	88a	Volt Meter Cover
23	Hexagon Nut	57	Teflon	89	Knob/ Lower Potentiometer
24	Washer	58	Transmission Gear Shaft	89-1	Lower Heater Variable Resistance
25	U-Type Guard Rail	59	Ball Bearing (same as #31)	90	Switch/4 P, Lower Heater
26	Machine Body	60	Central Shaft ( same as #30)	91	Sw itch/ Two Sides Heater, 4P
27	Hexagon Head Bolt	61	C-Type Ring (same as #29)	92	Convey or & Fan Switch
28	Washer	62	Cable Glands,Bushing	93	Washer
29	C-type Ring	63	Power Line	94	Hexagon Head Bolt
30	Central Shaft, includes C-Type Ring		Thermocouples	95	Supporting Leg
30a	Complete Set, Central Shaft w/Teflon	64	Locking Circuit Board Support	96	Tapping Screw
31	Ball Bearing	101	Magnetic Connector	97	Caster
32	Transmission Gear	66	Tapping Screw	98	Adjustable Clip
33	Bar ,Convey or Roller, 92 pcs/tunnel	67	Condenser	99	Screw
33a	Convey or Roller, 80pcs/set	68	Small Cover	100	Washer
34	Silicon Glass Fiber Tube, 92 pcs/tunnel	65	PC Board/Heater, JC-2F098	101	Complete Convey or 2(#36),92(#34),184(#35),92(#33)
33+34	Convey or Roller w/sleeve	69	PC Board/Motor/Convey or	102	Net Type Convey or Belt

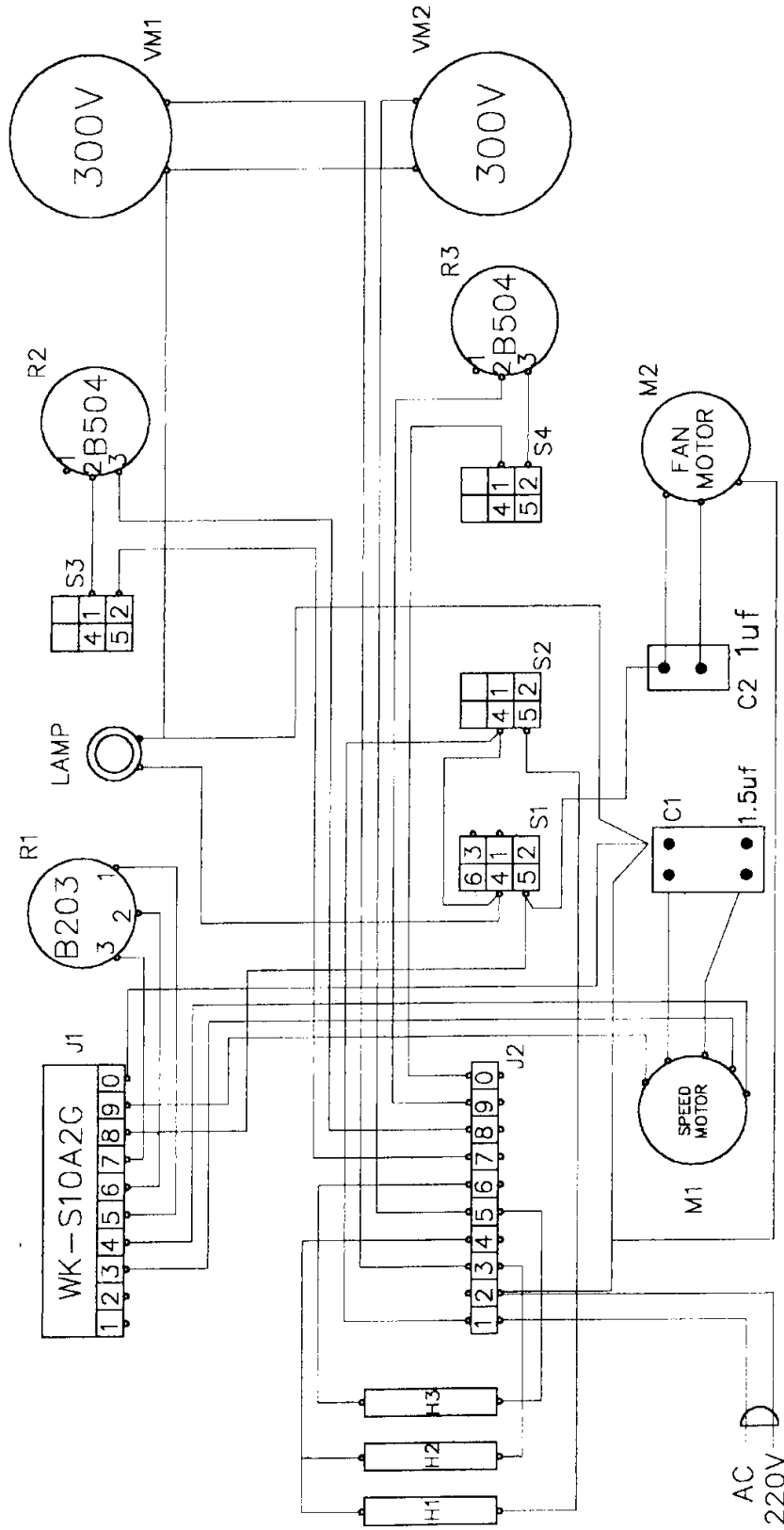
# SPARE PARTS DIAGRAM



# CONNECTION DIAGRAM

## ELECTRIC SCHEME

<Volt-Control Type>



- P.S.1: S1: CONVEYOR SWITCH
- S2: 2 SIDES HEATER SWITCH
- S3: UPPER HEATER SWITCH
- S4: LOWER HEATER SWITCH
- 2.R1: CONVEYOR POTENTIOMETER KNOB
- R2: UPPER POTENTIOMETER KNOB
- R3: LOWER POTENTIOMETER KNOB
- H1: SIDE HEATER
- UPPER TUNNEL HEATER
- H2: LOWER HEATER
- VH1: UPPER TUNNEL VOLT METER
- VH2: LOWER TUNNEL VOLT METER
- M1: SPEED MOTOR
- M2: FAN MOTOR
- C1: 1.5uf
- C2: 1uf
- J1: SPEED PC
- J2: THERMO PC
- M1: MOTOR OF CONVEYOR
- M2: MOTOR OF FAN