

Formax ColorMax8 High-Speed Digital Color Printer

Product Spec Sheet



Provided by
MyBinding.com
When Image Matters.

Call Us at 1-800-944-4573

FORMAX[®]

ColorMax8 HIGH-SPEED DIGITAL COLOR PRINTER



MyBinding.com
5500 NE Moore Court
Hillsboro, OR 97124
Toll Free: 1-800-944-4573
Local: 503-640-5920



powered by
memjet

The ColorMax8 Digital Color Printer combines the latest in inkjet technology with the capacity to produce full-bleed, full-color mailing and packaging solutions. In addition to envelope printing and addressing, the wider, flatter paper path allows users to print on stuffed envelopes, 10" x 13" flats, chipboard, corrugated cardboard, cartons, padded envelopes and more, up to 3/8" thick. All of this is achieved with class-leading low cost per piece and total cost of ownership.

An intuitive 7" color touchscreen provides greater control over the entire print process, displaying image preview, system status and offering access to common functions and settings. Plus, the stored jobs feature holds up to 60 GB of print jobs which can be easily recalled. The enhanced top-loading media feeder has a capacity of up to 575 #10 envelopes, and can feed materials up to 10.5" x 17".

The ColorMax8's Memjet[®] print head has 70,400 ink nozzles and no moving parts, which offers higher speeds, lower ink and maintenance costs and less noise. The ColorMax8 produces full-color CMYK output, up to 16.8 million colors, on a variety of paper stocks and sizes, with full-bleed capability on media up to 8.5" wide. It can print 1600 x 1600 dpi at 6 inches per second, and 1600 x 800 dpi at 12 inches per second.

With its thermal inkjet technology, it doesn't require heat or contact to create an image, so it can safely be used with pre-printed envelopes and windowed envelopes without damaging the window or marring the original image. High-capacity ink tanks and fully-automated print head cleaning ensure optimum print quality throughout print runs. The ColorMax8 also features front access to the ink tanks for quick and easy tank changes.

Optional cmColor RIP Software provides a range of tools to automate production, manage jobs and deliver professional quality color control.

The ColorMax8 joins the ColorMax Digital Printer line and brings a whole new level of colorful capabilities.

Operating Features

7" Color Touchscreen: Intuitive control panel interface with image preview, system status, and access to common functions and settings

Fast Processing: Prints up to 8,000 #10 envelopes per hour

Addressing and Variable Data: Letterhead, invitations, window/non-window envelopes, invoices, postage, barcodes and more

Accommodates Media Up to 3/8" Thick: Wide, flat paper path handles stuffed envelopes, 10x13 flats, chipboard, corrugated cardboard, cartons, padded envelopes, pharmaceutical pill packs, and more

Electronic Thickness Control: Set the paper path thickness via the touchscreen control panel

Top-Loading Feed System: Holds up to 575 #10 envelopes, and media up to 10.5" x 17"

Stored Jobs: Holds up to 60 GB of print jobs, ready to be recalled at any time

Accurate Feeding: Pressure roller transport system with star rollers



Intuitive 7" color touchscreen displays system status, image preview, and provides access to stored jobs

Printing Features

Full-Color High-Resolution Printing: CMYK output, up to 1600 x 1600 dpi

Full-Bleed: Up to 8.5" wide

High-Capacity Ink Tanks: Cyan 250ml, Magenta 250ml, Yellow 250ml, Black 500ml

Easy Ink Access: Clamshell design provides easy front access to ink tanks

Up to 16.8 Million Colors

Fixed Print Head: Single 8.77" bar spans the width of the printing surface



Memjet® print head has 70,400 ink nozzles for higher speeds, lower ink use and less noise than standard print heads

Technical Features

Automated Print Head Maintenance: Cleaning and capping station automatically maintains print quality

TruType or Postscript System Fonts

USB and Ethernet PC Interface

Electronic Firmware Updates via PC Connection

Memjet™ Technology: Innovative print head has no moving parts, features 70,400 color ink nozzles for higher speeds, lower ink costs and less noise than standard print heads



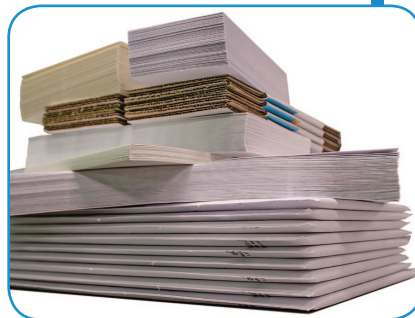
Clamshell design offers easy front access to ink tanks and paper path

Options

Output Conveyor Stacker: Keeps printed materials neat for further processing

Infrared Dryer: Helps to quickly set ink on glossy stock

cmColor RIP & Color Match Software: Provides a range of color management tools



Wide, flat paper path allows for printing on stuffed envelopes, 10x13 flats, chipboard, cartons, padded envelopes and more

Specifications

Print Quality:	Up to 1600 x 1600 dpi @ 6 inches per second, up to 1600 x 800 dpi @ 12 ips	
Speed:	Up to 3,600 per hour 11" sheet Up to 8,000 per hour # 10 envelope (landscape)	
Duty Cycle:	Up to 400,000 prints per month	
Material Size:	Min: 3" W x 4" L Max: 10.5" W x 17" L	
Material Thickness:	Up to 3/8" (10 mm)	
Print Area:	Up to 8.77" x 40" with full bleed capability under 8.6"	
Ink Tank Capacity:	Cyan 250ml, Magenta 250ml, Yellow 250ml, Black 500ml	
Color Matrix:	Up to 16.8 million colors	
Job Storage:	Up to 60 GB of saved jobs	
Hardware Required:	Windows-based PC, XP and newer	
PC Interface:	USB & Ethernet	
Firmware Update:	Electronic firmware update downloads via PC connection	
Fonts:	All available TruType or Postscript system fonts	
Dimensions:	34" L x 22" W x 21" H With conveyor stacker: 81" L x 20" W x 18" H	
Weight:	120 lbs	
Electrical:	110-240VAC 60Hz / 2A	
Certifications:	UL approved, CE declared	

MyBinding.com
5500 NE Moore Court
Hillsboro, OR 97124
Toll Free: 1-800-944-4573
Local: 503-640-5920