

Formax FD 87HDS Hard Drive Shredder

Product Spec Sheet



Provided by

MyBinding.com
When Image Matters.

Call Us at 1-800-944-4573

Data integrity is more important than ever, so why simply discard a used hard drive?

Even if you erase the drive by magnetically degaussing, are you sure the data is secure?

The Formax **FD 87HDS Hard Drive Shredder** provides the best level of security by physically destroying discarded hard drives.

Simply load a hard drive into one of two cutting chambers and close the safety shield. With the push of a button, the rugged solid steel blades grind the hard drive into random sized pieces 1.6" wide and smaller for desktop hard drives and .19" wide and smaller for laptop drives. The shredded pieces fall into a convenient molded plastic waste bin for proper disposal or recycling.

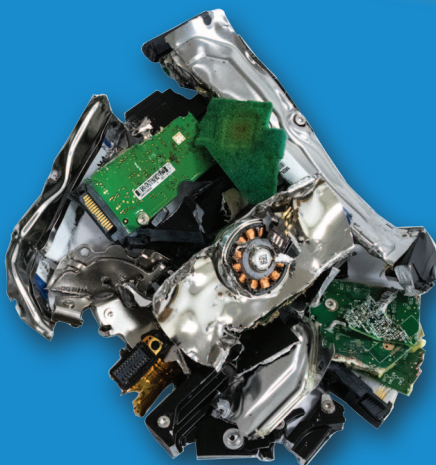
The FD 87HDS cutting blades are made of hardened steel for strength and durability. Each shredding chamber features a metal safety shield, and its own resettable LED counter to keep an accurate tally of shredded drives.

The LED control panel displays operational status and offers jam protection with Auto Reverse and Auto Stop. In addition, sensors stop the motor automatically if any of the doors are open or the waste bin is full. The powerful metal geared motor is housed in an all-metal cabinet with casters for mobility and is designed for low operational noise.

For that added measure of security, trust a Formax FD 87HDS Hard Drive Shredder to ensure your digital data stays out of the wrong hands.



Desktop Hard Drives



**Hard Drives
Shredded with the FD 87HDS**



Laptop Hard Drives

Standard Features

Separate Shredding Chambers: Accommodate 3.5" desktop and 2.5" laptop hard drives

Hardened Solid Steel Cutting Blades: Specially ground for strength and durability

LED Control Panel: Provides centralized control and displays real-time status

Resettable LED Counters: Each shredding chamber features its own resettable counter, for added accountability

High-Quality AC-Geared Motor: Powerful, efficient motor with heavy duty steel gears designed for high performance, minimal noise and years of trouble-free use

Shred Size: Desktop hard drives are shredded to 1.6" wide particles, while laptop drives are shredded to .19" particles

Molded Plastic Waste Bin: Durable and lightweight for easy removal

All-Metal Cabinet: Rugged steel cabinet with casters

Auto Reverse: Prevents jamming

Auto Cleaning: Allows the motor to run in reverse to clear shredded particles

Front Waste Bin Access: Allows the shredder to be placed against a wall

Safety Features

Fully Enclosed Shredding Chambers: Metal shields slide closed for operator safety

Safety Key Lock: Provides control, ensuring access only to authorized personnel

Large Emergency Stop Button: Quickly stops the motor and blades from turning

Circuit Breaker: Ensures safe operation

Thermal Overload Protection: Prevents overheating of the motor

Door Safety Sensor: Automatically stops the motor if the cabinet door is open

Waste Bin Full Sensor: Stops the motor automatically to avoid overflow

Warranty

1-Year Warranty on cutting head and all other parts



Separate shredding chambers sized for desktop and laptop hard drives, each with sliding metal safety shields and resettable LED counters

Specifications:

	3.5" Desktop Hard Drive	2.5" Laptop Hard Drive
Feed Opening:	4.72" (120mm)	3.54" (90mm)
Shred Particle Size:	1.6" (40mm) x random	.19" (5mm) x random
Infeed Capacity:	1 hard drive at a time	1 hard drive at a time
Speed:	3 - 4 drives per minute	3 - 4 drives per minute
Dimensions:	19.68" W x 18.5" D x 35" H (500 x 470 x 890mm)	
Weight:	1,102 lbs. (500kg)	
Security Level:	H-6 (DIN 66399 standard)	
Power Supply:	220V 20Amp 3 Phase NEMA Plug / Receptacle L1520P / L1520R	

* Capacity may vary due to variations in power supply.



LED control panel, safety key lock and large emergency stop button



Rugged molded plastic waste bin for convenient storage and disposal



Shredded particles fall into the molded plastic waste bin for easy storage and disposal

MyBinding.com
5500 NE Moore Court
Hillsboro, OR 97124
Toll Free: 1-800-944-4573
Local: 503-640-5920