

# ***Formax FD 8806SC Strip-Cut Industrial Conveyor Shredder***

Instruction Manual



*Provided by*

**MyBinding.com**  
*When Image Matters.*

Call Us at 1-800-944-4573

# FORMAX<sup>®</sup>

---

---

FD 8806CC Cross-Cut  
FD 8806SC Strip-Cut  
Industrial Conveyor Shredder

MyBinding.com  
5500 NE Moore Court  
Hillsboro, OR 97124  
Toll Free: 1-800-944-4573  
Local: 503-640-5920

11/2017

OPERATOR MANUAL  
FIRST EDITION

MACHINE SPECIFICATIONS		
Model Type	FD 8806CC	FD 8806SC
Serial #:		
Shred Size:	1/4" x 1.57"	1/2"
Sheet Capacity:	80 - 90	100 - 110
Speed:	Up to 43 fpm	Up to 43 fpm
Throat Width:	16"	16"
Waste Bin Capacity:	36 gallons	36 gallons
Motor:	3HP	3HP
Power:	3-Phase, 220V, 50/60Hz	3-Phase, 220V, 50/60Hz
Weight:	1008 lbs.	1008 lbs.

The serial number is specified on the nameplate of the shredder. Guarantee claims and inquiries cannot be processed if you do not quote the serial number.

Enter this number into the nameplate shown here immediately after receipt of the shredder.

MyBinding.com  
5500 NE Moore Court  
Hillsboro, OR 97124  
Toll Free: 1-800-944-4573  
Local: 503-640-5920

# TABLE OF CONTENTS

TOPIC	PAGE
Safety Precautions	1-2
Checking Safety Devices	3
Overview	4
Cutting Data, Speed, Dimensions, Weight	5
Motor Specifications, Power Requirements	5
Installation	5
EvenFlow™ Oiling System	5
Start-up: Main Switch and Control Panel	6
Operation, Overloading	7
Emptying Waste Bin	8
Exterior Cleaning	8

MyBinding.com  
5500 NE Moore Court  
Hillsboro, OR 97124  
Toll Free: 1-800-944-4573  
Local: 503-640-5920

# **Safety Precautions**

## **“Work safety” symbol**



This symbol marks all work safety notes in this manual which can endanger the health or life of operators. Please pay attention to this symbol and exercise particular care in such cases. Please also forward all work safety notes to other users. Apart from the instructions in this manual, you should also follow generally applicable safety and accident prevention regulation.

## **“Attention” notes**



This icon marks information in this manual which requires particular attention including guidelines, regulations, instructions and correct working procedures intended to prevent damage to the machine and/or other equipment.

## **Notes on work safety**

The FD 8806 shredder has been inspected for safety. However, improper operation and misuse risk the following:

- the health or life of the operator
- the machine and other valuable equipment
- the efficient operation of the shredder.

The FD 8806 employs state-of-the-art technology and is safe to operate. However, this machine can become hazardous if used incorrectly, by untrained staff or for purposes other than those for which it is designed.

- Material with a tendency to curl, e.g. tapes, cords, etc. should not be processed.
- Keep long hair, loose clothes, ties, scarves, etc. away from paper feed opening.
- Only one person should operate the shredder at a time.
- Always follow local safety and accident prevention regulations when operating the shredder.
- No pedestals or other raised surfaces may be placed in the vicinity of the machine if they alter the safety clearances.
- All connecting cables must be laid in such a way that they cannot be tripped over.
- Mechanical wearing parts must be inspected once a year.

MyBinding.com  
5500 NE Moore Court  
Hillsboro, OR 97124  
Toll Free: 1-800-944-4573  
Local: 503-640-5920

The FD 8806 shredder is intended **only** for shredding paper, paperboard and cardboard. It is designed for shredding large volumes of archive files, bound EDP lists and the contents of waste paper bins. The hardened, solid-steel cutting rollers are unaffected by loose-leaf binders, paper clips and staples contained in these materials.

Any other use beyond the scope described here is regarded as not being in accordance with the instructions. The manufacturer will not be held liable for damage resulting from incorrect use; the user alone is responsible.

Users must also follow the assembly, dismantling, re-assembly, operation and maintenance procedures specified by the manufacturer. The operation, maintenance and repair of the machine must be performed only by trained personnel who are aware of the potential dangers.

The relevant accident prevention regulations as well as other generally recognized rules concerning safety engineering and occupational safety must be observed.

- Each person responsible for assembling, dismantling and reassembling and maintenance (inspection, servicing, repair) of the shredder must have read and fully understood the entire operating manual, in particular the "Safety" section.
- The shredder may only be operated, serviced and repaired by authorized, trained personnel.
- The shut-down procedures specified in this manual must be followed during all assembly, dismantling and re-assembling, cleaning, and maintenance work. This type of work must be performed only when the machine is idle.
- The drive of the FD 8806 must be secured against unintentional switching-on before performing work on the machine. Set the main switch to "Off" and unplug machine from wall outlet.
- After repair, check all protective devices to be sure they have been re-installed before operation.
- Do not perform any work which may impair your safety while operating the machine.
- Immediately report any changes which impair your safety to the person responsible. Shut the machine down until such damage has been resolved.
- Before operating the shredder, ensure that it is in perfect working condition.
- Ensure that the workplace around the FD 8806 is always clean and safe.
- The user must not make any conversions or changes on his own initiative which impair the safety of the FD 8806. Protective devices must not be removed or rendered inoperative.
- All work which is not directly connected to the normal operation of the machine must always be performed when the machine is idle.
- Doors and flaps must not be opened until the machine is motionless. Observe safety labels!
- Test the safety features after installing or repairing electrical components.

## Checking the safety devices

Check the safety devices:

- at the start of each work shift (when operation is sporadic)
- at least once a week in continuous operation
- after each maintenance or repair

Check the safety devices for:

- specified condition
- specified location
- safe attachment
- specified function

Correct defects before you operate the shredder.

1. Immediately shut down the shredder if defects occur during operation and make sure the defects are corrected.
2. Do not modify or remove protective devices. Do not switch off protective devices. For safety reasons, modifications of the machine are not allowed.



**Danger:** Defective safety devices can cause serious accidents. If safety devices are not working properly, the shredder should immediately be put out of operation.

**Never** reach into the cutting system while it is operating; you risk serious injury!

Only when all safety devices are operating correctly can the shredder be used again.

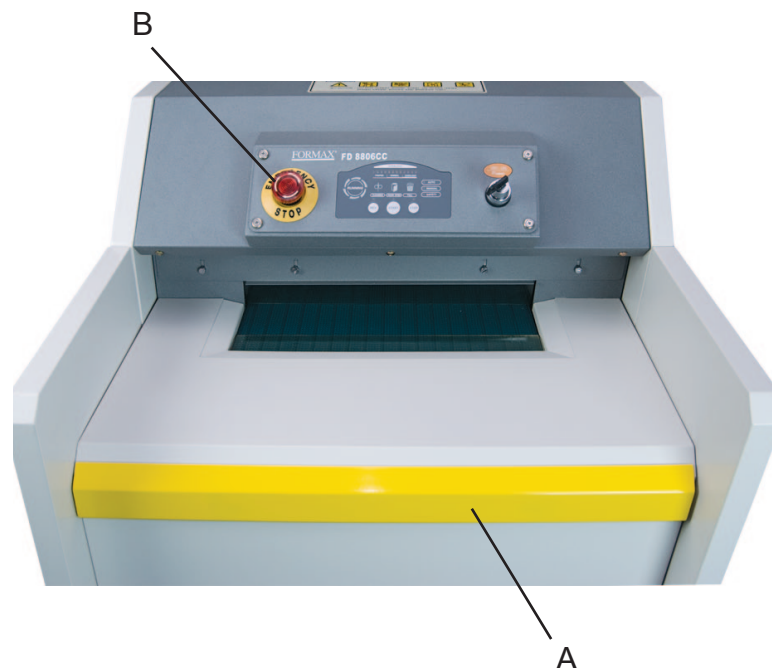
**Operate the shredder only when these devices have been checked and are in order.**

1. Check the **Safety Bar** push button (A) in front of the feeding table:

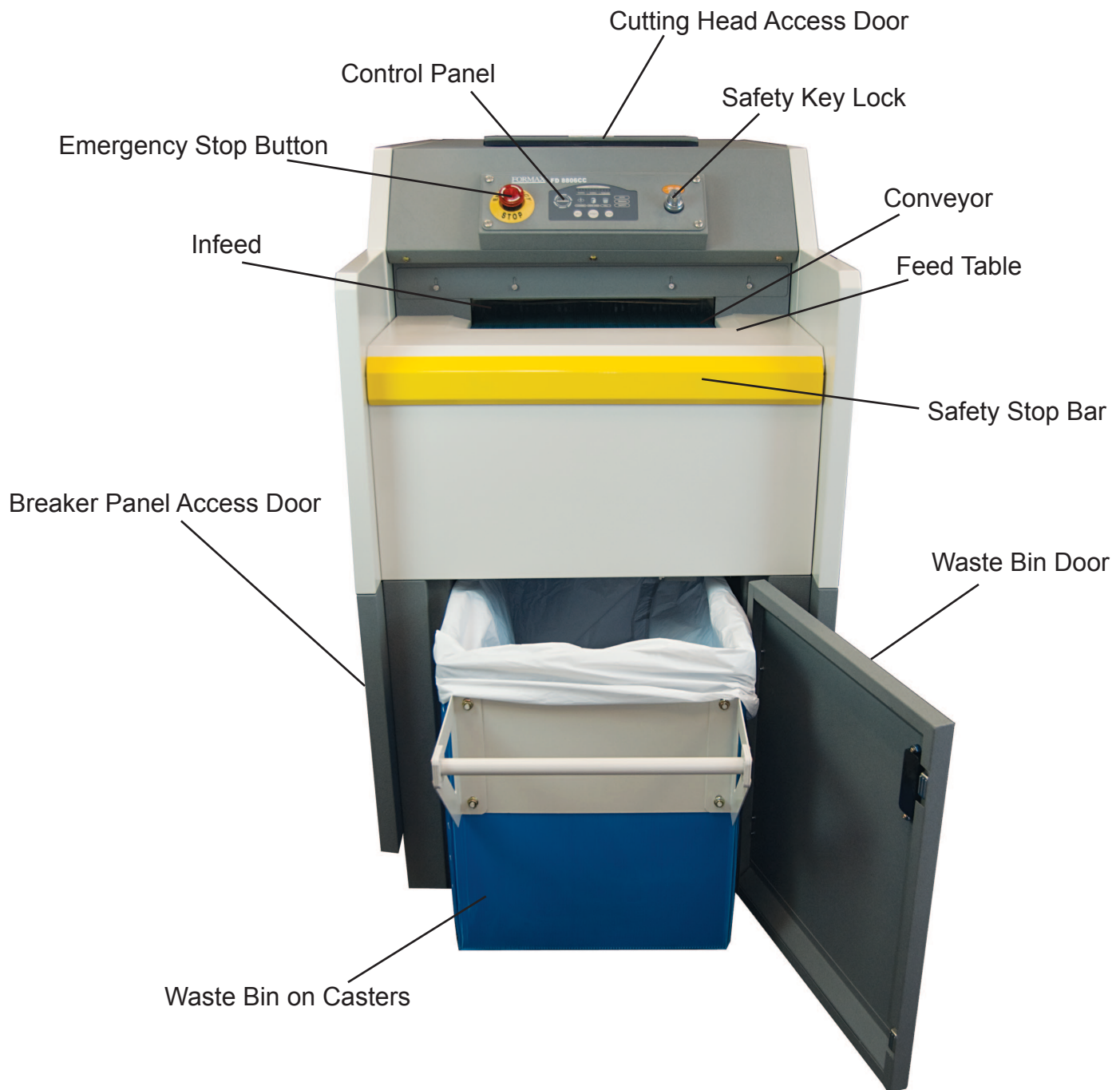
The shredder must switch off immediately when you press the **Safety Bar** button and the Emergency stop light must go on.

2. Check the **Stop** button (B) on the left of the control panel:

The shredder must switch off immediately when the button is pushed.



## General Overview



Breaker Panel

MyBinding.com  
5500 NE Moore Court  
Hillsboro, OR 97124  
Toll Free: 1-800-944-4573  
Local: 503-640-5920



## Cutting Data, Speed, Dimensions, Weight

Cutting Style:	Cross Cut	Strip Cut
Shred Size:	1/4" x 1.57" (6 x 40mm)	1/2"
Sheet Capacity:	80 to 90	100 to 110
Speed:	Up to 43 feet per minute (13m/min)	Up to 43 feet per minute (13m/min)
Feed Opening:	16" (410mm)	16" (410mm)
Dimensions:	28.3" W x 52.3" D x 48" H	28.3" W x 52.3" D x 48" H
Feed Table Dimensions:	28.3" W x 13.3" D x 37.2" H	28.3" W x 13.3" D x 37.2" H
Space Requirements:	39.3" W x 63" L x 52" H	39.3" W x 63" L x 52" H
Waste Bin Capacity:	36 gal.	36 gal.
Weight:	1008 lbs. (457kg)	1008 lbs. (457kg)

## Motor Specifications, Power Requirements

Motor Type	Horizontal Geared
Rated Power	3HP
Operating Voltage	220V
Phase	3-Phase
Frequency	50/60Hz
Rated Current	8.5A
Output RPM	25 RPM
Number of Poles	4 (3 hot & 1 ground)
Total Rated Power Pn	2.25 KW
Total Rated Current In	8.5 A
Total EOCR Protection	15 A

MyBinding.com  
5500 NE Moore Court  
Hillsboro, OR 97124  
Toll Free: 1-800-944-4573  
Local: 503-640-5920

## Installation

1. Appropriate power outlet must be available at installation site.
2. The FD 8806 is delivered completely assembled (although it can be delivered in parts, if necessary.) During transport, be aware of the shredder's high center of gravity.
3. The shredder can be moved on its casters. If a fork-lift is used, be sure to use the designated pick-up points.
4. Install the shredder on a flat and even floor without carpeting.
5. Once the shredder is in place, lock the caster brakes, and plug in power to appropriate power source.



Power Plug

## EvenFlow™ Automatic Oiling System

The FD 8806 is equipped with the EvenFlow™ automatic oiler. To prepare the oiler:

1. Attach the mounting bracket to the right side of the shredder with the screws provided.
2. Remove the cap from the oiler bottle.
3. Slide the oiler tube through the threaded cap and screw cap onto bottle.
4. Place bottle securely in the mounting bracket.



# Start-up and Operation

## Main Switch

1. On the left side of the machine, open the orange door leading to the electrical control panel. Push on the lever (Fig. 1) and the handle will pop out. Pull to open (Fig. 2).
2. Flip the main power switch to the UP position (Fig. 3). Close electrical control panel door.
3. Insert key into On-Off switch to right of control panel (Fig. 4). Turn key right, to the On position.



Fig. 1



Fig. 2

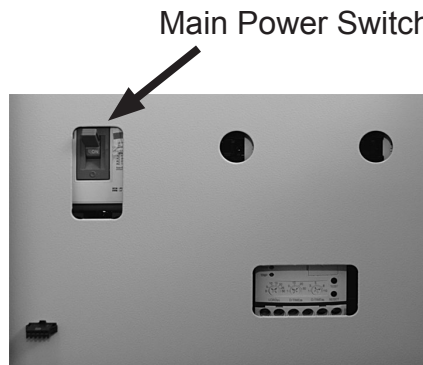
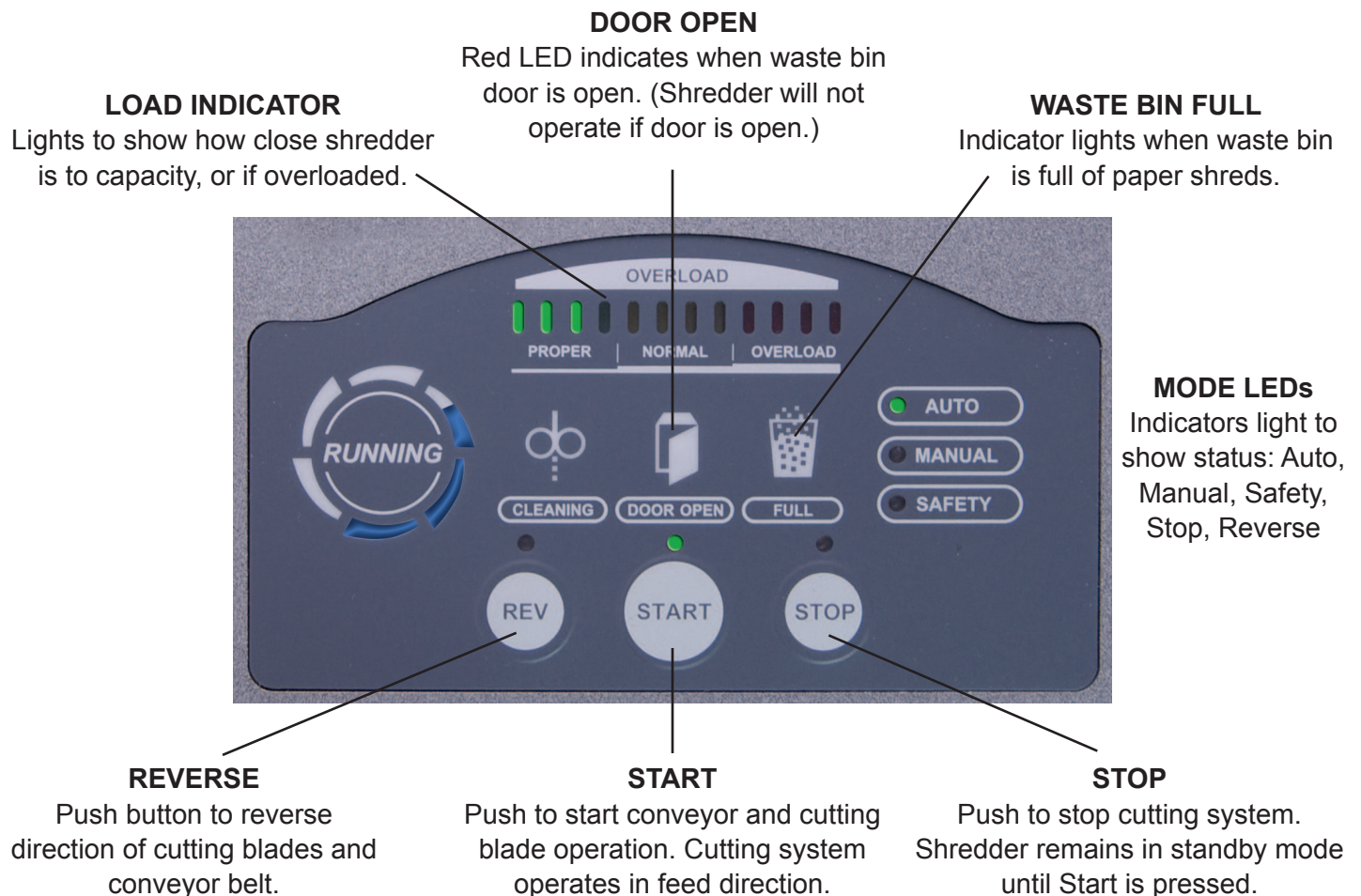


Fig. 3



Fig. 4

## Control Panel



## **Operation**

1. Set main switch to ON (Fig. 3). Turn the OFF/ON key switch on the control panel to the ON position.
2. Touch the START pad on the control panel. The conveyor will begin to move in the forward direction.
3. Place the material to be shredded on the feed table, then slide onto the inlet conveyor belt, in appropriate stacks. (Cross-Cut, up to 90 sheets. Sheet capacity may vary due to variables in paper thickness and power supply.)

NOTE: If material is accidentally placed onto the conveyor belt, DO NOT REACH FOR IT. Instead, press the Safety Stop bar on the front of the shredder, or press the red STOP button on the control panel. When the shredder stops, press and hold the REVERSE pad. The conveyor should operate in reverse, allowing safer access to the materials. The shredder will stop when the REVERSE pad is released. To resume shredding, press the START pad.

### **Turning off the shredder**

1. To shut down the shredder, press the STOP pad on the control panel.
2. Turn OFF/ON key switch on the control panel to the OFF position.
3. Open the electrical control panel door, and flip the main power switch DOWN to the off position.

### **Overloading the motor**

If the shred capacity of the machine is exceeded (too large a stack of paper, etc.), the shredder will stop automatically. To resume shredding:

1. Push and hold the reverse pad until the paper backs completely out of the shredder.
2. Press the red STOP pad or the SAFETY BAR on the front of the machine, then divide the materials into smaller stacks.
3. Press the START pad. The conveyor and internal shredding mechanisms will begin to move.
4. Continue shredding, feeding less paper at a time.

### **Frequent Overloading**

If the shredder is repeatedly overloaded, the motor can overheat, which will cause the shredder to switch off automatically. To resume shredding:

1. Allow the motor to cool down for approximately 20 - 30 minutes before using.
2. Once the motor has cooled sufficiently, resume shredding by following standard operating procedure (see Operation).



#### **NOTE:**

To maintain optimum performance and allow constant operation, avoid repeatedly overloading the shredder. This will prevent time-consuming reversing cycles, and will provide the highest possible throughput.

## Emptying the Waste Bin

Shredded paper and particles accumulate in the shredder waste bin during normal operation. When the red "Waste Bin Full" lamp lights, empty the waste bin.

1. Switch the shredder off by pressing the STOP pad on the control panel, turn the OFF/ON key switch to the OFF position and flip the main power switch to the OFF position.
2. Open the waste bin access door. Pull out and empty the waste bin.
3. Push the waste bin back in, close the door, turn power switches back on and resume shredding.

## Exterior cleaning

- Turn shredder off and unplug from wall outlet.
- Wipe the exterior surfaces with a soft cloth. If the surfaces are very dirty, use a neutral detergent, then wipe again with a soft cloth.

### CAUTION:

- Never put water directly on the surface of the shredder.
- Never clean the case with benzene or thinner, since it will cause discoloration.

MyBinding.com  
5500 NE Moore Court  
Hillsboro, OR 97124  
Toll Free: 1-800-944-4573  
Local: 503-640-5920