

Keencut 75" AZTC Hot Cut System - 61727

Instruction Manual



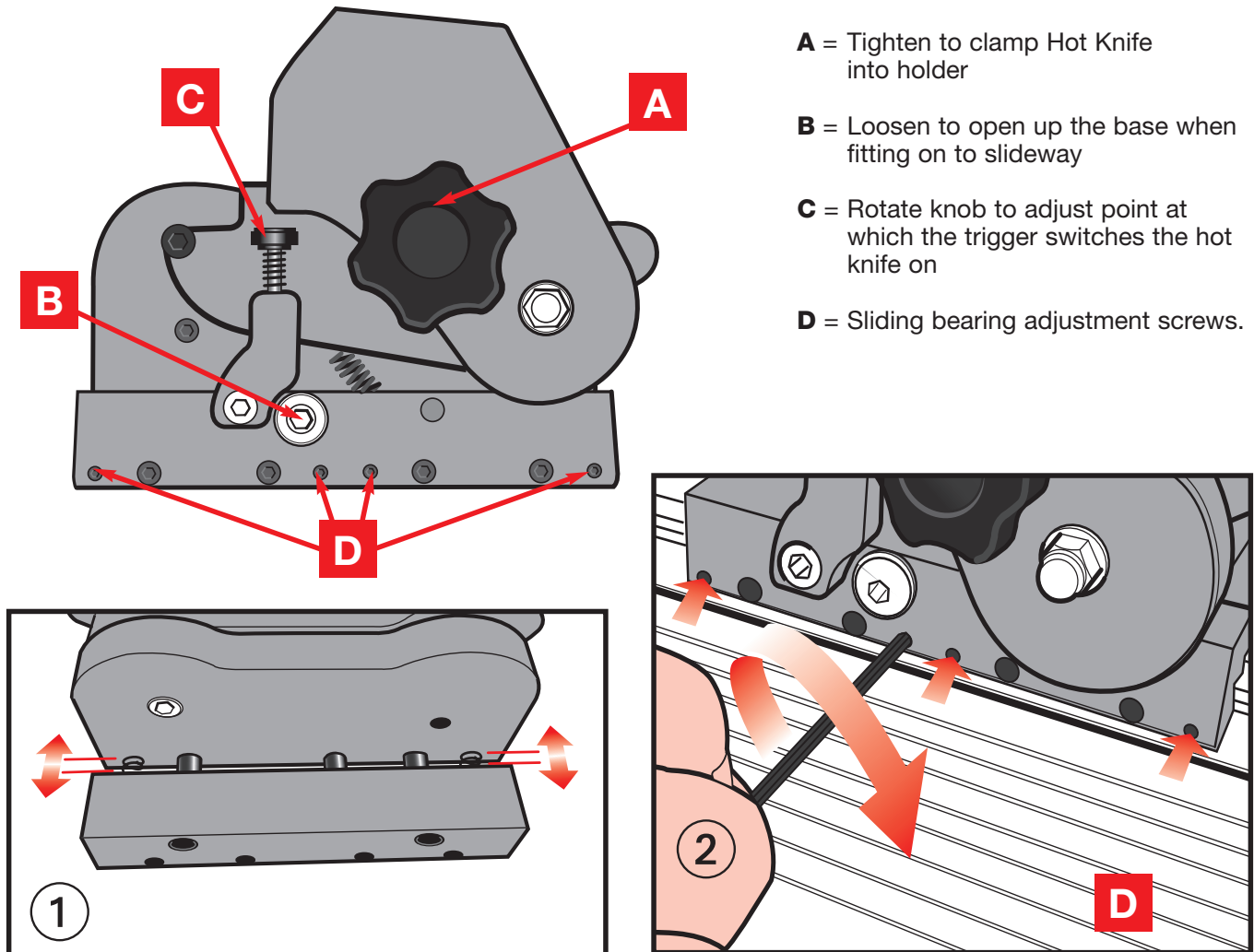
Provided by

MyBinding.com
When Image Matters.

Call Us at 1-800-944-4573

Fitting the AZ Hot Knife holder

The AZ Hot Knife attachment has been designed to accept the TC 20 Heated Knife and will need to be fitted with a Type 'T 013/45' blade.



A = Tighten to clamp Hot Knife into holder

B = Loosen to open up the base when fitting on to slideway

C = Rotate knob to adjust point at which the trigger switches the hot knife on

D = Sliding bearing adjustment screws.

A heatproof protective surface must be placed on the base of the machine under the fabric.

- ① To fit the attachment to the slideway loosen screw **B** to create a gap in the base sufficient for it to be lowered onto the slideway.

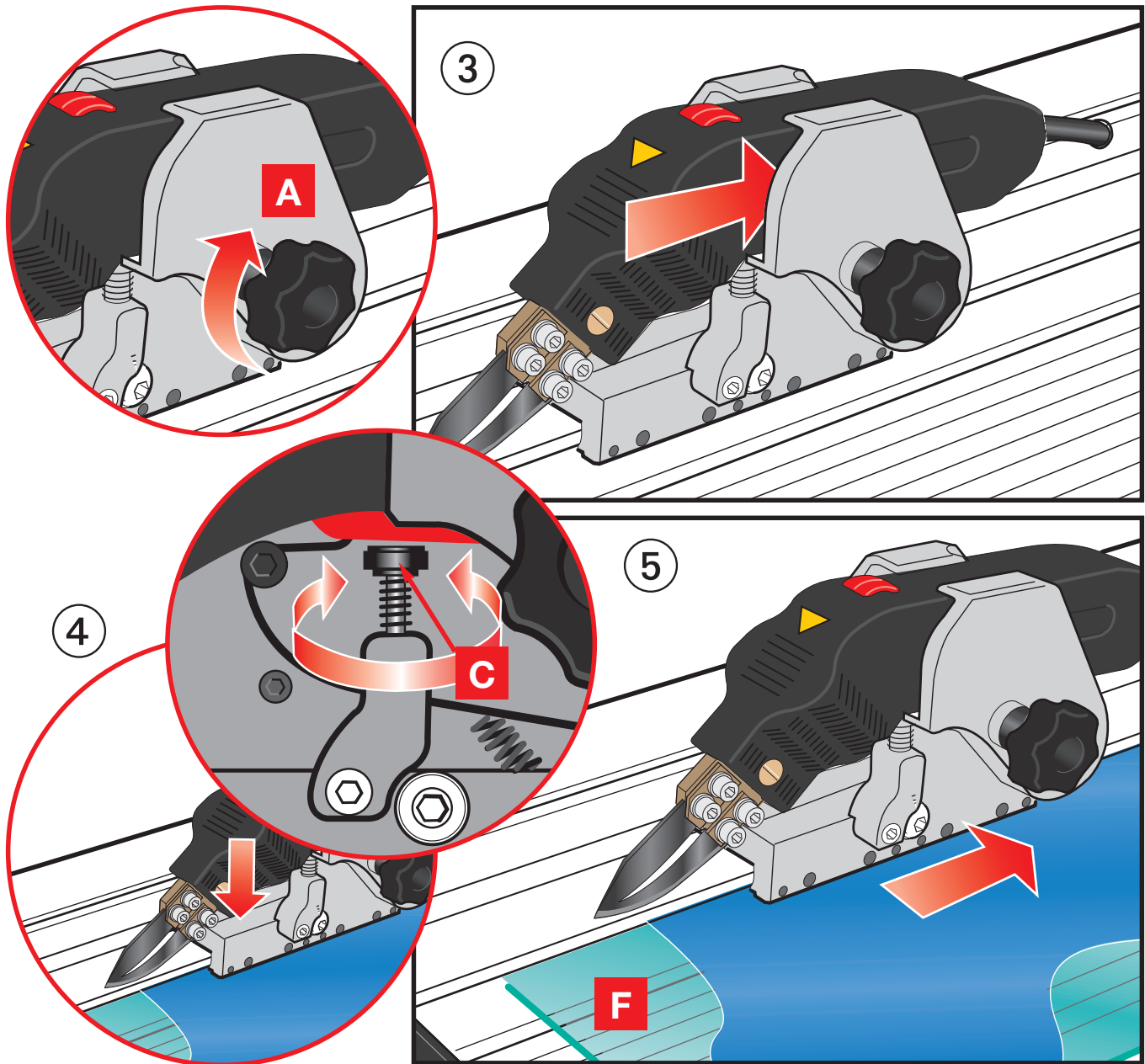
Tighten screw **B** and check that the cutting head runs smoothly.

- ② If the head is too loose or too tight when moved it can be adjusted, place the long end of the 2mm Allen key provided onto one of the four adjustment screws **D** and very gradually tighten it with one hand whilst moving the Cutting Head slowly with the other. Once you feel the sliding motion start to tighten undo the screw the smallest amount so the Cutting Head just slides easily.

Repeat this on the other screws in turn, two or three smaller adjustments on each screw may be needed to achieve an easy sliding movement with zero side play.

NOTE: Once the sliding bearings have been adjusted the attachment should not need readjusting if the cutting head is removed and replaced at a later time. It is however, important that screw **B** is fully tightened each time the cutting head is fitted to the machine.

Fitting and use of the AZ HOT KNIFE



- ③ To fit the Hot Knife, simply insert it into the holder ensuring the Hot Knife is seated fully into its recess. Tighten knob **A** and check Hot Knife is fully gripped in position, the blade should cut about 2-3mm (1/16" to 1/8") away from the edge of the slideway.
- ④ Depress the Hot Knife and the trigger should switch the heat on prior to it coming into contact with the fabric.
The trigger can be adjusted to alter the position the heat is switched on by turning knob **C**.
- ⑤ Once the blade has reached the correct temperature press down to bring the blade in contact with the fabric and slide the cutting head to the right to seal and cut it.

A heatproof protective surface F must be placed on the base of the machine under the fabric.