

Pallet Stretch Wrappers

Model:

PP-983 Series

A low-cost, entry level, semi-automatic machine.



PP-983 HP High Profile

*does not include ramp



NEW MODEL

Easy Thread Design
& Digital Control
Panel

PP-983 LP Low Profile



Series Features

- 250% Power pre-stretch
- 4,000lb load capacity
- Photo Eye
- "Easy Thread Design"
- New digital control panel with all standard features

mybinding.com
1-800-944-4573

Preferred Pack[®]

The New Industry Standard for Quality and Reliability

Pallet Stretch Wrapper

User-friendly Front Control Panel

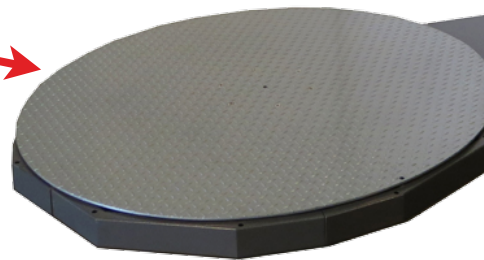
- PLC Control with 12 Program Memory
- On/Off Switch
- Top Wrap Count
- Bottom Wrap Count
- Start/Stop
- Manual/Automatic
- Pause Button
- Film Tension Control
- Turntable Speed
- Film Carriage Speed
- Emergency Stop Switch



Patented triple knurled roller pre-stretch system with 250% powered pre-stretch. Easy thread design with safety door; if opened machine will shut off.



Heavy duty chain drive on turntable with 14 sets of double roller turntable supports. No maintenance or lubrication required.



Technical Specifications:

- Production Rate:** 30-40 Loads Per Hour
- Power Requirements:** 115 Volts, 1 Phase, 15 Amp
- Maximum Load Size:** 50" L x 50" W x 85" H
- Maximum Load:** 4,000 lbs.
- Turntable:** 59" diameter - 3/8" Diamond Plate
- Turntable Drive:** 1/2 HP AC variable speed 0-15 rpm
- Turntable Drive Method:** Heavy Duty Chain ANSI #60
- Turntable Support:** Heavy Duty Delrin Roller Assembly
- Film Delivery System:** Patented triple knurled roller with "Easy Thread Design" to stretch film 250%
- Machine Dimensions:** 108" L x 59" W x 102" H
- Carriage Elevator:** Variable speed 1/2 HP- drive belt
- Controls:** PLC control with 10 program memory
- Photo Eye:** Will seek height of pallet load
- Forklift Portable:** Yes
- Home Position:** Turntable will automatically return to home position
- C.E. Approval:** Exceeds OSHA Safety Standards
- Warranty:** 3 Year Limited Warranty
- Film Capacity:** All Commercial 20" Wide Stretch Film
- Shipping Weight:** 1,500 lbs.

Optional Features:

- 72" diameter turntable
- Tower extension to 105"
- Base extension
- Insta-cut automatic film severance
- Weight scale packages

