

# ***Morgana DocuCrease 52 Manual 20.5" Hand- Operated Creaser***

Instruction Manual



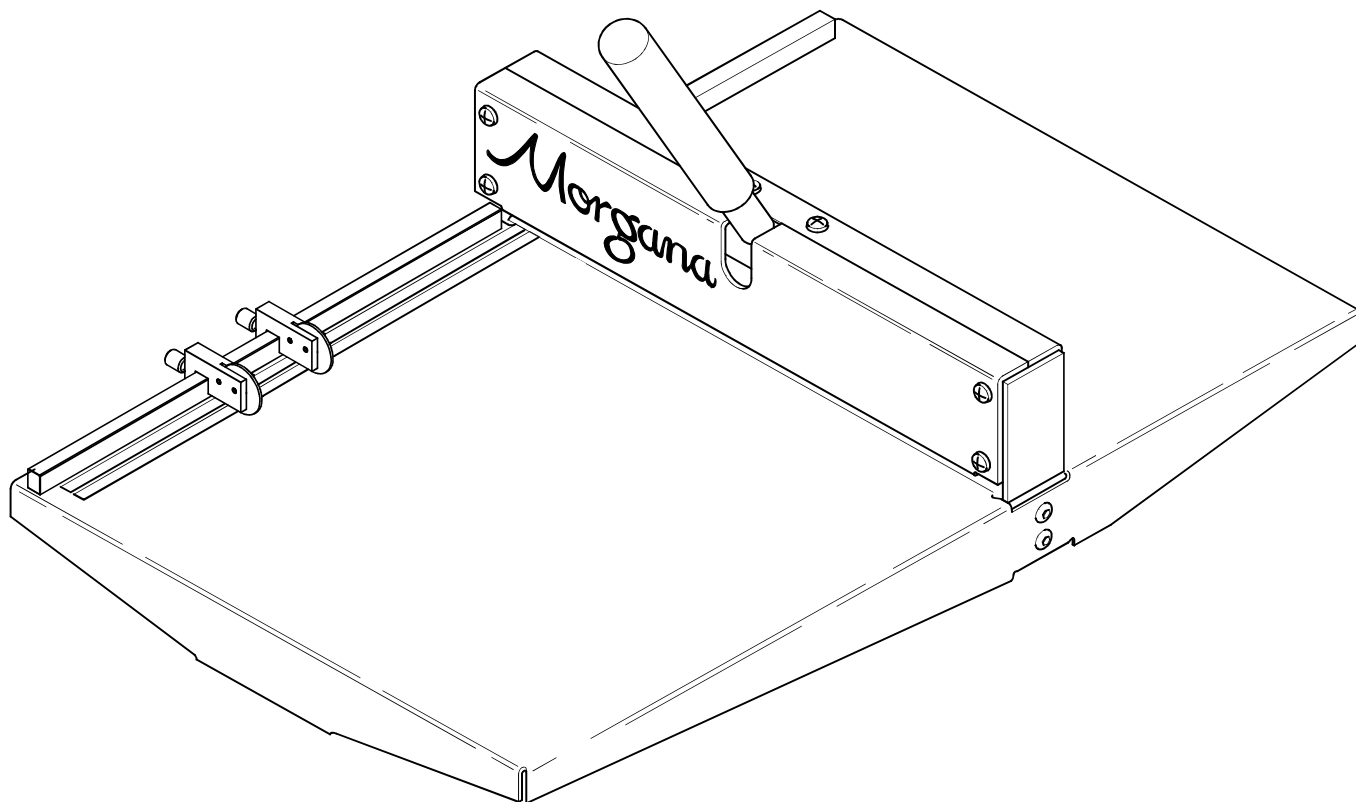
*Provided by*

**MyBinding.com**  
*When Image Matters.*

Call Us at 1-800-944-4573

# *Morgana*

## Docu-Crease 35 and 52



### **Docu-Crease 35 and 52**

### **Operators & Parts Manual**

MyBinding.com  
5500 NE Moore Court  
Hillsboro, OR 97124  
Toll Free: 1-800-944-4573  
Local: 503-640-5920

# Morgana Docu-Crease 35 and 52 Operating Instructions

## Installation and Safety

Place the Docu-Crease on a stable bench or table.  
Note the weight of the A3 Docu-Crease 35 = 13kgs  
and the A2 Docu-Crease 52 = 17kgs  
The Docu-Crease has been ergonomically designed  
to relieve operator fatigue as much as possible.  
Please recycle the packaging.

## Usage

Creases paper or board up to approximately 350gsm.  
Suppresses damage to toner, ink and cardboard  
when folding.  
Maximum creasing width is:  
350mm with Docu-Crease 35  
520mm with Docu-Crease 52

## Applications

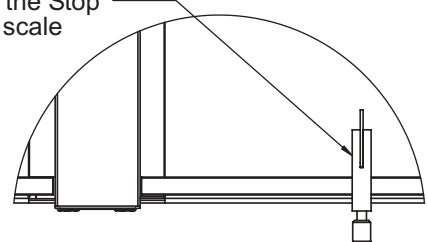
- Laminated stock, digital printing processes using toner or ink, laser colour or black and white copies, cardboard, coated stock, varnished surfaces, sensitive surfaces.
- Folding paper or cardboard against the grain.
- Greeting cards, reply cards, invitations, menus, laminates or covers prior to adhesive binding or saddle stitching.
- The creasing tool width suits most available stocks and materials with out the necessity for adjustments.

MyBinding.com  
5500 NE Moore Court  
Hillsboro, OR 97124  
Toll Free: 1-800-944-4573  
Local: 503-640-5920

## Operation

- 1 Using the measurement scales, set the stops to the required position as shown below. (i.e. for a crease length of 100mm, line the face of the stop up with the 100mm mark on the scale).  
Note the position for repeat jobs.  
Set the second stop for twin creasing applications.

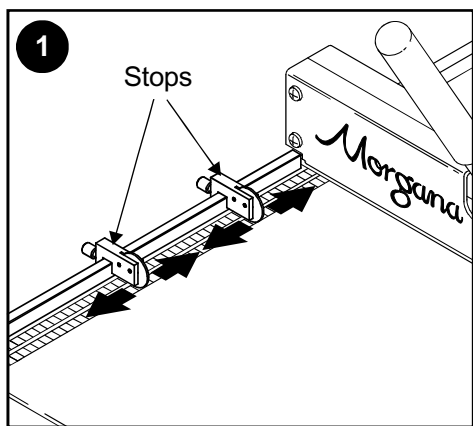
Line this face of the Stop  
up with the scale



- 2 Insert the material to be creased through the slot on the bed, under the first stop and align the material against the lay strip.
- 3 Keeping the material tight against the lay strip, slide the material towards the creasing head until it is clear of the stop. Then slide the material back towards the stop as far as it will go.
- 4 Move the handle downwards until you feel a slight resistance when the top creasing blade is touching the material. Apply light downward pressure to the handle and an accurate crease will be formed. Lift the handle to the upright position. Remove the material if only one crease is required.

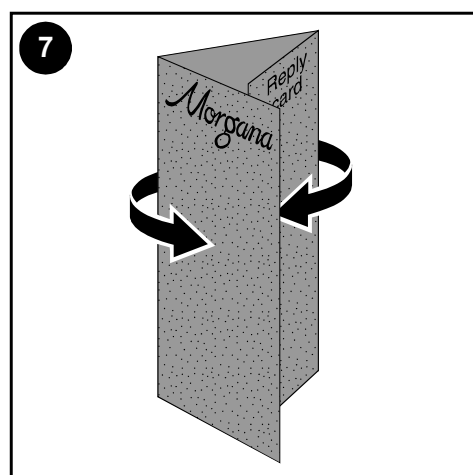
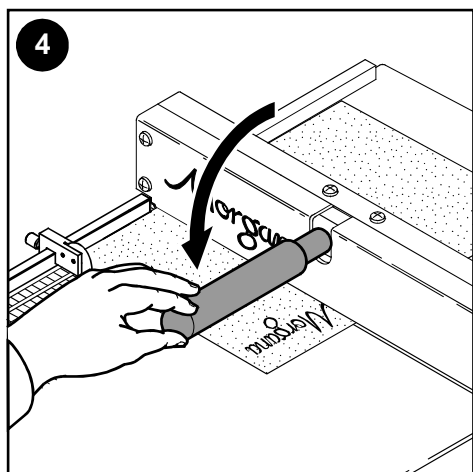
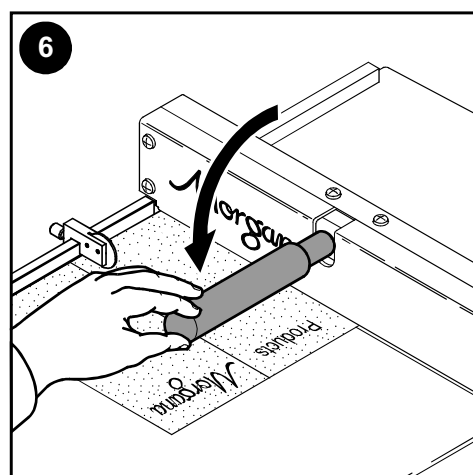
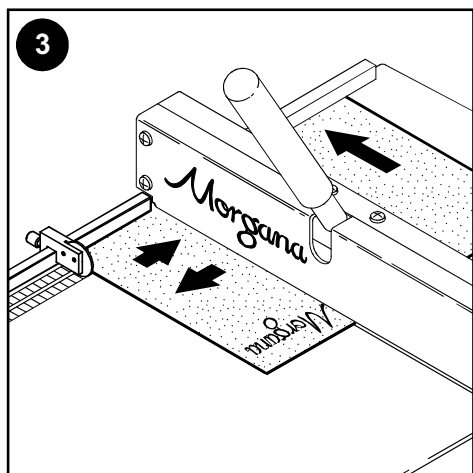
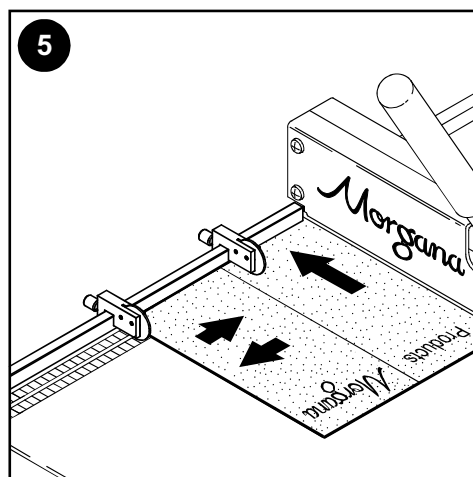
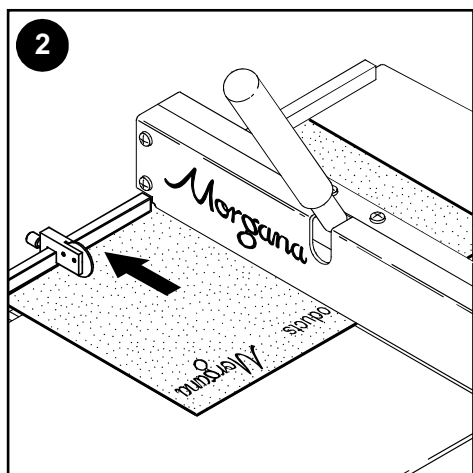
**Note: Applying heavy pressure will not create a better or deeper crease and may even damage the mechanism.**

- 5 When a second crease is required, move the material along to the second stop. Re-align again to the stop and lay strip as described in step 3.
- 6 Repeat the creasing process as described in step 4.
- 7 Hand fold along the crease.  
Note: always fold on the reverse of the creased side.  
see diagram 7.



**Docu-Crease 35 & 52** *Morgana*

MyBinding.com  
 5500 NE Moore Court  
 Hillsboro, OR 97124  
 Toll Free: 1-800-944-4573  
 Local: 503-640-5920

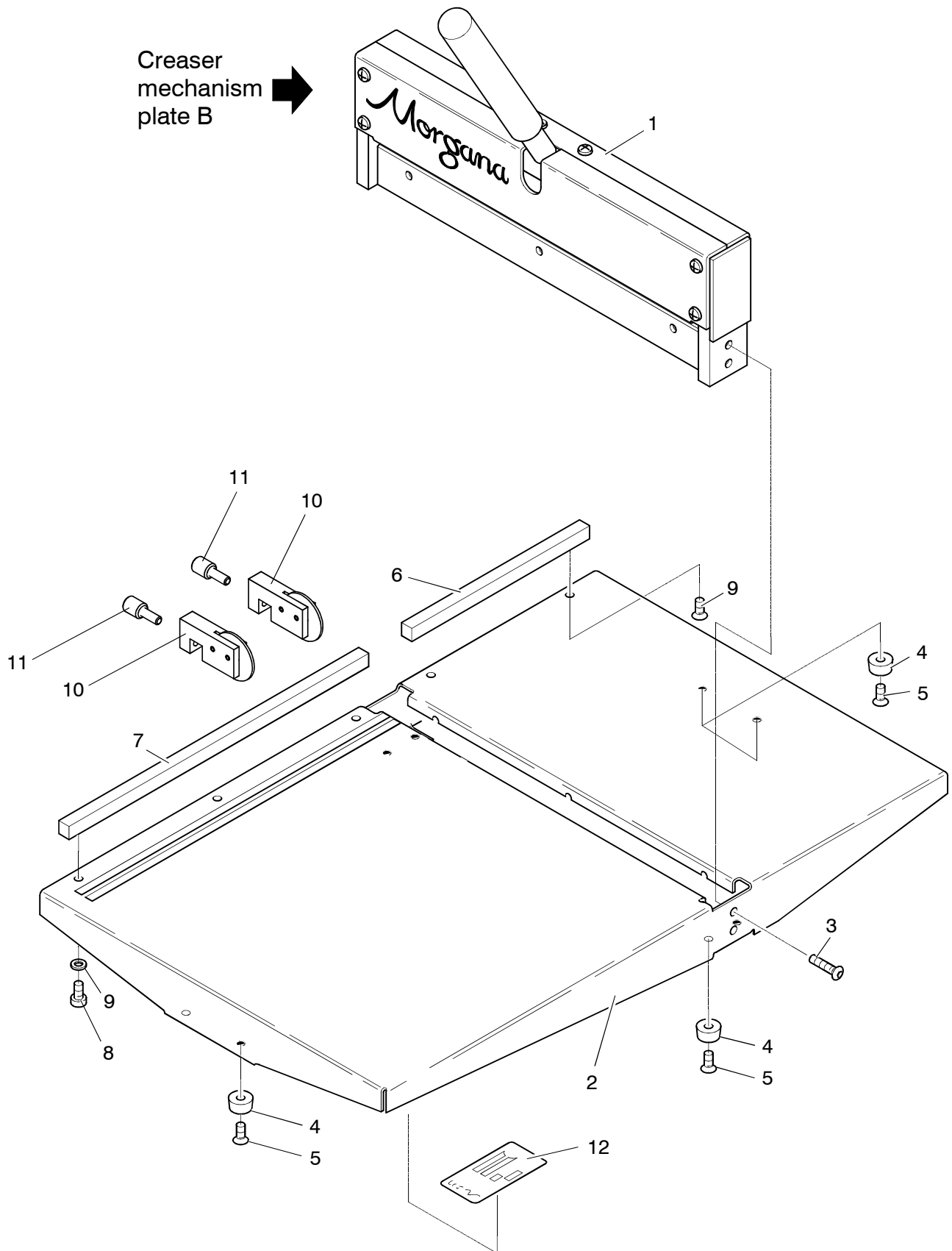


# *Morgana* Docu-Crease 35 parts list

Item No	Quantity per machine	Description	Part No
1	1	Creaser Mechanism Complete	47-040-01
2	1	Bed - 350 x 600	47-068-03
3	4	Screw - Socket button head M8 x 25	405-01-080-025
4	6	Fixing Feet - Black	601-109
5	4	Screw - Pan Pozi Taptite M4 x 8	401-02-040-008
6	1	Lay Strip - Input	47-069-03
7	1	Lay Strip - 350	47-069-01
8	5	Screw - Cap head M4 x 8	403-01-040-008
9	5	Washer - Plain M4	481-040
10	2	Speed Stop Assembly	47-301-01
11	2	Universal Knob Assy. - M5 x 13 Lg - Black	28-015
12	1	Specification label	65 - 104

PLATE  
A

MyBinding.com  
5500 NE Moore Court  
Hillsboro, OR 97124  
Toll Free: 1-800-944-4573  
Local: 503-640-5920

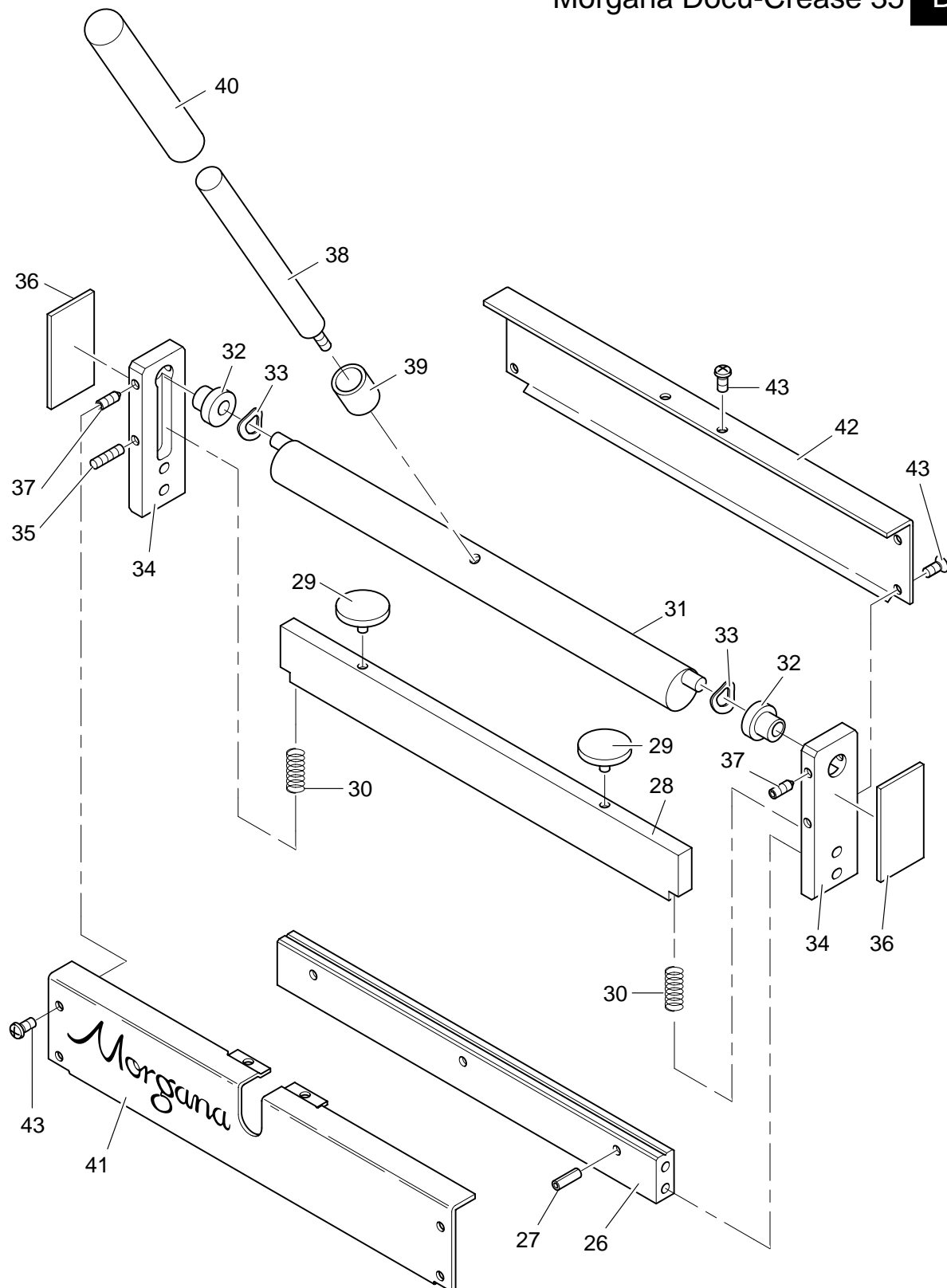


# *Morgana* Docu-Crease 35 parts list

## PLATE B

Item No	Quantity per machine	Description	Part No
26	1	Creasing Anvil	47-048-01
27	3	Spirol Pin 5 x 26 carbon steel	603-062
28	1	Creasing Blade - 350	47-049
29	2	Thrust Pad - blade	47-061
30	2	Spring Compression	604-067
31	1	Cam Shaft - 350	47-033-01
32	2	Adjuster Bearing	47-030
33	2	Waved Washer	604-068
34	2	Side Cheek	47-047
35	1	Screw - Socket Set - Flat point M4 x 16	409-01-040-016
36	2	Facia Plate - Side Cheek	47-039
37	4	Screw - Socket Set - Knurled point M4 x 6	407-01-040-006
38	1	Handle	47-053
39	1	Buffer - Handle	47-052
40	1	Softex Grip	601-107
41	1	Front Cover - 350 wide	47-063-01
42	1	Rear Cover - 350 wide	47-045-01
43	12	Screw - Pan Pozi Taptite M4 x 6	401-02-040-006

MyBinding.com  
 5500 NE Moore Court  
 Hillsboro, OR 97124  
 Toll Free: 1-800-944-4573  
 Local: 503-640-5920



MyBinding.com  
 5500 NE Moore Court  
 Hillsboro, OR 97124  
 Toll Free: 1-800-944-4573  
 Local: 503-640-5920

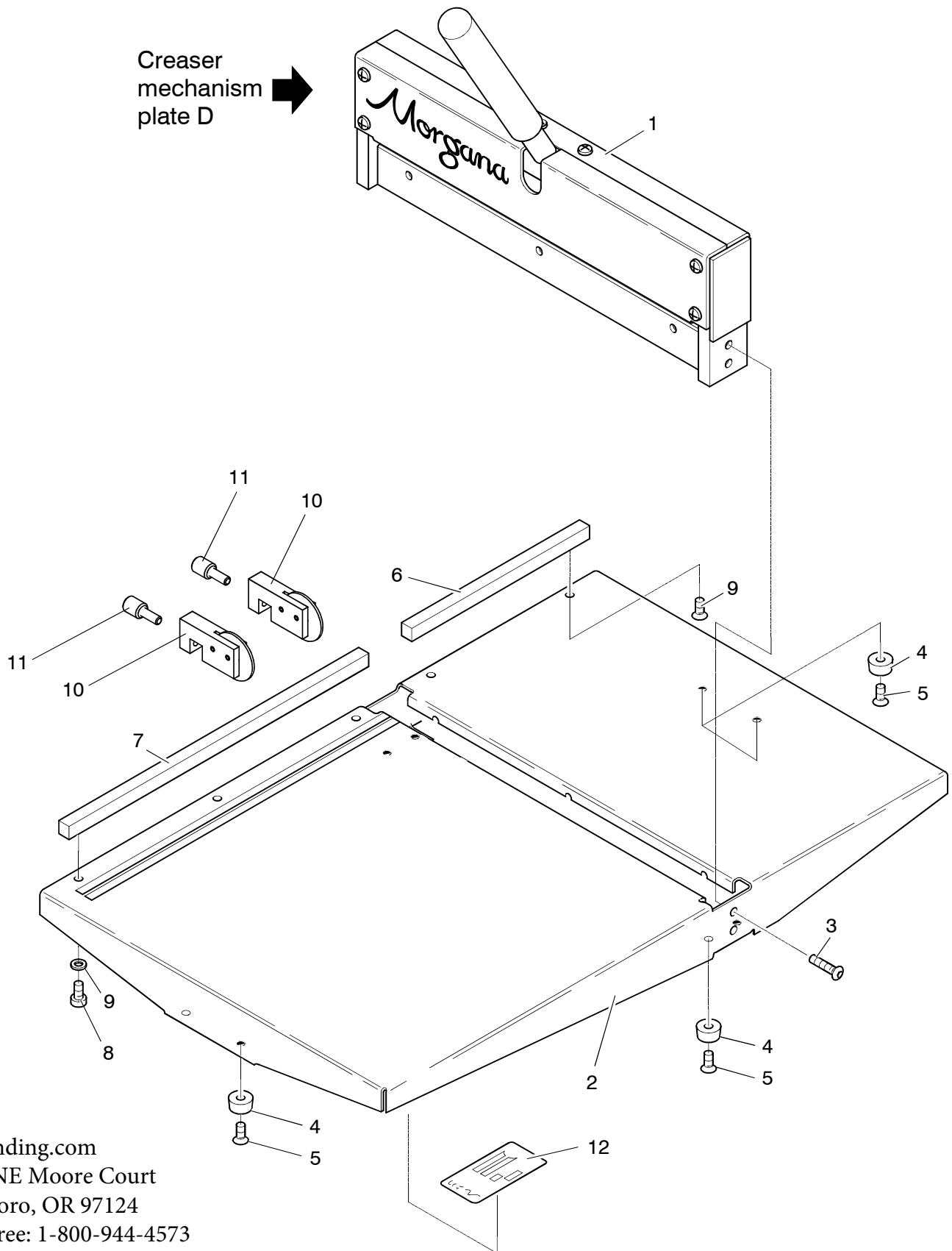


# *Morgana* Docu-Crease 52 parts list

Item No	Quantity per machine	Description	Part No
1	1	Creaser Mechanism Complete	47-040-02
2	1	Bed - 520 x 700	47-068-04
3	4	Screw - Socket button head M8 x 25	405-01-080-025
4	6	Fixing Feet - Black	601-109
5	6	Screw - Pan Pozi Taptite M4 x 8	401-02-040-008
6	1	Lay Strip - Input	47-069-03
7	1	Lay Strip - 520	47-069-02
8	6	Screw - Cap head M4 x 8	403-01-040-008
9	6	Washer - Plain M4	481-040
10	2	Speed Stop Assembly	47-301-01
11	2	Universal Knob Assy. - M5 x 13 Lg - Black	28-015
12	1	Specification label	65 -104

PLATE  
C

MyBinding.com  
5500 NE Moore Court  
Hillsboro, OR 97124  
Toll Free: 1-800-944-4573  
Local: 503-640-5920



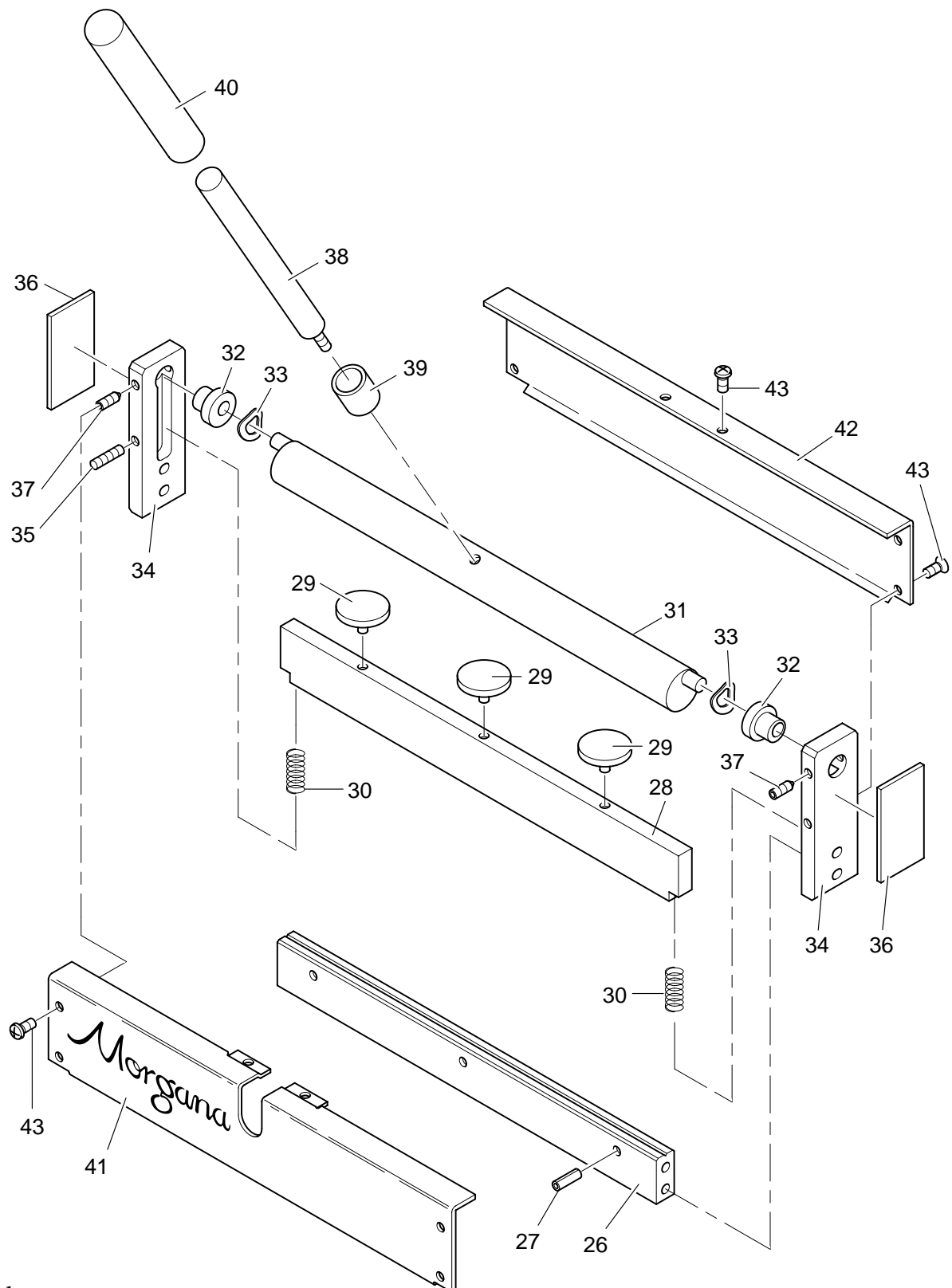
MyBinding.com  
5500 NE Moore Court  
Hillsboro, OR 97124  
Toll Free: 1-800-944-4573  
Local: 503-640-5920

# *Morgana* Docu-Crease 52 parts list

**PLATE  
D**

Item No	Quantity per machine	Description	Part No
26	1	Creasing Anvil	47-048-02
27	3	Spirol Pin 5 x 26 carbon steel	603-062
28	1	Creasing Blade - 520 wide	47-049-02
29	3	Thrust Pad - blade	47-061
30	2	Spring Compression	604-067
31	1	Cam Shaft - 520	47-033-02
32	2	Adjuster Bearing	47-030
33	2	Waved Washer	604-068
34	2	Side Cheek	47-047
35	1	Screw - Socket Set - Flat point M4 x 16	409-01-040-016
36	2	Facia Plate - Side Cheek	47-039
37	4	Screw - Socket Set - Knurled point M4 x 6	407-01-040-006
38	1	Handle	47-053
39	1	Buffer - Handle	47-052
40	1	Softex Grip	601-107
41	1	Front Cover - 520 wide	47-063-02
42	1	Rear Cover - 520 wide	47-045-03
43	12	Screw - Pan Pozi Taptite M4 x 6	401-02-040-006

MyBinding.com  
5500 NE Moore Court  
Hillsboro, OR 97124  
Toll Free: 1-800-944-4573  
Local: 503-640-5920

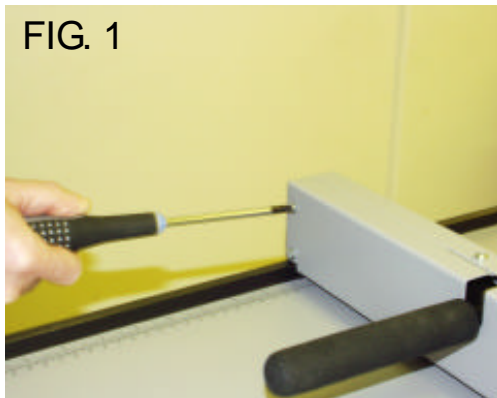


MyBinding.com  
5500 NE Moore Court  
Hillsboro, OR 97124  
Toll Free: 1-800-944-4573  
Local: 503-640-5920

## Blade Pressure Adjustment

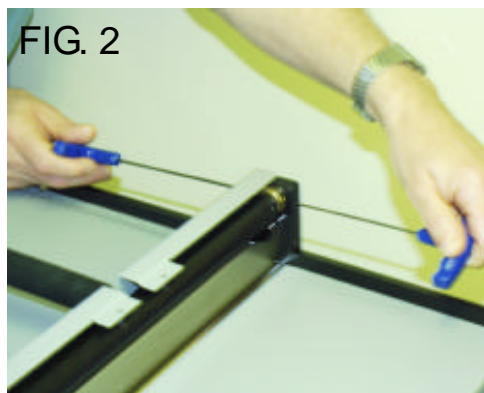
1. Remove the solid cover by unscrewing the six pan head pozi screws.
2. Remove the top screws of the slotted handle cover as shown in FIG.1.

FIG. 1

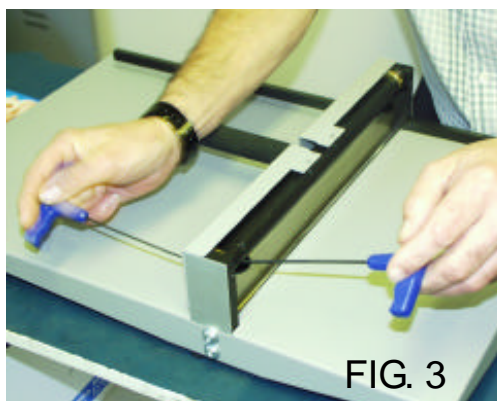


3. Loosen the four top locking grub screws as shown in FIG. 2.

FIG. 2



4. Depress the handle to the stop position as shown in FIG. 3, insert a 2.5mm allen key into the bronze bearing adjustment hole and rotate downwards until it stops. Repeat both sides and then tighten the four locking grub screws.



5. Check crease and refit covers.

MyBinding.com  
5500 NE Moore Court  
Hillsboro, OR 97124  
Toll Free: 1-800-944-4573  
Local: 503-640-5920

## ACCESSORIES AND OPTIONS

---

ITEM	PART NUMBER	DESCRIPTION
1	47-107	BLADE PRESSURE ADJUSTMENT KIT DOCUCREASE 35 / 52

MyBinding.com  
5500 NE Moore Court  
Hillsboro, OR 97124  
Toll Free: 1-800-944-4573  
Local: 503-640-5920