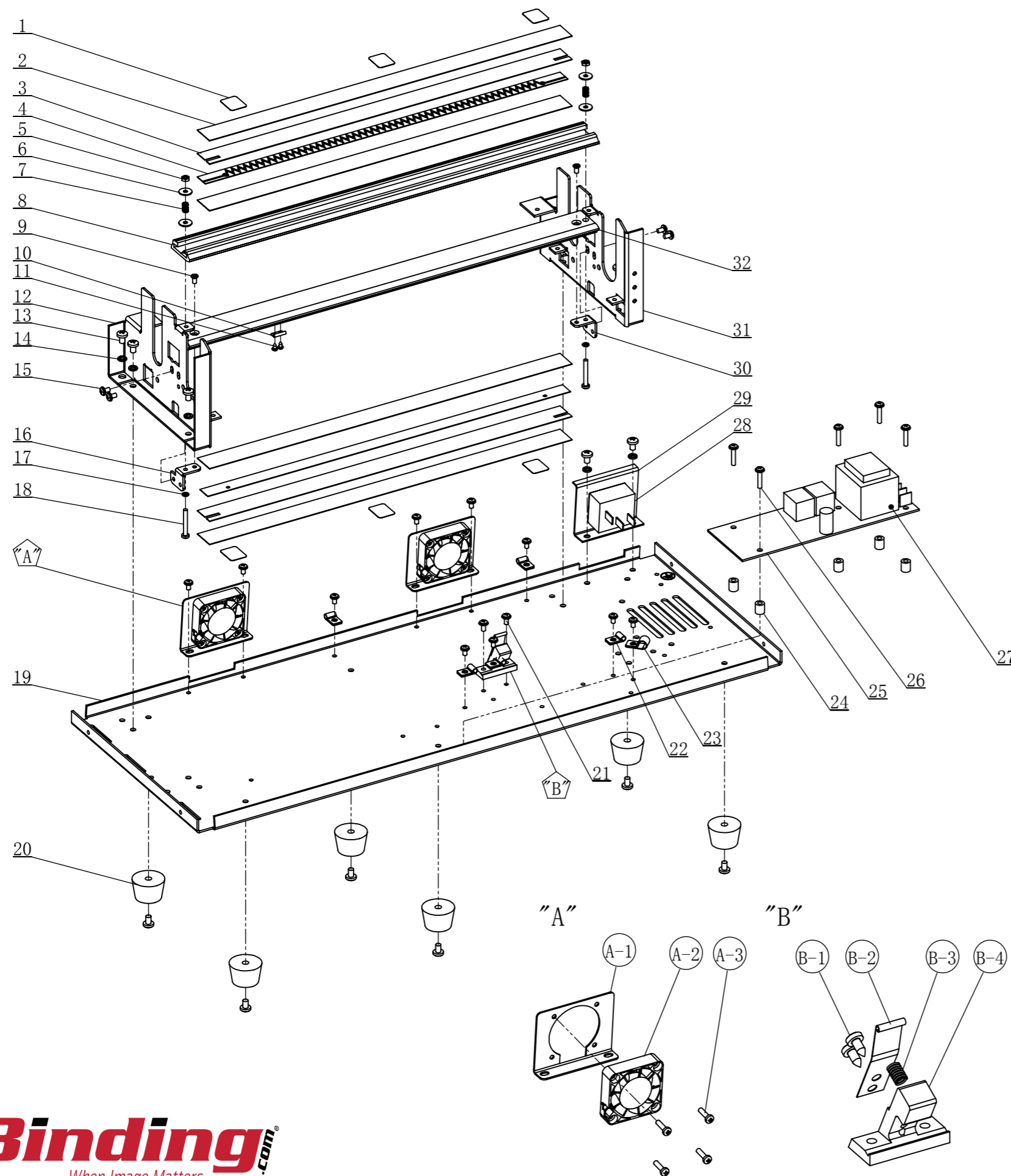




ASSEMBLY DRAWING AND PART LIST

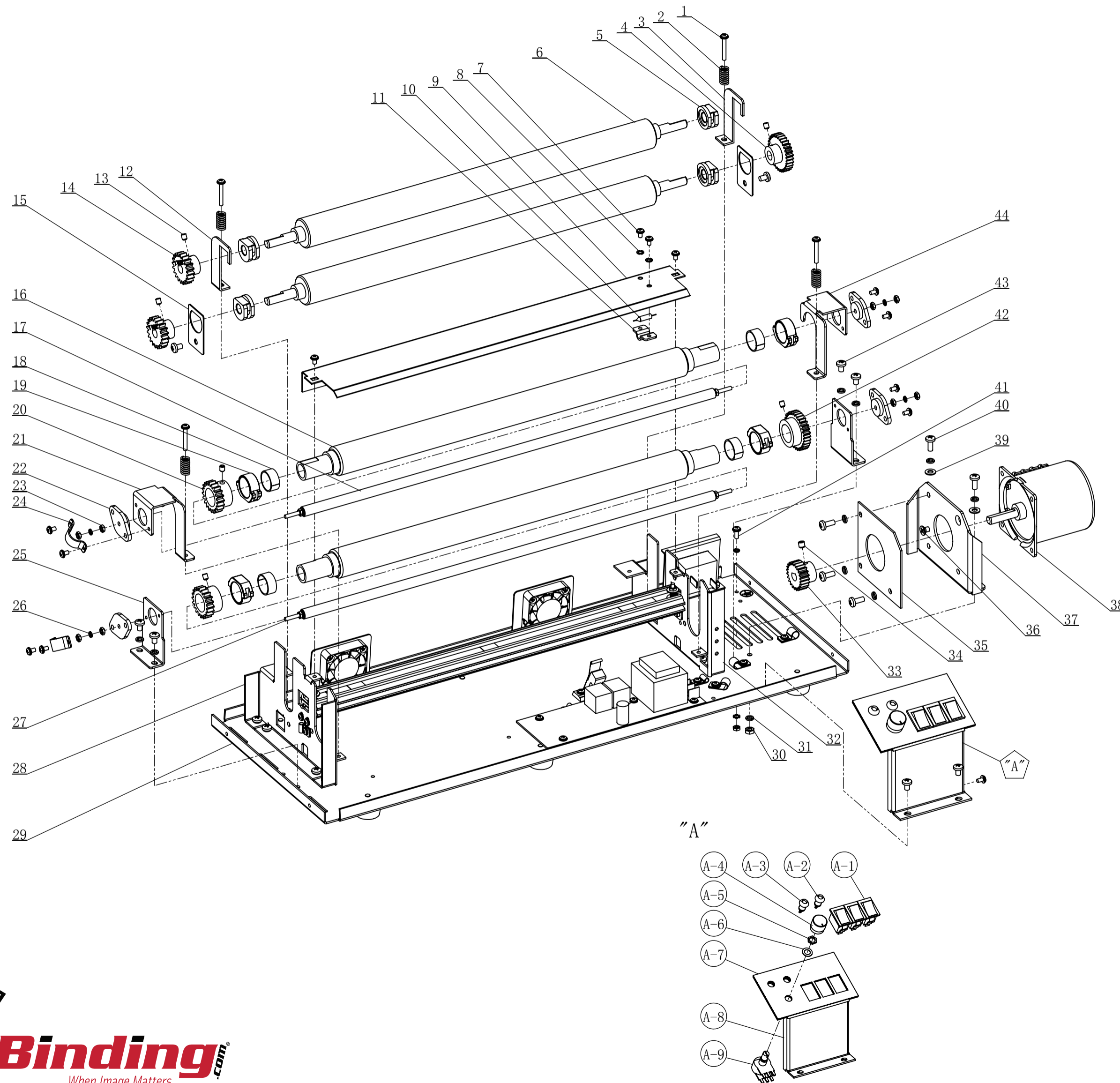
Model : PRO330
Date : 2011.09.22
Version : 1.0

PRO330 ASSEMBLY DRAWING 1



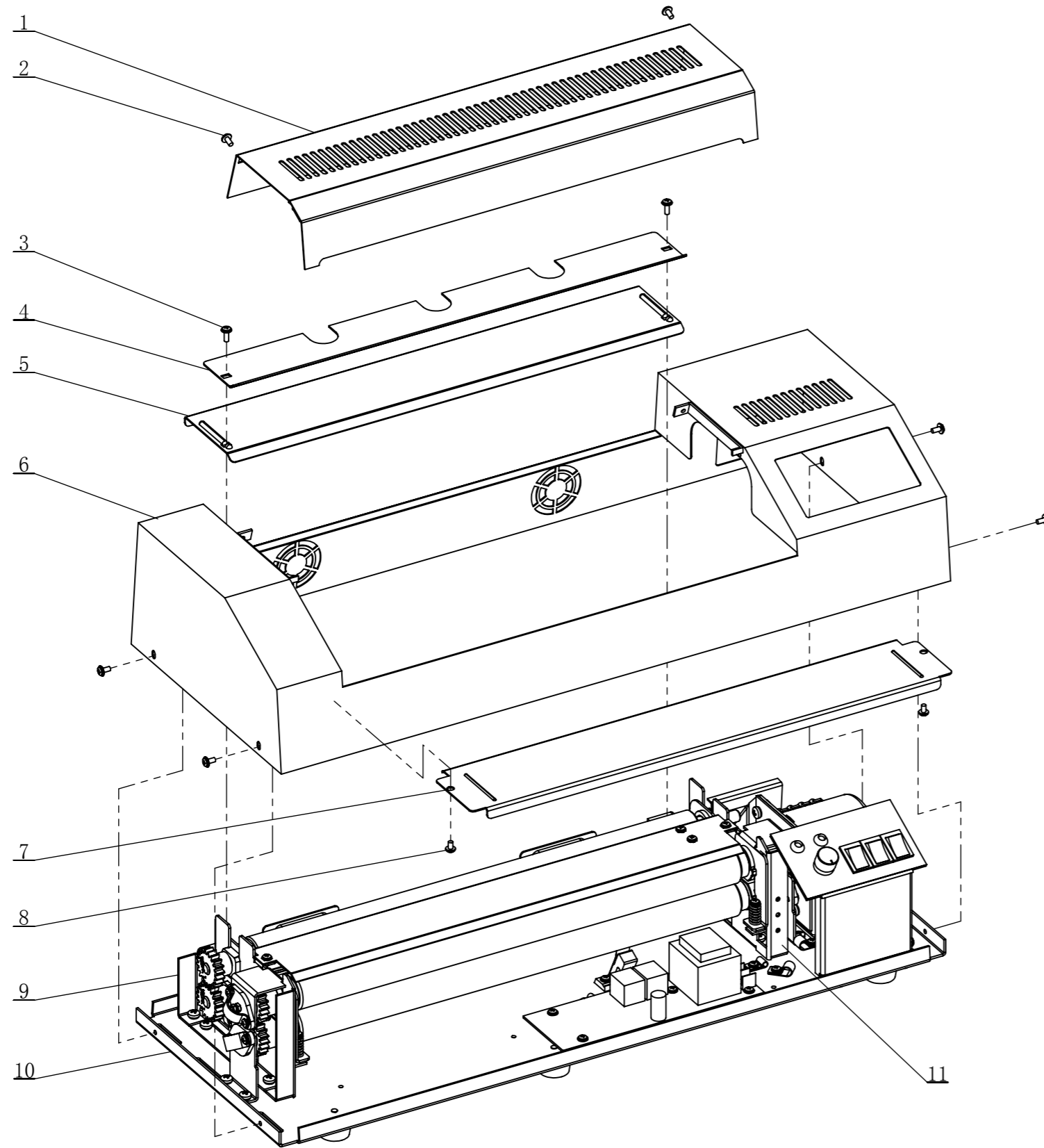
B-4	WH8.078.008	Plastic thermal frame	1	
B-3	WH8.382.002	Thermal spring	1	
B-2	WH8.048.020	Thermal plate	1	
B-1	WH8.912.005	Self-tapping screw ST2.9×6	2	
A-3	WH8.902.009	Screw M3×11	8	
A-2	WH6.395.005	Fan	1	
A-1	WH8.038.292	Pro-330 fan frame	2	
32	WH8.038.278	Teflon Lower aluminum heat even board	1	
31	WH8.038.441	Pro-330 right frame	1	
30	WH8.044.046	Right frame for heat even board	1	
29	WH8.038.434	Pro-330 fixed board for power socket	1	
28	WH5.566.001	Power socket	1	
27	WH4.702.011	Transformer(4-wires) 115V/10.5V-0.4A	1	
	WH4.702.012	Transformer(4-wires) 230V/10.5V-0.4A	1	
26	WH8.907.007	Screw with washer M3×15	4	
25	WH5.990.036	PCB	1	
24	WH7.860.004	Plastic bushing 7×8	4	
23	WH8.667.002	R type clip 6.4 1/4	1	
22	WH8.667.001	R type clip 3.3 1/8	4	
21	WH8.907.003	Screw with washer M3×6	2	
20	WH8.070.003	Rubber foot	6	
19	WH8.031.091	Base plate	1	
18	WH8.902.013	Screw with washer M3×22	2	
17	WH8.943.003	Spring washer 3	2	
16	WH8.044.045	Left frame for heat even board	1	
15	WH8.907.002	Screw with washer M3×5	13	
14	WH8.943.004	Spring washer 4	10	
13	WH8.912.102	Screw M4×6	16	
12	WH8.038.442	Pro-330 Left frame	1	
11	WH8.912.001	Self-tapping screw ST1.9×4	2	
10	WH8.044.132	Temperature measuring plate for heating even board	1	
9	WH8.903.001	Screw M3×6	2	
8	WH8.038.275	Teflon top aluminum heat even board	1	
7	WH8.382.012	Heat even board spring	2	
6	WH8.941.005	Flat washer 3×10×0.8	4	
5	WH8.930.003	Nut M3	4	
4	WH7.067.018	Mica heater	2	
3	WH7.252.006	Slot mica plate liner	2	
2	WH7.252.002	Mica plate liner	4	
1	WH8.048.022	Mica plate pressing board	6	
Item	Part No.	Description	Qty.	Remark

PRO330 ASSEMBLY DRAWING 2



A-9	WH4.680.010	Pontentiometer B100KΩ	1	
A-8	WH8.038.288	Switch frame	1	
A-7	WH8.103.006	Pannel	1	
A-6		Pontentiometer washer	1	
A-5		Pontentiometer nut	1	
A-4	WH6.354.003	Turning knob	1	
A-3	WH5.590.001	Green indicator light and lamp socket	1	
A-2	WH5.590.002	Red indicator light and lamp socket	1	
A-1	WH6.618.122	Switch KCD3 B-12	3	
44	WH8.038.330	Right top quartz tube frame	1	
43	WH8.902.102	Screw M4×6	8	
42	WH8.418.002	Feeding gear M1 Z32	1	
41	WH8.907.005	Screw with washer M3×8	1	
40	WH8.902.021	Screw M4×10	5	
39	WH8.941.006	Flat washer 4	2	
38	WH5.548.027	110V motor 60KTYZ 14W 10-12r/min	1	with five terminal
	WH5.548.018	220V motor 60KTYZ 14W 10-12r/min	1	with five terminal
37	WH8.038.327	General motor frame	1	
36	WH8.903.007	Sunk screw M4×6	1	
35	WH7.835.004	Motor isolator	1	
34	WH8.906.002	Fixing screw M5×5	1	
33	WH8.418.031	Motor gear M1 Z23	1	
32	WH8.038.441	Right frame	1	
31	WH8.943.004	Spring washer 4	11	
30	WH8.930.004	Nut M4	2	
29	WH8.031.091	Base plate	1	
28	WH8.038.442	Left frame	1	
27	WH7.067.022	110V bottom quartz tube	1	
	WH7.067.059	220V bottom quartz tube	1	
26	WH8.943.003	Spring washer 3	5	
25	WH8.038.331	Bottom quartz tube frame	2	
24	WH7.835.003	Insulation holder for quartz tube	2	
23	WH8.930.003	Nut M3	9	
22	WH8.078.001	Quartz positioning block	4	
21	WH8.038.329	Left upper quartz tube frame	1	
20	WH8.419.001	Feeding sync gear M1.25 Z20	2	
19	WH8.048.096	Self-lubricating bearing sleeve	4	
18	WH8.251.013	Self-lubricating bearing 1608	4	
17	WH7.067.059	110V Top quartz tube	1	
	WH7.067.022	220V Top quartz tube	1	
16	WH8.309.069	Feeding roller	2	
15	WH8.048.024	Back roller fixer	2	
14	WH8.419.004	Output sync gear M1.25 Z20	2	
13	WH8.906.001	Fixing screw M4×5	6	
12	WH8.044.075	Output left spring plate	1	
11	WH8.044.079	Fuse pressing buckle	1	
10	WH6.616.403	Fuse BF157	1	
9	WH8.044.134	Top insulation cover	1	
8	WH8.946.001	lock washer 3	2	
7	WH8.907.002	Screw with washer M3×5	13	
6	WH8.309.075	Output roller	2	
5	WH6.268.005	Output roller sleeve	4	
4	WH8.418.034	Output gear M1 Z31	1	
3	WH8.044.076	Output right spring plate	1	
2	WH8.382.011	Pressing spring	4	
1	WH8.907.010	Screw with washer M3×25	4	
Item	Part No.	Description	Qty.	Remark

PRO330 ASSEMBLY DRAWING 3



11	WH8.038.441	Right frame	1	
10	WH8.031.091	Base plate	1	
9	WH8.038.442	Left frame	1	
8	WH8.907.002	Screw with washer M3x5	2	
7	WH8.038.477	Feeding table	1	
6	WH6.106.121	Big cover	1	
5	WH8.038.474	Bottom output board	1	
4	WH8.038.471	Top output board	1	
3	WH8.907.005	Screw with washer M3x8	2	
2	WH8.907.004	Screw with washer M3x6	6	
1	WH6.106.071	Small cover	1	
Item	Part NO.	Description	Qty	Remark