

SEAL 62 Pro D 61" Wide Format Roll Laminator

Brochure



Provided by

MyBinding.com
When Image Matters.

Call Us at 1-800-944-4573



SEAL® 62 Pro

Laminators



MyBinding.com
5500 NE Moore Court
Hillsboro, OR 97124
Toll Free: 1-800-944-4573
Local: 503-640-5920

The SEAL 62 Pro is a 61" wide mounting, laminator and encapsulator offering industrial performance at exceptional value. With fully adjustable temperature, speed and pressure settings the 62 Pro is ideal for the more experienced finisher requiring a highly versatile laminator.

The SEAL 62 Pro Series is capable of running a wider range of media and can generate higher process speeds, which make this range of machines ideal for businesses that are looking to build in extra capacity and more versatility. A perfect fit for owners of lower-end manual pressure laminators, looking to upgrade to a professional production machine.

Capable of mounting, laminating and encapsulating prints up to 61" (1550mm), this series of machines can be used with the extensive range of SEAL laminating films, adhesives and substrates. The SEAL 62 Pro Series features unique design elements such as the combi-material shafts which maximize versatility and minimize waste without compromising its user-friendly nature. Real features with real value will lead your finishing department to say "WOW!"

The 62 Pro is ideal for producing a wide variety of applications:

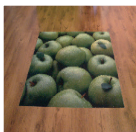
Rigid Indoor Displays



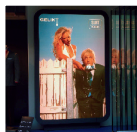
Flexible Indoor Displays



Floor Graphics



Backlit Displays



Pop-Up Displays



Rigid Outdoor Displays



The SEAL 62 Pro provides the following features:

Optimum performance

- Adjustable settings for increased capacity and versatility
- Manual nip-adjustment for precise operation
- 1 1/2" (938mm) nip opening for processing a wide range of substrates
- Fast processing speeds - up to 20ft (6m) / minute
- Superior roller technology for better processing of soft substrates
- 14.28 lbf/in (2.5n/mm) line pressure for superior cold lamination

Ease of use

- Ergonomic touch pad control panel
- High release silicone rollers for easy cleaning
- Light weight drop-in supply shafts with auto-grip for easy loading of materials in tight spaces
- Exclusive 'stay-put' swing up feed table keeps table up, making media handling and set-up a snap
- Simple film tension adjustment
- Auto-grip upper take-up shaft for winding release liners
- Roll-to-roll operation (from bottom unwind)

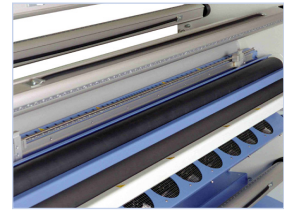
Safety

- Foot switch for hands free operation
- Comprehensive safety system with self-checking safety eyes and emergency stops
- ETL Certified Pro S Model (US & Canada)
- CSA Certified Pro D Model (US & Canada)

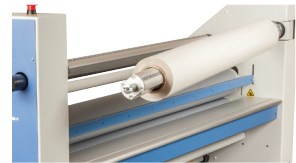
Technical Specifications

	SEAL 62 Pro D	SEAL 62 Pro S
Maximum Working Width	61" (1550 mm)	61" (1550 mm)
Maximum Speed	20'/min. (6 m/min.)	20'/min. (6 m/min.)
Maximum Substrate Thickness	1 1/2" (38 mm)	1 1/2" (38 mm)
Maximum Roller Temperature	284°F (140°C)	284°F (140°C)
Roller Diameter	5.2"	5.2"
Roller Heating	Dual (Top/Bottom)	Single (Top)
Maximum Roll Diameter	12"	12"
Maximum Roll Weight	132.2 lbs	132.2 lbs
Dimensions	Width	87.4" (2220 mm)
	Height	56.3" (1430 mm)
	Depth	17.7" (450 mm)
Net Weight	994 lbs (450 kg)	850 lbs (386 kg)
Shipping Dimensions	Width	89.8" (2280 mm)
	Height	66" (1676 mm)
	Depth	38" (965 mm)
Shipping Weight	1410 lbs (639 kg)	1260 lbs (571 kg)
Electrical Requirements	1N/PE 230VAC +/-10%	1N/PE 230VAC +/-10%
	50/60 Hz, 35A	50/60 Hz, 16A
Item Number	64138	64296
Pro D with Productivity Package	64727	n/a
includes factory installed easy in-feed table, out-feed slitters & fans		
Optional Equipment		
Slitter	64352	n/a
Fan Bank	643540	n/a
Roll Trough	64355	64355

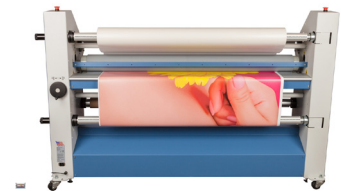
Flip-up pull rollers (62 Pro D)



Cantilevered Supply Shaft (62 Pro S)



Roll-to-roll laminating for vehicle wraps and high volumes




 ACCO Brands
 Four Corporate Drive
 Lake Zurich, IL 60047-8997
 In USA call 800-222-6462
www.acco.com

Contact your local distributor:

MyBinding.com
 5500 NE Moore Court
 Hillsboro, OR 97124
 Toll Free: 1-800-944-4573
 Local: 503-640-5920