

Safety Speed Kronos 60" General Purpose Cutter - 4032

Instruction Manual



Provided by

MyBinding.com
When Image Matters.

Call Us at 1-800-944-4573



MyBinding.com
 5500 NE Moore Court
 Hillsboro, OR 97124
 Toll Free: 1-800-944-4573
 Local: 503-640-5920

INSTRUCTIONS FOR:

KRONOS General purpose cutter

Models: 4030,31,32,33,34,35

Thank you for purchasing a SSM product. Manufactured to a high standard this product will, if used according to these instructions and properly maintained, give you years of trouble free performance



IMPORTANT: PLEASE READ THESE INSTRUCTIONS CAREFULLY. NOTE THE SAFE OPERATIONAL REQUIREMENTS, WARNINGS & CAUTIONS. USE THE PRODUCT CORRECTLY AND WITH CARE FOR THE PURPOSE FOR WHICH IT WAS INTENDED. FAILURE TO DO SO MAY CAUSE DAMAGE OR PERSONAL INJURY, AND WILL INVALIDATE THE WARRANTY.

PLEASE KEEP INSTRUCTIONS SAFE FOR FUTURE USE. ONLY LIFT OR MOVE THE KRONOS GENERAL PURPOSE CUTTER USING THE BASEBOARD. ONLY RAISE THE CUTTER RAIL USING THE CIRCULAR GRIP ON THE TOP OF RAIL. IF YOU NEED TO HANDLE THE CUTTER IN ANY OTHER WAY, THE BLADE MUST BE REMOVED FIRST.

1. CONTENTS

After unpacking the KRONOS General purpose cutter, check to make sure that you have all the parts and that there is no damage to the machine.

1.1 KRONOS General purpose cutter components:

Cutter and cutting head already assembled	One (1) blade cartridge	Box of 100 utility blades
One (1) scoring blades	One (1) textile blade cartridge	One (1) textile blades
One (1) allen key (2mm)		

2. OPERATION

- 2.1 It is important that the KRONOS General purpose cutter is used on a flat surface. A warped or bowed table will distort the base extrusion and induce a twist in the rail, resulting in a curved cut.
- 2.2 With the rail in the upright position, loosen the **BLADE CLAMP THUMB SCREW** (See 1 below) and insert a cartridge. The utility blade and scoring blade cartridges are inserted from the rear of the holder (See 2 below), the textile blade cartridge is inserted from the front (See 3 below).
- 2.3 **UTILITY BLADE** - The utility blade can be located in any one of 4 positions depending on the thickness of material being cut (See 4 below). Fine adjustment can be carried out by undoing the **BLADE CLAMP THUMB SCREW** (See 1 below) and moving the cartridge itself.
 To cut lightweight materials, place your right hand on the cutter head, depress the cutter and pull the cutting head towards you (See 8 below). To cut heavyweight materials, place your left hand on the circular grip and apply downward pressure, place your right hand on the cutter head, depress the cutter with the palm of your hand and push away from you to cut (See 9 below). Multiple passes may be needed for thicker materials.
SCORING BLADE - The scoring blade should be located in the cartridge as shown in 5 below. To score fracture sensitive plastics such as acrylic use the same technique as used for cutting heavyweight materials (see above). To break, move the material so that the score line runs along the front edge of the table and using the cutter as a clamp, apply downward pressure to the overhanging plastic to break. (SAFETY GLASSES AND GLOVES SHOULD BE WORN)
TEXTILE BLADE - To cut, use the same technique as used for cutting lightweight materials (see above). A piece of sacrificial material will be required when using this cutter. We recommend a cutting mat or other suitable plastic. Blades can be replaced by undoing the knurled brass knob on the rear of the unit.

3. GENERAL MAINTENANCE

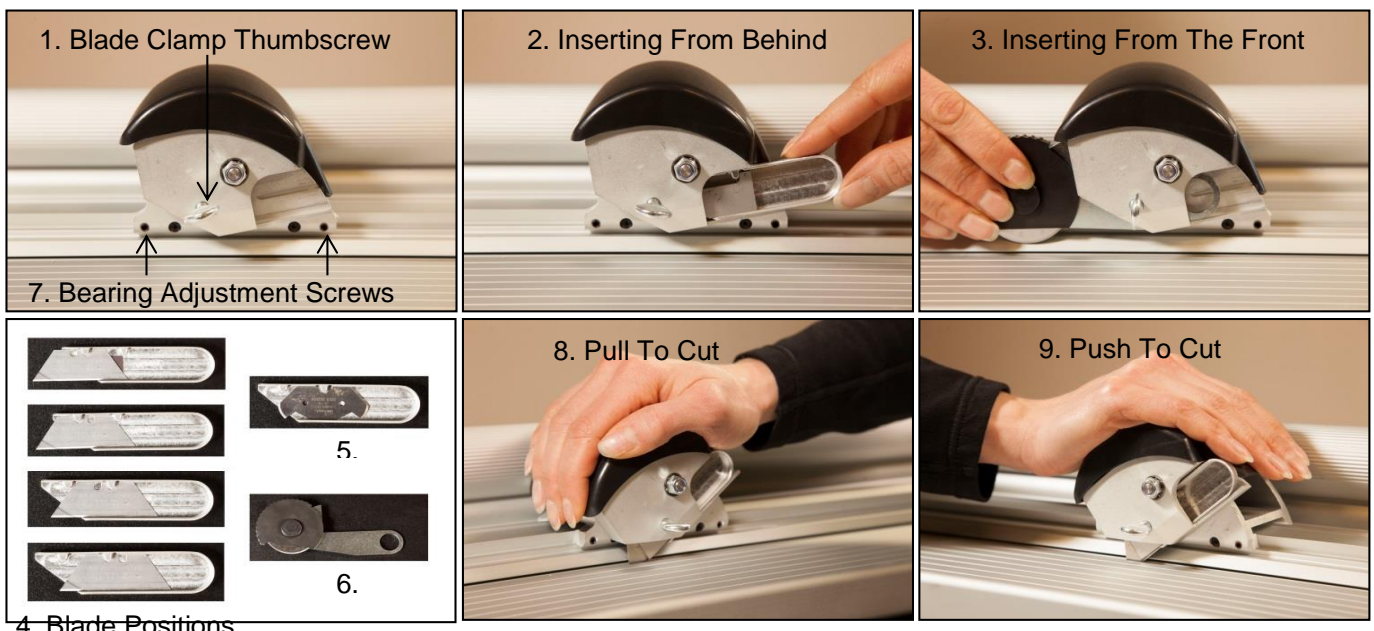
- 3.1 Regularly clean the KRONOS General purpose cutter using a dry cloth, stubborn stains can be removed with a cloth dampened with a little water/detergent.
- 3.2 Silicon spray can be used to lubricate the cutting head slideway. NEVER USE OIL OR SPIRITS TO LUBRICATE OR CLEAN THE EUROPA CUTTER RAIL, SOME OF THE PLASTIC COMPONENTS AND BEARINGS MAY BE DAMAGED.

4. ADJUSTING THE CUTTING HEAD BEARINGS

- 4.1 The bearings used to control the **CUTTING HEAD** are made from a high quality polymer and under normal use will last for an extremely long time. As they settle into position you may find a slight amount of side play, this can be removed by tightening the two adjustment screws (See 7 below).

5. SPARE PARTS

- 5.1 Spare parts can be obtained by calling 763-755-1600



4. Blade Positions