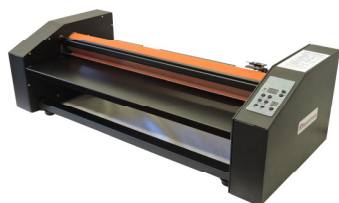
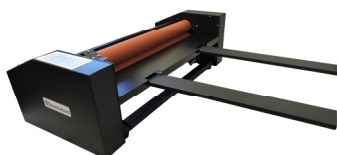


Smooth Mount LAMINATORS

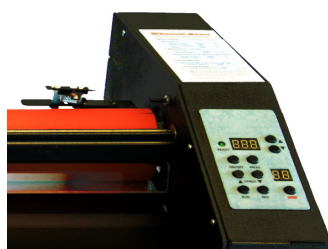
27"/40"/50" Pouch Board Laminators



Automatic Silicon Rollers



Rear Extension Legs



Digital Controls

Simply Superior Design

For improved productivity and ease of use

- **Rear Table Extension Legs improve Results and Productivity**

Boards exit unattended and safely cool flat (Patent pending)
Attach securely in seconds without tools
Store under laminator to save space when not in use

- **Variable Temperature and Speed**

Use with all pouch boards, mount boards, and cold boards
Reference guide on laminator for common applications
Speeds from one to five feet per minute
Temperatures from cold to 300°F

- **Spring Controlled Roller adjusts to Board Thickness**

Works automatically with boards up to 1/4" thick
Roller is silicon coated for easy cleaning

- **Digital Controls and Sensor**

Touchless infrared sensor monitors roll surface temperature
Digital display for both set and actual temperature

- **Safety Features**

Clear Safety Shield lets you view your work being processed
Fuses and adjustments accessed on the surface of the laminator

- **Uses standard 110V AC power**



Finished Board on Extensions



Videos

Specifications	27" Model	40" Model	50" Model
Dimensions	35"x15"x10"	48"x15"x10"	58"x15"x10"
Weight (net)	65 pounds	80 pounds	140 pounds
(shipping)	70 pounds	125 pounds	200 pounds
Roller Width	28" wide	41" wide	51" wide
Roller Diameter	2.5"	2.5"	3"
Power Requirement	110V / 12amp	110V / 12 amp	110V / 17 amp
Ships Via	UPS/FedEx	Truck	Truck
Item Number	PBML2725	PBML4025	PBML5030

Easy to Use



*Place print in MountCor Board,
Pouch Board or Film Sheets*



*Insert board into the
Smooth Mount Laminator*



*Print exits the Laminator
Finished and ready to display*