

Akiles Finish @ Coil E1 Electric Coil Inserter with Electric Crimper

Instruction Manual



Provided by
MyBinding.com
When Image Matters.

Call Us at 1-800-944-4573

Finish@Coil-E1 OPERATIONAL MANUAL

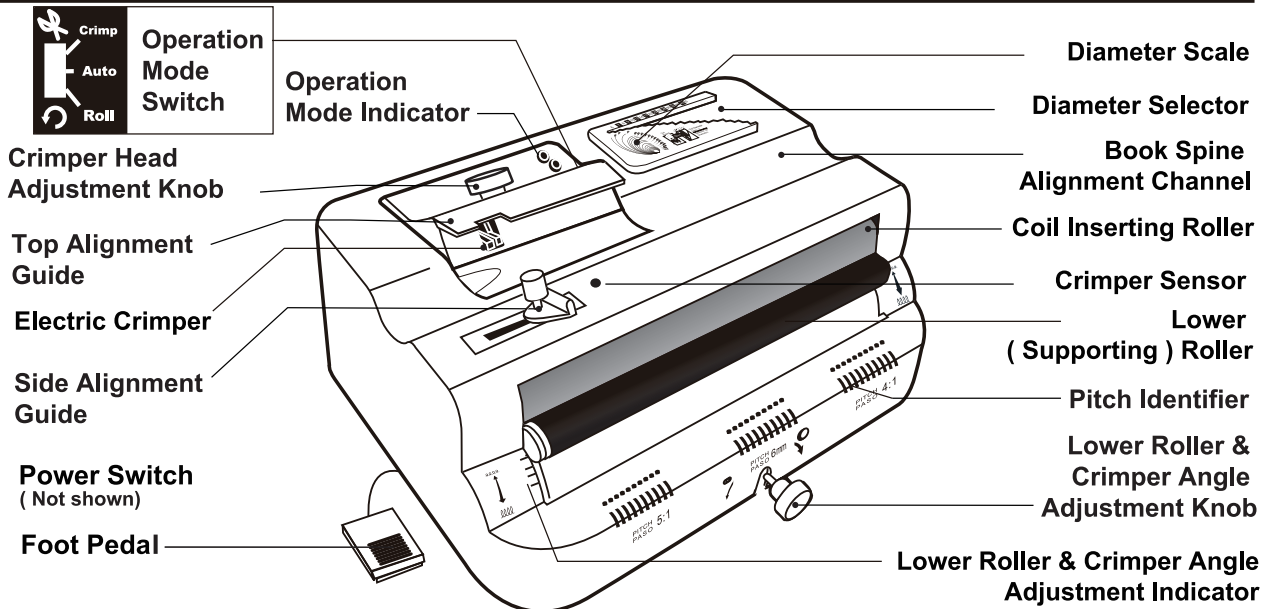
INTRODUCTION

CONGRATULATIONS ON THE PURCHASE OF YOUR NEW **Finish@Coil-E1**. A PROFESSIONAL AND EFFICIENT COIL BINDING MACHINE. YOUR **Finish@Coil-E1** WAS CAREFULLY DESIGNED WITH A FULL RANGE OF FUNCTIONS AND PREMIUM QUALITY COMPONENTS TO GUARANTEE AN EFFORTLESS AND PROFESSIONAL BIND, AS WELL AS MANY YEARS OF TROUBLE-FREE SERVICE.

IMPORTANT

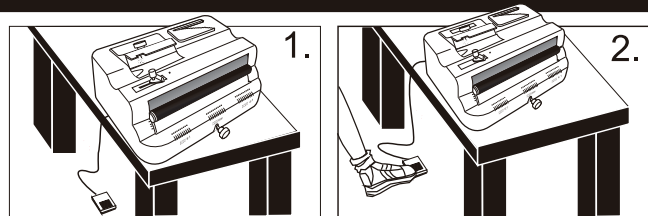
WE RECOMMEND THAT YOU TAKE A FEW MINUTES TO FAMILIARIZE YOURSELF WITH THE FUNCTIONS OF YOUR NEW **Finish@Coil-E1**. YOU WILL FIND THAT WITH JUST A LITTLE PRACTICE, ANYONE CAN ACHIEVE PROFESSIONAL RESULTS.

FEATURES



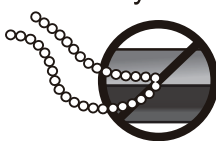
ASSEMBLY

1. Place your new **Finish@Coil-E1** on top of a sturdy working table. See picture 1
2. Turn on switch and press foot pedal to test inserting roller. See picture 2.



SAFETY INSTRUCTIONS

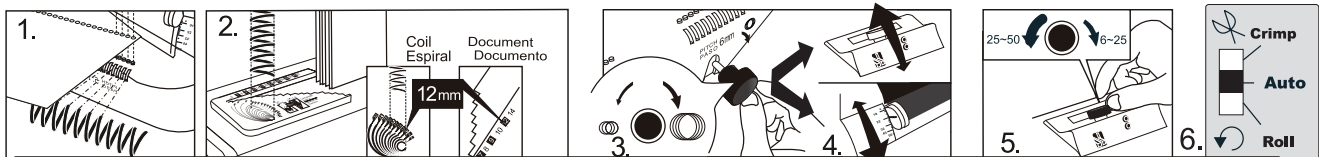
1. Keep fingers, hair, jewelry, necktie and any loose clothing or objects away from roller, as they may be accidentally pulled into the roller.
2. Do not allow children to operate the machine. The **Finish@Coil-E1** is not a toy.
3. Always turn switch-off and place foot pedal out of reach when machine is not in use.
4. To reduce the risk of electric shock, never operate the **Finish@Coil-E1** near water.
5. Do not use the **Finish@Coil-E1** if power cord is damaged.
6. Do not allow the electric cord to be in contact with hot surfaces.
7. In case of malfunction, return the unit to you distributor for service. This equipment does not contain any part that can be serviced by the consumer or operator.



PRE - INSERTION

OPTIONAL STEPS:

1. Use Pitch Identifier function to verify that the coil pitch matches that of the punched document. **See picture 1**
2. Place to-be-bound document into Coil Diameter Selector to best select the correct coil diameter size.
3. Align coil to Diameter Scale, to verify that the coil size is what you require. **See picture 2**
4. Turn the Lower Roller Adjustment Knob to adjust and select the best Lower Roller position and crimper angle for your coil size. **See picture 3 & 4**
5. Turn Crimper Adjustment Knob clockwise/counter-clockwise according to your coil size in order to choose a suitable coil clearance for cutting. **See picture 5**
6. Choose the function you need from Operation Mode Switch (check Operation Mode Indicator before pressing foot pedal). **See picture 6**
7. When Operation Mode Switch is set on 'AUTO', the machine will automatically determine whether the operation should be set to "Roll" or to "CRIMP" by its built-in Crimper Sensor. When no booklet is present near Crimper Sensor, the Operation Mode is set to "Roll". When a booklet is placed on top of the Crimper Sensor, the operation is automatically switched to "CRIMP".
8. Operator can disable the "AUTO" operation mode anytime by setting the Operation Mode Switch to either "Roll" only or "CRIMP" only.

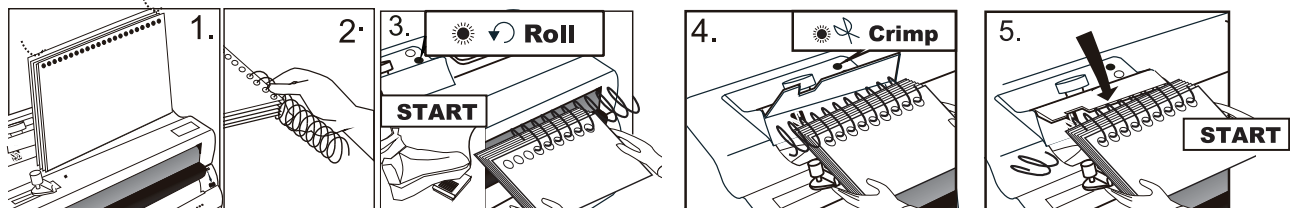


COIL INSERTING (BINDING)

1. Align punched document on Book Spine Alignment Channel. This feature is especially helpful for larger documents. **See picture 1**
2. Insert the coil into the first 4-5 holes by hand. **See picture 2**
3. Make sure Operation Mode is set to "Roll". Hold document evenly against roller (coil must slightly touch the roller). Press foot pedal. The coil will automatically move forward, inserting it self into the holes. **See picture 3.**
4. After the last hole insertion, IMMEDIATELY move document away from roller and/or stop pressing the foot pedal. Remark: if coil is over inserted or some pages are un-inserted, simply flip document over and proceed with insetion as per step 3.
5. When you want to crimp the coil, first place the booklet on top of machine, with the coil parallel to the Book Spine Alignment Channel & towards the Electric Crimper. Align the booklet towards the left (against the Left Alignment Guide) , then move the booklet towards the Electric Crimper. Make sure the Operation Mode Indicator is set on CRIMP. **See picture 4.**

REMARKS: It may be necessary to adjust the Left Alignment Guide so that the proper coil loop can be inserted into the Coil Crimper Head.

6. Push down Top Alignment Guide until it touches the coil, to lock the coil in place. Press Foot Pedal to crimp the coil. **See picture 5.**
7. Since the Left and Top Alignment Guides have already been set in Step 5 & 6, simply flip the booklet over and crimp the coil on the other side.



WARRANTY POLICY

YOUR **Finish @ Coil-E1** HAS A WARRANTY OF ONE YEAR FROM DATE OF PURCHASE IN THE EVENT OF A MANUFACTURER'S DEFECT. YOUR DISTRIBUTOR (AT OPTION) WILL PREPAIR OR REPLACE IT. IMPORTANT: THIS WARRANTY DOES NOT COVER DAMAGES DUE TO IMPROPER USE OR MIS TREATMENT OF THE UNIT. INCLUDING ANY EXTRAORDINARY EVENT LEADING TO THE DAMAGES OF THE MACHINE, WHETHER IT IS REVERSIBLE OR NOT.

IF THE **Finish @ Coil-E1** IS NOT WORKING PROPERLY, FIRST FOLLOW THE CORRECTIVE ACTION ABOVE. IF THE PROBLEM PERSISTS, PLEASE CONTACT YOUR DEALER FOR FURTHER INSTRUCTION. PLEASE HAVE YOUR MACHINE'S SERIAL NUMBER AND THE PURCHASE DATE READY. IF THE MACHINE MUCH BE RETURNED TO YOUR DISTRIBUTOR, IT IS YOUR RESPONSIBILITY TO PROPER PACK AND SHIP IT. AS ANY DAMAGES INCURRED DURING ITS TRANSPORTATION IS NOT COVERED BY OUR WARRANTY POLICY.