

Akiles i-Wire

Instruction Manual



Provided By

MyBinding.com®
When Image Matters.

iWire OPERATIONAL MANUAL

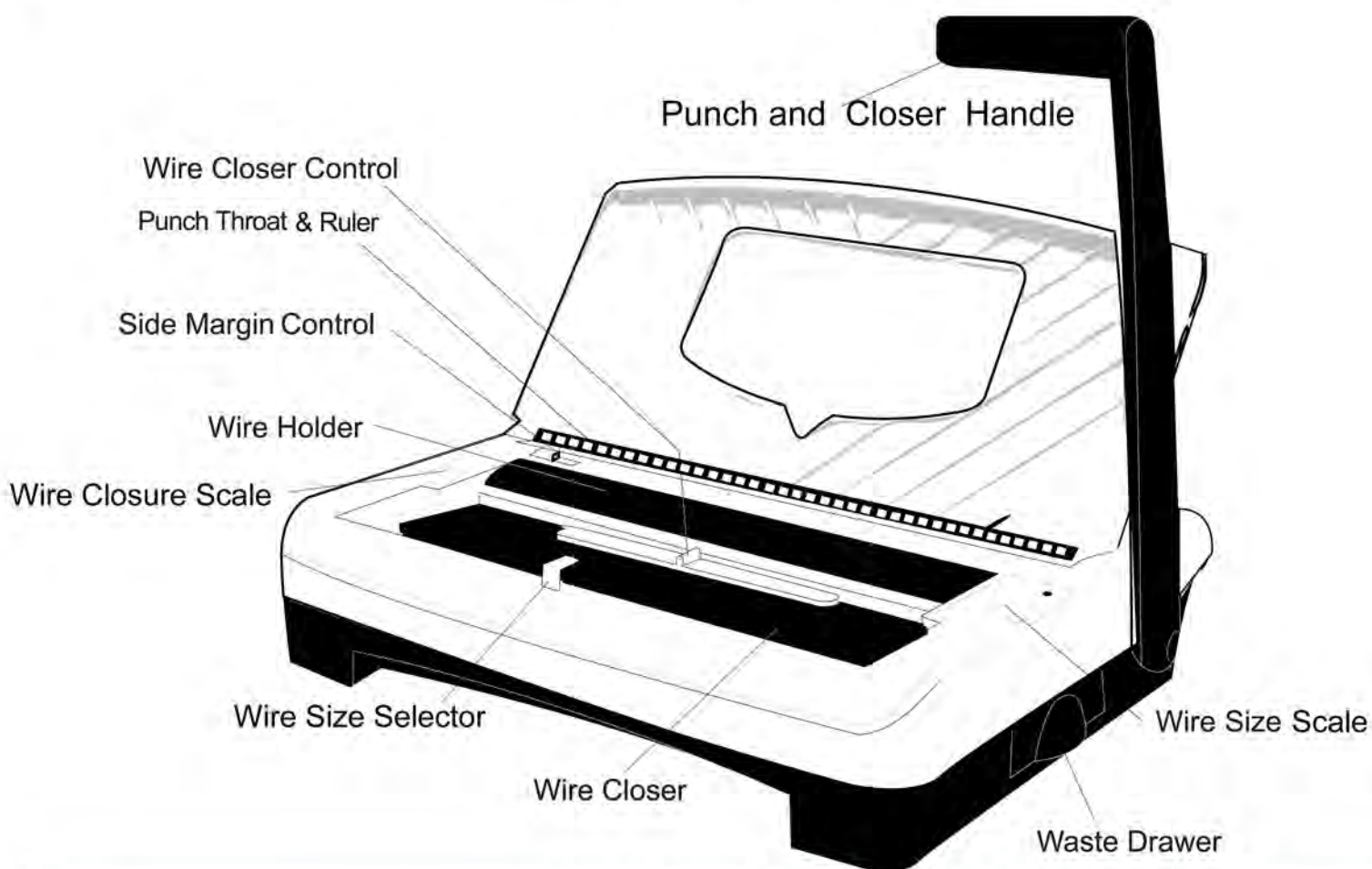
INTRODUCTION

CONGRATULATIONS ON THE PURCHASE OF YOUR NEW *iWire*, A MODERN, PRACTICAL AND RELIABLE PUNCH AND BINDING MACHINE FOR WIRE BINDING. YOUR *iWire* WAS DESIGNED WITH A FULL RANGE OF FUNCTIONS AND PREMIUM QUALITY COMPONENTS TO GUARANTEE AN EFFORTLESS AND PROFESSIONAL BIND AS WELL AS MANY YEARS OF TROUBLE-FREE SERVICE.

IMPORTANT

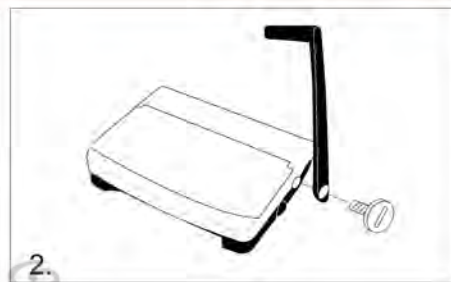
WE RECOMMEND THAT YOU TAKE A FEW MINUTES TO FAMILIARIZE YOURSELF WITH THE FUNCTIONS OF YOUR NEW *iWire*. YOU WILL FIND THAT WITH JUST A LITTLE PRACTICE, ANY PERSON CAN ACHIEVE PROFESSIONAL RESULTS.

FEATURES



ASSEMBLY

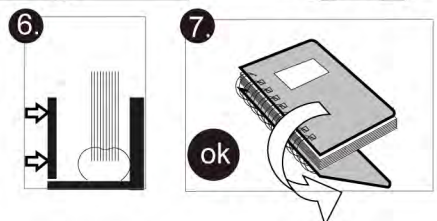
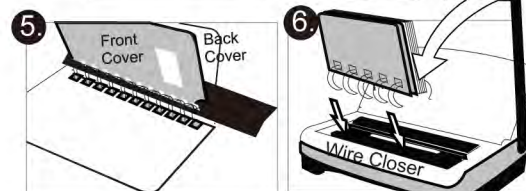
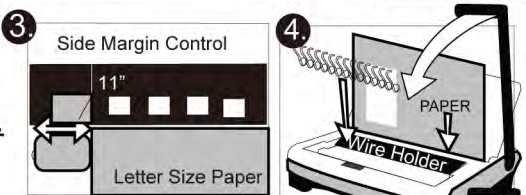
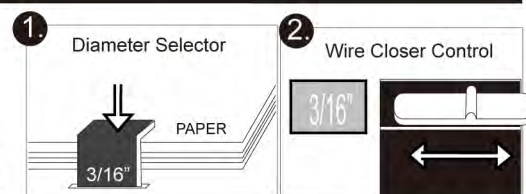
1. Place your new *iWire* on top of a sturdy work table.
2. Remove the screw from punch axle counter clockwise as indicated, connect the punch handle in a vertical position onto the punch axle. Tighten-back the screw clockwise.



WIRE BINDING

SET-UP INSTRUCTIONS (STEPS 1-4a)

- 1) Based on document thickness you must first determine the optimal wire diameter size needed. To do this, insert your full unbound document into the Diameter Selector. See picture 1
- 2) Next, based on the selected wire diameter size, pre-set the Wire Closer opening. To do so, slide the Wire Closer Control to the matching wire diameter size on window. See picture 2.
- 3) Based on document length, you must now adjust the side margin for an evenly centered punch. To do so, press and slide Side Margin Control. See Picture 3.



- Hint:** We recommend for you to test punch some waste paper and readjust the Side Margin Control as needed.
- 4a) Insert selected wire element into wire holder. Doing so will allow for easier insertion of sheets after each punch. See picture 4

PUNCHING & CLOSING (STEPS 4b-7)

- 4b) Insert sheets and pull handle forward to punch. See picture 4
Important: Make sure sheets are fully inserted and slid against the side margin.
- 5) Insert pages into wire element as shown. See picture 5
Hint: Insert document pages facing up from last to first, then insert front cover, then insert back cover (inside of back cover should be facing up).
- 6a) Release the wire element along with your inserted sheets from the wire holder. Place document to be bound inside wire closer with the opening of the wire element facing down. See picture 6
- 6b) Pull handle forward to close. See picture 6
- 7) Remove bound book & flip back cover to close book. See picture 7

TECHNICAL INFORMATION

Size	Wire 3 : 1 (3 HOLES PER INCH)	Wire 2 : 1 (2 HOLES PER INCH)
	■ ■ ■ ■	■ ■ ■
Binding Format	11" = 32 Holes	11" = 21 Holes
	8.5" = 25 Holes	8.5" = 17 Holes
	A4 = 34 Holes	A4 = 23 Holes
	A5 = 25 Holes	A5 = 16 Holes

Capacity & Diameter					
Sheets (20 lbs)	Diameter Inch	mm	Sheets (20 lbs)	Diameter Inch	mm
WIRE 3:1			WIRE 2:1		
20	3/16	4.5	140	5/8	16
30	1/4	6	160	3/4	20
50	5/16	8	190	7/8	22
60	3/8	9	220	1	25
80	7/16	10	280	1-1/4	32
100	1/2	12			
120	9/16	15			

WARRANTY POLICY

YOUR iWire HAS A WARRANTY OF ONE YEAR FROM DATE OF PURCHASE. IN THE EVENT OF A MANUFACTURER'S DEFECT, YOUR DISTRIBUTOR (AT OPTION) WILL REPAIR OR REPLACE IT. IMPORTANT: THIS WARRANTY DOES NOT COVER DAMAGES DUE TO IMPROPER USE OR MISS TREATMENT OF THE UNIT, INCLUDING ANY EXTRAORDINARY EVENT LEADING TO THE DAMAGE OF THE MACHINE, WHETHER IT IS REVERSIBLE OR NOT.

IF THE iWire IS NOT WORKING PROPERLY, FIRST FOLLOW THE CORRECTIVE ACTIONS ABOVE. IF THE PROBLEM PERSISTS, PLEASE CONTACT YOUR DEALER FOR FURTHER INSTRUCTIONS. PLEASE HAVE YOUR MACHINE'S SERIAL NUMBER AND THE PURCHASE DATE READY. IF THE MACHINE MUST BE RETURNED TO YOUR DISTRIBUTOR, IT IS YOUR RESPONSIBILITY TO PROPERLY PACK AND SHIP IT, AS ANY DAMAGES INCURRED DURING ITS TRANSPORTATION ARE NOT COVERED BY OUR WARRANTY POLICY.