

Best-Rite 18" x 24" Fabric Add-Cork Bulletin Board Tackboard

Product Spec Sheet



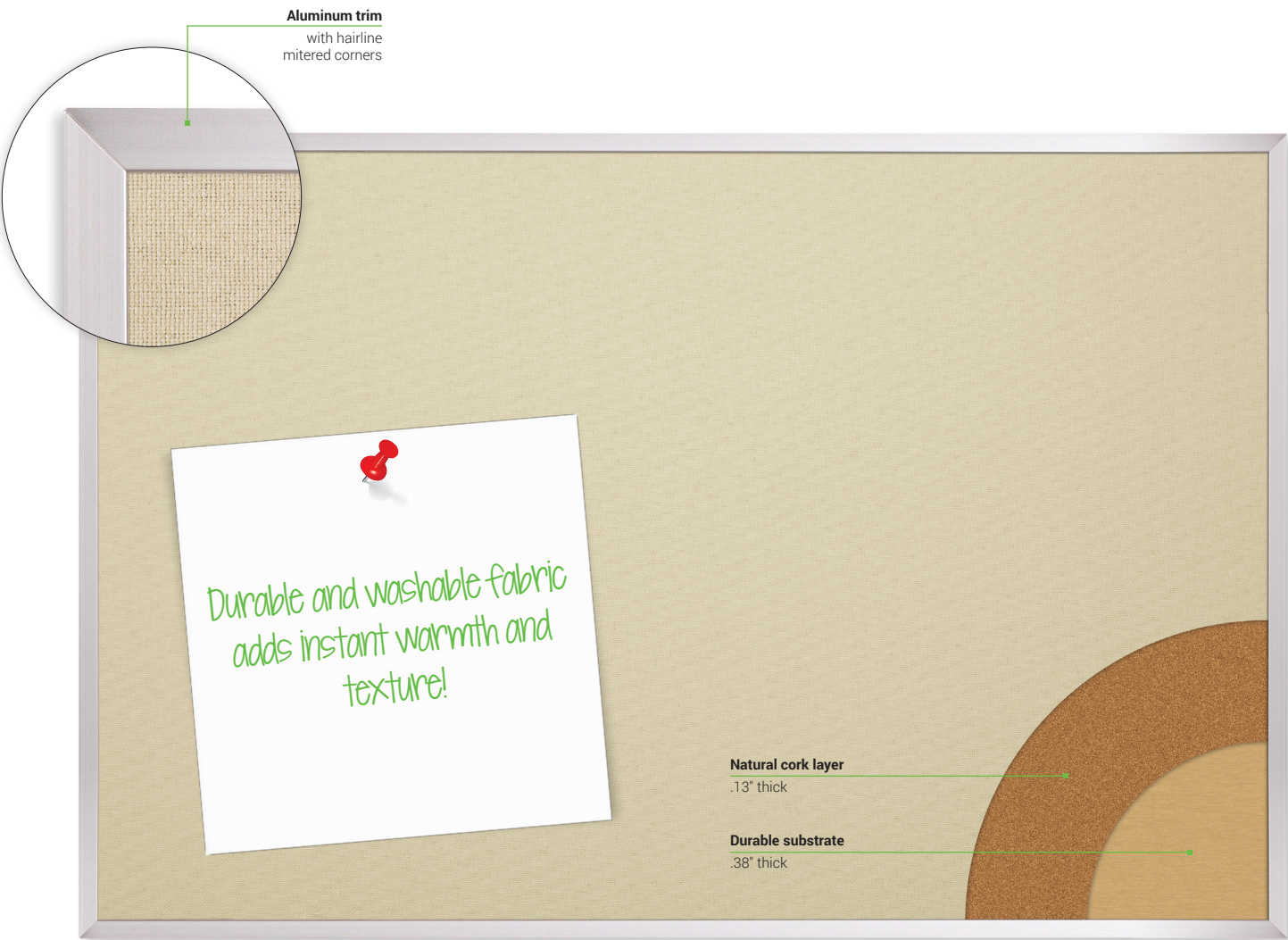
Provided by

MyBinding.com
When Image Matters.

Call Us at 1-800-944-4573

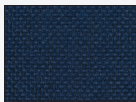
Fabric Add-Cork Tackboard

with Aluminum Trim





33 - Nutmeg



35 - Indigo



36 - Granite

Fabric Add-Cork Tackboard - Aluminum Trim

- Durable and non-fraying fabric over an Add-Cork substrate creates an economical and attractive tackboard.
- Polyolefin fabric is washable and unaffected by most common household chemicals, salts, and cleansers. Fabric is also treated to resist the growth of stain- and odor-causing microbes, and is available in three colors.
- Add-Cork consists of .13" layer of natural cork bonded to .38" layer of rigid and durable substrate for added tack-holding power and durability.
- Featured with standard .88" clear anodized aluminum trim with hairline mitered corners. Anodized black aluminum trim available at an upcharge.
- TAA compliant. Manufactured in the US of foreign and domestic materials. Ten year limited warranty.

Fabric Add-Cork Technical Information

- Fabric consists of 100% woven Polyolefin with a latex backing.
- Tested by an independent laboratory against standards for upholstery fabrics set by the National Association of Furniture Manufacturers.
- Washable and unaffected by most household chemicals, salts, and cleansers.
- A waterproof resin glue bonds the fabric to a .13" natural cork layer, which is permanently adhered to a .38" rigid and durable substrate.
- Vacuuming or light brushing is recommended to prevent dust and soil build up.
- Custom sizes are available.

Part No.	Product Dimensions	Ship Wt.
Fabric Add-Cork Tackboard - Aluminum Trim		
332AA*	1.5'H x 2'W	6 lbs
332AB*	2'H x 3'W	12 lbs
332AC**	3'H x 4'W	20 lbs
332AD	4'H x 4'W	39 lbs
332AF	4'H x 5'W	46 lbs
332AG	4'H x 6'W	49 lbs
332AH	4'H x 8'W	64 lbs
332AK	4'H x 10'W	71 lbs
332AM	4'H x 12'W	104 lbs

*Ships UPS **Ships UPS OS1 *Available while supplies last
Shipping weights are listed on a per item basis and may vary based on quantities ordered. All boards listed as 3'H x 4'W actually measure 33.75"H x 48"W due to shipping restrictions.

