

BEST-RITE®

“It’s A Better Board”

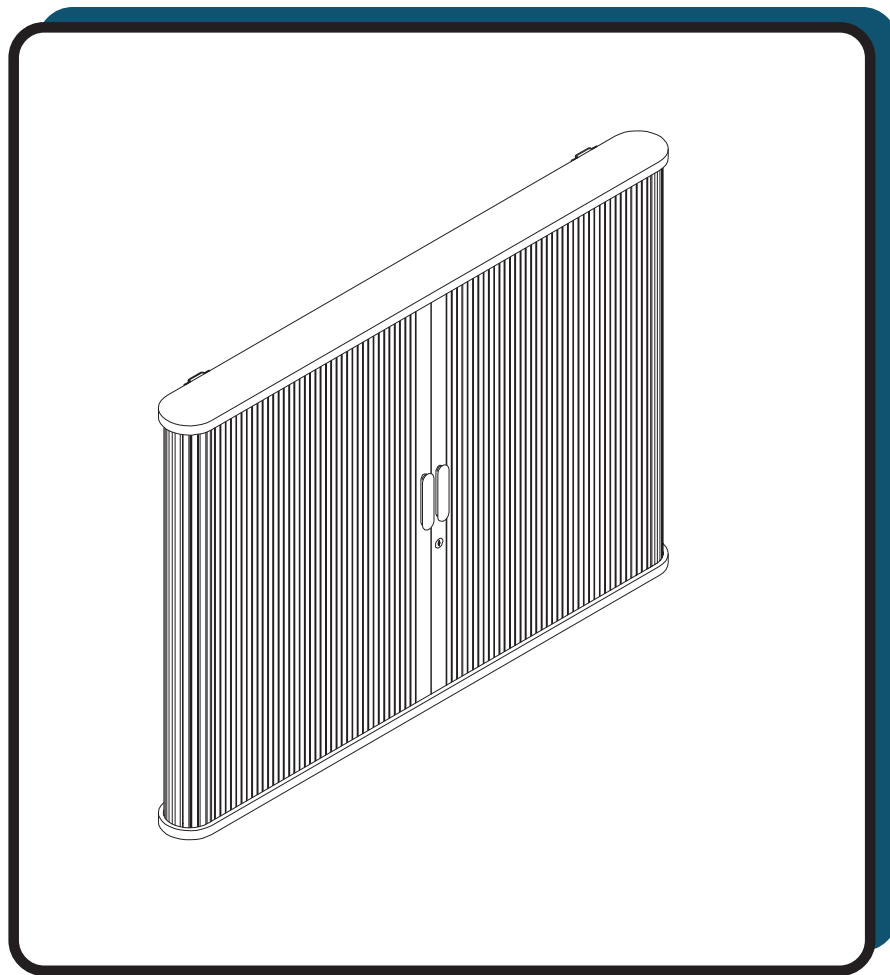
Since 1960

www.bestrite.com

Tambour Door Cabinets

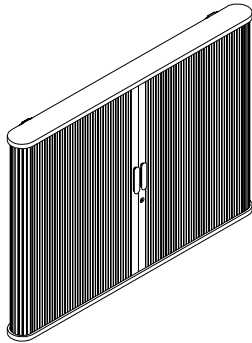
843-O 843-C BLT-28060 BLT-25010

Enclosed magnetic marker board


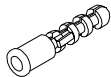





Assembly Instructions

Tambour Door Cabinet (Enclosed marker surface)

Part	Drawing	Description	Qty
P-1		Enclosed Marker Board Cabinet	1 EA

Hardware List

A		Bracket	1 EA
B		Screw Anchor	5 EA
C		Long Screw	5 EA
D		Short Screw	1 EA
E		Key	1 EA

Missing Parts or UPS Damaged Parts
 For Your Convenience you can
 EMAIL us at
boards@bestrite.com
 24HOURS 7 DAYS A WEEK

Should you require assistance
 during assembly, please call our
 Customer Service Department
 Monday - Friday 8 a.m. - 5 p.m.
 Central Standard Time
 Toll-Free Customer Service
 1-800-749-2258

Tambour Door Cabinet Assembly Instructions

READ THROUGH INSTRUCTIONS FROM BEGINNING TO END BEFORE STARTING TO ASSEMBLE UNIT.

To Assemble:

1. Identify and Separate all the Parts and Hardware.
2. Find the desired location for this unit on wall. Use dimensions showing in illustration # 1 to drill holes for Anchor Screws (B) Suggested location for these holes are in wall studs. Insert the Anchor Screws in to the holes and insert the Long Screws (C) in to only four of the Anchor Screws with head of the screws be approximate 1/4" a way from the wall. See illustration 1.

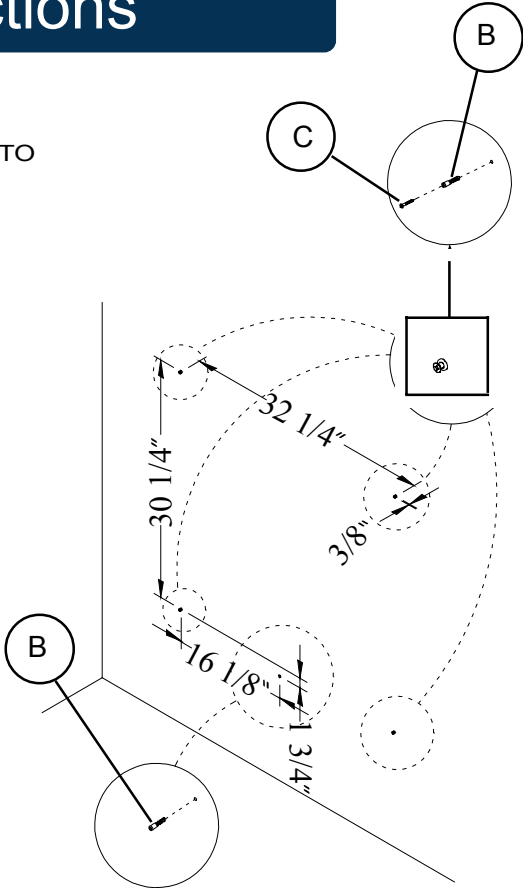


Illustration # 1

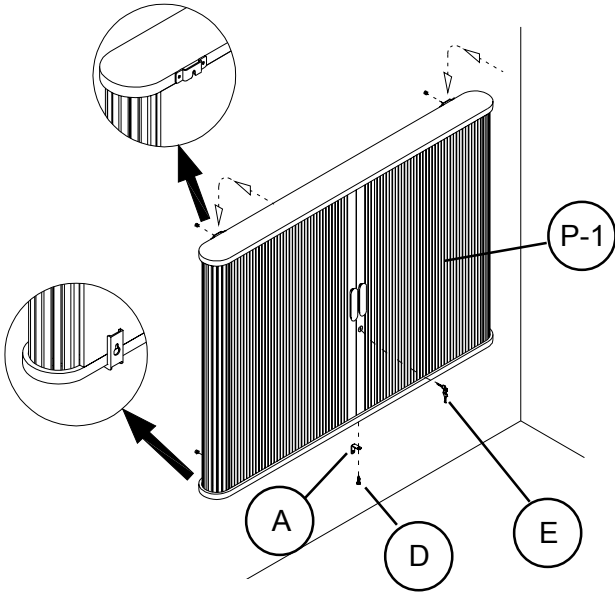


Illustration # 2

3. Hang Tambour Door Cabinet (P-1) on the head of the four Long Screws on the wall. To secure the this unit Use the Bracket (A) over the Anchor Screw you have already inserted in the wall at the bottom and fasten the Bracket (A) with Long Screw (C). To secure the this unit use the Small Screw (D) to fasten the Bracket (A) to the bottom of Enclosed Marker Board Cabinet (P-1). See illustrations # 2.