

# ***Daige Maxit 12.5"*** ***Adhesive Coater - MX12***

## Instruction Manual



*Provided by*

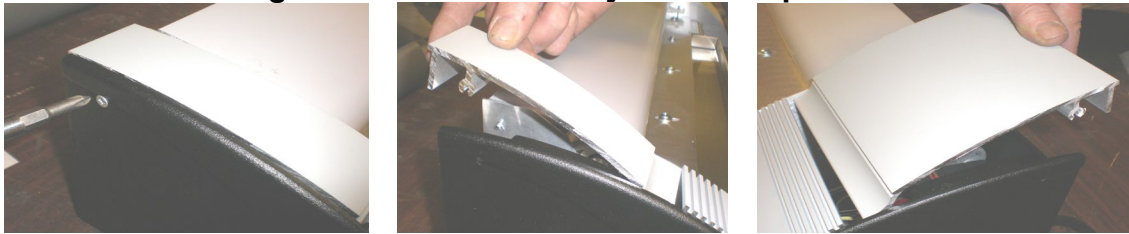
**MyBinding.com**  
*When Image Matters.*

Call Us at 1-800-944-4573

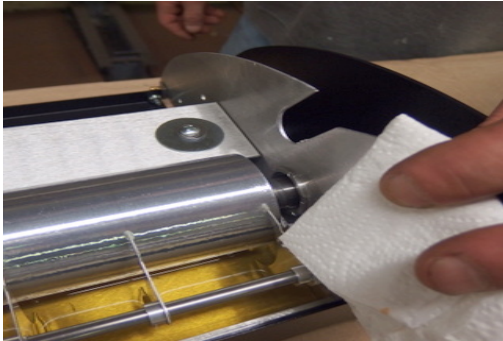
# Changing Maxit Adhesive

**Note: after you remove the adhesive as shown below, you do not need to get out every bit of adhesive from the tray. You can leave in a small amount of the residue. Also, you do not need to clean the coating roller.**

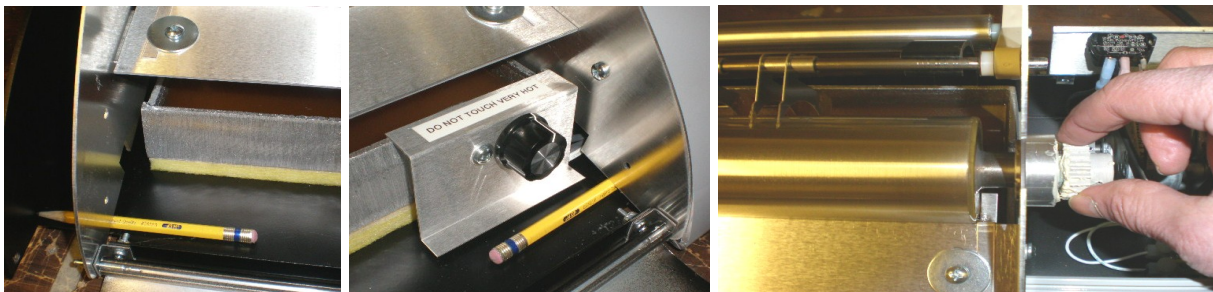
**Start the following after the Maxit is fully warmed up**



Remove the screws from the left and right side of the Maxit. Slide out the top left and top right sides of the covers.

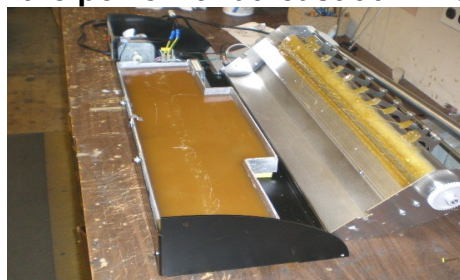
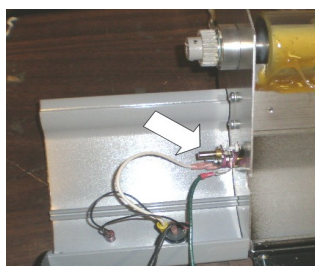
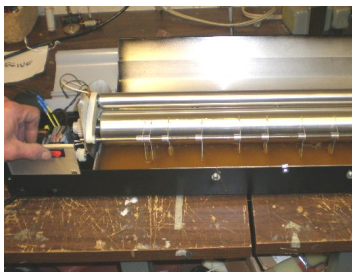


Using insulation, hold the back of the aluminum carriage walls and swivel up the assembly out of the adhesive towards the front.

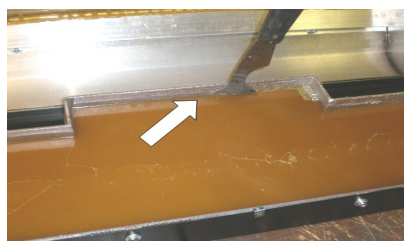


Place a pencil under the right and left carriage walls to keep the roller up out of the adhesive. Move the wiper blade as close as possible to the coating roller. Using the gear on the right, turn the coating roller a couple of revolutions to remove excess adhesive from the roller. Turn off the power and unplug the cord so the adhesive solidifies.

**Do the following the next day (or after turning off the power for at least 90 minutes)**



Turn the Maxit around so the back is facing the front of the table. (When you plug in the Maxit be very careful not to touch the live thermostat on the left) Plug in the Maxit and turn on the power for exactly 3 minutes, **then unplug the cord**. Swivel the coating roller away from the tray.



Take a putty knife and insert it along the front of the tray to separate the adhesive from the front side of the tray where there is less heat. Take the putty knife and insert it under one end of the adhesive and roll the adhesive towards the middle of the tray.

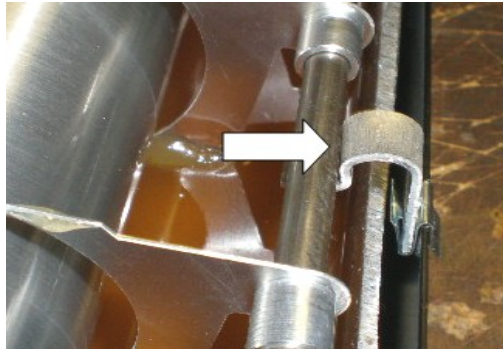
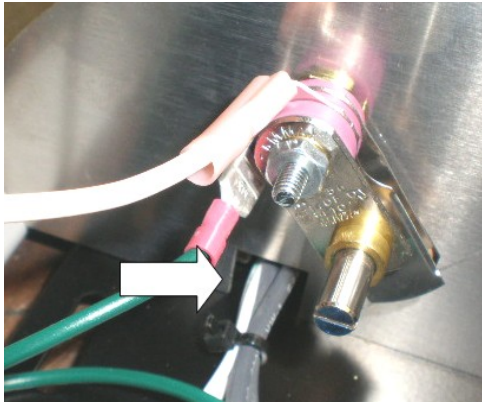


Go to the opposite end and do the same until all the adhesive is in the middle of the tray. Take your putty knife and lift it out of the tray.



Place the adhesive on a newspaper or board. The tray does not have to be perfectly clean, so you can leave in some residue. Refill the tray with the adhesive. Swivel the coating roller back down into the tray.





When you swivel the coating roller down into the tray, be sure the wiring goes through the square slot in the aluminum wall so the wall does not crush the wiring. Also make sure the rod support is in place. Plug it in and turn on the power. After the Maxit warms up, reset the wiper blade for the proper coating.