



Laminator

EXL 45-3

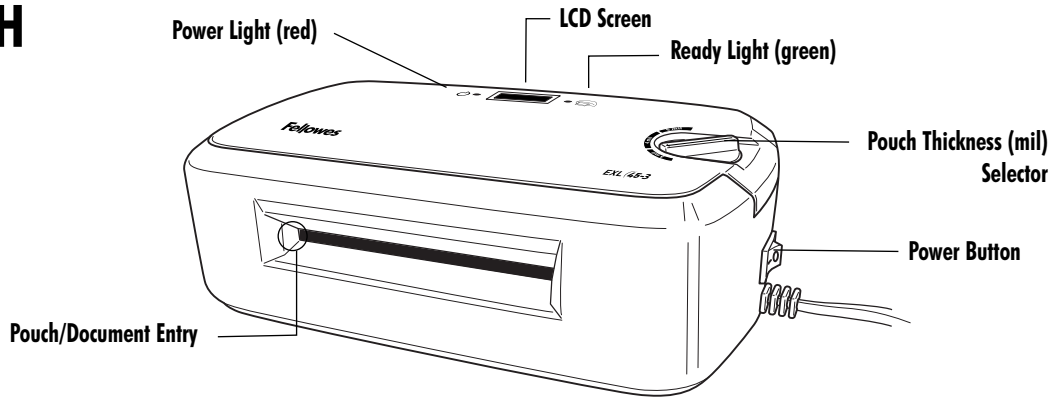


Please read these instructions before use.

Veillez lire ces instructions avant utilisation.

Lea estas instrucciones antes del uso.

ENGLISH



CAPABILITIES

Capacity

–Pouch width: Max. inches	4.5" (114.5mm)
–Pouch thickness: Min.-Max. mils	3-5
–Combined thickness: Max. millimeters inches	0.63 0.02
–Lamination speed	approx. 18"/min (fixed speed)
–Speed in minutes to: Warm-up to low heat Warm-up to high heat	4 5

IMPORTANT SAFETY INSTRUCTIONS — Read Before Using!

WARNING

- The socket-outlet shall be installed near the equipment and shall be easily accessible.
- To prevent electrical shock, do NOT use laminator close to water and do NOT spill water on laminator, electric cord, or wall socket.
- Do not leave electric cord in contact with a warm surface.
- Do not leave electric cord hanging from a cupboard or shelf.
- Do not use laminator if electric cord is damaged.
- Do not laminate metal objects.



CAUTION

- Only use pouches specifically designed for the lamination setting you intend to use.
- Always supervise children during laminator operation.
- Keep pets away from laminator while in use.
- Switch off and unplug laminator when not in use.
- Do not open or attempt to repair the laminator yourself, as this could result in electric shock and will void your warranty. Contact Customer Service if you have questions. Please note the warranty does not apply in cases of abuse, mishandling or unauthorized repair.

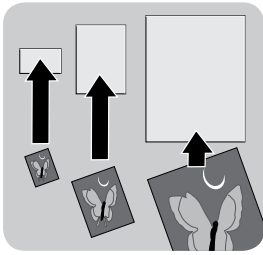
TIPS

- Always put item in a pouch. Never laminate an empty pouch.
- Trim excess pouch material from around your item after laminating and cooling.
- Before laminating valuable items, do a test run with an item similar in size and thickness.

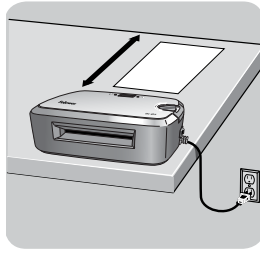
IMPORTANT SAFETY INFORMATION

This laminator is equipped with an Auto shut-off function. It will turn the laminator into stand-by mode, if it has not been used for over 15 minutes. To switch the laminator back on, turn the Power button off and then on.

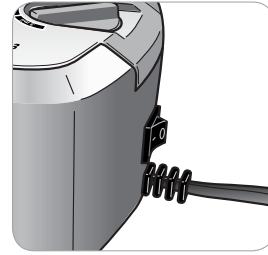
BEFORE YOU LAMINATE



Use Fellowes® brand pouches for best results. Select correct pouch size for laminated item.

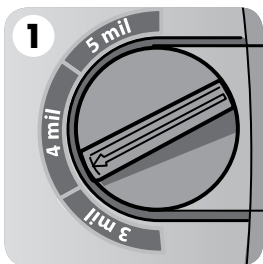


- Plug laminator into power outlet.
- Position laminator so you have enough space to allow items to pass freely through the machine.

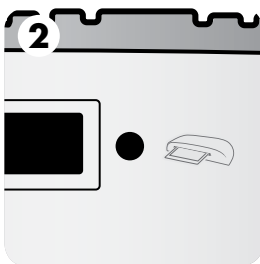


- Switch the power on. The red power light will turn on.

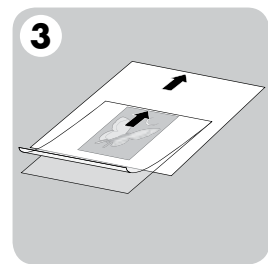
HOT LAMINATION STEPS



Use the dial to select required temperature (3, 4 or 5 mil)



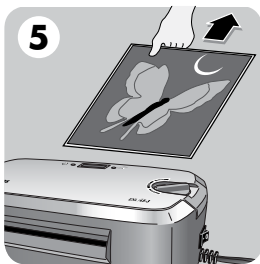
As laminator warms up, the LCD Screen will indicate progress. When the selected temperature is reached the green flashing light will turn solid.



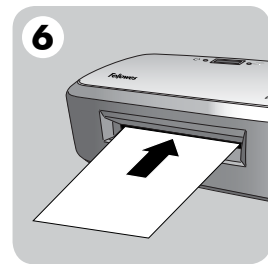
Place item inside pouch against the sealed edge. To prevent jamming, use a Support Sheet when item is smaller than the pouch.



Place pouch, sealed edge first, into laminator entry. Keep pouch straight and use the edge guide to center it.



To prevent jamming, immediately remove laminated item from back of machine. Let item cool on flat surface for several seconds.



Before switching off laminator, feed a piece of paper through machine to clean unit.

TROUBLESHOOTING

Problem	Cause	Solution
Ready Light does not go on after extended time.	Laminator is in a hot, humid area.	Move laminator to a cool dry area.
Pouch did not completely adhere to item.	Laminated item may be too thick.	Pass through laminator a second time.
Jamming	Laminated item was not immediately removed from machine.	Always remove item immediately after lamination.
	Pouch was not used.	Always put item in a pouch.
	Pouch was not centered or straight when fed through Pouch/Document Entry.	Align sealed edge with Pouch/Document Entry. Use guide to center.

Need Help?

Customer Service:

US: 1-800-945-4545

Canada: 1-800-665-4339

México: 1-800-234-1185

www.fellowes.com

Let our experts help you with a solution. Always call us first before contacting your place of purchase.

WARRANTY

Fellowes warrants all parts of the laminator to be free of defects in material and workmanship for 2 years from the date of purchase by the original consumer. If any part is found to be defective during the warranty period, your sole and exclusive remedy will be repair or replacement, at Fellowes' option and expense, of the defective part. This warranty does not apply in cases of abuse, mishandling or unauthorized repair. ANY IMPLIED WARRANTY, INCLUDING THAT OF MERCHANTABILITY OR FITNESS FOR A PARTICULAR PURPOSE, IS HEREBY LIMITED IN DURATION

TO THE APPROPRIATE WARRANTY PERIOD SET FORTH ABOVE. IN NO EVENT SHALL FELLOWES BE LIABLE FOR ANY CONSEQUENTIAL OR INCIDENTAL DAMAGES ATTRIBUTABLE TO THIS PRODUCT. This warranty gives you specific legal rights. You may have other legal rights that vary from this warranty. The duration, terms and conditions of this warranty are valid world-wide, except where different limitations, restrictions or conditions may be required by local law. For more details or to obtain services under this warranty, please contact us or your dealer.



Useful Phone Numbers

Help Line

Australia	+ 1-800-33-11-77
Canada	+ 1-800-665-4339
Europe	00-800-1810-1810

México	+ 1-800-234-1185
United States	+ 1-800-955-0959

Fellowes

Australia	+ 61-3-8336-9700
Benelux	+ 31-(0)-76-523-2090
Canada	+ 1-905-475-6320
Deutschland	+ 49-(0)-5131-49770
España	+ 304-902-33-5569
France	+ 33-(0)-1-78-64-91-00
Italia	+ 39-071-730041

Japan	+ 81-(0)-3-5496-2401
Korea	+ 82-(0)-2-3462-2884
Malaysia	+ 60-(0)-35122-1231
Polska	+ 48-(22)-205-21-00
Singapore	+ 65-6221-3811
United Kingdom	+ 44-(0)-1302-836836
United States	+ 1-630-893-1600



1789 Norwood Avenue, Itasca, Illinois 60143-1095 • USA • 630-893-1600

fellowes.com

Australia
Korea

Benelux
Poland

Canada
Russia

China
Singapore

France
South Africa

Germany
Spain

Italy
United Kingdom

Japan
United States