

8AD? 3 J

86 \$("

3 GFA? 3 F7 6

F3 4 4 7 D



Provided By

MyBinding.com
When Image Matters.



FD 260 Tabber shown with optional FD 260-10 Feeder and optional FD 260-20 Conveyor

The Formax **FD 260 Tabbing System** makes quick work of applying postal tabs to folded mailpieces. Using “crash tab” technology, the edge of the mailpiece is fed into the FD 260 where it contacts an adhesive tab and travels through a set of rollers where the tab is tightly folded and sealed, creating a mail-ready piece.

With postal regulations changing, having a dependable and efficient tabber can make your mailings compliant with very little effort. The **FD 260** provides a short paper path with no need for skewing adjustment, and high productivity because the short edge of the document feeds through the machine, increasing production rates at any given speed. Accuracy is also key, as the tabs fold tight to the edge of the piece, without drifting from left to right. The FD 260 tabs up to 15,000 pieces per hour, using a variety of tab stocks including clear, translucent and paper, in sizes from 1” to 1.5”, with a built-in waste take-up spool to reduce down time. Depending on document specifications, the mailpiece can be fed through in different directions, to apply tabs in various locations, as shown below.

With the addition of the optional **FD 260-10 Feeder**, operators can input a stack of up to 8” of material to be tabbed. Adjustable side guides prevent document skewing. The optional **FD 260-20 Conveyor** offers adjustable speed from 0 - 120 fpm, and stacks tabbed pieces in a neat, sequential order for easy removal.

Various Tabbing Positions



One Pass



Two Passes



Three Passes

FD 260 Tabber Specifications

Speed:	Tabs up to 15,000 pieces per hour
Tabs Applied:	1 tab per pass
Document Sizes:	5" to 12" wide
Document Thickness:	Up to 1/4" thick, coated or uncoated
Tab Varieties:	1" and 1.5" tabs, clear, translucent or paper, circles or rectangles, on rolls with or without tractor holes
Tab Roll Capacity:	Up to 5,000 1" tabs, up to 5,000 1.5" tabs
Dimensions:	10" L x 17" H x 21" W
Weight:	47 lbs
Power:	115V, 2A, 60Hz or 230V, 1A, 50Hz
Options:	FD 260-10 Feeder, FD 260-20 Conveyor
Features:	Built-in waste take-up spool



FD 260 Tabber

FD 260-10 Feeder Specifications

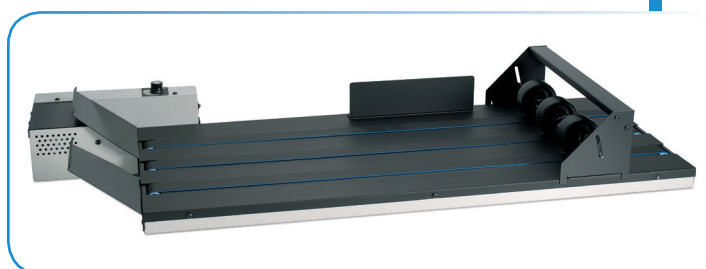
Speed:	Feeds up to 20,000 pieces per hour
Document Sizes:	5" to 18" wide, up to 14" long
Document Thickness:	Up to 3/8" thick
Hopper Capacity:	Stack height up to 8" with mail piece extensions
Dimensions:	23" L x 12.5" H x 16" W
Weight:	48 lbs
Power:	120V, 50-60Hz
Features:	Adjustable side guides to prevent document skewing



FD 260-10 Feeder

FD 260-20 Conveyor Specifications

Speed:	Adjustable, from 0 - 120 fpm
Document Sizes:	Up to 16" wide, unlimited length
Dimensions:	40" L x 5.5" H x 18.5" W
Weight:	40 lbs
Power:	115V, 2A, 60Hz or 230V, 1A, 50Hz
Features:	Weight wheel assembly included



FD 260-20 Conveyor

Formax - New Hampshire, USA
www.formax.com

Local Dealer: