

Fellowes Pulsar 300E Comb Binder

Instruction Manual



Provided By

MyBinding.com®
When Image Matters.



Office Comb Binder

Pulsar e 300

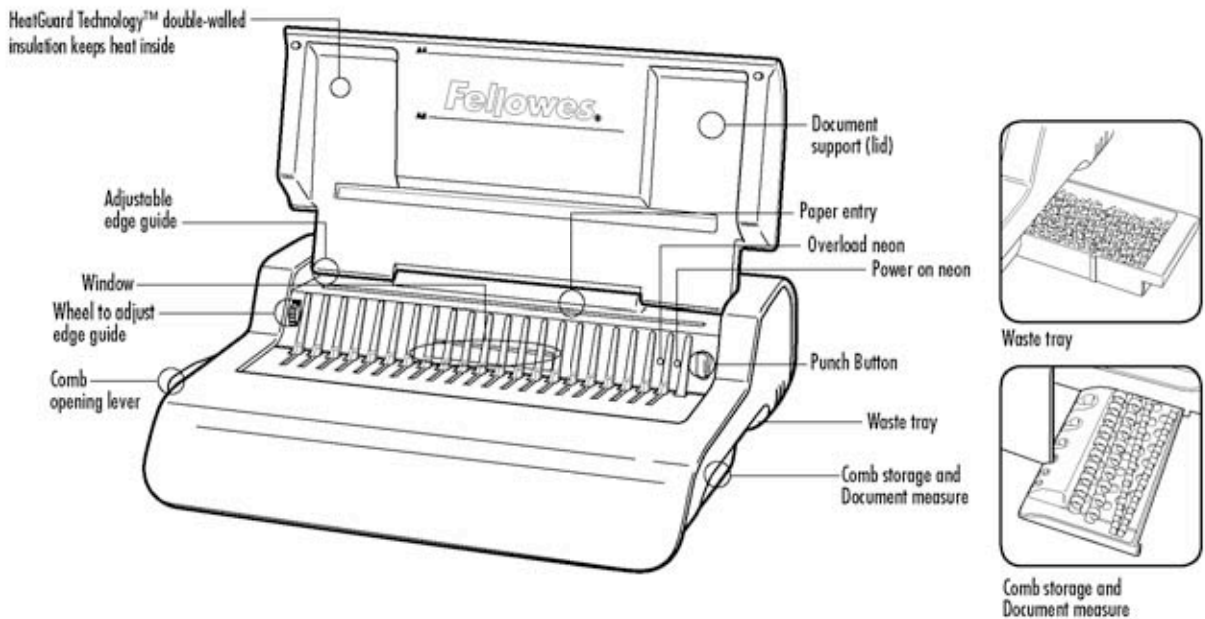


Please read these instructions before use.

Veuillez lire ces instructions avant utilisation.

Lea estas instrucciones antes del uso.

ENGLISH



CAPABILITIES

Punching Capacity

Paper sheets	
70-80g / 20lb	15 sheet
Transparent covers	
100-200 micron / 4-8 mil	3 sheet
200+ micron / 8+ mil	2 sheet

Other standard covers

160-270g / 40-60 lb	3 sheet
270+g / 60+ lb	2 sheet
Voltage:	120V AC 60Hz
Current:	2A
Duty Cycle:	30 Minutes On / 30 Minutes Off

BINDING CAPACITY

Max comb size	1 1/2" / 38mm
Max document (80g / 20lb)	300 sheet

TECHNICAL DATA

Paper dimensions	letter	Waste tray capacity	c. 1500 sheet
Punching slots	19	Motor wattage	100
Slot pitch	14.28mm / 9/16"	Net weight	9.5 kg / 20.9 lb
Adjustable edge guide	yes-rotary	Dimensions (LxDxH)	460 x 390 x 130mm / 18.1" x 15.3" x 5.1"

IMPORTANT SAFETY INSTRUCTIONS — Read Before Using!



Please keep for future reference

When punching;

- always ensure the machine is on a stable surface
- test punch scrap sheets and set the machine before punching final documents
- remove staples and other metal articles prior to punching
- never exceed the machines quoted performance

Keep the machine away from heat and water sources.

Never attempt to open or otherwise repair the machine.



Plug the machine into an easily accessible socket.

Turn off the machine after each use

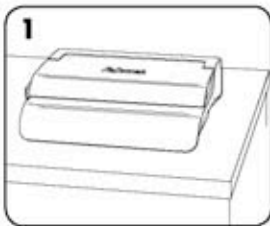
Unplug the machine when not in use for an extended period.

Note — this machine features a thermal cut-out device which activates when the machine is overheated during use. It will automatically reset when the machine is safe to operate.

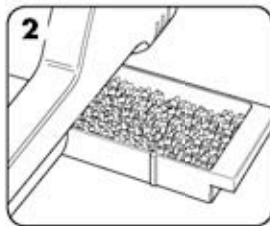
COMB DIAMETER & DOCUMENT SIZES

		
mm	inch	number of pages
6	1/4	2-20
8	5/16	21-40
10	3/8	41-55
12	1/2	56-90
16	5/8	91-120
18	1 1/16	121-150
22	7/8	151-180
25	1	181-200
32	1 1/4	201-240
38	1 1/2	241-340

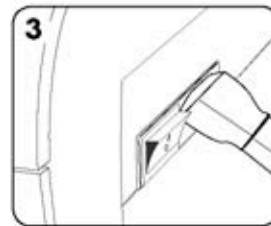
SET UP



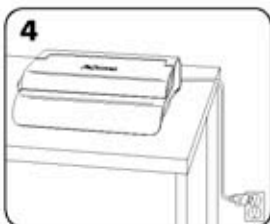
1. Ensure the machine is on a stable surface.



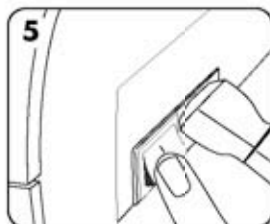
2. Check waste tray is empty and correctly fitted.



3. Please connect power cable to inlet at back of laminator.



4. Plug the machine into an easily accessible mains socket. Switch the mains supply on



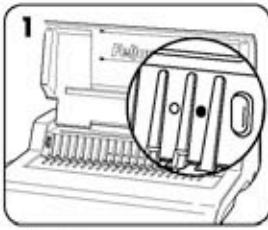
5. Switch the machine on (located at the rear of the machine)



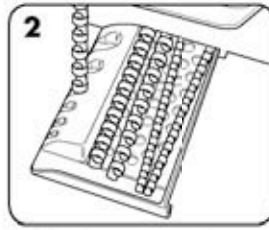
6. Lift the lid. Check the green power neon is on. Ensure the comb-opening lever is pushed backwards.

ENGLISH

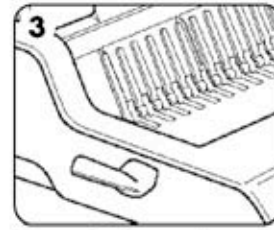
BEFORE YOU BIND



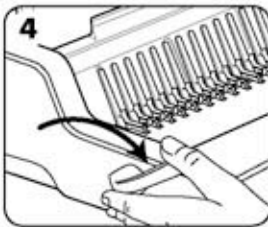
1. Check the green power neon is on.



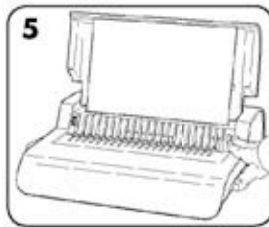
2. Select the correct comb diameter using the comb storage tray.



3. Insert the plastic comb into the opening mechanism.

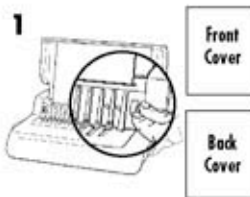


4. Pull comb-opening lever forward to open the comb.

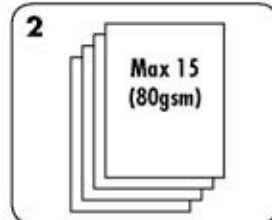


5. Test punch scrap sheets to check edge guide setting.

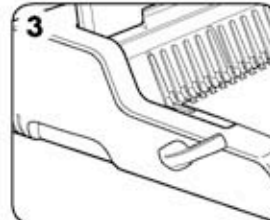
STEPS TO BIND



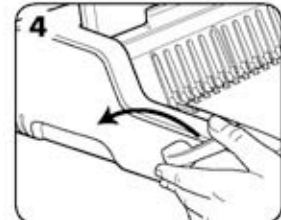
1. Punch front and back covers first.



2. Punch sheets in small batches that do not overload the machine or the user.



3. Load punched sheets directly onto the opened comb. Starting with the front of the document.



4. When all punched sheets are loaded onto the comb, push the comb lever backwards to close the comb and remove the bound document.

CORRECTING A BOUND DOCUMENT

Additional sheets may be include or removed at any time by opening and then closing the comb as previously described.

REMOVAL OF WASTE CLIPPINGS

The waste tray is located under the machine and is accessed from the right side. For best results empty the tray regularly.

STORAGE

Switch off the machine. Lower the lid. The Pulsar-E comb binder is designed to be stored horizontally on the desk.

TROUBLESHOOTING

Problem	Cause	Solution
No Green power light	Machine is not switched on	Switch on machine at rear next to plug inlet and at the socket
Red standby light	Machine is overloaded when punching	Press the punch button. The machine will withdraw the punches and re-set itself. Continue this process until the punch cycle is complete
Punched holes are not central	Edge guide not set	Adjust edge guide until hole pattern is correct
Machine will not punch	Blockage	Check waste tray is empty. Check for blockage to paper entry.
Punch holes are not parallel to edge	Debris is stuck below dies	Take stiff cardboard and slide into the paper entry. Move the cardboard sideways to release any stray clippings into the waste tray
Waste tray leaks	Waste tray is not correctly inserted or 'burst feature' has activated	Check waste tray is empty and 'burst feature' is closed
Partial holes	Sheets not correctly aligned to punch pattern	Adjust edge guide and test punch scrap sheets until correct
Damaged hole edges	Possibly overloading the machine	Punch plastic covers with paper sheets. Reduce number of sheets being punched
Waste tray leaks	Waste tray is not correctly inserted or 'burst feature' has activated	Check waste tray is empty and 'burst feature' is closed

Need Help?

Customer Service.....
www.fellowes.com
Let our experts help you
with a solution.
Always call Fellowes
before contacting
your place of purchase.

WARRANTY

Fellowes warrants all parts of the binder to be free of defects in material and workmanship for 2 years from the date of purchase by the original consumer. If any part is found to be defective during warranty period, your sole and exclusive remedy will be repair or replacement at Fellowes' option and expense, of the defective part. This warranty does not apply in cases of abuse, mishandling or unauthorised repair. Any implied warranty, including that of merchantability or fitness for particular purpose, is hereby limited in duration to the appropriate warranty

period set forth above. In no event shall Fellowes be liable for any consequential damages attributable to this product. This warranty gives you specific legal rights. You may have other legal rights that vary from this warranty. The duration, terms and conditions of this warranty are valid worldwide, except where different limitations, restrictions or conditions may be required by local law. For more details or to obtain services under this warranty, please contact Fellowes or your dealer.



Useful Phone Numbers

Help Line

Australia	+ 1-800-33-11-77
Canada	+ 1-800-665-4339
Europe	00-800-1810-1810

México	+ 1-800-234-1185
United States	+ 1-800-955-0959

Fellowes

Australia	+ 61-3-8336-9700
Benelux	+ 31-[0]-76-523-2090
Canada	+ 1-905-475-6320
Deutschland	+ 49-[0]-5131-49770
España	+ 34-91-748-05-01
France	+ 33-[0]-1-30-06-86-80
Italia	+ 39-071-730041

Japan	+ 81-[0]-3-5496-2401
Korea	+ 82-2-3462-2884
Malaysia	+ 60-[0]-35122-1231
Polska	+ 48-[0]-22-771-47-40
Singapore	+ 65-6221-3811
United Kingdom	+ 44-[0]-1302-836836
United States	+ 1-630-893-1600

Fellowes 1789 Norwood Avenue, Itasca, Illinois 60143-1095 • USA • 630-893-1600

Australia	Canada	Deutschland	France	Japan
Benelux	China	España	Italia	Korea

fellowes.com



MyBinding.com
When Image Matters.

2006 Fellowes, Inc. Part No. 402098