

8.0 PARTS LIST

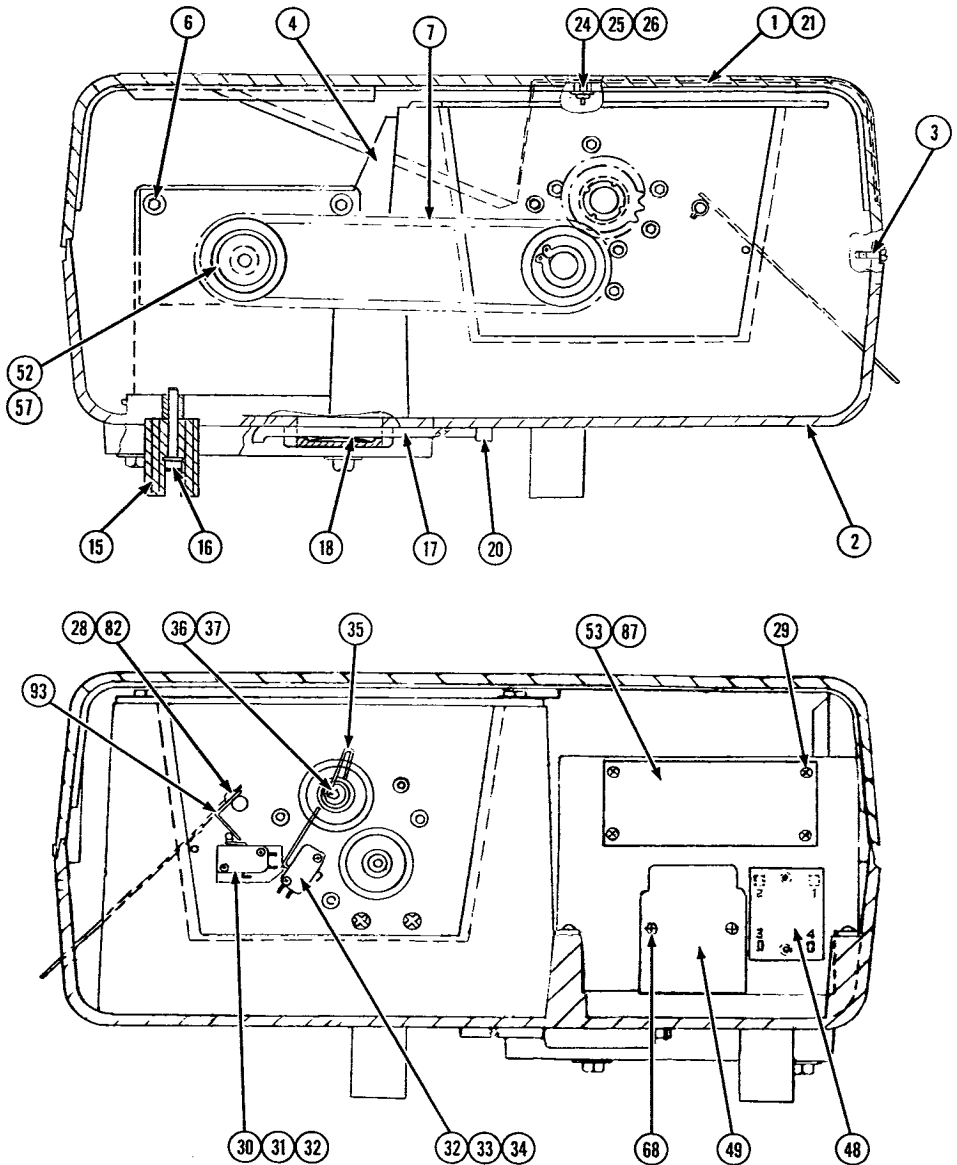
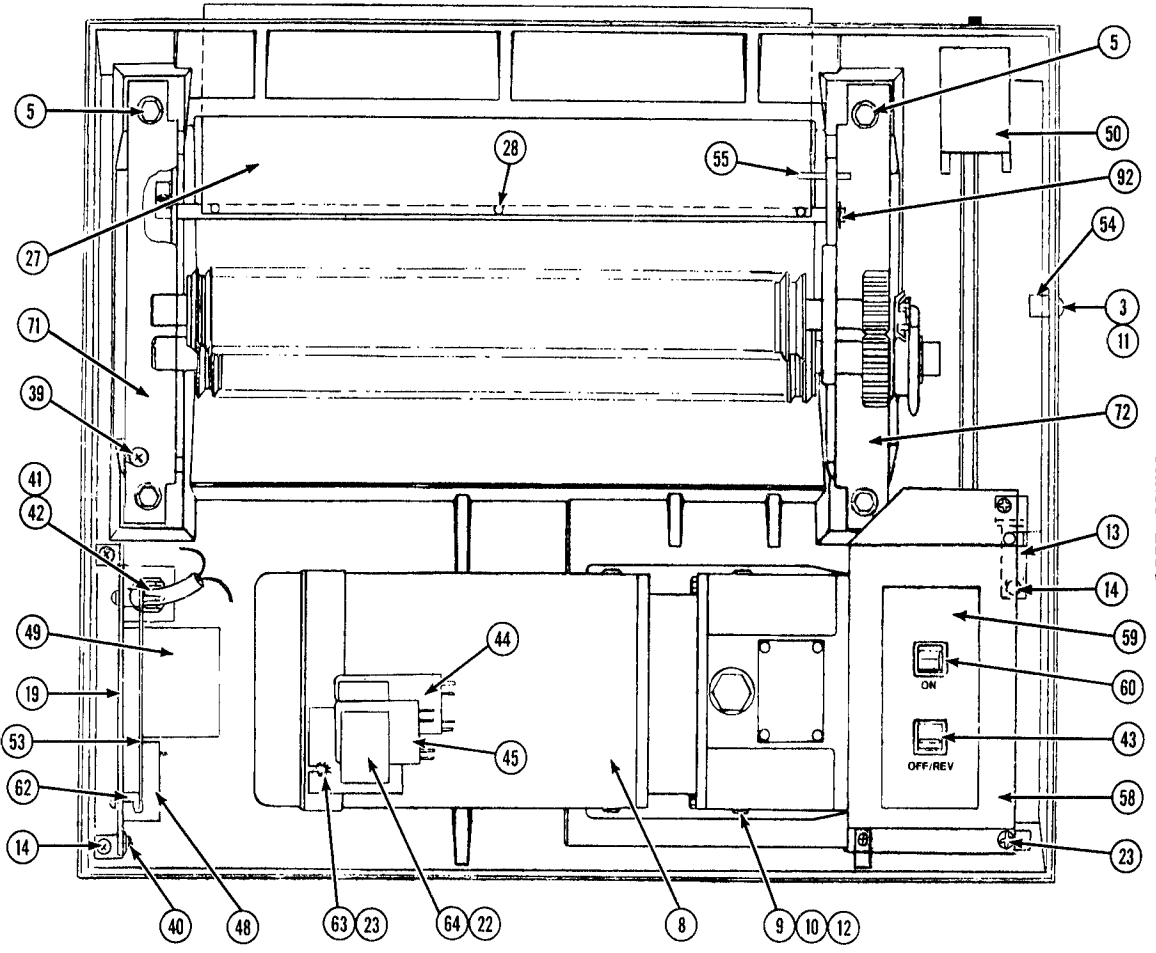


FIGURE 8-1



8.0 PARTS LIST

FIGURE 8-2

8.0 PARTS LIST

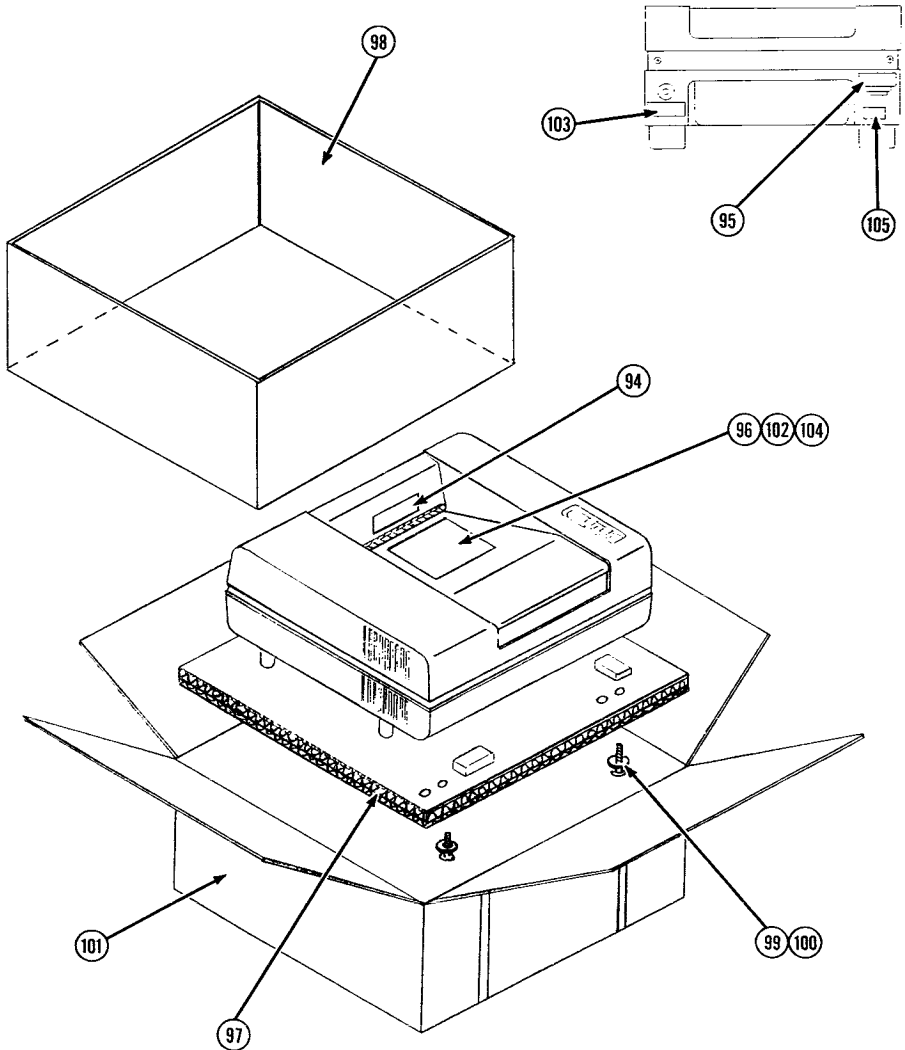


FIGURE 8-5

8.0 PARTS LIST

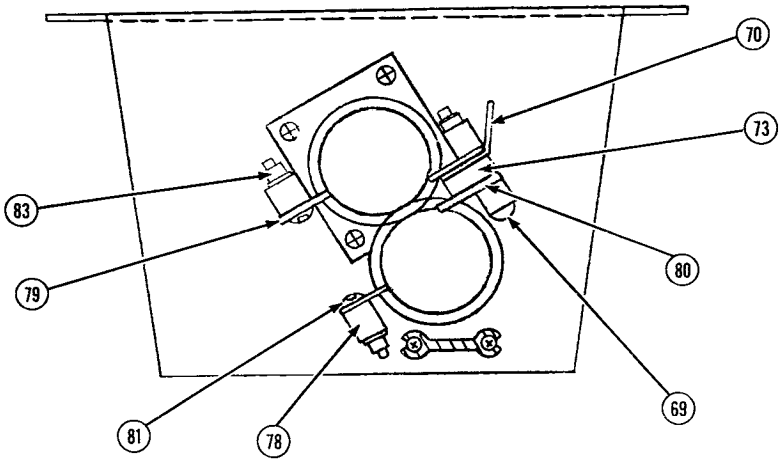


FIGURE 8-3

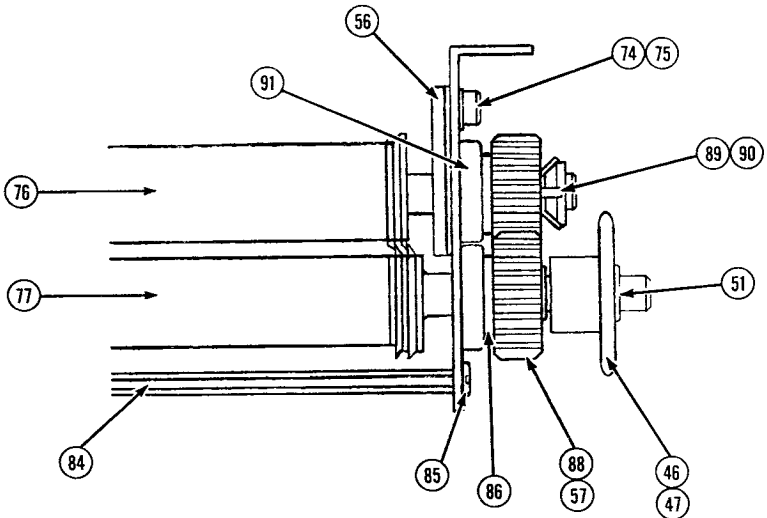


FIGURE 8-4

8.0 PARTS LIST

ITEM	PART NO.	DESCRIPTION	QUANTITY PER MODEL	
			1256S-1	1656S-1
50	1145245	CIRCUIT BREAKER, 16 AMP	1	1
51	1931605	GRIP RING, 5/8 DIA.	2	2
52	1146905	SPROCKET, 16T	1	1
53	1146894	P.C. BOARD	1	1
54	1931005	CABLE CLAMP CIRCULAR TYPE	4	4
55	1929224	SPRING PIN	1	1
56	1145929	RETAINER, BEARING	1	1
57	1852807	KEY, SQUARE 3/16x1/2	2	2
58	1146853	SWITCH BRACKET	1	1
59	7500633	SWITCH DECAL	1	1
60	1146830	ROCKER SWITCH, ON	1	1
62	1146855	P.C. BOARD SUPPORT	4	4
63	1146858	CAPACITOR BRACKET	1	1
64	1146854	CAPACITOR CLIP	2	2
68	1907806	SCREW #8-32x3/4	4	4
69	1902855	#10-32x1 3/4 SCR. PAN HD.	2	2
70	7500835	FRONT DEFLECTOR		1
	7500635	FRONT DEFLECTOR	1	
71	1145919	LEFT SIDE PLATE		1
72	1145920	RIGHT SIDE PLATE	1	1
73	1145995	FOLDING BLOCK	2	2
74	1900512	1/4-20x1/2 SOCKET HD. SCR.	12	12
75	1926002	SPRING, LOCKWASHER	12	12
76	1145895	UPPER CUTTER		1
	1145878	UPPER CUTTER	1	
77	1146909	LOWER CUTTER	1	
	1146910	LOWER CUTTER		1
78	1145882	BAR SUPPORT, STRIPPER	1	
	1145927	BAR SUPPORT, STRIPPER		1
79	1145925	BACK STRIPPER		2
	1145921	BACK STRIPPER	2	
80	1145922	FRONT STRIPPER	2	
	1145926	FRONT STRIPPER		2
81	1903033	#10-32x7/8 TRUSS HD. SCR.	8	8
82	1145973	BAR, GUARD	1	
	1145974	BAR, GUARD		1
83	1926822	#10-32 NUT	10	12
84	1145799	GUARD, SPACER	1	
	1145798	GUARD, SPACER		1
85	1907818	#10-32x5/8 THD. CUT. SCR.	4	4
86	1145928	SPACER, CUTTER	2	2
87	1146863	HARNES, POWER	1	1
88	1145976	GEAR, CUTTER	2	2
89	1145931	LOCKWASHER	1	1
90	1145930	#5/16-32 LOCKNUT	1	1
91	1145180	BALL BEARINGS, CUTTER	4	4
92	1931606	RETAINING RING	1	1
93	1145975	ACTUATOR, FLAP-SWITCH	1	1
94	6009006	WARNING LABEL	1	1
95	1155010	NAME PLATE	1	1
96	6000015	INSTRUCTION MANUAL	1	1
97	1156054	CORRUGATED PAD	1	1
98	1156038	TUBE, PACKING	1	1
99	1926034	WASHER, SHIPPING	3	3
100	1951943	SHIPPING BOLT #3/8-16x3	3	3
101	1156039	CARTON, SHREDDER	1	1

8.0 PARTS LIST

ITEM	PART NO.	DESCRIPTION	QUANTITY PER MODEL	
			1256S-1	1656S-1
1	7500830	TOP COVER		1
	7500630	TOP COVER	1	
2	7500631	BOTTOM COVER	1	
	7500831	BOTTOM COVER		1
3	1146769	SCREW W/PLASTIC WASHER	5	5
4	1146901	PLATE SUPPORT-CAST	1	1
5	1903205	SCREW 5/16-18x3/4	4	4
6	1900539	SCREW 1/4x1 1/4	2	2
7	1146904	CHAIN 3/8 PITCH	1	1
8	1146831	GEARMOTOR	1	1
9	1951978	SCREW 5/16-18x2"	4	4
10	1925025	WASHER, FLAT	4	4
11	1926801	NUT & WASHER 6-32 KEPS	1	1
12	1926821	NUT 5/16-18	4	4
13	1145754	BRACKET, SWITCH	1	1
14	1911106	SCREW #8-32x3/8 (SEMS)	5	3
15	1120322	RUBBER FOOT	4	4
16	1900537	SCREW #1/4-20x1-3/4	4	4
17	7500636	ROD, BAG	2	2
18	1145231	SPRING	2	2
19	1146862	POWER BRACKET	1	1
20	1145247	PLASTIC CAP	2	2
21	7500634	FRONT LABEL	1	
	7501031	FRONT LABEL		1
22	1907805	SCREW #6-32x3/16 T.C.	4	4
23	1911105	SCREW #8-32x1/2 SEMS	4	4
24	7500632	TOP SHIELD	1	
	7500832	TOP SHIELD		1
25	1926801	NUT #6-32 (KEPS)	2	2
26	1925035	WASHER, FLAT	2	2
27	1145402	PLASTIC GUARD	1	
	1145405	PLASTIC GUARD		1
28	1902804	SCREW #8-32x3/8	4	4
29	1907902	SCREW #6-32x3/8 T.C.	4	4
30	1131147	MICROSWITCH, FLAP	1	1
31	1146539	INSULATION	1	1
32	1902834	SCREW #4-40x5/8	4	4
33	1139322	MICROSWITCH, REVERSE	1	1
34	1145694	STANDOFF, HEX.	2	2
35	1131146	ACTUATOR	1	1
36	1900556	SCREW #10-32x5/16 SHCS	1	1
37	1925009	WASHER, FLAT #10	1	1
38	1119440	CONNECTOR	3	3
39	1902816	SCREW #6-32x5/16	1	1
40	1907202	SCREW #6-32x1/2 T.C.	3	3
41	6200011	POWER CORD	1	1
42	1952408	STRAIN RELIEF	1	1
43	1146829	ROCKER SWITCH, OFF	1	1
44	1165894	START CAPACITOR, 150μF	1	1
45	1165895	RUN CAPACITOR, 10μF	1	1
46	1146780	SPROCKET, 18T	1	1
47	1852817	KEY, SQUARE 3/16x3/8	1	1
48	1146856	SOLID STATE RELAY	1	1
49	1146857	CONTACTOR	1	1

8.0 PARTS LIST

ITEM	PART NO.	DESCRIPTION	QUANTITY PER MODEL	
			1256S-1	1656S-1
102	1146808	PACK OF 10 BAGS	1	1
103	6009007	WARNING LABEL	1	1
104	1104949	POLY BAG	1	1
105	6009000	CAUTION LABEL	1	1