

# 10.14 6250-1 & 6360-1 PARTS LIST

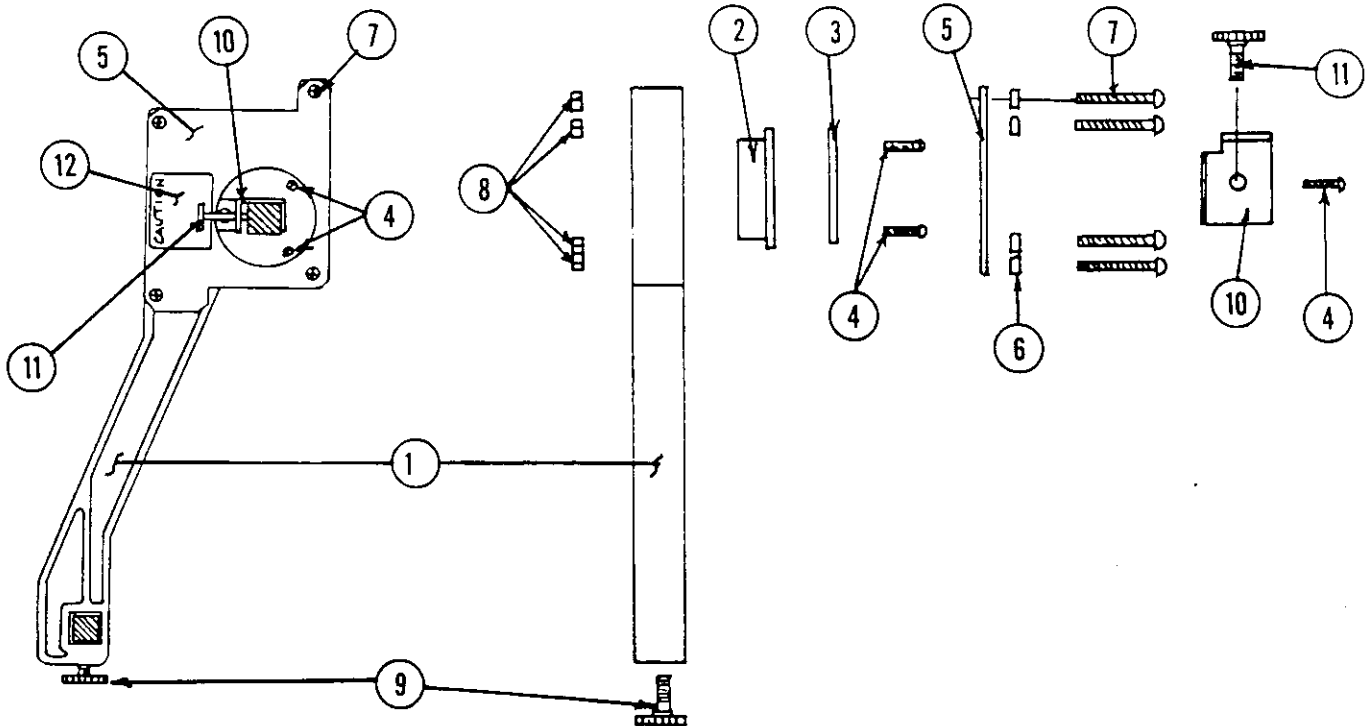


FIGURE 10.14.1

| ITEM NO. | PART NUMBER | DESCRIPTION                           | 6250-1 | 6360-1 |
|----------|-------------|---------------------------------------|--------|--------|
| 1        | 1152299     | SLITTER ARM . . . . .                 | 3      | 3      |
| 2        | 1152298     | SLITTER HOLDER. . . . .               | 3      | 3      |
| 3        | 1152286     | CLAMP PLATE, SLITTER. . . . .         | 3      | 3      |
| 4        | 1911109     | SCREW, 6-32 X 1/4". . . . .           | 9      | 9      |
| 5        | 1152297     | RETAINER, SLITTER . . . . .           | 3      | 3      |
| 6        | 1925202     | WASHER, 11/64" FLAT . . . . .         | 12     | 12     |
| 7        | 1902812     | SCREW, #6-32 X 7/8" . . . . .         | 12     | 12     |
| 8        | 1926801     | NUT, #6-32. . . . .                   | 12     | 12     |
| 9        | 1140078     | KNOB, KNURLED SCREW . . . . .         | 3      | 3      |
| 10       | 1152653     | BRACKET, SLITTER. . . . .             | 3      | 3      |
| 11       | 1914203     | SCREW, #10-32 X 1/2" KNURLED. . . . . | 3      | 3      |
| 12       | 1140051     | LABEL, SLITTER BLADE CAUTION. . . . . | 6      | 6      |

10.14 6250-1 & 6360-1 PARTS LIST (Continued)

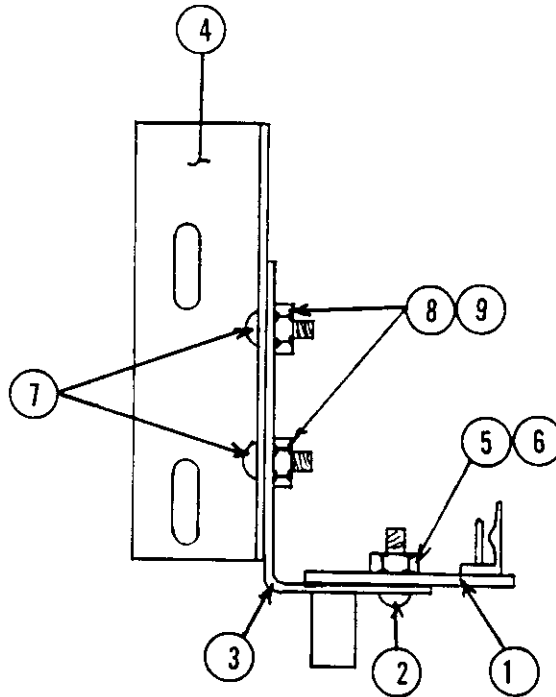


FIGURE 10.14.2

| ITEM NO. | PART NUMBER | DESCRIPTION                       | 6250-1 | 6360-1 |
|----------|-------------|-----------------------------------|--------|--------|
| 1        | 1152279     | INTERRUPTER BOARD . . . . .       | 1      | 1      |
| 2        | 1902842     | SCREW, #4-40 X 3/8" . . . . .     | 2      | 2      |
| 3        | 1152228     | MOUNTING BRACKET, MOTOR SENSOR. . | 1      | 1      |
| 4        | 1152229     | BRACKET, MOTOR SENSOR . . . . .   | 1      | 1      |
| 5        | 1925801     | LOCKWASHER, #8. . . . .           | 2      | 2      |
| 6        | 1926704     | NUT, #4-40. . . . .               | 2      | 2      |
| 7        | 1911109     | SCREW, #6-32 X 1/4" . . . . .     | 2      | 2      |
| 8        | 1925007     | WASHER, #6 FLAT . . . . .         | 2      | 2      |
| 9        | 1926614     | NUT, #6-32. . . . .               | 2      | 2      |

10.14 6250-1 & 6360-1 PARTS LIST (Continued)

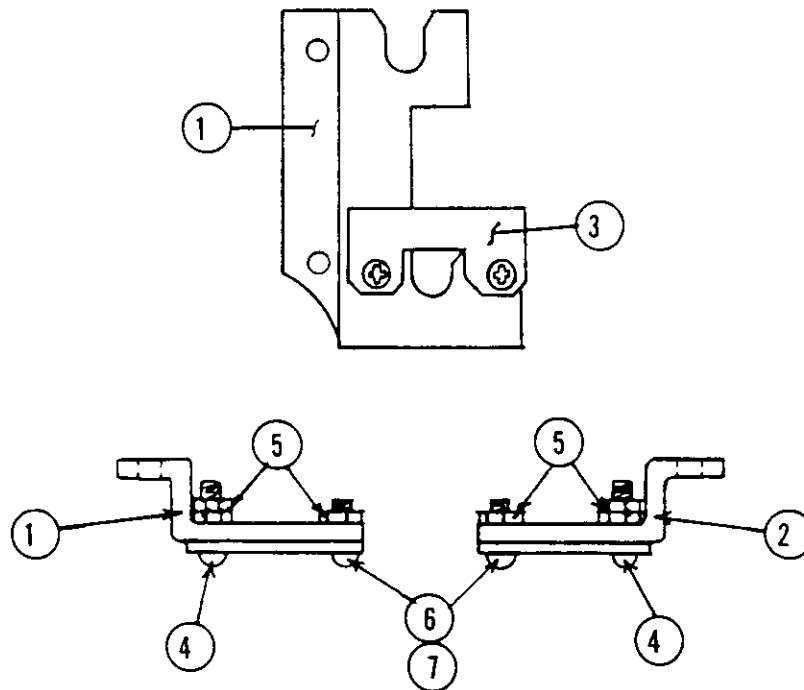
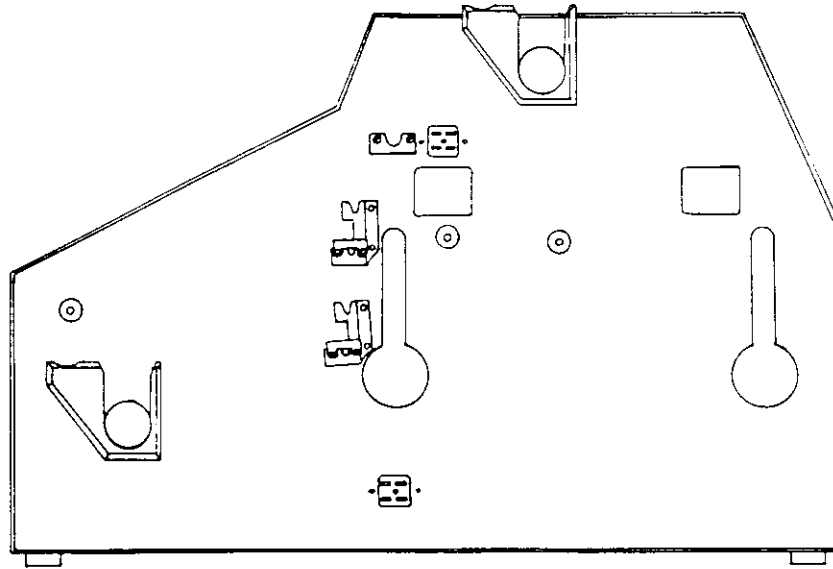


FIGURE 10.14.3

| ITEM NO. | PART NUMBER | DESCRIPTION                     | 6250-1 | 6360-1 |
|----------|-------------|---------------------------------|--------|--------|
| 1        | 1152474     | HEATER BRACKET, RIGHT . . . . . | 2      | 2      |
| 2        | 1152475     | HEATER BRACKET, LEFT. . . . .   | 2      | 2      |
| 3        | 1152476     | LATCH, HEATER BRACKET . . . . . | 4      | 4      |
| 4        | 1902806     | SCREW, #8-32 X 5/8" . . . . .   | 4      | 4      |
| 5        | 1926702     | NUT, #10-32 . . . . .           | 12     | 12     |
| 6        | 1900508     | SCREW, #8-32 X 1/4" . . . . .   | 4      | 4      |
| 7        | 1925806     | LOCKWASHER, #8. . . . .         | 4      | 4      |

10.14 6250-1 & 6360-1 PARTS LIST (Continued)

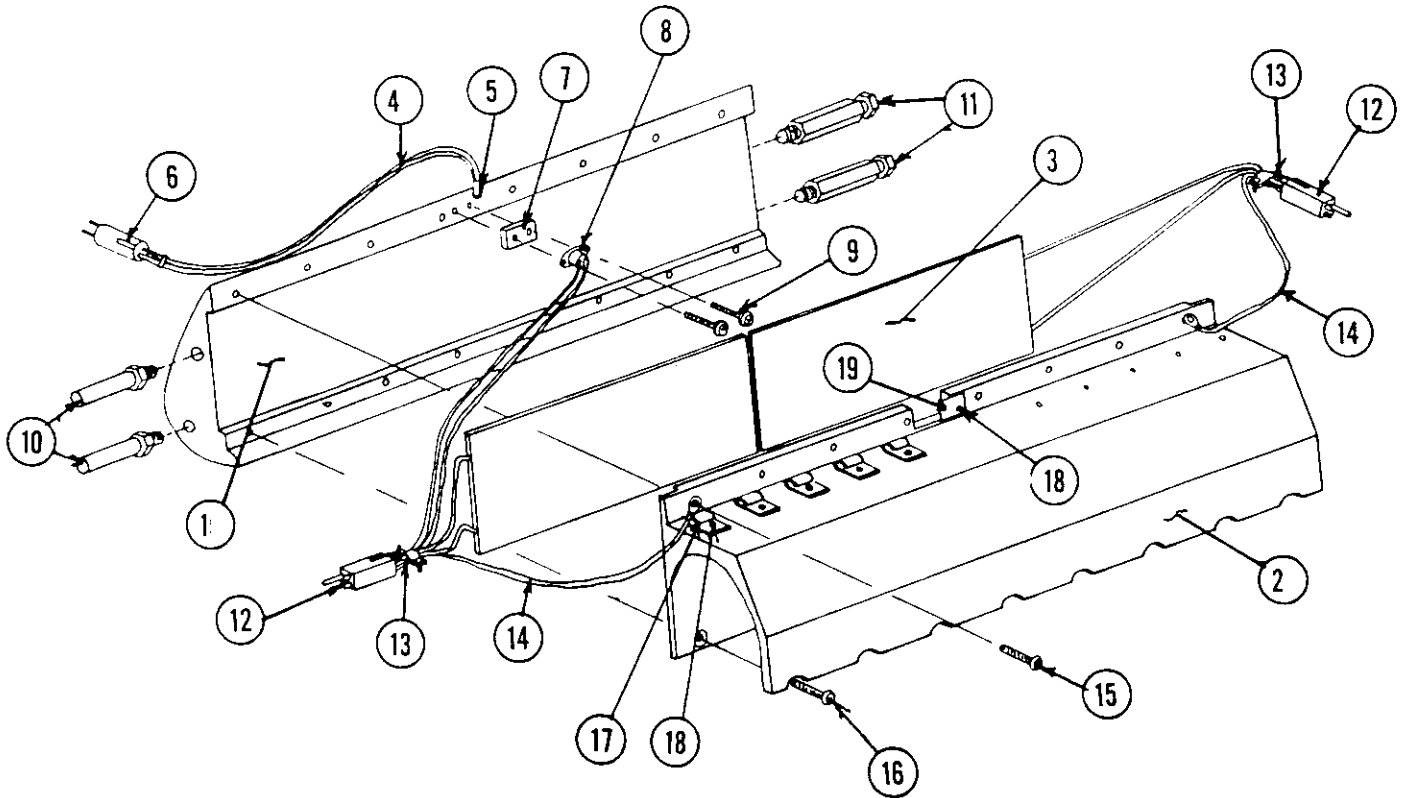


FIGURE 10.14.4

| ITEM NO. | PART NUMBER | DESCRIPTION                           | 6250-1 | 6360-1 |
|----------|-------------|---------------------------------------|--------|--------|
| 1        | 1152222     | HEAT SHOE, 25" . . . . .              | 2      |        |
|          | 1152224     | HEAT SHOE, 36" . . . . .              |        | 2      |
| 2        | 1152219     | COVER, 25" ROLLER . . . . .           | 2      |        |
|          | 1152220     | COVER, 36" ROLLER . . . . .           |        | 2      |
| 3        | 1152639     | HEATER ELEMENT. . . . .               | 4      |        |
|          | 1152640     | HEATER ELEMENT. . . . .               |        | 4      |
| 4        | 1118556     | SENSOR, RTD . . . . .                 | 2      | 2      |
| 5        | 1954325     | INSULATING SLEEVE . . . . .           | 2      | 2      |
| 6        | 1152347     | PLUG, 2 CONTACT . . . . .             | 2      | 2      |
| 7        | 1154840     | MOUNTING BLOCK, THERMOSTAT. . . . .   | 2      | 2      |
| 8        | 1154841     | THERMOSTAT. . . . .                   | 2      | 2      |
| 9        | 1902842     | SCREW, #4-40 X 3/8" PAN HD. . . . .   | 4      | 4      |
| 10       | 1152654     | POST. . . . .                         | 4      | 4      |
| 11       | 1152655     | POST, GROOVED . . . . .               | 4      | 4      |
| 12       | 1152265     | CONNECTOR, MALE . . . . .             | 4      | 4      |
| 13       | 1954334     | SHRINK TUBE . . . . .                 | 4      | 4      |
| 14       | 1152284     | LEAD & TERMINAL (GREEN) . . . . .     | 4      | 4      |
| 15       | 1902853     | SCREW, #10-24 X 5/8" PAN HD.. . . .   | 16     | 20     |
| 16       | 1902643     | SCREW, #10-24 X 3/8" FLAT HD. . . . . | 16     | 20     |
| 17       | 1152308     | SPRING CLIP . . . . .                 | 10     | 14     |
| 18       | 1907812     | SCREW, #4-40 X 1/4" . . . . .         | 12     | 16     |
| 19       | 1152311     | SPRING. . . . .                       | 2      | 2      |

10.14 6250-1 & 6360-1 PARTS LIST (Continued)

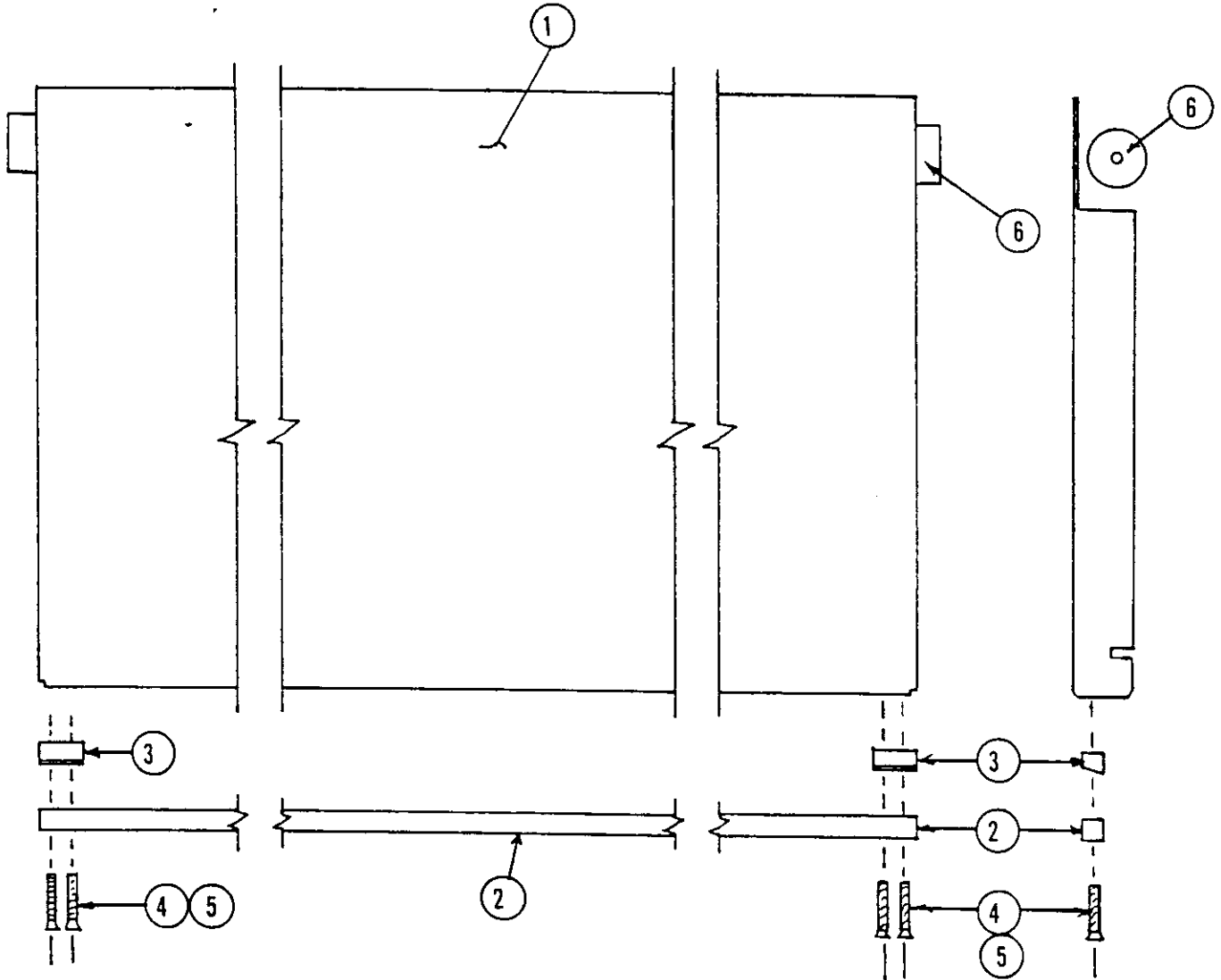


FIGURE 10.14.5

| ITEM NO. | PART NUMBER | DESCRIPTION                           | 6250-1 | 6360-1 |
|----------|-------------|---------------------------------------|--------|--------|
| 1        | 1152491     | FEED TABLE, 25" . . . . .             | 1      |        |
|          | 1152490     | FEED TABLE, 36" . . . . .             |        | 1      |
| 2        | 1152650     | SUPPORT BAR, 25" GUIDE TRAY . . . . . | 1      |        |
|          | 1152651     | SUPPORT BAR, 36" GUIDE TRAY . . . . . |        | 1      |
| 3        | 1152652     | SPACER, GUIDE TRAY. . . . .           | 2      | 2      |
| 4        | 1902628     | SCREW, #10-32 X 1-1/2". . . . .       | 4      | 4      |
| 5        | 1926702     | NUT, #10-32 . . . . .                 | 4      | 4      |
| 6        | 1152488     | BAR, 25" TRAY SUPPORT . . . . .       | 1      |        |
|          | 1152489     | BAR, 36" TRAY SUPPORT . . . . .       |        | 1      |

10.14 6250-1 & 6360-1 PARTS LIST (Continued)

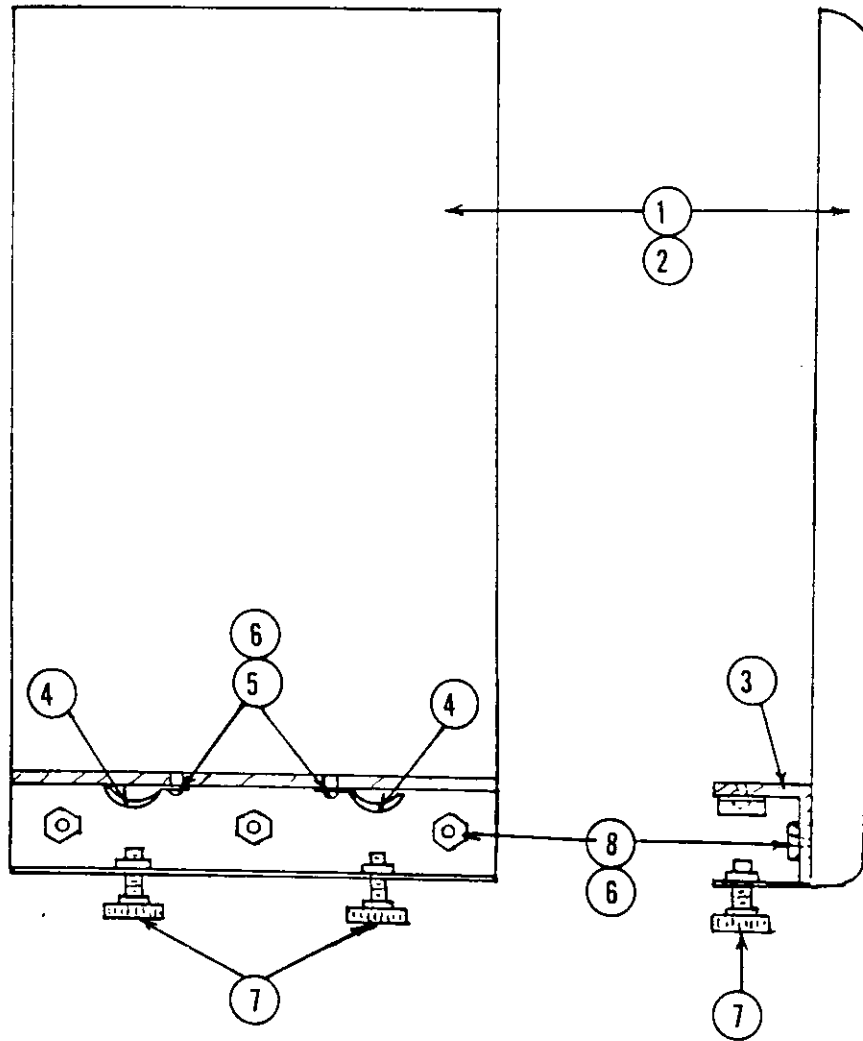


FIGURE 10.14.6

| ITEM NO. | PART NUMBER | DESCRIPTION                         | 6250-1 | 6360-1 |
|----------|-------------|-------------------------------------|--------|--------|
| 1        | 1152667     | GUIDE TRAY, LEFT. . . . .           | 1      | 1      |
| 2        | 1152664     | GUIDE TRAY, RIGHT . . . . .         | 1      | 1      |
| 3        | 1152648     | GUIDE CHANNEL . . . . .             | 2      | 2      |
| 4        | 1152649     | SPRING, GUIDE BLOCK . . . . .       | 4      | 4      |
| 5        | 1902803     | SCREW, #6-32 X 1/4" PAN HD. . . . . | 4      | 4      |
| 6        | 1925904     | LOCKWASHER, #6. . . . .             | 10     | 10     |
| 7        | 1140078     | KNOB, KNURLED SCREW . . . . .       | 4      | 4      |
| 8        | 1926707     | NUT, #6 . . . . .                   | 10     | 10     |

10.14 6250-1 & 6360-1 PARTS LIST (Continued)

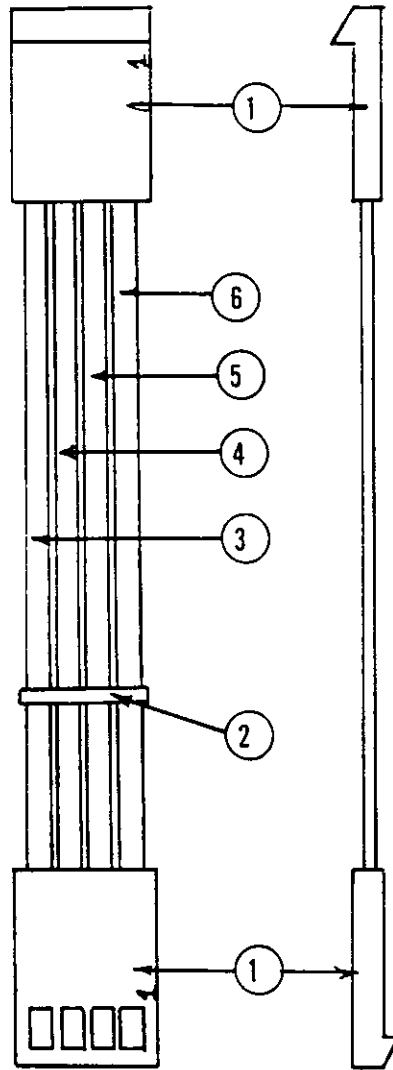


FIGURE 10.14.7

| ITEM NO. | PART NUMBER | DESCRIPTION                        | 6250-1 | 6360-1 |
|----------|-------------|------------------------------------|--------|--------|
| 1        | 1951302     | CONNECTOR 4 PIN SOCKET. . . . .    | 2      | 2      |
| 2        | 1932121     | WIRE TIE. . . . .                  | 5      | 5      |
| 3        | 1152439     | LEAD & TERMINAL (GREEN) . . . . .  | 1      | 1      |
| 4        | 1152440     | LEAD & TERMINAL (RED) . . . . .    | 1      | 1      |
| 5        | 1152441     | LEAD & TERMINAL (ORANGE) . . . . . | 1      | 1      |
| 6        | 1152442     | LEAD & TERMINAL (BLUE) . . . . .   | 1      | 1      |

10.14 6250-1 & 6360-1 PARTS LIST (Continued)

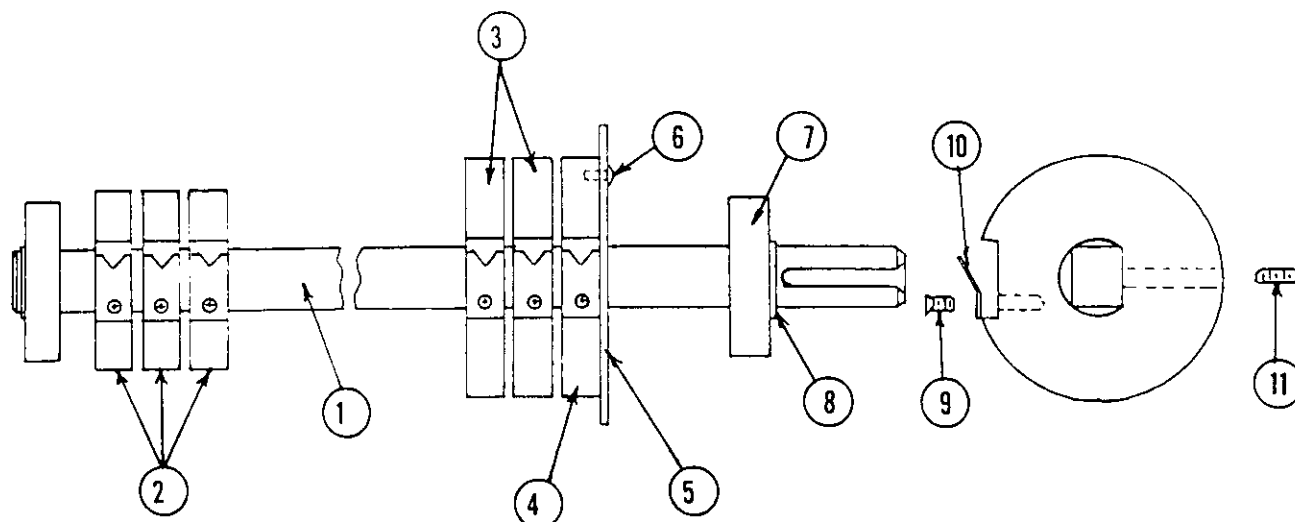


FIGURE 10.14.8

| ITEM NO. | PART NUMBER | DESCRIPTION                         | 6250-1 | 6360-1 |
|----------|-------------|-------------------------------------|--------|--------|
| 1        | 1152334     | SUPPLY MANDREL, 25" . . . . .       | 2      |        |
|          | 1152333     | SUPPLY MANDREL, 36" . . . . .       |        | 2      |
| 2        | 1152661     | CORE ADAPTOR, 2-1/4" . . . . .      | 6      | 6      |
| 3        | 1152658     | CORE ADAPTOR, 3" . . . . .          | 4      | 4      |
| 4        | 1152659     | CORE ADAPTOR, END . . . . .         | 2      | 2      |
| 5        | 1152660     | PLATE, CORE ADAPTOR . . . . .       | 2      | 2      |
| 6        | 1911116     | SCREW, #6-32 X 3/8" . . . . .       | 6      | 6      |
| 7        | 1140515     | BEARING . . . . .                   | 4      | 4      |
| 8        | 1930521     | RETAINING RING. . . . .             | 4      | 4      |
| 9        | 1902803     | SCREW, #6-32 X 1/4" . . . . .       | 12     | 12     |
| 10       | 1152656     | CLIP, CORE ADAPTOR. . . . .         | 12     | 12     |
| 11       | 1900063     | SET SCREW, #1/4-20 X 1/2" . . . . . | 12     | 12     |