

---

***DS 60 CE***  
***Illustrated Parts Booklet***  
***( 000 - 070 )***

---

---

© GBC Films Group, December 2000  
Do not duplicate without written permission

**Booklet #: DS60CEPB001**

**GBC Films Group**  
**4151 Anderson Road**  
**DeForest, WI 53532**  
**Ph: ( 608 ) 246 - 8844**  
**Fx: ( 608 ) 246 - 8645**

---

## Links to Content

<b>Drawing number :</b>	<b>Drawing Title:</b>	<b>Page number:</b>
<b>070 - 01.1</b>	<b>Stand assembly</b>	<b>1 - 1</b>
<b>070 - 01.2</b>	<b>Front and rear view</b>	<b>1 - 2</b>
<b>070 - 02.0</b>	<b>Drive side</b>	<b>1 - 3</b>
<b>070 - 03.0</b>	<b>Control side</b>	<b>1 - 4</b>
<b>070 - 04.1</b>	<b>Control side - electrical</b>	<b>1 - 5</b>
<b>070 - 04.2</b>	<b>Drive side - electrical</b>	<b>1 - 6</b>
<b>070 - 05.1</b>	<b>Electrical panel assembly 001-539</b>	<b>1 - 7</b>
<b>070 - 05.2</b>	<b>Wire assembly</b>	<b>1 - 8</b>
<b>070 - 06.1</b>	<b>Cabinets and decals</b>	<b>1 - 9</b>
<b>070 - 06.2</b>	<b>E-stops and control panel</b>	<b>1 - 10</b>

**Drawing number :**

**Drawing Title:**

**Page number:**

---

**This page intentionally left blank.**

The diagram shows an exploded view of a stand assembly with the following callouts and parts lists:

- 001-397 ASSY, PIVOT ROLLS
- 585-081 GUARD, TOP
  - (8) BHCS 1/4-20 X 3/4
  - (4) NYLOC NUT 1/4-20
  - (8) FLAT WASHER #12
- (2) M6E-03 BUMPER
  - (4) SHCS 1/4-20 X 5/8 (24050)
  - (4) NYLOC NUT 1/4-20 (37018)
- 585-016 GUARD, INFEED
  - (8) BHCS 1/4-20 X 3/4
  - (4) NYLOC NUT 1/4-20
  - (8) FLAT WASHER #12
- 585-076 GUARD, BRIDGE
  - (6) SHCS 1/4-20 X 3/4
  - (6) NYLOC NUT 1/4-20
  - (6) FLAT WASHER #12
- (2) 175-008 STANDOFF, PAN-POLE
  - (2) BHSCS 1/4-20 X 1/2 (24049)
- 585-079 GUARD, BRIDGE
  - (3) SHCS #8-32 X 1/2
  - (3) NYLOC NUT #8-32
  - (3) FLAT WASHER #8
- 520-054 REAR TABLE
  - (4) SHCS 1/4-20 (24050)
  - APPLY LOC-TITE-BLUE
- (2) 001-396 A ASSEMBLY, BRAKE
  - (4) 3510-22 SUNW IND CLEVIS
  - (2) 2032-230 THRUST WASHER
  - (12) BHSCS 1/2-13 X 3/4 (24107)
  - APPLY LOC-TITE-BLUE
- (2) 290-860 LOCK COLLAR
  - (2) M65-016 PULL HANDLE
  - (4) SHCS #10-32 X 1/2 (23164)
  - (4) F10 LOCK WASHER (33684)
  - APPLY LOC-TITE-BLUE
- 520-068 BRIDGE
  - (18) BHCS 1/4-20 X 3/8 (24048)
  - APPLY LOC-TITE-BLUE
- (4) 845-011 THREADED ROD
  - (8) HEX NUT 3/4-10 (36116)
- (4) 470-130 CASTORS
  - APPLY LOC-TITE-BLUE
- 425-803 MOTOR WIRE WITH BREADED CABLES SHIELD. SEE DETAIL A.
  - (4) SHCS 1/4-20 X 3/4 (23203)
  - (4) FLAT WASHER 1/4 (33004)
  - (4) 1/4 LOCK WASHER (33686)
  - APPLY LOC-TITE-BLUE
- 175-000 GROMMET FOR MOTOR WIRE
- (2) 700-009 SADDLE
  - (8) SHCS 3/8-16 X 1 (23305)
  - (2) 086-100 CLEVIS PIN
- (2) 001-394 IDLER ASSEMBLY
  - (4) SHCS 3/8-16 X 3/4 (23303)
  - (4) 3/8 LOCK WASHER (33688)
  - APPLY LOC-TITE-BLUE
- (2) CABLE TIE, 6 (63123)
- BREADED CABLES SHIELD, 1/2"
- MOTOR WIRE
- RINGTONGUETERNAL 10-12 WGX 1/4 DBL CRMP (GROUND IN CABINET) - SEE DETAIL A
- MOTOR

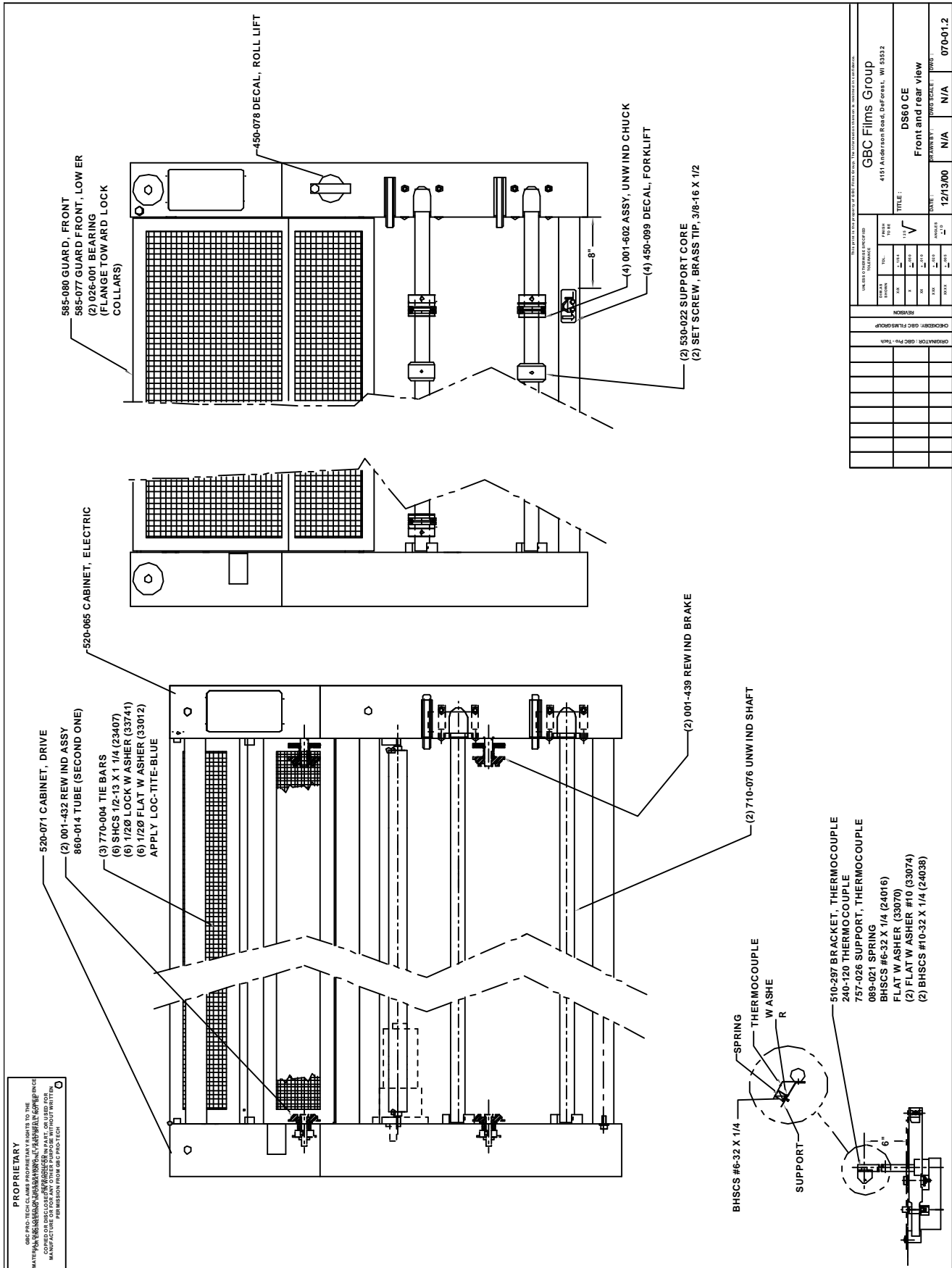
PROPRIETARY  
 GBC FILMS GROUP  
 MAKE REPAIRS TO YOUR EQUIPMENT AT THE FACTORY OR THROUGH AN AUTHORIZED SERVICE CENTER.  
 FOR ENGINEERING INFORMATION, CONTACT THE MANUFACTURER.  
 MANUFACTURED IN THE UNITED STATES OF AMERICA.

THIS PRINTED FILE IS THE PROPERTY OF GBC FILMS GROUP. THE INFORMATION CONTAINED HEREIN IS UNCLASSIFIED EXCEPT WHERE SHOWN OTHERWISE.

UNCLASSIFIED		CONTROLLED	
DATE	BY	DATE	BY
ISSUED	DATE	ISSUED	DATE
CHECKED BY: GBC FILMS GROUP		ORIGINATOR: GBC FILMS GROUP	
REVISION		DATE	

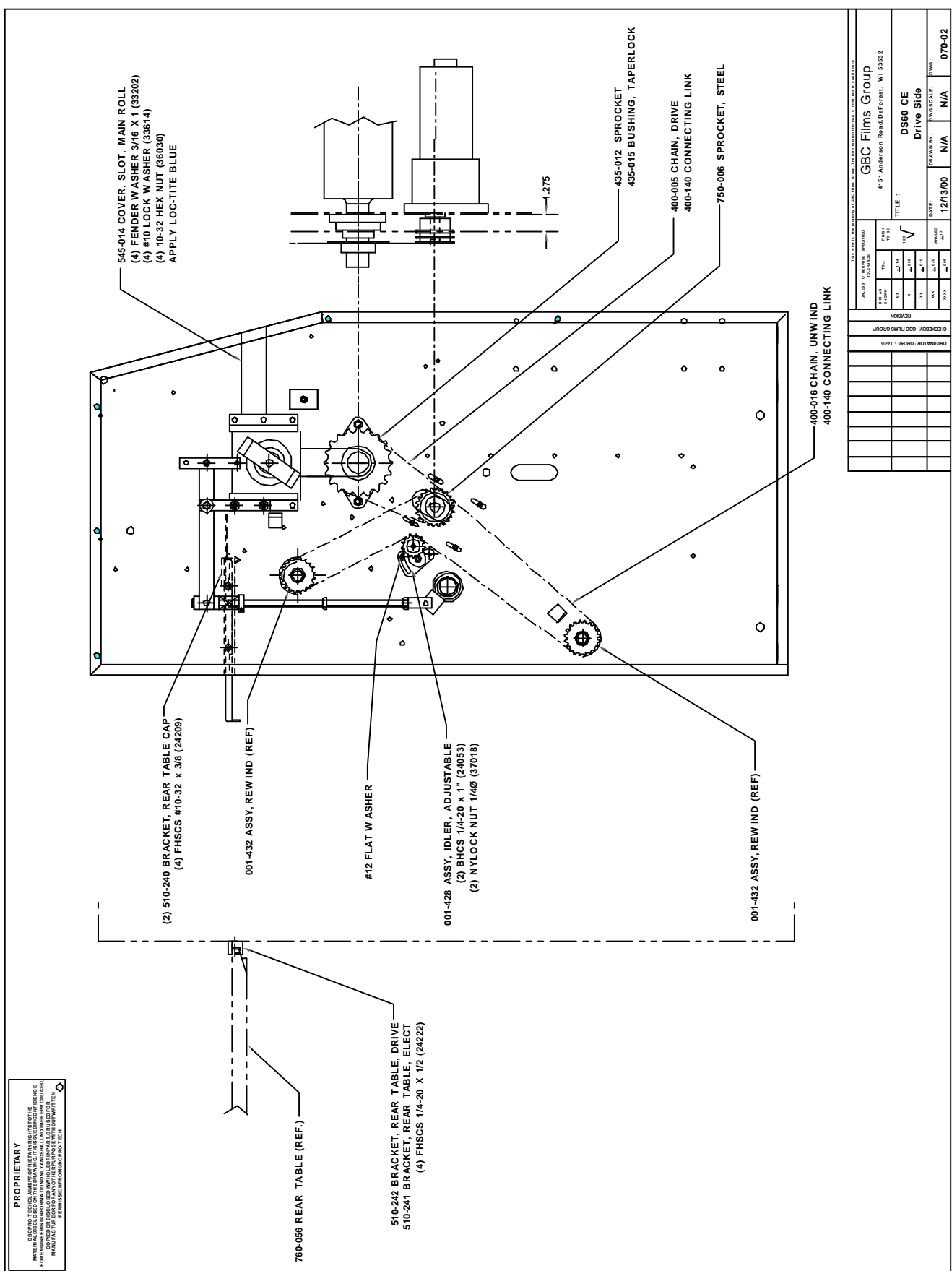
GBC Films Group  
 4151 Anderson Road DeForest, WI 53532

TITLE : DS60 CE Stand assembly  
 DRAWING NO: 72131000  
 DATE: N/A  
 SCALE: N/A  
 SHEET NO: 070-01-1  
 TOTAL SHEETS: 070-01-1



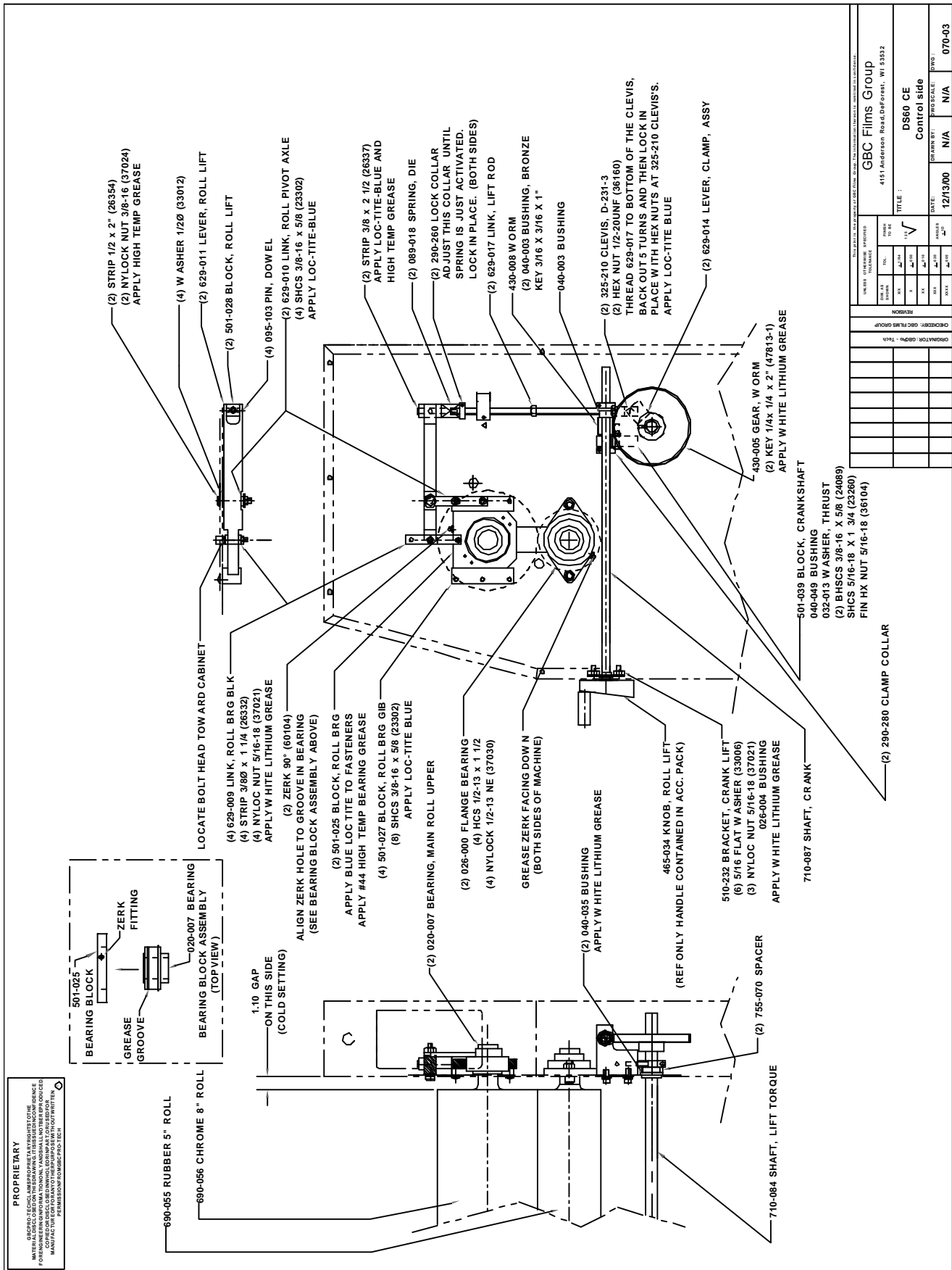
**PROPRIETARY**  
GBC PRO-TECH CLAIMS PROPRIETARY RIGHTS TO THE  
MATERIALS AND INFORMATION CONTAINED HEREIN. NO  
REPRODUCTION OR TRANSMISSION IN ANY FORM OR  
BY ANY MEANS, ELECTRONIC OR MECHANICAL,  
INCLUDING PHOTOCOPYING, RECORDING, OR BY  
ANY INFORMATION STORAGE AND RETRIEVAL SYSTEM,  
IS PERMITTED WITHOUT THE WRITTEN  
PERMISSION FROM GBC PRO-TECH.

GBC FILMS GROUP		4151 Anderson Road, Diefendorf, WI 53532	
TITLE: DS60 CE		DATE: 12/13/00	
DRAWN BY: N/A		CHECKED BY: N/A	
DESIGNED BY: N/A		APPROVED BY: N/A	
PART NUMBER: 070-01.2		REV: N/A	

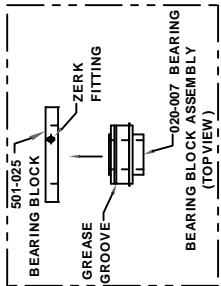


**PROPRIETARY**  
 GBC FILMS GROUP IS NOT RESPONSIBLE FOR THE  
 REPRODUCTION OR DISTRIBUTION OF THIS DOCUMENT  
 FOR ANY PURPOSES WITHOUT THE WRITTEN PERMISSION  
 OF GBC FILMS GROUP. THIS DOCUMENT IS THE PROPERTY  
 OF GBC FILMS GROUP AND IS TO BE KEPT IN CONFIDENCE.  
 ALL RIGHTS ARE RESERVED.

GBC FILMS GROUP		4151 Anderson Road, Deerpark, WI 53522	
TITLE		DS60 CE Drive Side	
DATE		12/13/00	
DRAWN BY		N/A	
CHECKED BY		N/A	
APPROVED BY		N/A	
SCALE		070-02	



**PROPRIETARY**  
 GBC/PRO-TECH/AMERPHOT/ANY RIGHTS RESERVED  
 THIS DOCUMENT IS UNCLASSIFIED FOR THE UNITED STATES GOVERNMENT  
 PERMISSION IS GRANTED TO REPRODUCE THIS DOCUMENT  
 FOR UNLIMITED UNCLASSIFIED USE BY THE UNITED STATES GOVERNMENT  
 NO OTHER REPRODUCTION PERMITTED WITHOUT THE WRITTEN  
 PERMISSION OF GBC/PRO-TECH



501-1025  
 BEARING BLOCK  
 GREASE GROOVE  
 ZERK FITTING  
 BEARING BLOCK ASSEMBLY  
 020-007  
 ON THIS SIDE  
 (COLD SETTING)

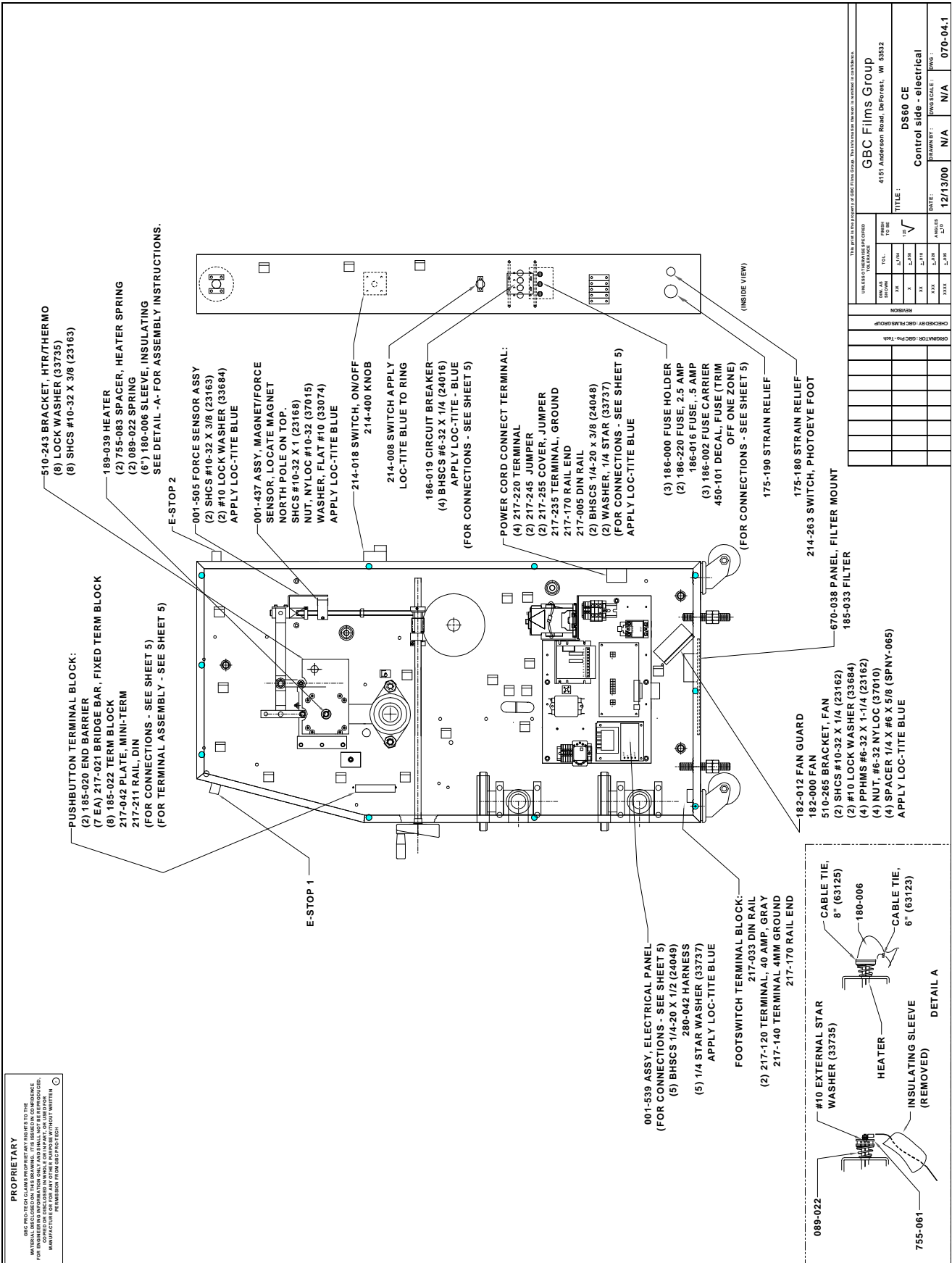
- (2) STRIP 1/2 x 2" (26354)
- (2) NYLOCK NUT 3/8-16 (37024)  
 APPLY HIGH TEMP GREASE
- (4) WASHER 1/2xØ (33012)
- (2) 629-011 LEVER, ROLL LIFT
- (2) 501-028 BLOCK, ROLL LIFT
- (4) 095-103 PIN, DOW EL
- (2) 629-010 LINK, ROLL PIVOT AXLE
- (4) SHCS 3/8-16 x 5/8 (23302)  
 APPLY LOC-TITE-BLUE
- (2) STRIP 3/8 x 2 1/2 (26337)  
 APPLY LOC-TITE-BLUE AND  
 HIGH TEMP GREASE
- (2) 089-018 SPRING, DIE
- (2) 290-260 LOCK COLLAR  
 ADJUST THIS COLLAR UNTIL  
 SPRING IS JUST ACTIVATED.  
 LOCK IN PLACE. (BOTH SIDES)
- (2) 629-017 LINK, LIFT ROD
- 430-008 W ORM
- (2) 040-003 BUSHING, BRONZE  
 KEY 3/16 X 3/16 X 1"
- 040-003 BUSHING
- (2) 325-210 CLEVIS, D-231-3
- (2) HEX NUT 1/2-20UNF (36160)  
 THREAD 629-017 TO BOTTOM OF THE CLEVIS.  
 BACK OUT 5 TURNS AND THEN LOCK IN  
 PLACE WITH HEX NUTS AT 325-210 CLEVIS S.  
 APPLY LOC-TITE BLUE
- (2) 629-014 LEVER, CLAMP, ASSY
- LOCATE BOLT HEAD TOWARD CABINET
- (4) 629-009 LINK, ROLL BRG BLK
- (4) STRIP 3/80 x 1 1/4 (26332)
- (4) NYLOC NUT 5/16-18 (37021)  
 APPLY W HITE LITHIUM GREASE
- (2) ZERK 90° (60104)  
 ALIGN ZERK HOLE TO GROOVE IN BEARING  
 (SEE BEARING BLOCK ASSEMBLY ABOVE)
- (2) 501-025 BLOCK, ROLL BRG  
 APPLY BLUE LOC TITE TO FASTENERS  
 APPLY #44 HIGH TEMP BEARING GREASE
- (4) 501-027 BLOCK, ROLL BRG GIB
- (8) SHCS 3/8-16 x 5/8 (23302)  
 APPLY LOC-TITE BLUE
- (2) 020-007 BEARING, MAIN ROLL UPPER
- (2) 026-000 FLANGE BEARING
- (4) HCS 1/2-13 x 1 1/2
- (4) NYLOCK 1/2-13 NE (37030)  
 GREASE ZERK FACING DOWN  
 (BOTH SIDES OF MACHINE)
- (2) 040-035 BUSHING  
 APPLY W HITE LITHIUM GREASE
- 465-034 KNOB, ROLL LIFT  
 (REF ONLY HANDLE CONTAINED IN ACC. PACK)
- 510-232 BRACKET, CRANK LIFT
- (6) 5/16 FLAT W WASHER (33006)
- (3) NYLOCK NUT 5/16-18 (37021)
- 026-004 BUSHING  
 APPLY W HITE LITHIUM GREASE
- 710-087 SHAFT, CRANK
- 501-039 BLOCK, CRANK SHAFT
- 040-049 BUSHING
- 032-013 W ASHER, THRUST
- (2) BHSCS 3/8-16 X 5/8 (24089)
- SHCS 5/16-18 X 1 3/4 (23260)
- FIN HX NUT 5/16-18 (36104)
- 430-005 GEAR, W ORM
- (2) KEY 1/4x 1/4 x 2" (47813-1)  
 APPLY W HITE LITHIUM GREASE
- 710-084 SHAFT, LIFT TORQUE
- (2) 290-280 CLAMP COLLAR

REVISED	DATE	BY	DESCRIPTION

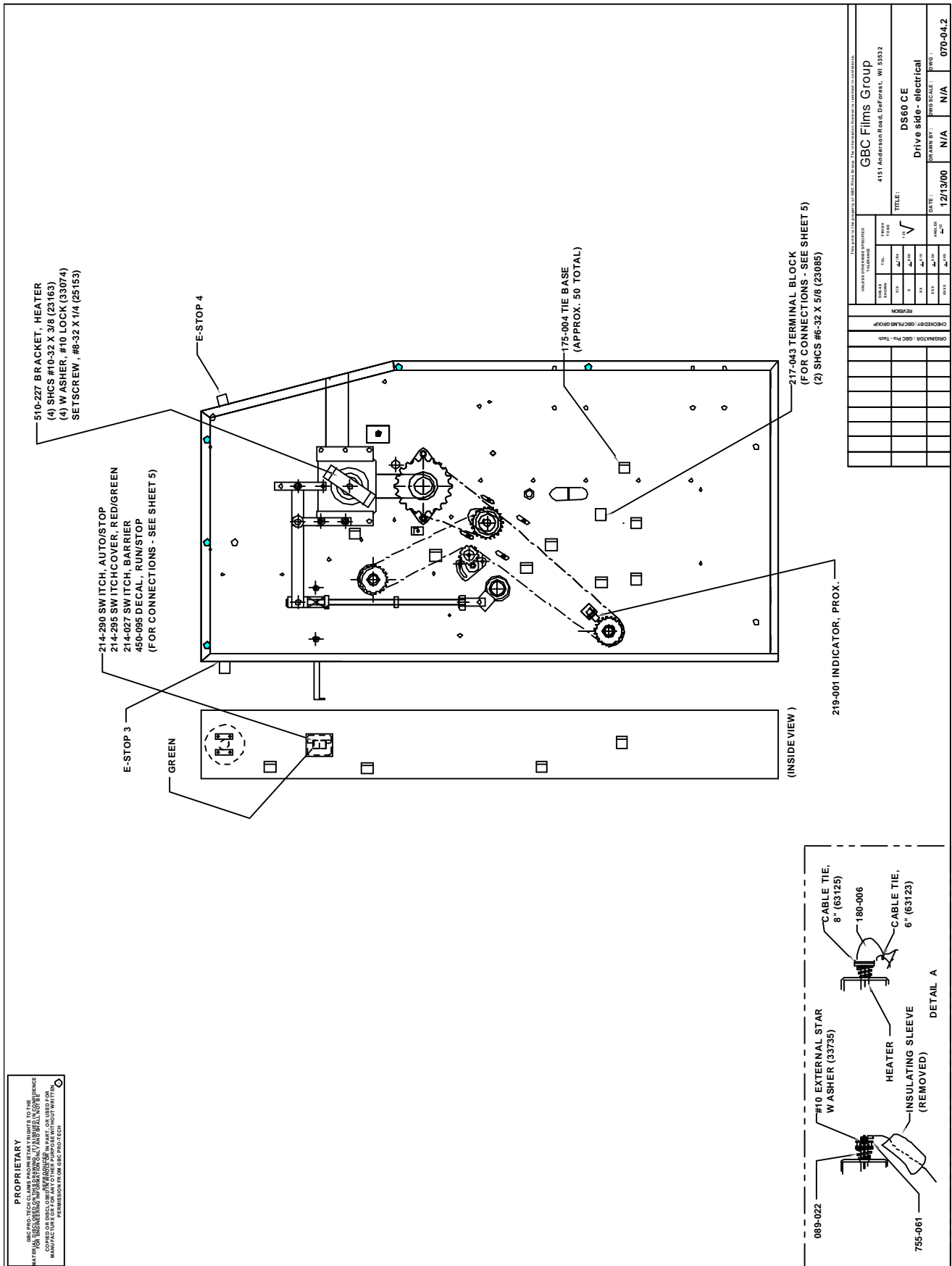
**GBC Films Group**  
 4151 Anderson Road, Deer Forest, WI 53522

TITLE: DS60 CE  
 Control side

DATE: 12/13/00  
 DRAWN BY: N/A  
 CHECKED BY: N/A  
 SCALE: N/A  
 PART NO: 070-03

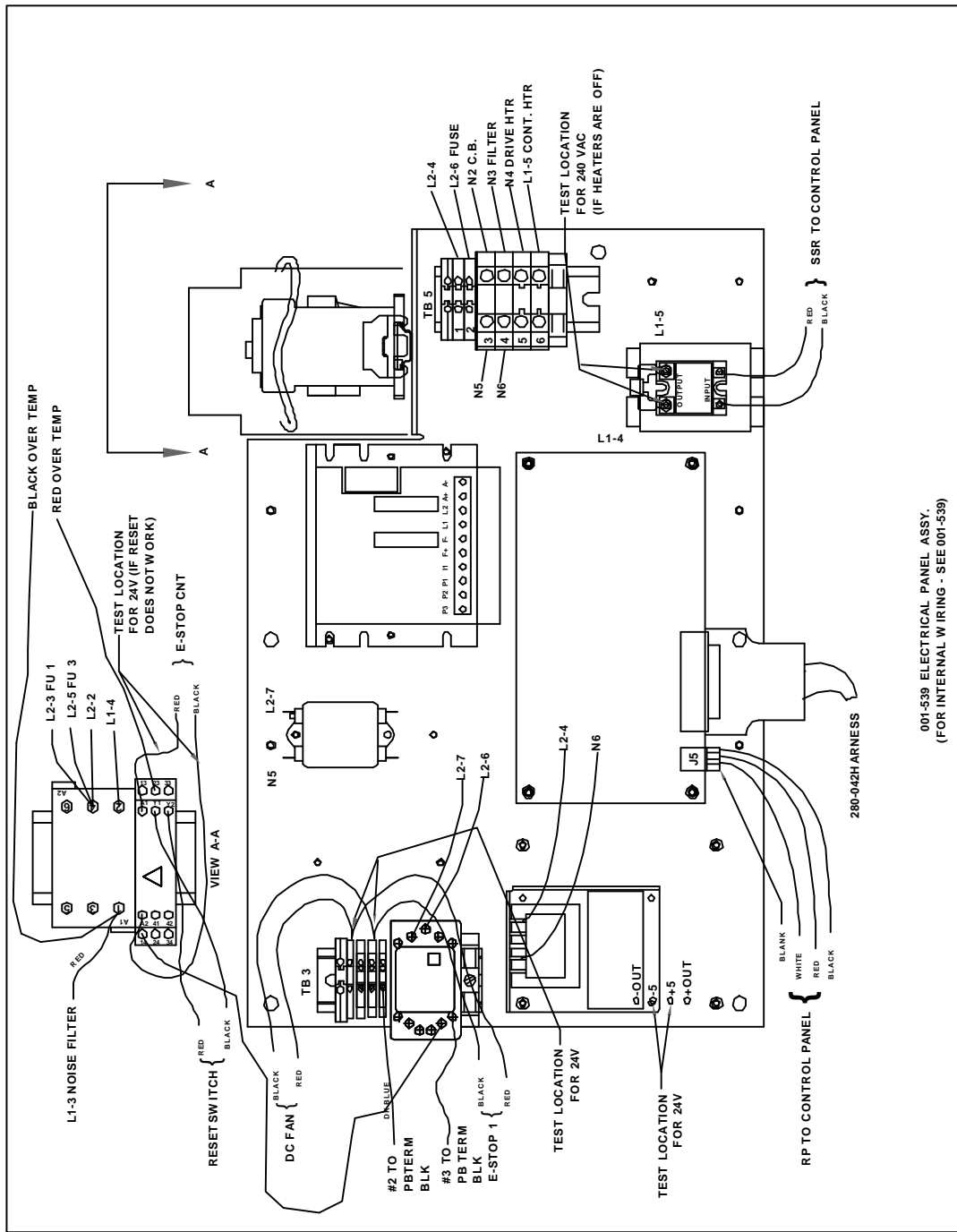






**PROPRIETARY**  
 GBC PRO-TECH CLAIMS PROPRIETARY RIGHTS TO THE  
 DESIGN, INVENTION AND MANUFACTURE OF THE  
 MANUFACTURED OR CONSTRUCTED PARTS AND  
 PERMITTED BY GBC PRO-TECH

GBC Films Group 4151 Anderson Road, Deer Creek, WI 53522	
TITLE: DS60 CE Drive side - electrical	DATE: 12/13/00
DRAWN BY: N/A	PROB SCALE: N/A
070-04.2	



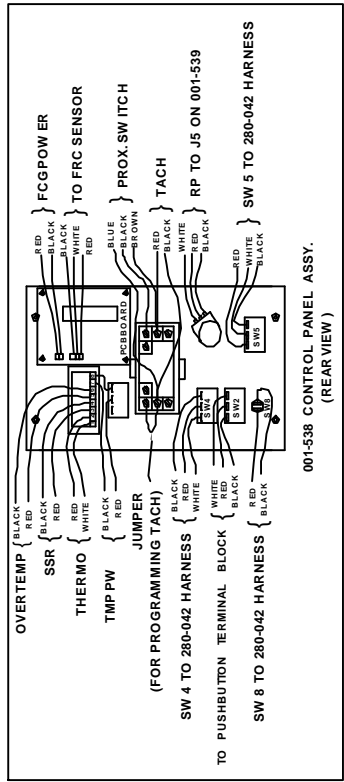
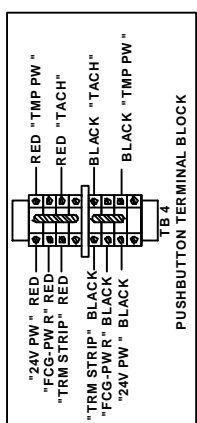
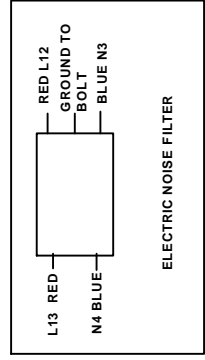
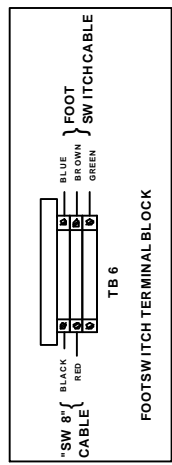
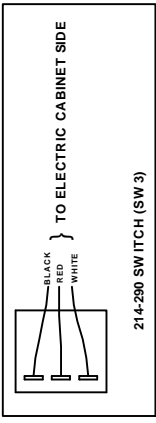
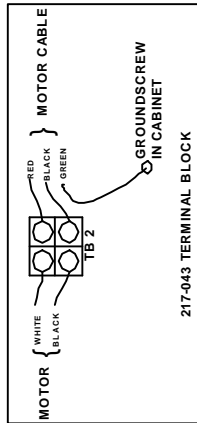
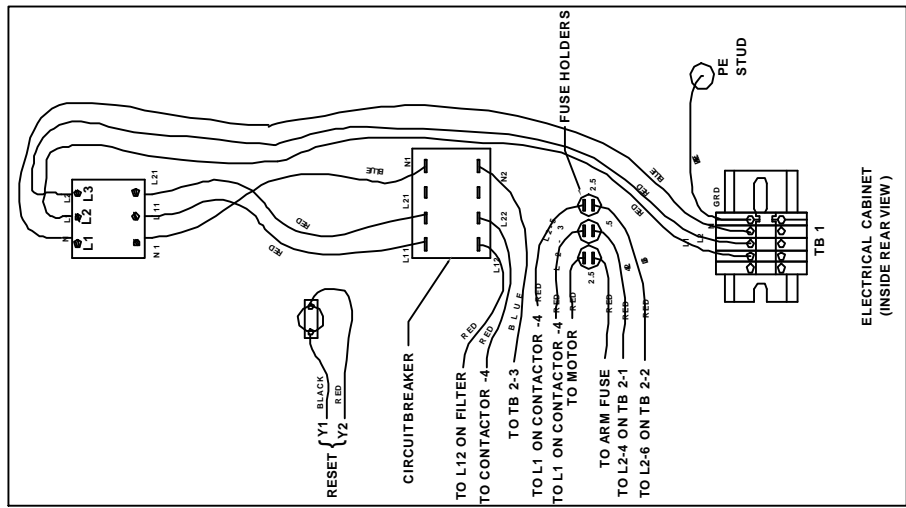
001-539 ELECTRICAL PANEL ASSY. (FOR INTERNAL WIRING - SEE 001-539)

**PROPRIETARY**

GBC FILMS GROUP AND ITS DIVISIONS ARE THE SOLE PROPRIETORS OF THE INFORMATION CONTAINED HEREIN. THIS INFORMATION IS UNCLASSIFIED AND IS NOT TO BE REPRODUCED OR TRANSMITTED IN ANY FORM OR BY ANY MEANS, ELECTRONIC OR MECHANICAL, INCLUDING PHOTOCOPYING, RECORDING, OR BY ANY INFORMATION STORAGE AND RETRIEVAL SYSTEM. FOR MORE INFORMATION CONTACT THE MANUFACTURING ENGINEER AT THE ADDRESS BELOW.

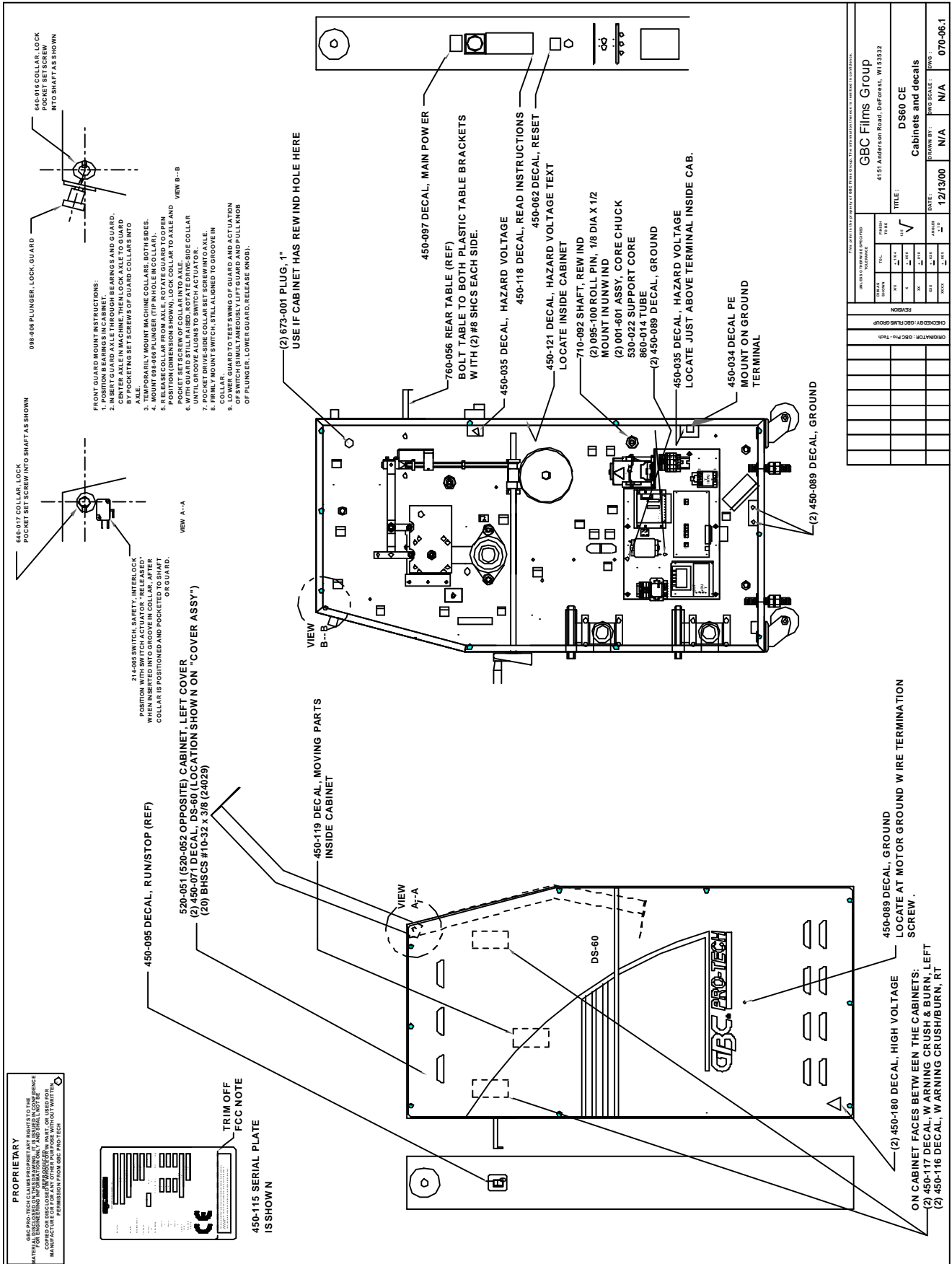
UNLESS OTHERWISE SPECIFIED		GBC Films Group	
DRAWN BY: [blank]		4151 Anderson Road, DeForest, WI 53532	
CHECKED BY: [blank]		TITLE: DS60 CE	
DESIGNED BY: [blank]		Electrical panel assembly 001-539	
DATE:	12/13/00	SCALE:	N/A
APP'D:		DATE:	07/05/01

**PROPRIETARY**  
 GBC FILMS GROUP PROPRIETARY INFORMATION. ALL RIGHTS RESERVED. THIS DOCUMENT IS FOR INTERNAL USE ONLY AND IS NOT TO BE REPRODUCED OR TRANSMITTED IN ANY FORM OR BY ANY MEANS, ELECTRONIC OR MECHANICAL, INCLUDING PHOTOCOPYING, RECORDING, OR BY ANY INFORMATION STORAGE AND RETRIEVAL SYSTEM. PERMISSION TO MAKE A COPY OF THIS DOCUMENT FOR PERSONAL USE ONLY IS GRANTED BY GBC FILMS GROUP.

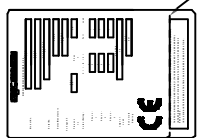


REVISION		DATE	BY	CHKD	APP'D
		12/13/00	N/A	N/A	070-052
CHECKED BY: GBC FILMS GROUP DRAWN BY: GBC FILMS GROUP TITLE: DS60 CE Wire assembly PROJECT: 4151 Anderson Road, DeForest, WI 53532 GBC FILMS GROUP					

- NOTES:
1. ELECTRIC SCHEMATIC IS 810-046.
  2. WIRING HARNESS IS 280-042.



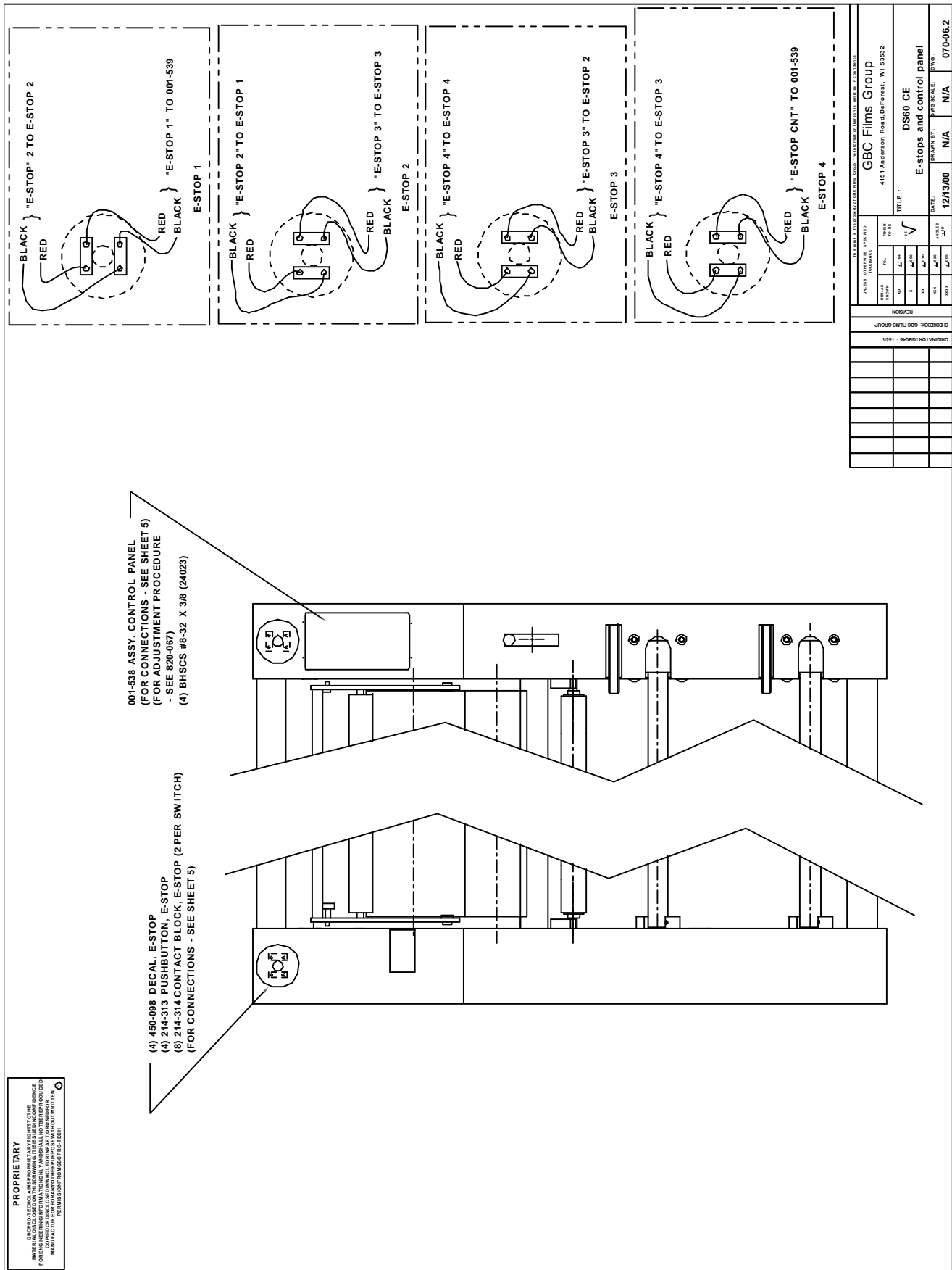
**PROPRIETARY**  
 GBC PRO-TECH CLAIMS PROPRIETARY RIGHTS TO THE  
 NAME "GBC PRO-TECH" AND THE "GBC PRO-TECH" SOURCE  
 MARKING AND THE "GBC PRO-TECH" AND "GBC PRO-TECH"  
 MANUFACTURING LOGO FOR ANY OTHER MANUFACTURER  
 WITHOUT THE WRITTEN PERMISSION FROM GBC PRO-TECH



450-115 SERIAL PLATE IS SHOW N

TRIM OFF FCC NOTE

GBC Films Group		4151 Anderson Road, DeForest, WI 53532	
TITLE: D860 CE		Cabinets and decals	
DRAWN BY: PING SCALE: 1/2"		DATE: 12/13/00	
CHECKED BY: GBC FILMS GROUP		DRAWN BY: PING SCALE: 1/2"	
OPERATOR: GBC FILMS GROUP		DATE: 12/13/00	
REVISION		DRAWN BY: PING SCALE: 1/2"	
NO.	DATE	BY	REASON
1	12/13/00	PING	INITIAL DESIGN



**PROPRIETARY**  
 GBC FILMS GROUP  
 4151 Anderson Road, Deer Forest, WI 53522  
 TEL: 414-224-1100 FAX: 414-224-1101  
 WWW.GBCFILMS.COM  
 © 2000 GBC FILMS GROUP

GBC FILMS GROUP		4151 Anderson Road, Deer Forest, WI 53522	
TITLE: DS60 CE		DRAWN BY: N/A	
E-stops and control panel		DATE: 12/13/00	
REVISION		SCALE: N/A	
CREATED BY: GBC FILMS GROUP		PART NO: 070-06.2	
ORGANIZATION: GBC FILMS GROUP		PROJECT: DS60 CE	
DESIGNED BY: GBC FILMS GROUP		CHECKED BY: GBC FILMS GROUP	
DRAWN BY: GBC FILMS GROUP		DATE: 12/13/00	
SCALE: N/A		PART NO: 070-06.2	