

EAGLES PARTS LIST

All parts in each illustration are keyed with an index number for reference to the respective part number, part name, and quantity in the parts list.

When ordering service parts, always include the following information:

Machine Model Number

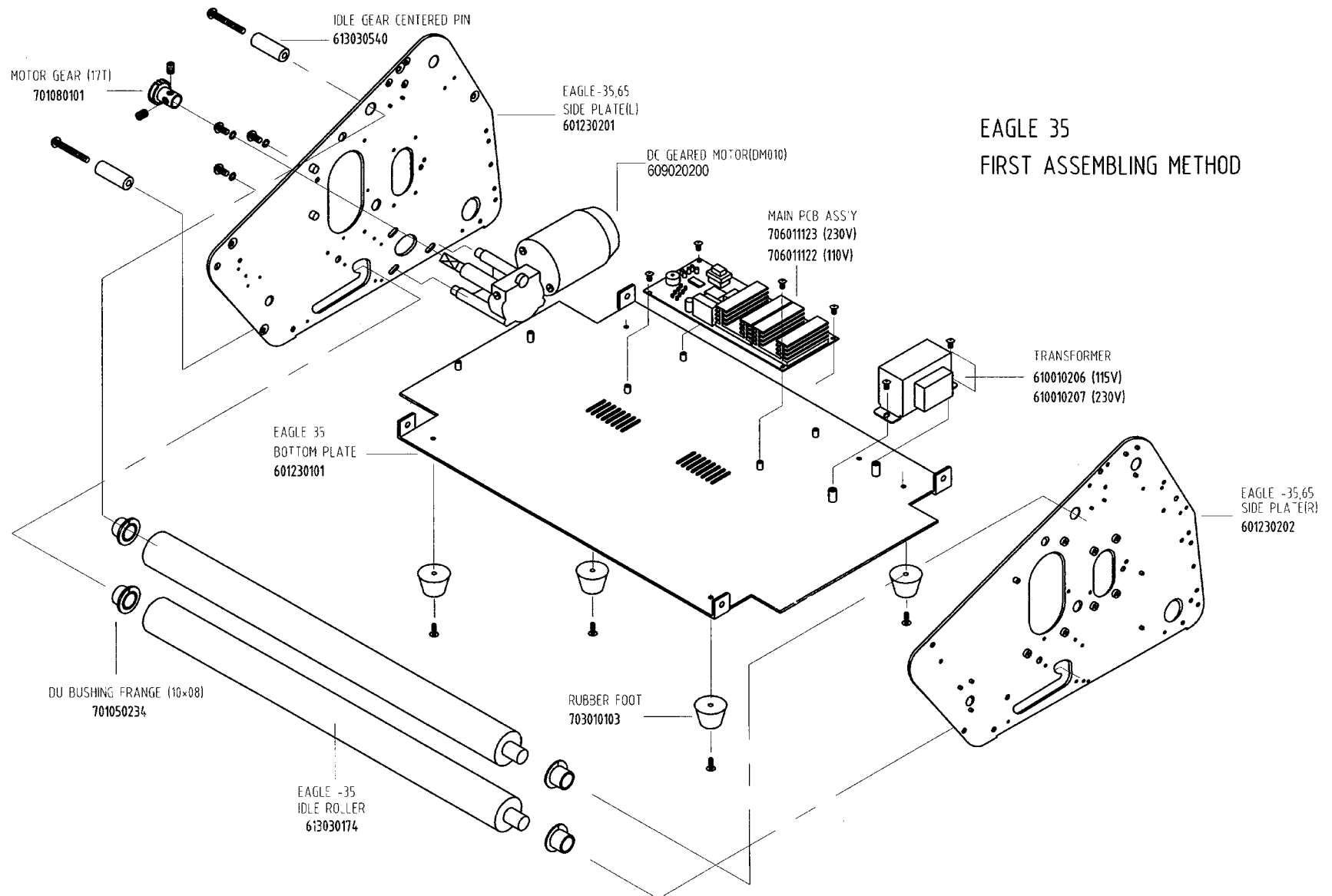
Machine Serial Number

Part Number

Part Name

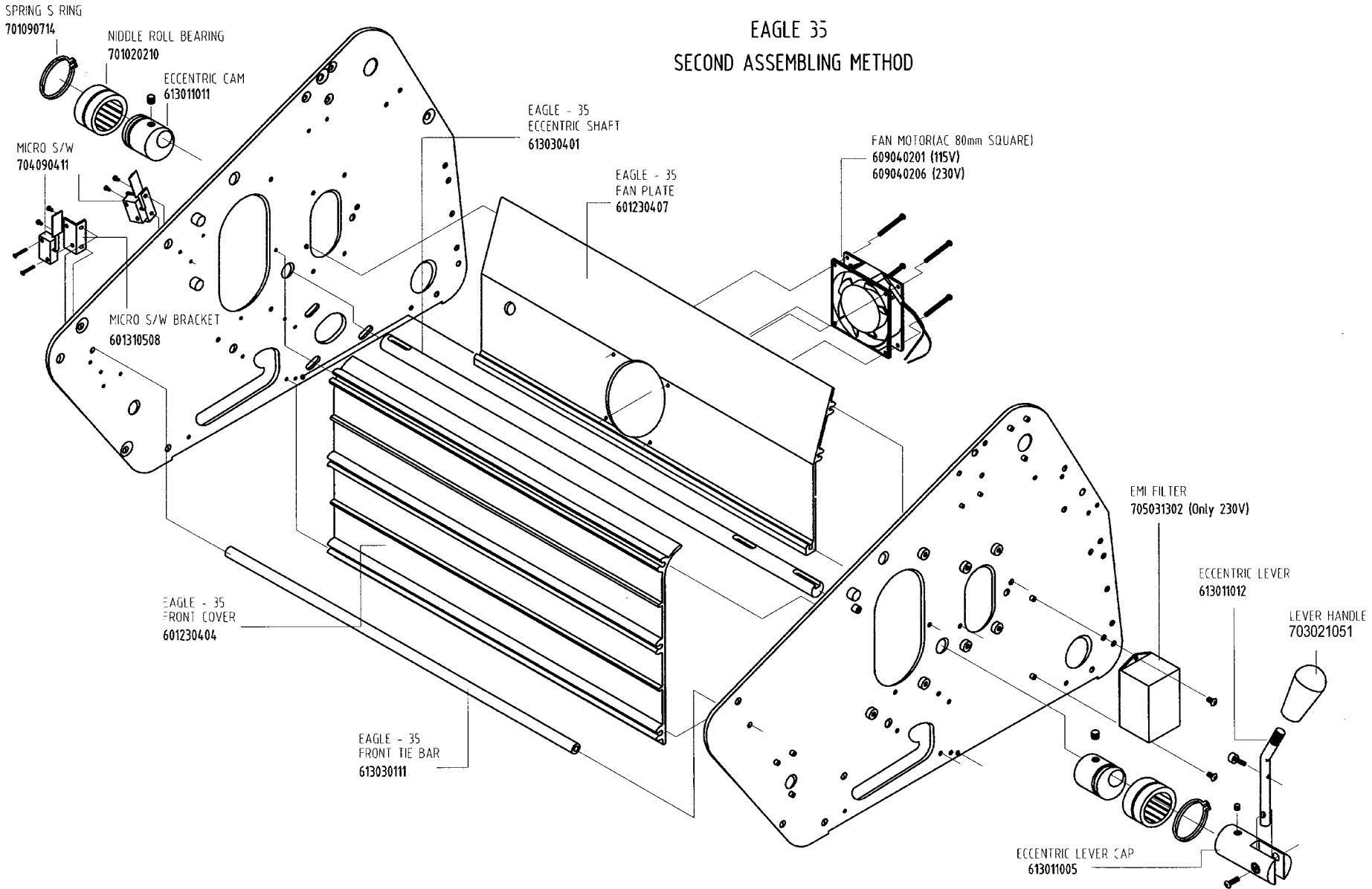
Quantity Required

Note: The Service Parts Department does not stock all hardware; to avoid delay, standard hardware shown in the parts list should be purchased locally.

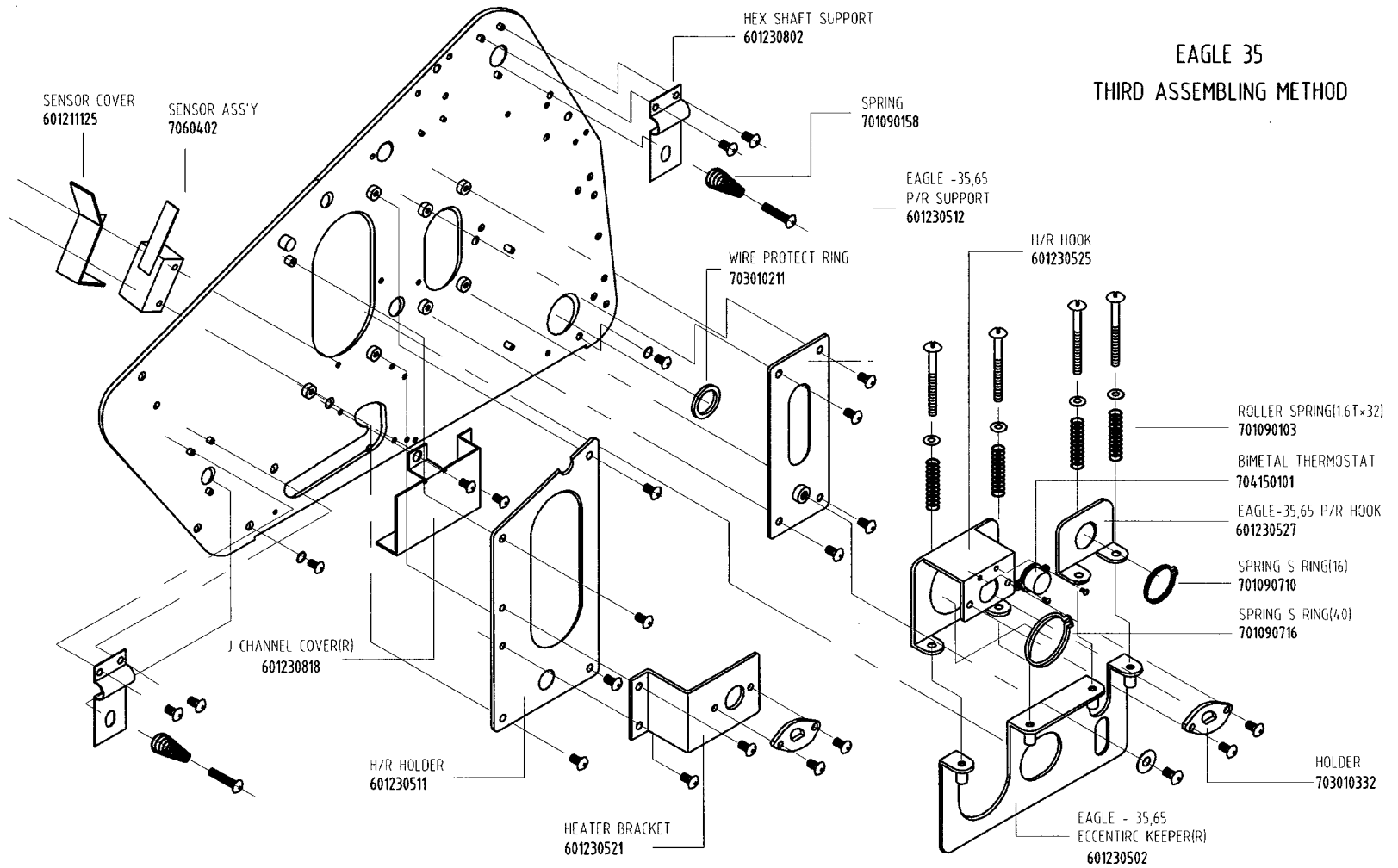


EAGLE 35 FIRST ASSEMBLING METHOD

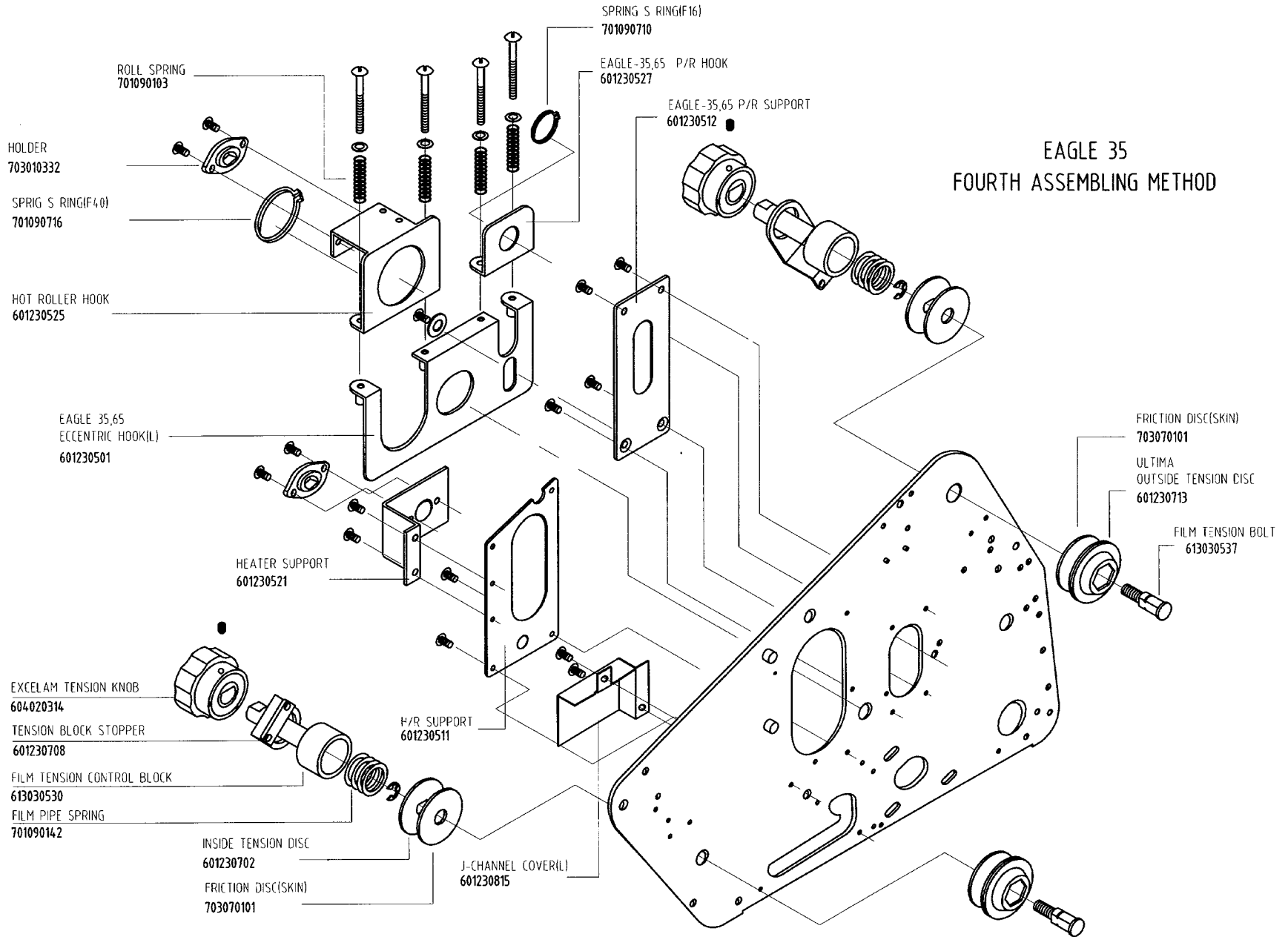
EAGLE 35 SECOND ASSEMBLING METHOD



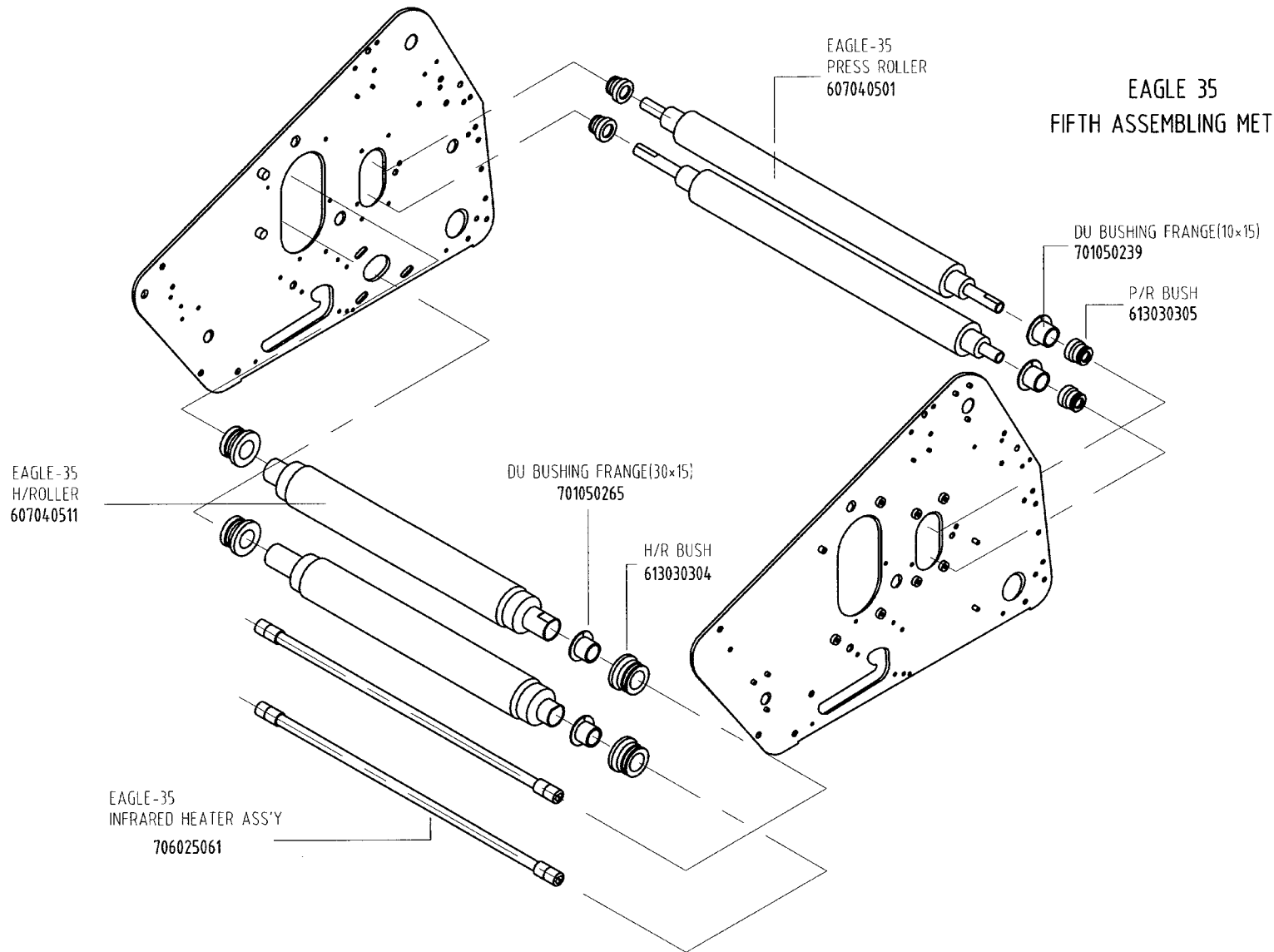
EAGLE 35 THIRD ASSEMBLING METHOD



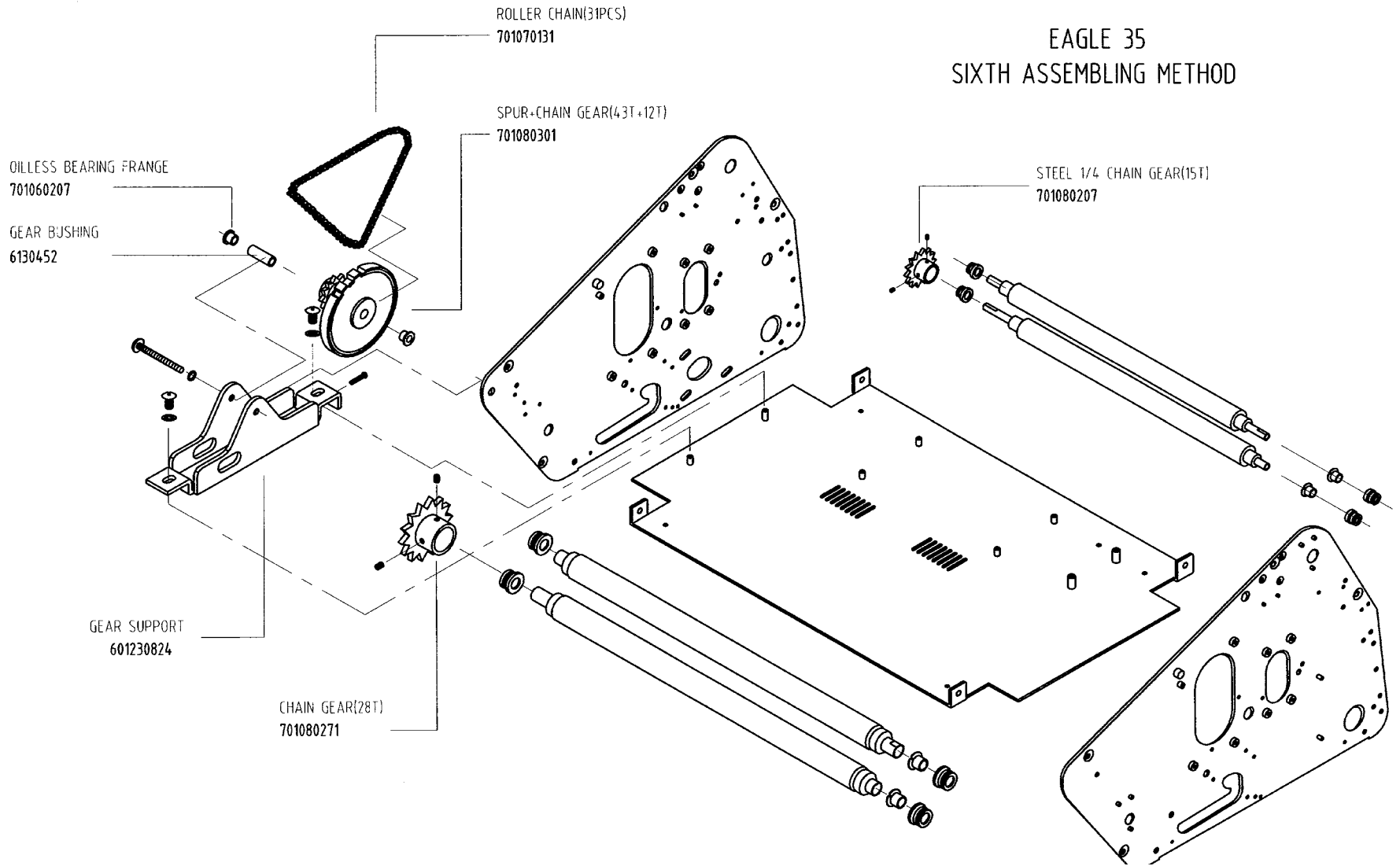
EAGLE 35 FOURTH ASSEMBLING METHOD



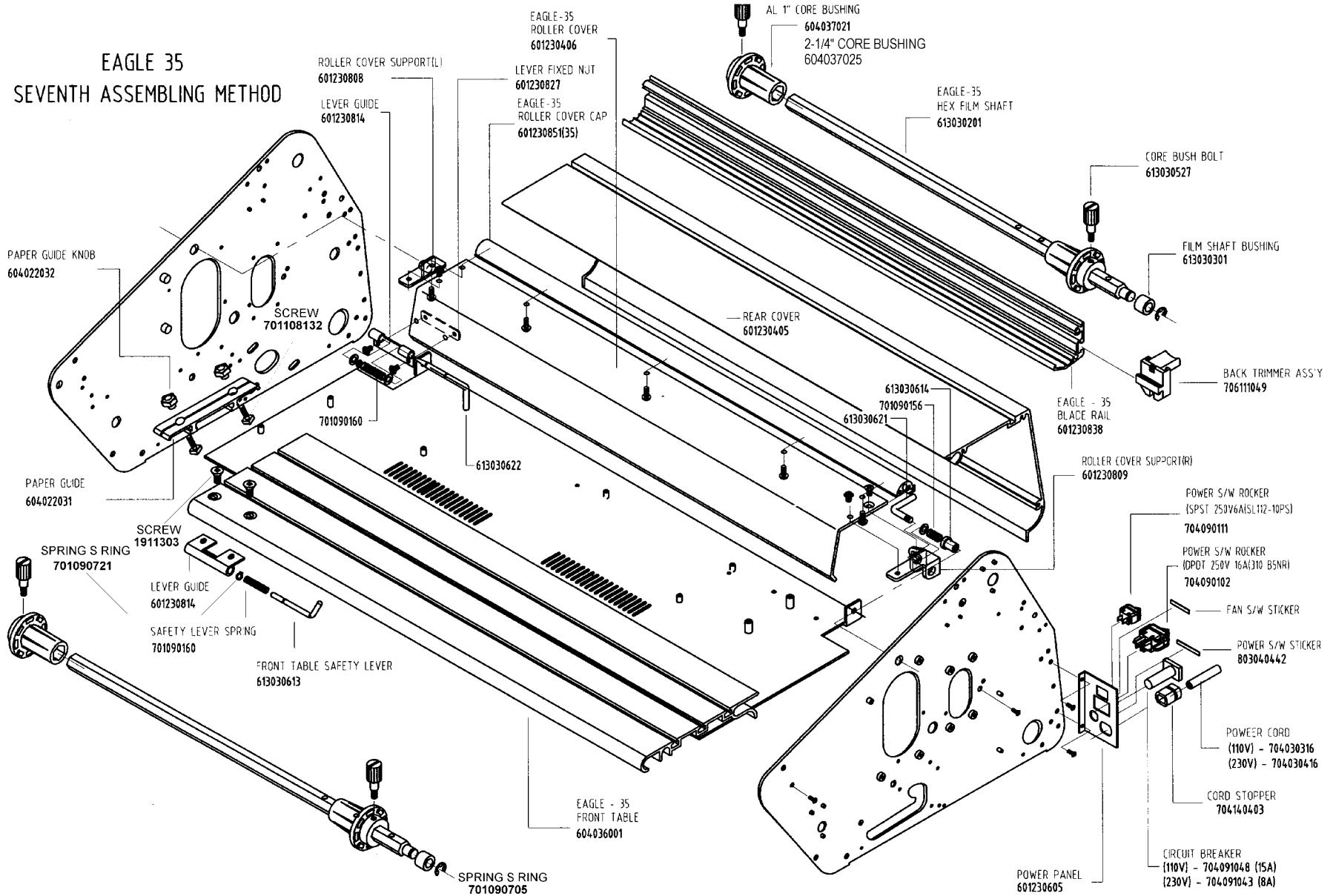
EAGLE 35 FIFTH ASSEMBLING METHOD



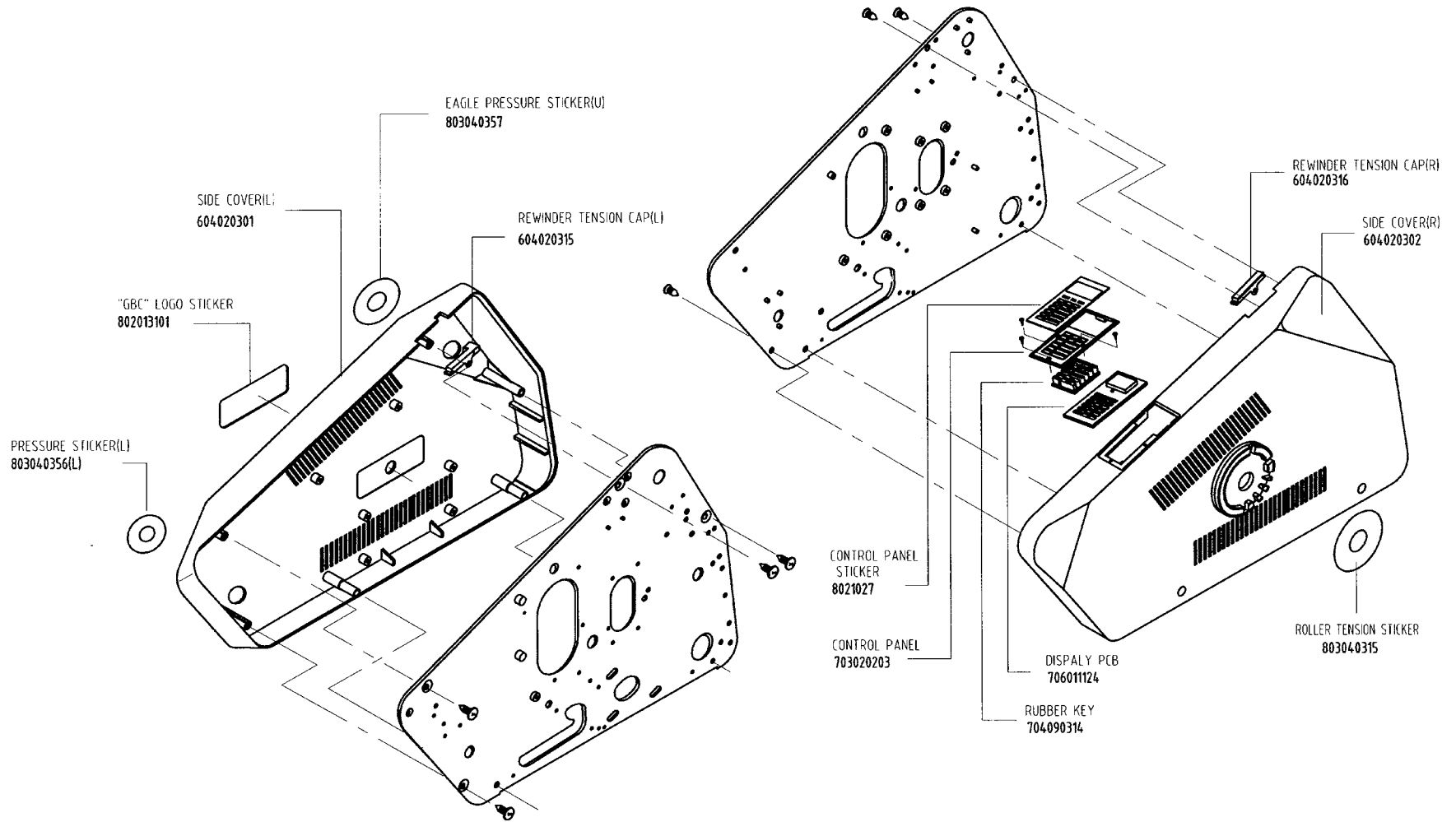
EAGLE 35 SIXTH ASSEMBLING METHOD



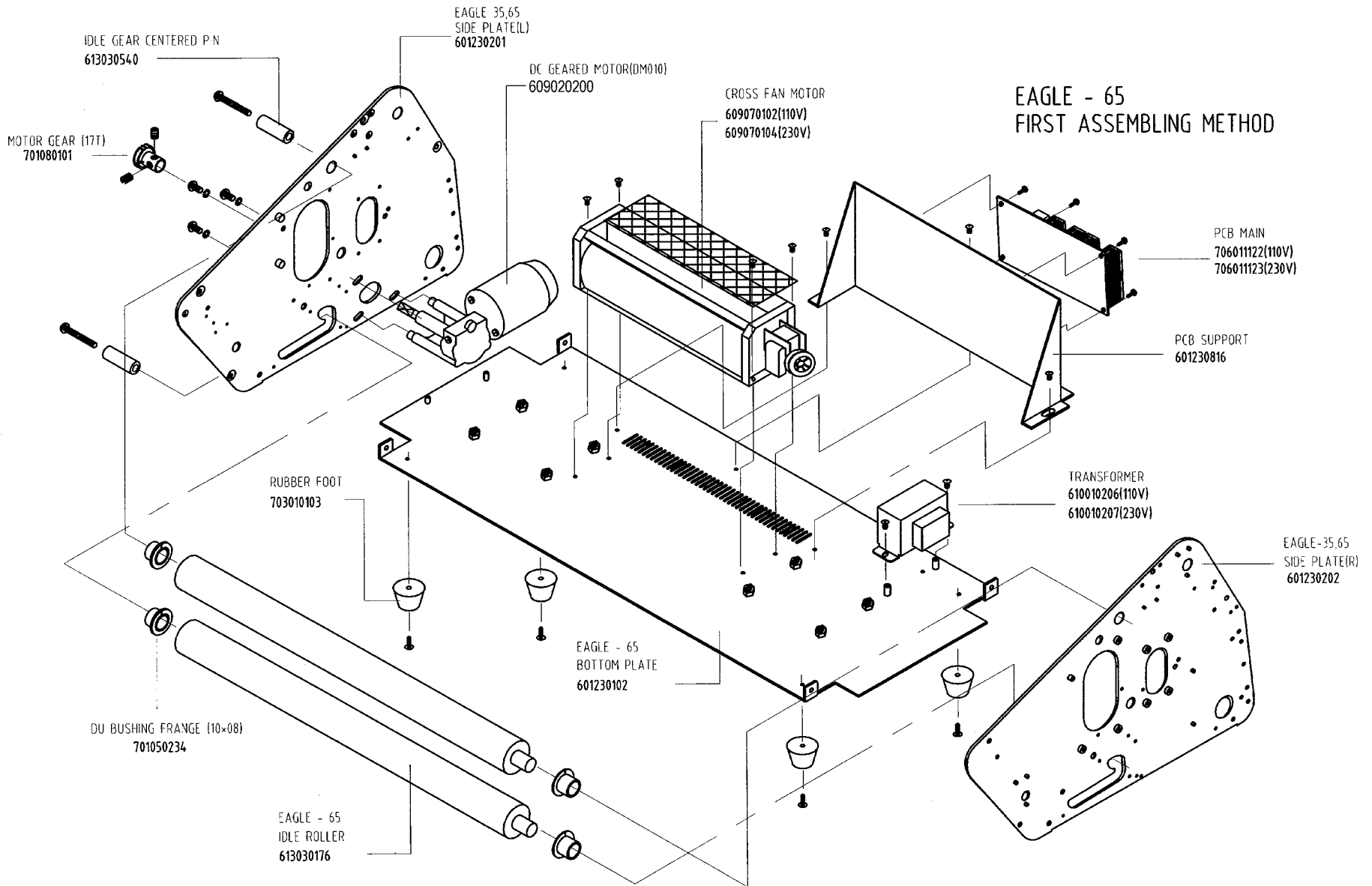
EAGLE 35 SEVENTH ASSEMBLING METHOD

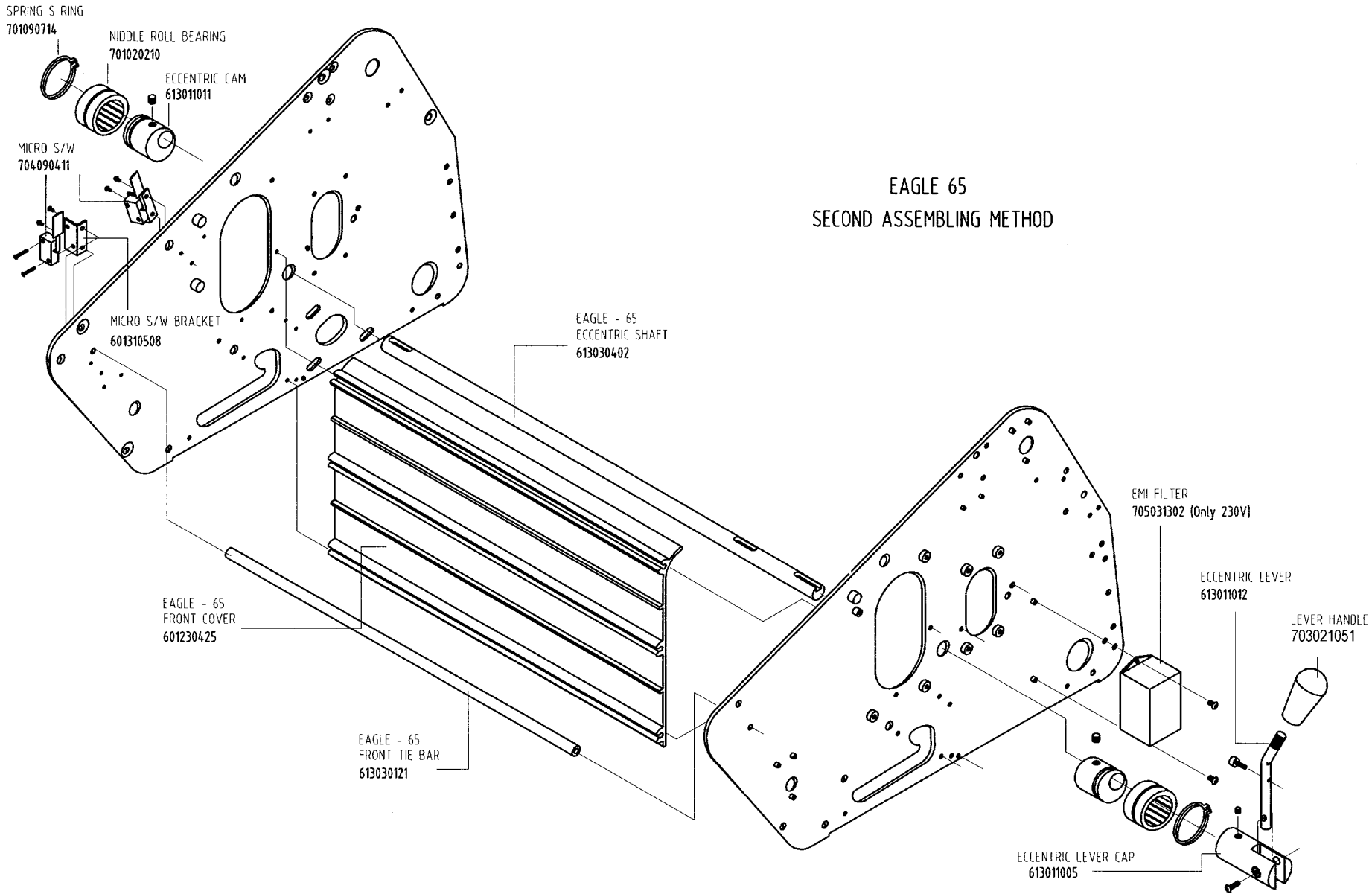


EAGLE 35 EIGHTH ASSEMBLING METHOD

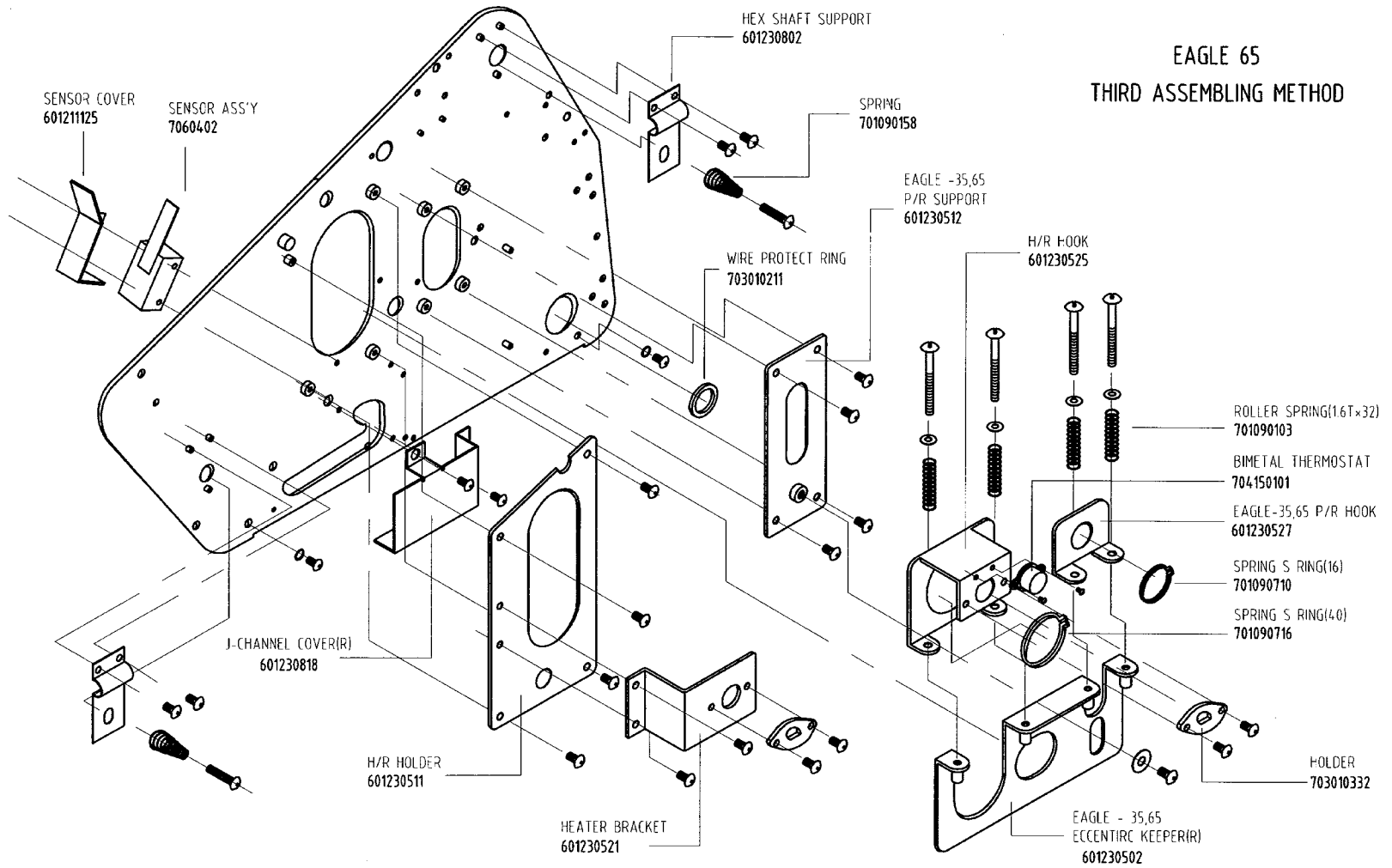


EAGLE - 65 FIRST ASSEMBLING METHOD

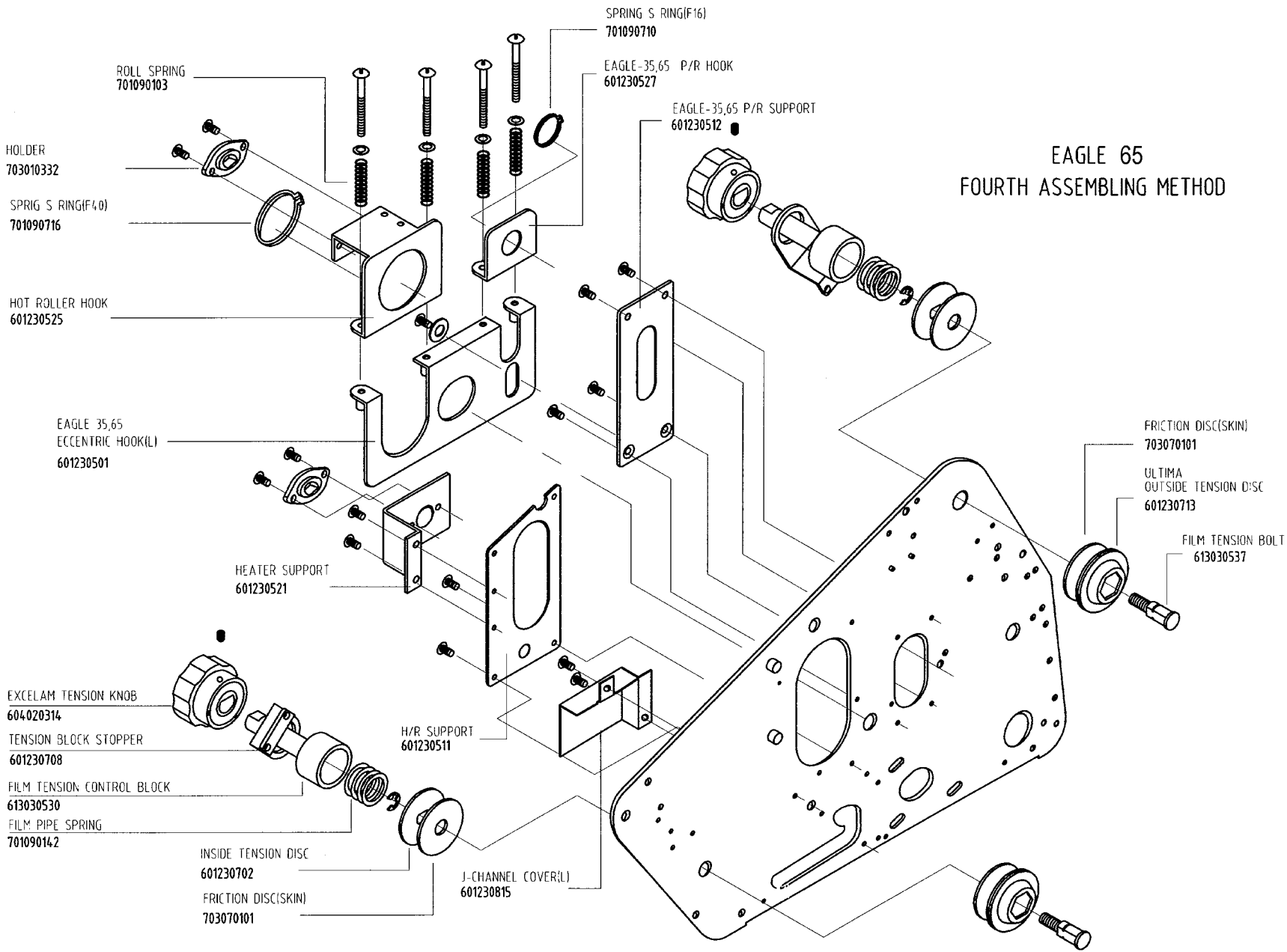




EAGLE 65 THIRD ASSEMBLING METHOD



EAGLE 65 FOURTH ASSEMBLING METHOD



ROLL SPRING
701090103

HOLDER
703010332

SPRING S RING(F4.0)
701090716

HOT ROLLER HOOK
601230525

EAGLE 35,65
ECCENTRIC HOOK(L)
601230501

HEATER SUPPORT
601230521

EXCELAM TENSION KNOB
604.020314

TENSION BLOCK STOPPER
601230708

FILM TENSION CONTROL BLOCK
613030530

FILM PIPE SPRING
701090142

INSIDE TENSION DISC
601230702

FRICION DISC(SKIN)
703070101

H/R SUPPORT
601230511

J-CHANNEL COVER(L)
601230815

SPRING S RING(F16)
701090710

EAGLE-35,65 P/R HOOK
601230527

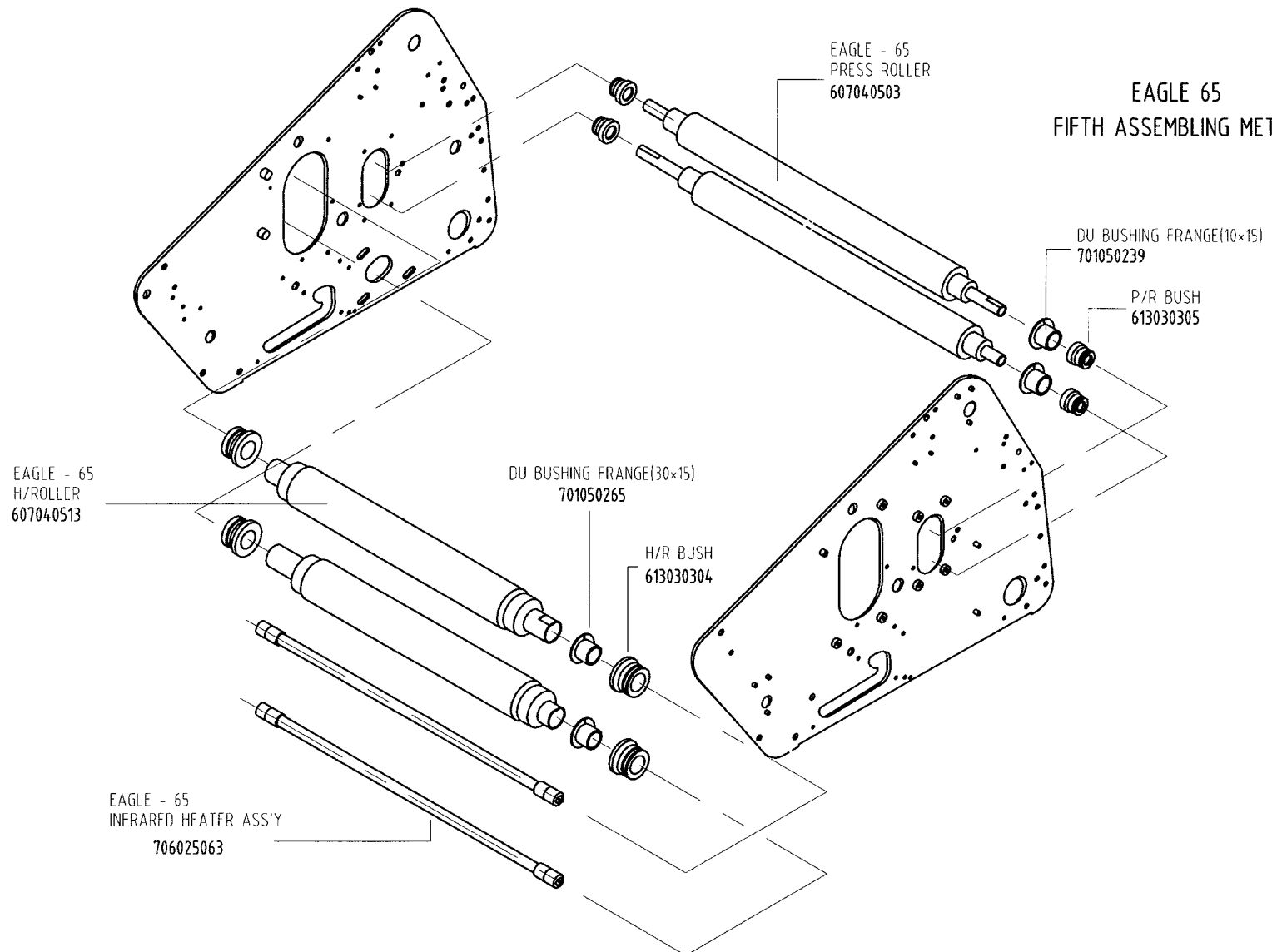
EAGLE-35,65 P/R SUPPORT
601230512

FRICION DISC(SKIN)
703070101

ULTIMA
OUTSIDE TENSION DISC
601230713

FILM TENSION BOLT
613030537

EAGLE 65 FIFTH ASSEMBLING METHOD



EAGLE - 65
PRESS ROLLER
607040503

EAGLE - 65
H/R ROLLER
607040513

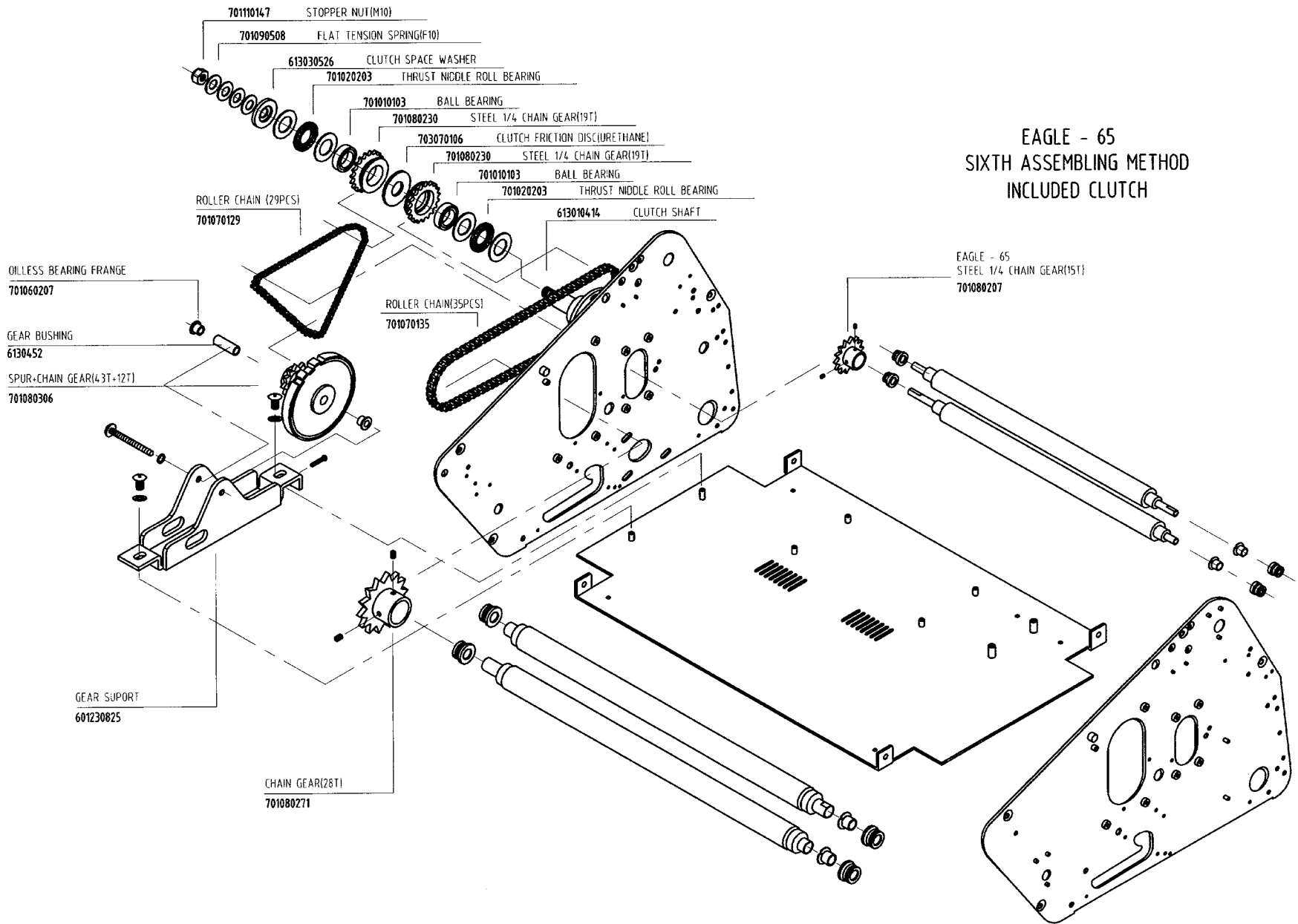
DU BUSHING FRANGE(30x15)
701050265

H/R BUSH
613030304

EAGLE - 65
INFRARED HEATER ASS'Y
706025063

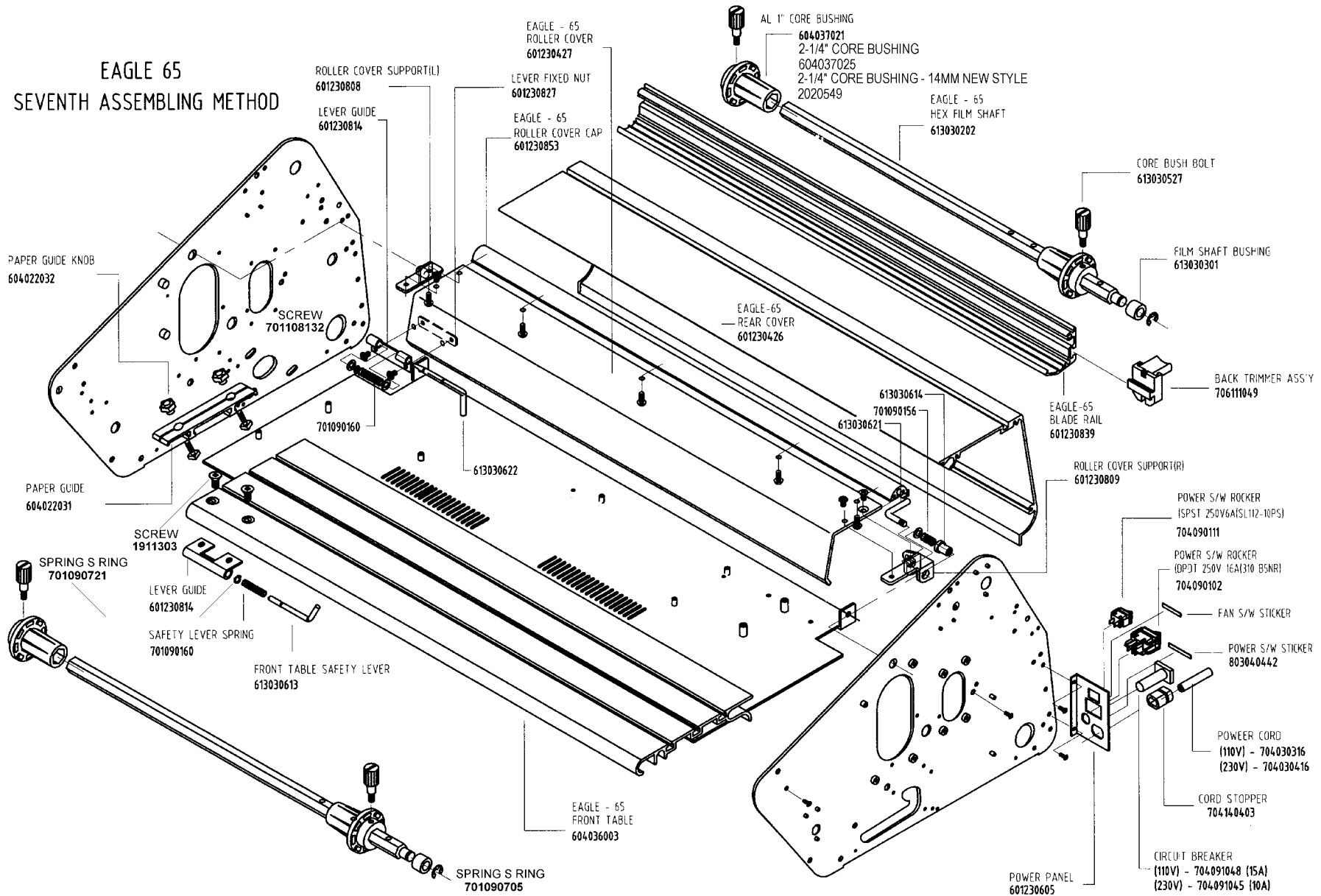
DU BUSHING FRANGE(10x15)
701050239

P/R BUSH
613030305



EAGLE - 65
SIXTH ASSEMBLING METHOD
INCLUDED CLUTCH

EAGLE 65 SEVENTH ASSEMBLING METHOD



PAPER GUIDE KNOB
604022032

ROLLER COVER SUPPORT(L)
601230808
LEVER GUIDE
601230814

EAGLE - 65
ROLLER COVER
601230427
LEVER FIXED NUT
601230827
EAGLE - 65
ROLLER COVER CAP
601230853

AL 1" CORE BUSHING
604037021
2-1/4" CORE BUSHING
604037025
2-1/4" CORE BUSHING - 14MM NEW STYLE
2020549
EAGLE - 65
HEX FILM SHAFT
613030202

CORE BUSH BOLT
613030527

FILM SHAFT BUSHING
613030301

BACK TRIMMER ASS'Y
70611049

SCREW
701108132

EAGLE-65
REAR COVER
601230426

EAGLE-65
BLADE RAIL
601230839

PAPER GUIDE
604022031

SCREW
1911303

613030614
701090156
613030621

ROLLER COVER SUPPORT(R)
601230809

POWER S/W ROCKER
ISPST 250V6A1SL112-10PSI
704090111

POWER S/W ROCKER
DPST 250V 16A(310 B5NR)
704090102

SPRING S RING
701090721

LEVER GUIDE
601230814

SAFETY LEVER SPRING
701090160

FRONT TABLE SAFETY LEVER
613030613

FAN S/W STICKER

POWER S/W STICKER
803040442

EAGLE - 65
FRONT TABLE
604036003

POWER CORD
(110V) - 704030316
(230V) - 704030416

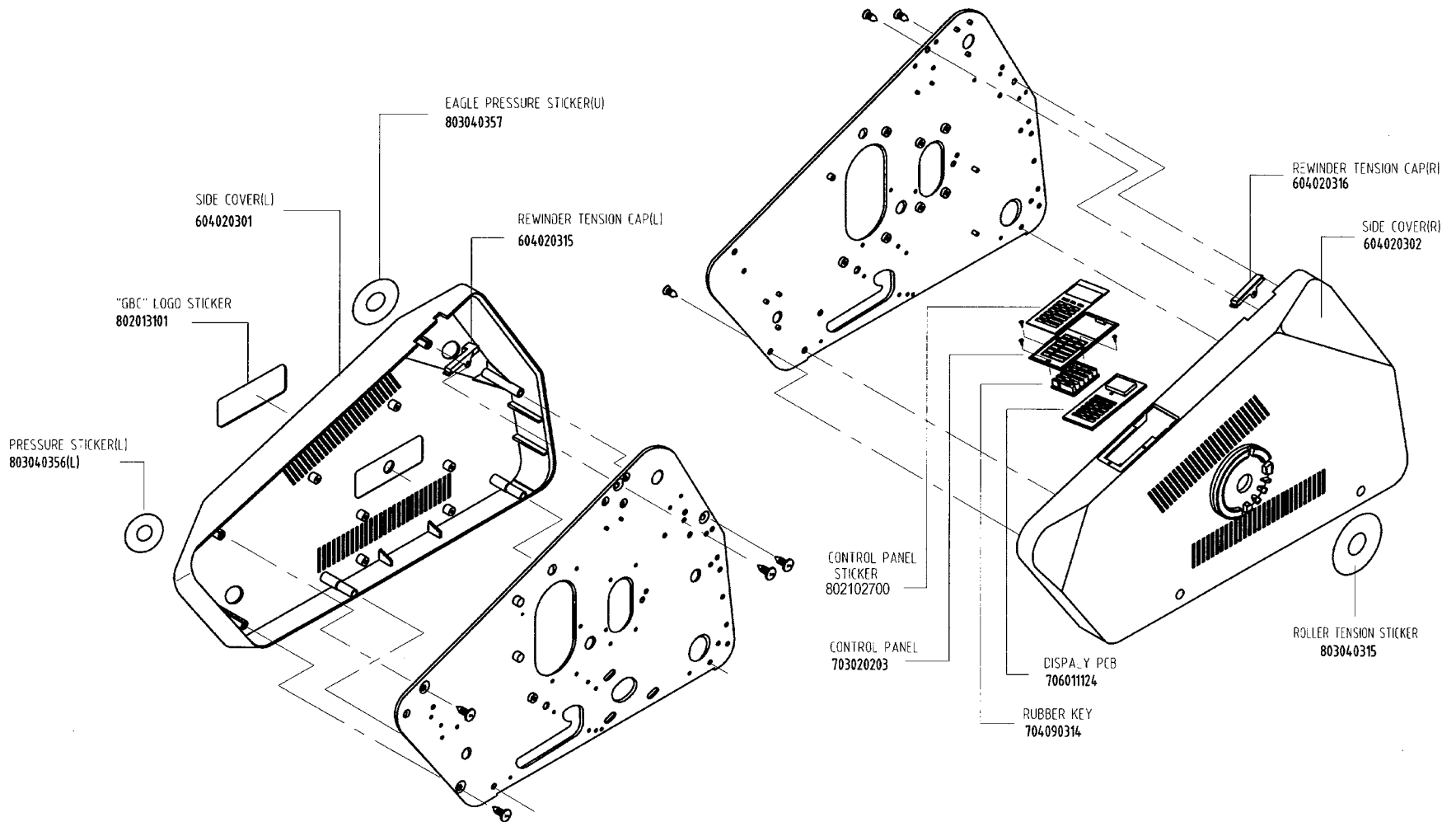
CORD STOPPER
704140403

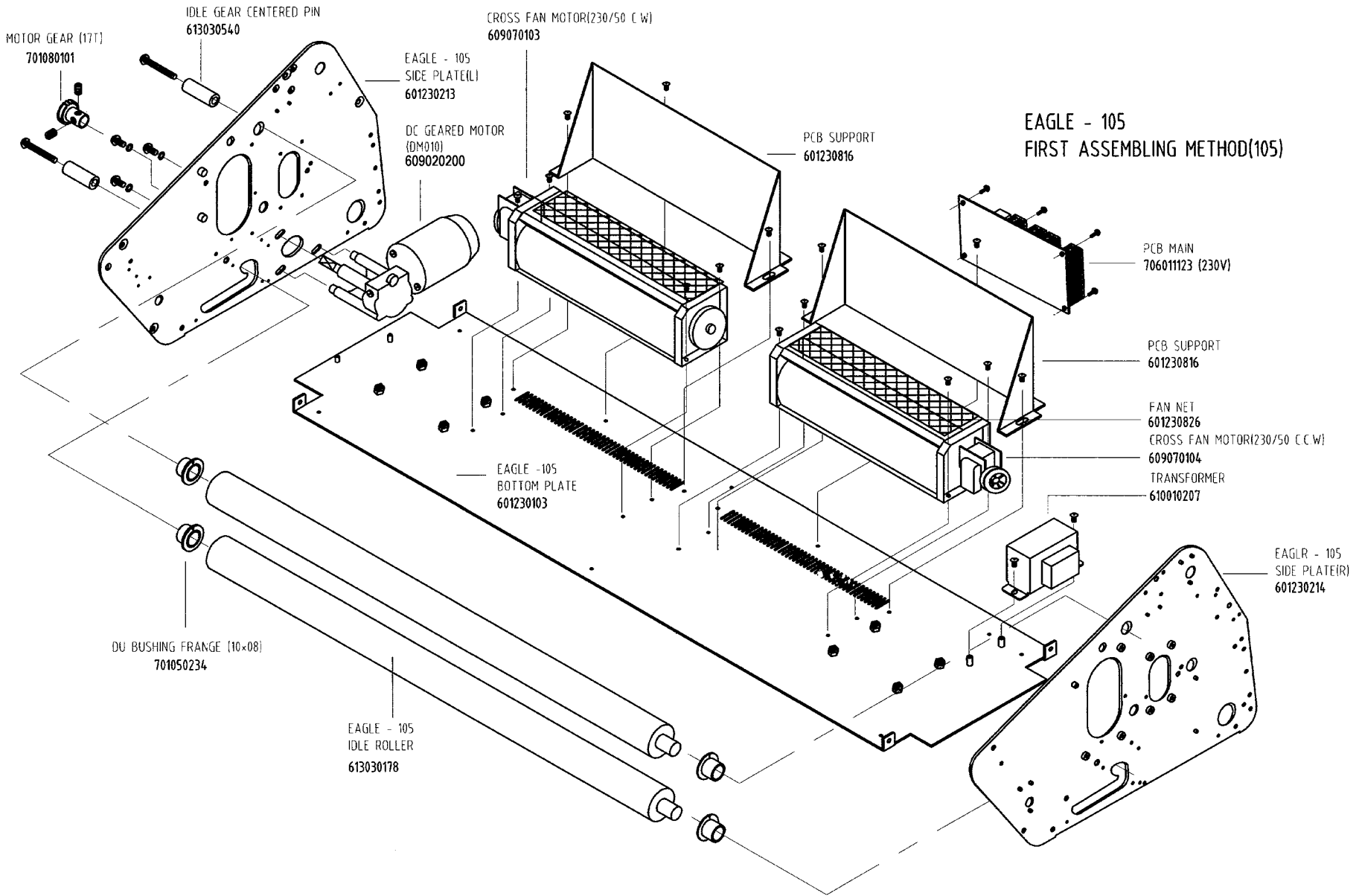
SPRING S RING
701090705

CIRCUIT BREAKER
(110V) - 704091048 (15A)
(230V) - 704091045 (10A)

POWER PANEL
601230605

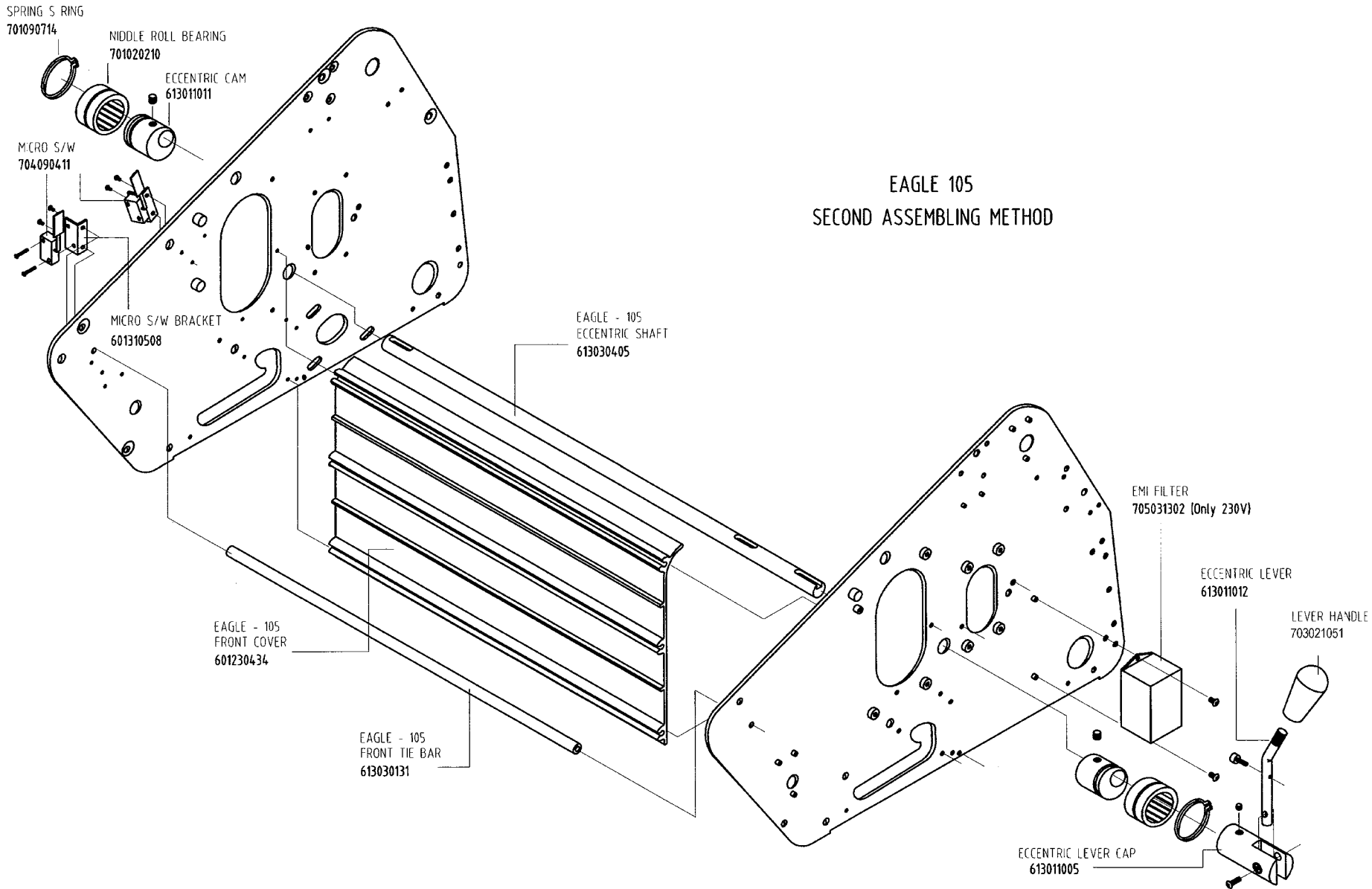
EAGLE 65 EIGHTH ASSEMBLING METHOD



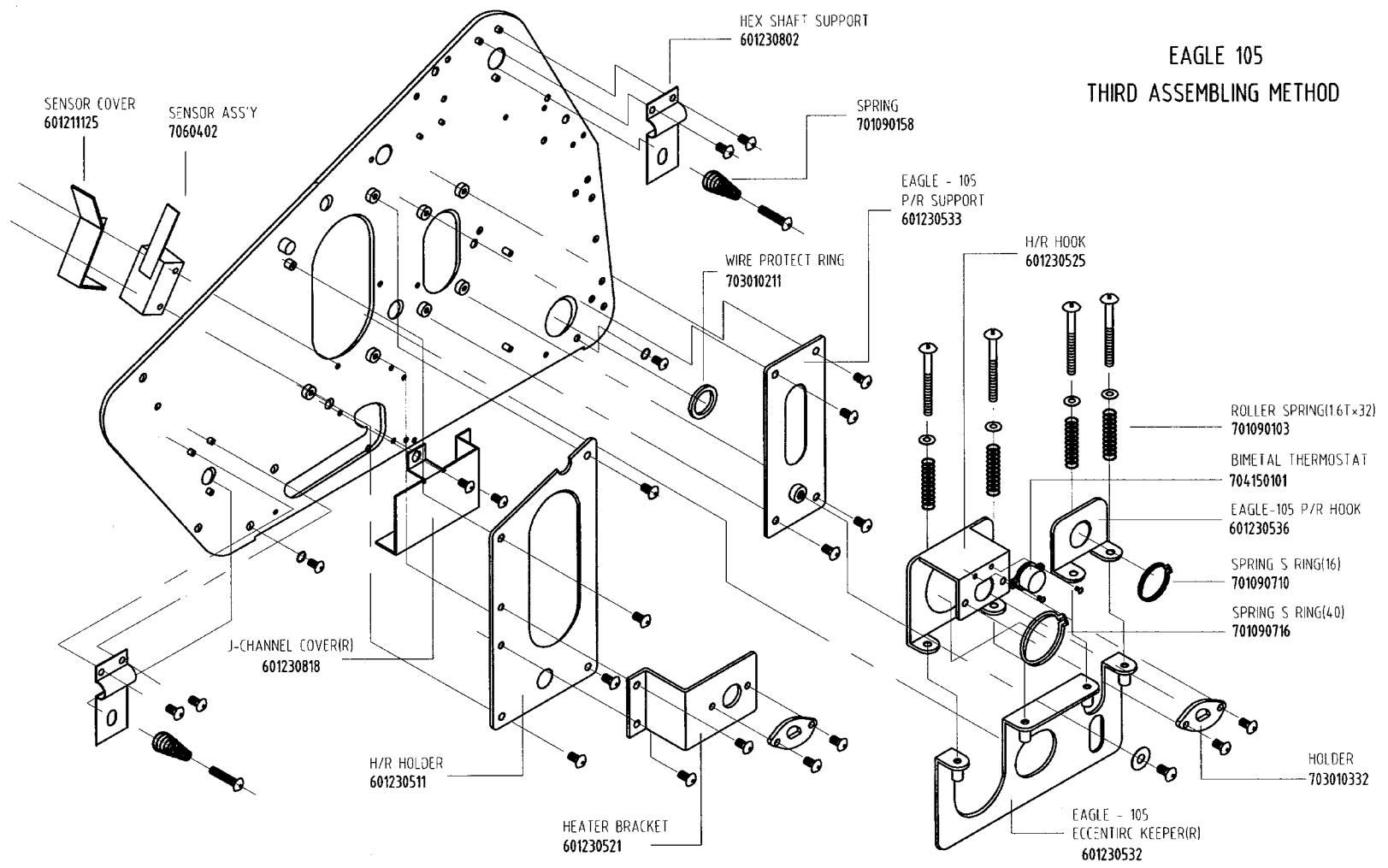


**EAGLE - 105
FIRST ASSEMBLING METHOD(105)**

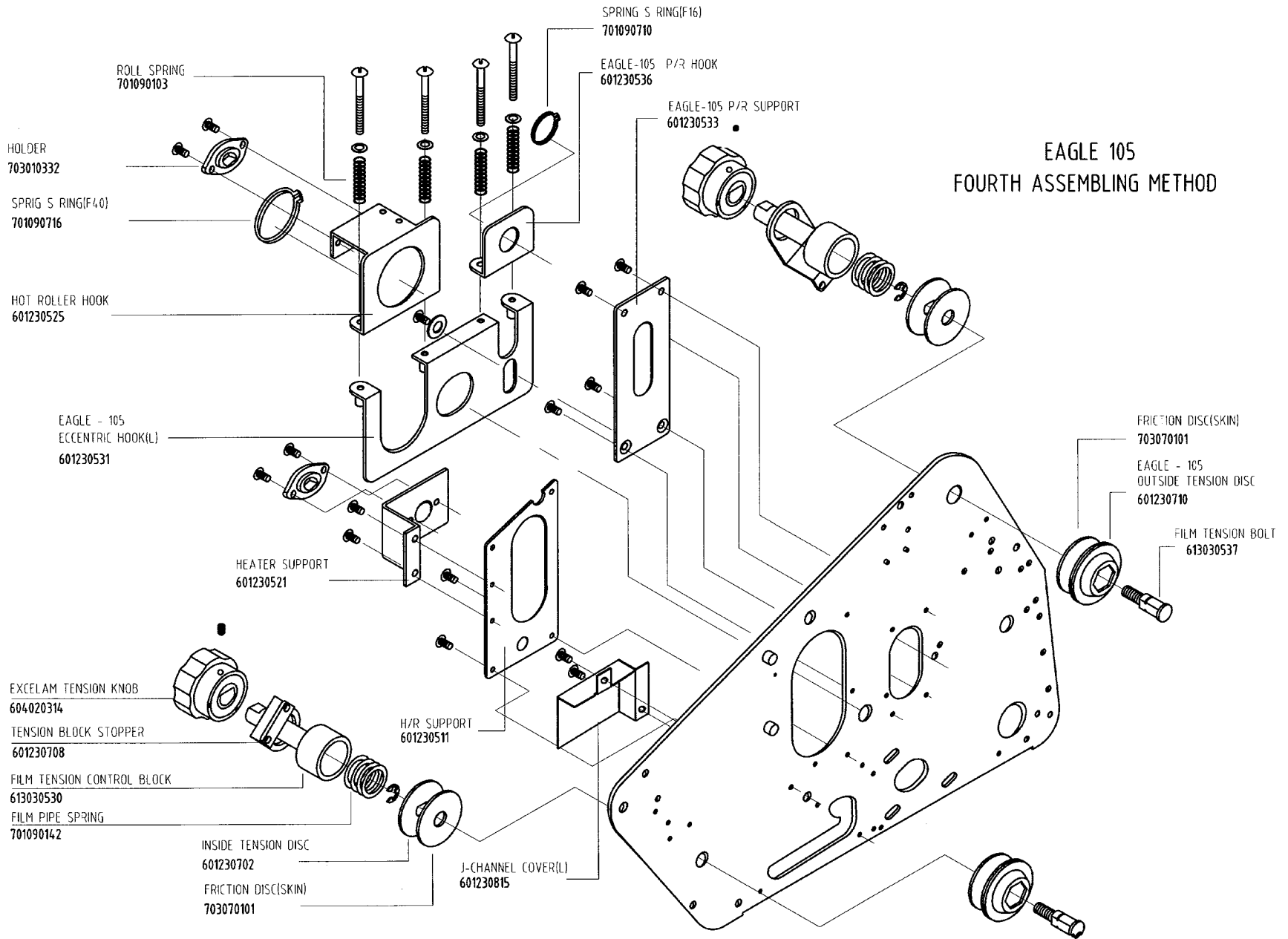
EAGLE - 105
SIDE PLATE(R)
601230214



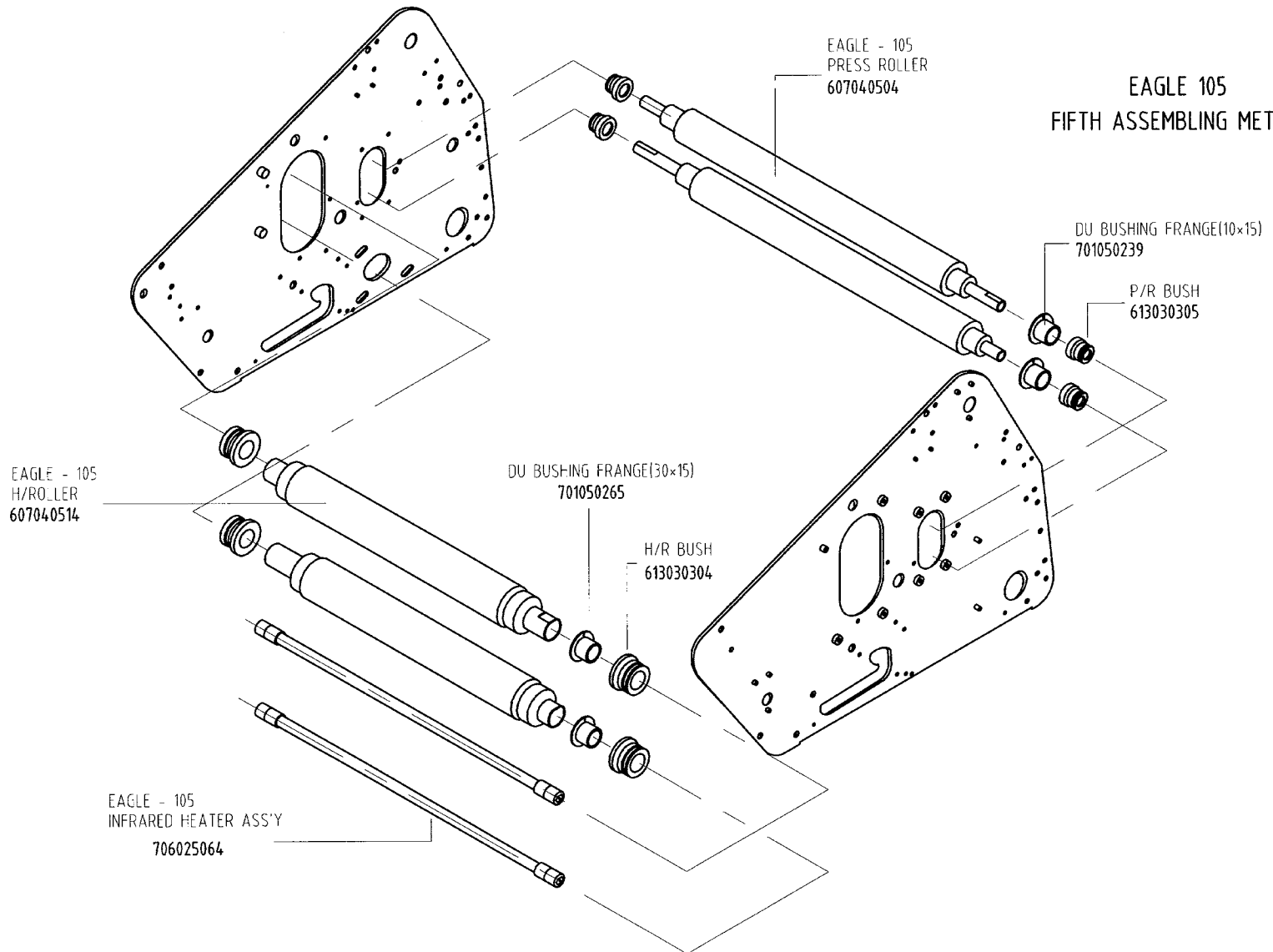
EAGLE 105 THIRD ASSEMBLING METHOD

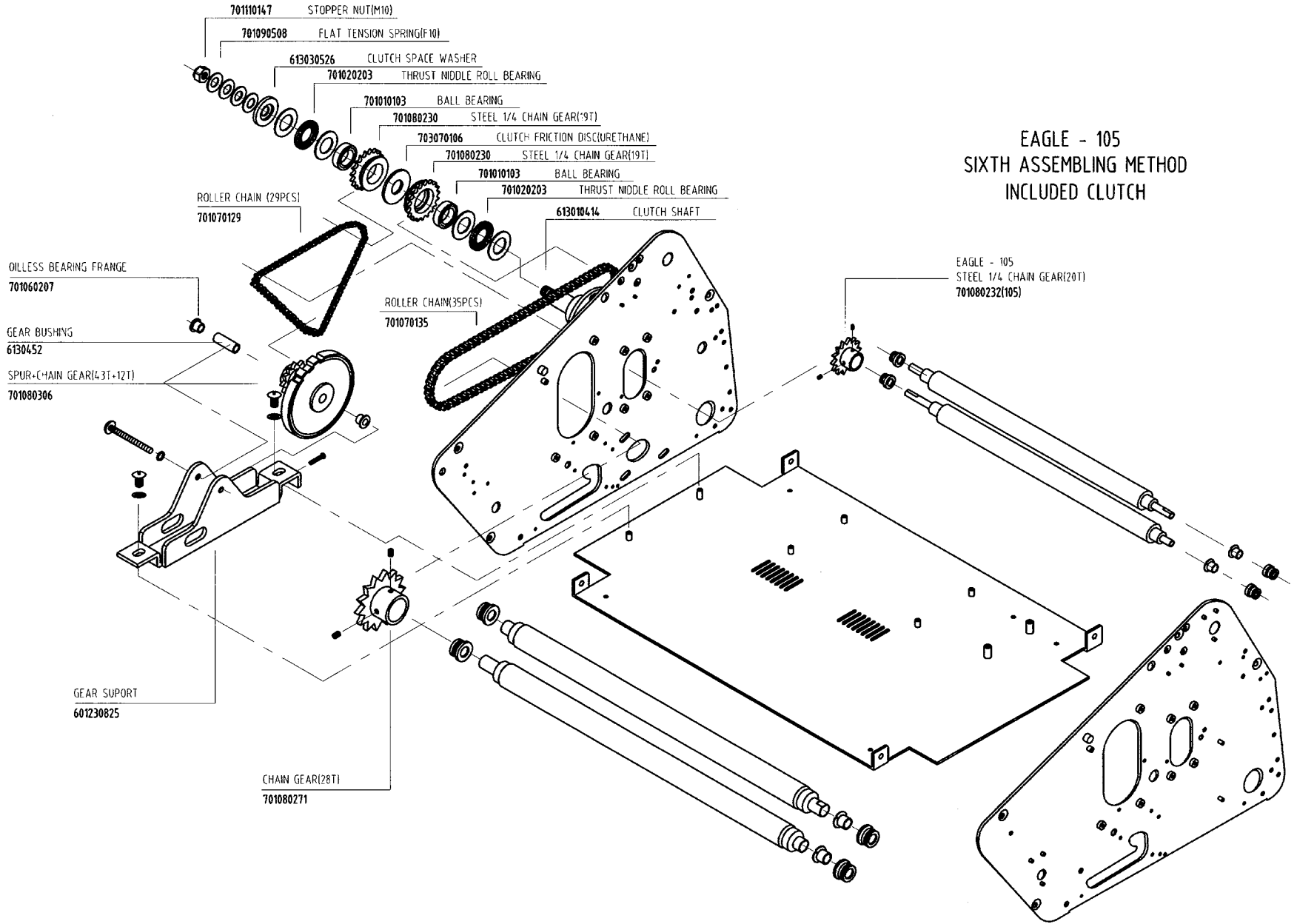


EAGLE 105 FOURTH ASSEMBLING METHOD



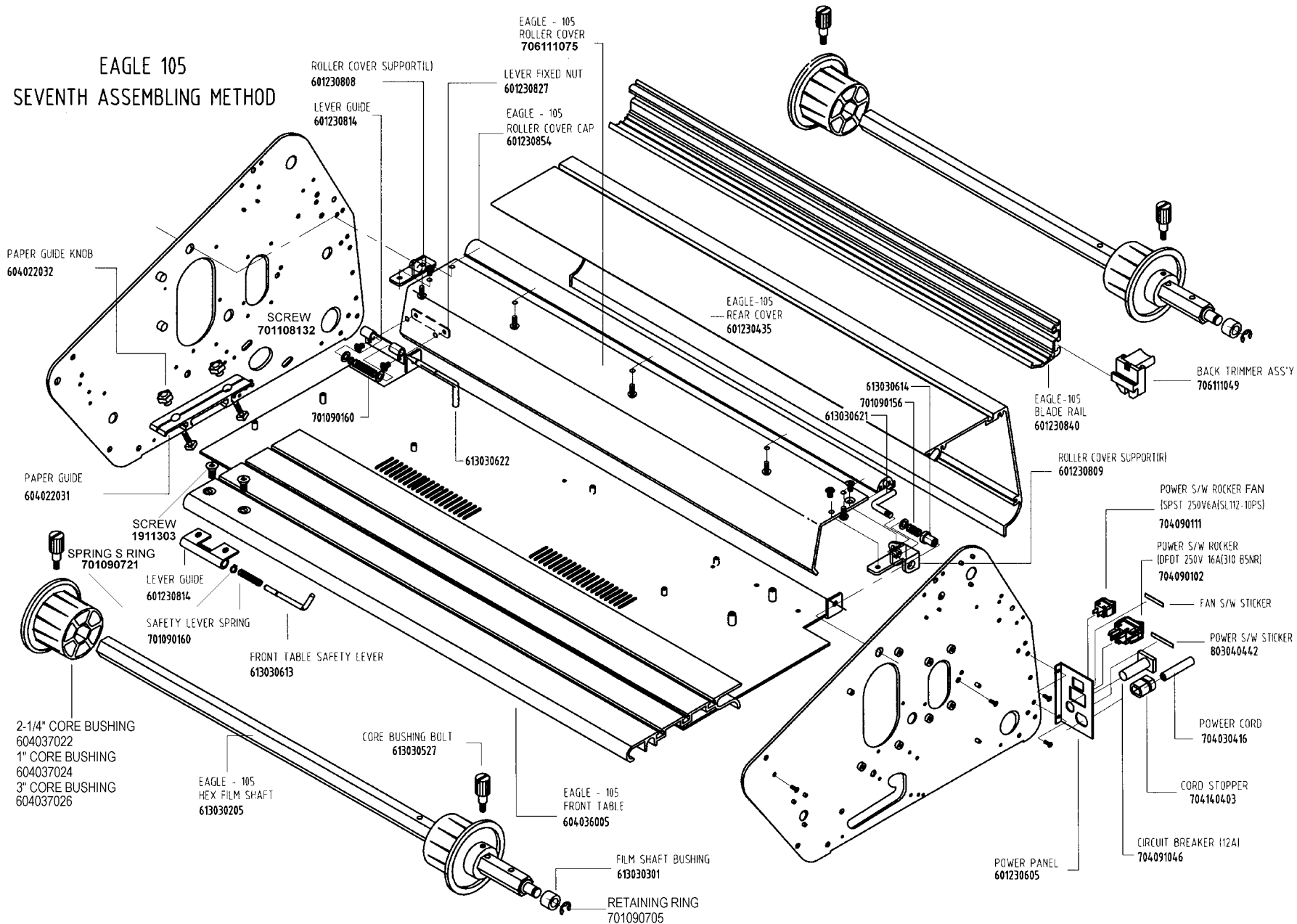
EAGLE 105 FIFTH ASSEMBLING METHOD





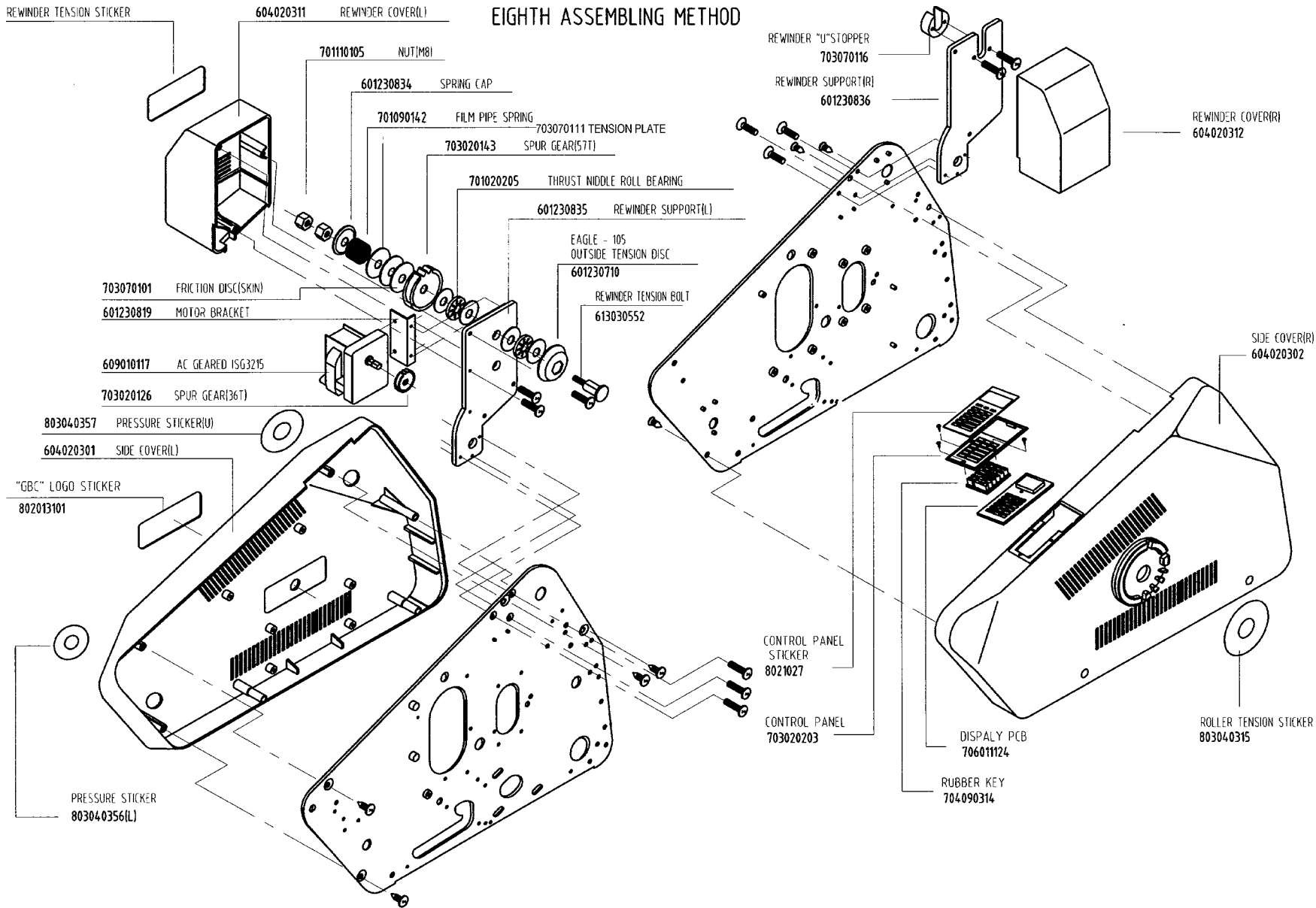
EAGLE - 105
SIXTH ASSEMBLING METHOD
INCLUDED CLUTCH

EAGLE 105 SEVENTH ASSEMBLING METHOD



EAGLE - 105

EIGHTH ASSEMBLING METHOD



STAND ASSEMBLY 706111023

STAND SUPPORT

601230831

NUT

701110105

HEX BOLT

701107502

HEX BOLT

701107515

HEX BOLT

701107515

STAND CONNECTOR

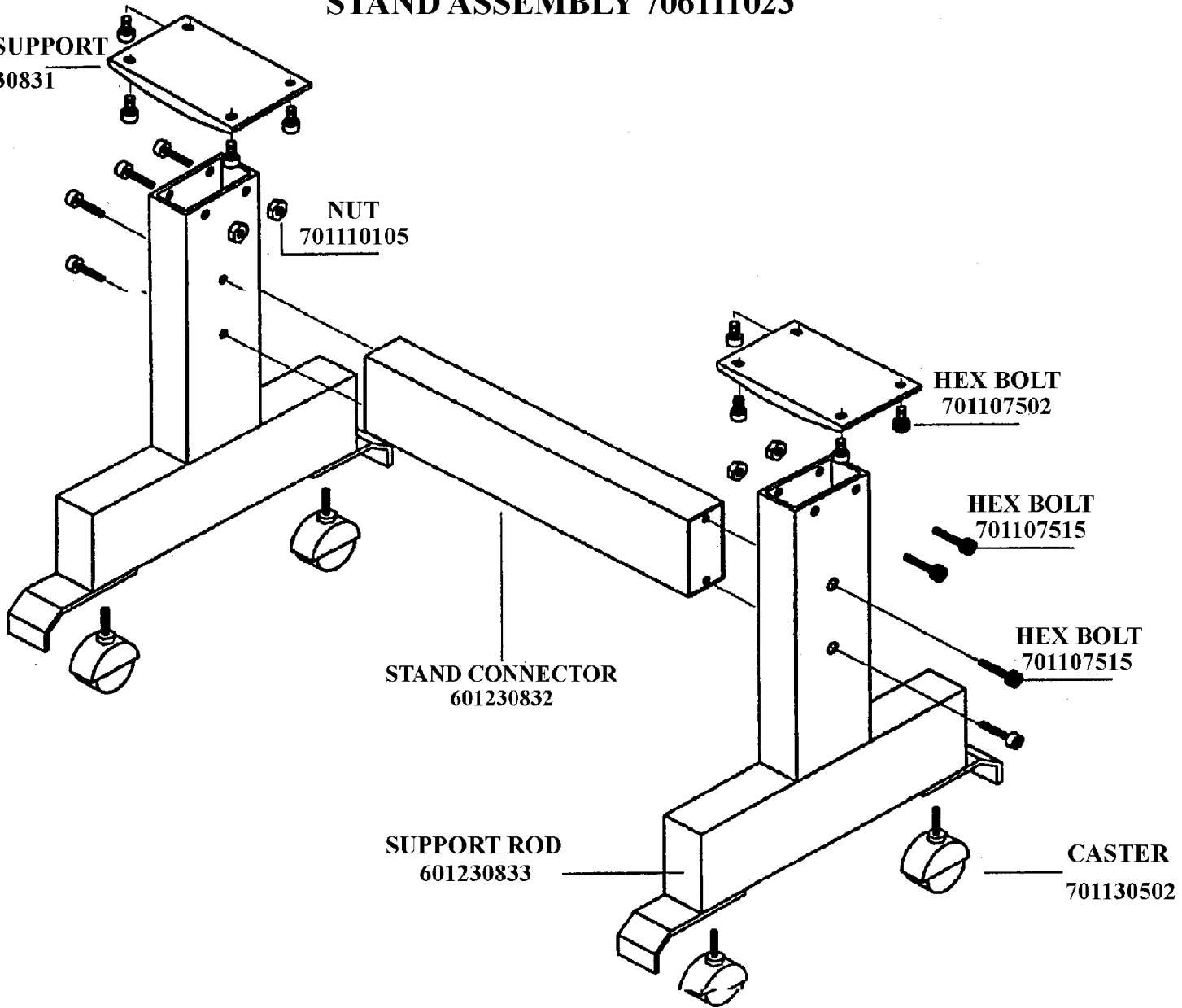
601230832

SUPPORT ROD

601230833

CASTER

701130502



9.0 RECOMMENDED SPARE PARTS/TOOL LIST

9.1 Recommended Spare Parts List

This list is only a recommendation of commonly used parts. This is not a requirement or a min/max list for technicians inventory.

PART NO.	DESCRIPTION	QTY
704091048	E-35/65 CIRCUIT BREAKER 15A (120V)	1
704091046	E-105 CIRCUIT BREAKER 12AMP (230V)	1
706011124	DISPLAY PCB (CONTROL PANEL PCB)	1
704090314	RUBBER KEY CONTROL PANEL MEMBRANE	1
701090142	FILM TENSION PIPE SPRING	2
703070101	RUBBING SKIN (BRAKE PAD)	4
7060402	HEAT SENSOR ASSEMBLY	1
706025061	E-35 INFRARED HEATER ASS' Y	2
706025063	E-65 INFRARED HEATER ASS' Y (3-5/8" LONG)	2
706025064	E-105 INFRARED HEATER ASS' Y	2
1154019	FILM CUTTING BLADE (GMP# 603050221)	1
1711515	CLEANING KIT	1
706011122	E-35/65 MAIN PCB ASS' Y(115VAC)	1
706011123	E-35/65/105 MAIN PCB ASS' Y(230VAC)	1
610010206	TRANSFORMER E-35/65 (115VAC)	1
610010207	TRANSFORMER E-35/65/105 (230VAC)	1
613030527	E-35/65/105 CORE BUSHING BOLT	4