



FALCON 60 CE Series II Parts List

GBC IS AN ACCO BRANDS COMPANY



***Falcon 60 CE Series II
Illustrated Parts Booklet
(000 - 068)***

© GBC Films Group, December 2000
Do not duplicate without written permission

Booklet #: F60CESeriesIIPB001

**GBC Films Group
4151 Anderson Road
DeForest, WI 53532
Ph: (608) 246 - 8844
Fx: (608) 246 - 8645**

Links to Content

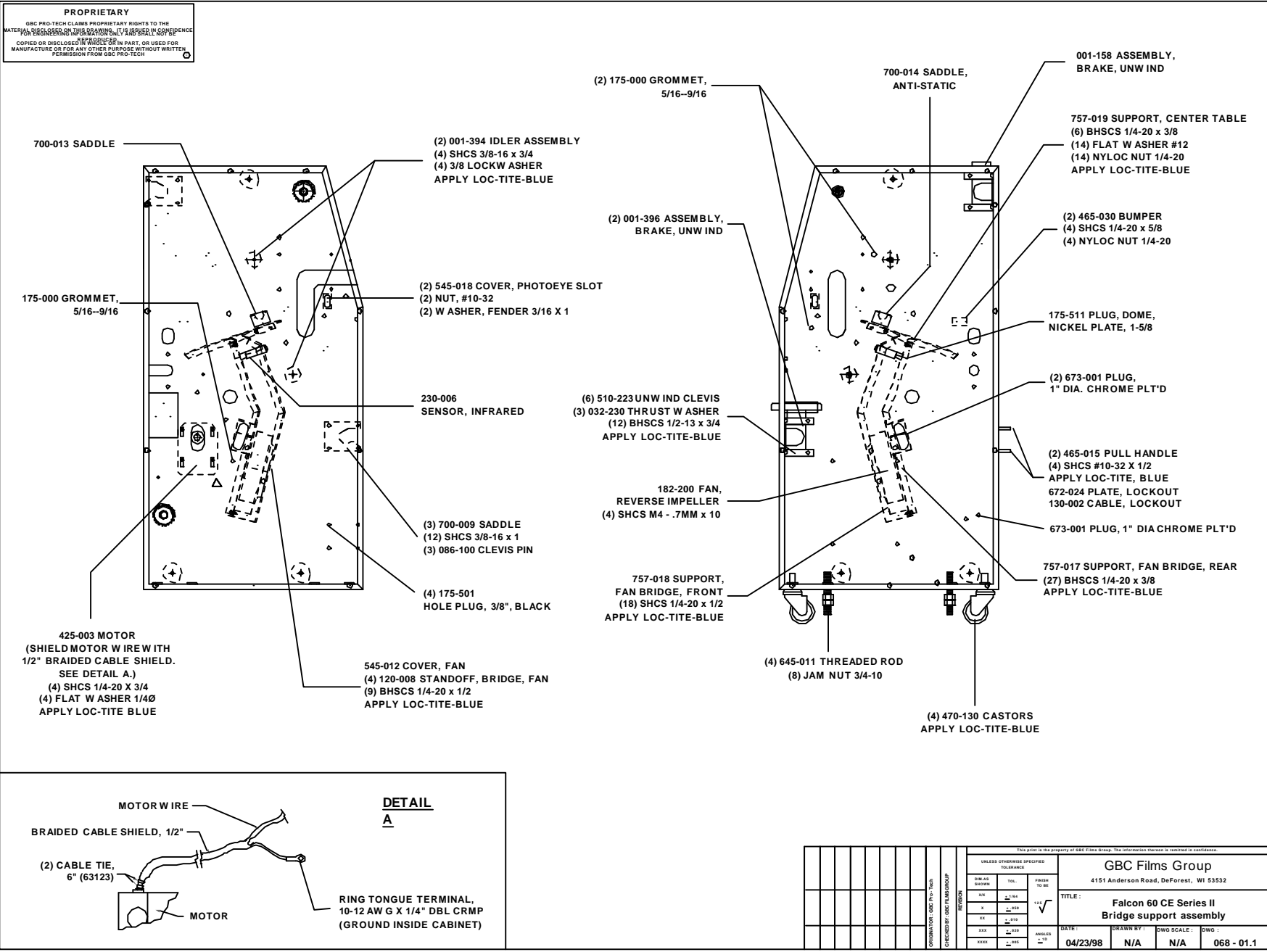
Drawing number :	Drawing Title:	Page number:
068 - 01.1	Bridge support assembly	1 - 1
068 - 01.2	Front and rear views	1 - 2
068 - 02.0	Chain and drive assembly	1 - 3
068 - 03.0	Main roller lift assembly	1 - 4
068 - 04.1	Pull roll cover assembly	1 - 5
068 - 04.2	Pull roll lift assembly	1 - 6
068 - 05.1	Control side electrical	1 - 7
068 - 05.2	Drive side electrical	1 - 8
068 - 05.3	Safety stops	1 - 9
068 - 06.1	Electrical panel assembly	1 - 10
068 - 06.2	Detail assemblies	1 - 11
068 - 07.0	Final assembly	1 - 12

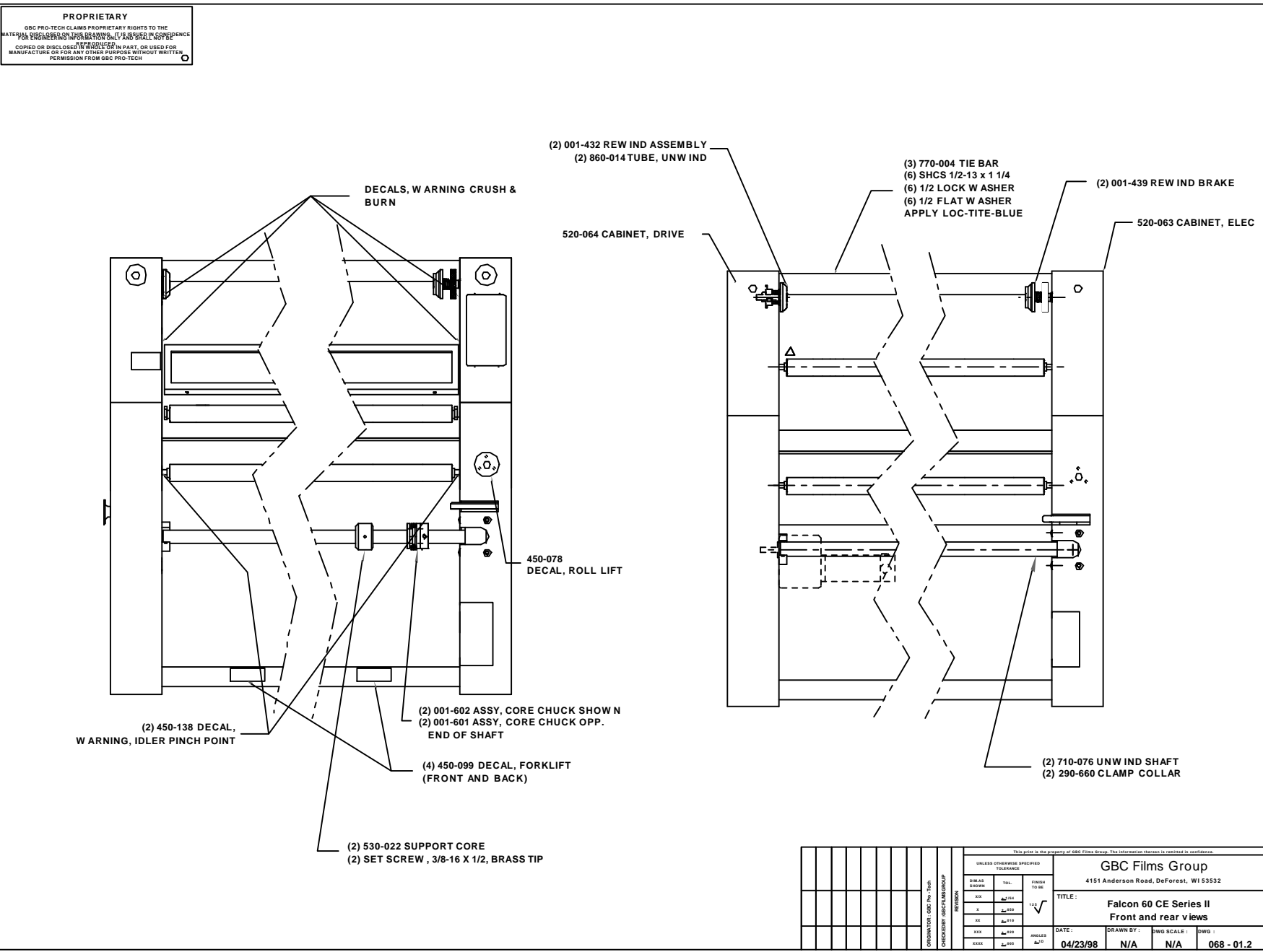
Drawing number :

Drawing Title:

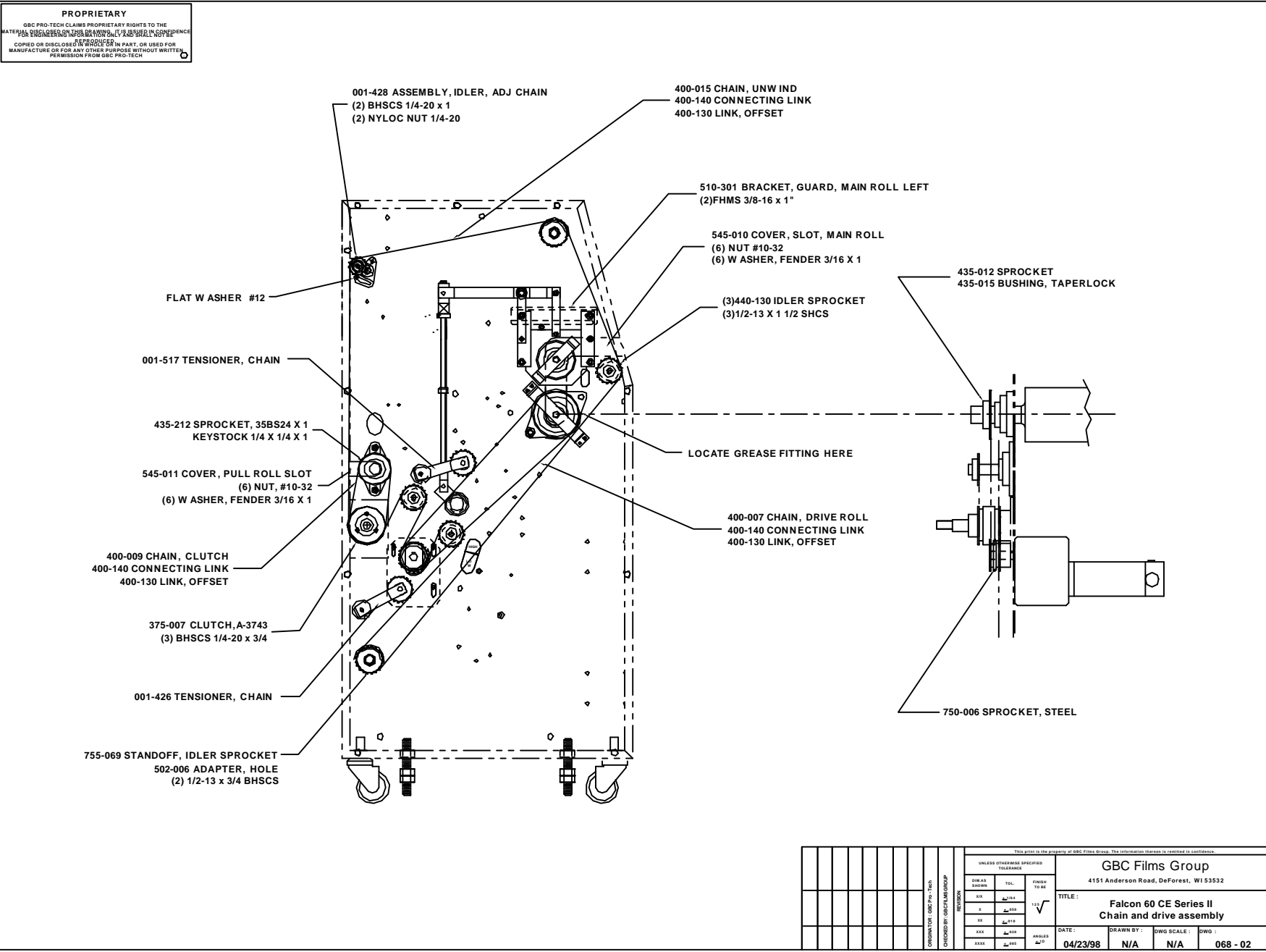
Page number:

This page intentionally left blank.

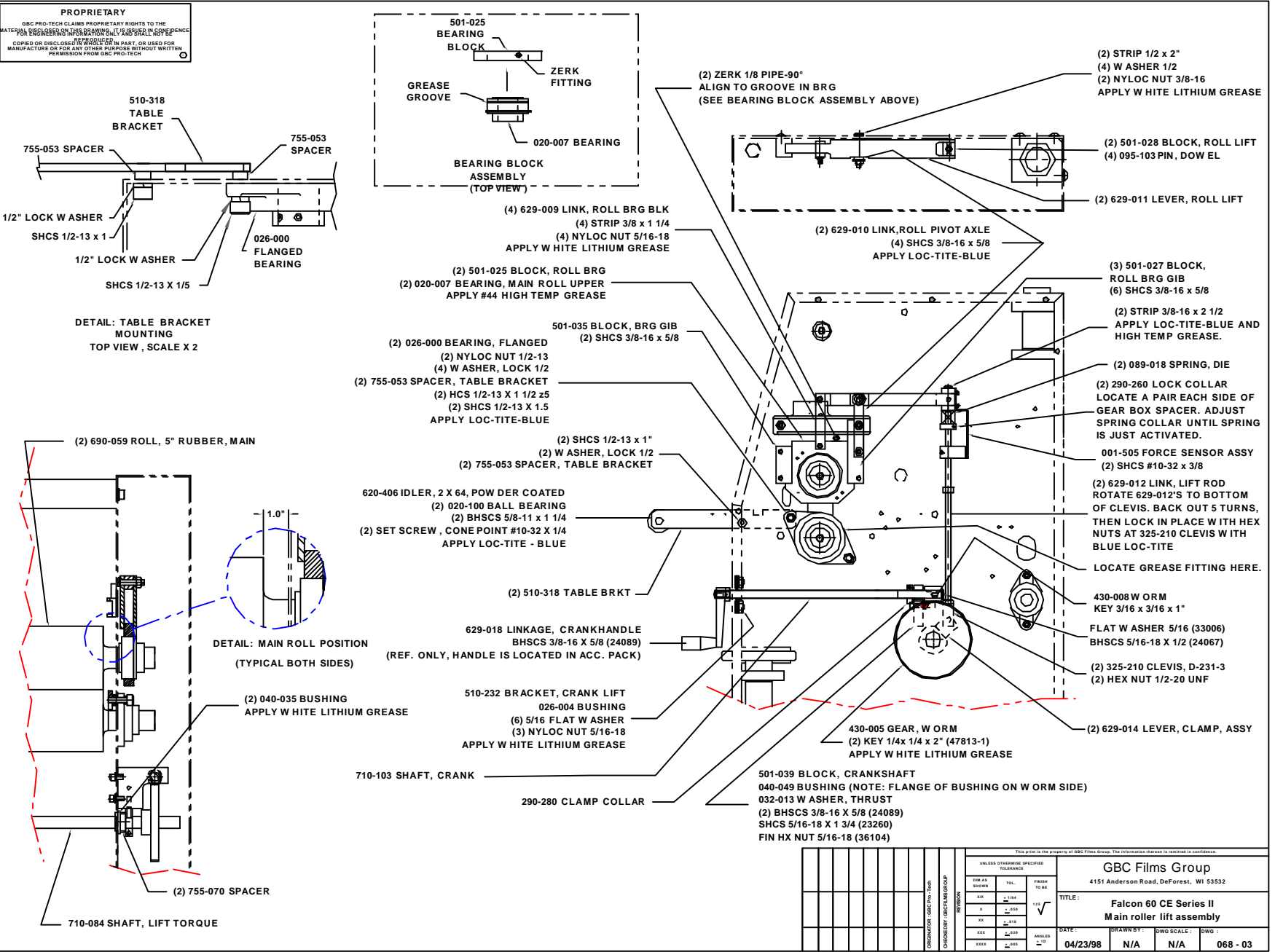




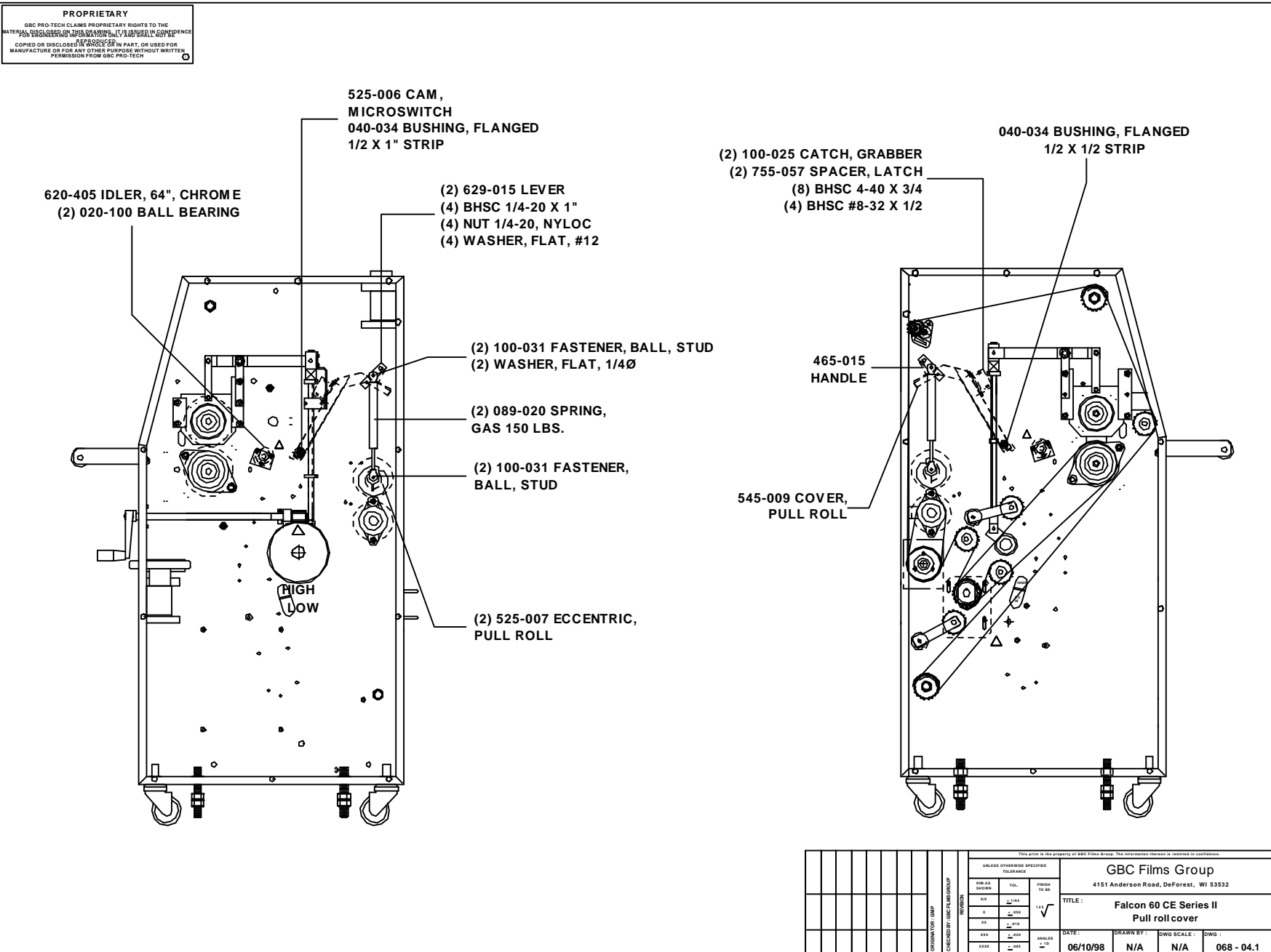
UNLESS OTHERWISE SPECIFIED TOLERANCE				GBC Films Group 4151 Anderson Road, DeForest, WI 53532			
SURF FINISH	TOL.	FINISH TO BE		TITLE: Falcon 60 CE Series II Front and rear views			
XXX	±.001	11.5		DATE: 04/23/98	DRAWN BY: N/A	DWG SCALE: N/A	DWG NO: 068 - 01.2
X	±.002						
XX	±.005						
XXX	±.010	ANGLES					
XXXX	±.015	±.01					
REVISION							
DESCRIPTION / DIMENSIONS							
DATE: 04/23/98							

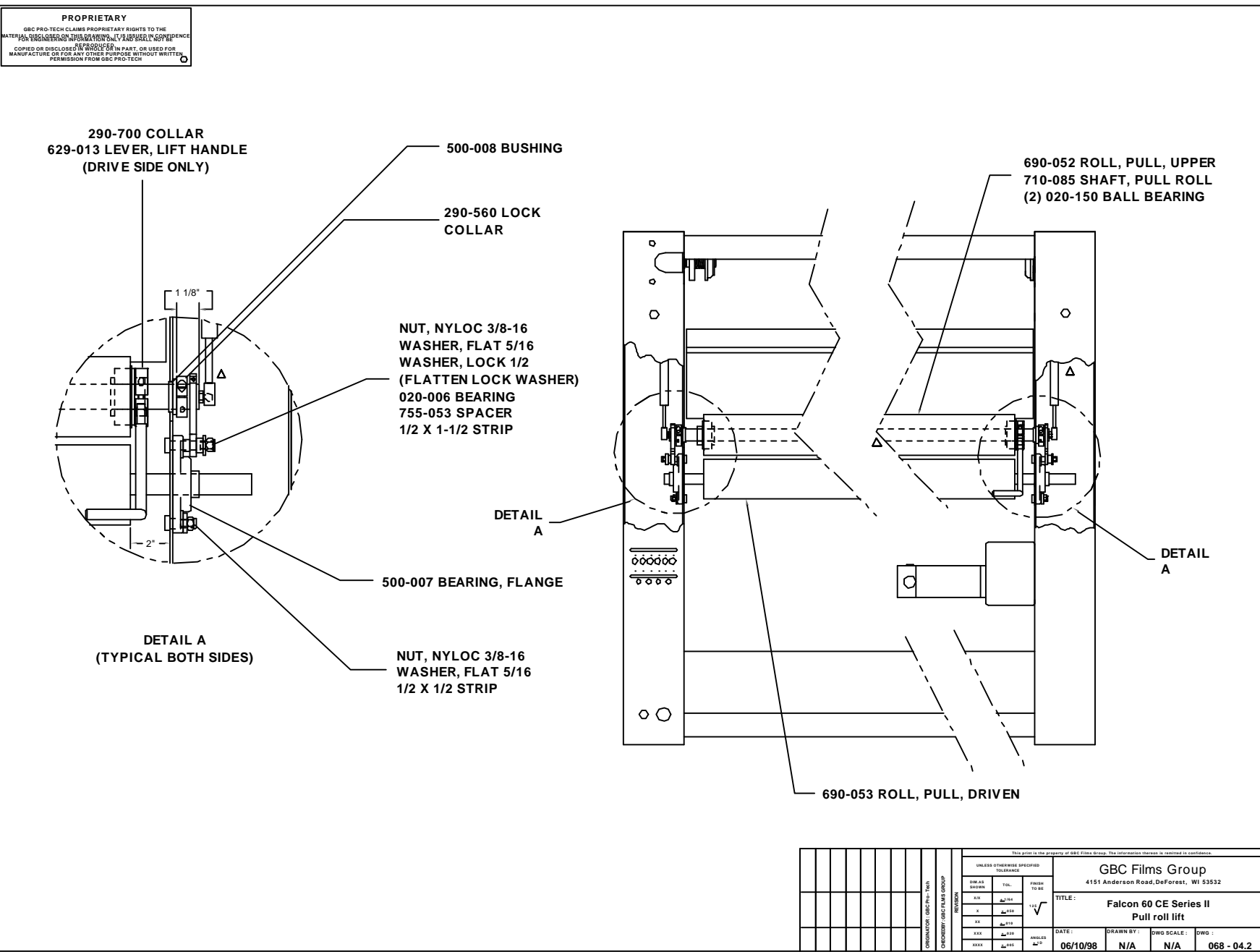


UNLESS OTHERWISE SPECIFIED TOLERANCE				GBC Films Group 4151 Anderson Road, DeForest, WI 53532			
DIR. AS SHOWN	TOL.	FRACTION	TO DEC.	TITLE: Falcon 60 CE Series II Chain and drive assembly			
XX	$\pm .01$			DATE:	DRAWN BY:	DWG SCALE:	DWG:
X	$\pm .02$			04/23/98	N/A	N/A	068 - 02
XX	$\pm .03$						
XXX	$\pm .04$						
XXXX	$\pm .05$						



UNLESS OTHERWISE SPECIFIED TOLERANCE				GBC Films Group 4151 Anderson Road, DeForest, WI 53532			
SURF. FIN.	TOL.	FINISH	TO BE	TITLE: Falcon 60 CE Series II Main roller lift assembly			
XXX	±.104		114	DATE: 04/23/98			
X	±.010			DRAWN BY: N/A			
XX	±.010	HOLE		DWG SCALE: N/A			
XXX	±.010			DWG: 068 - 03			
XXXX	±.010						

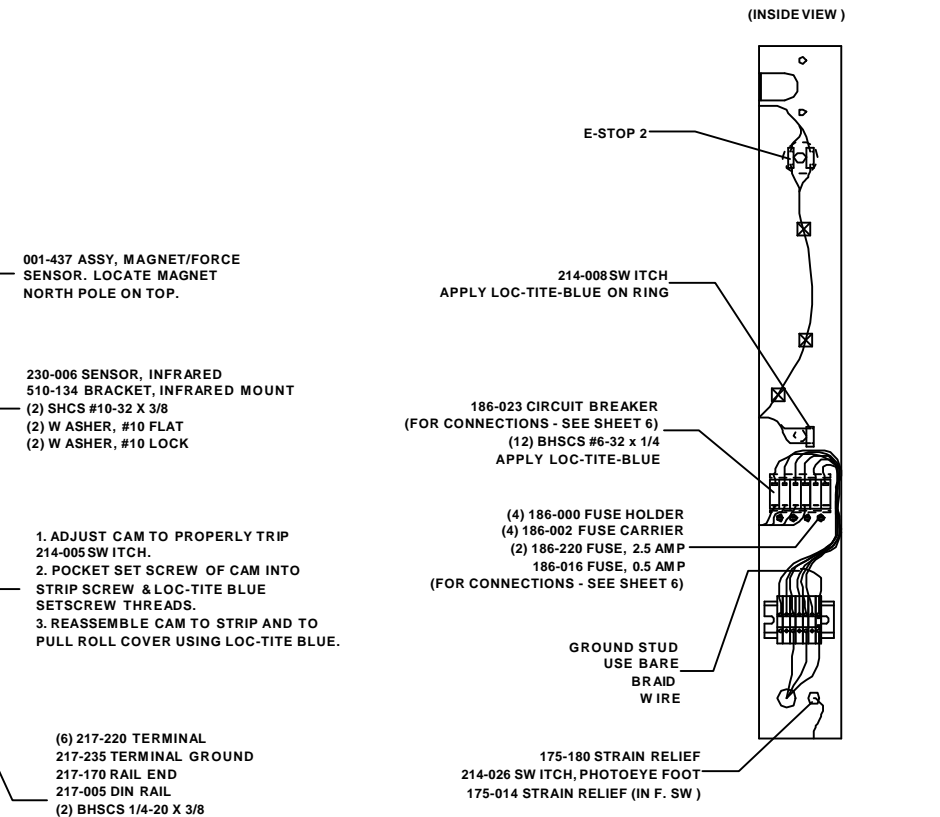
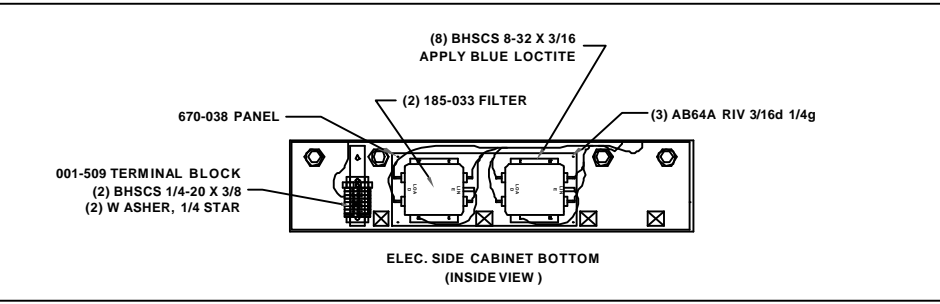
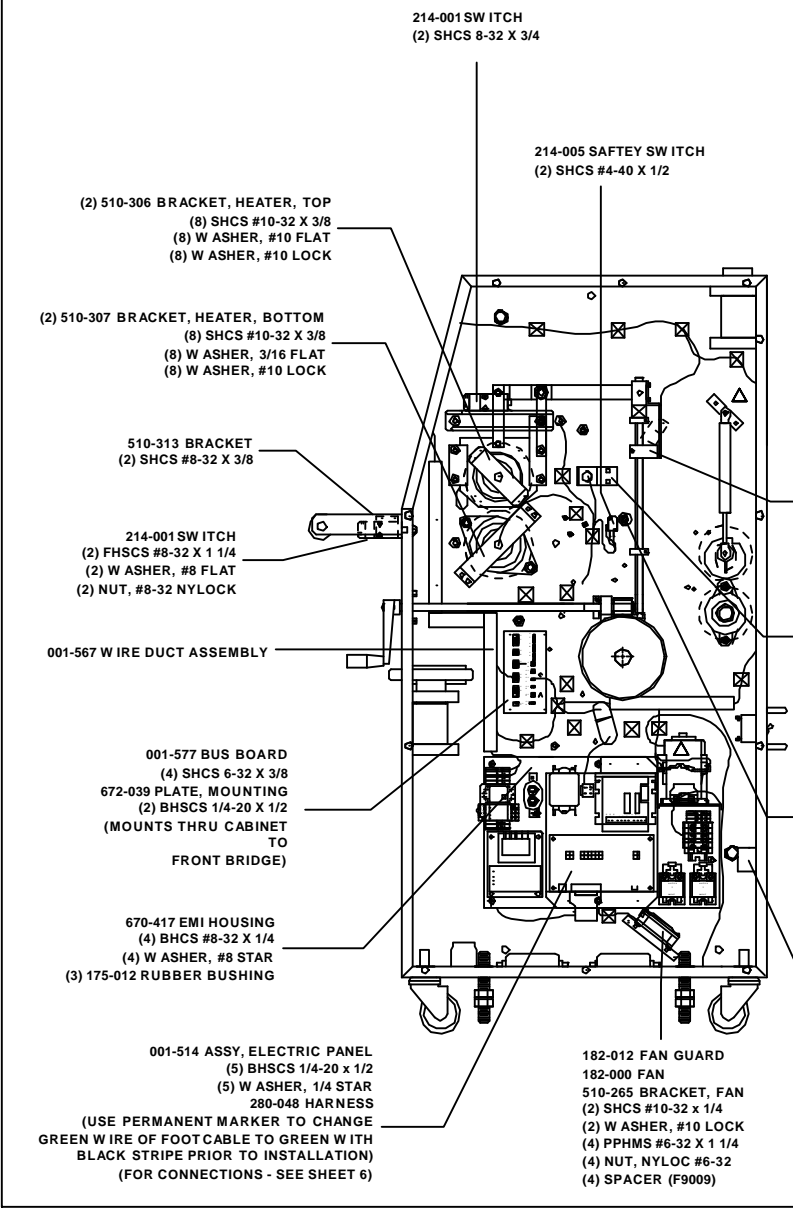




PROPRIETARY
 GBC PRO-TECH CLAIMS PROPRIETARY RIGHTS TO THE
 MATERIALS, DESIGN AND INFORMATION CONTAINED
 HEREIN. REPRODUCTION, COPIED OR DISCLOSED IN
 WHOLE OR IN PART, OR USED FOR
 MANUFACTURE OR FOR ANY OTHER PURPOSE WITHOUT WRITTEN
 PERMISSION FROM GBC PRO-TECH

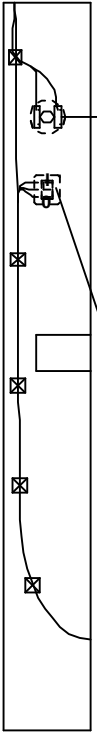
UNLESS OTHERWISE SPECIFIED				TOLERANCE			
DR. AS	TOL.	FINISH					
SHOWN	TO AS	TO AS					
XX	±.004	11.5					
X	±.010						
XX	±.010						
XXX	±.020						
XXXX	±.040						
DATE:			06/10/98	DRAWN BY:	N/A	DWG SCALE:	N/A
TITLE:			Falcon 60 CE Series II Pull roll lift				
DWG NO.:			068 - 04.2				

PROPRIETARY
 GBC PRO-TECH CLAIMS PROPRIETARY RIGHTS TO THE MATERIAL DISCLOSED HEREIN. IT IS HEREBY ADVISED FOR ENGINEERING INFORMATION ONLY AND SHALL NOT BE COPIED OR DISCLOSED IN ANY PART, OR USED FOR MANUFACTURE OR FOR ANY OTHER PURPOSE WITHOUT WRITTEN PERMISSION FROM GBC PRO-TECH



UNLESS OTHERWISE SPECIFIED TOLERANCE			GBC Films Group 4151 Anderson Road, DeForest, WI 53532	
DIR AS SHOWN	TOL.	FRACTION TO DEC	TITLE: Falcon 60 CE Series II Electrical - Control side	
XX	±.01	1/16	DATE:	DRAWN BY:
X	±.005		01/14/98	N/A
XX	±.010		DWG SCALE:	DWG:
XXX	±.005			068 - 05.1
XXXX	±.005			

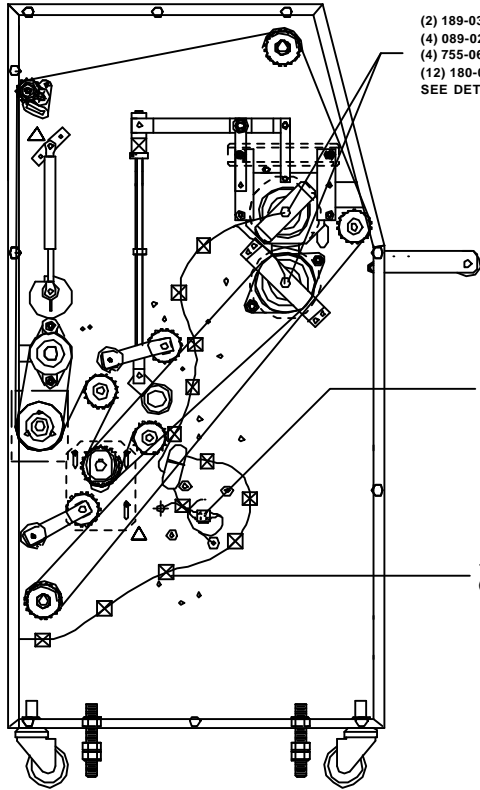
PROPRIETARY
 GBC PRO-TECH CLAIMS PROPRIETARY RIGHTS TO THE
 MATERIAL HEREIN. ANY REPRODUCTION, COPIING,
 OR DISCLOSURE OF THIS INFORMATION IN ANY MANNER
 WITHOUT THE WRITTEN PERMISSION OF GBC PRO-TECH
 IS STRICTLY PROHIBITED.
 GBC PRO-TECH
 COPIED OR DISCLOSED IN WHOLE OR IN PART, OR USED FOR
 MANUFACTURE OR FOR ANY OTHER PURPOSE WITHOUT WRITTEN
 PERMISSION FROM GBC PRO-TECH



(INSIDE VIEW)

E-STOP 3

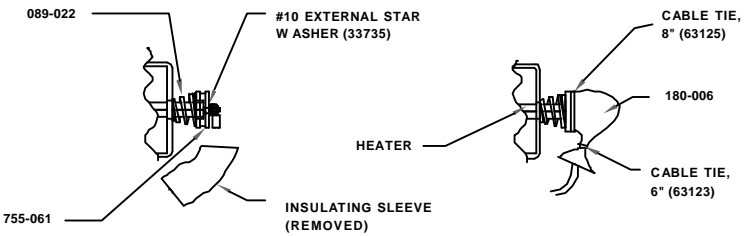
- 450-095 DECAL, RUN/STOP
- 214-290 SWITCH, RUN/STOP
- 214-295 SWITCH COVER, RED/GREEN (GREEN ON TOP)
- (2) 214-027 BARRIER, ROCKER SWITCH
(FOR CONNECTIONS - SEE SHEET 6)



- (2) 189-032 HEATER
- (4) 089-022 SPRING, HEATER TENSION
- (4) 755-061 SPACER, HEATER SPRING
- (12) 180-006 SLEEVE, INSULATING (4 PIECES, 3" LONG)
- SEE DETAIL A FOR INSTALLATION INSTRUCTIONS.

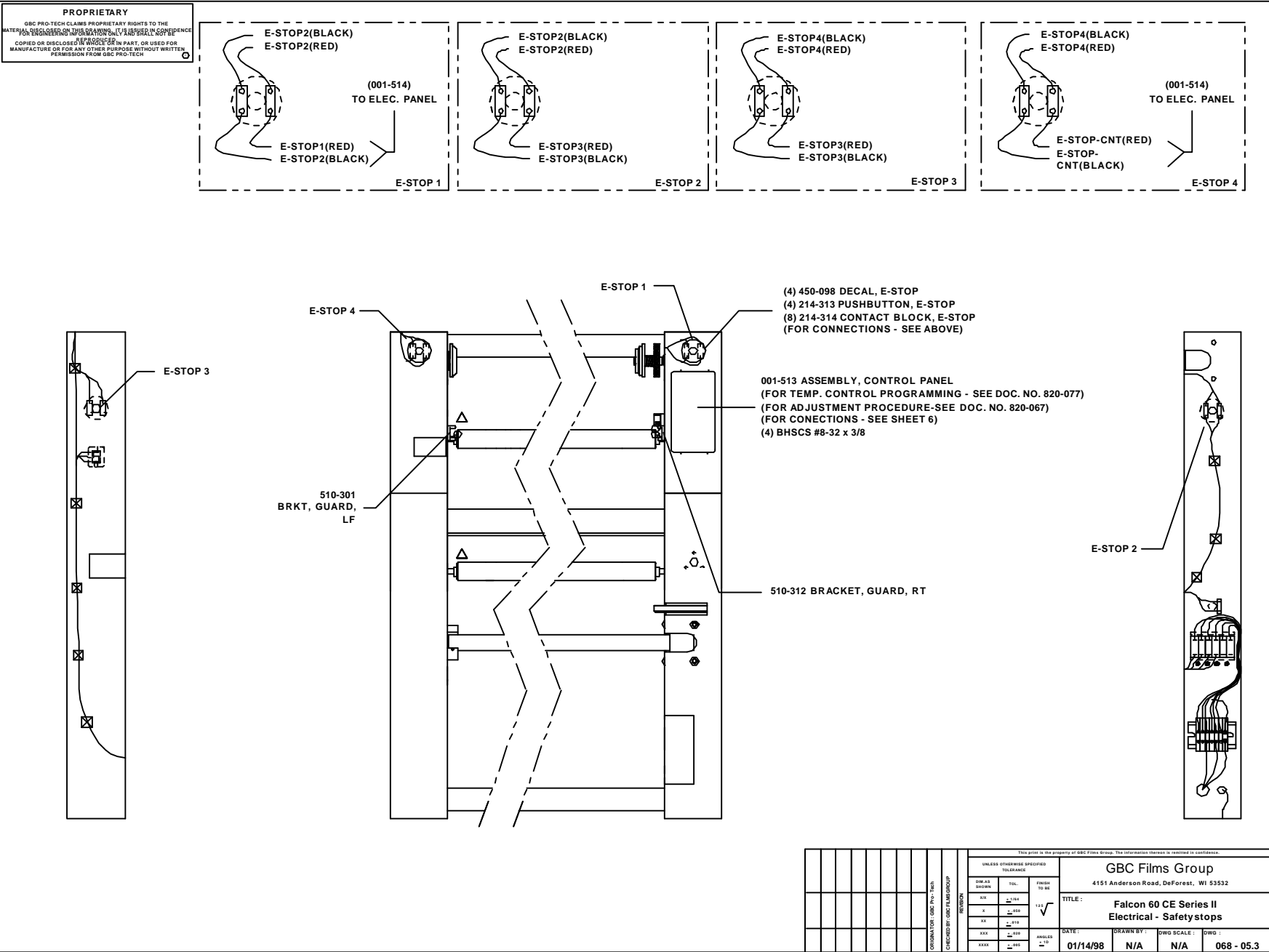
217-043 TERMINAL BLOCK
 (1) BHSCS #6-32 X 3/8

175-004 CABLE TIE BASE
 (APPROX. 50 TOTAL)

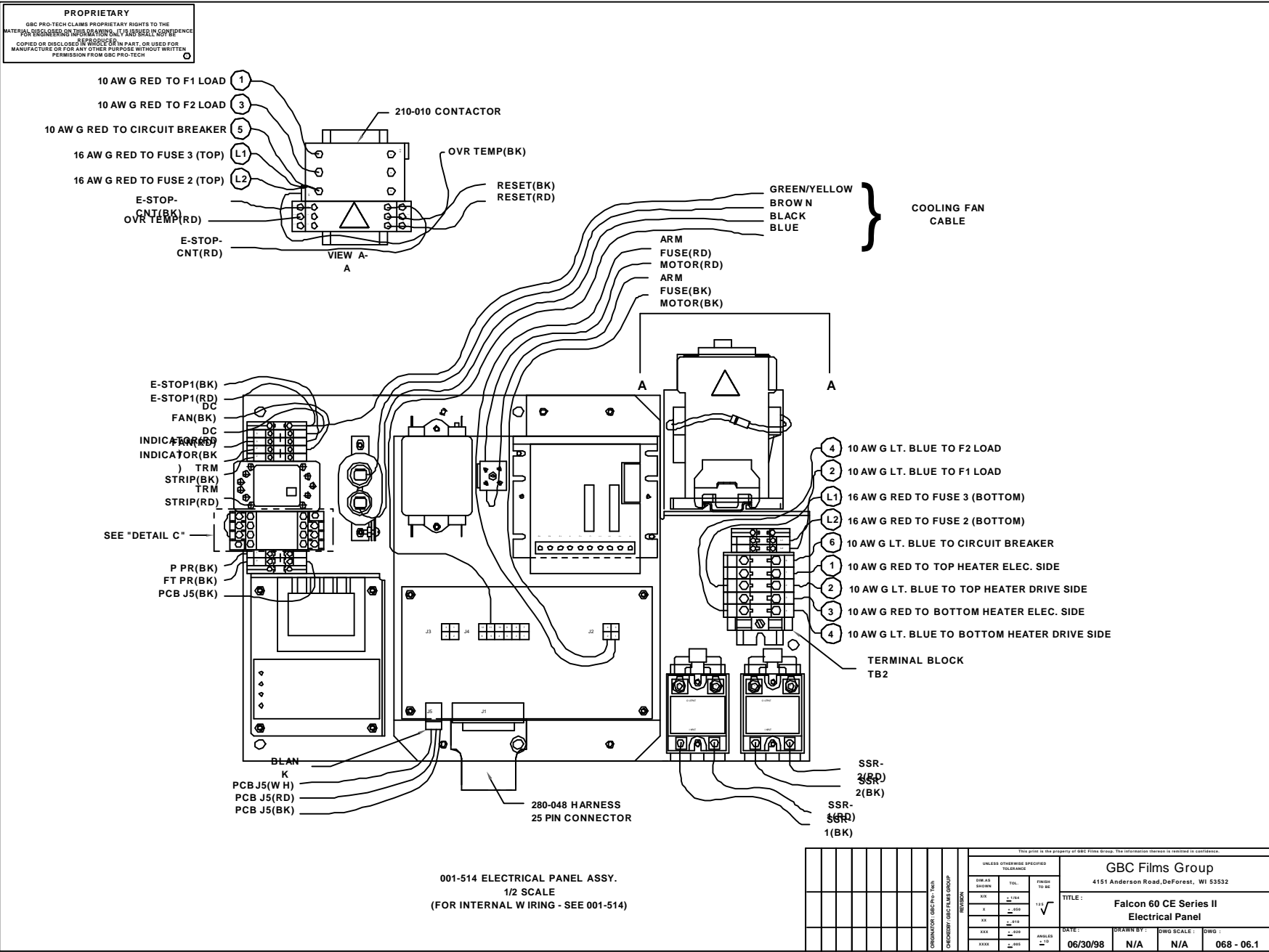


DETAIL A

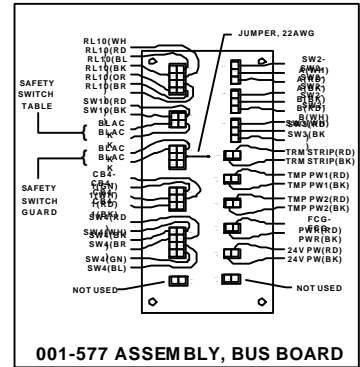
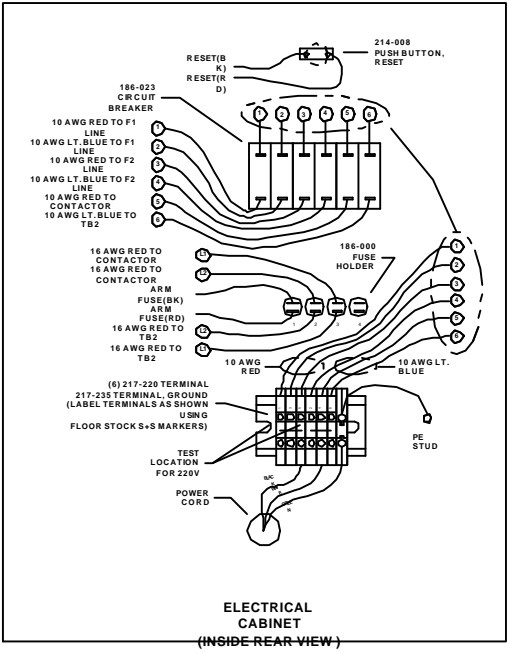
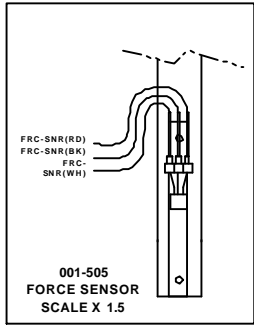
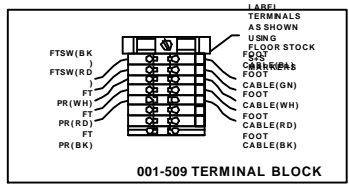
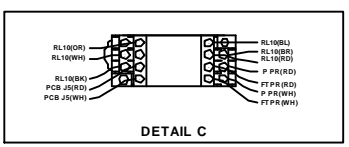
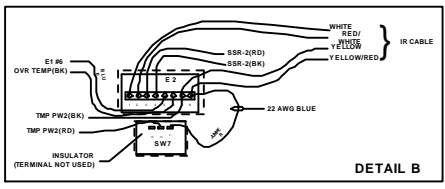
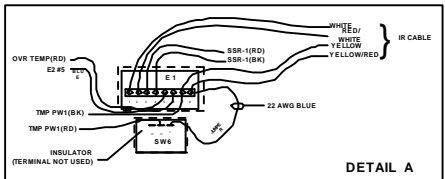
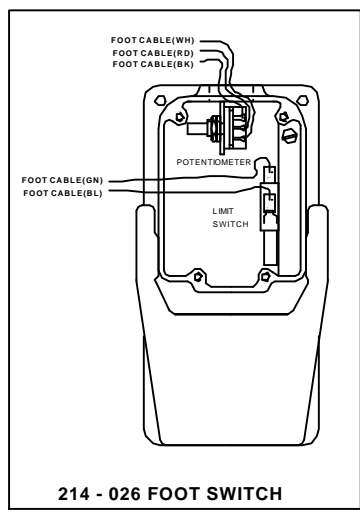
UNLESS OTHERWISE SPECIFIED				TOLERANCE		FINISH		TITLE	
SIZE AS SHOWN	TOL.	FINISH	TO BE	GBC Films Group 4151 Anderson Road, DeForest, WI 53532					
Ø	±.004		114	TITLE: Falcon 60 CE Series II Electrical - Drive side					
X	±.005			DATE: 01/14/98 DRAWN BY: N/A DWG SCALE: N/A DWG: 068 - 5.2					
XX	±.010								
XXX	±.020								
XXXX	±.040								



PROPRIETARY
 GBC PRO-TECH CLAIMS PROPRIETARY RIGHTS TO THE MATERIALS ENGINEERING INFORMATION, TV AND SHALL NOT BE COPIED OR DISCLOSED IN ANY MANNER, IN WHOLE OR IN PART, OR USED FOR MANUFACTURE OR FOR ANY OTHER PURPOSE WITHOUT WRITTEN PERMISSION FROM GBC PRO-TECH



PROPRIETARY
 GBC PRO-TECH CLAIMS PROPRIETARY RIGHTS TO THE MATERIALS DESCRIBED ON THIS DOCUMENT. IT IS HEREBY REQUESTED THAT ENGINEERS AND DESIGNERS NOT REPRODUCE OR DISCLOSE THIS INFORMATION IN ANY MANNER WITHOUT THE WRITTEN PERMISSION OF GBC PRO-TECH.



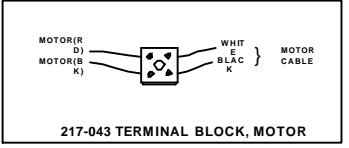
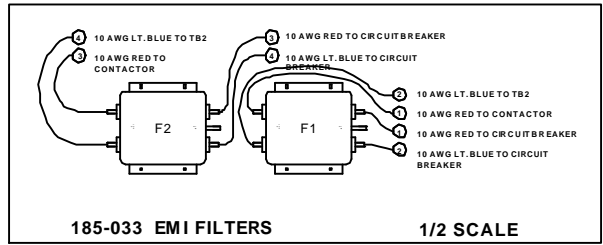
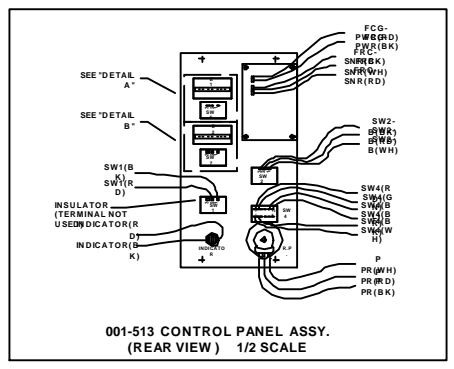
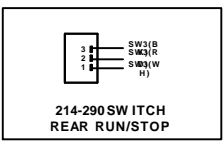
NOTES:

HARNESS/CABLE CONNECTIONS DESIGNATED BY CABLE NAME FOLLOWED BY A 2 LETTER COLOR CODE IN PARENTHESES:

RD=RED, WH=WHITE, BK=BLACK, BL=BLUE, BR=BROWN, GN=GREEN, OR=ORANGE.

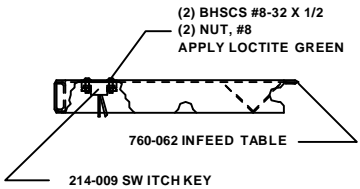
WIRE CONNECTIONS DESIGNATED BY WIRE GAUGE, COLOR, AND DESTINATION ALONG SIDE A BALLOON SHOWING THE WIRE LABEL.

WIRE RL10(GN) IS NOT USED.

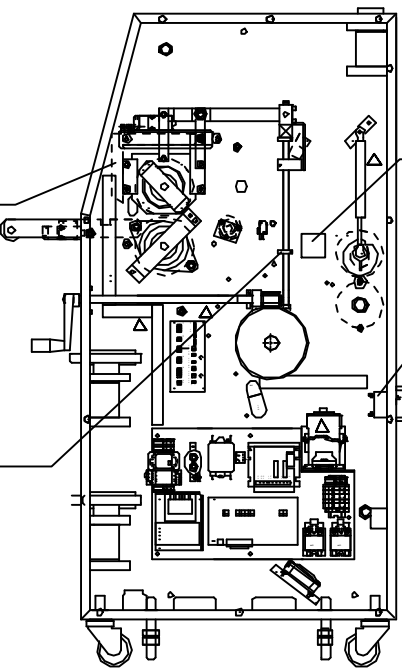


UNLESS OTHERWISE SPECIFIED TOLERANCE		GBC Films Group 4151 Anderson Road, DeForest, WI 53532	
DWG. AS SHOWN	TOL.	FRACTION TO BE	TITLE:
XX	±.004	1/16	Falcon 60 CE Series II Detail assemblies
X	±.010	1/32	DATE: 06/30/98
XX	±.010	1/32	DRAWN BY: N/A
XXX	±.010	1/32	DWG. SCALE: N/A
XXXX	±.010	1/32	DWG. NO: 068 - 06.2

PROPRIETARY
 GBC PRO-TECH CLAIMS PROPRIETARY RIGHTS TO THE MATERIAL SPECIFIED ON THIS DRAWING. NO PART OR REFERENCE FOR ENGINEERING INFORMATION IS TO BE REPRODUCED, COPIED OR DISCLOSED IN WHOLE OR IN PART OR USED FOR MANUFACTURE OR FOR ANY OTHER PURPOSE WITHOUT WRITTEN PERMISSION FROM GBC PRO-TECH.



OPEN THE ROLLS TO A GAP OF 0.75", THREAD THIS LOCK COLLAR 290-260 INTO CONTACT WITH GEAR BOX SPACER BELOW IT, THEN LOCK CLAMP COLLAR INTO PLACE.
 CLOSE THE ROLLS UNTIL FORCE GAGE IS AT 100%, THREAD LOCK COLLAR 290-260 BELOW THE GEAR BOX SPACER UP INTO CONTACT WITH THE GEAR BOX SPACER, THEN LOCK CLAMP COLLAR INTO PLACE.



- 450-007 DECAL, W IRING DIAGRAM (INSIDE OF CABINET)
- 450-121 DECAL, DANGER, VOLTAGE (INSIDE OF CABINET)
- 450-118 DECAL, READ INSTRUCTIONS
- 450-062 DECAL, RESET
- 450-097 DECAL, MAIN POWER
- 450-101 DECAL FUSE
- 450-034 DECAL, PROTECTIVE EARTH (INSIDE OF CABINET)
- 450-035 DECAL WARNING, HIGH VOLTAGE (INSIDE OF CABINET)
- 450-115 SERIAL DECAL

001-524 ASSEMBLY, GUARD, MAIN ROLL

450-180 DECAL, LARGE W ARNING TRIANGLE

450-116 DECAL, W ARNING CRUSH & BURN (MACHINE DRIVE SIDE)
 450-117 DECAL, W ARNING CRUSH & BURN (MACHINE CONTROL SIDE)

450-116 DECAL, W ARNING CRUSH & BURN (MACHINE CONTROL SIDE)
 450-117 DECAL, W ARNING CRUSH & BURN (MACHINE DRIVE SIDE)

450-119 DECAL, W ARNING MOVING PARTS (INSIDE CABINET)

450-035 DECAL W ARNING, HIGH VOLTAGE

089-009 SPRING DISC
 465-032 KNOB, CLUTCH
 NUT, JAM NYLON 3/4-16
 673-002 PLUG, 1 3/4"

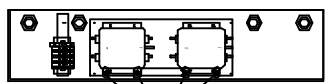
520-058 (520-052 OPPOSITE) CABINET, LEFT COVER
 (2) 450-072 DECAL, F-60 (LOCATION SHOW N ON "COVER ASSEMBLY")
 (2) 450-103 DECAL, SERIES II (LOCATION SHOW N ON "COVER ASSEMBLY")
 (20) BHSCS #10-32 x 3/8

450-180 DECAL, LARGE W ARNING TRIANGLE (BOTH SIDES)

(2) 450-138 DECAL, W ARNING, IDLER PINCH POINT

450-089 DECAL, GROUND SYMBOL (INSIDE CABINET)

CABINET BOTTOM (INSIDEVIEW)



450-089 GROUND SYMBOL

ACCESSORY KIT IS 001-511.

UNLESS OTHERWISE SPECIFIED TOLERANCE			GBC Films Group 4151 Anderson Road, DeForest, WI 53532		
SIZE AS SHOWN	TOL.	FINISH	TITLE: Falcon 60 CE Series II Final assembly		
XX	±.104	√	DATE:	DRAWN BY:	DWG SCALE:
X	±.050		06/30/98	N/A	N/A
XX	±.010				DWG: 068 - 07
XXX	±.004				
XXXX	±.002				