
Orca I SP Parts Publication

© April 1999 GBC Pro - Tech
Do not duplicate without written permission.



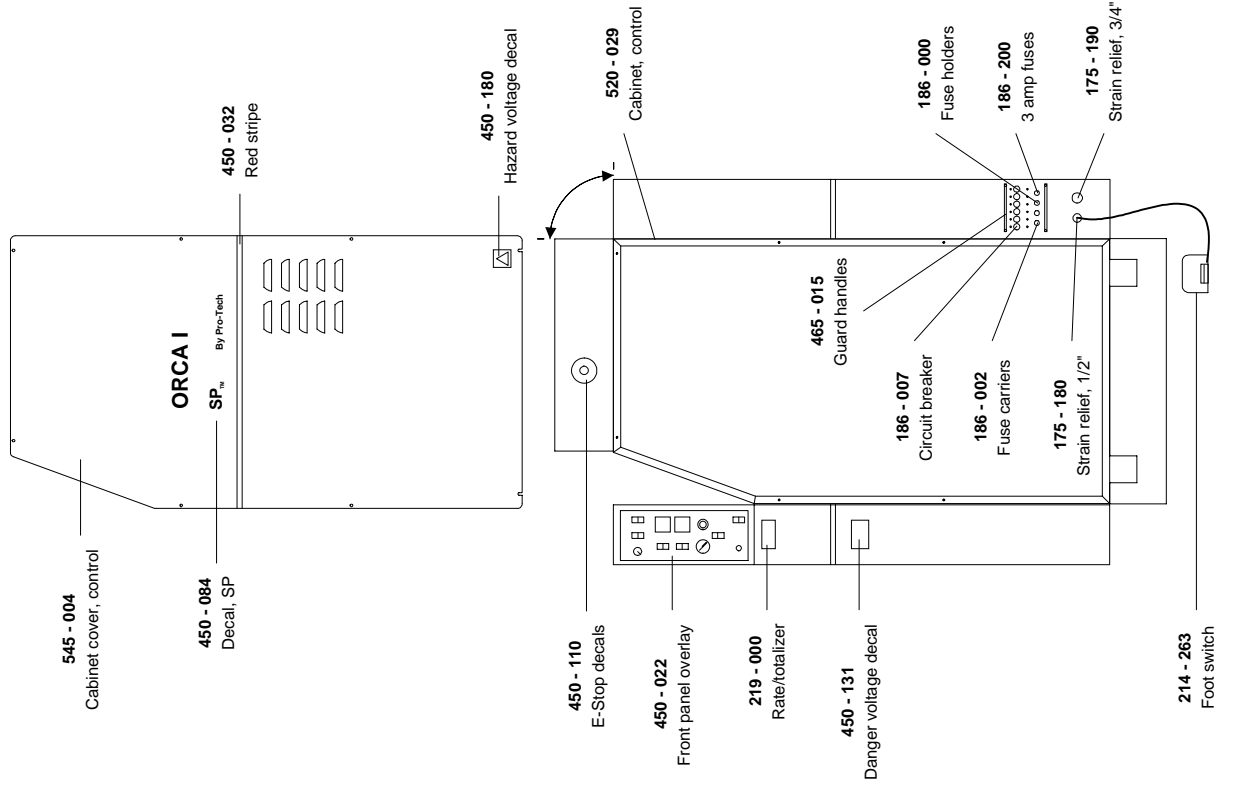
Revision: April 1999
Part number: N/A

GBC Pro - Tech
4151 Anderson Road
DeForest, WI 53532
Ph: (608) 246 - 8844
Fx: (608) 246 - 8645

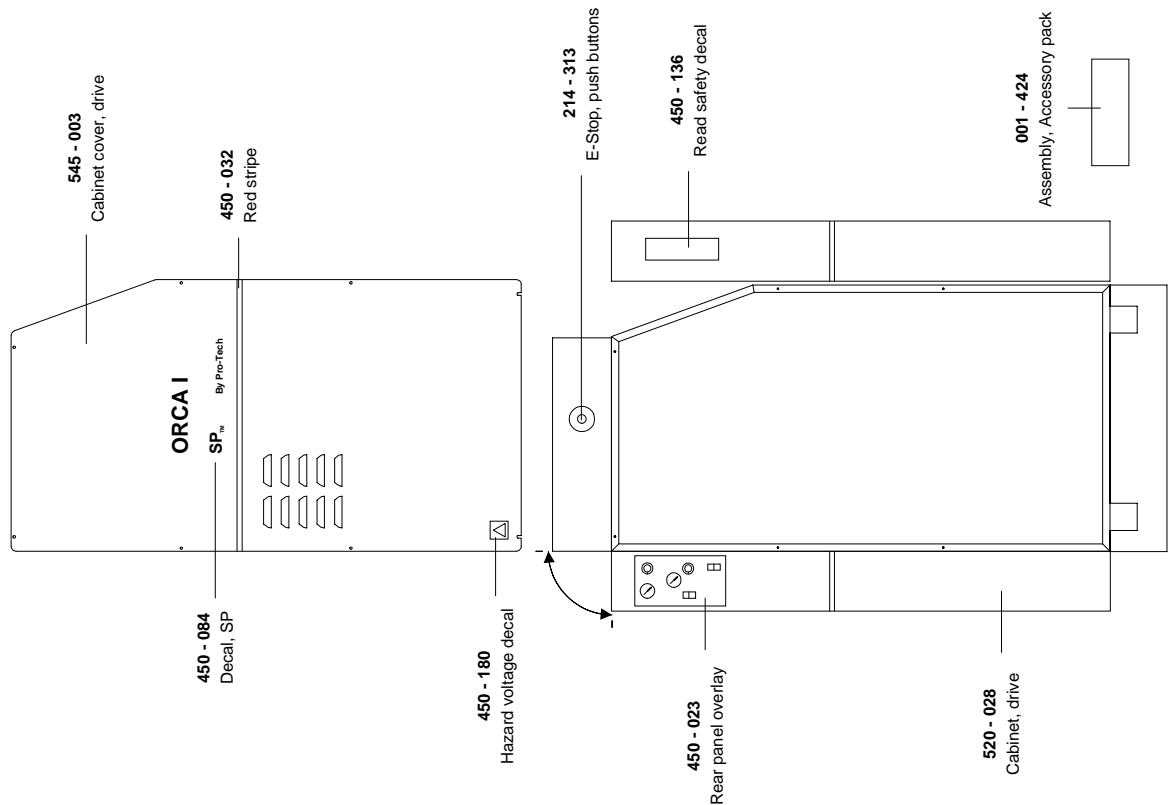
Orca I SP
Illustrated Parts Diagrams
(000 - 045)

Available Options ;
001 - 345 (Outfeed table)

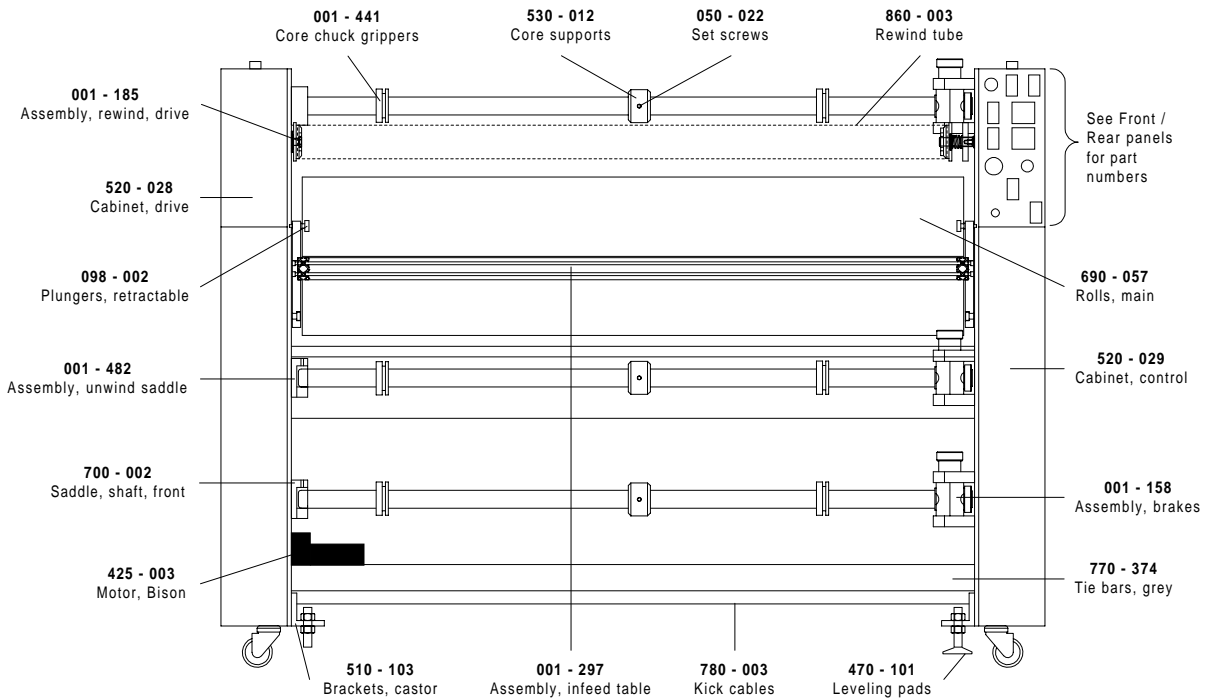
Control Side



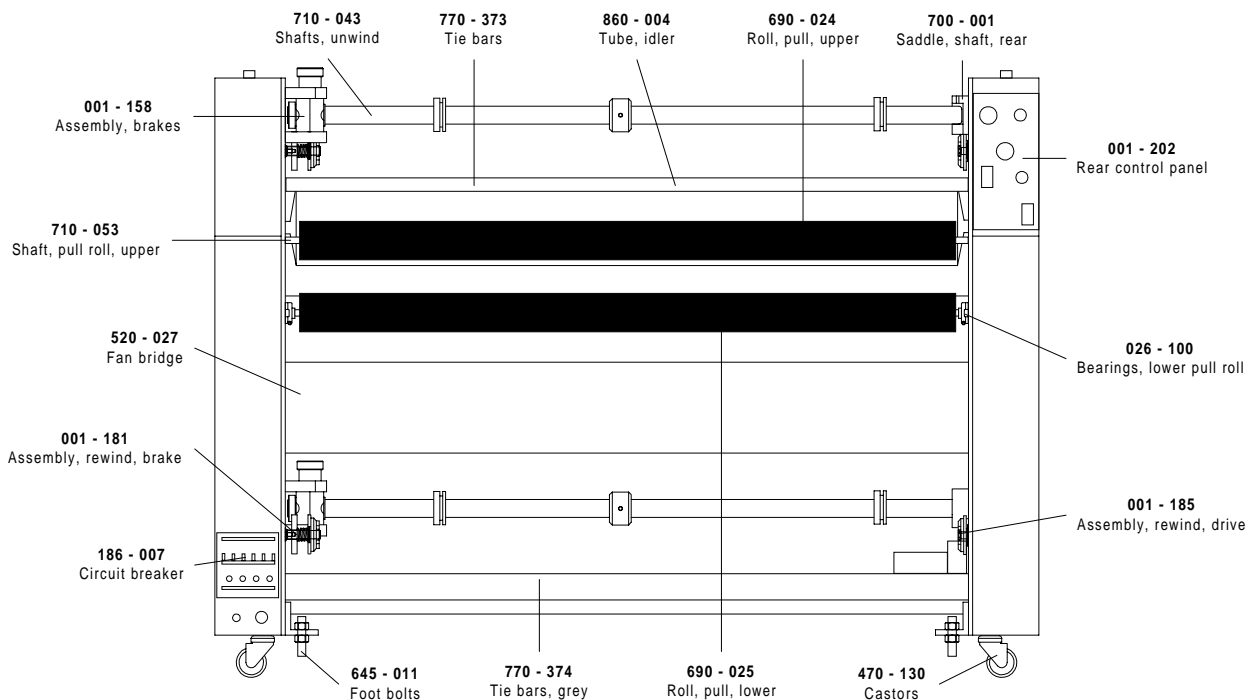
Drive Side

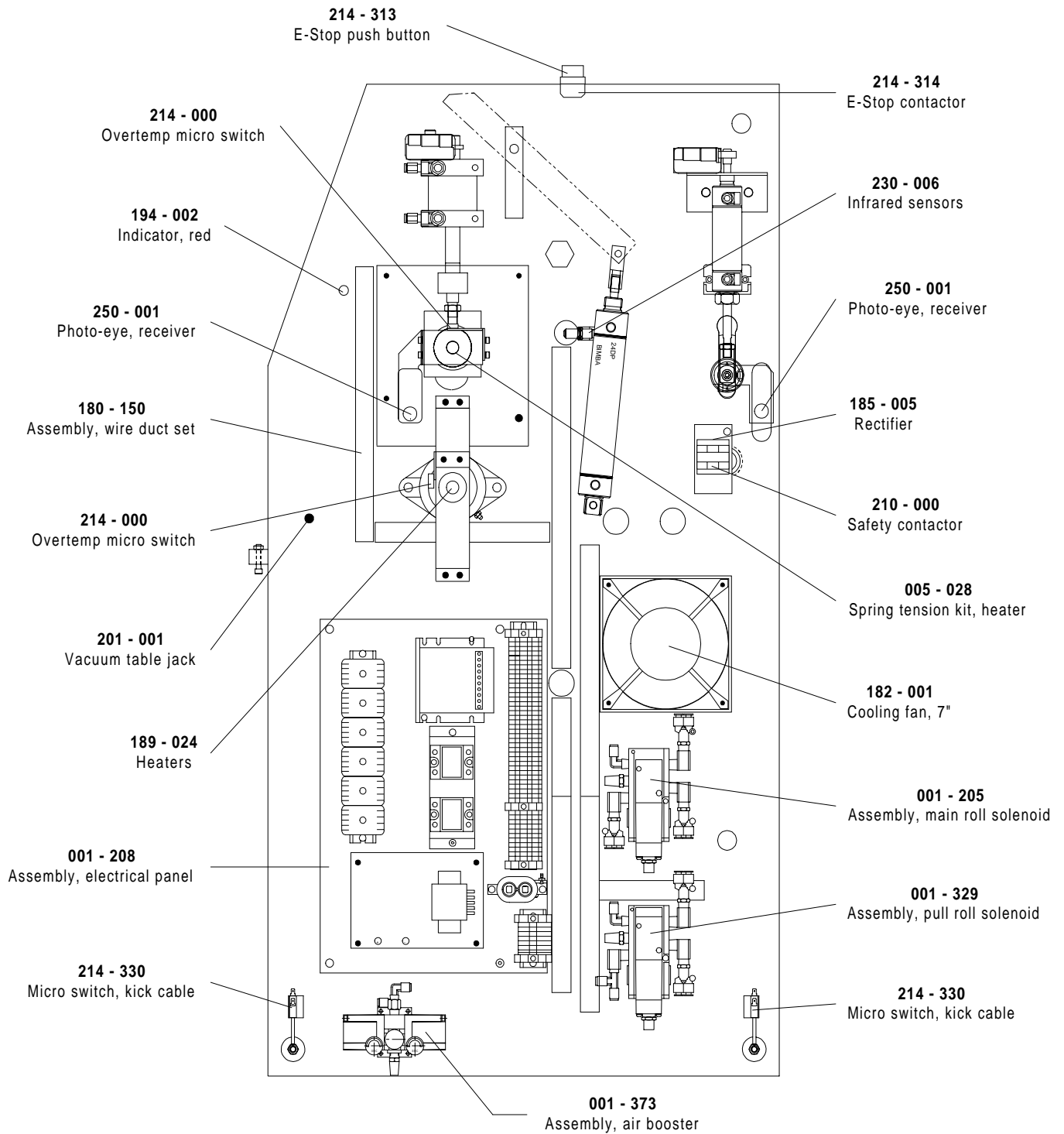


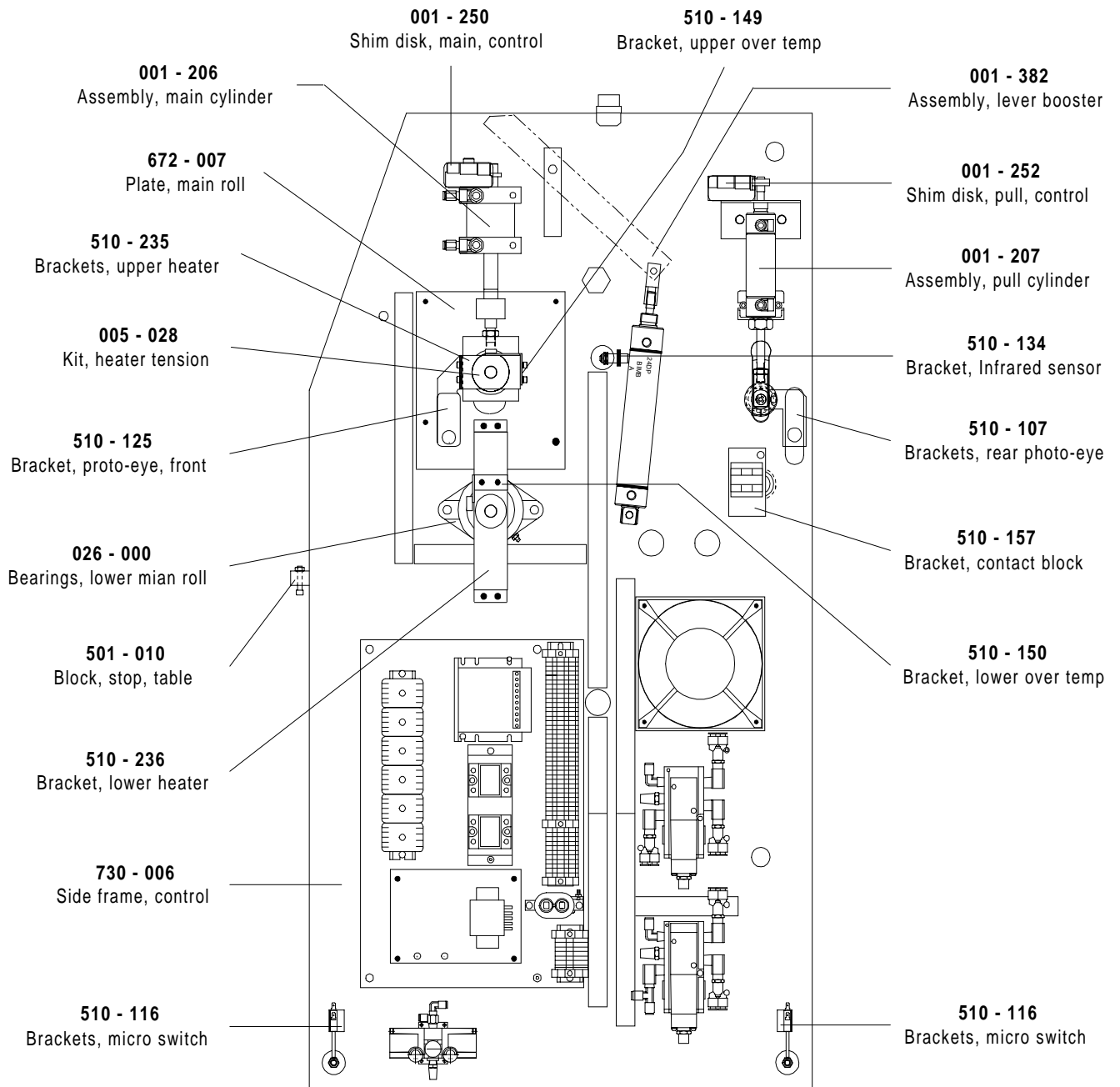
Front View

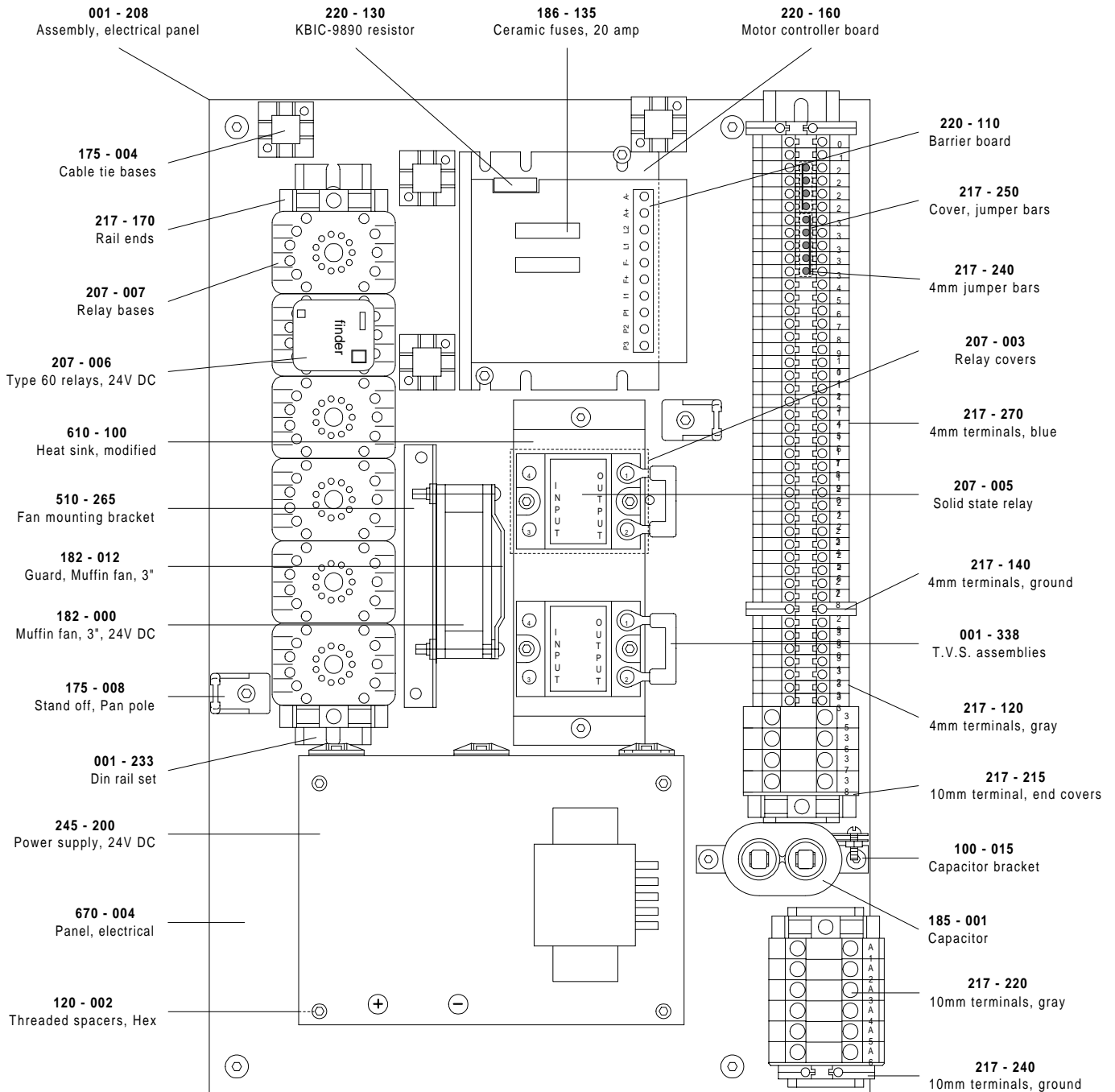


Rear View

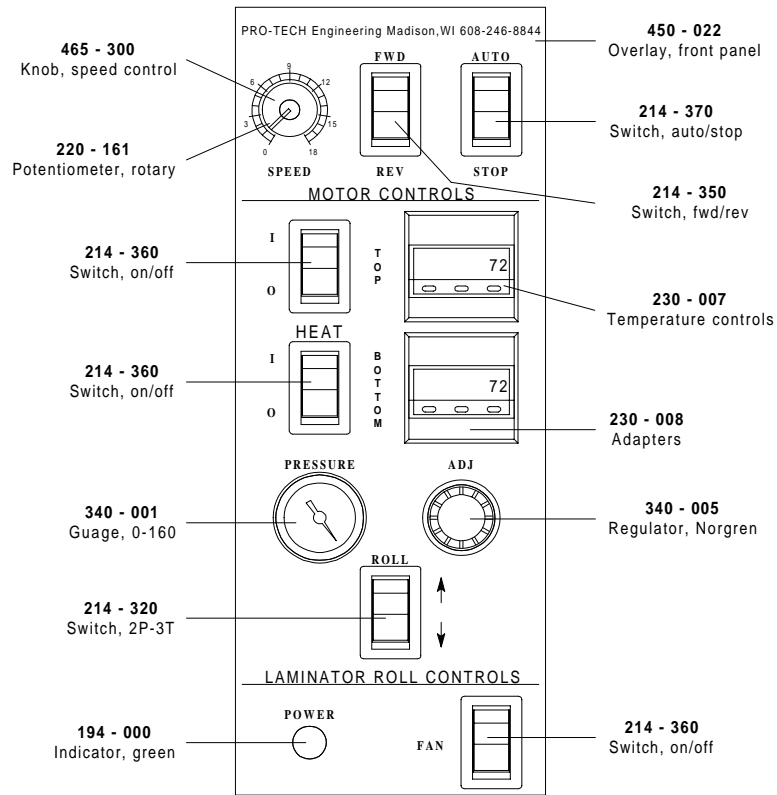




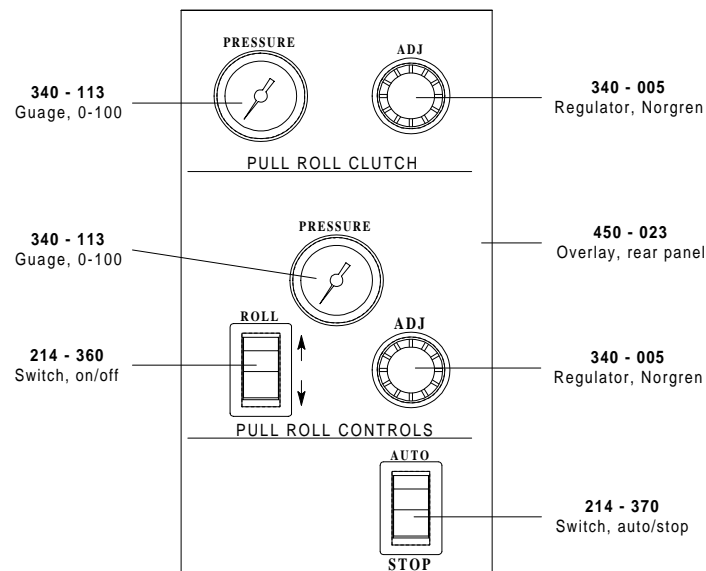


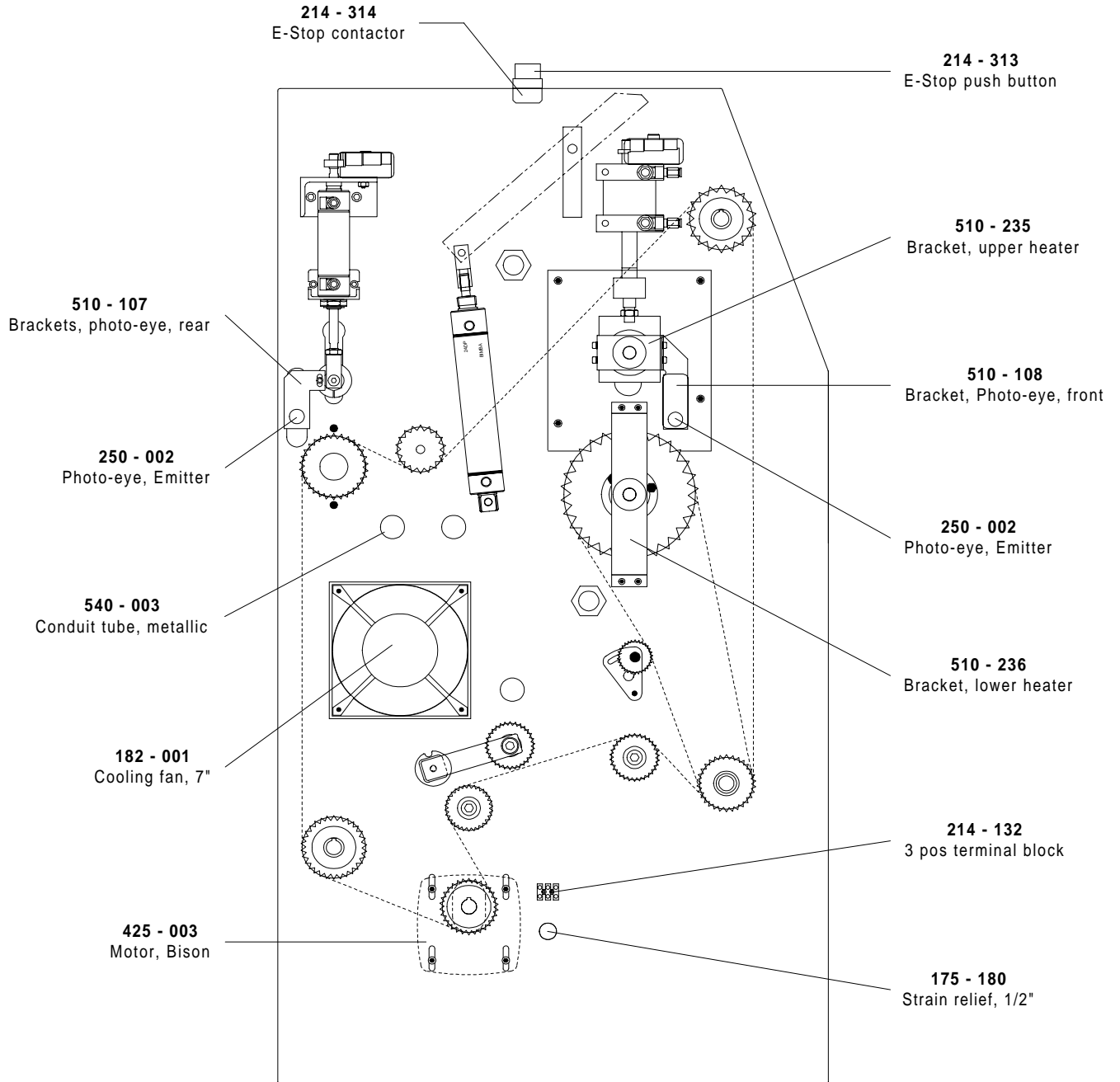


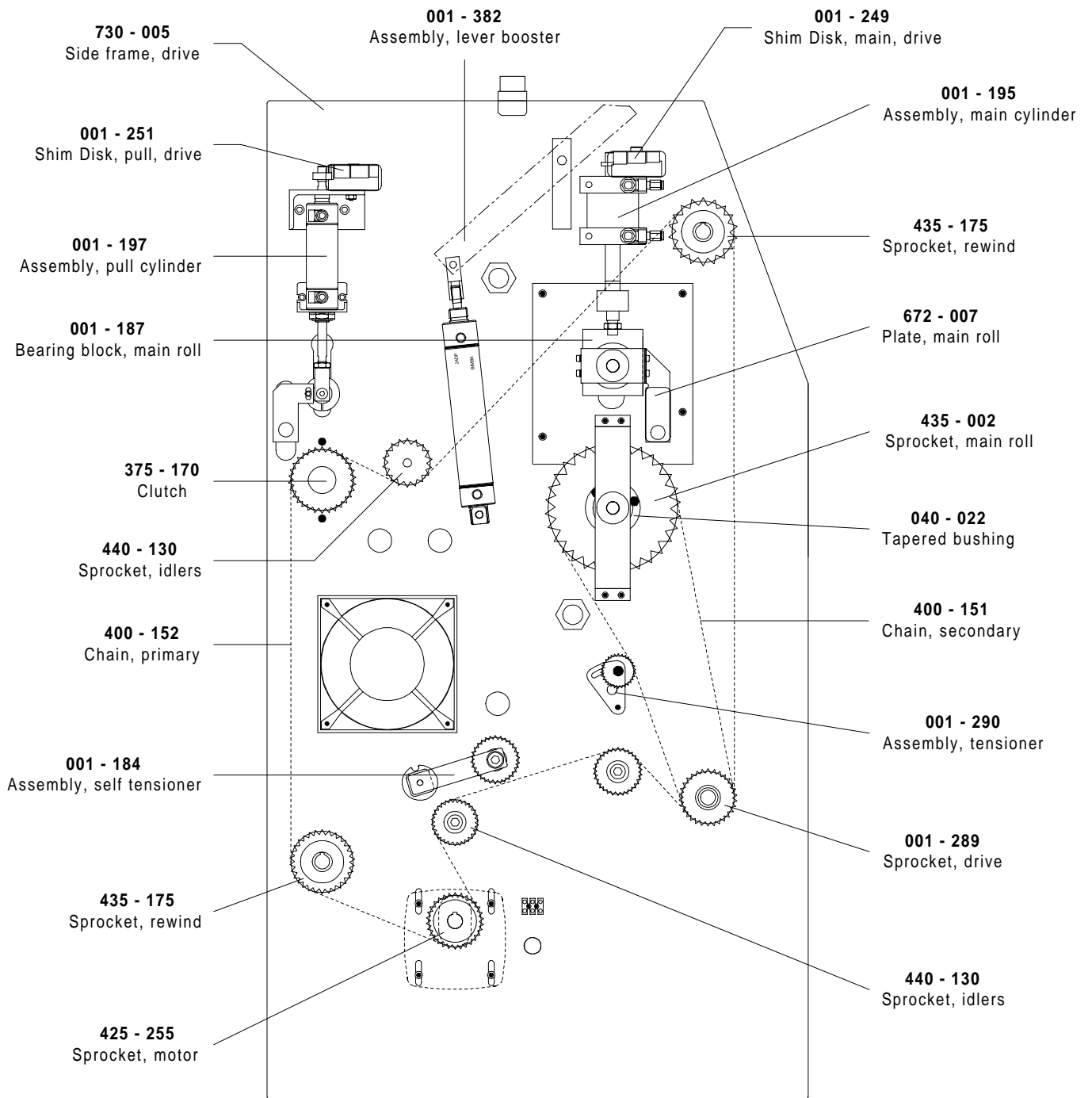
Front Control Panel



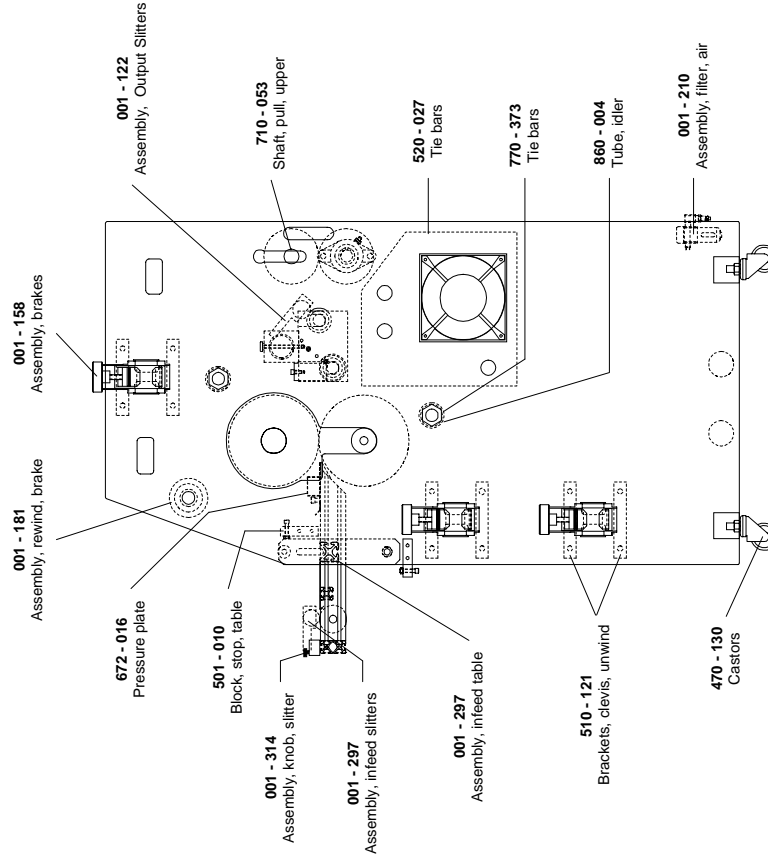
001 - 202 Rear Control Panel



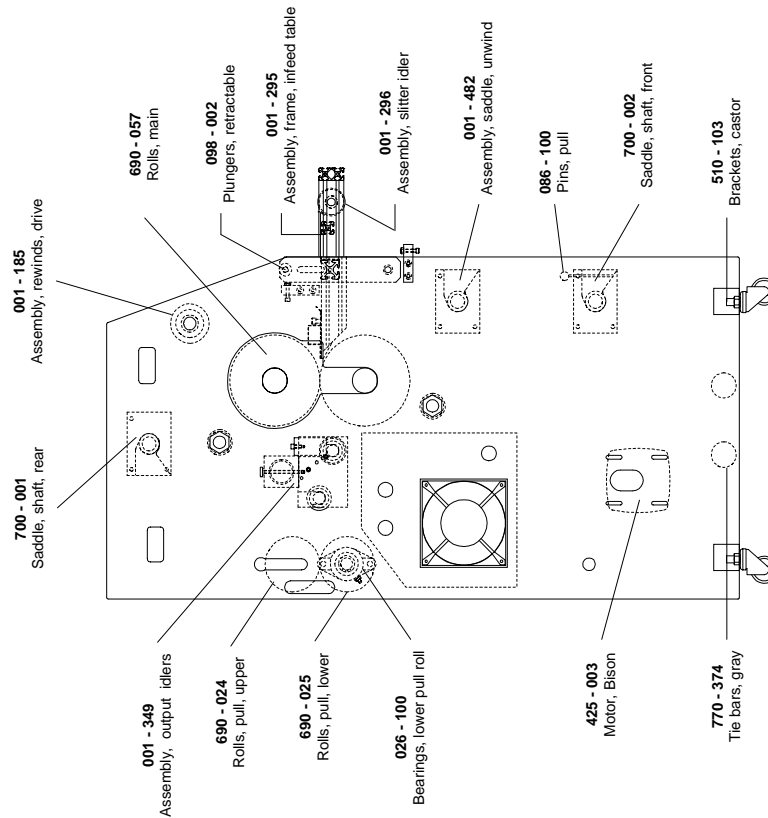




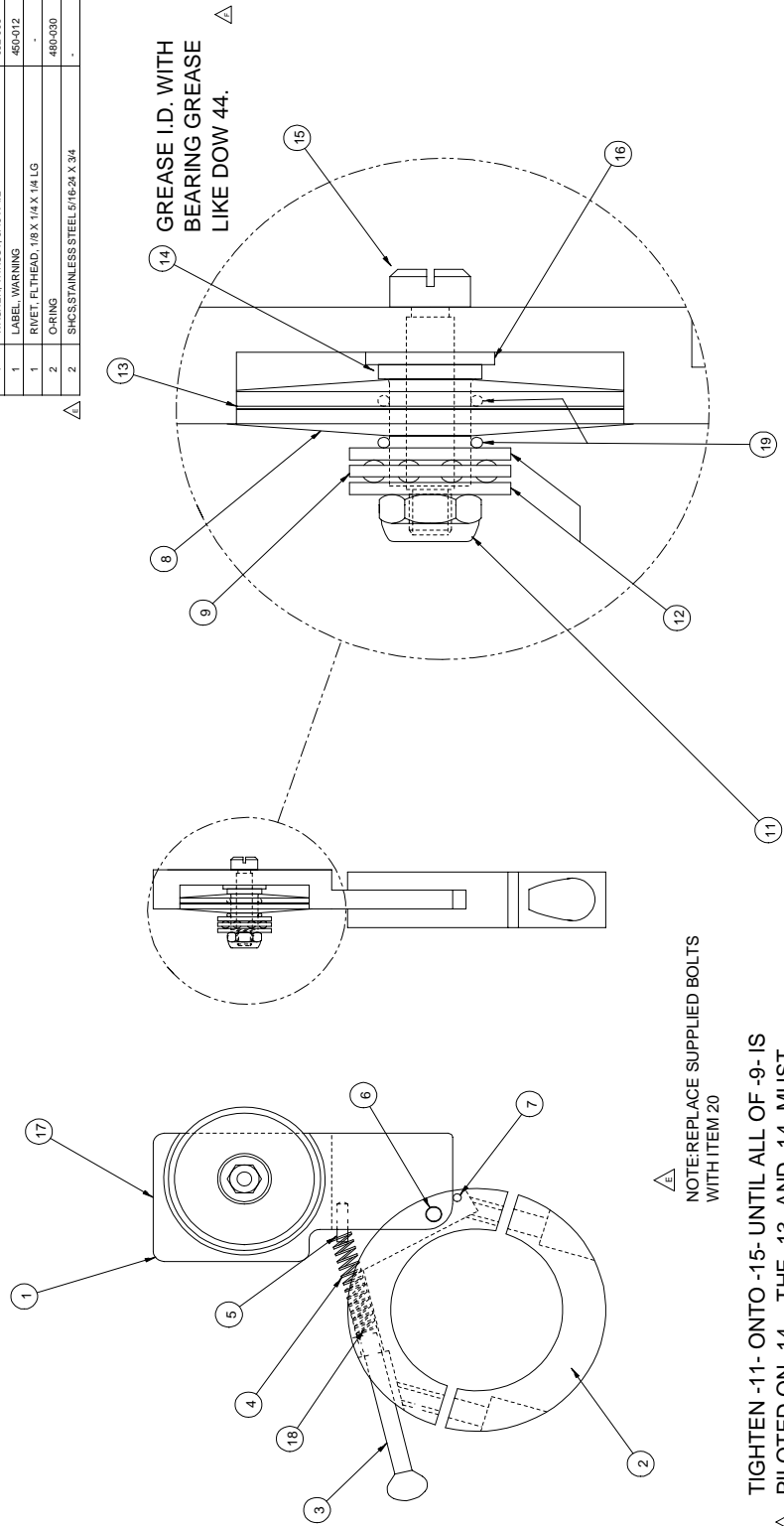
Control Side



Drive Side



REQD	DESCRIPTION	PART NO.	ITEM
1	ARM, SLITTER	740-006	1
1	COLLAR, INFEED SLITTER	740-052	2
1	SCREW, THUMB	505-010	3
1	SPRING, TENSION	089-150	4
1	ROLL PIN, 1/8 X 1/2 LG	085-100	5
1	DOWEL PIN, 3/16 X 1/2 LG	085-140	6
1	ROLL PIN, 3/32 X 5/8 LG	085-120	7
2	WASHER, CONCAVE	740-007	8
1	BEARING, THRUST, 5/16 X 5/8	032-003	9
1	NUT, NYLOCK, 8-32	-	10
2	WASHER, THRUST, 5/16 X 5/8	032-004	11
1	BLADE, SLITTER, CIRCULAR	475-001	12
1	FLANGED BUSHING, STEEL	040-037	14
1	STRIP, 3/16 X 3/4	050-032	15
1	WASHER, THRUST, 3/16 X 1/2	032-005	16
1	LABEL, WARNING	450-012	17
1	RFMET, FL THHEAD, 1/8 X 1/4 X 1/4 LG	-	18
2	ORING	480-030	19
2	SHCS, STAINLESS STEEL, 5/16x24 X 3/4	-	20

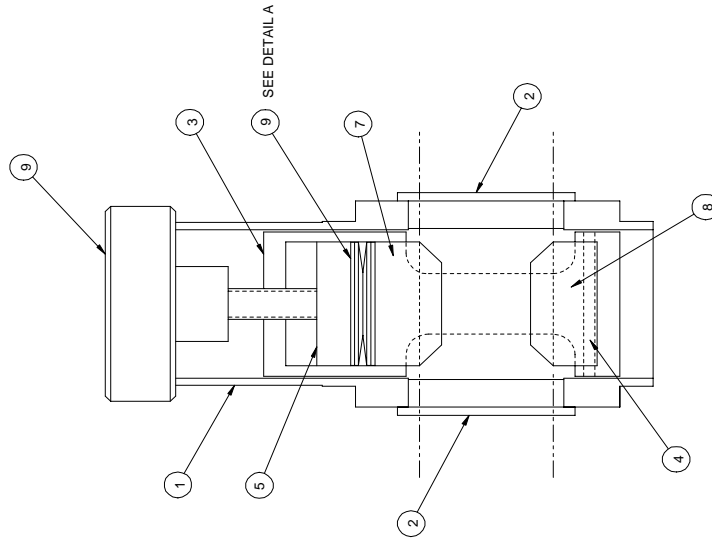
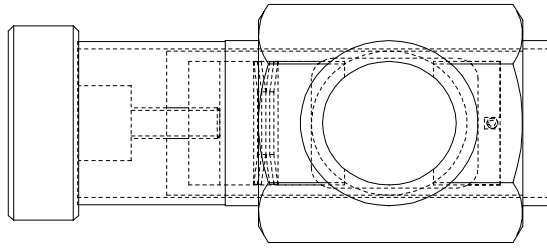
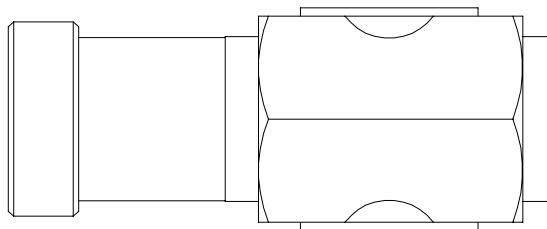
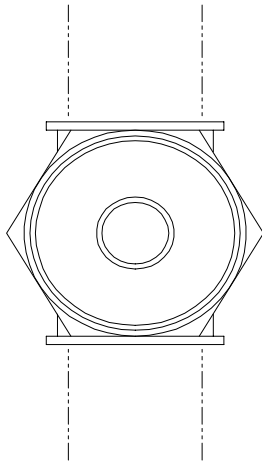


▲ NOTE: REPLACE SUPPLIED BOLTS WITH ITEM 20
 ▲ TIGHTEN -11- ONTO -15- UNTIL ALL OF -9- IS PILOTED ON -14-. THE -13- AND -14- MUST ROTATE FREELY TOGETHER ON -15-.
 ▲ BLUE LOCTITE -11- TO -15-.

REVISION		DATE	BY	DESCRIPTION
0442				
0667				
1013				
1122				
2591				
3006				
3270				

PRO-Tech Engineering	
11774 Coopers Rd. Lake Villa, IL 60047	
Phone: 815-338-8888 Fax: 815-338-8888	
TITLE	SLITTER, INPUT
DATE	02.03.01SP
SCALE	1:1
P.R.	C1
001-122	

REQD	DESCRIPTION	PART NO.	ITEM
1	PIN, PIVOT, UNWIND	625-008	1
2	BUSHING, FLANGE, NYLON	500-006	2
1	HOUSING, BRAKE	625-022	3
1	ROLL PIN, 1/8 X 1-3/4	095-105	4
1	PISTON, BRAKE	625-019	5
4	SPRING, DISC, 3/4 X 1-1/2	089-009	6
1	PAD, BRAKE, TOP	625-020	7
1	PAD, BRAKE, BOTTOM	625-021	8
1	KNOB, ADJUSTMENT, BRAKE	465-020	9



UDETAIL
DISC SPRING
ORIENTATION

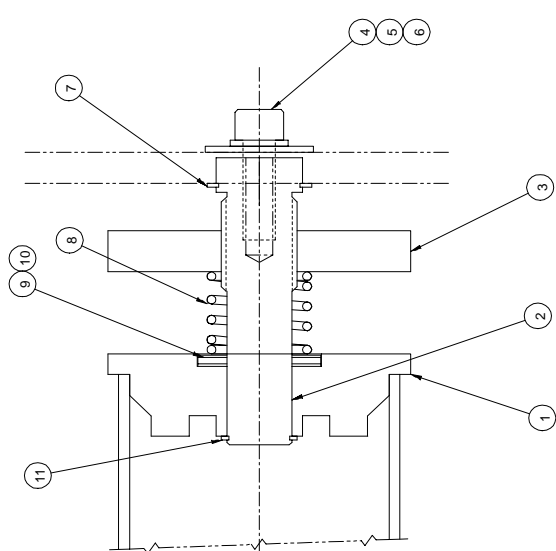
3X SCALE

SHEET 1		UNITS OF MEASURE		TOLERANCE		FINISH		DRILL		ANGLE		DATE		SCALE		DRAWN BY		CHECKED BY		DATE		SCALE		DRAWN BY		CHECKED BY		DATE	
0937	1161	1161	2507	2596	1161	1161	2507	2596	1161	1161	2507	2596	1161	1161	2507	2596	1161	1161	2507	2596	1161	1161	2507	2596	1161	1161	2507	2596	

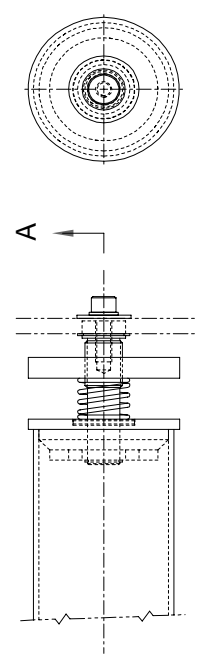
GBC Pro PROTECH
4577 Lakeview Blvd, Lakeview, Michigan
Phone: (989) 248-6888 Fax: (989) 248-6889

ASSEMBLY, BRAKE

REQ'D	DESCRIPTION	PART NO.	ITEM
1	PLUG, CLUTCH, ORCA I	X92-0112	1
1	SHAFT, REWIND, STANDOFF	X92-0113	2
1	KNOB, CLUTCH, KNURLED	625-007	3
1	3/8-16 X 1 LG SHCS	-	4
1	3/8 FLATWASHER	-	5
1	3/8 LOCKWASHER	-	6
1	SPRING CLIP, 5100-100	090-140	7
1	COMPRESSION SPRING, C1225-105-1500M	089-200	8
2	WASHER, THRUST, .030 THK	032-242	9
1	BEARING, THRUST	032-390	10
1	SNAP RING, 3/4 SHAFT, EXTERNAL	090-135	11



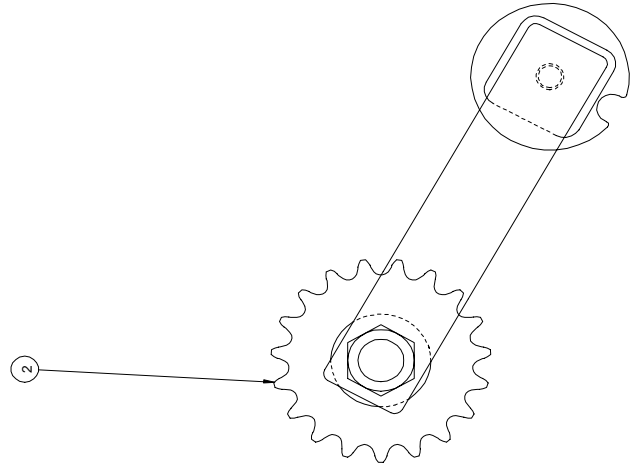
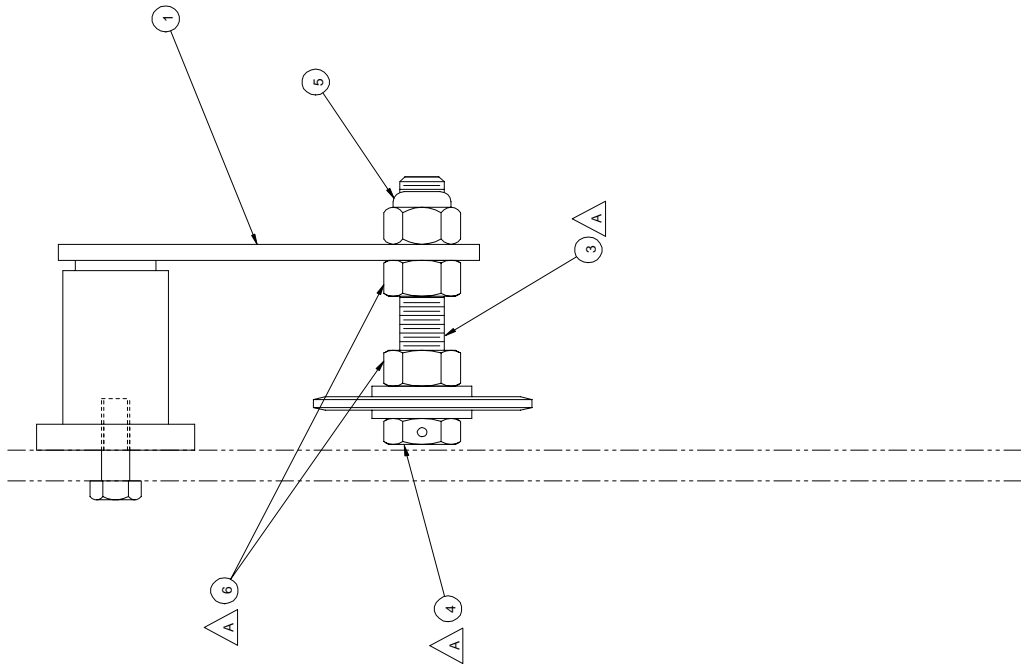
A-
SECTION
SCALE: 1:1



SHEET 1 OF 1		UNLESS OTHERWISE SPECIFIED	
UNIT	INCHES	FINISH	AS SHOWN
SCALE	AS SHOWN	TOLERANCES	AS SHOWN
DATE	11/28/94	DESIGNED BY	RMS
REVISION		CHECKED BY	
TITLE		SCALE	
ASSY, REWIND, BRAKE		1:1	
ORCA 1		C	
DRAWN BY		DATE	
RMS		11/28/94	
PROJECT NO.		001-181	

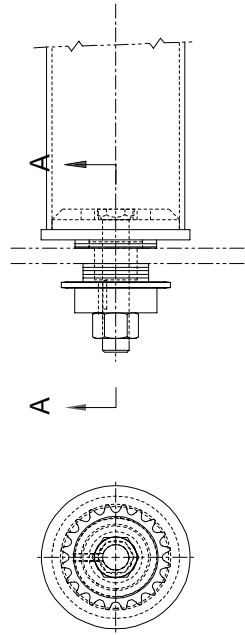
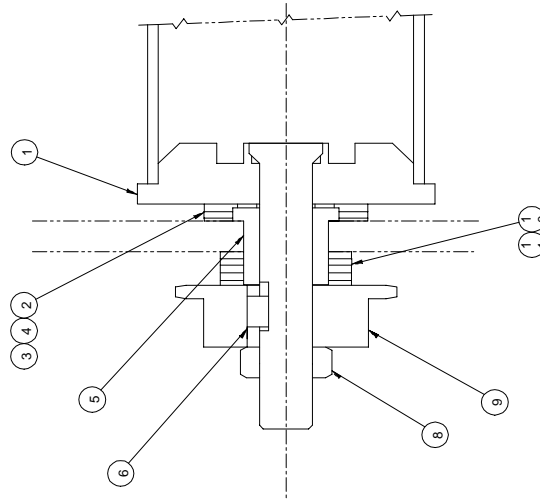


REQD	DESCRIPTION	PART NO.	ITEM
1	TENSIONER, CHAIN	440-150	1
1	SPROCKET, 19T	440-130	2
1	ROD, THREADED, 1/2 - 13 X 3.25	645-018	3
1	NUT, JAM, SELF-LOCKING, 1/2-13	-	4
1	NUT, NYLOCK, 1/2-13	-	5
2	NUT, 1/2-13	-	6



1063		DATE OF REVISION		PROJ. NO.																															
REV.	DESCRIPTION	DATE	BY	NO.	REV.																														
1																																			
1063		DATE OF REVISION		PROJ. NO.																															
REV.	DESCRIPTION	DATE	BY	NO.	REV.																														
1																																			
<table border="1"> <tr> <td colspan="3">TOLERANCES UNLESS OTHERWISE SPECIFIED</td> </tr> <tr> <td>FRACTIONS</td> <td>DECIMALS</td> <td>ANGLES</td> </tr> <tr> <td>FRACTIONS</td> <td>DECIMALS</td> <td>ANGLES</td> </tr> <tr> <td>FRACTIONS</td> <td>DECIMALS</td> <td>ANGLES</td> </tr> <tr> <td>FRACTIONS</td> <td>DECIMALS</td> <td>ANGLES</td> </tr> <tr> <td>FRACTIONS</td> <td>DECIMALS</td> <td>ANGLES</td> </tr> <tr> <td>FRACTIONS</td> <td>DECIMALS</td> <td>ANGLES</td> </tr> <tr> <td>FRACTIONS</td> <td>DECIMALS</td> <td>ANGLES</td> </tr> <tr> <td>FRACTIONS</td> <td>DECIMALS</td> <td>ANGLES</td> </tr> <tr> <td>FRACTIONS</td> <td>DECIMALS</td> <td>ANGLES</td> </tr> </table>						TOLERANCES UNLESS OTHERWISE SPECIFIED			FRACTIONS	DECIMALS	ANGLES	FRACTIONS	DECIMALS	ANGLES	FRACTIONS	DECIMALS	ANGLES	FRACTIONS	DECIMALS	ANGLES	FRACTIONS	DECIMALS	ANGLES	FRACTIONS	DECIMALS	ANGLES	FRACTIONS	DECIMALS	ANGLES	FRACTIONS	DECIMALS	ANGLES	FRACTIONS	DECIMALS	ANGLES
TOLERANCES UNLESS OTHERWISE SPECIFIED																																			
FRACTIONS	DECIMALS	ANGLES																																	
FRACTIONS	DECIMALS	ANGLES																																	
FRACTIONS	DECIMALS	ANGLES																																	
FRACTIONS	DECIMALS	ANGLES																																	
FRACTIONS	DECIMALS	ANGLES																																	
FRACTIONS	DECIMALS	ANGLES																																	
FRACTIONS	DECIMALS	ANGLES																																	
FRACTIONS	DECIMALS	ANGLES																																	
FRACTIONS	DECIMALS	ANGLES																																	
<table border="1"> <tr> <td>DATE</td> <td>BY</td> <td>NO.</td> </tr> <tr> <td>DATE</td> <td>BY</td> <td>NO.</td> </tr> <tr> <td>DATE</td> <td>BY</td> <td>NO.</td> </tr> <tr> <td>DATE</td> <td>BY</td> <td>NO.</td> </tr> </table>						DATE	BY	NO.	DATE	BY	NO.	DATE	BY	NO.	DATE	BY	NO.																		
DATE	BY	NO.																																	
DATE	BY	NO.																																	
DATE	BY	NO.																																	
DATE	BY	NO.																																	
<table border="1"> <tr> <td colspan="3">PROJ. NO.</td> </tr> <tr> <td colspan="3">PROJ. NO.</td> </tr> <tr> <td colspan="3">PROJ. NO.</td> </tr> <tr> <td colspan="3">PROJ. NO.</td> </tr> <tr> <td colspan="3">PROJ. NO.</td> </tr> <tr> <td colspan="3">PROJ. NO.</td> </tr> <tr> <td colspan="3">PROJ. NO.</td> </tr> <tr> <td colspan="3">PROJ. NO.</td> </tr> <tr> <td colspan="3">PROJ. NO.</td> </tr> <tr> <td colspan="3">PROJ. NO.</td> </tr> </table>						PROJ. NO.			PROJ. NO.			PROJ. NO.			PROJ. NO.			PROJ. NO.			PROJ. NO.			PROJ. NO.			PROJ. NO.			PROJ. NO.			PROJ. NO.		
PROJ. NO.																																			
PROJ. NO.																																			
PROJ. NO.																																			
PROJ. NO.																																			
PROJ. NO.																																			
PROJ. NO.																																			
PROJ. NO.																																			
PROJ. NO.																																			
PROJ. NO.																																			
PROJ. NO.																																			
<table border="1"> <tr> <td colspan="3">PROJ. NO.</td> </tr> <tr> <td colspan="3">PROJ. NO.</td> </tr> <tr> <td colspan="3">PROJ. NO.</td> </tr> <tr> <td colspan="3">PROJ. NO.</td> </tr> <tr> <td colspan="3">PROJ. NO.</td> </tr> <tr> <td colspan="3">PROJ. NO.</td> </tr> <tr> <td colspan="3">PROJ. NO.</td> </tr> <tr> <td colspan="3">PROJ. NO.</td> </tr> <tr> <td colspan="3">PROJ. NO.</td> </tr> <tr> <td colspan="3">PROJ. NO.</td> </tr> </table>						PROJ. NO.			PROJ. NO.			PROJ. NO.			PROJ. NO.			PROJ. NO.			PROJ. NO.			PROJ. NO.			PROJ. NO.			PROJ. NO.			PROJ. NO.		
PROJ. NO.																																			
PROJ. NO.																																			
PROJ. NO.																																			
PROJ. NO.																																			
PROJ. NO.																																			
PROJ. NO.																																			
PROJ. NO.																																			
PROJ. NO.																																			
PROJ. NO.																																			
PROJ. NO.																																			
<table border="1"> <tr> <td colspan="3">PROJ. NO.</td> </tr> <tr> <td colspan="3">PROJ. NO.</td> </tr> <tr> <td colspan="3">PROJ. NO.</td> </tr> <tr> <td colspan="3">PROJ. NO.</td> </tr> <tr> <td colspan="3">PROJ. NO.</td> </tr> <tr> <td colspan="3">PROJ. NO.</td> </tr> <tr> <td colspan="3">PROJ. NO.</td> </tr> <tr> <td colspan="3">PROJ. NO.</td> </tr> <tr> <td colspan="3">PROJ. NO.</td> </tr> <tr> <td colspan="3">PROJ. NO.</td> </tr> </table>						PROJ. NO.			PROJ. NO.			PROJ. NO.			PROJ. NO.			PROJ. NO.			PROJ. NO.			PROJ. NO.			PROJ. NO.			PROJ. NO.			PROJ. NO.		
PROJ. NO.																																			
PROJ. NO.																																			
PROJ. NO.																																			
PROJ. NO.																																			
PROJ. NO.																																			
PROJ. NO.																																			
PROJ. NO.																																			
PROJ. NO.																																			
PROJ. NO.																																			
PROJ. NO.																																			

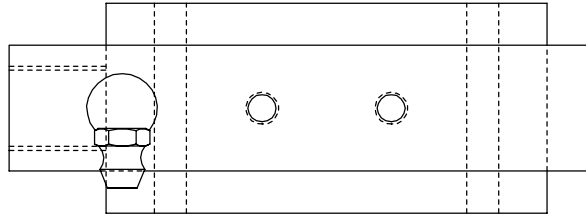
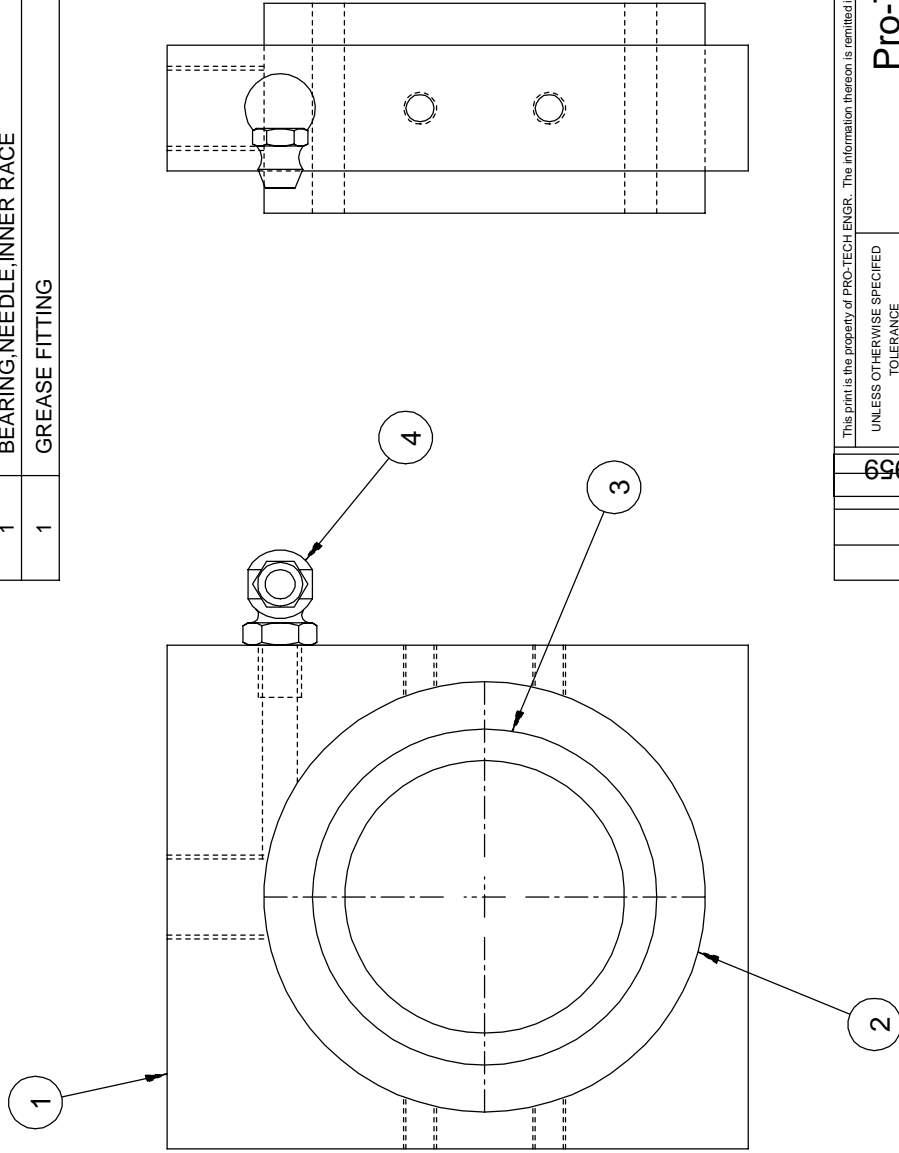
REQ'D	DESCRIPTION	PART NO.	ITEM
1	PLUG, CLUTCH DRIVE	001-261	1
1	WASHER, THRUST, .090 THK	032-420	2
1	WASHER, THRUST, .030 THK	032-410	3
1	BEARING, THRUST	032-400	4
1	BUSHING, BOST-BRONZE	500-003	5
1	KEY, 1/4 X 1/4 X 3/8 LG	-	6
-	-	-	7
1	LOCK NUT, 5/8-11	-	8
1	SPROCKET, 35BS20x5/8	435-175	9
4	WASHER, THRUST, .090 THK	032-205	10
1	BEARING, THRUST	032-190	11



SECTION A-A
SCALE: 2/1

SHEET 1		PRO-TECH	
UNLESS OTHERWISE SPECIFIED		1875 LINDEN BLVD. #1000	
QTY	UNIT	DATE	BY
1	1		
2	1		
3	1		
4	1		
5	1		
6	1		
7	1		
8	1		
9	1		
10	1		
11	1		
TITLE		ASSY. REWIND, ORCA DRIVE	
SCALE		1:2 C	
DRAWN		185	
CHECKED		185	
APPROVED		185	

REQD	DESCRIPTION	PART NO.	ITEM
1	BLOCK, BEARING, MAIN ROLL, ORCA I	501-009	1
1	BEARING, NEEDLE, OUTER RACE	028-000	2
1	BEARING, NEEDLE, INNER RACE	028-001	3
1	GREASE FITTING	060-005	4

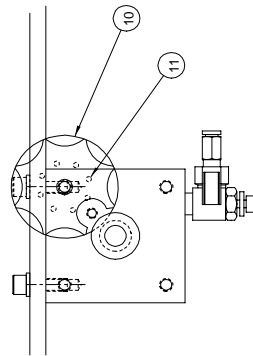


This print is the property of PRO-TECH ENGR. The information hereon is reprinted in confidence. UNLESS OTHERWISE SPECIFIED		FINISH TO BE 125	
DIM. AS SHOWN	TOL.	ANGLES P ID	
XX	P .1/64	P .010	
X.	P .050	P .005	
XX	P .020	DATE: 11-17-94	
X.XX	P .010	DRAWN BY: K.L.	
X.XXX	P .005	DWG SCALE: A1	
TITLE: BLK, BRG, LEFT, MAIN ROLL ORCA I		Dwg: 001-187	

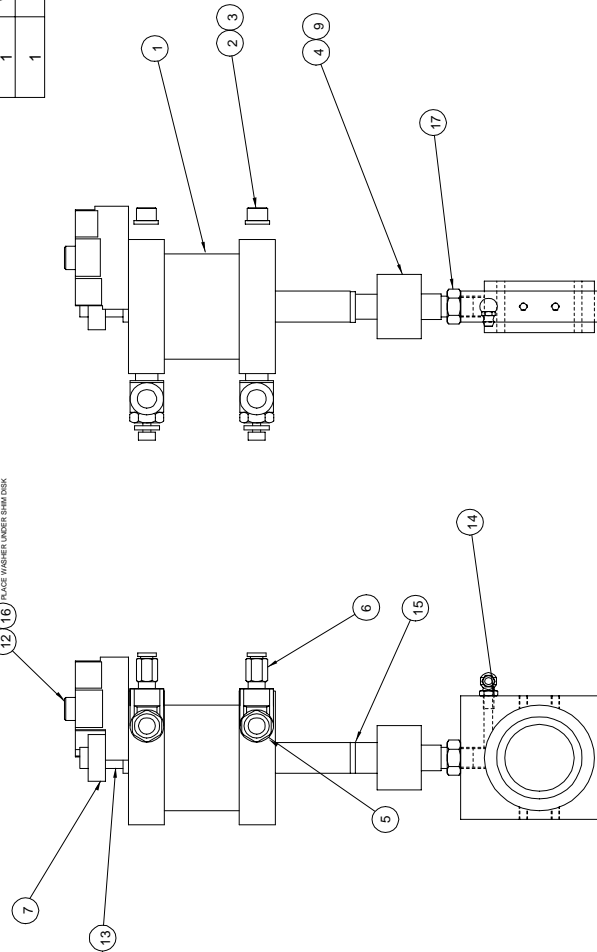
Pro-Tech Engineering
 2117 N. Stoughton Rd. Madison, Wisconsin 53704
 Phone (608) 246-8644 Fax (608) 246-8645

**BLK, BRG, LEFT, MAIN ROLL
 ORCA I**

REQ'D	DESCRIPTION	PART NO.	ITEM
1	CYLINDER,2.5 X 1.75	320-320	1
4	SHCS,5/16-18 X .75	-	2
4	WASHER,LOCK,5/16	-	3
1	COUPLING,ROD END,1/2-20	325-000	4
2	CONTROL FLOW	330-130	5
2	FITTING,STRAIGHT,1/4NPT X 1/4	330-600	6
1	LOCK COLLAR,1/2-20	290-260	7
1	SHCS,1/2-20 X .5	-	8
1	STUD, THREADED, 1/2 - 20 x 1"	645-007	9
1	ASSEMBLY,SHIM DISK,LEFT	001-249	10
1	PLUNGER,SPRING,1/4-20	098-120	11
1	BOLT,SHOULDER,3/8,1.0,5/16-18	-	12
1	STUD, THREADED, 1/2 - 20 x 1-3/4"	645-006	13
1	ASSEMBLY,BLOCK,BEARING,LEFT,MAIN ROLL	001-187	14
1	WASHER,THRUST,.060	068-100	15
1	WASHER,THRUST,.312 X .06	032-360	16
1	1/2-20 HEX JAM NUT	-	17



12 16 PLACE WASHER UNDER SHIM DISK



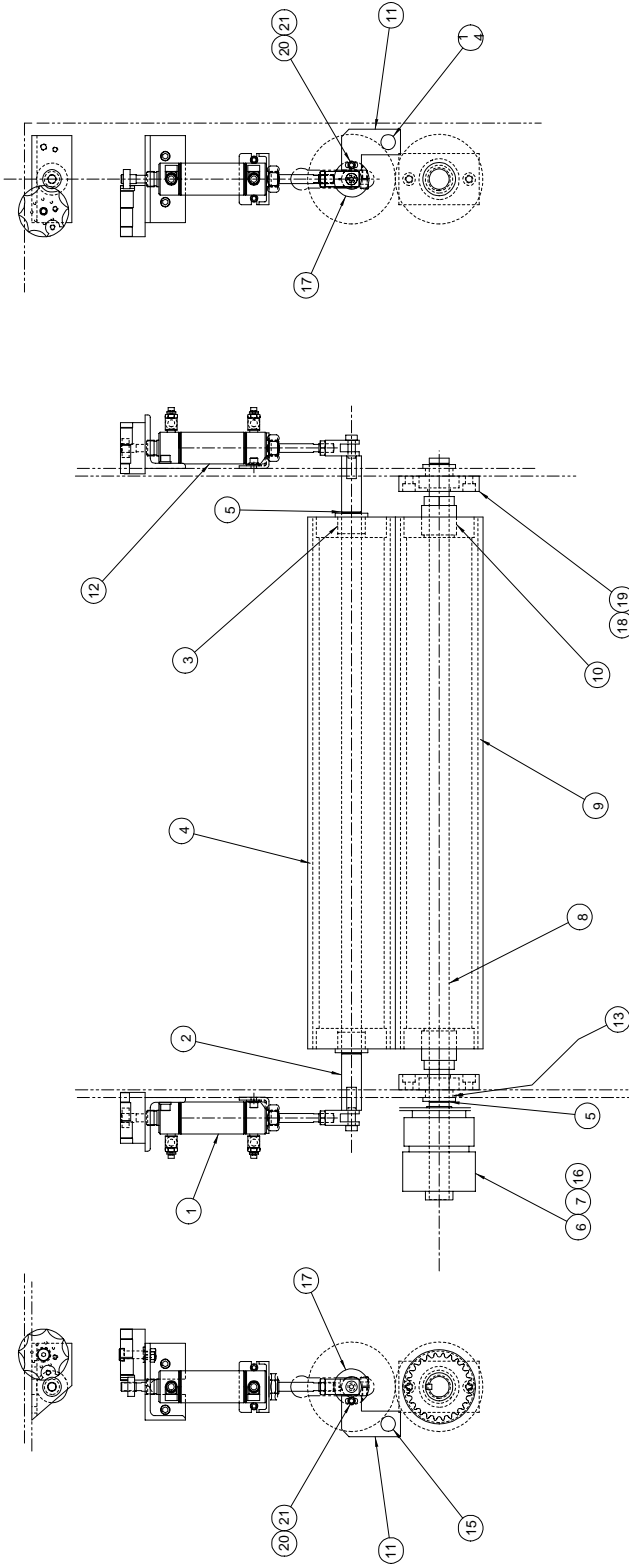
2745	4-8	2539	4-8
0984	4-8	0968	4-8
0913	4-8	0913	4-8
0892	4-8	0892	4-8

UNAPPROVED REVISIONS	DATE	BY	REASON

PROJ. NO.	001-195
TITLE	ASSEMBLY,CYLINDER,MAINLEFT
DATE	11-29-84
DESIGNER	RAS
DWG. SCALE	C2

PROJ. NO.	001-195
TITLE	ASSEMBLY,CYLINDER,MAINLEFT
DATE	11-29-84
DESIGNER	RAS
DWG. SCALE	C2

REC'D	DESCRIPTION	PART NO.	ITEM
1	ASSEMBLY,CYLINDER,PULL ROLL,F	001-197	1
1	SHAFT,PULL UPPER	710-041	2
2	BUSHING,BRONZE,1.138,1	040-015	3
1	ROLL,PULL,UPPER,ORCA I	690-027	4
4	RING,SNAP,1.0	090-140	5
1	CLUTCH	375-170	6
1	FITTING,STRAIGHT,1/8 X 1/4	330-590	7
1	SHAFT,ROLL,PULL,LOWER	710-042	8
1	ROLL,PULL,LOWER	690-028	9
2	BUSHING,KEYLESS,1.175	040-017	10
2	BRACKET,MOUNTING,PHOTOEYE,PULL,ROLL	510-107	11
1	ASSEMBLY,CYLINDER,PULL,ROLL,R	001-207	12
2	WASHER,THRUST,1.0 X .06	032-250	13
1	SWITCH,PHOTOEYE,EMITTER	250-002	14
1	SWITCH,PHOTOEYE,RECEIVER	250-001	15
1	EYEBOLT,1/4-20	-	16
2	LOCK COLLAR,MODIFIED	640-001	17
2	ASSEMBLY,BEARING	001-288	18
4	SHCS,3/8-16 X .75	-	19
2	SHCS,1/4-20 X .38	-	20
2	WASHER,LOCK,1/4	-	21



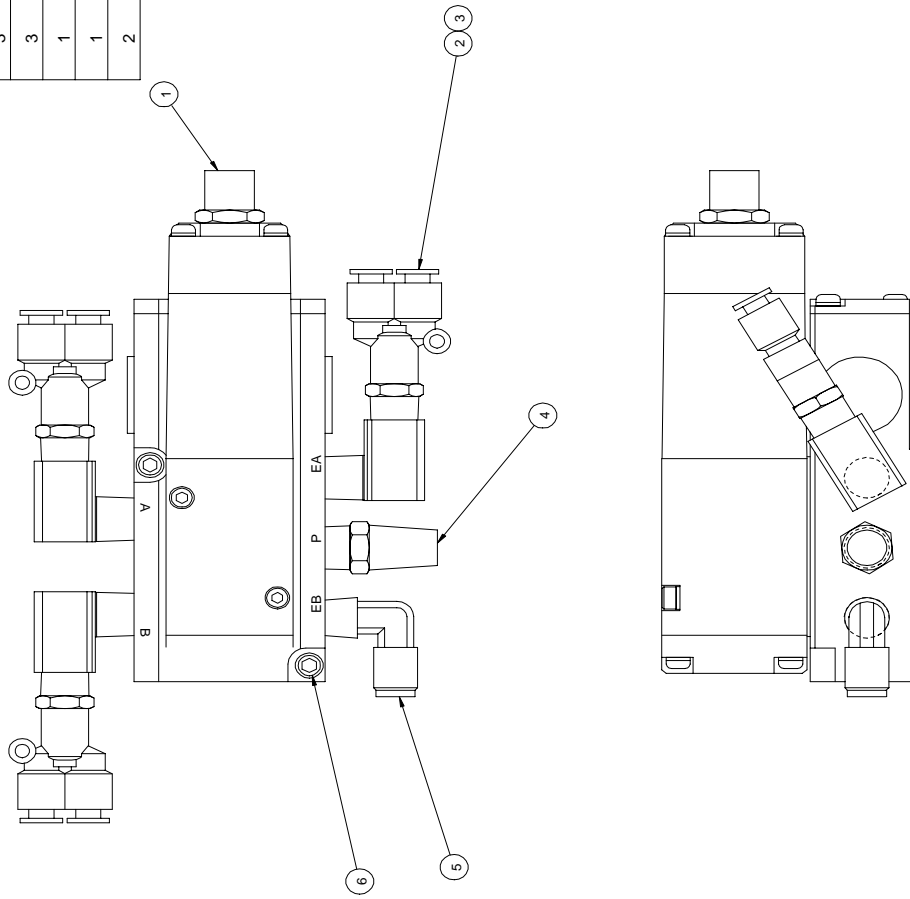
PREPARED BY: [] CHECKED BY: [] DATE: []		TITLE: ASSEMBLY,ROLL,PULL PROJECT: []	
DESIGNED BY: [] DATE: []	DRAWN BY: [] DATE: []	APPROVED BY: [] DATE: []	DRAWN DATE: []
PART NO.: 001-196	REV: []	QTY: []	UNIT: []

REQD	DESCRIPTION	PART NO.	ITEM
1	CYLINDER, 1.5 X 2	320-190	1
1	CLEVIS CYLINDER, 7/16-20	325-001	2
1	SCREW, SHOULDER, 3/8 X 1.5, 1/16-18	-	3
2	CONTROL FLOW, 1/8 NPT	330-120	4
2	FITTING, STRAIGHT, 1/8 X 1/4	330-590	5
1	BRACKET, MOUNTING, CYLINDER	325-110	6
1	NUT, HEX, 3/4-16	-	7
2	SHCS, 1/4-20 X .5	-	8
2	WASHER, LOCK, 1/4	-	9
1	BRACKET, SHIM DISK, LEFT	510-220	10
2	SHCS, 5/16-18 X .62	-	11
2	WASHER, LOCK, 5/16	-	12
1	COLLAR, LOCK, 7/16	290-220	13
1	ASSEMBLY, SHIM DISK, PULL, LEFT	001-251	14
1	WASHER, THRUST, .312 X .06	082-360	15
1	PLUNGER, SPRING, 1/4-20	088-120	16
1	NUT, HEX, JAM	-	17
1	BOLT, SHOULDER, 3/8, 1.0, 5/16-18	-	18
1	NUT, HEX, 5/16-18	-	19

SHEET 1 OF 1		UNLESS OTHERWISE SPECIFIED		FINISH TO BE	
REV	DATE	BY	CHK AS SHOWN	TOL.	1/32
0915	4-01-95	RAS			
1044	2-18-95	RAS			
1089	8-25-95	RAS			
2665	2-18-97	RAS			
2745	5-27-97	RAS			

DRAWN BY: RAS		SCALE: 1:2	SIZE: B	DWG NO: 001-197
DATE: 11-29-94		TITLE: ASSY, CYLINDER, PULL ROLL, LEFT		
RELEASE NO:		GBC PRO-TECH		
4151 American Road, Defused, Wisconsin 5302		Phone: (608) 248-8444 Fax: (608) 248-8645		

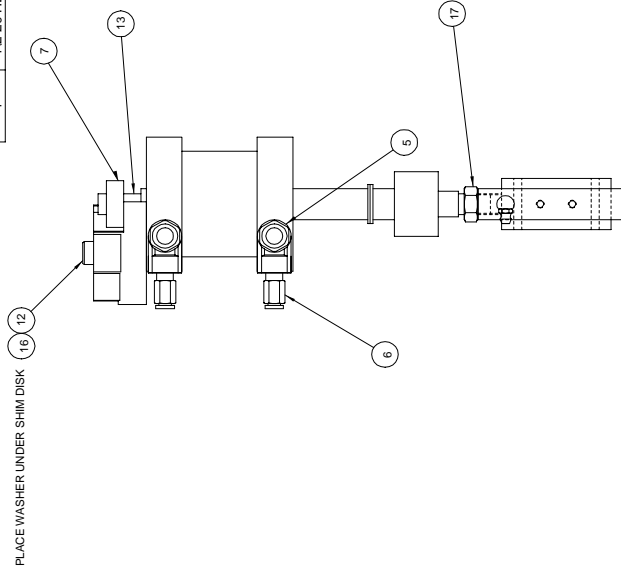
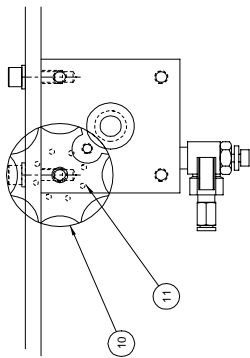
REQD	DESCRIPTION	PART NO.	ITEM
1	VALVE, AIR, SOLENOID	350-115	1
3	FITTING, AIR, ELBOW, 1/4NPT	330-760	2
3	Y-FITTING, 1/4NPT	330-310	3
1	MUFFLER, AIR	330-280	4
1	FITTING, AIR, ELBOW, MALE 1/4 NPT	330-730	5
2	CAP SCREWS, SOCKET, #10-32 X 1-1/4 LG	-	6



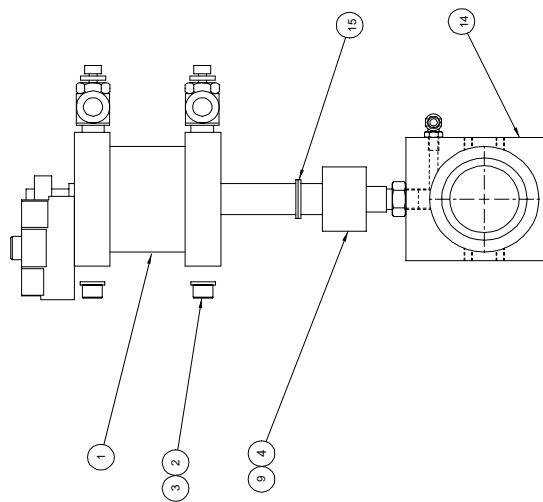
ROTATE FITTINGS AS REQUIRED FOR BEST ASSEMBLY

UNLESS OTHERWISE SPECIFIED, THE FOLLOWING APPLIES:		Pro-Tech Engineering 1111 Engineering 1111 Engineering 1111 Engineering	
REV	DATE	BY	CHK
1	12-8-	JKL	1
TITLE		001-205	
ASSEMBLY VALVE CONTROL			

REQD	DESCRIPTION	PART NO.	ITEM
1	CYLINDER, 2.5 X 1.75	320-320	1
4	SHCS, 5/16-18 X .75	-	2
4	WASHER, LOCK, 5/16	-	3
1	COUPLING ROD END, 1/2-20	325-000	4
2	CONTROL FLOW	330-130	5
2	FITTING, STRAIGHT, 1/4NPT X 1/4	330-600	6
1	LOCK COLLAR, 1/2-20	290-260	7
1	SHCS, 1/2-20 X .5	-	8
1	STUD, THREADED, 1/2 - 20 x 1"	645-007	9
1	ASSEMBLY, SHIM DISK, MAIN, RIGHT	001-250	10
1	PLUNGER, SPRING, 1/4-20	098-120	11
1	BOLT, SHOULDER, 3/8, 1.0, 5/16-18	-	12
1	STUD, THREADED, 1/2 - 20 x 1-3/4"	645-006	13
1	ASSEMBLY BLOCK, BEARING	001-187	14
2	WASHER, THRUST, .06	032-140	15
1	WASHER, THRUST, .312 X .06	032-360	16
1	1/2-20 HEX JAM NUT	-	17

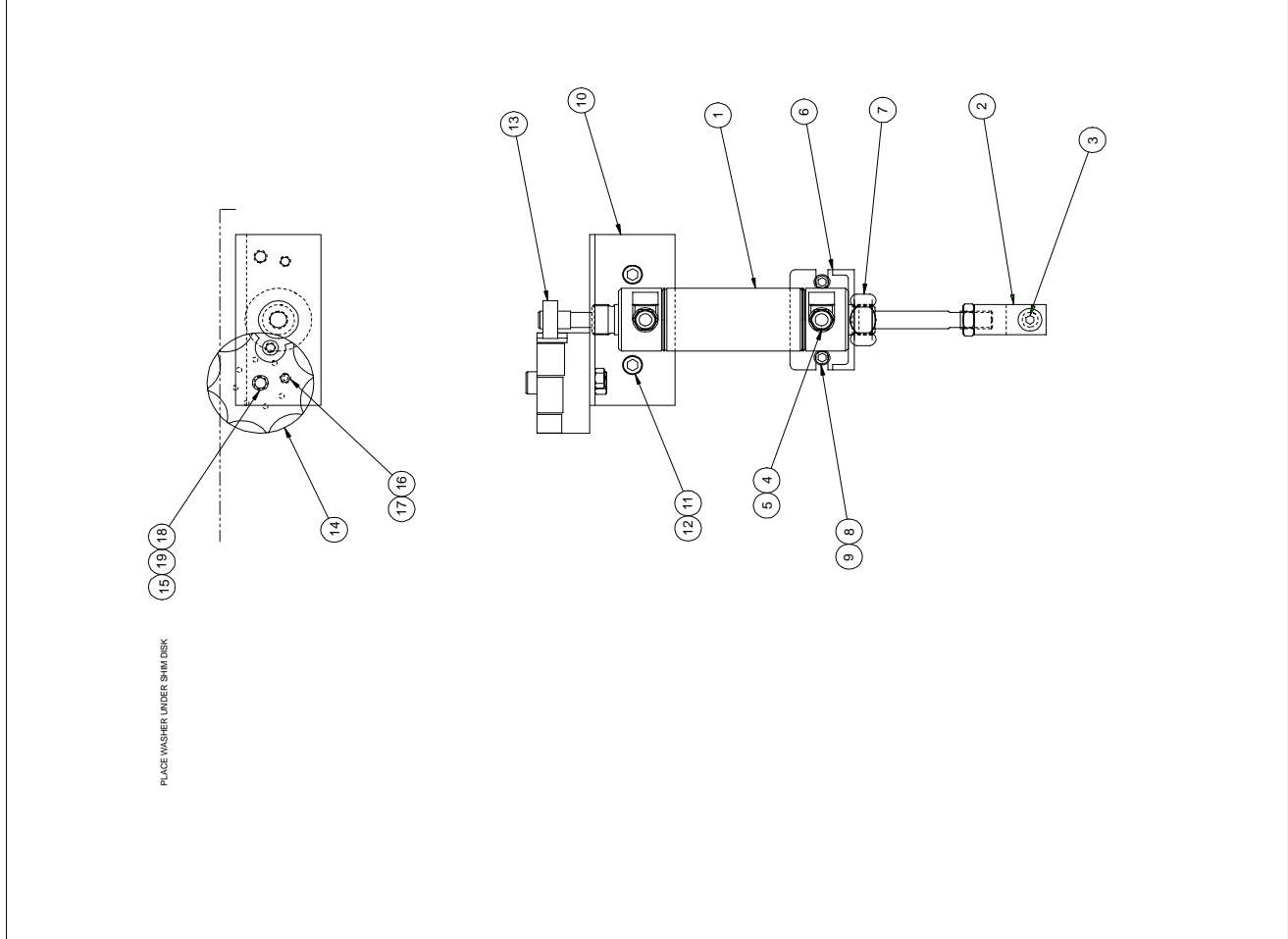


PLACE WASHER UNDER SHIM DISK



2745		0985		0960		0914		0891	
E	1-12-94	D	1-12-94	C	1-12-94	B	1-12-94	A	1-12-94
DRW	1-12-94	CHK	1-12-94	APP	1-12-94	DES	1-12-94	REV	1-12-94
DATE	1-12-94	SCALE	1:1	TITLE	ASSEMBLY, CYLINDER, MAIN R	PROJ	2117 N. Shoups Rd., Madison, Wisconsin	COMP	Pro-Tech Engineering
DATE	1-12-94	SCALE	1:1	TITLE	ASSEMBLY, CYLINDER, MAIN R	PROJ	2117 N. Shoups Rd., Madison, Wisconsin	COMP	Pro-Tech Engineering
DATE	1-12-94	SCALE	1:1	TITLE	ASSEMBLY, CYLINDER, MAIN R	PROJ	2117 N. Shoups Rd., Madison, Wisconsin	COMP	Pro-Tech Engineering

REQD	DESCRIPTION	PART NO.	ITEM
1	CYLINDER, 1.5 X 2	320-190	1
1	CLEVIS, CYLINDER, 7/16-20	325-001	2
1	SCREW, SHOULDER, 3/8 X 1.5/16-18	-	3
2	CONTROL FLOW, 1/8NPT	330-120	4
2	FITTING, STRAIGHT, 1/8 X 1/4	330-590	5
1	BRACKET MOUNTING, CYLINDER	325-110	6
1	NUT, HEX, 3/4-16	-	7
2	SHCS, 1/4-20 X .5	-	8
2	WASHER, LOCK, 1/4	-	9
1	BRACKET MOUNTING, SHIM, CYLINDER	510-132	10
2	SHCS, 5/16-18 X .62	-	11
2	WASHER, LOCK, 5/16	-	12
1	COLLAR, LOCK, 7/16	290-220	13
1	ASSEMBLY, SHIM DISK, PULL, RIGHT	001-252	14
1	WASHER, THRUST, .312 X .06	032-360	15
1	PLUNGER, SPRING, 1/4-20	098-120	16
1	NUT, HEX, JAM	-	17
1	BOLT, SHOULDER, 3/8, 1.0, 5/16-18	-	18
1	NUT, HEX, 5/16-18	-	19



This part is the property of PRO-TECH, Inc. and must be returned to the manufacturer.

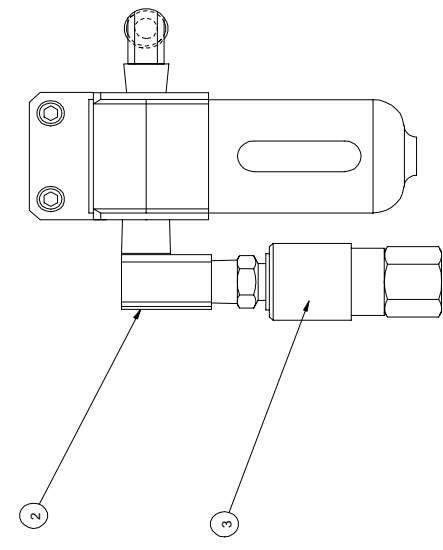
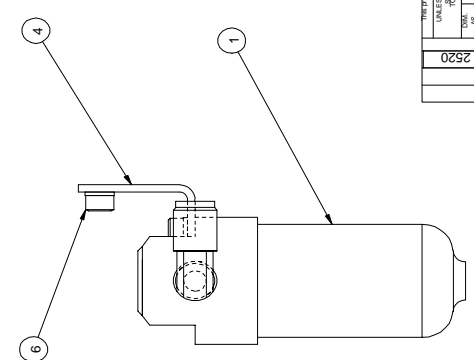
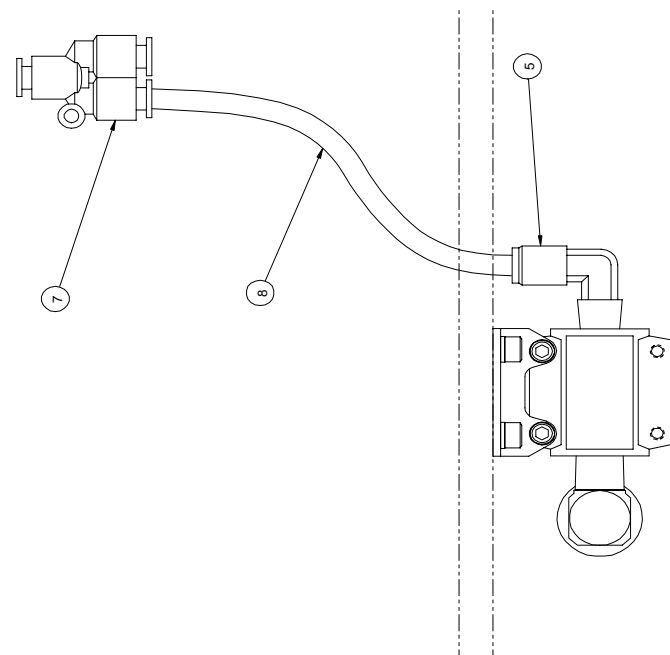
DATE	REV	PAGES	REV	REV
0916	1	0916	1	1
1045	2	1045	2	2
1090	3	1090	3	3
2745	4	2745	4	4

Pro-Tech Engineering
2715 Douglas Rd., Houston, Texas 77058
Tel: 281-486-2800 Fax: 281-486-2801

ASSY, CYLINDER, PULL ROLL, RIGHT

DATE	DATE SCALE	REV
11-29-94	C2	001
11-29-94	C2	207

REQ'D	DESCRIPTION	PART NO.	ITEM
1	FILTER,NAF-2000-N02-C	340-250	1
1	FITTING,AIR,ELBOW,1/4NPT	330-760	2
1	COUPLE,KWIK 711	330-260	3
1	BRKT.,FILTER,B-240	100-220	4
1	FITTING, AIR, ELBOW, MALE 1/4 NPT	330-730	5
2	SHCS,10-32 x .5	-	6
1	AIR,FITTING,UNION-Y	330-305	7
13'	TUBING, PNEUMATIC, FLAME-RETARDENT	360-001	8



UNLESS OTHERWISE SPECIFIED:

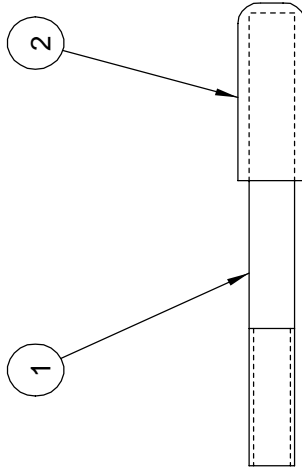
FINISH	TOL.	FMS	DATE
AS-BUILT	AS-BUILT	AS-BUILT	AS-BUILT

DATE: 2520

ASSEMBLY, FILTER, AIR

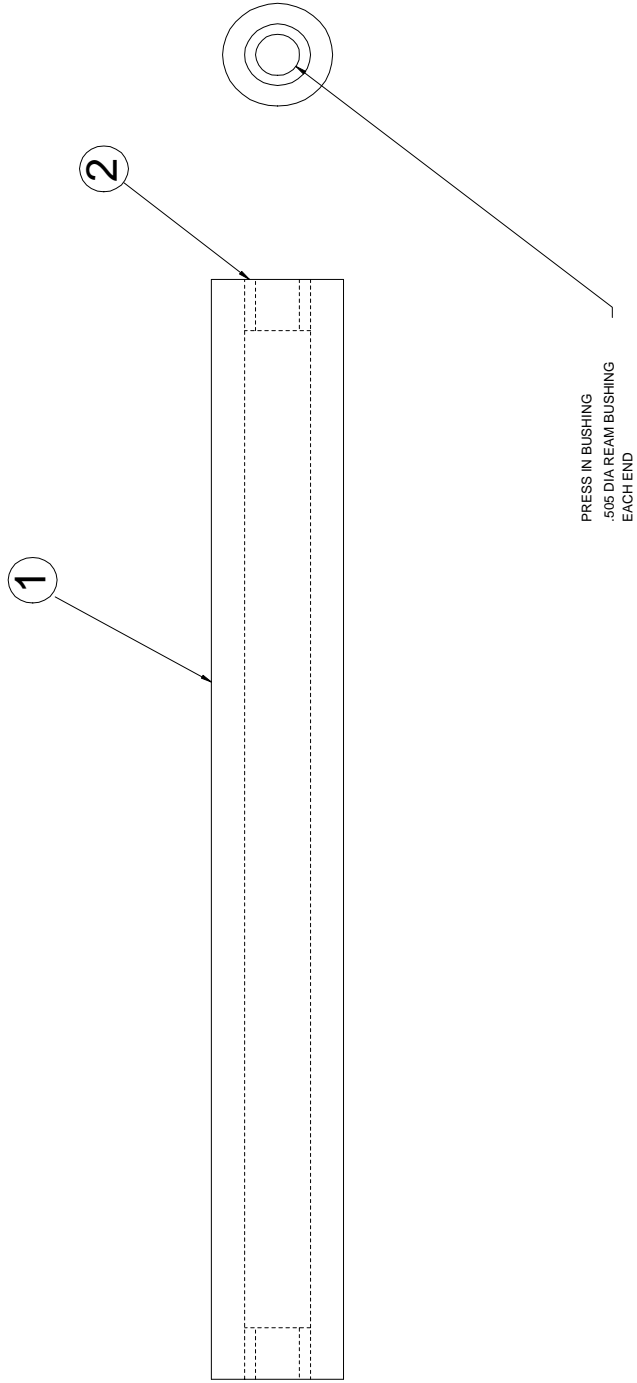
001-210

REQ'D	DESCRIPTION	PART NO.	ITEM
1	HEXHEAD BOLT, MOD, 1/4-20 X 2.5	505-001	1
1	CAP,VINYL	465-014	2



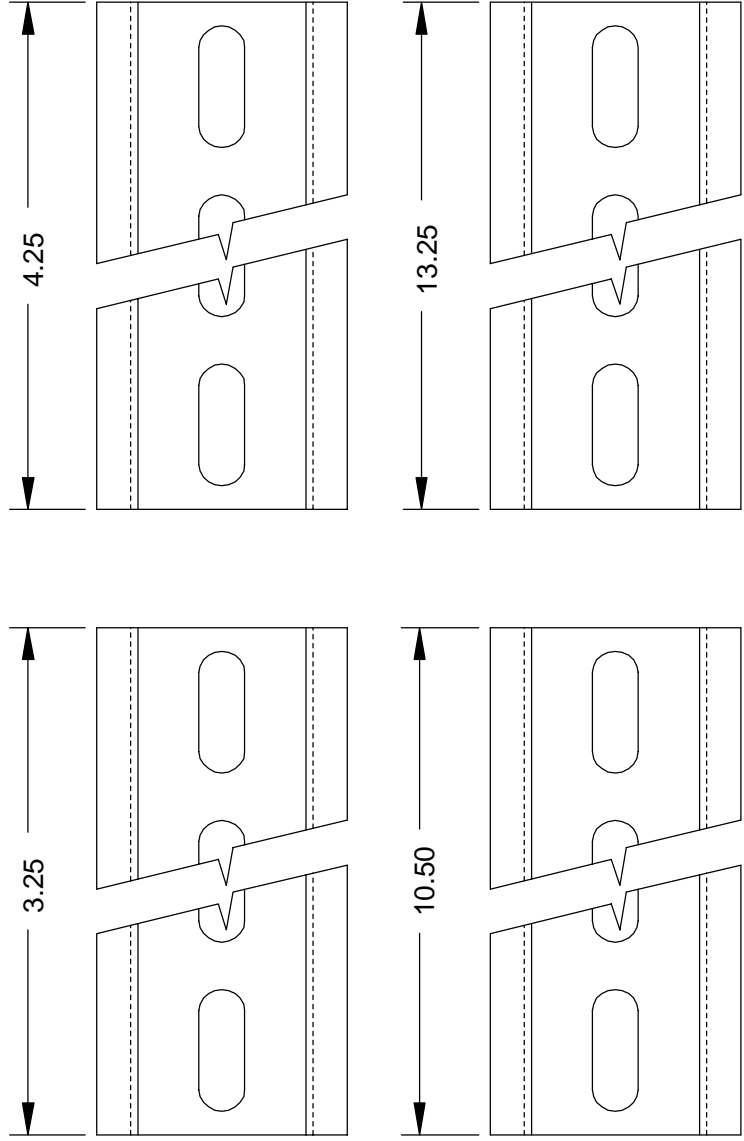
This print is the property of PRO-TECH ENGR. The information herein is reprinted in confidence.		Pro-Tech Engineering 2117 N. Stoughton Rd. Madison, Wisconsin 53704 Phone (608) 246-8844 Fax (608) 246-8845	
UNLESS OTHERWISE SPECIFIED		TITLE: ASSEMBLY,HANDLE,CAM ORCA I	
DIM. AS SHOWN	TOL	FINISH TO BE	DATE: 12-19-94
XX	P .1/64	125	DWG SCALE: A1
X	P .050		DRAWN BY: RAS
X.X	P .020		Dwg: 001-217
X.XX	P .010	ANGLES P 1 D	
X.XXX	P .005		
REVISION			

REQ'D	DESCRIPTION	PART NO.	ITEM
1	IDLER, INFEED, PAPER	620-013	1
2	BUSHING, BRONZ, .5 X .75 X .625	040-026	2



PRO-Tech Engineering 21174, Boulevard des Montagnes, Mirabel (Quebec) J4V 1V5 CANADA TEL: 514-381-1111 FAX: 514-381-1112	
TITLE: ASSEMBLY IDLER, INFEED PAPER ORCA 1	DATE: 12-15-94 DRAWN BY: RAS CHECKED BY: CI DESIGNED BY:
REVISION:	PART NO: 040-026 QTY: 2 UNIT: P/B X: 1 Y: 1 Z: 1 A: 1 B: 1 C: 1 D: 1 E: 1 F: 1 G: 1 H: 1 I: 1 J: 1 K: 1 L: 1 M: 1 N: 1 O: 1 P: 1 Q: 1 R: 1 S: 1 T: 1 U: 1 V: 1 W: 1 X: 1 Y: 1 Z: 1 AA: 1 AB: 1 AC: 1 AD: 1 AE: 1 AF: 1 AG: 1 AH: 1 AI: 1 AJ: 1 AK: 1 AL: 1 AM: 1 AN: 1 AO: 1 AP: 1 AQ: 1 AR: 1 AS: 1 AT: 1 AU: 1 AV: 1 AW: 1 AX: 1 AY: 1 AZ: 1 BA: 1 BB: 1 BC: 1 BD: 1 BE: 1 BF: 1 BG: 1 BH: 1 BI: 1 BJ: 1 BK: 1 BL: 1 BM: 1 BN: 1 BO: 1 BP: 1 BQ: 1 BR: 1 BS: 1 BT: 1 BU: 1 BV: 1 BV: 1 BW: 1 BX: 1 BY: 1 BZ: 1 CA: 1 CB: 1 CC: 1 CD: 1 CE: 1 CF: 1 CG: 1 CH: 1 CI: 1 CJ: 1 CK: 1 CL: 1 CM: 1 CN: 1 CO: 1 CP: 1 CQ: 1 CR: 1 CS: 1 CT: 1 CU: 1 CV: 1 CW: 1 CX: 1 CY: 1 CZ: 1 DA: 1 DB: 1 DC: 1 DD: 1 DE: 1 DF: 1 DG: 1 DH: 1 DI: 1 DJ: 1 DK: 1 DL: 1 DM: 1 DN: 1 DO: 1 DP: 1 DQ: 1 DR: 1 DS: 1 DT: 1 DU: 1 DV: 1 DV: 1 DW: 1 DX: 1 DY: 1 DZ: 1 EA: 1 EB: 1 EC: 1 ED: 1 EE: 1 EF: 1 EG: 1 EH: 1 EI: 1 EJ: 1 EK: 1 EL: 1 EM: 1 EN: 1 EO: 1 EP: 1 EQ: 1 ER: 1 ES: 1 ET: 1 EU: 1 EV: 1 EV: 1 EW: 1 EX: 1 EY: 1 EZ: 1 FA: 1 FB: 1 FC: 1 FD: 1 FE: 1 FF: 1 FG: 1 FH: 1 FI: 1 FJ: 1 FK: 1 FL: 1 FM: 1 FN: 1 FO: 1 FP: 1 FQ: 1 FR: 1 FS: 1 FT: 1 FU: 1 FV: 1 FV: 1 FW: 1 FX: 1 FY: 1 FZ: 1 GA: 1 GB: 1 GC: 1 GD: 1 GE: 1 GF: 1 GG: 1 GH: 1 GI: 1 GJ: 1 GK: 1 GL: 1 GM: 1 GN: 1 GO: 1 GP: 1 GQ: 1 GR: 1 GS: 1 GT: 1 GU: 1 GV: 1 GV: 1 GW: 1 GX: 1 GY: 1 GZ: 1 HA: 1 HB: 1 HC: 1 HD: 1 HE: 1 HF: 1 HG: 1 HH: 1 HI: 1 HJ: 1 HK: 1 HL: 1 HM: 1 HN: 1 HO: 1 HP: 1 HQ: 1 HR: 1 HS: 1 HT: 1 HU: 1 HV: 1 HV: 1 HW: 1 HX: 1 HY: 1 HZ: 1 IA: 1 IB: 1 IC: 1 ID: 1 IE: 1 IF: 1 IG: 1 IH: 1 II: 1 IJ: 1 IK: 1 IL: 1 IM: 1 IN: 1 IO: 1 IP: 1 IQ: 1 IR: 1 IS: 1 IT: 1 IU: 1 IV: 1 IV: 1 IW: 1 IX: 1 IY: 1 IZ: 1 JA: 1 JB: 1 JC: 1 JD: 1 JE: 1 JF: 1 JG: 1 JH: 1 JI: 1 JJ: 1 JK: 1 JL: 1 JM: 1 JN: 1 JO: 1 JP: 1 JQ: 1 JR: 1 JS: 1 JT: 1 JU: 1 JV: 1 JV: 1 JW: 1 JX: 1 JY: 1 JZ: 1 KA: 1 KB: 1 KC: 1 KD: 1 KE: 1 KF: 1 KG: 1 KH: 1 KI: 1 KJ: 1 KK: 1 KL: 1 KM: 1 KN: 1 KO: 1 KP: 1 KQ: 1 KR: 1 KS: 1 KT: 1 KU: 1 KV: 1 KV: 1 KW: 1 KX: 1 KY: 1 KZ: 1 LA: 1 LB: 1 LC: 1 LD: 1 LE: 1 LF: 1 LG: 1 LH: 1 LI: 1 LJ: 1 LK: 1 LL: 1 LM: 1 LN: 1 LO: 1 LP: 1 LQ: 1 LR: 1 LS: 1 LT: 1 LU: 1 LV: 1 LV: 1 LW: 1 LX: 1 LY: 1 LZ: 1 MA: 1 MB: 1 MC: 1 MD: 1 ME: 1 MF: 1 MG: 1 MH: 1 MI: 1 MJ: 1 MK: 1 ML: 1 MM: 1 MN: 1 MO: 1 MP: 1 MQ: 1 MR: 1 MS: 1 MT: 1 MU: 1 MV: 1 MV: 1 MW: 1 MX: 1 MY: 1 MZ: 1 NA: 1 NB: 1 NC: 1 ND: 1 NE: 1 NF: 1 NG: 1 NH: 1 NI: 1 NJ: 1 NK: 1 NL: 1 NM: 1 NN: 1 NO: 1 NP: 1 NQ: 1 NR: 1 NS: 1 NT: 1 NU: 1 NV: 1 NV: 1 NW: 1 NX: 1 NY: 1 NZ: 1 OA: 1 OB: 1 OC: 1 OD: 1 OE: 1 OF: 1 OG: 1 OH: 1 OI: 1 OJ: 1 OK: 1 OL: 1 OM: 1 ON: 1 OO: 1 OP: 1 OQ: 1 OR: 1 OS: 1 OT: 1 OU: 1 OV: 1 OV: 1 OW: 1 OX: 1 OY: 1 OZ: 1 PA: 1 PB: 1 PC: 1 PD: 1 PE: 1 PF: 1 PG: 1 PH: 1 PI: 1 PJ: 1 PK: 1 PL: 1 PM: 1 PN: 1 PO: 1 PP: 1 PQ: 1 PR: 1 PS: 1 PT: 1 PU: 1 PV: 1 PV: 1 PW: 1 PX: 1 PY: 1 PZ: 1 QA: 1 QB: 1 QC: 1 QD: 1 QE: 1 QF: 1 QG: 1 QH: 1 QI: 1 QJ: 1 QK: 1 QL: 1 QM: 1 QN: 1 QO: 1 QP: 1 QQ: 1 QR: 1 QS: 1 QT: 1 QU: 1 QV: 1 QV: 1 QW: 1 QX: 1 QY: 1 QZ: 1 RA: 1 RB: 1 RC: 1 RD: 1 RE: 1 RF: 1 RG: 1 RH: 1 RI: 1 RJ: 1 RK: 1 RL: 1 RM: 1 RN: 1 RO: 1 RP: 1 RQ: 1 RR: 1 RS: 1 RT: 1 RU: 1 RV: 1 RV: 1 RW: 1 RX: 1 RY: 1 RZ: 1 SA: 1 SB: 1 SC: 1 SD: 1 SE: 1 SF: 1 SG: 1 SH: 1 SI: 1 SJ: 1 SK: 1 SL: 1 SM: 1 SN: 1 SO: 1 SP: 1 SQ: 1 SR: 1 SS: 1 ST: 1 SU: 1 SV: 1 SV: 1 SW: 1 SX: 1 SY: 1 SZ: 1 TA: 1 TB: 1 TC: 1 TD: 1 TE: 1 TF: 1 TG: 1 TH: 1 TI: 1 TJ: 1 TK: 1 TL: 1 TM: 1 TN: 1 TO: 1 TP: 1 TQ: 1 TR: 1 TS: 1 TU: 1 TV: 1 TV: 1 TW: 1 TX: 1 TY: 1 TZ: 1 UA: 1 UB: 1 UC: 1 UD: 1 UE: 1 UF: 1 UG: 1 UH: 1 UI: 1 UJ: 1 UK: 1 UL: 1 UM: 1 UN: 1 UO: 1 UP: 1 UQ: 1 UR: 1 US: 1 UT: 1 UU: 1 UV: 1 UV: 1 UW: 1 UX: 1 UY: 1 UZ: 1 VA: 1 VB: 1 VC: 1 VD: 1 VE: 1 VF: 1 VG: 1 VH: 1 VI: 1 VJ: 1 VK: 1 VL: 1 VM: 1 VN: 1 VO: 1 VP: 1 VQ: 1 VR: 1 VS: 1 VT: 1 VU: 1 VV: 1 VV: 1 VW: 1 VX: 1 VY: 1 VZ: 1 WA: 1 WB: 1 WC: 1 WD: 1 WE: 1 WF: 1 WG: 1 WH: 1 WI: 1 WJ: 1 WK: 1 WL: 1 WM: 1 WN: 1 WO: 1 WP: 1 WQ: 1 WR: 1 WS: 1 WT: 1 WU: 1 WV: 1 WV: 1 WW: 1 WX: 1 WY: 1 WZ: 1 XA: 1 XB: 1 XC: 1 XD: 1 XE: 1 XF: 1 XG: 1 XH: 1 XI: 1 XJ: 1 XK: 1 XL: 1 XM: 1 XN: 1 XO: 1 XP: 1 XQ: 1 XR: 1 XS: 1 XT: 1 XU: 1 XV: 1 XV: 1 XW: 1 XX: 1 XY: 1 XZ: 1 YA: 1 YB: 1 YC: 1 YD: 1 YE: 1 YF: 1 YG: 1 YH: 1 YI: 1 YJ: 1 YK: 1 YL: 1 YM: 1 YN: 1 YO: 1 YP: 1 YQ: 1 YR: 1 YS: 1 YT: 1 YU: 1 YV: 1 YV: 1 YW: 1 YX: 1 YY: 1 YZ: 1 ZA: 1 ZB: 1 ZC: 1 ZD: 1 ZE: 1 ZF: 1 ZG: 1 ZH: 1 ZI: 1 ZJ: 1 ZK: 1 ZL: 1 ZM: 1 ZN: 1 ZO: 1 ZP: 1 ZQ: 1 ZR: 1 ZS: 1 ZT: 1 ZU: 1 ZV: 1 ZV: 1 ZW: 1 ZX: 1 ZY: 1 ZZ: 1

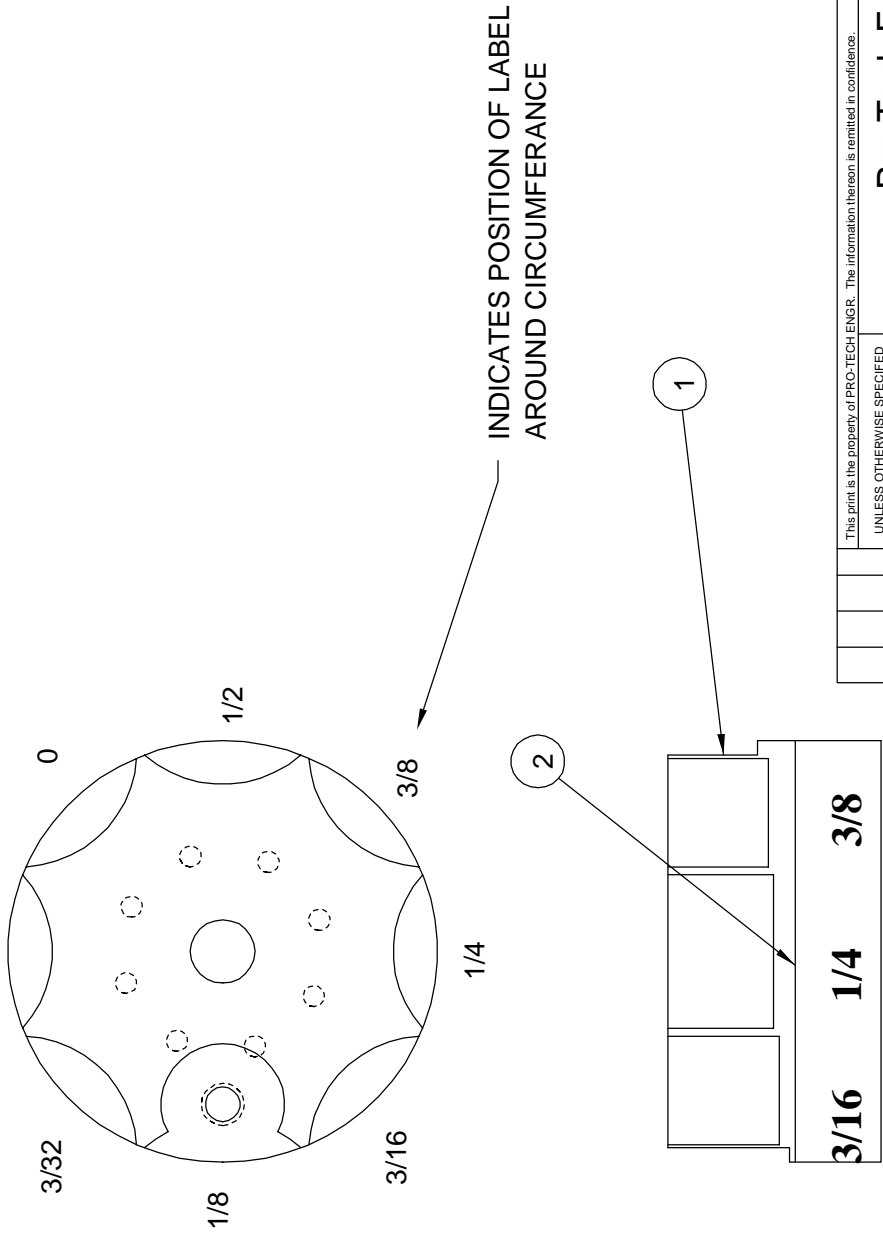
PROPRIETARY GBC PRO-TECH CLAIMS PROPRIETARY RIGHTS TO THE MATERIALS AND METHODS DESCRIBED HEREIN. THIS INFORMATION IS FOR ENGINEERING INFORMATION ONLY AND SHALL NOT BE REPRODUCED, COPIED OR DISCLOSED IN WHOLE OR IN PART, OR USED FOR MANUFACTURE OF ANY PART WITHOUT WRITTEN PERMISSION FROM GBC PRO-TECH.	REQ'D	DESCRIPTION	PART NO.	ITEM
	-	DIN RAIL	217-200	-



TITLE:
**SET, DIN RAIL
 ORCA I**

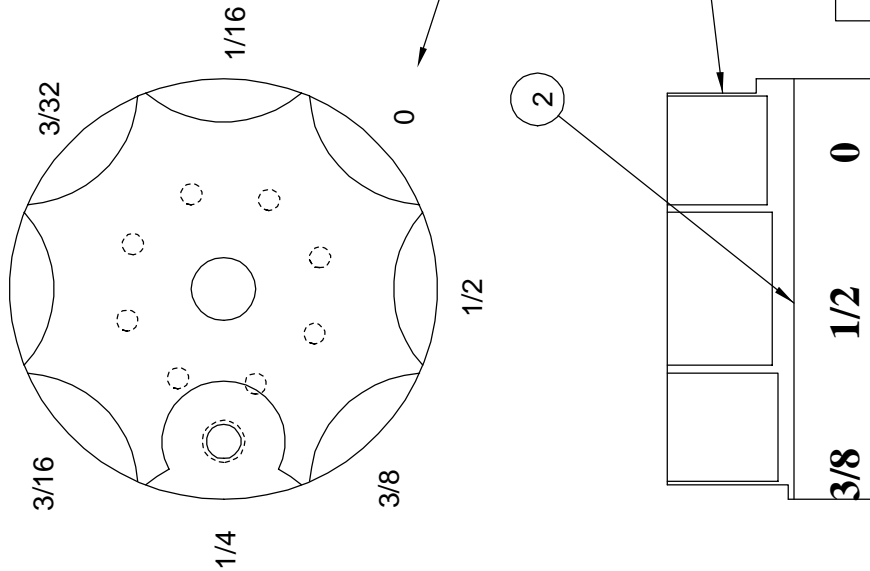
SHEET 1 OF 1		UNLESS OTHERWISE SPECIFIED TOLERANCE		FINISH TO BE		DATE: 7-19-96		SCALE: 1/1		SIZE: A		DRAWN BY: RLM		Dwg: 001-233	
DIM AS SHOWN	TOL.	FINISH TO BE		ANGLES P ID		RELEASE NO.									
X/X	P .164	125°		P .010											
X.	P .050			P .005											
X.X	P .020														
X-XX	P .010														
X-XXX	P .005														

REQ'D	DESCRIPTION	PART NO.	ITEM
1	SHIM DISK	720-019	1
1	OVERLAY, SHIM DISK, MAIN ROLL	450-021	2



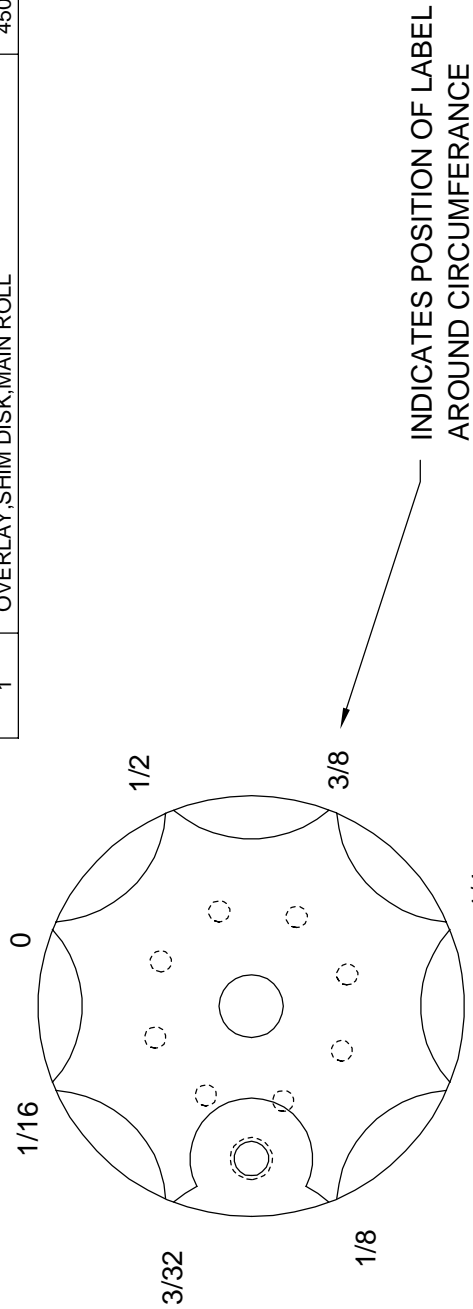
This print is the property of PRO-TECH ENGR. The information thereon is reprinted in confidence. UNLESS OTHERWISE SPECIFIED TOLERANCE		Pro-Tech Engineering 2117 N. Sloughen Rd. Madison, Wisconsin 53704 Phone (608) 246-8844 Fax (608) 246-8846	
DIM. AS SHOWN	TOL.	FINISH TO BE	TITLE: ASSEMBLY, SHIM DISK, MAIN LEFT ORCA I
XX	P .164	125√	
X	P .050	X.X	DATE: 3-01-95
X.X	P .020	X.XXX	DRAWN BY: RAS
X.XX	P .010	X.XXX	DWG SCALE: A1
X.XXX	P .005		Dwg: 001-249

REQ'D	DESCRIPTION	PART NO.	ITEM
1	SHIM DISK	720-019	1
1	OVERLAY, SHIM DISK, MAIN ROLL	450-021	2

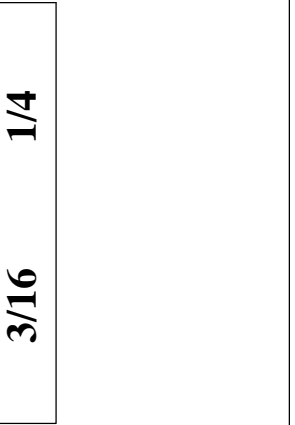


This print is the property of PRO-TECH ENGR. The information thereon is reprinted in confidence.	
Pro-Tech Engineering 2117 N. Stoughton Rd. Madison, Wisconsin 53704 Phone (608) 246-8844 Fax (608) 246-8845	
TITLE: ASSEMBLY, SHIM DISK, MAIN ROLL ORCA I	
DATE: 3-01-95	DWG SCALE: A1
DRAWN BY: RAS	Dwg: 001-250
UNLESS OTHERWISE SPECIFIED TOLERANCE	
DIM. AS SHOWN	FINISH TO BE
X.X P .1/64	125
X. P .050	
X.X P .020	
X.XX P .010	ANGLES
X.XXX P .005	P-ID
REVISION	

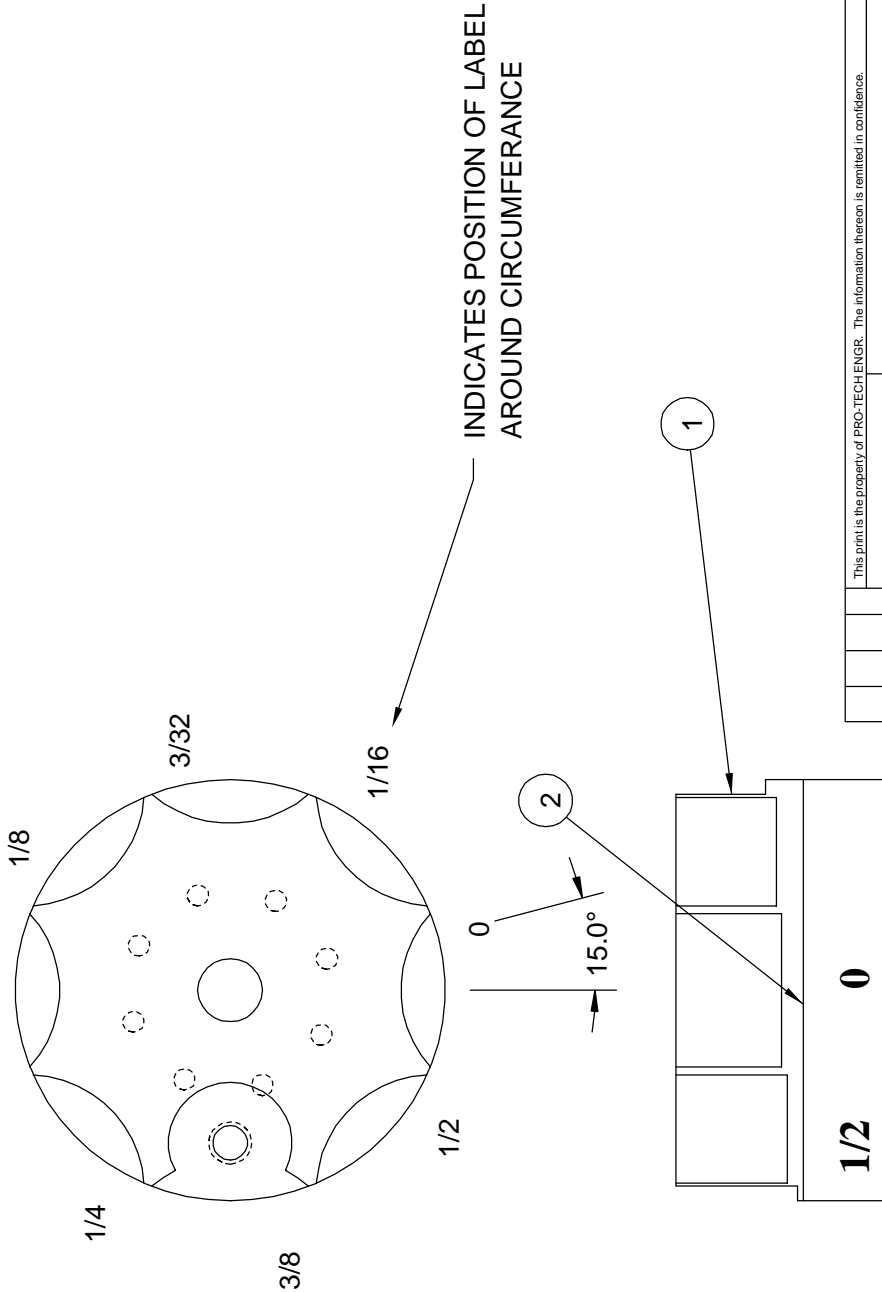
REQ'D	DESCRIPTION	PART NO.	ITEM
1	SHIM DISK	720-019	1
1	OVERLAY, SHIM DISK, MAIN ROLL	450-021	2



This print is the property of PRO-TECH ENGR. The information hereon is emitted in confidence. UNLESS OTHERWISE SPECIFIED TOLERANCE		Pro-Tech Engineering 2117 N. Stoughton Rd. Madison, Wisconsin 53704 Phone (608) 246-8644 Fax (608) 246-8645	
DIM. AS SHOWN	TOL.	FINISH TO BE	TITLE:
X.X	P .1/64	125	ASSEMBLY, SHIM DISK, PULL, LEFT
X.	P .050		ORCA I
X.X	P .020		DATE: 3-01-95
X.XX	P .010	ANGLES P 1 D	DRAWN BY: RAS
X.XXX	P .005		DWG SCALE: A1
			Dwg: 001-251

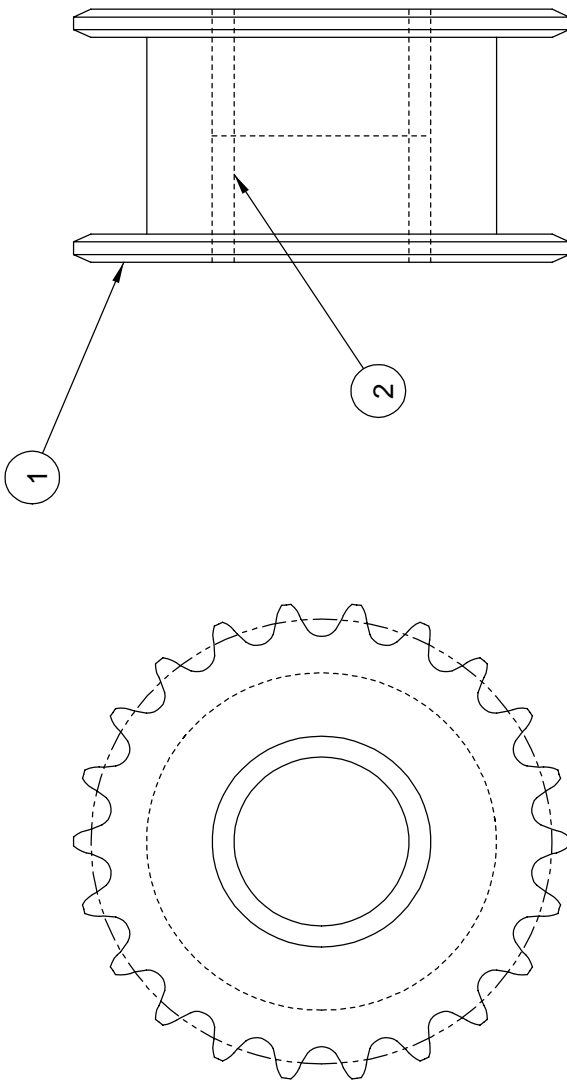


REQ'D	DESCRIPTION	PART NO.	ITEM
1	SHIM DISK	720-019	1
1	OVERLAY, SHIM DISK, MAIN ROLL	450-021	2



This print is the property of PRO-TECH ENGR. The information thereon is reprinted in confidence. UNLESS OTHERWISE SPECIFIED TOLERANCE		Pro-Tech Engineering 2117 N. Stoughton Rd., Madison, Wisconsin, 53704 Phone (608) 246-8844 Fax (608) 246-8845	
DIM. AS SHOWN	TOL	FINISH TO BE	TITLE:
X.X	P .164	125√	ASSEMBLY, SHIM DISK, PULL, RIGHT
X.	P .060		ORCA I
X.X	P .020		DATE: 3-01-95
X.XX	P .010	ANGLES P 1D	DRAWN BY: RAS
X.XXX	P .005		DWG SCALE: A1
			Dwg: 001-252

REQ'D	DESCRIPTION	PART NO.	ITEM
1	SPROCKET,DRIVE,MODIFIED	750-000	1
2	BEARING,NEEDLE	028-002	2



This print is the property of PRO-TECH ENGR. The information hereon is furnished in confidence.		Pro-Tech Engineering 2117 N. Staughton Rd. Madison, Wisconsin 53704 Phone (608) 246-8944 Fax (608) 246-8645		TITLE: ASSEMBLY, SPROCKET, DRIVE	
UNLESS OTHERWISE SPECIFIED		DIM. AS SHOWN	TOL.	FINISH TO BE	DATE:
X/X	P. 1/64			125°	4-13-95
X.	P. .050				DRAWN BY: RAS
X.X	P. .020				DWG. SCALE: A1
X.XX	P. .010				Dwg: 001-289
X.XXX	P. .005				
REVISION					

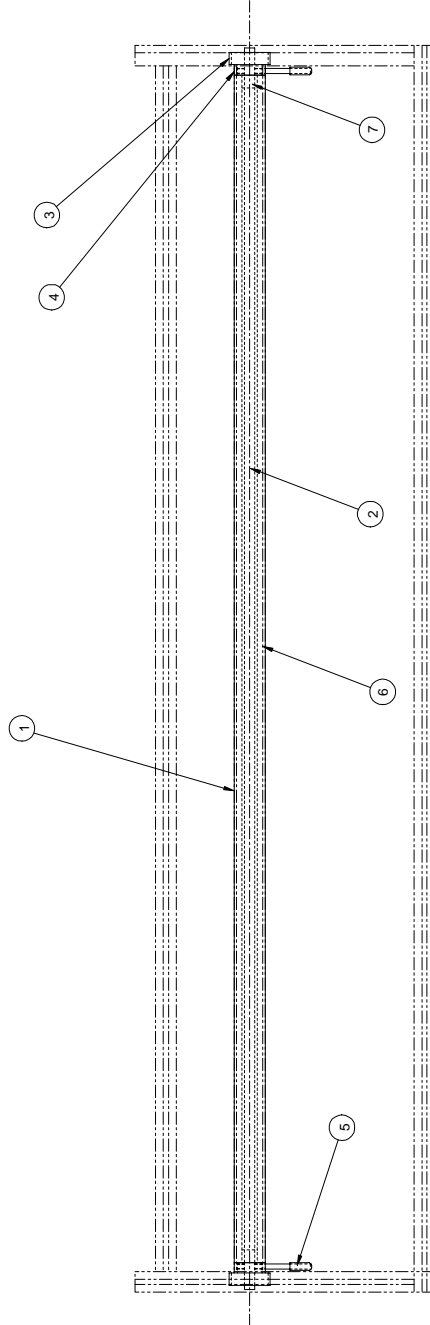
REQD	DESCRIPTION	PART NO.	ITEM
1	SHT, IDL., 5/SOI	440-110	1
1	SPRKT, 35, 13T, 5/32BS13F	440-125	2
1	IDLER BASE	440-002	3
2	HEX HEAD BOLT, 1/4-20 X .875	-	4
1	WASHER, FLAT, 1/4	-	5
1	HEX HEAD BOLT, 5/16-18 X .875	-	6
1	SAE WASHER, FLAT, 1/2 OD X 1/4 ID	-	7
1	SET SCREW 10-32 X .25	-	8
1	SET SCREW 1/4-20 X .25	-	9

PROPRIETARY

GBC PRO-TECH CLAIMS PROPRIETARY RIGHTS TO THE MATERIALS AND INFORMATION CONTAINED HEREIN. ANY REPRODUCTION, COPIED OR DISCLOSED IN WHOLE OR IN PART, OR USED FOR MANUFACTURE OR FOR ANY OTHER PURPOSE WITHOUT WRITTEN PERMISSION FROM GBC PRO-TECH

SHEET 1 OF 1		UNLESS OTHERWISE SPECIFIED	
DIM AS SHOWN	TOL.	FINISH TO BE	ANGLES
XX	P .164	125	P .010
X	P .050		P .005
XX	P .020		
XXX			
DATE: 4-17-95	SCALE: 1/1	DRAWN BY: RAS	SIZE: 1/1
RELEASE NO.			
TITLE: ASSEMBLY, TENSIONER, CHAIN ORCA 1		DRAWN BY: RAS	
GBC PRO-TECH		4151 Anderson Road, Dufur, Oregon 97322	
Phone (503) 262-9244 Fax (503) 262-9242		001-290	

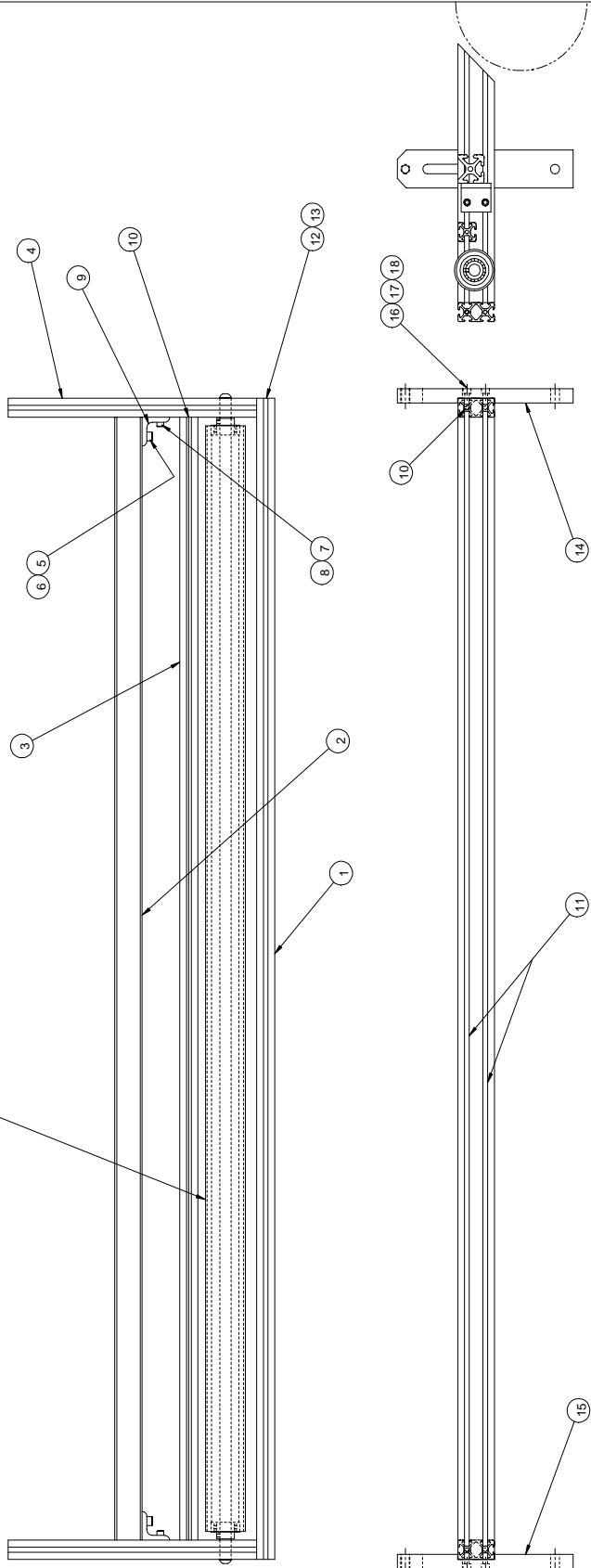
REQ'D	DESCRIPTION	PART NO.	ITEM
1	ASSEMBLY, IDLER, INFEED, PAPER	001-218	1
1	SHAFT, IDLER, INFEED, PAPER	710-054	2
2	CAM, LIFTING, IDLER	525-005	3
2	SET SCREW, 1/4-20 X .375	-	4
2	ASSEMBLY, HANDLE, CAM	001-217	5
1	IDLER, INFEED, PAPER	620 - 013	6
2	BUSHING, BRONZE, .5 X .75 X .625	040 - 026	7



SHEET 1 OF 1		UNLESS OTHERWISE SPECIFIED		FINISH TO BE	
2651	2651	TOL.	P. I.	1/4"	1/4"
		X	X	X	X
		XX	XX	XX	XX
		XXX	XXX	XXX	XXX
		ANGLES	P. I.	1/4"	1/4"
		DATE: 5-8-95	ORCA 1	SCALE	1/4" = 1"
		DRAWN BY: RAS	SCALE	SIZE	C
		Dwg:			001294

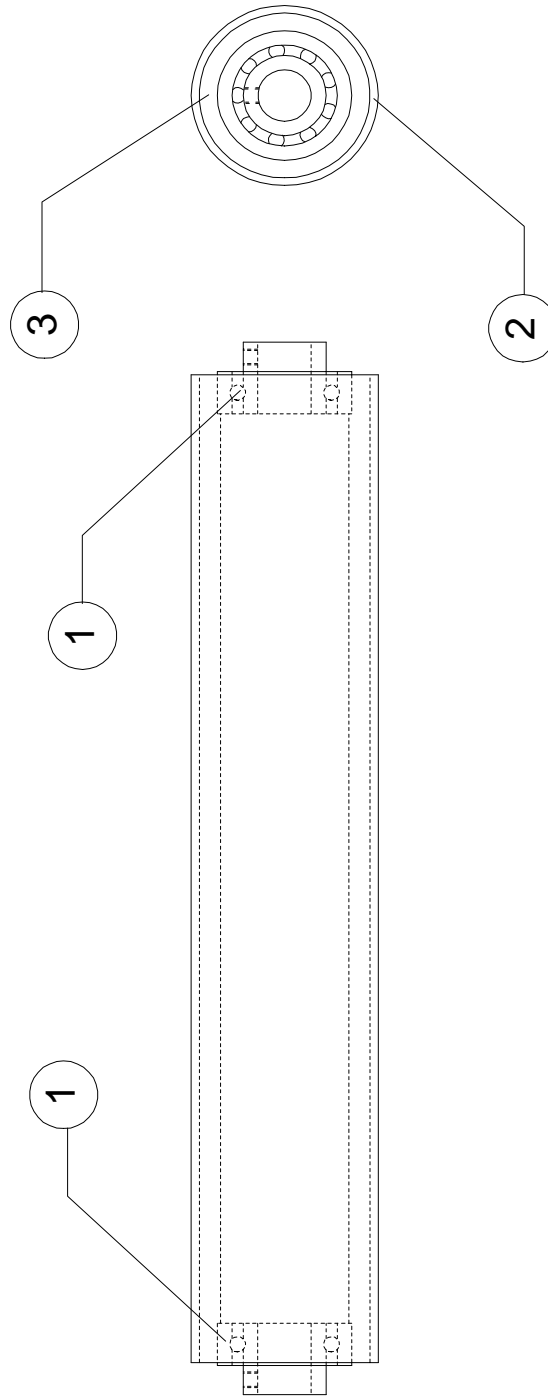
GBC Pro PRO, TECH
 4101 Appleton Road, DeForest, Wisconsin
 Phone (800) 246-6848 Fax (800) 246-6849

REQD.	DESCRIPTION	PART NO.	ITEM
1	EXTRUSION,MOD	110-017	1
1	EXTRUSION,MOD	110-019	2
1	EXTRUSION,MOD	110-018	3
2	EXTRUSION,MOD	110-024	4
2	SHCS, 5/16" X 5/8	-	5
2	5/16-18 ECONOMY T-NUT	050-003	6
4	SHCS, 1/4"-20 X 1/2	-	7
4	1/4"-20 ECONOMY T-NUT	050-001	8
2	BRACKET,MOUNTING,EXTRUSION	510-128	9
6	END FASTENER, 1/4"-20	100-018	10
2	COVER T-SLOT	465-013	11
2	END CAP	465-012	12
4	FASTENER,PUSH-IN	300-020	13
1	BRACKET,PIVOT,TABLE,RIGHT	510-140	14
1	BRACKET,PIVOT,TABLE,LEFT	510-145	15
8	SHCS, 1/4"-20 X 5	-	16
8	T-NUT, 1/4"-20	050-001	17
2	1/4 DIA X 5/8 DOWEL PIN	095-191	18
1	SLITTER IDLER	001-298	19



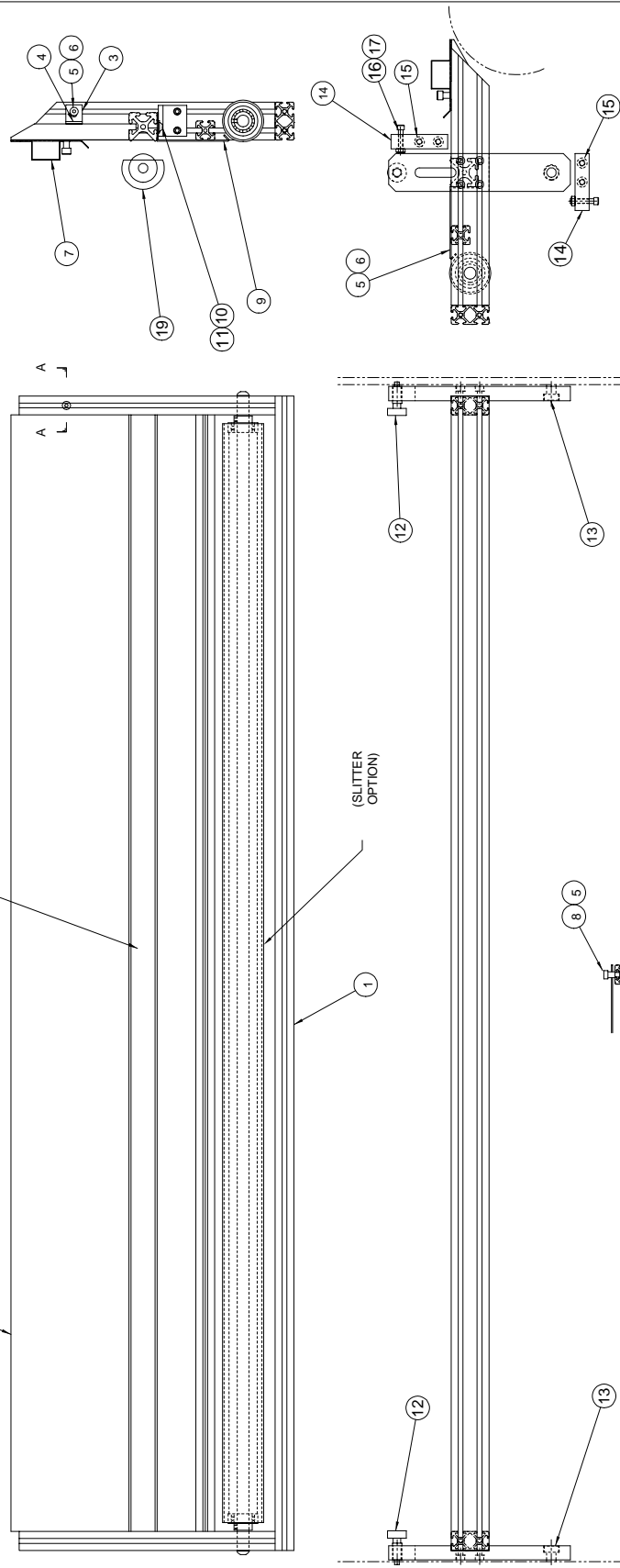
1102		2696	
DATE	ISSUE	DATE	ISSUE
11/02	1	11/02	1
PRO-Tech Engineering 3717 N. 104th Ave., Milwaukee, WI 53222, USA PHONE: 414.224.1000 FAX: 414.224.1001			
TITLE ASSEMBLY, FRAME, TABLE, ORCA I		DRAWN BY RAS	
CHECKED BY C4		DATE 5-8-95	
PROJECT NO. 001-295		SHEET NO. 19	

REQ'D	DESCRIPTION	PART NO.	ITEM
2	BEARING, IDLER	020-100	1
1	TUBE, SLITTER, PVC	490-001	2
1	ROLL, IDLER	620-016	3



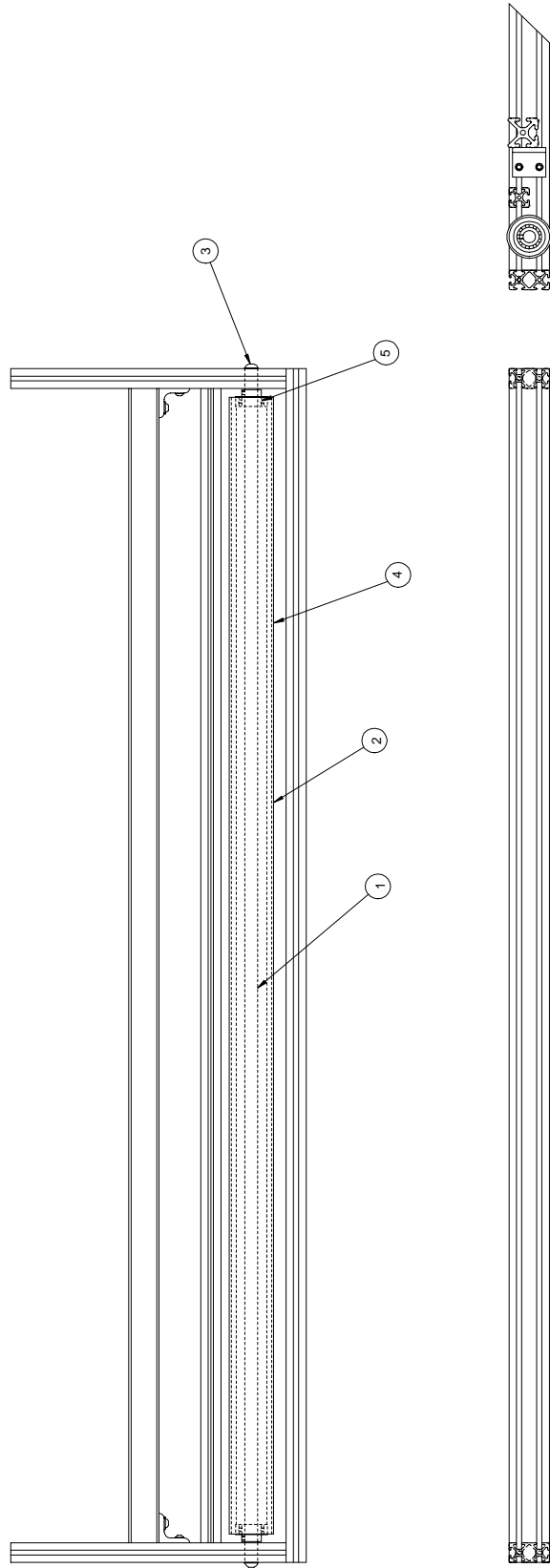
THIS PART IS A TRADE NAME. THE INFORMATION IS SUBJECT TO CHANGE WITHOUT NOTICE.	
DRAWN BY: [] CHECKED BY: [] DATE: []	PRO-Tech Engineering 27110, Sausalito, CA 94965 TEL: (415) 339-1111 FAX: (415) 339-1112
TITLE: ASSEMBLY, IDLER, SLITTER, PAPER ORCA I	DATE: 5-08-95 DRAWN BY: RAS CHECKED BY: C1 PART NO: 001-296
REVISION: [] NO. TO BE: [] P. 1000: [] X: [] S. X: [] S. X: [] S. X: [] S. X: []	SCALE: [] P. 10: [] P. 100: [] P. 1000: []

RECD	DESCRIPTION	PART NO.	ITEM
1	ASSEMBLY FRAME TABLE	001295	1
1	TABLE COMPONENT TOP FRONT	760430	2
1	BRACKET ANGLE	100423	3
2	SCREW WOOD PAN HEAD #12 X 75	-	4
4	TANUT 1/4-20	060401	5
4	BKCS 1/4-20 X 1/4	-	6
1	TABLE COMPONENT PRESSURE PLATE	672416	7
2	SHOULDER BOLT 5/16 X .38 1/4-20	-	8
1	TABLE COMPONENT TOP BACK	760429	9
3	BKCS 5/16-18 X 3/8	-	10
3	TANUT 5/16-18	060403	11
2	COMPRESSION SPRING LC .022 LF	096402	12
2	SHOULDER BOLT 1/2 DIA 3/8 X 1 1/2	-	13
4	BLOCK STOP FOR TABLE	501410	14
8	SHCS 5/16-18 X .605	-	15
4	SHCS 1/4-20 X 1.25	-	16
4	NUT JAN HEX 1/4-20	-	17
1	FELT STRIP BLACK 2-1/4 WIDE	409402	18
1	ASSEMBLY JUDLER INFEED	001294	19



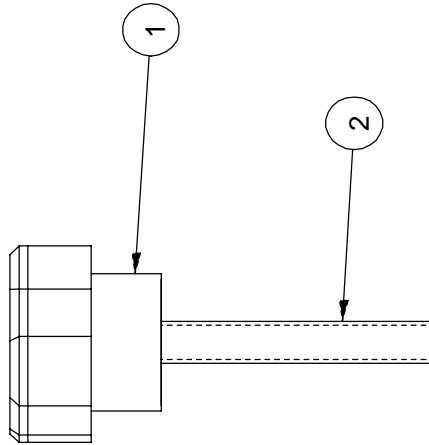
SHEET 1 OF 1		GBC INDUSTRIAL	
STANDARD DRAWING		REVISED	
DATE: 01/19/99		DRAWN BY: S-PMS	
SCALE: 1:1		SIZE: C	
DATE: 01/19/99		RELEASE: P-008	
TITLE: ASSEMBLY TABLE ORCA 1		DRAWN BY: S-PMS	
DATE: 01/19/99		SCALE: 1:1	
DATE: 01/19/99		SIZE: C	
DATE: 01/19/99		Dwg: 001297	

REQ'D	DESCRIPTION	PART NO.	ITEM
1	SHAFT, IDLER, SLITTER, PAPER	710-055	1
1	ASSEMBLY, IDLER, SLITTER, PAPER	001-296	2
2	BHCS, 3/8-16 X .5	-	3
1	SLITTER TUBE	490 - 001	4
2	BEARINGS IDLER	020 - 100	5



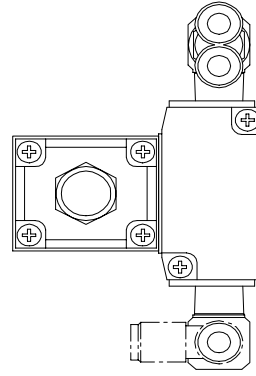
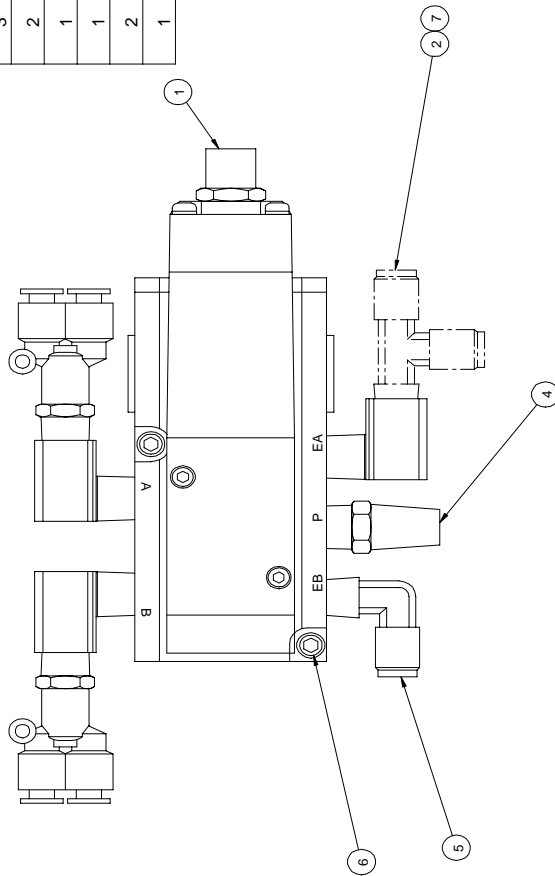
THE DATA ON THIS DRAWING IS THE PROPERTY OF PRO-TECH ENGINEERING. THE INFORMATION IS UNCLASSIFIED.	
PRO-TECH ENGINEERING 2000 W. 10th Street Denver, CO 80202	
TITLE: ASSEMBLY, SLITTER, IDLER ORCA I	DATE: 5-9-95 DRAWN: BAS CHECKED: CA DWG NO: 001-298
REVISION NO. DATE BY 1 11/13/98 JVA	PART NO. 001-296 QTY. 1 UNIT. EA

REQ'D	DESCRIPTION	PART NO.	ITEM
1	NOB,KNURLED	465-007	1
1	SET SCREW,FLATPOINT,1/4-20 X 2.0	050-012	2



1065		K.L. 8-7-95		A	
REVISION					
This print is the property of PRO-TECH ENGR. The information thereon is reprinted in confidence.					
UNLESS OTHERWISE SPECIFIED		TOLERANCE DIM. AS SHOWN X.X X X.X X.XX X.XXX			
TOL.		FINISH TO BE P .1/64 P .050 P .020 P .010 P .005			
ANGLES		P-ID 125°			
DATE:		DRAWN BY:		DWG SCALE:	
7-21-95		RAS		A1	
TITLE:		Pro-Tech Engineering 2117 N. Stoughton Rd. Madison, Wisconsin 53704 Phone (608) 246-8844 Fax (608) 246-8645			
ASSEMBLY, KNOB, 1/4-20		ORCA I			
DATE:		DRAWN BY:		DWG SCALE:	
7-21-95		RAS		A1	
Dwg:		001-314			

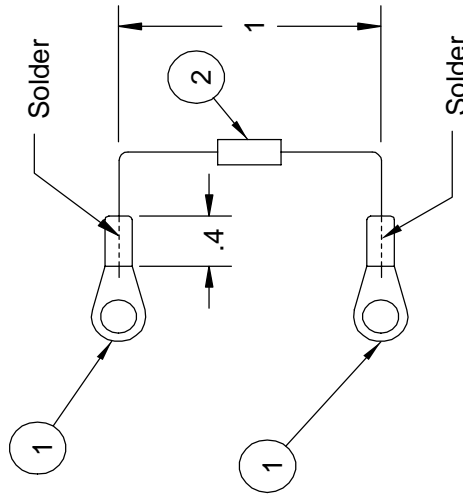
REQD	DESCRIPTION	PART NO.	ITEM
1	VALVE, AIR, SOLENOID	350-115	1
3	FITTING, AIR, ELBOW, 1/4NPT	330-760	2
2	Y-FITTING, 1/4NPT	330-310	3
1	MUFFLER, AIR	330-280	4
1	FITTING, AIR, ELBOW, MALE 1/4 NPT	330-730	5
2	CAP SCREWS, SOCKET, #10-32 X 1-1/4 LG	-	6
1	RUN TEE T4X4	330-720	7



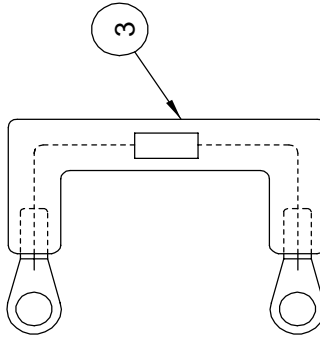
ROTATE FITTINGS AS REQUIRED FOR BEST ASSEMBLY

REVISIONS		DATE		BY	
1	ASSEMBLY	10-20-95	RAS	1	001-329
TITLE: ASSEMBLY, VALVE CONTROL PART NO.: 350-115 REV: 1 DATE: 10-20-95 DESIGNED BY: RAS DRAWN BY: 1 CHECKED BY: 1 APPROVED BY: 1					

REQ'D	DESCRIPTION	PART NO.	ITEM
2	Connector ring	215-006	1
1	TVS 1.5KE400CA	185-004	2
1.25"	HEAT SHRINK TUBING, 1/4" X 250'	180-430	3



Apply a heat shrink tube after soldering

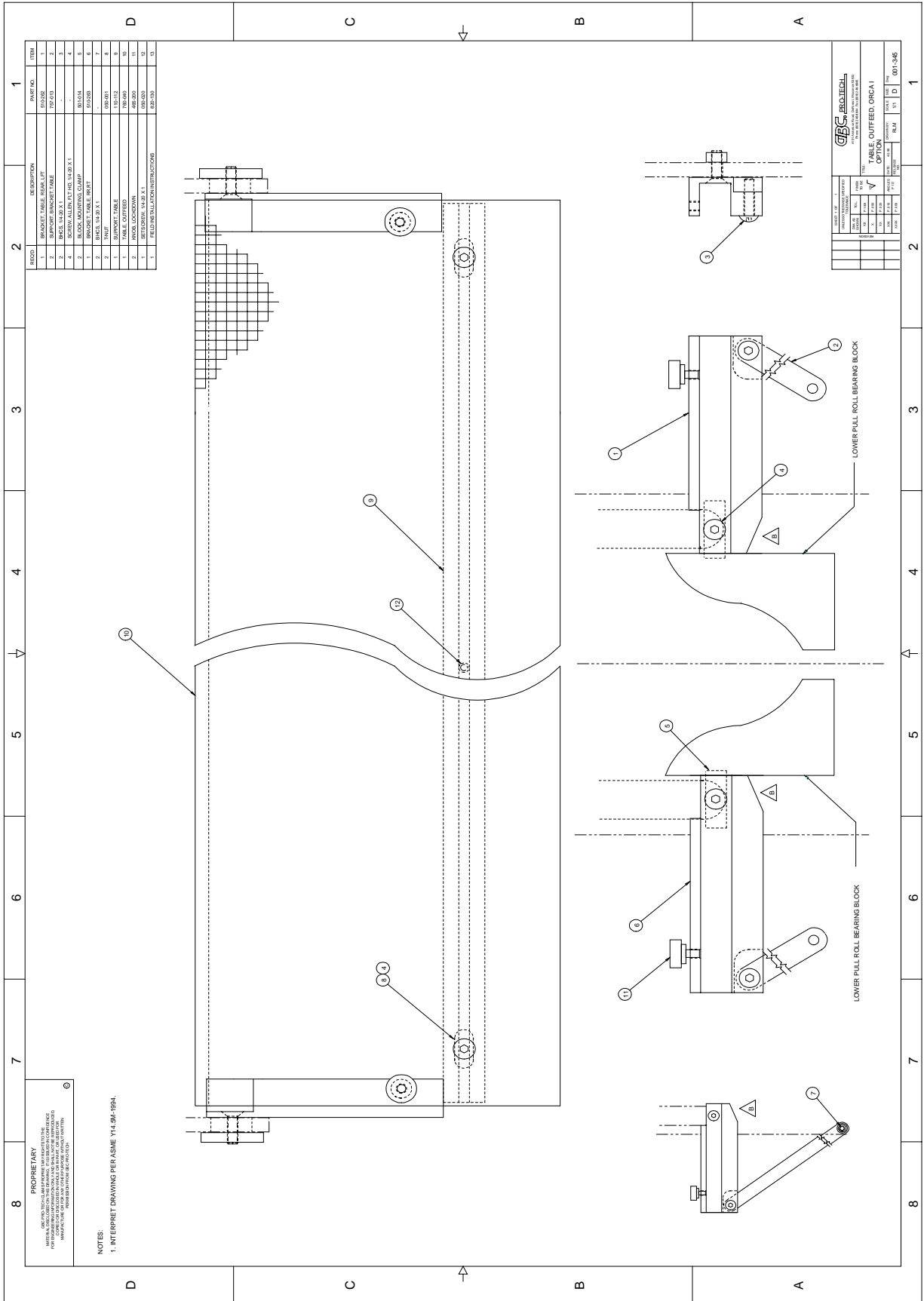


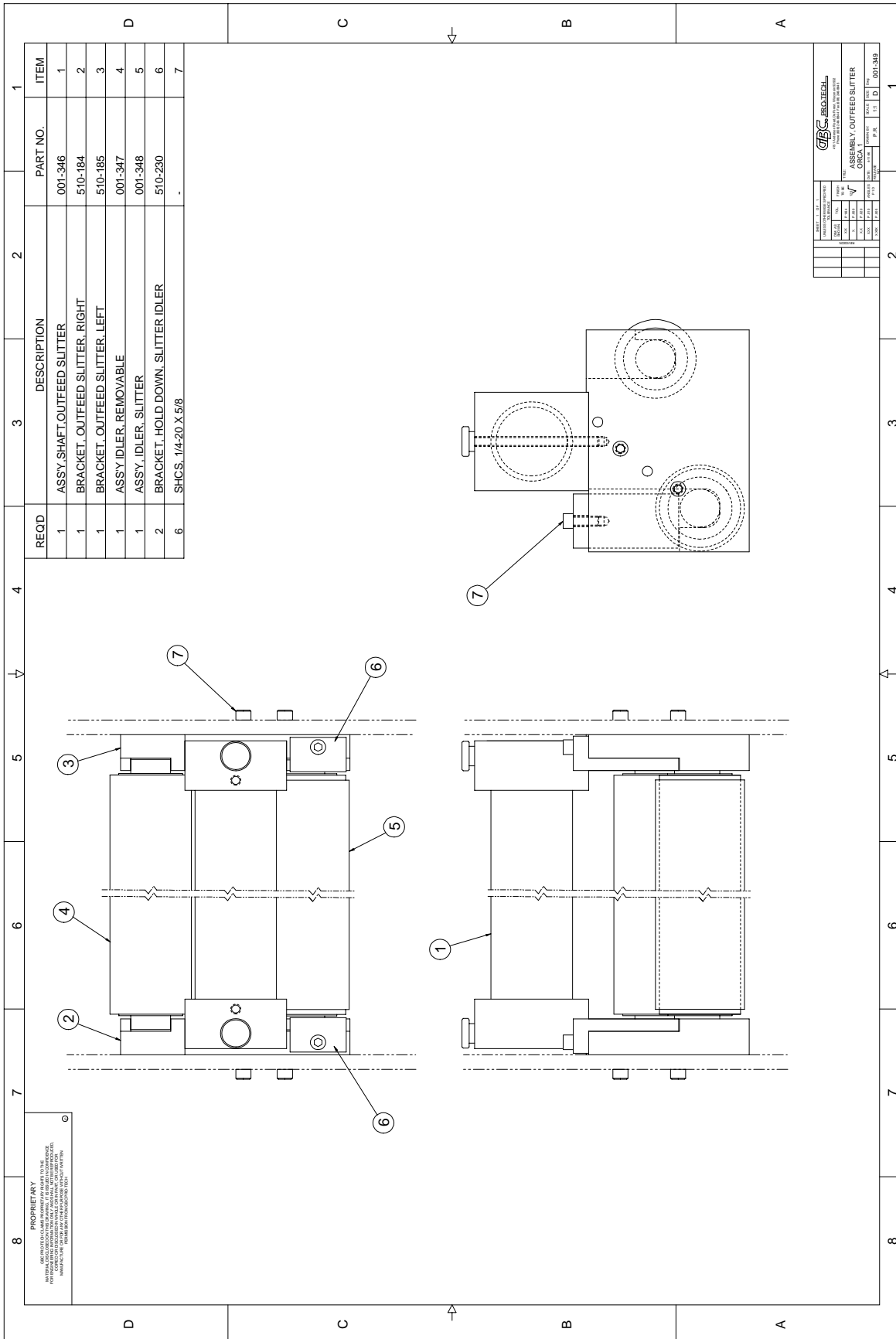
UNLESS OTHERWISE SPECIFIED		FINISH TO BE		ANGLES	
TOLERANCE		125°		P 1 D	
DIM./AS SHOWN	TOL.	P.164	P.050	P.010	P.005
X.X				X.XX	X.XXX
X.				X.X	
X.X					

REVISION		DATE	DRAWN BY:	DWG SCALE:	Dwg:
		11-17-95	HZ	A1	001-338

Pro-Tech Engineering 2117 N. Stoughton Rd. Madison, Wisconsin, 53704 Phone (608) 246-8844 Fax (608) 246-8845	
TITLE: ASSY, TRANS. VOLT. SUPPRESSOR ORCA I	

The print is the property of PRO-TECH ENGR. The information hereon is furnished in confidence.





REQD	DESCRIPTION	PART NO.	ITEM
1	ASSY.SHAFT,OUTFEED SLITTER	001-346	1
1	BRACKET,OUTFEED SLITTER,RIGHT	510-184	2
1	BRACKET,OUTFEED SLITTER,LEFT	510-185	3
1	ASSY.IDLER,REMOVABLE	001-347	4
1	ASSY.IDLER,SLITTER	001-348	5
2	BRACKET,HOLD DOWN,SLITTER IDLER	510-230	6
6	SHCS, 1/4-20 X 5/8	-	7

PROPRIETARY
 ALL INFORMATION CONTAINED HEREIN IS THE PROPERTY OF GBC PRO-TECH, INC. AND IS TO BE USED ONLY FOR THE PURPOSES OF THE PARTS LIST. IT IS NOT TO BE REPRODUCED, COPIED, OR TRANSMITTED IN ANY FORM OR BY ANY MEANS, ELECTRONIC OR MECHANICAL, INCLUDING PHOTOCOPYING, RECORDING, OR BY ANY INFORMATION STORAGE AND RETRIEVAL SYSTEM.

GBC PRO-TECH	
17110 W. 10TH AVE. #100	
DENVER, CO 80231	
TEL: 303.440.1234	
FAX: 303.440.1235	
WWW.GBCPROTECH.COM	
ASSEMBLY, OUTFEED SLITTER	
ORCA 1	
REV	DATE
1	01/01/99
2	01/01/99
3	01/01/99
4	01/01/99
5	01/01/99
6	01/01/99
7	01/01/99
8	01/01/99
9	01/01/99
10	01/01/99
11	01/01/99
12	01/01/99
13	01/01/99
14	01/01/99
15	01/01/99
16	01/01/99
17	01/01/99
18	01/01/99
19	01/01/99
20	01/01/99
21	01/01/99
22	01/01/99
23	01/01/99
24	01/01/99
25	01/01/99
26	01/01/99
27	01/01/99
28	01/01/99
29	01/01/99
30	01/01/99
31	01/01/99
32	01/01/99
33	01/01/99
34	01/01/99
35	01/01/99
36	01/01/99
37	01/01/99
38	01/01/99
39	01/01/99
40	01/01/99
41	01/01/99
42	01/01/99
43	01/01/99
44	01/01/99
45	01/01/99
46	01/01/99
47	01/01/99
48	01/01/99
49	01/01/99
50	01/01/99
51	01/01/99
52	01/01/99
53	01/01/99
54	01/01/99
55	01/01/99
56	01/01/99
57	01/01/99
58	01/01/99
59	01/01/99
60	01/01/99
61	01/01/99
62	01/01/99
63	01/01/99
64	01/01/99
65	01/01/99
66	01/01/99
67	01/01/99
68	01/01/99
69	01/01/99
70	01/01/99
71	01/01/99
72	01/01/99
73	01/01/99
74	01/01/99
75	01/01/99
76	01/01/99
77	01/01/99
78	01/01/99
79	01/01/99
80	01/01/99
81	01/01/99
82	01/01/99
83	01/01/99
84	01/01/99
85	01/01/99
86	01/01/99
87	01/01/99
88	01/01/99
89	01/01/99
90	01/01/99
91	01/01/99
92	01/01/99
93	01/01/99
94	01/01/99
95	01/01/99
96	01/01/99
97	01/01/99
98	01/01/99
99	01/01/99
100	01/01/99

REQD	DESCRIPTION	PART NO.	ITEM
1	BOOSTER, AIR	340-000	1
2	SHCS 10 - 32 X 3/4"	-	2
2	FITTING, ELBOW	330-730	3
1	MUFFLER	330-280	4
1	GUAGE, 160 PSI (SHIPPED LOOSE)	340-001	5
1	FITTING, ADAPTER, 1/4M X 1/4F	-	6

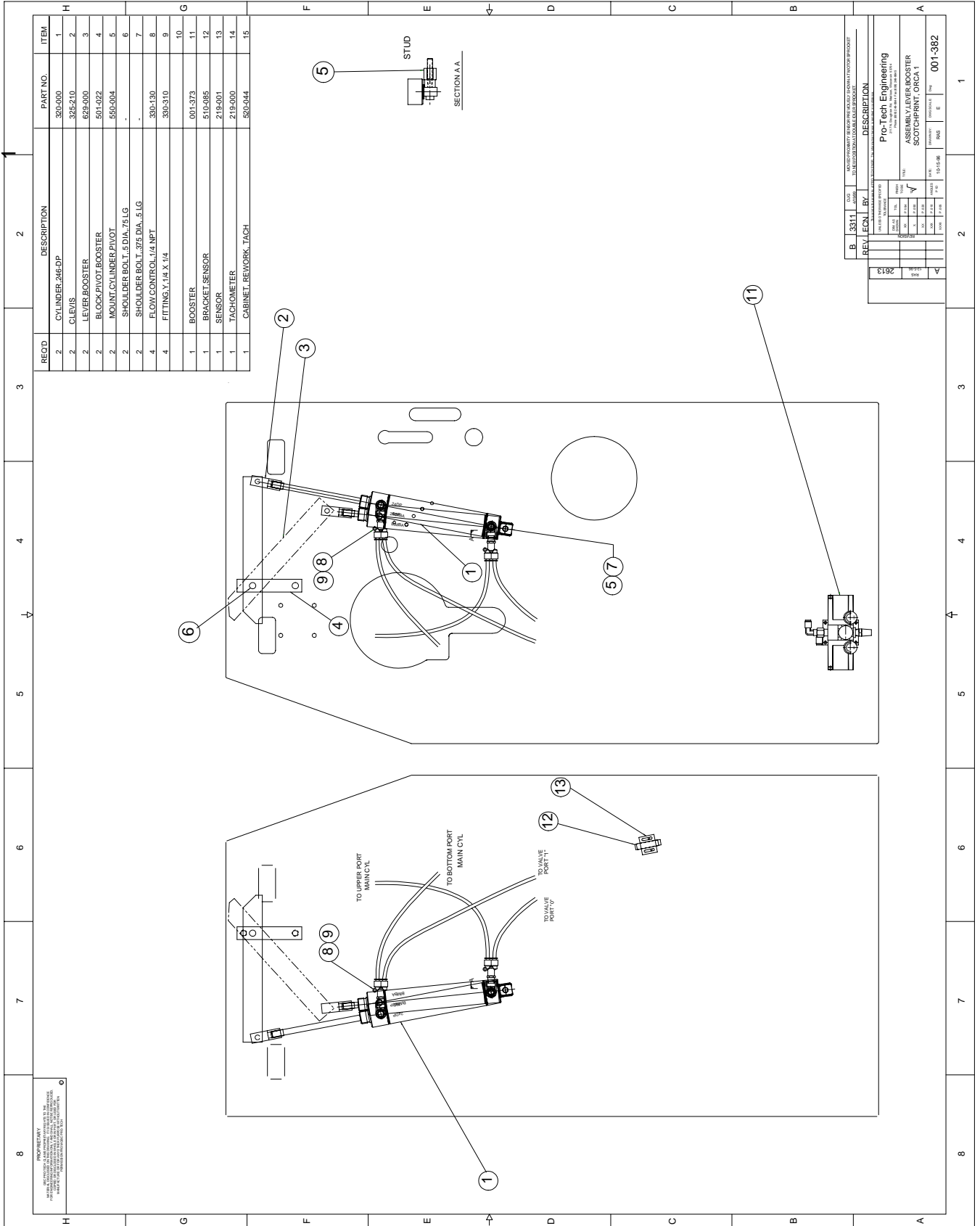
PROPRIETARY
GBC PRO-TECH CLAIMS PROPRIETARY RIGHTS TO THE MATERIAL DISCLOSED ON THIS DRAWING. IT IS ISSUED IN CONFIDENCE FOR THE PURPOSES OF THE PROJECT AND IS NOT TO BE REPRODUCED OR DISCLOSED IN WHOLE OR IN PART, OR USED FOR ANY OTHER PROJECT WITHOUT THE EXPRESS WRITTEN PERMISSION FROM GBC PRO-TECH.

This assembly is not complete to use for CE machines, it requires a relieve valve for trapped pressure

TO MAIN ROLL
REGULATOR SUPPLY

FROM TOP ELECTRICAL AIR
VALVE SUPPLY LINE #5

SHEET 1 OF 1		UNLESS OTHERWISE SPECIFIED	
DATE	SCALE	DATE	SCALE
01/19/98	1:1	01/19/98	1:1
DESIGN	BY	DESIGN	BY
XXX	XXX	XXX	XXX
CHKD	CHKD	CHKD	CHKD
XXX	XXX	XXX	XXX
APPROV	APPROV	APPROV	APPROV
XXX	XXX	XXX	XXX
TITLE		ASSEMBLY, BOOSTER, AIR, 160 PSI	
DRAWN BY		RAS	
DATE		01/19/98	
RELEASE		C	
SCALE		1:1	
SIZE		Dwg	
PART NO.		001-373	



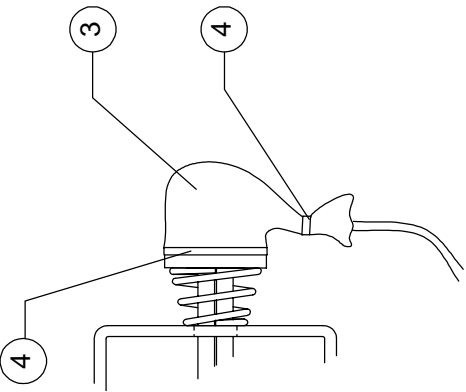
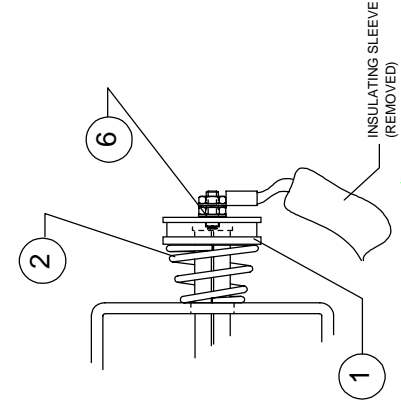
REQD	DESCRIPTION	PART NO.	ITEM
4	SPACER, HEATER SPRING	755-061	1
4	SPRING	089-022	2
-	SLEEVE, INSULATING	180-006	3
8	CABLE TIE, .8"	STOCK	4
1	INSTRUCTIONS, HEATER TENSION	820-063	5
4	#10 EXTERNAL LOCK WASHERS	-	6

33735

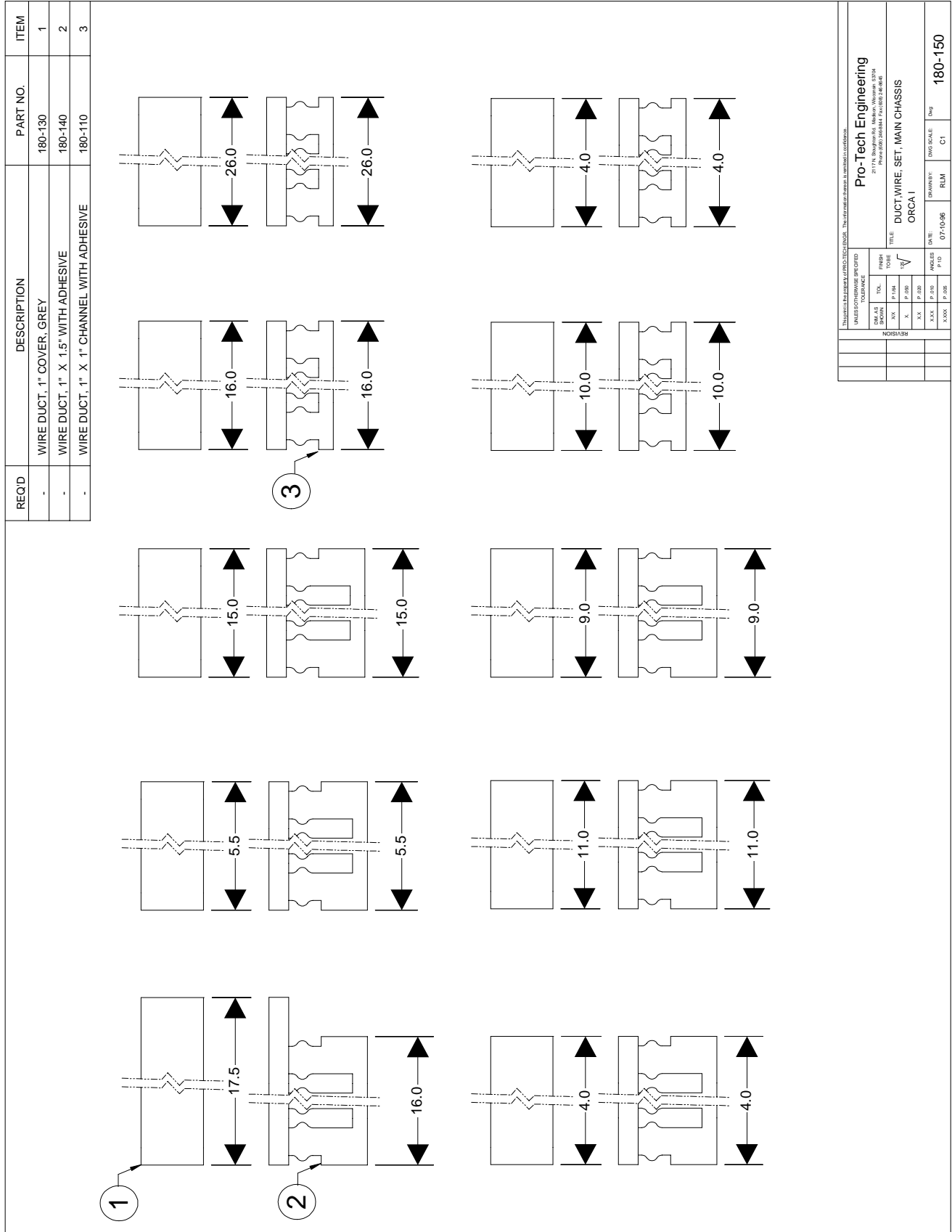
PROPRIETARY
 GBC PRO-TECH CLAIMS PROPRIETARY RIGHTS TO THE INFORMATION CONTAINED HEREIN AND SHALL NOT BE COPIED OR DISCLOSED WITHOUT THE WRITTEN PERMISSION OF GBC PRO-TECH.



NOTES:
 1. PARTS ARE SHIPPED LOOSE.



SHEET 1937 OF -		UNLESS OTHERWISE SPECIFIED TOLERANCE		FINISH TO BE	
DIM AS SHOWN	X.X	TOL	P .1/64	125	✓
	X		P .050		
	X.X		P .020		
	X.XX		P .010	ANGLES	P ID
	X.XXX		P .005		
REVISION		DATE		DRAWN BY:	
3148	A/H	7/20/98		BJT	
	A				
GBC PRO-TECH		4151 Anderson Road, DeForest, Wisconsin 53532 Phone (608) 246-8844 Fax (608) 246-8645		TITLE: KIT, HEATER TENSION ORCA I, ORCA I SP	
SCALE: 1:1		SIZE: A		Dwg: 005-028	
RELEASE NO. 1937		DATE: 3-21-98		DRAWN BY: BJT	



UNIVERSAL DIMENSIONING SYSTEM DIMENSIONAL TOLERANCES UNLESS OTHERWISE SPECIFIED XX.X P. 0.00 X.X P. 0.05 .X.X P. 0.02 .XX P. 0.01		FILE DUCT WIRE SET, MAIN CHASSIS ORCA I
REVISION X.XX P. 0.00 X.XXX P. 0.00	DATE 07-10-96	DWG SCALE RLM C1
PROJECT NO. 180-150		DRAWN BY RLM
TITLE DUCT WIRE SET, MAIN CHASSIS		DWG NO. 180-150