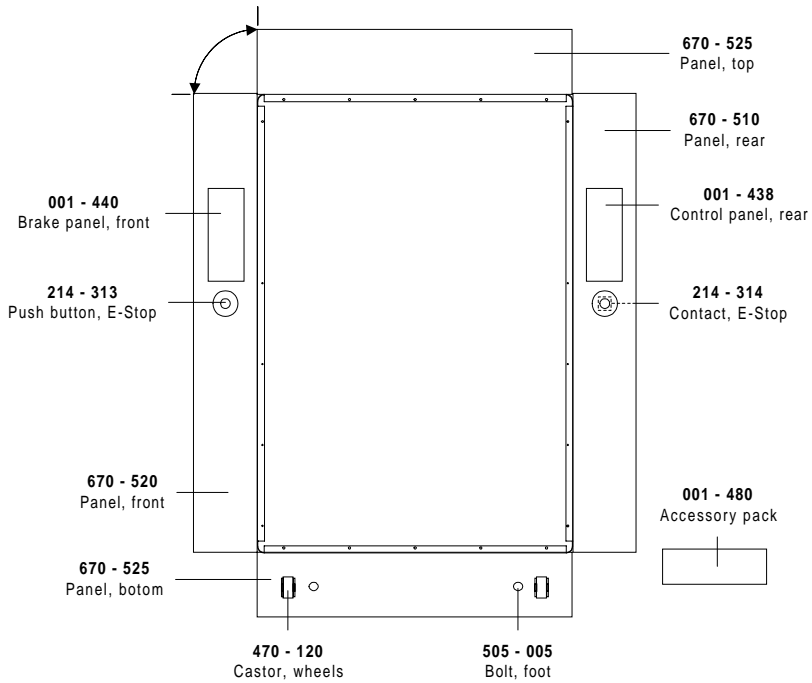
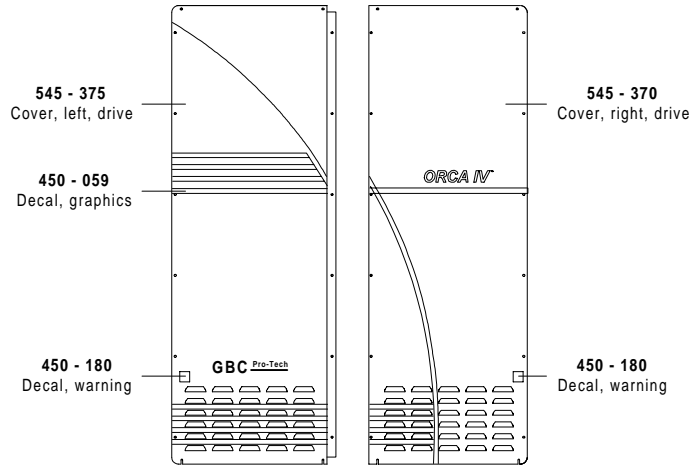


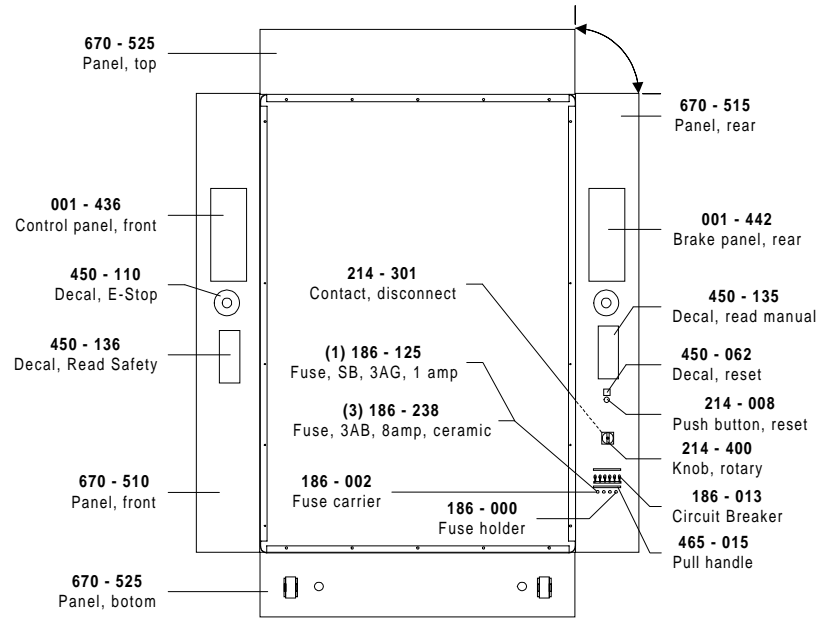
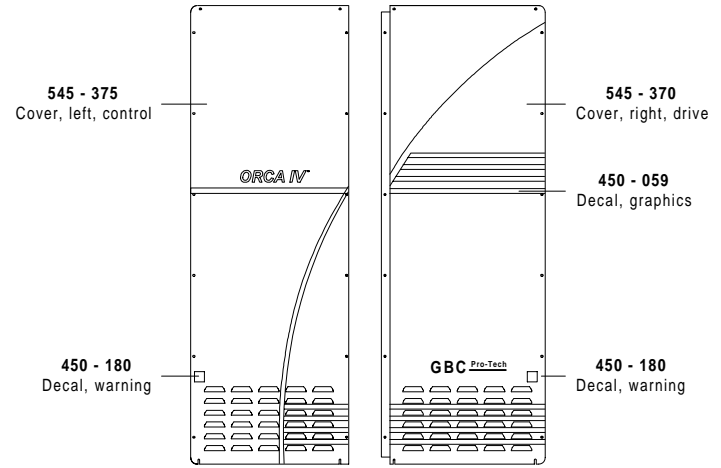
Orca IV
Illustrated Parts Booklet
(000 - 060)

Available Options ;
001 - 467 (Preheater)

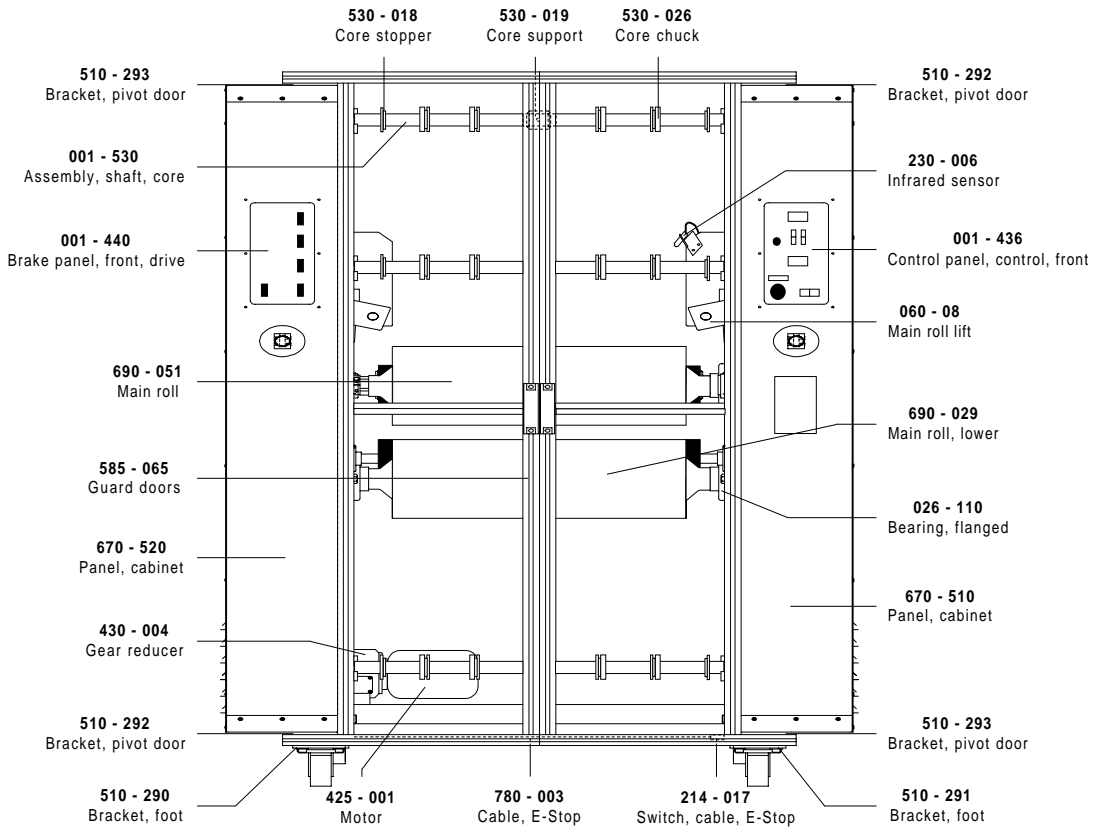
Drive Side



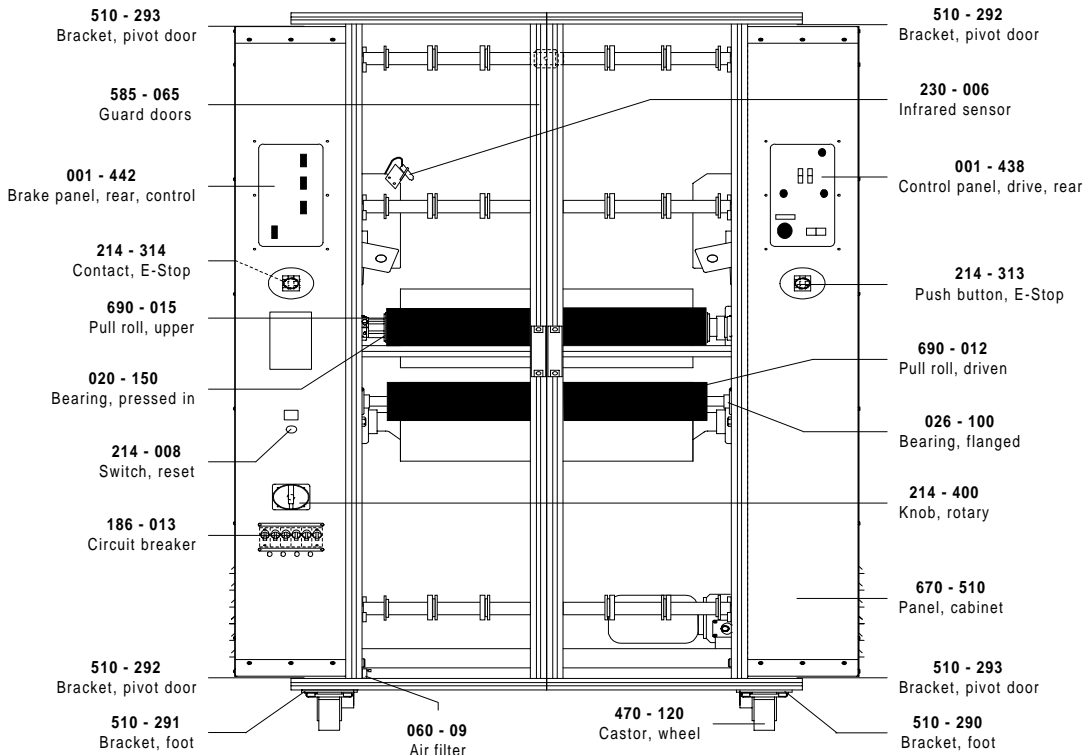
Control Side

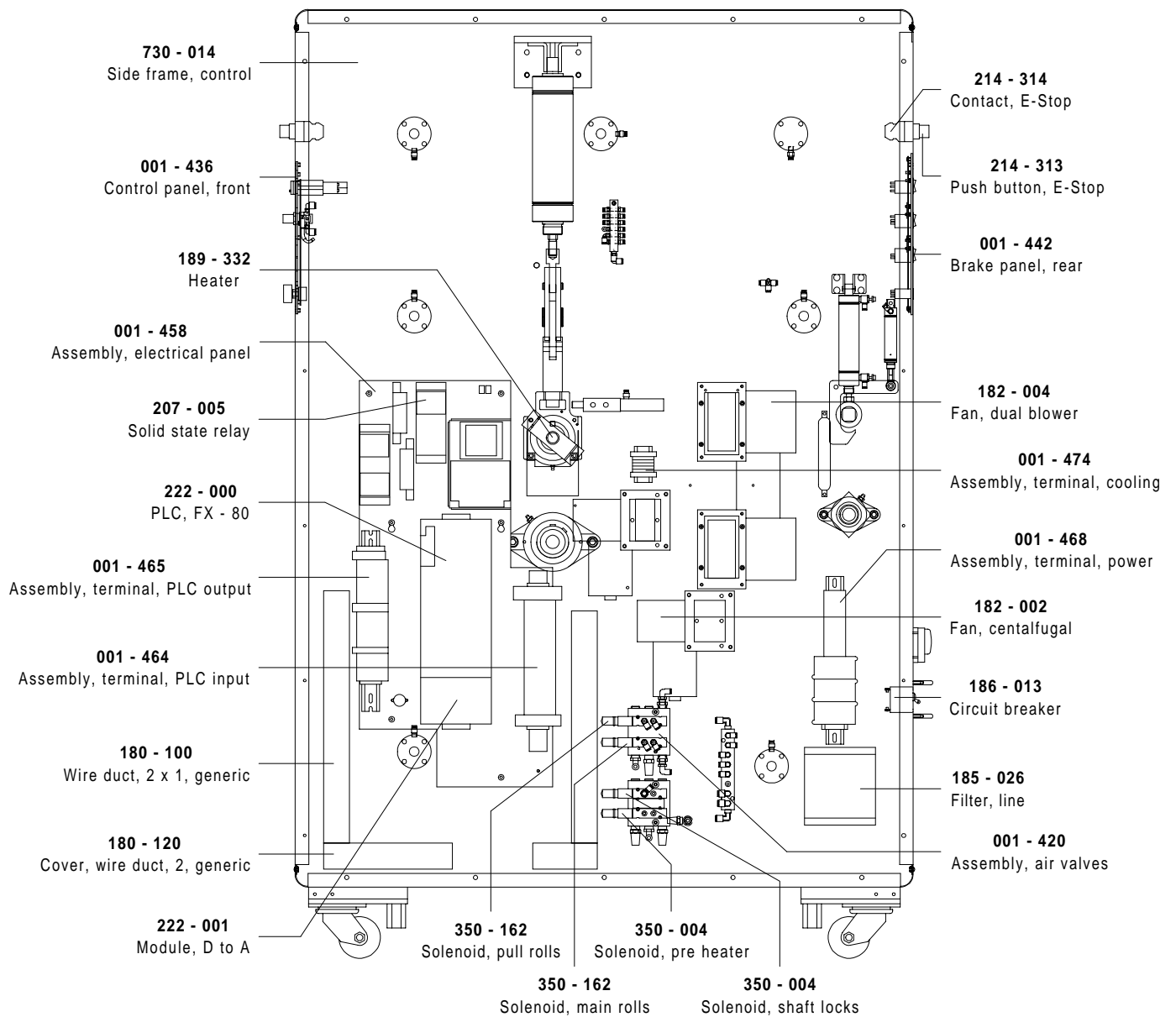


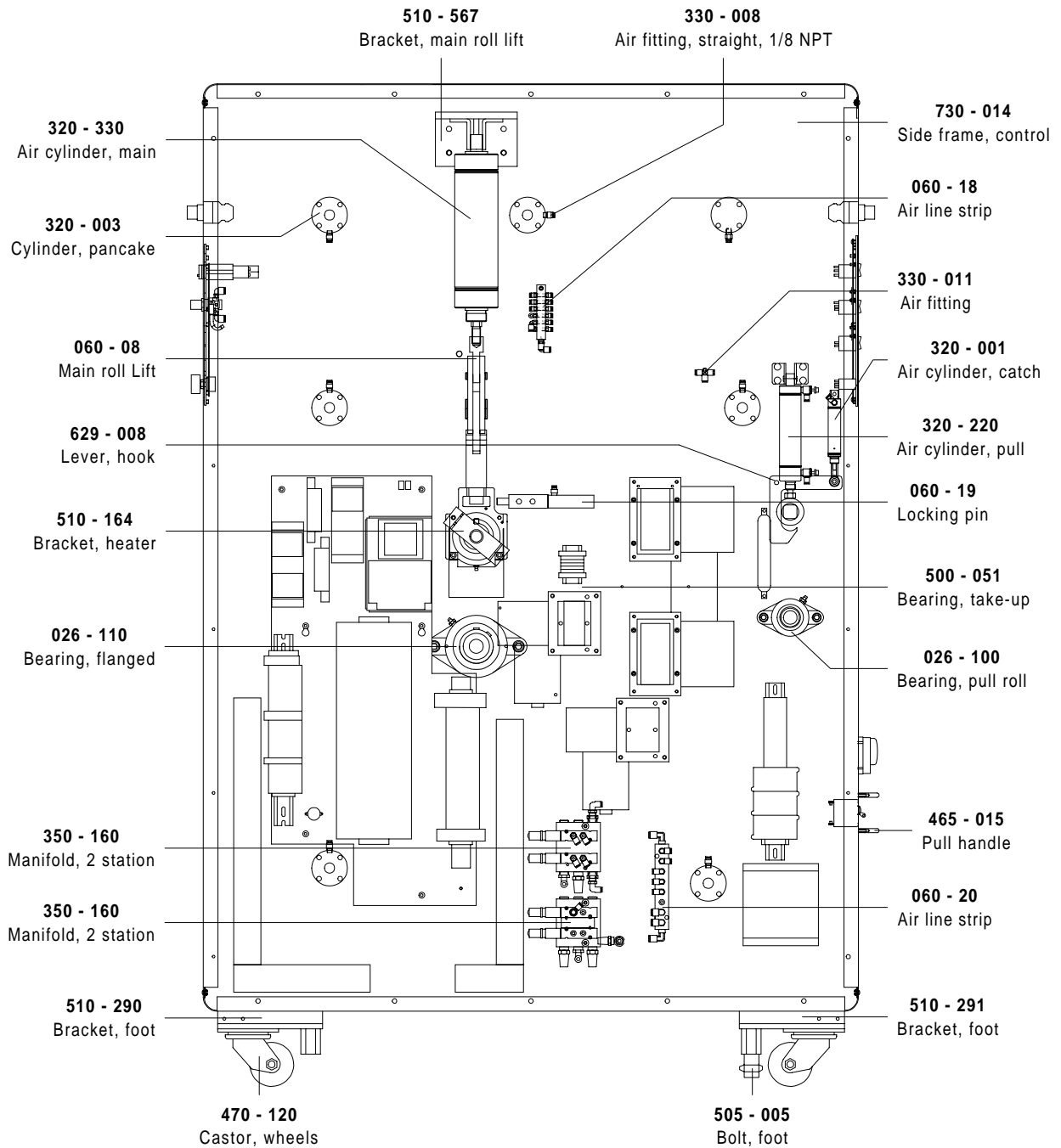
Front View

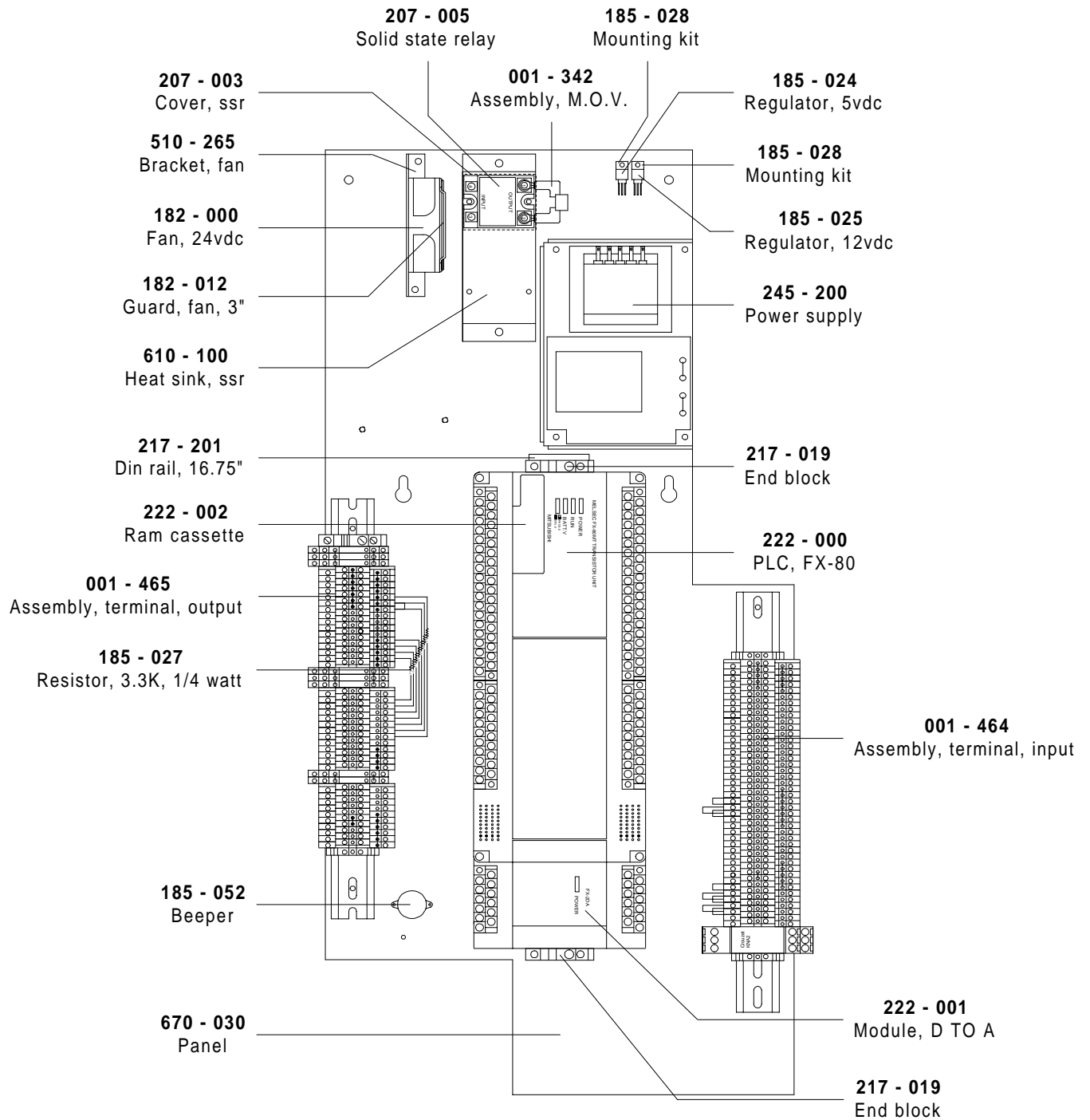


Rear View

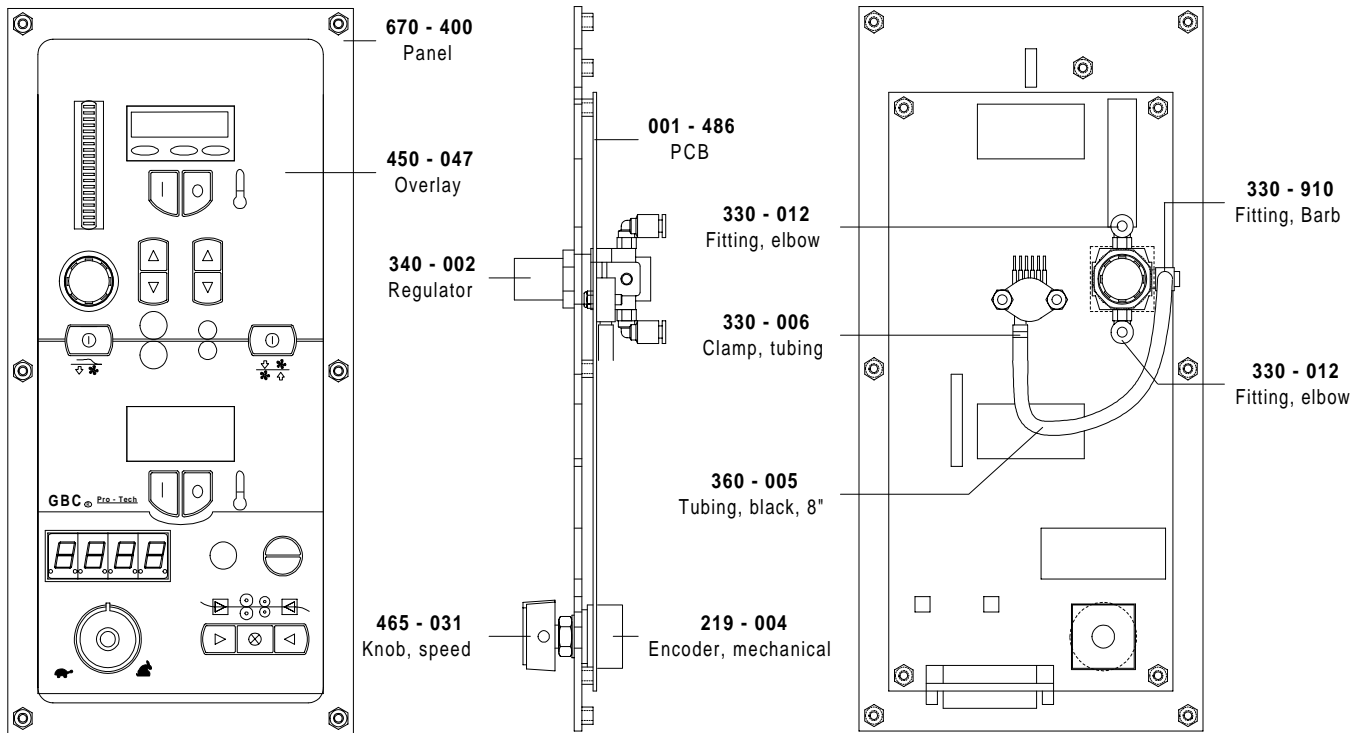




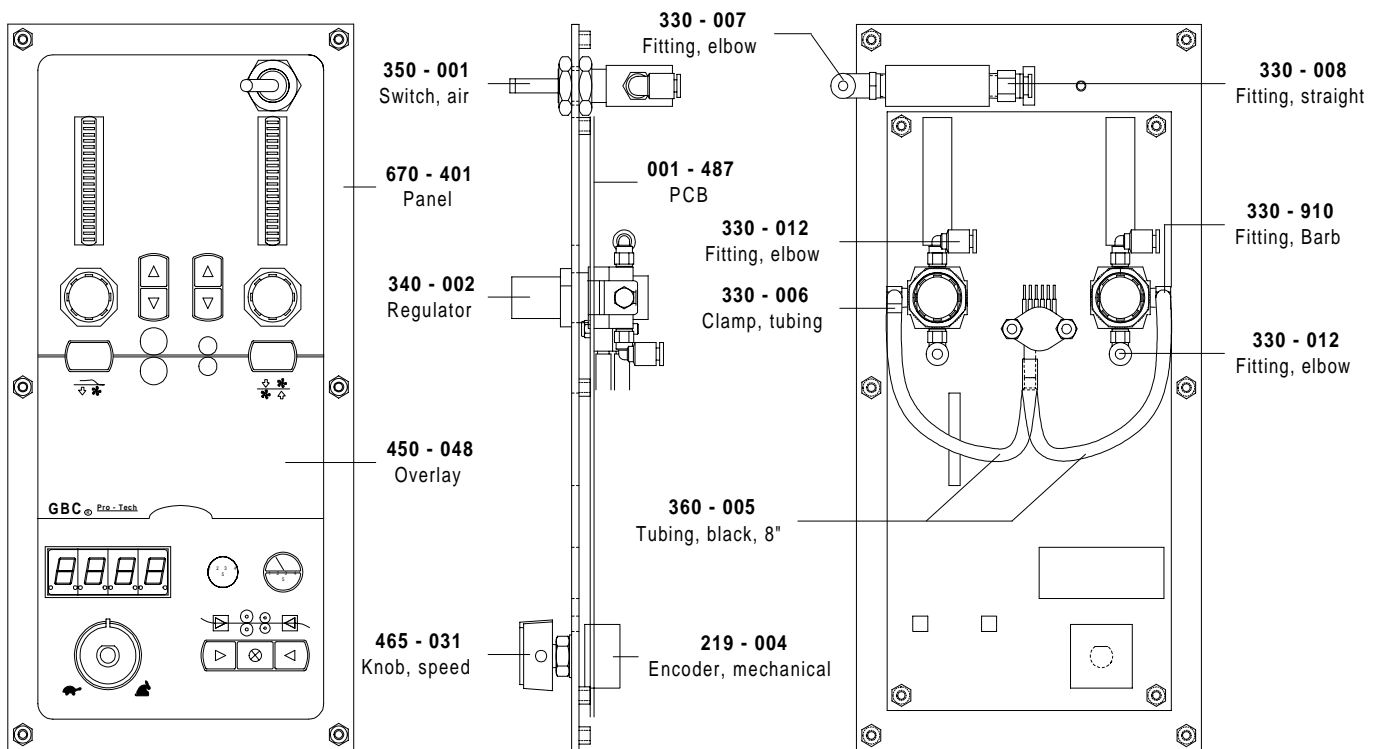




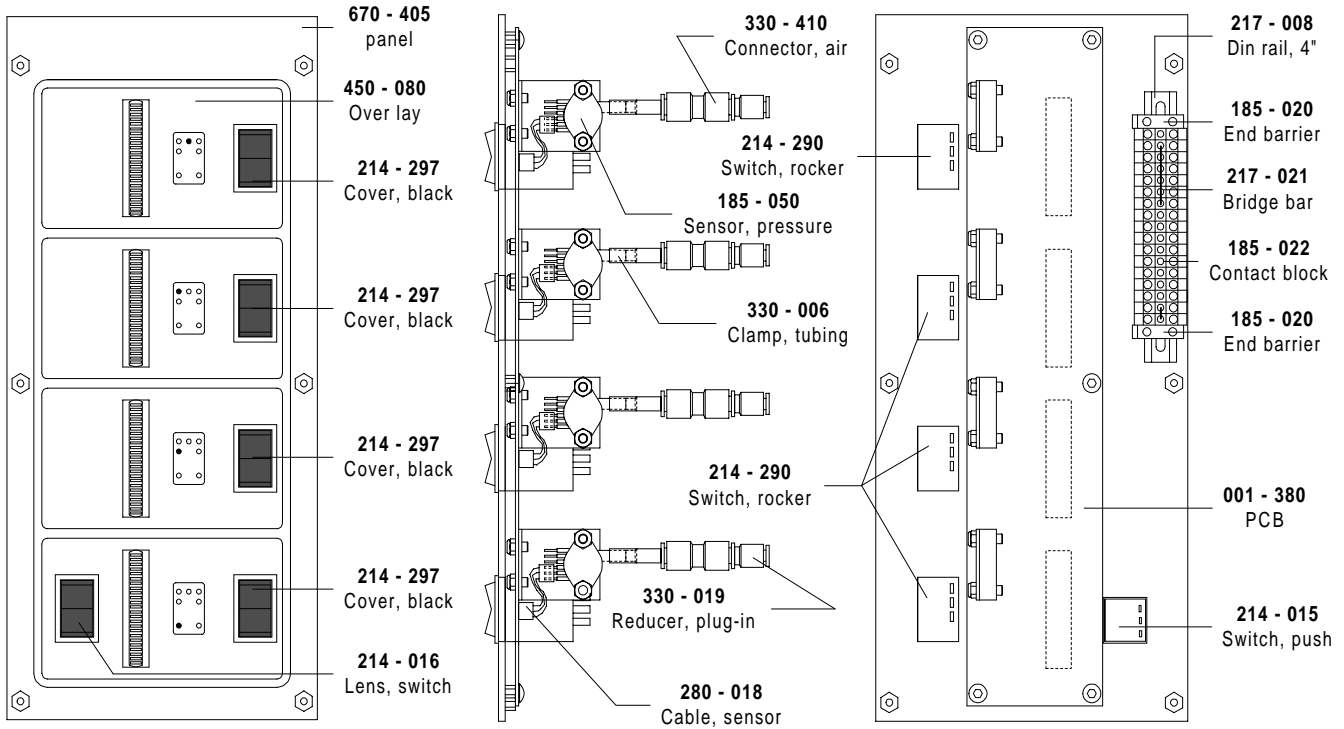
001 - 436 Front Control Panel



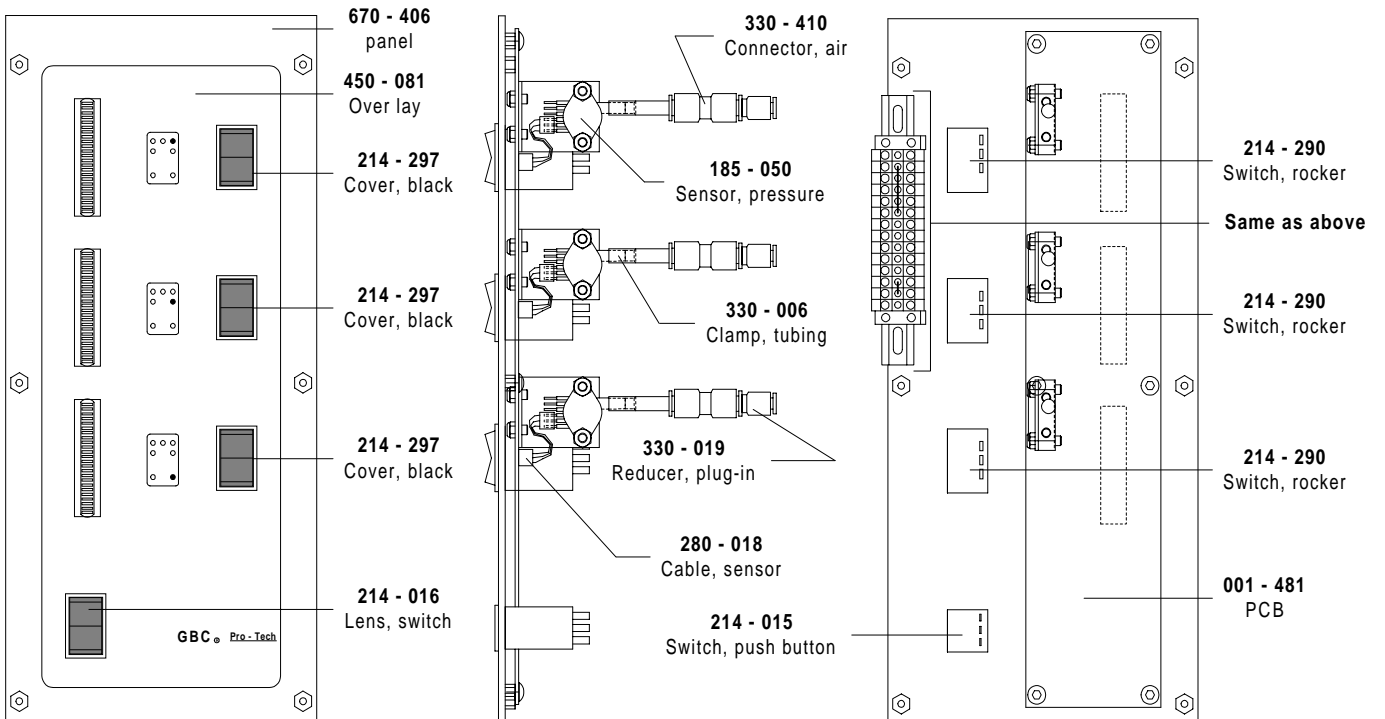
001 - 438 Rear Control Panel

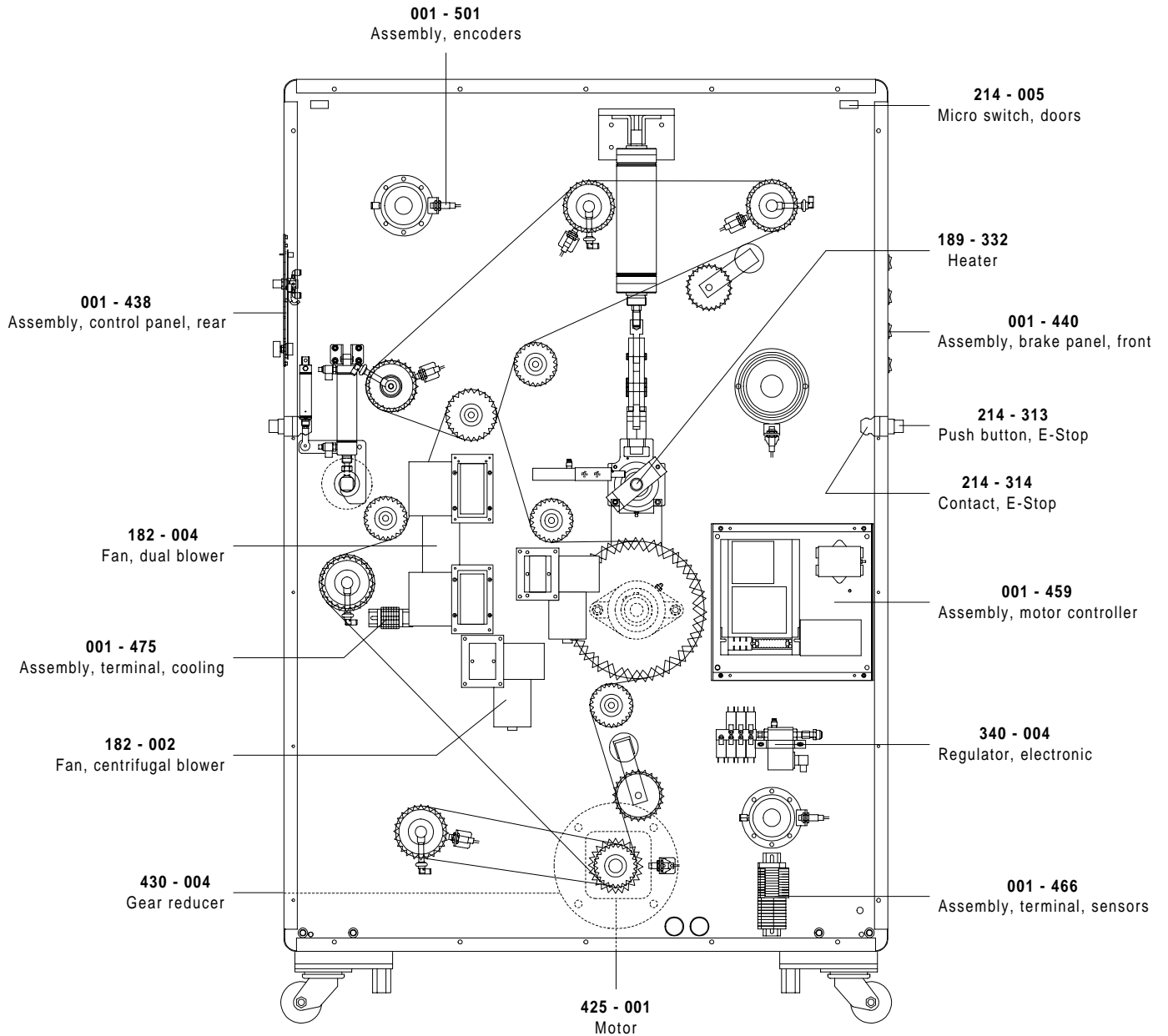


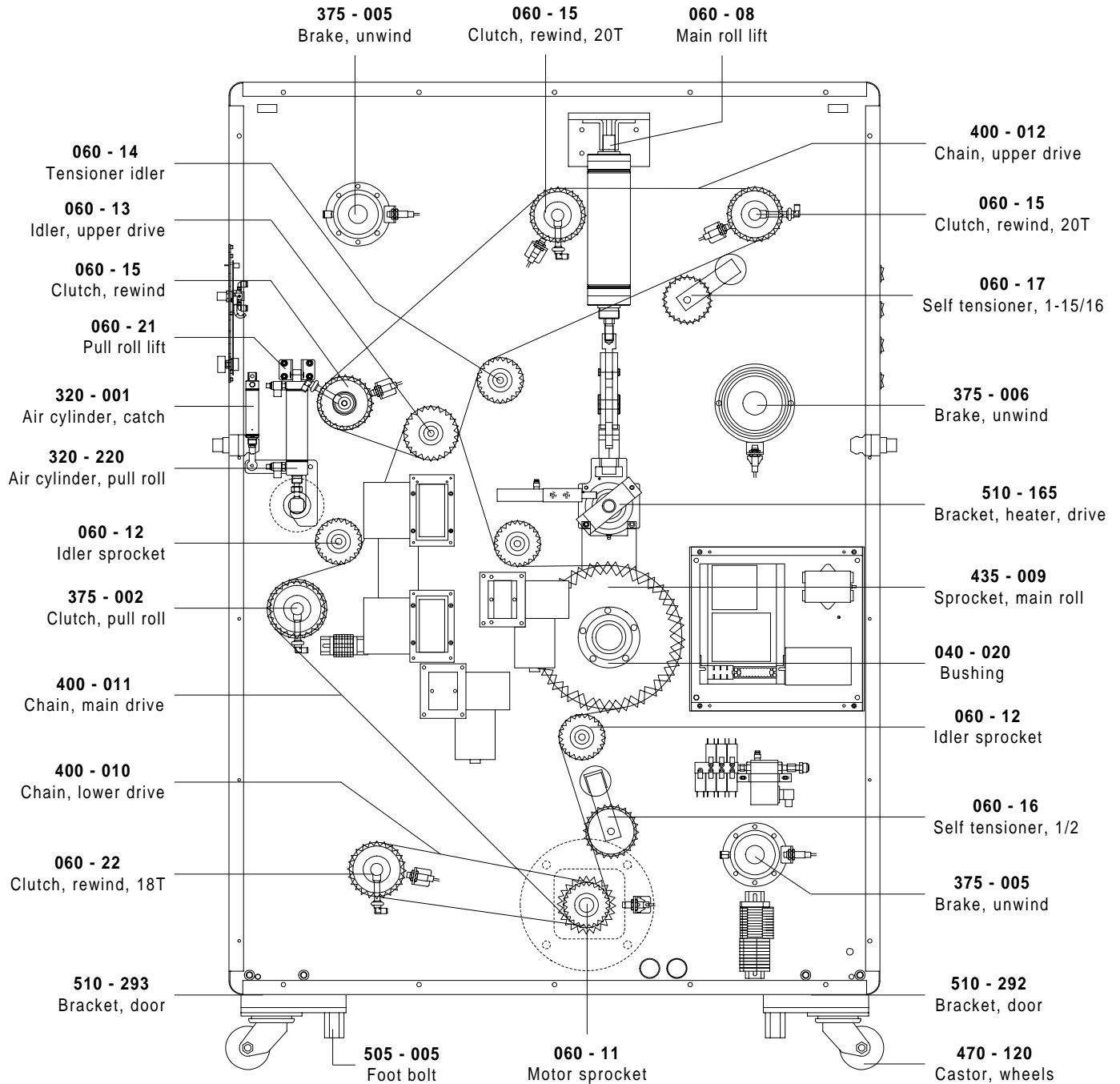
001 - 440 Front Brake Panel

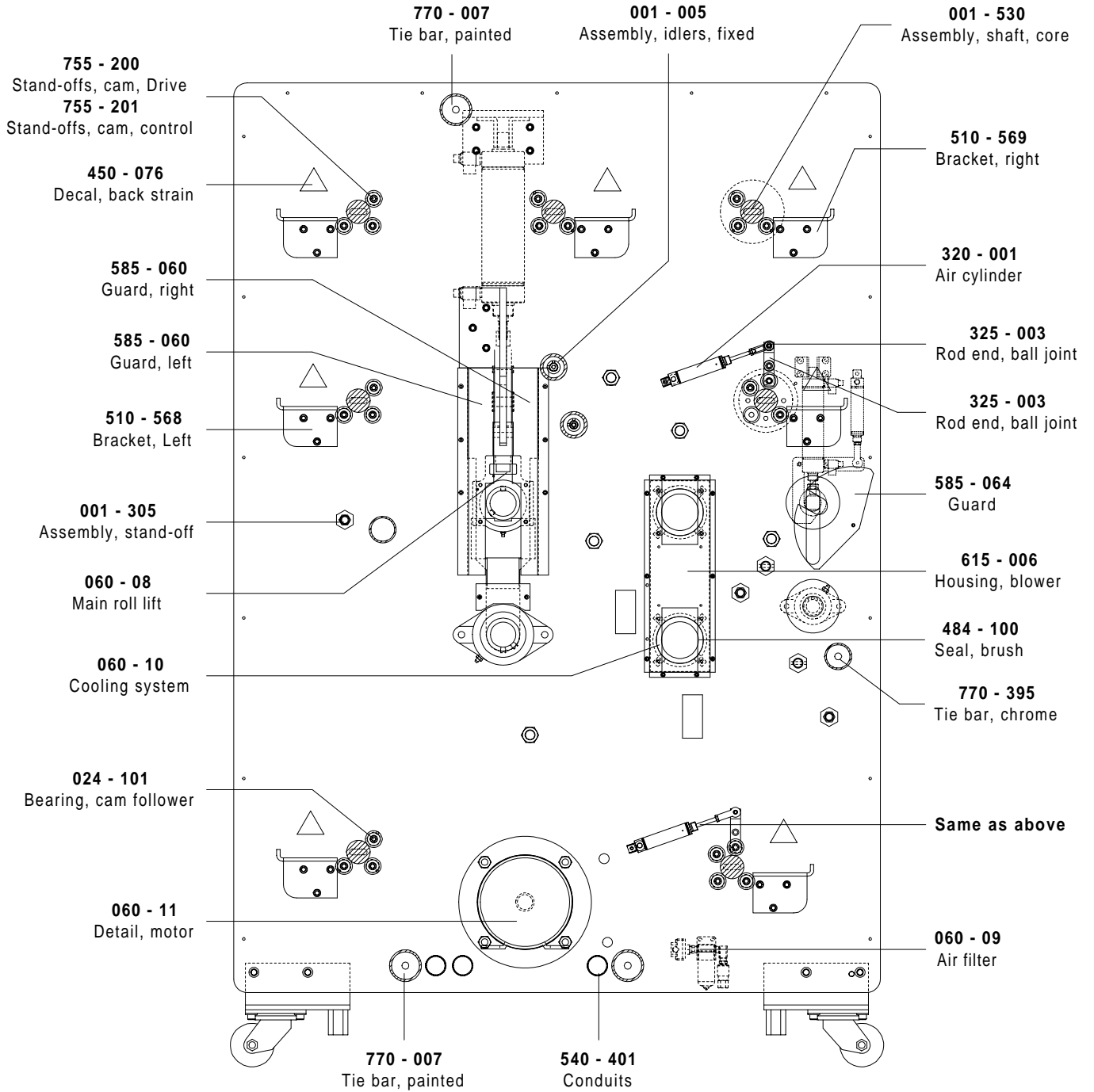


001 - 442 Rear Brake Panel



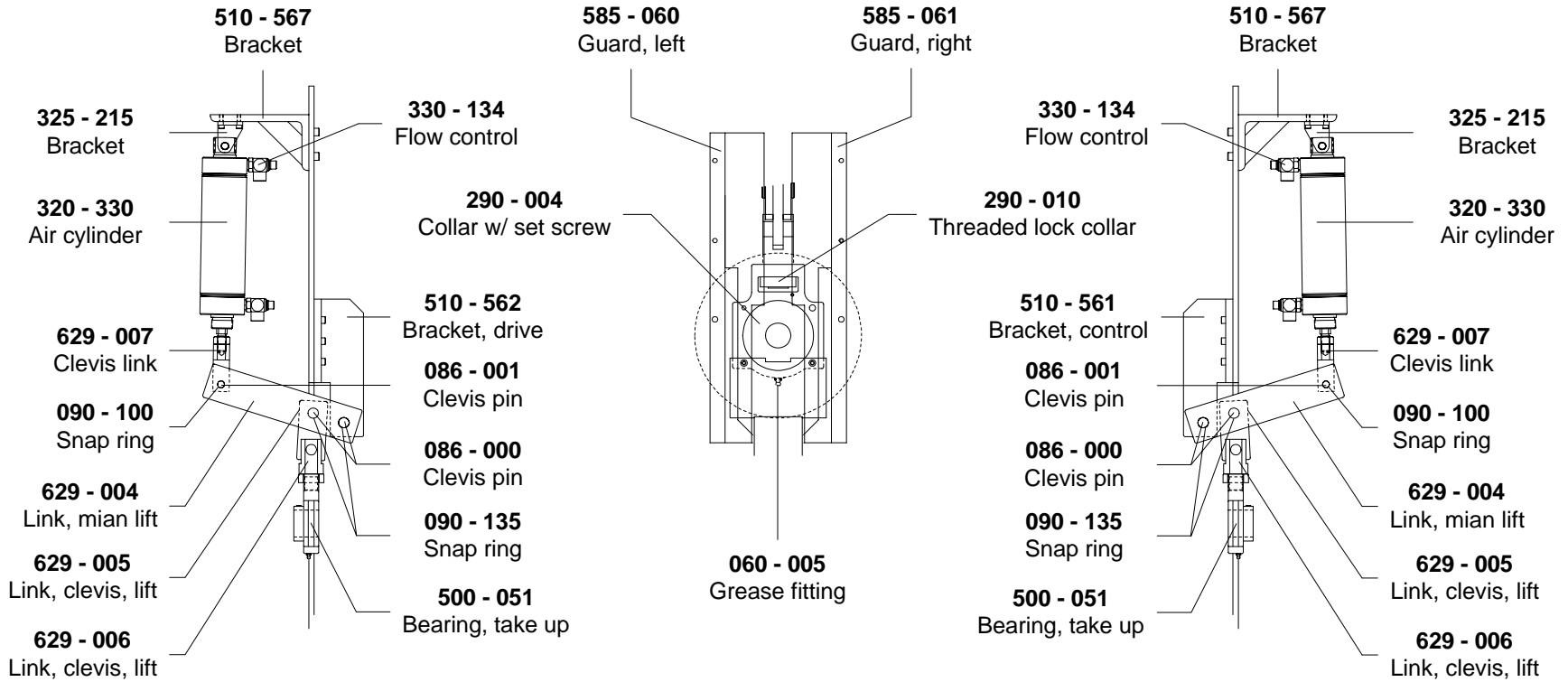


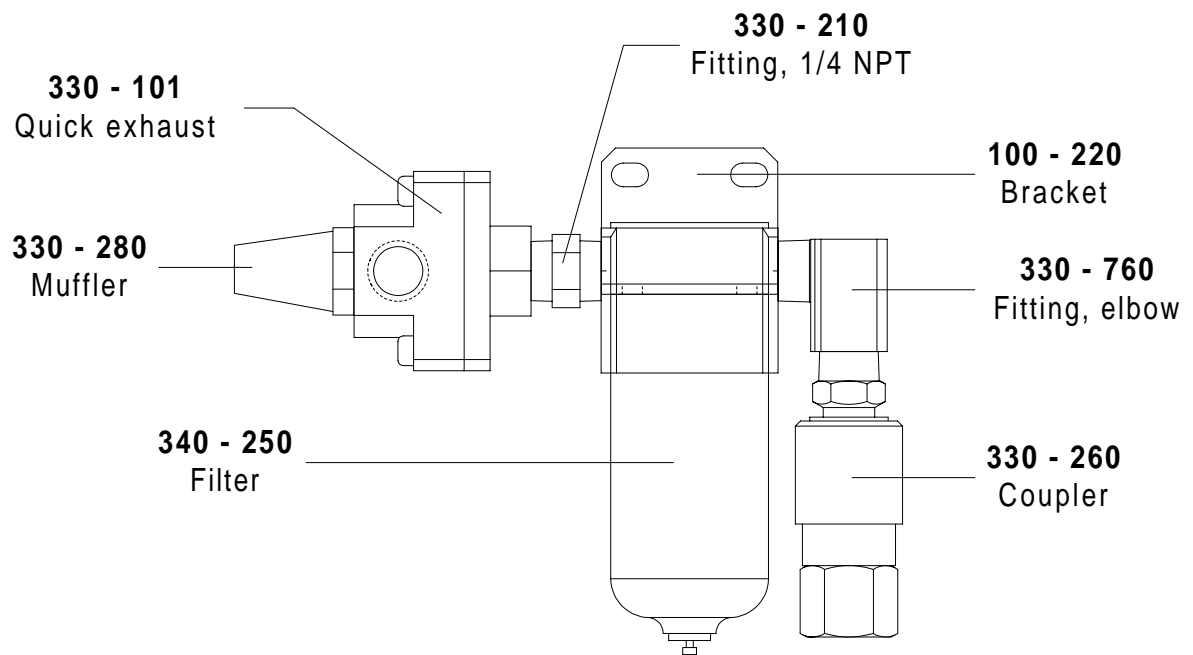


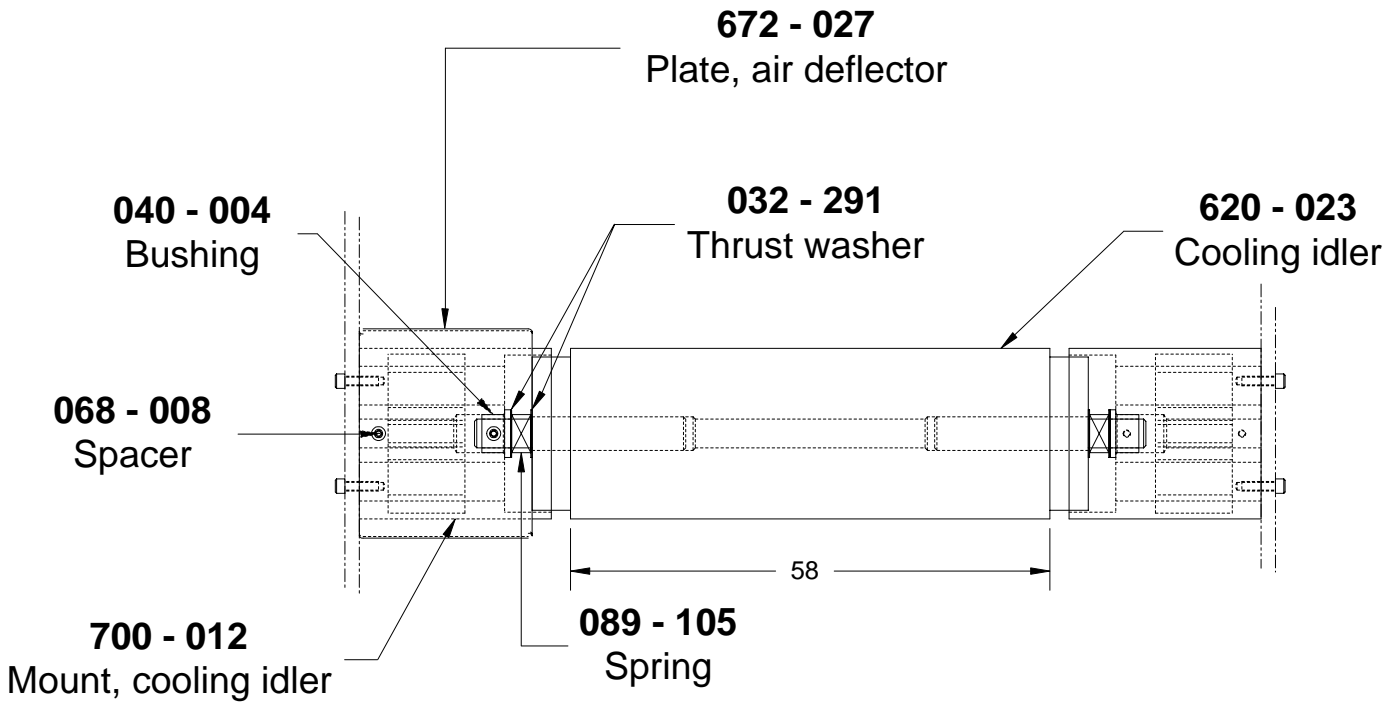


Drive Side

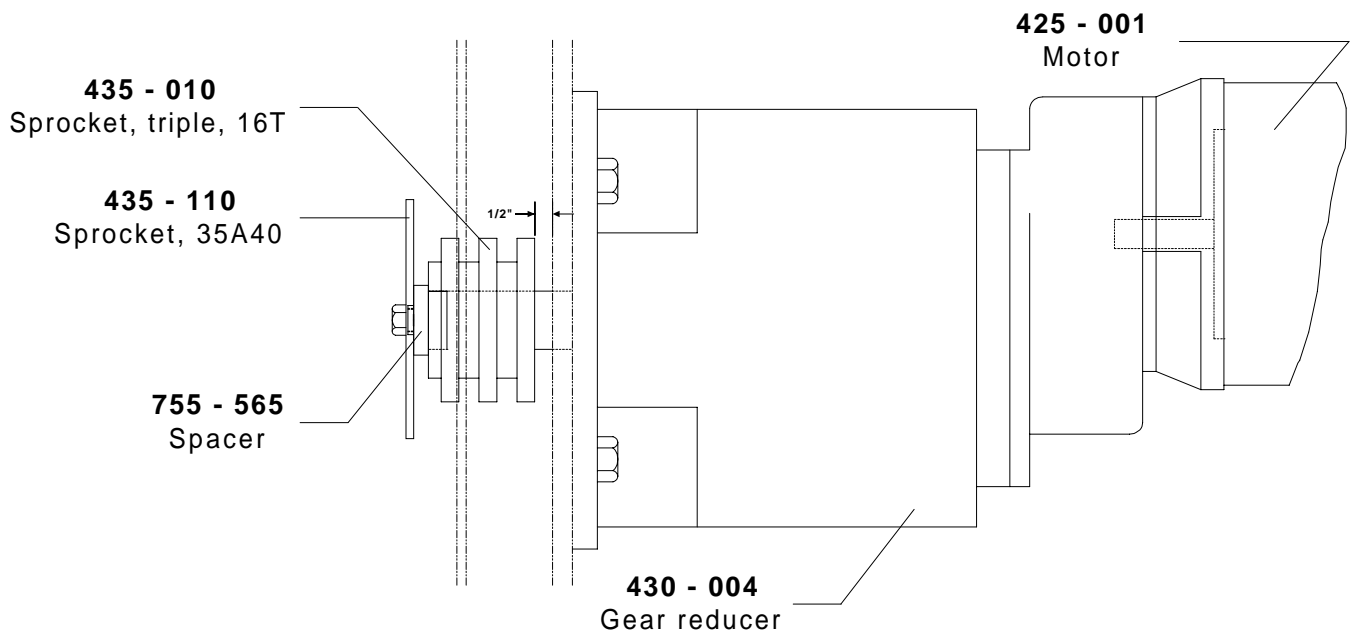
Control Side

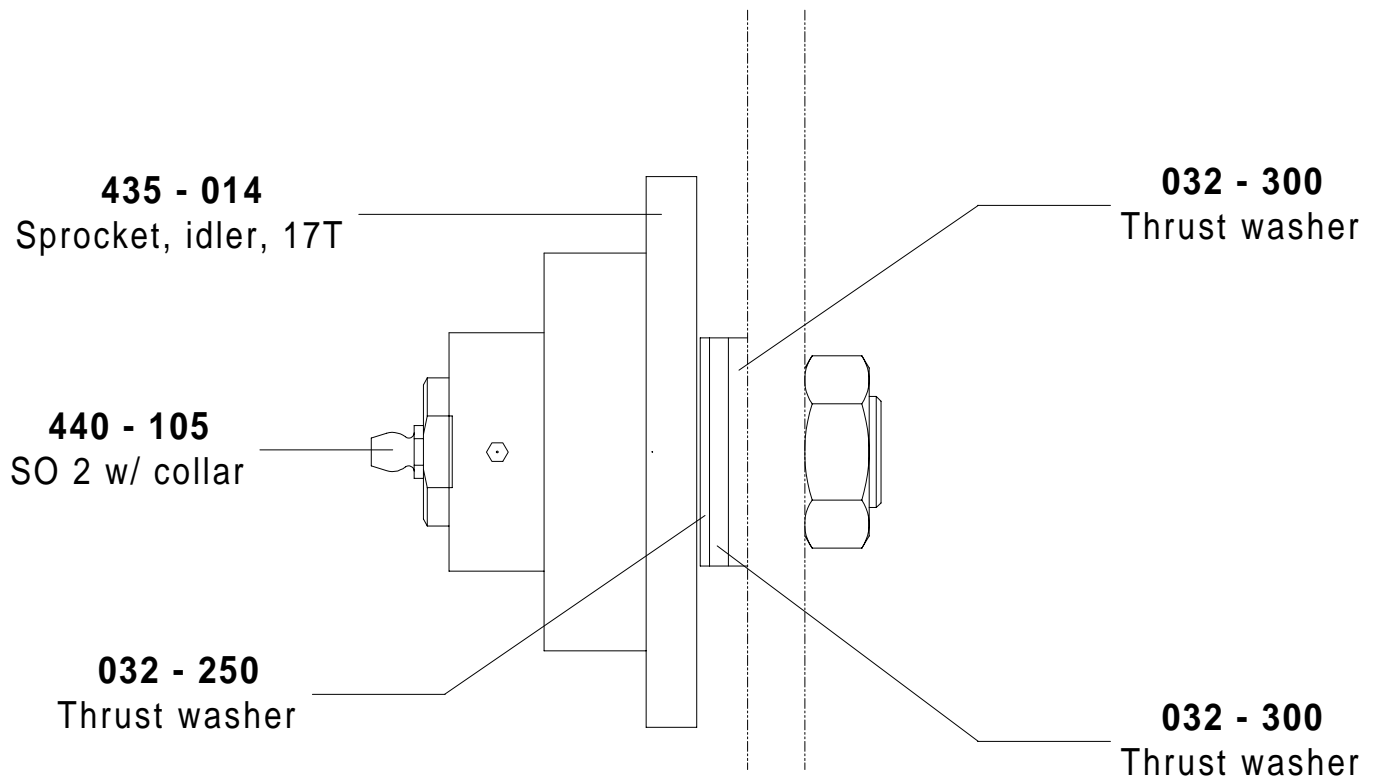


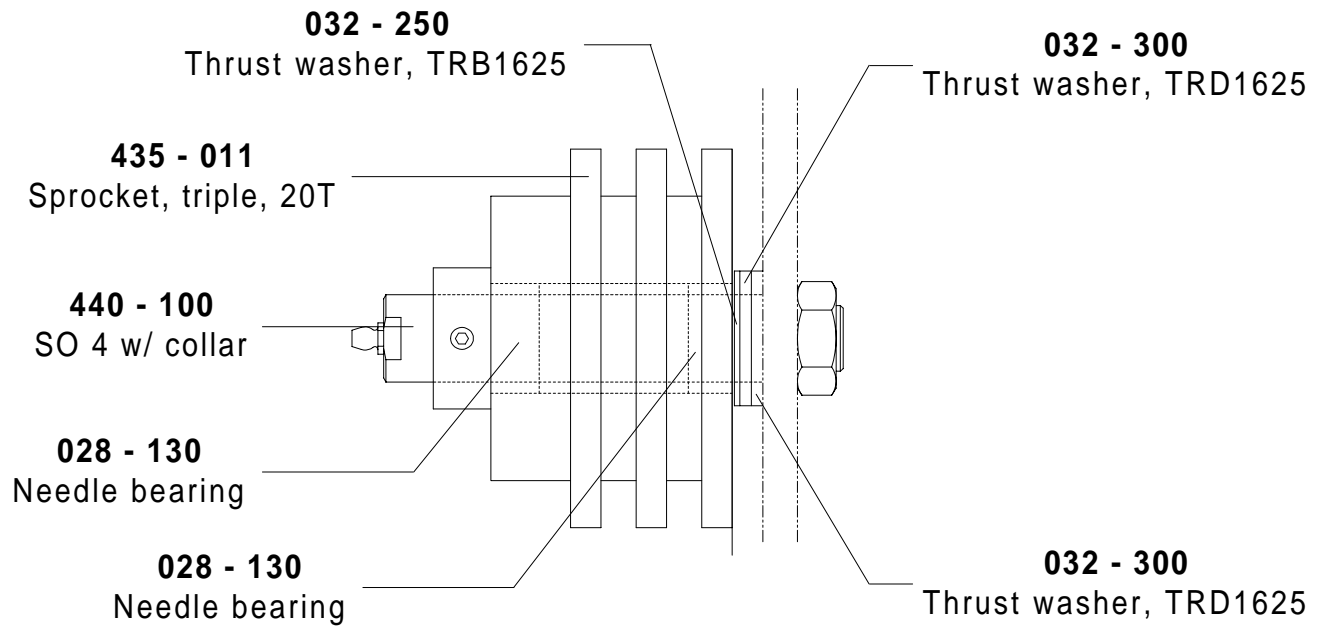


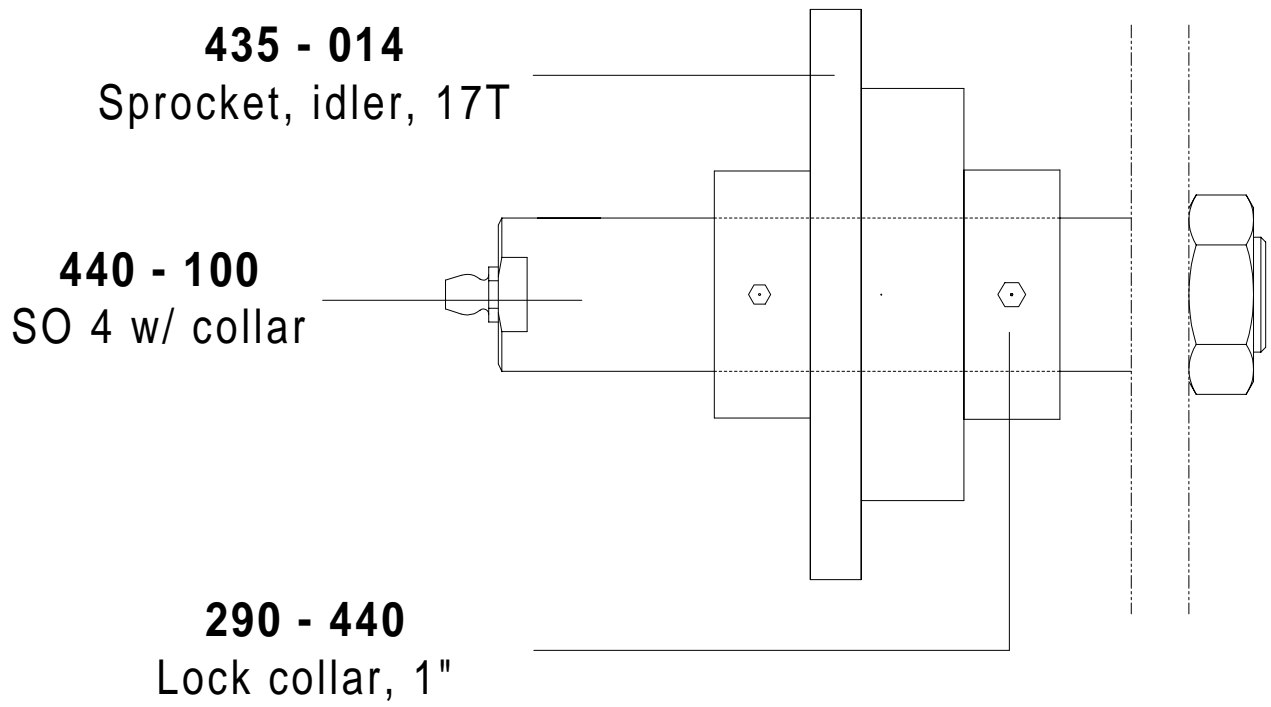


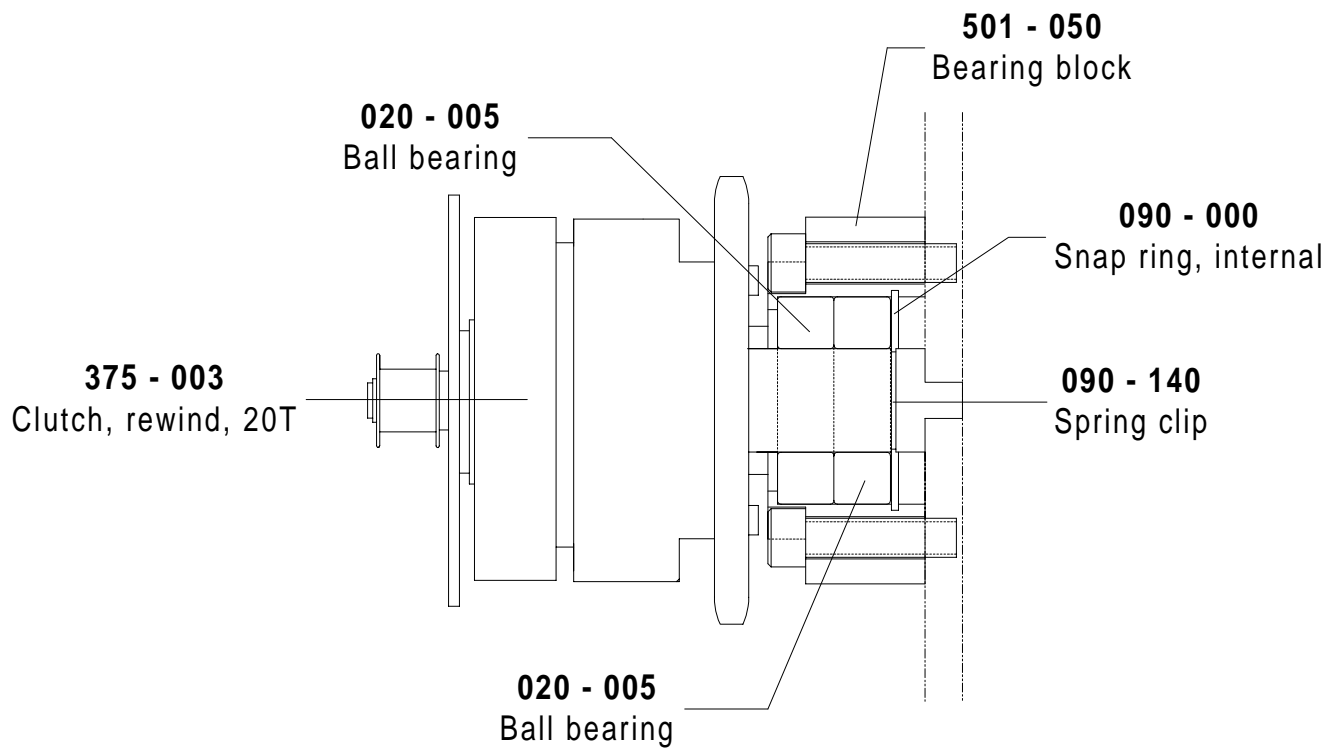
VIEWED FROM FRONT OF MACHINE

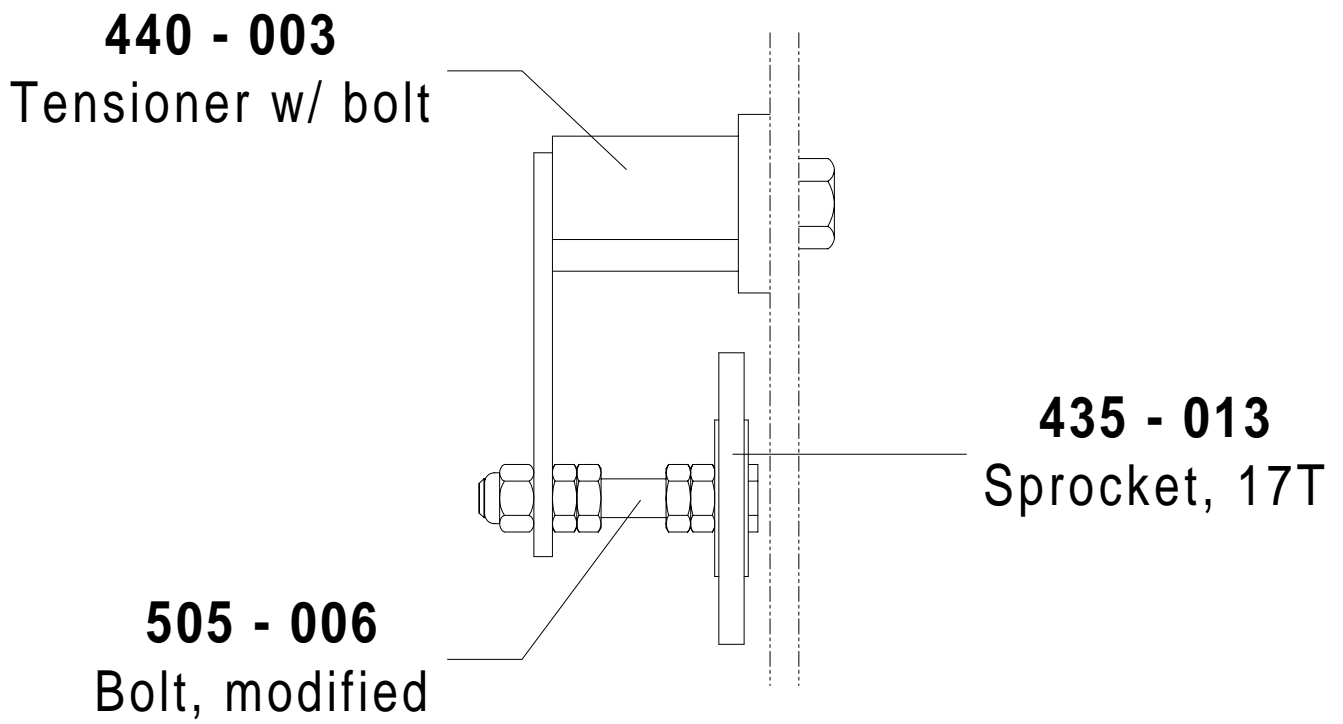


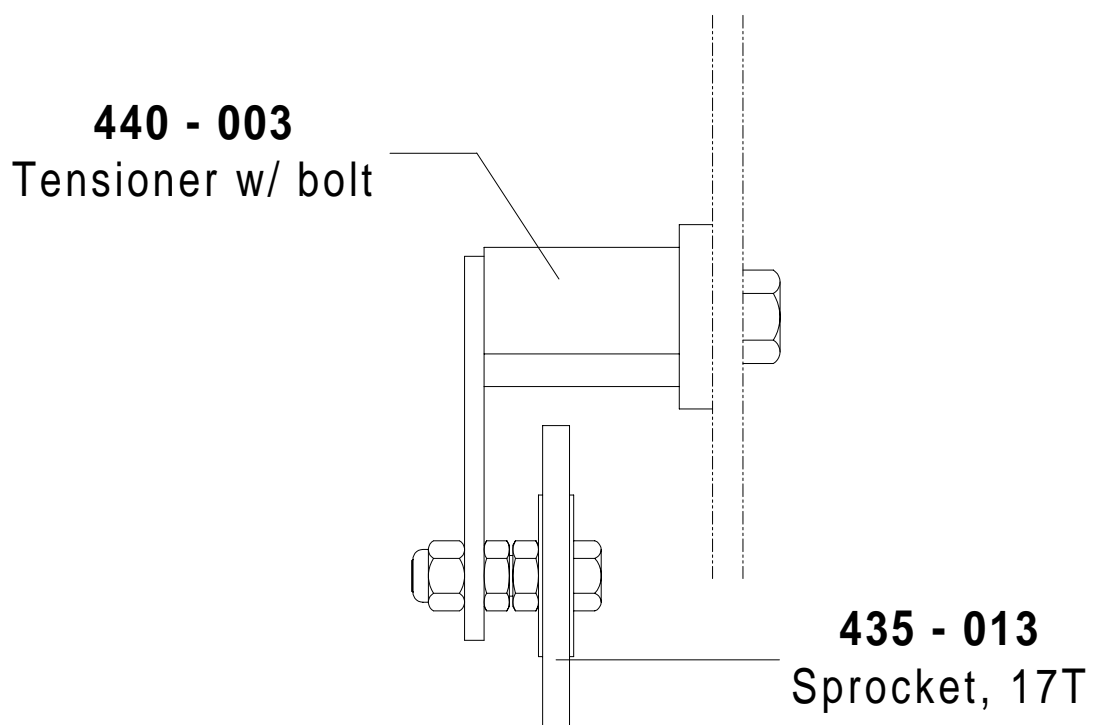


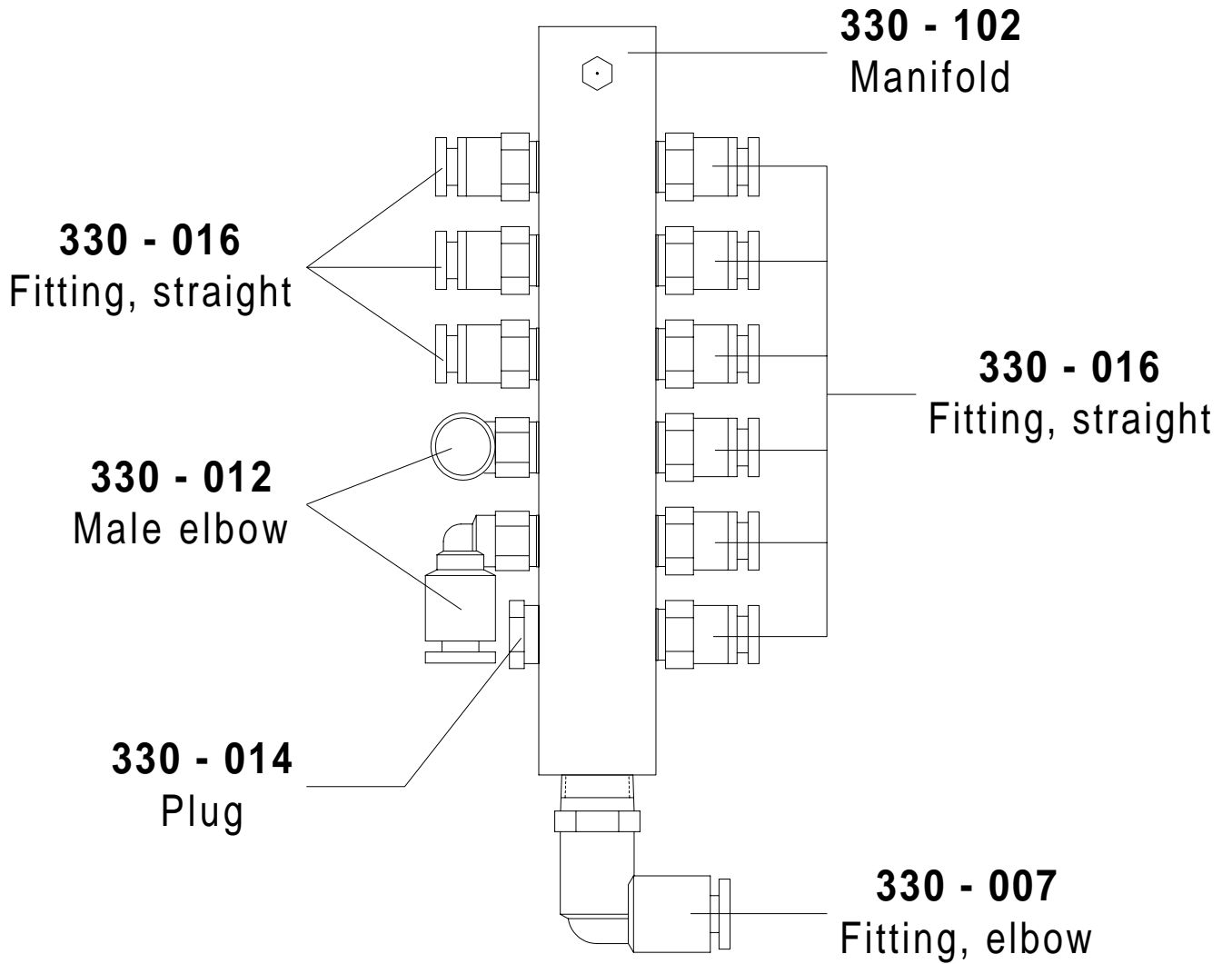


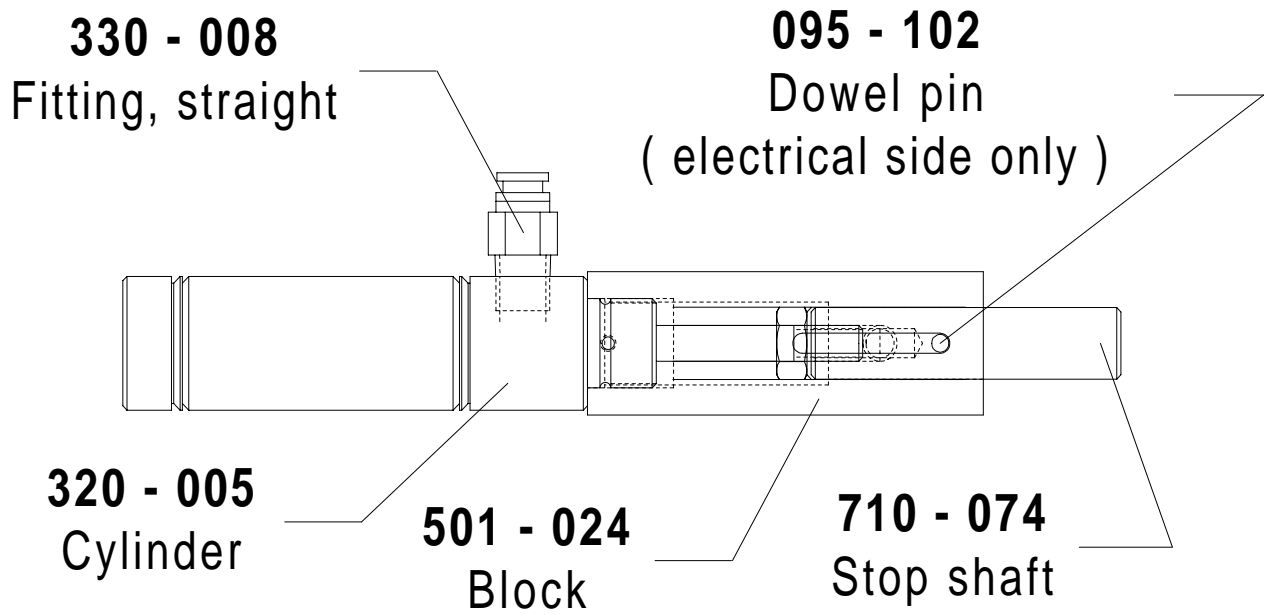


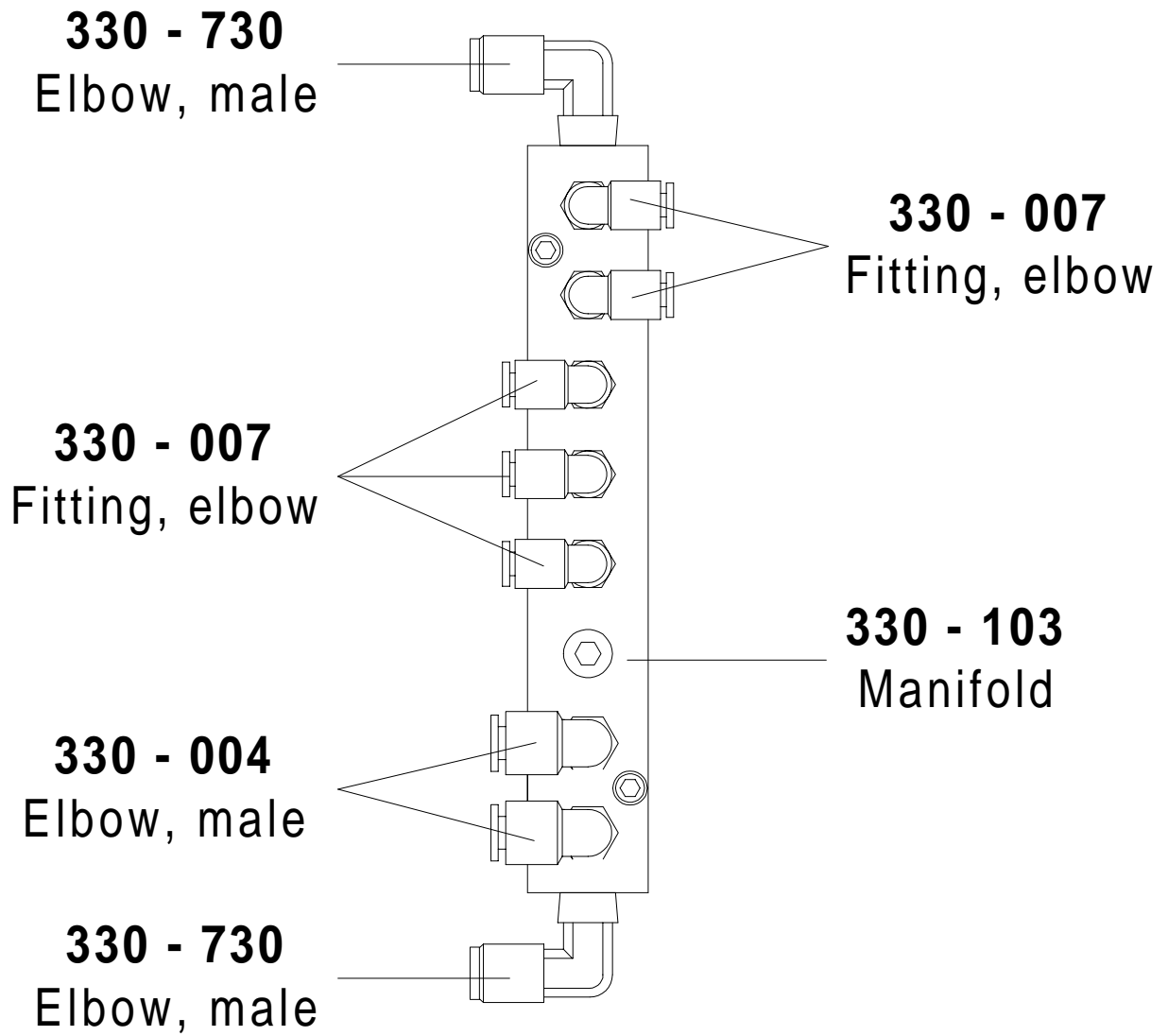


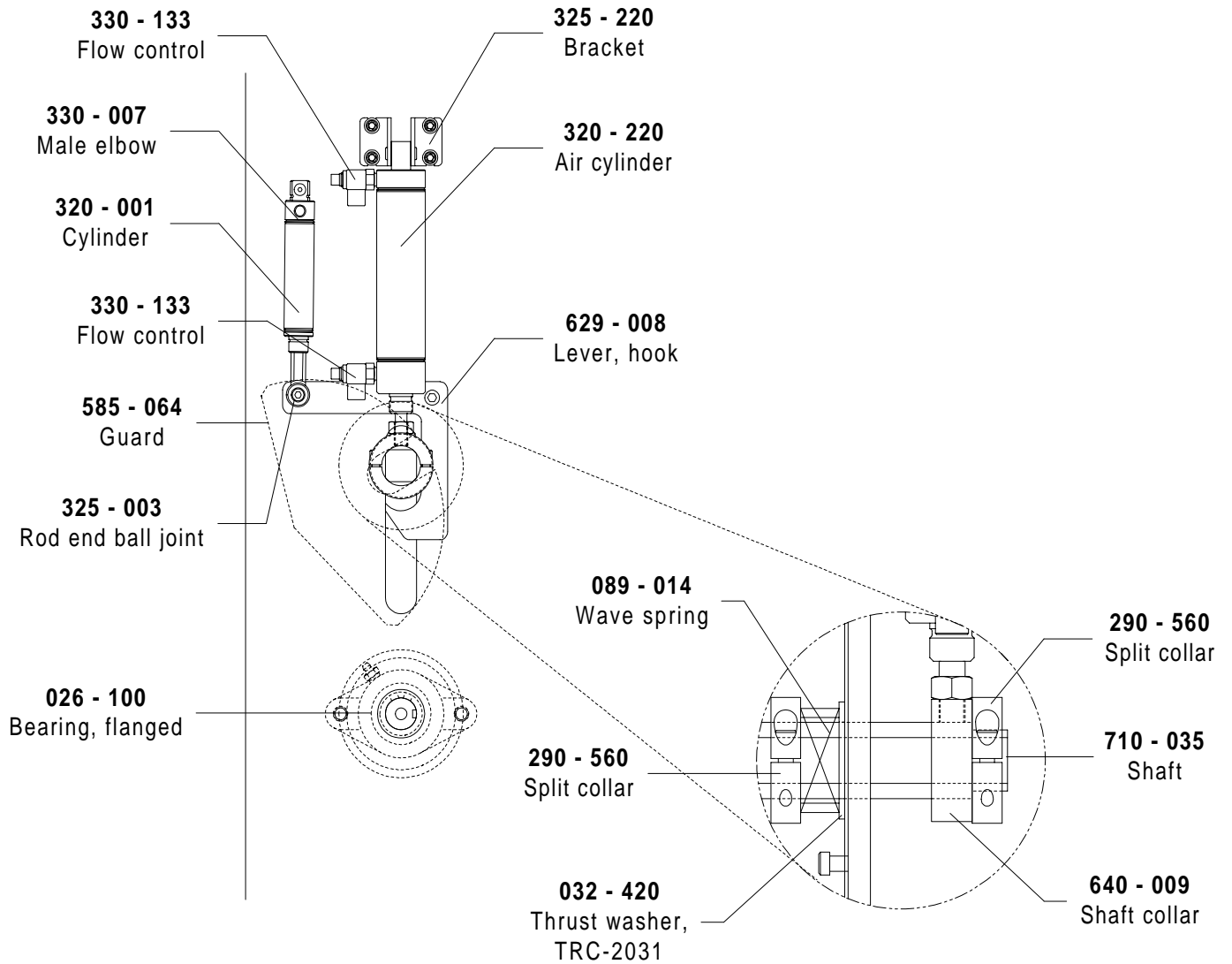


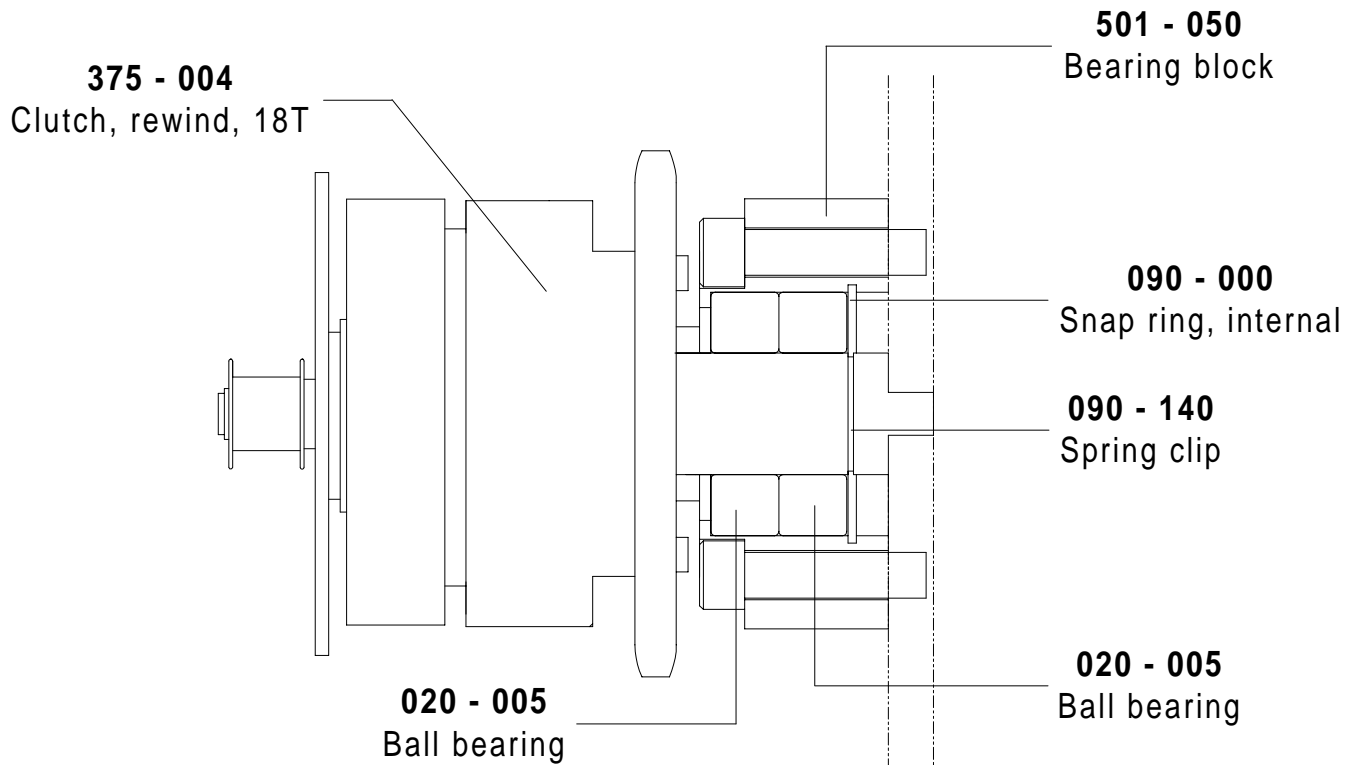






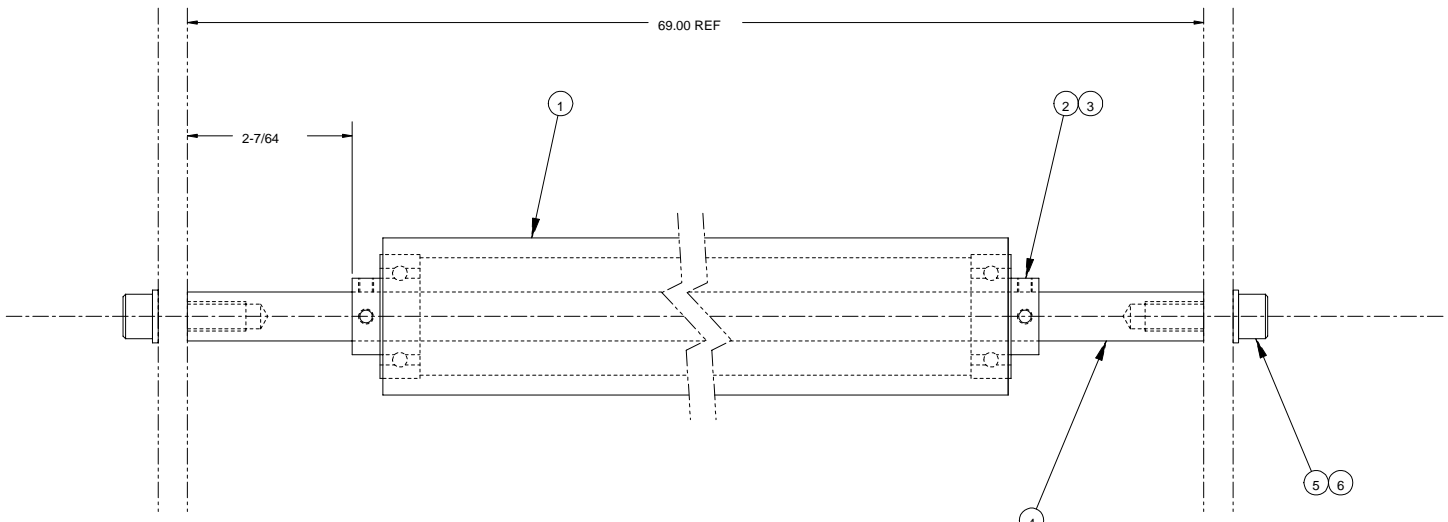






REQ'D	DESCRIPTION	PART NO.	ITEM
1	-	620-405	1
2	BEARING, IDLER	020-100	2
4	SET SCREW, 10-32 X 3/16 LG	-	3
1	-	710-110	4
2	WASHER, LOCK, 3/8	-	5
2	-	-	6

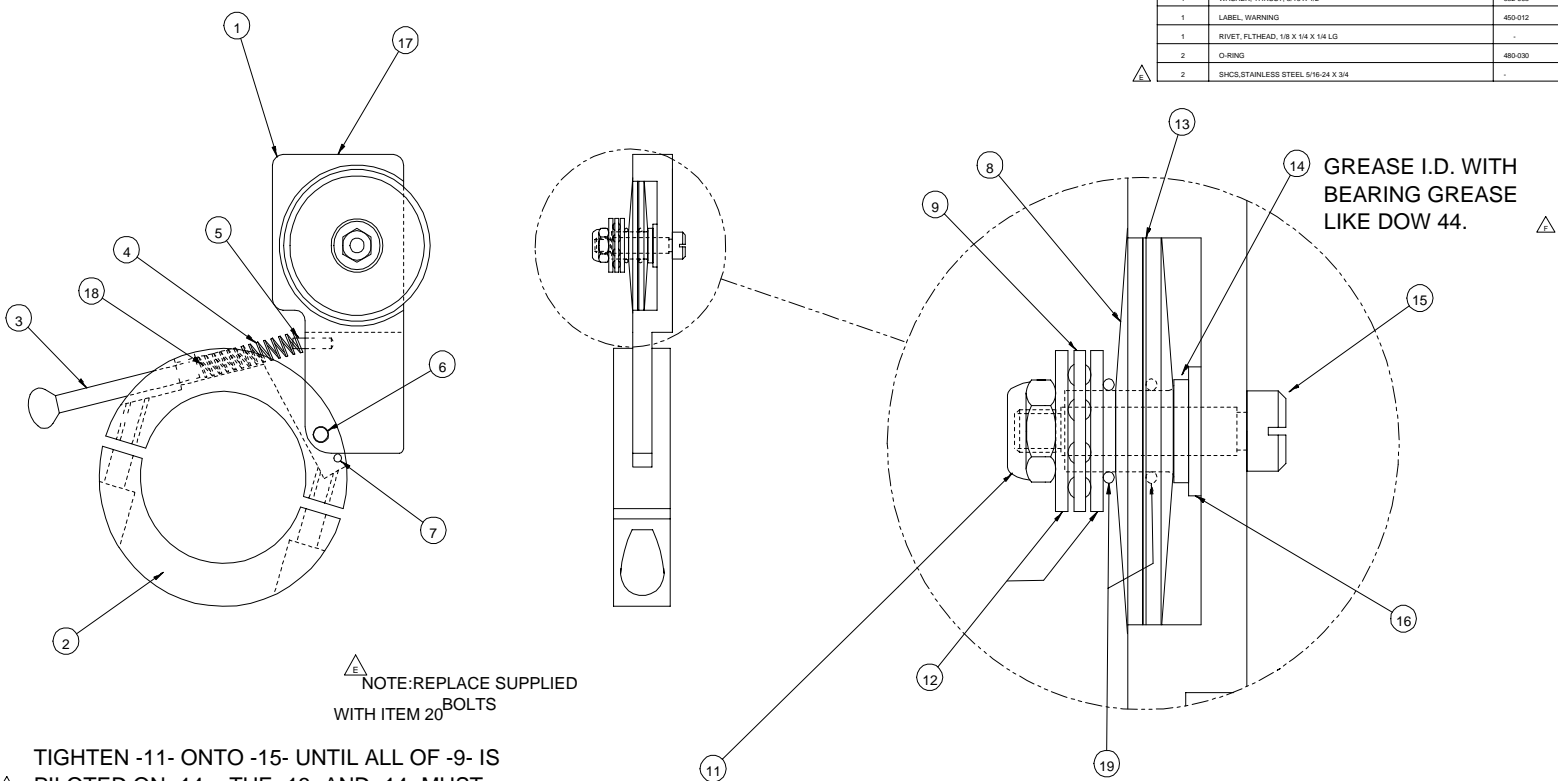
PROPRIETARY
 GBC PRO-TECH CLAIMS PROPRIETARY RIGHTS TO THE MATERIAL DISCLOSED ON THIS DRAWING. IT IS ISSUED IN CONFIDENCE FOR ENGINEERING INFORMATION ONLY AND SHALL NOT BE REPRODUCED, COPIED OR DISCLOSED IN WHOLE OR IN PART, OR USED FOR MANUFACTURE OR FOR ANY OTHER PURPOSE WITHOUT WRITTEN PERMISSION FROM GBC PRO-TECH



-005 ASSEMBLY
 1/1

SHEET 1 OF 1		UNLESS OTHERWISE SPECIFIED TOLERANCE		GBC PRO-TECH		4151 Anderson Road, DeForest, Wisconsin 53532 Phone (608) 248-8844 Fax (608) 248-8645	
DIR. AS SHOWN	TOL.	FINISH TO BE		TITLE: IDLER, TENSION, FIXED ORCA III			
XX	F 1/64			DATE	DRAWN BY	SCALE	SIZE
X	P .050			5-28-94		1:1	C
XX	P .020			RELEASED	P.R.		001-005
XXX	P .010	ANGLES P 10					
XXX	P .005						

REQ'D	DESCRIPTION	PART NO.	ITEM
1	ARM, SLITTER	740-008	1
1	COLLAR, INFEED SLITTER	740-052	2
1	SCREW, THUMB	505-010	3
1	SPRING, TENSION	089-150	4
1	ROLL PIN, 1/8 X 1/2 LG	095-100	5
1	DOWEL PIN, 3/16 X 1/2 LG	095-140	6
1	ROLL PIN, 3/32 X 5/8 LG	095-120	7
2	WASHER, CONCAVE	740-007	8
1	BEARING, THRUST, 5/16 X 5/8	032-003	9
△	-	-	10
1	NUT, NYLOCK, 9/32	-	11
2	WASHER, THRUST, 5/16 X 5/8	032-004	12
1	BLADE, SLITTER, CIRCULAR	475-001	13
1	FLANGED BUSHING, STEEL	040-037	14
△	-	-	15
△	STRIP, 3/16 X 3/4	050-032	16
1	WASHER, THRUST, 3/16 X 1/2	032-005	16
1	LABEL, WARNING	450-012	17
1	RIVET, FLTHREAD, 1/8 X 1/4 X 1/4 LG	-	18
2	O-RING	480-030	19
△	-	-	20
2	SHCS, STAINLESS STEEL, 5/16-24 X 3/4	-	20



△ NOTE: REPLACE SUPPLIED BOLTS WITH ITEM 20

TIGHTEN -11- ONTO -15- UNTIL ALL OF -9- IS PILOTTED ON -14-. THE -13- AND -14- MUST ROTATE FREELY TOGETHER ON -15-.

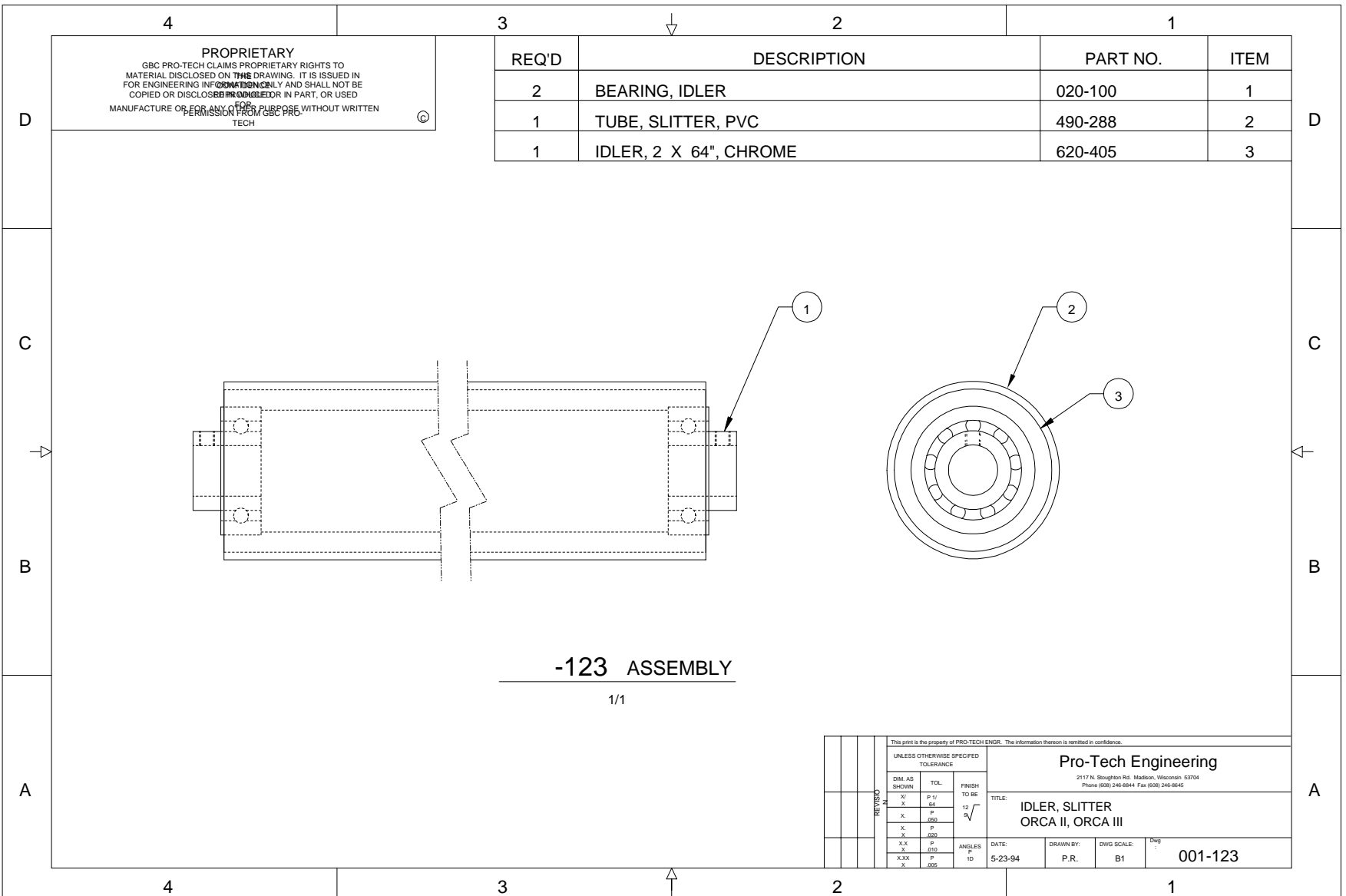
△ BLUE LOCTITE -11- TO -15-.

3270	3006	2591	1122	1013	0667	0442
REV	REV	REV	REV	REV	REV	REV
G	F	E	D	C	B	A

Pro-Tech Engineering
 2117 N. Stoughton Rd. Madison, Wisconsin
 Phone: 608-240-8888 Fax: 608-240-8535

TITLE: SLITTER, INFEED
 Q400T
 Q400P

DATE: 05-16-94
 SCALE: 1
 P.R.:
 001-122



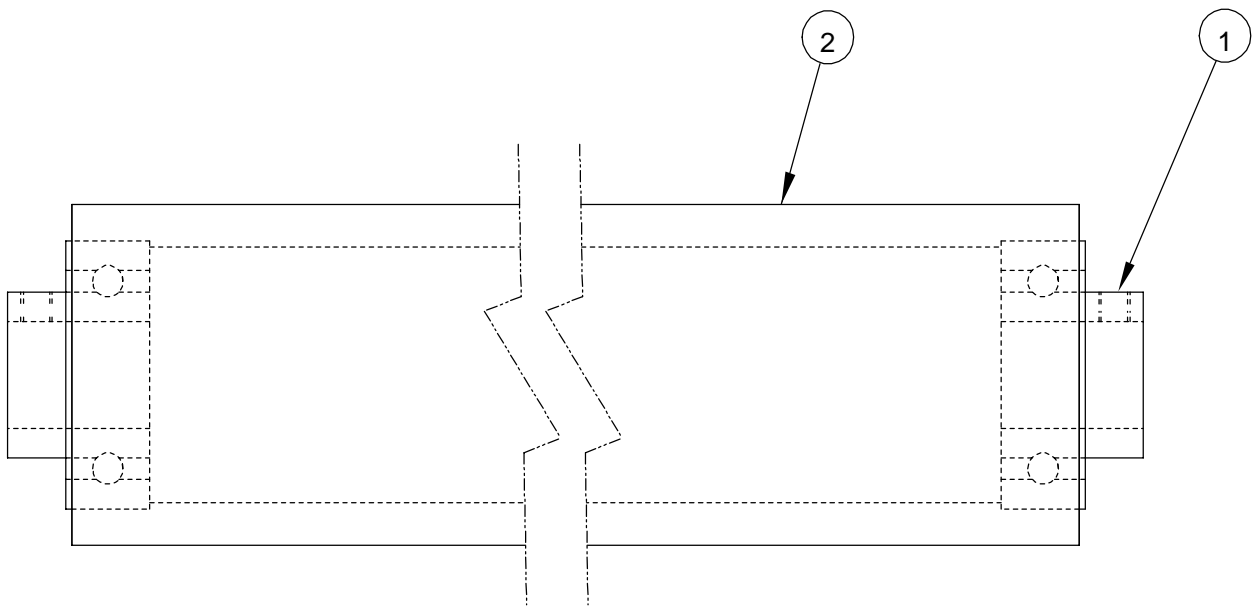
PROPRIETARY
 GBC PRO-TECH CLAIMS PROPRIETARY RIGHTS TO MATERIAL DISCLOSED ON THIS DRAWING. IT IS ISSUED FOR ENGINEERING INFORMATION ONLY AND SHALL NOT BE COPIED OR DISCLOSED IN WHOLE OR IN PART, OR USED FOR ANY OTHER PURPOSE WITHOUT WRITTEN PERMISSION FROM GBC PRO-TECH

REQ'D	DESCRIPTION	PART NO.	ITEM
2	BEARING, IDLER	020-100	1
1	TUBE, SLITTER, PVC	490-288	2
1	IDLER, 2 X 64", CHROME	620-405	3

-123 ASSEMBLY
 1/1

UNLESS OTHERWISE SPECIFIED TOLERANCE			Pro-Tech Engineering 2117 N. Soughton Rd. Madison, Wisconsin 53704 Phone (608) 248-8844 Fax (608) 248-8845	
DIM. AS SHOWN	TOL.	FINISH	TITLE: IDLER, SLITTER ORCA II, ORCA III	
X	F/1	TO BE	DATE: 5-23-94	DRAWN BY: P.R.
X	.64	12	DWG SCALE: B1	001-123
X	.P	√		
X	.050			
X,X	P	ANGLES		
X	.010	10		
X,X	P			
X	.005			

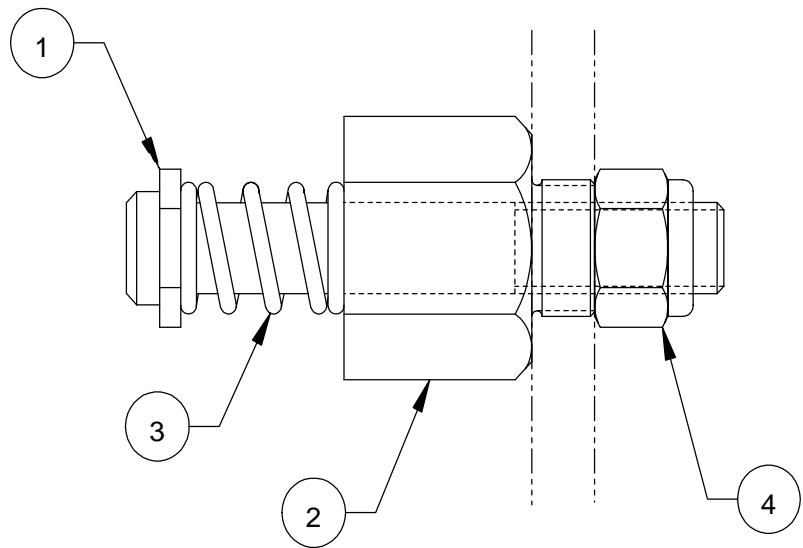
REQ'D	DESCRIPTION	PART NO.	ITEM
2	BEARING, IDLER	020-100	1
1	IDLER, 2 X 64", CHROME	620-405	2



This print is the property of PRO-TECH ENGR. The information thereon is remitted in confidence.							
UNLESS OTHERWISE SPECIFIED TOLERANCE				Pro-Tech Engineering 2117 N. Stoughton Rd. Madison, Wisconsin 53704 Phone (608) 246-8844 Fax (608) 246-8645			
REVISION	DIM. AS SHOWN	TOL.	FINISH TO BE 12 5√	TITLE: ASSY, IDLER			
	X/	P 1/		ORCA II, ORCA III			
	X	64					
	X.	P					
	X.	.050					
X.	P						
X.	.020						
X.X	P						
X	.010						
X.XX	P						
X	.005						
		ANGLES P 1D		DATE: 1-10-95	DRAWN BY: K.L.	DWG SCALE: A1	Dwg : 001-226

REQ'D	DESCRIPTION	PART NO.	ITEM
1	BOLT, STANDOFF, REMOVABLE IDLER	645-009	1
1	STANDOFF, IDLER, HEX	755-033	2
1	SPRING, COMPRESSION	089-140	3
1	NUT, NYLOCK, 1/2-13	-	4

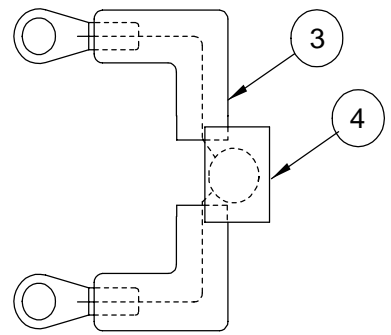
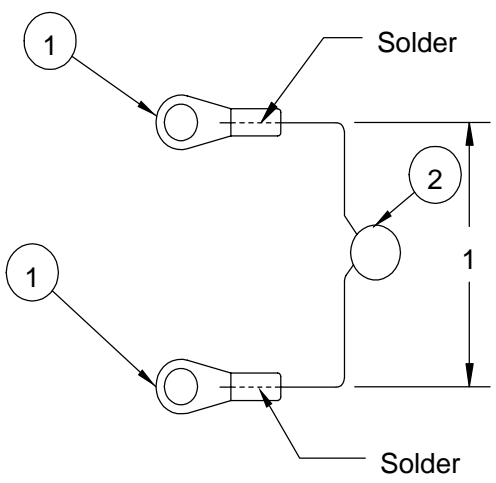
PROPRIETARY
 GBC PRO-TECH CLAIMS PROPRIETARY RIGHTS TO THE
 MATERIAL DISCLOSED ON THIS DRAWING. IT IS ISSUED IN CONFIDENCE
 FOR ENGINEERING INFORMATION ONLY AND SHALL NOT BE REPRODUCED,
 COPIED OR DISCLOSED IN WHOLE OR IN PART, OR USED FOR
 MANUFACTURE OR FOR ANY OTHER PURPOSE WITHOUT WRITTEN
 PERMISSION FROM GBC PRO-TECH



SHEET 1 OF 1		 4151 Anderson Road, DeForest, Wisconsin 53532 Phone (608) 246-8844 Fax (608) 246-8645	
UNLESS OTHERWISE SPECIFIED TOLERANCE			
DIM. AS SHOWN	TOL.	FINISH TO BE 125√	TITLE: ASSY, STANDOFF, REMOVABLE IDLER
X/X	P 1/64		
X.	P .050		
X.X	P .020	ANGLES P 1D	DATE: 5-31-95 RELEASE NO.
X.XX	P .010		DRAWN BY: P.R.
X.XXX	P .005		SCALE: 1:1 SIZE: A Dwg: 001-305

REQ'D	DESCRIPTION	PART NO.	ITEM
2	Connector ring	215-006	1
1	METAL-OXIDE VARISTOR	185-006	2
2	SHRINK TUBE, 1/8 DIA. BY 1.0"	180-425	3
1	SHRINK TUBE, 0.5" DIA. BY 0.85"	180-450	4

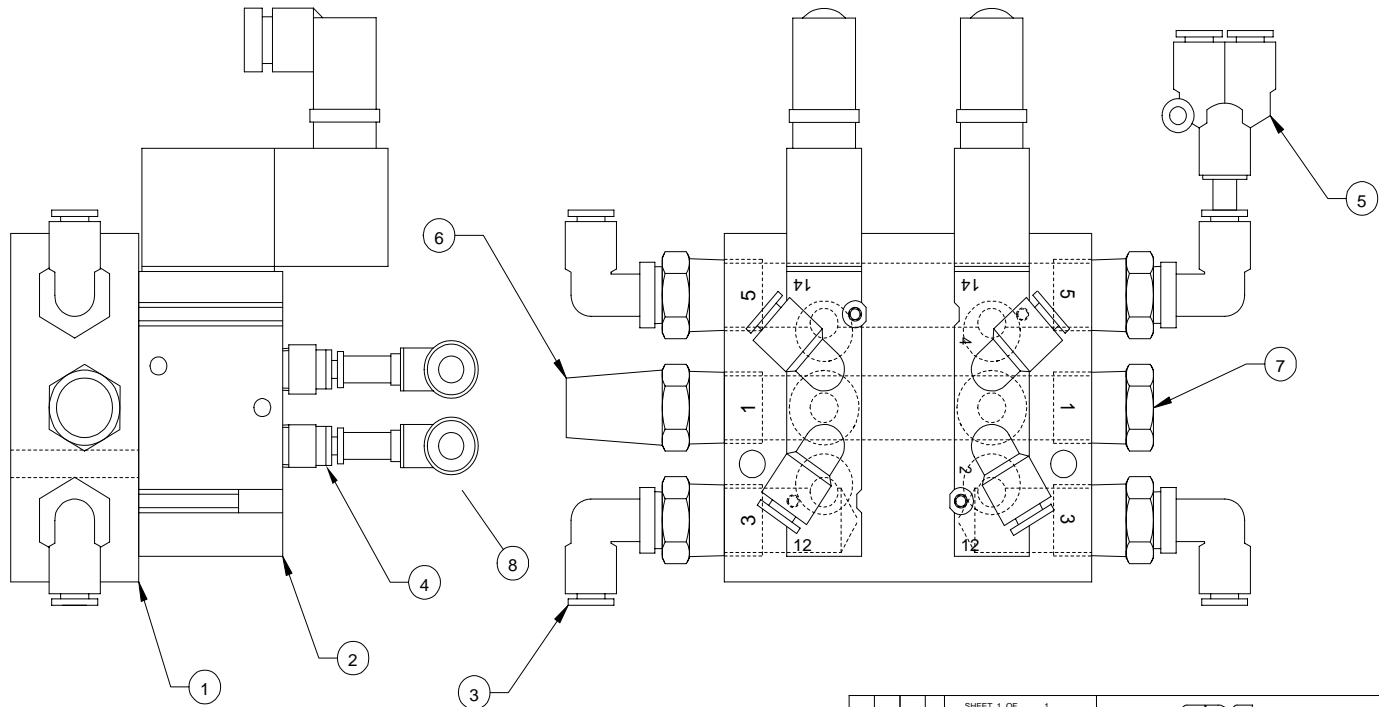
Apply a heat shrink tube after soldering



This print is the property of PRO-TECH ENGR. The information thereon is remitted in confidence.						
UNLESS OTHERWISE SPECIFIED TOLERANCE			Pro-Tech Engineering 2117 N. Stoughton Rd. Madison, Wisconsin 53704 Phone (608) 246-8844 Fax (608) 246-8645			
DIM. AS SHOWN	TOL.	FINISH TO BE				
X/X	P 1/64	125√				
X.	P .050					
X.X	P .020					
X.XX	P .010	ANGLES P 1 D	DATE:	DRAWN BY:	DWG SCALE:	Dwg:
X.XXX	P .005		3-26-96	HZ	A1	001-342

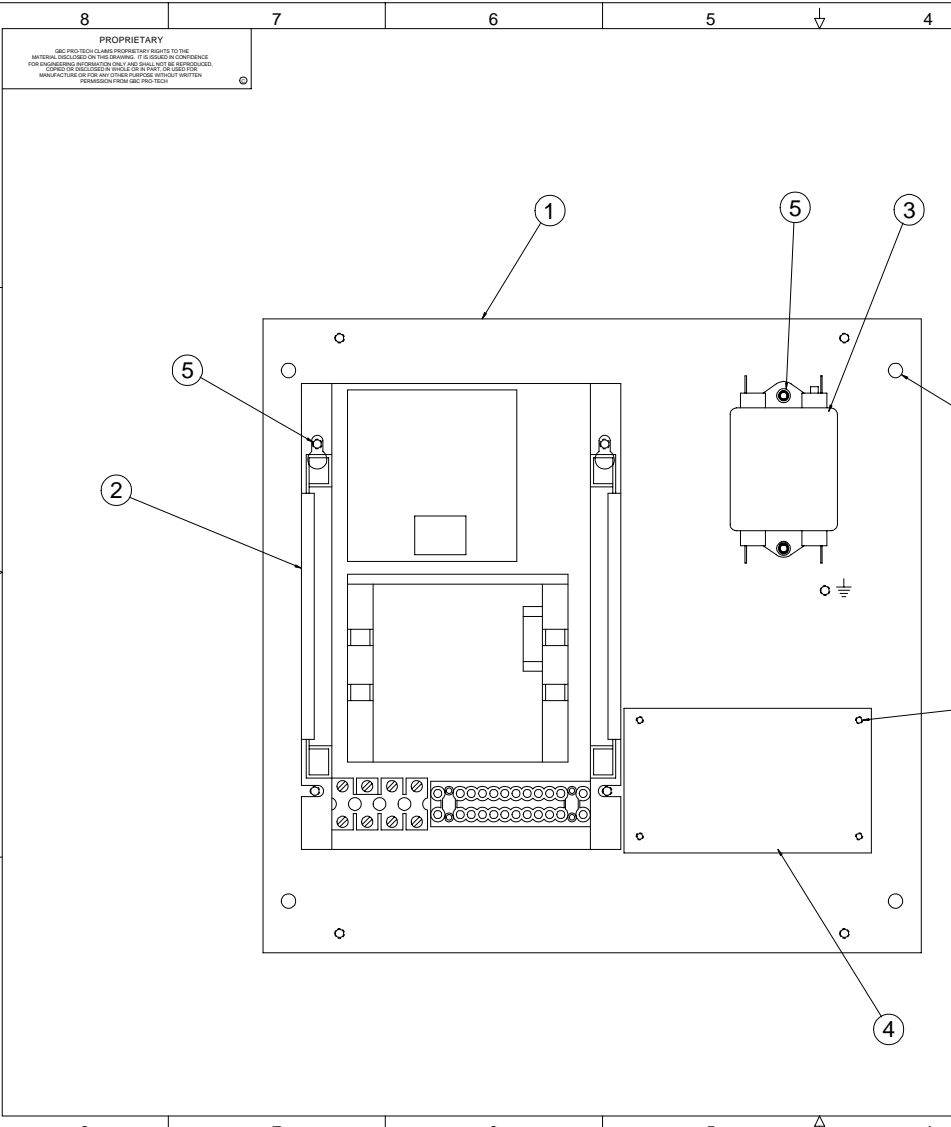
REQ'D	DESCRIPTION	PART NO.	ITEM
1	MANIFOLD, 2 STATION, MAC VALVE	350-160	1
2	SOLENOID, SINGLE, MAC VALVE	350-162	2
4	MALE ELBOW, SMC # KQL07-36S	330-312	3
4	MALE CONNECTOR, SMC # KQH07-34S	330-314	4
1	PLUG-IN "Y", SMC # KQU07-99	330-316	5
1	MUFFLER, ARROW, 3/8" NPT	330-285	6
1	PLUG, 3/8 " NPT	330-287	7
4	MALE ELBOW, SMC, KQL07-99	330-300	8

PROPRIETARY
 GBC PRO-TECH CLAIMS PROPRIETARY RIGHTS TO THE MATERIAL DISCLOSED ON THIS DRAWING. IT IS ISSUED IN CONFIDENCE FOR ENGINEERING INFORMATION ONLY AND SHALL NOT BE REPRODUCED, COPIED OR DISCLOSED IN WHOLE OR IN PART, OR USED FOR MANUFACTURE OR FOR ANY OTHER PURPOSE WITHOUT WRITTEN PERMISSION FROM GBC PRO-TECH



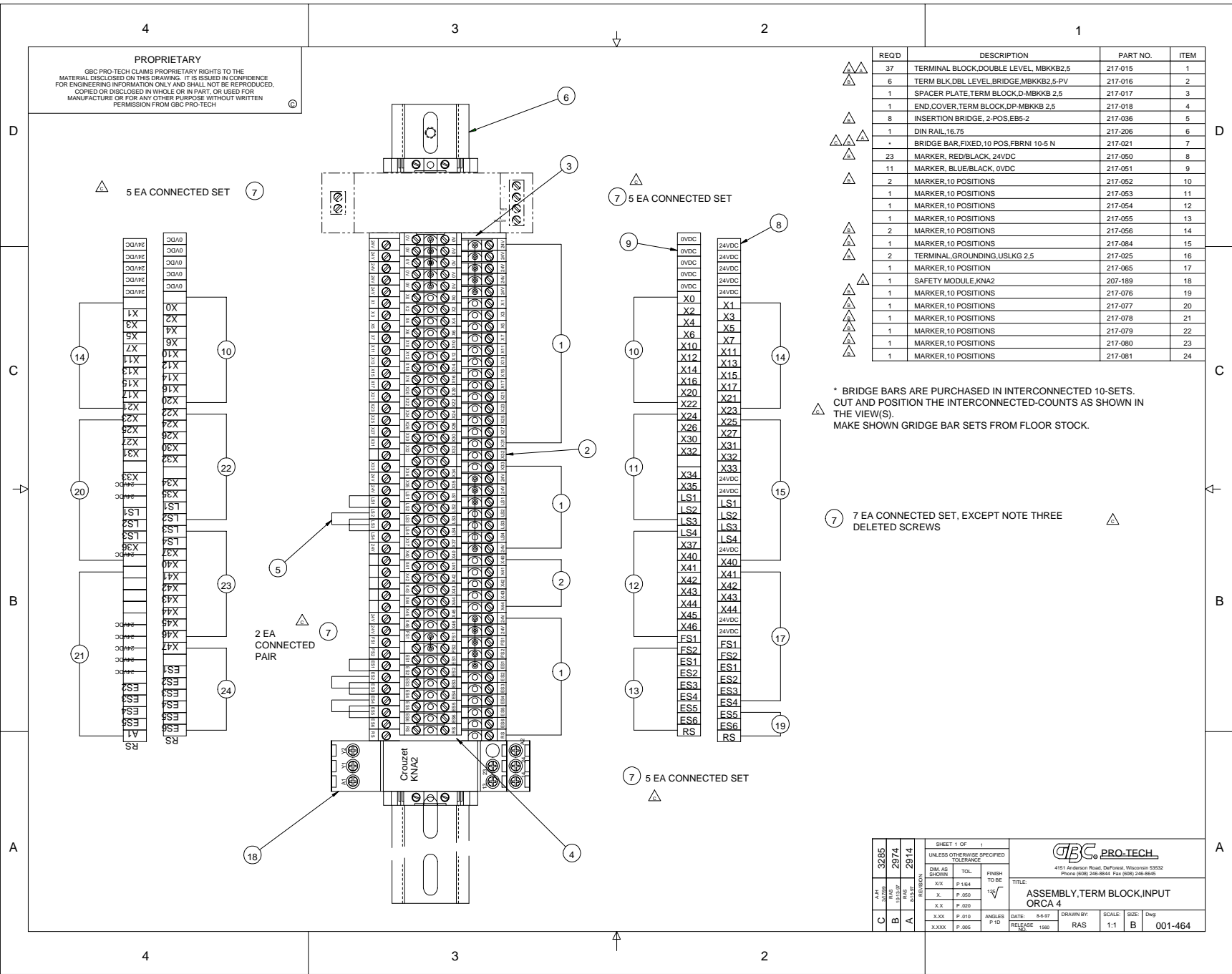
SHEET 1 OF 1		UNLESS OTHERWISE SPECIFIED TOLERANCE			
DM. AS SHOWN	TOL.	FINISH TO BE	4151 Anderson Road, DeForest, Wisconsin 53532 Phone (608) 246-8844 Fax (608) 246-8645		
XX	P. 1/64	125	TITLE:		
X	P. .050		ASSEMBLY, VALVE, CONTROL		
X.X	P. .020		ORCA IV		
X.XX	P. .010	ANGLES P. 1D	DATE: 12-2-96	DRAWN BY: TFB	SCALE: 1/1
X.XXX	P. .005		RELEASE NO. 1021		SIZE: B
					Dwg: 001-420

REQ'D	DESCRIPTION	PART NO.	ITEM
1	PANEL,MOTOR CONTROLLER	670-031	1
1	MOTOR CONTROLLER	220-105	2
1	FILTER LINE	185-032	3
1	SIGNAL ISOLATOR BOARD	220-104	4
6	SHCS,10-32 X 1/2	-	5
4	BHCS,#6-32 X 5/8	-	6
4	SHCS,1/4-20 X 1/2	-	7



PROPRIETARY
 GBC PRO-TECH CLAIMS PROPRIETARY RIGHTS TO THE
 MATERIALS SHOWN ON THIS DRAWING. IT IS REQUESTED NO CONFERENCE
 FOR REPRODUCING INFORMATION ONLY AND SHALL NOT BE REPRODUCED
 WITHOUT THE WRITTEN PERMISSION OF GBC PRO-TECH.
 MANUFACTURED AND ASSEMBLED IN THE UNITED STATES OF AMERICA
 PERMITTED BY GBC PRO-TECH

REV	DATE	DESCRIPTION
1	10/10/99	ASSEMBLY MOTOR CONTROLLER ORCA 4
2	10/10/99	REVISION
3	10/10/99	REVISION
4	10/10/99	REVISION
5	10/10/99	REVISION
6	10/10/99	REVISION
7	10/10/99	REVISION
8	10/10/99	REVISION



PROPRIETARY
 GBC PRO-TECH CLAIMS PROPRIETARY RIGHTS TO THE MATERIAL DISCLOSED ON THIS DRAWING. IT IS ISSUED IN CONFIDENCE FOR ENGINEERING INFORMATION ONLY AND SHALL NOT BE REPRODUCED, COPIED OR DISCLOSED IN WHOLE OR IN PART, OR USED FOR MANUFACTURE OR FOR ANY OTHER PURPOSE WITHOUT WRITTEN PERMISSION FROM GBC PRO-TECH

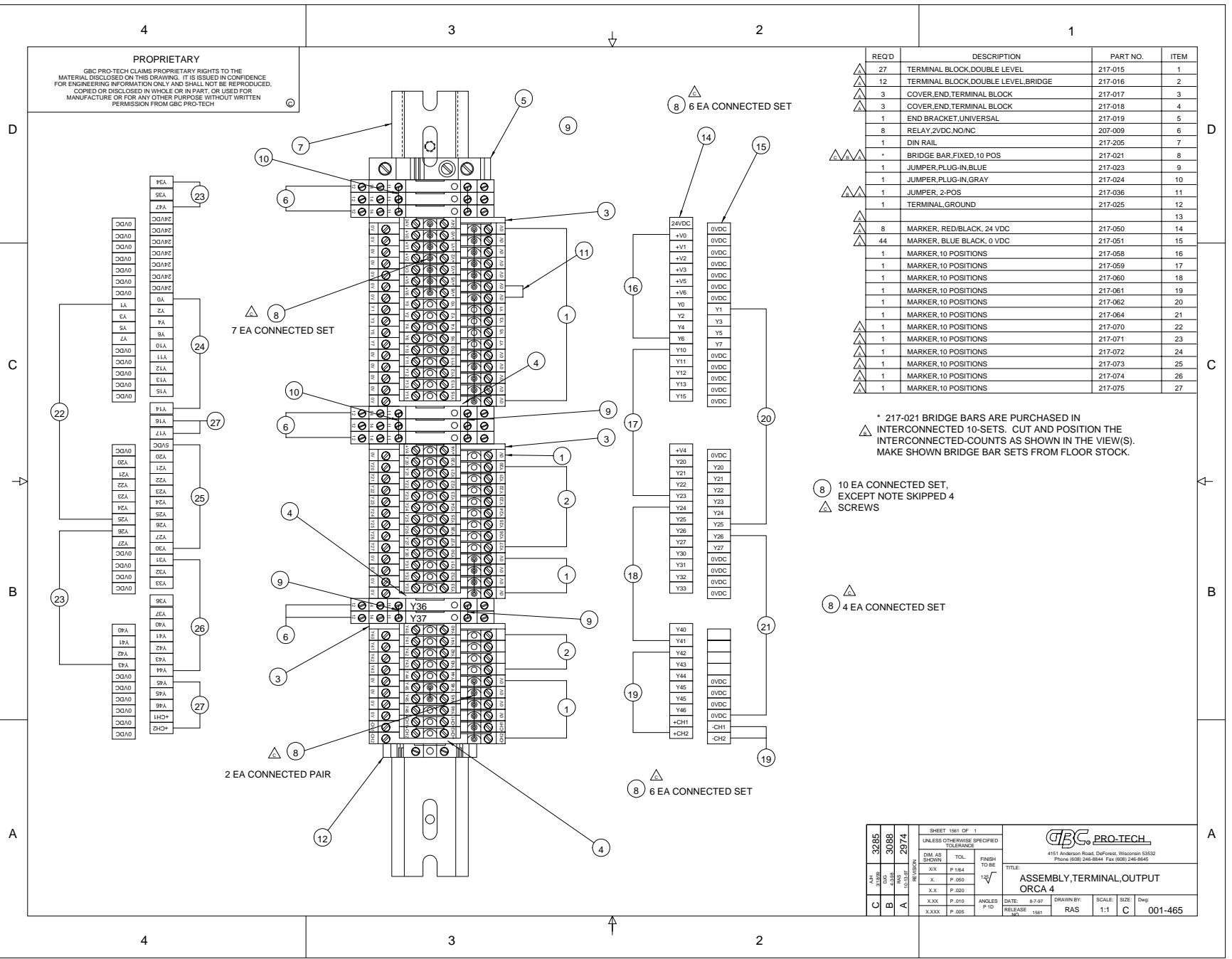
REQD	DESCRIPTION	PART NO.	ITEM
37	TERMINAL BLOCK,DOUBLE LEVEL, MBKKB2.5	217-015	1
6	TERM BLK,DBL LEVEL, BRIDGE,MBKKB2.5-PV	217-016	2
1	SPACER PLATE,TERM BLOCK,D-MBKKB 2.5	217-017	3
1	END COVER,TERM BLOCK,DP-MBKKB 2.5	217-018	4
8	INSERTION BRIDGE, 2-POS,EB5-2	217-036	5
1	DIN RAIL,16.75	217-206	6
*	BRIDGE BAR,FIXED,10 POS,FBRN1 10-5 N	217-021	7
23	MARKER, RED/BLACK, 24VDC	217-050	8
11	MARKER, BLUE/BLACK, 0VDC	217-051	9
2	MARKER,10 POSITIONS	217-052	10
1	MARKER,10 POSITIONS	217-053	11
1	MARKER,10 POSITIONS	217-054	12
1	MARKER,10 POSITIONS	217-055	13
2	MARKER,10 POSITIONS	217-056	14
1	MARKER,10 POSITIONS	217-084	15
2	TERMINAL,GROUNDING,USLKG 2.5	217-025	16
1	MARKER,10 POSITION	217-065	17
1	SAFETY MODULE,KNA2	207-189	18
1	MARKER,10 POSITIONS	217-076	19
1	MARKER,10 POSITIONS	217-077	20
1	MARKER,10 POSITIONS	217-078	21
1	MARKER,10 POSITIONS	217-079	22
1	MARKER,10 POSITIONS	217-080	23
1	MARKER,10 POSITIONS	217-081	24

* BRIDGE BARS ARE PURCHASED IN INTERCONNECTED 10-SETS. CUT AND POSITION THE INTERCONNECTED-COUNTS AS SHOWN IN THE VIEW(S). MAKE SHOWN BRIDGE BAR SETS FROM FLOOR STOCK.

7 EA CONNECTED SET, EXCEPT NOTE THREE DELETED SCREWS

SHEET 1 OF 1		UNLESS OTHERWISE SPECIFIED TOLERANCE		FINISH TO BE	
DIM AS SHOWN	TOL.	X.X	P.154	15°	
X.X	P.050	X.X	P.020		
X.XX	P.010				
X.XXX	P.005				

DATE: 8-8-97	DRAWN BY: RAS	SCALE: 1:1	SIZE: B	Draw: 001-464
RELEASE: 1560				



PROPRIETARY
 GBC PRO-TECH CLAIMS PROPRIETARY RIGHTS TO THE MATERIAL DISCLOSED ON THIS DRAWING. IT IS ISSUED IN CONFIDENCE FOR ENGINEERING INFORMATION ONLY AND SHALL NOT BE REPRODUCED, COPIED OR DISCLOSED IN WHOLE OR IN PART, OR USED FOR MANUFACTURE OR FOR ANY OTHER PURPOSE, WITHOUT WRITTEN PERMISSION FROM GBC PRO-TECH

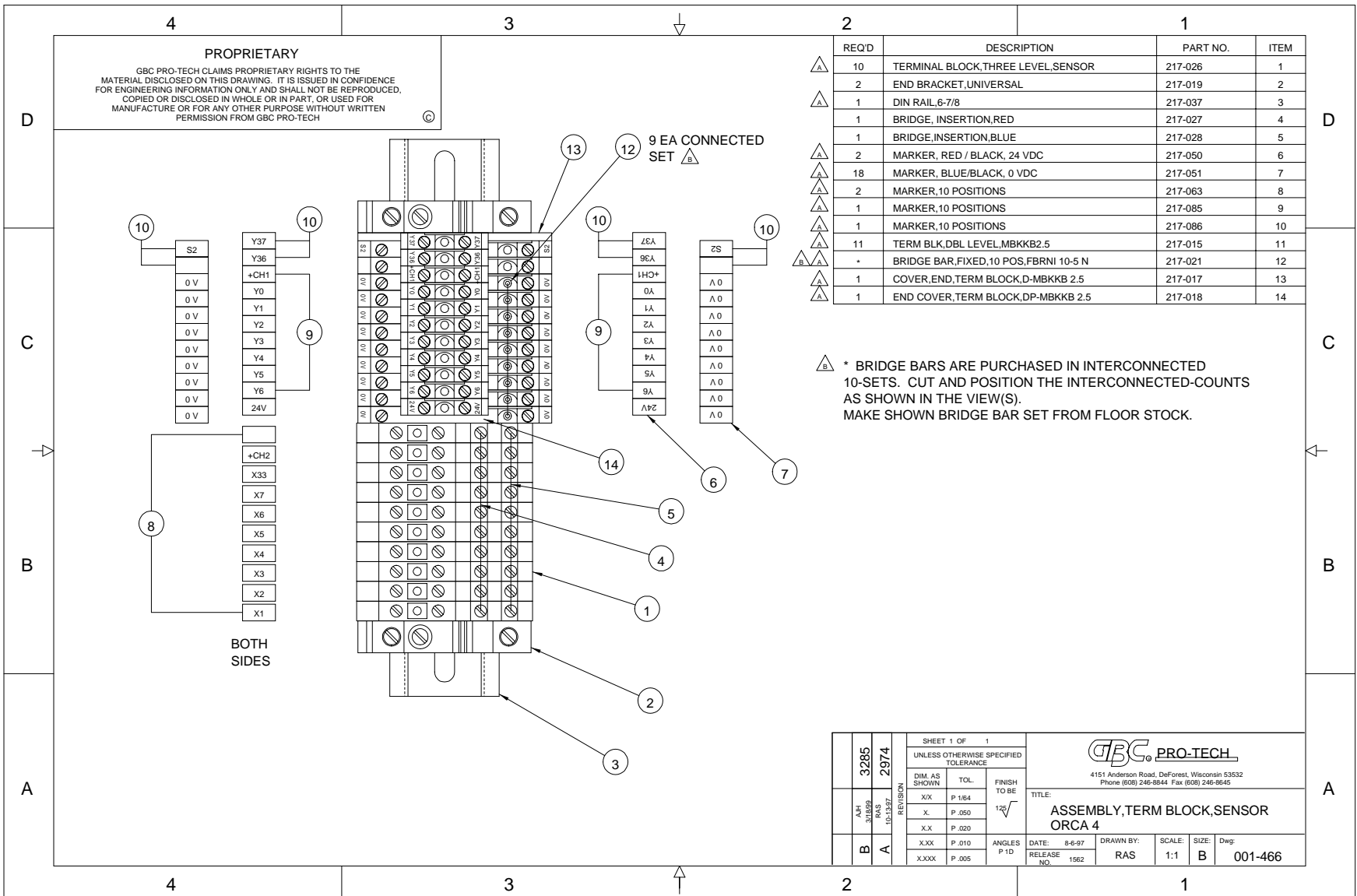
REQ'D	DESCRIPTION	PART NO.	ITEM	
△	27	TERMINAL BLOCK,DOUBLE LEVEL	217-015	1
△	12	TERMINAL BLOCK,DOUBLE LEVEL,BRIDGE	217-016	2
△	3	COVER,END,TERMINAL BLOCK	217-017	3
△	3	COVER,END,TERMINAL BLOCK	217-018	4
△	1	END BRACKET,UNIVERSAL	217-019	5
△	8	RELAY,2VDC,NO/NC	207-009	6
△	1	DIN RAIL	217-205	7
△	*	BRIDGE BAR,FIXED,10 POS	217-021	8
△	1	JUMPER,PLUG-IN,BLUE	217-023	9
△	1	JUMPER,PLUG-IN,GRAY	217-024	10
△	1	JUMPER, 2-POS	217-036	11
△	1	TERMINAL,GROUND	217-025	12
△				13
△	8	MARKER, RED/BLACK, 24 VDC	217-050	14
△	44	MARKER, BLUE BLACK, 0 VDC	217-051	15
△	1	MARKER, 10 POSITIONS	217-058	16
△	1	MARKER, 10 POSITIONS	217-059	17
△	1	MARKER, 10 POSITIONS	217-060	18
△	1	MARKER, 10 POSITIONS	217-061	19
△	1	MARKER, 10 POSITIONS	217-062	20
△	1	MARKER, 10 POSITIONS	217-064	21
△	1	MARKER, 10 POSITIONS	217-070	22
△	1	MARKER, 10 POSITIONS	217-071	23
△	1	MARKER, 10 POSITIONS	217-072	24
△	1	MARKER, 10 POSITIONS	217-073	25
△	1	MARKER, 10 POSITIONS	217-074	26
△	1	MARKER, 10 POSITIONS	217-075	27

* 217-021 BRIDGE BARS ARE PURCHASED IN INTERCONNECTED 10-SETS. CUT AND POSITION THE INTERCONNECTED-COUNTS AS SHOWN IN THE VIEW(S). MAKE SHOWN BRIDGE BAR SETS FROM FLOOR STOCK.

8 10 EA CONNECTED SET, EXCEPT NOTE SKIPPED 4 SCREWS

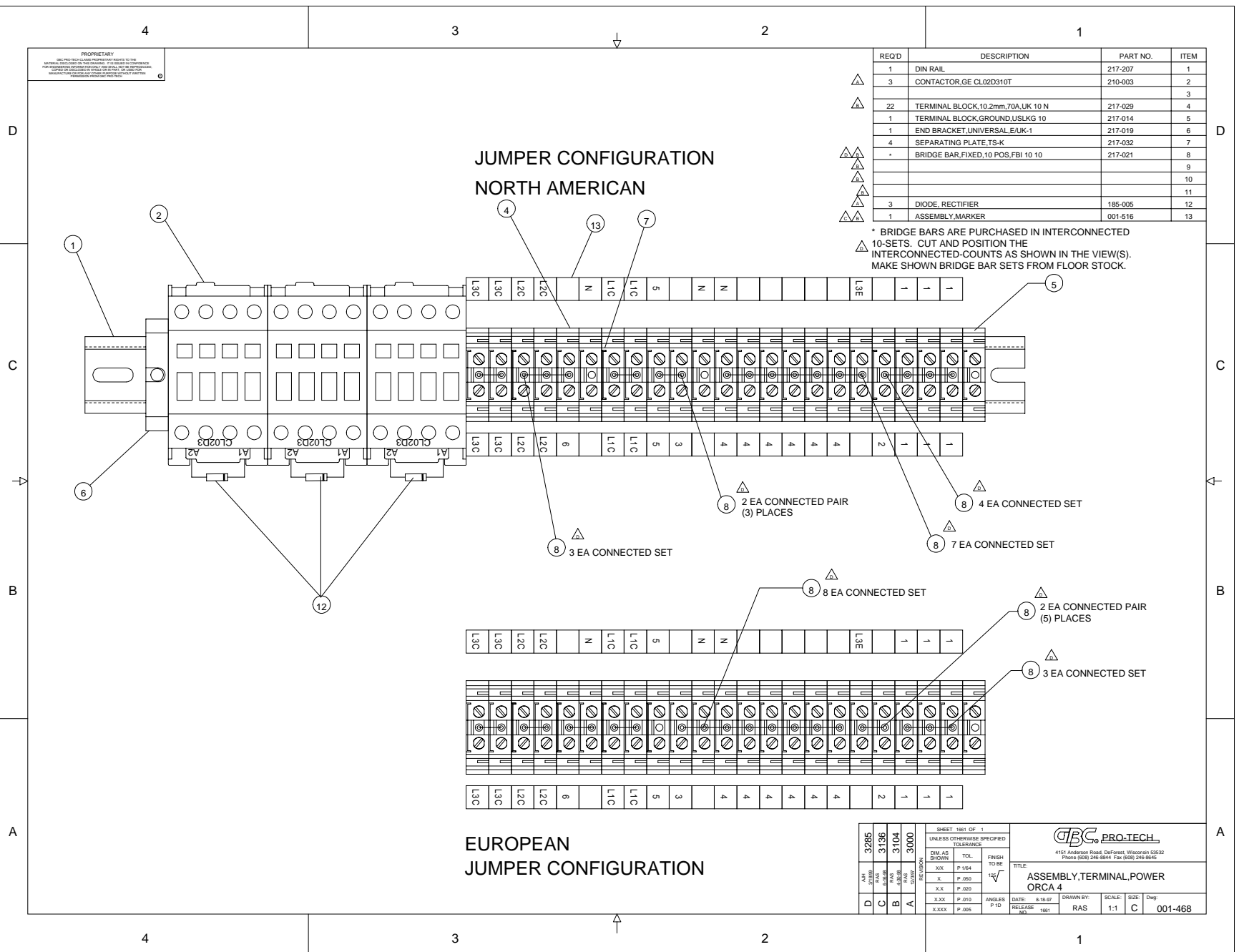
8 4 EA CONNECTED SET

3285		SHEET 181 OF 1		UNLESS OTHERWISE SPECIFIED TOLERANCE		GBC PRO-TECH	
3088		DIM AS SHOWN		TOL. P.184		451 Anderson Road, Danville, Wisconsin 53512 Phone (608) 246-8844 Fax (608) 246-8545	
2974		X.X		P.050		FINISH TO BE	
A		X.X		P.020		TITLE	
C		X.XX		P.010		ASSEMBLY,TERMINAL,OUTPUT	
		X.XXX		P.005		ORCA 4	
		ANGLES		DATE: 8-7-97		DRAWN BY:	
		P.10		RELEASE 1991		SCALE: 1:1	
						SIZE: C	
						Dwg: 001-465	



REQ'D	DESCRIPTION	PART NO.	ITEM
1	DIN RAIL	217-207	1
3	CONTACTOR,GE CL02D310T	210-003	2
			3
22	TERMINAL BLOCK,10.2mm,70A,UK 10 N	217-029	4
1	TERMINAL BLOCK,GROUND,US,1KG 10	217-014	5
1	END BRACKET,UNIVERSAL,E/UK-1	217-019	6
4	SEPARATING PLATE,TS-K	217-032	7
*	BRIDGE BAR,FIXED,10 POS,FBI 10 10	217-021	8
			9
			10
			11
3	DIODE, RECTIFIER	185-005	12
1	ASSEMBLY MARKER	001-516	13

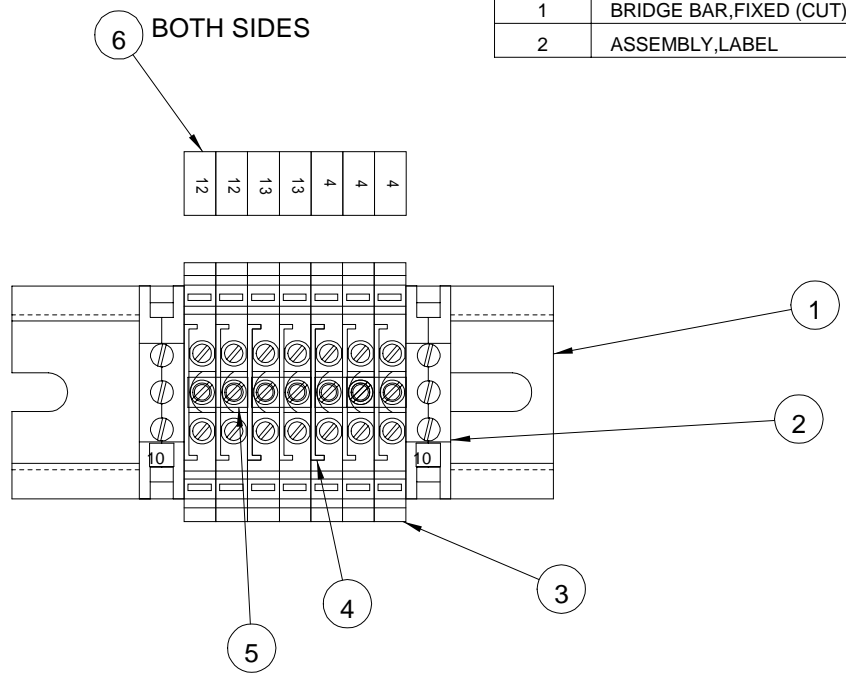
* BRIDGE BARS ARE PURCHASED IN INTERCONNECTED 10-SETS. CUT AND POSITION THE INTERCONNECTED-COUNTS AS SHOWN IN THE VIEW(S). MAKE SHOWN BRIDGE BAR SETS FROM FLOOR STOCK.



5282	0000	SHEET 1661 OF 1		 4151 Anderson Road, DeForest, Wisconsin 53532 Phone (908) 246-8844 Fax (908) 246-8849
3616	7013	UNLESS OTHERWISE SPECIFIED TOLERANCE		
0	0	DIM AS SHOWN .XX P .154 .X P .050 .XX P .020 .XXX P .010 .XXX P .005		
D	V	FINISH TO BE	1/2√	TITLE: ASSEMBLY,TERMINAL,POWER ORCA 4 DATE: 8-15-97 RELEASE: 1991 DRAWN BY: RAS SCALE: 1:1 SIZE: C Dwg: 001-468

REQ'D	DESCRIPTION	PART NO.	ITEM
1	DIN RAIL	217-003	1
2	GROUND TERMINAL,USLKG2.5	217-025	2
7	TERMINAL,UK2.5N	217-038	3
2	SEPARATION PLATE	217-039	4
1	BRIDGE BAR,FIXED (CUT)	217-040	5
2	ASSEMBLY,LABEL	217-082	6

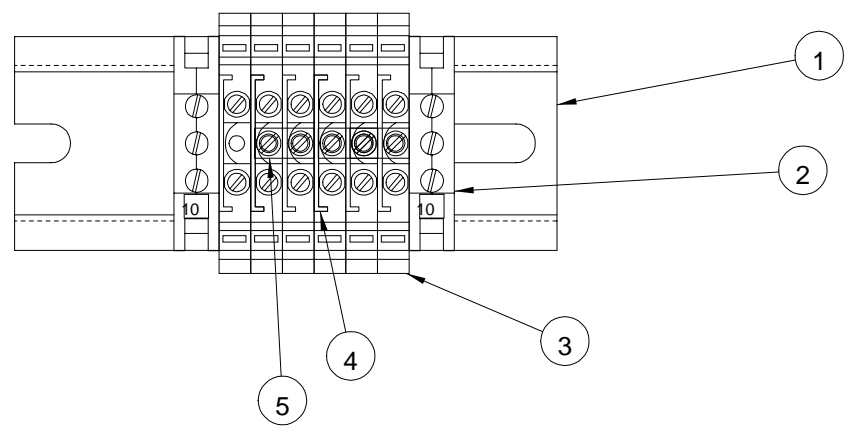
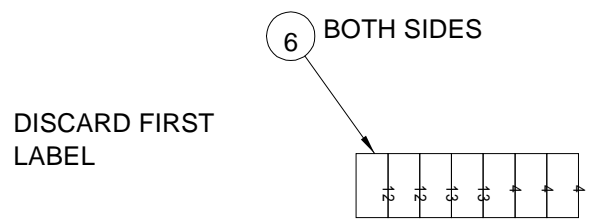
PROPRIETARY
 GBC PRO-TECH CLAIMS PROPRIETARY RIGHTS TO THE MATERIAL DISCLOSED ON THIS DRAWING. IT IS ISSUED IN CONFIDENCE FOR ENGINEERING INFORMATION ONLY AND SHALL NOT BE REPRODUCED, COPIED OR DISCLOSED IN WHOLE OR IN PART, OR USED FOR MANUFACTURE OR FOR ANY OTHER PURPOSE WITHOUT WRITTEN PERMISSION FROM GBC PRO-TECH



SHEET 1 OF 1			 4151 Anderson Road, DeForest, Wisconsin 53532 Phone (608) 246-8844 Fax (608) 246-8645				
UNLESS OTHERWISE SPECIFIED TOLERANCE							TITLE:
DIM. AS SHOWN	TOL.	FINISH TO BE	DATE:	DRAWN BY:	SCALE:	SIZE:	Dwg:
X/X	P 1/64	125√	10-16-97	RAS	1:1	A	001-474
X.	P .050		RELEASE NO. 1776				
X.X	P .020	ANGLES P 1D					
X.XX	P .010						
X.XXX	P .005						

REQ'D	DESCRIPTION	PART NO.	ITEM
1	DIN RAIL	217-003	1
2	GROUND TERMINAL,USLKG2.5	217-025	2
6	TERMINAL,UK2.5N	217-038	3
2	SEPARATION PLATE	217-039	4
1	BRIDGE BAR,FIXED (CUT)	217-040	5
2	ASSEMBLY,LABEL	217-082	6


PROPRIETARY
 GBC PRO-TECH CLAIMS PROPRIETARY RIGHTS TO THE MATERIAL DISCLOSED ON THIS DRAWING. IT IS ISSUED IN CONFIDENCE FOR ENGINEERING INFORMATION ONLY AND SHALL NOT BE REPRODUCED, COPIED OR DISCLOSED IN WHOLE OR IN PART, OR USED FOR MANUFACTURE OR FOR ANY OTHER PURPOSE WITHOUT WRITTEN PERMISSION FROM GBC PRO-TECH



SHEET 1 OF 1			 4151 Anderson Road, DeForest, Wisconsin 53532 Phone (608) 246-8844 Fax (608) 246-8645	
UNLESS OTHERWISE SPECIFIED TOLERANCE				
DIM. AS SHOWN	TOL.	FINISH TO BE	TITLE: ASSEMBLY,TERM,COOLING FAN DRV SIDE,ORCA 4	
X.X	P .1/64	125√		
X.	P .050		DATE: 10-16-97 RELEASE NO. 1775	
X.X	P .020			
X.XX	P .010	ANGLES P 1D	DRAWN BY: RAS	SCALE: 1:1
X.XXX	P .005		SIZE: A	Dwg: 001-475

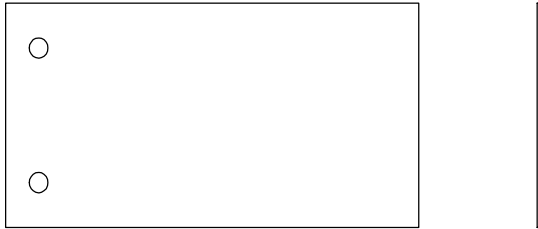
PROPRIETARY
 GBC PRO-TECH CLAIMS PROPRIETARY RIGHTS TO THE MATERIAL DISCLOSED ON THIS DRAWING. IT IS ISSUED IN CONFIDENCE FOR ENGINEERING INFORMATION ONLY AND SHALL NOT BE REPRODUCED, COPIED OR DISCLOSED IN WHOLE OR IN PART, OR USED FOR MANUFACTURE OR FOR ANY OTHER PURPOSE WITHOUT WRITTEN PERMISSION FROM GBC PRO-TECH

REQ'D	DESCRIPTION	PART NO.	ITEM
1	TOWEL,WHITE	475-950	1
1	ZIPPY KNIFE	475-620	2
1	ALLEN WRENCH SET	475-230	3
4	LEVELING PAD	470-101	4
△	3 FUSE, 6 AMP	186-017	5
1	TAPE MEASURE	475-100	6
1	RUBBER CEMENT PICK-UP	930320	7
△	1 STRAIN RELIEF	175-201	8
1	BOX ACCESSORY	475-010	9
△	1 MANUAL, OPERATORS	930-009	10
4	ASSY, SLITTER	001-122	11
△	2 -	475-210	12
△	2 SPACER, UNWIND, WEB	755-059	13

SHEET 1 OF 1		UNLESS OTHERWISE SPECIFIED TOLERANCE		 4151 Anderson Road, DeForest, Wisconsin 53532 Phone (608) 246-8844 Fax (608) 246-8645			
DIM. AS SHOWN	TOL.					FINISH TO BE	
X/X	P 1/64	125√	TITLE: ACCESSORY KIT ORCA IV				
X.	P .050						
X.X	P .020						
X.XX	P .010	ANGLES P 1D	DATE: 10-17-97	DRAWN BY: MAA	SCALE: 1/1	SIZE: A	Dwg: 001-480
X.XXX	P .005		RELEASE NO. 1790				


PROPRIETARY
 GBC PRO-TECH CLAIMS PROPRIETARY RIGHTS TO THE MATERIAL DISCLOSED ON THIS DRAWING. IT IS ISSUED IN CONFIDENCE FOR ENGINEERING INFORMATION ONLY AND SHALL NOT BE REPRODUCED, COPIED OR DISCLOSED IN WHOLE OR IN PART, OR USED FOR MANUFACTURE OR FOR ANY OTHER PURPOSE WITHOUT WRITTEN PERMISSION FROM GBC PRO-TECH

REQ'D	DESCRIPTION	PART NO.	ITEM
1	PART LIST SPE. DOC	001-501.XLS	-
1	TEST AND CALIB.DOC	820-061.DOC	-
1	SCHEMATIC	810-038	-
1	PCB, ENCODER	671-020	-



NOTES:

1. SOLDERING NOT TO EXCEED LIMITS OF SOLDERING TEMPERATURE AND TIME AS SPECIFIED IN UL COMPONENTS BOOK FOR BOARD MANUFACTURER.

			SHEET 1 OF 1			 4151 Anderson Road, DeForest, Wisconsin 53532 Phone (608) 246-8844 Fax (608) 246-8645					
			UNLESS OTHERWISE SPECIFIED TOLERANCE								
REVISION	DIM. AS SHOWN	TOL.	FINISH TO BE	TITLE:							
	X/X	P 1/64									125√
	X.	P .050									
	X.X	P .020	ASSY, PCB, ENCODER, ORCA 4								
	X.XX	P .010	ANGLES P 1D	DATE: 2-11-98		DRAWN BY:	SCALE:	SIZE:	Dwg:		
X.XXX	P .005	RELEASE NO. 1921		HZ	1/1	A	001-501				