

# ***Luxor RECLAIM Clear Acrylic 24" x 24" Clamp-On Sneeze Guard Cubicle Wall Extender***

## **Instruction Manual**



*Provided by*

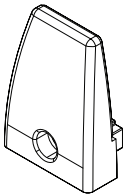
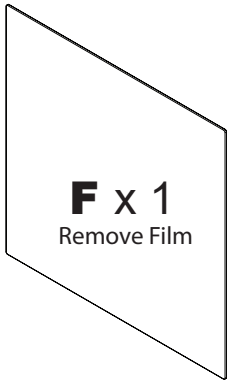
**MyBinding.com**  
*When Image Matters.*

**Call Us at 1-800-944-4573**

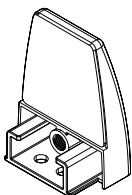
# DIVWT 2 Clamp Wall Top Divider Panel Assembly Guide

## Part List

**Tools Needed:**  
Allen Wrench  
(Included)  
Screw Driver  
(Not Included)



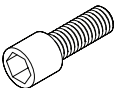
**D x 2**



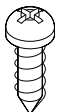
**B x 2**



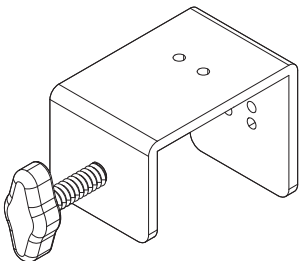
**C x 4**  
M4 x 5mm



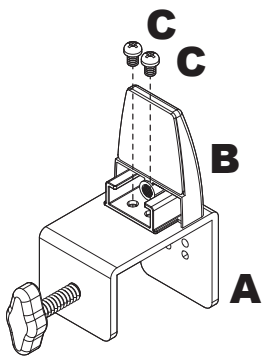
**E x 2**  
M6 x 16mm



**G x 6**  
M4 x 16mm  
Optional Permanent Mount  
Refer to the Back Page

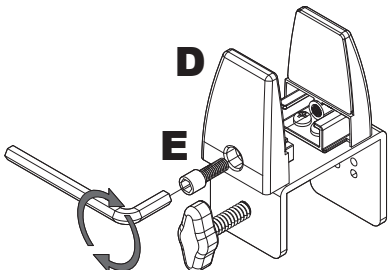


**A x 2**



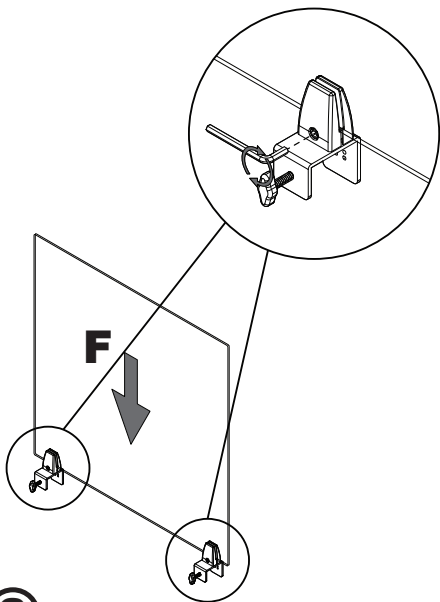
**①**

Attach B to A with Screws C



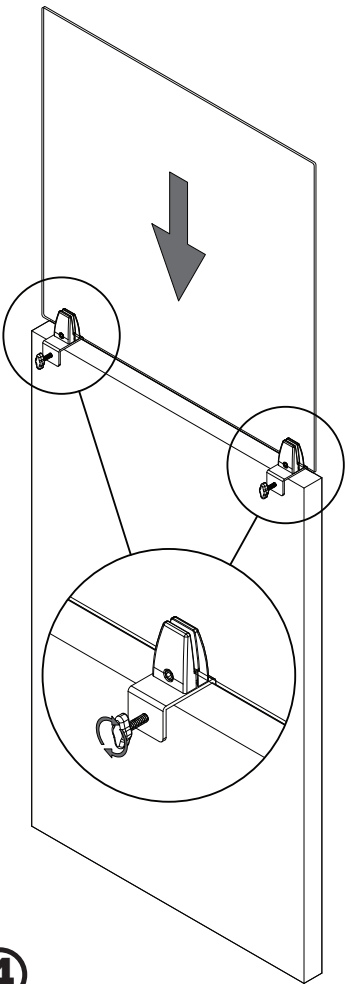
**②**

Attach D with Screw E



**③**

Install F into Assembled Clamps  
Tighten Clamps



**④**

Install Divider Panel onto Wall  
Tighten Clamps to Wall

# DIVWT 2 Clamp Wall Top Divider Panel Assembly Guide

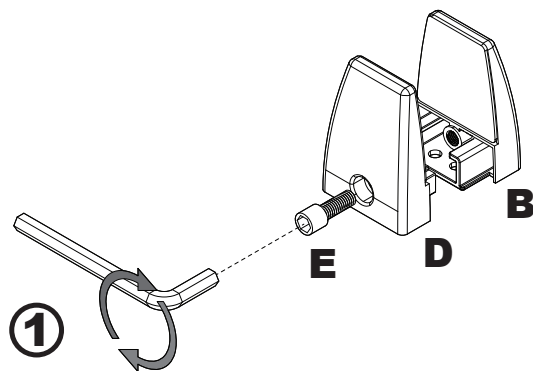
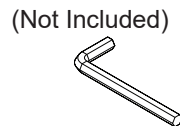
## Optional Permanent Mount

### Tools Needed:

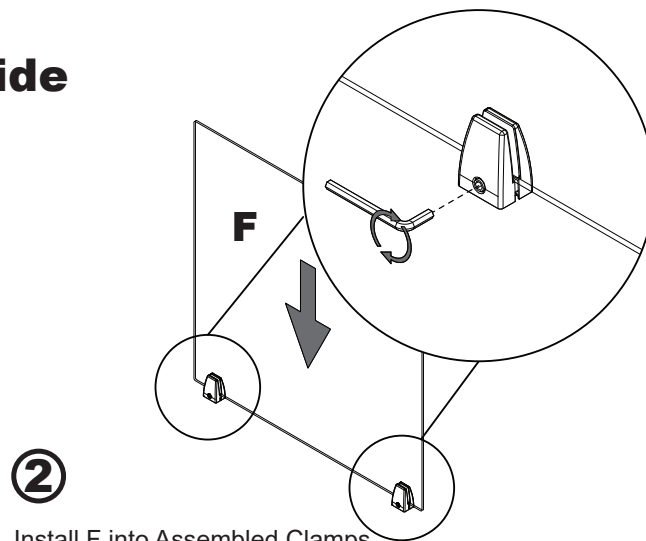
Allen Wrench  
(Included)

Screw Driver  
(Included)

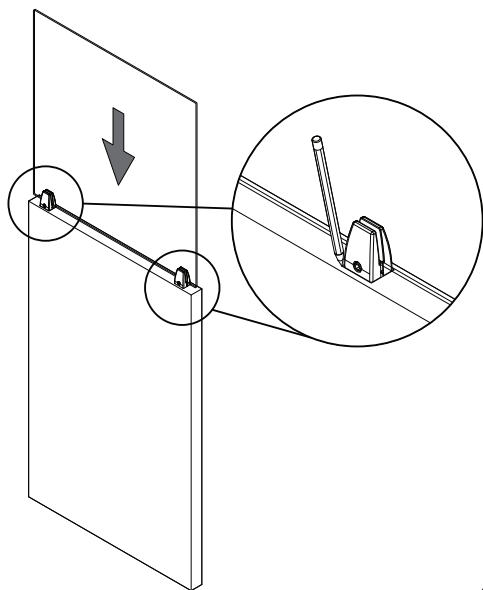
Pencil  
(Not Included)



① Attach D to B with Screw E

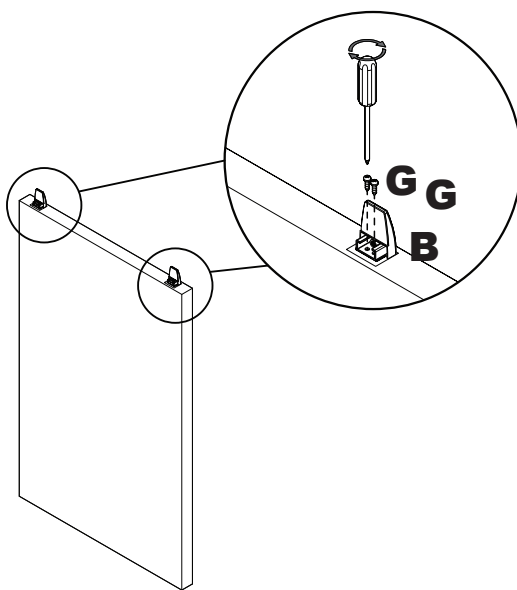


② Install F into Assembled Clamps.  
Tighten Clamps.



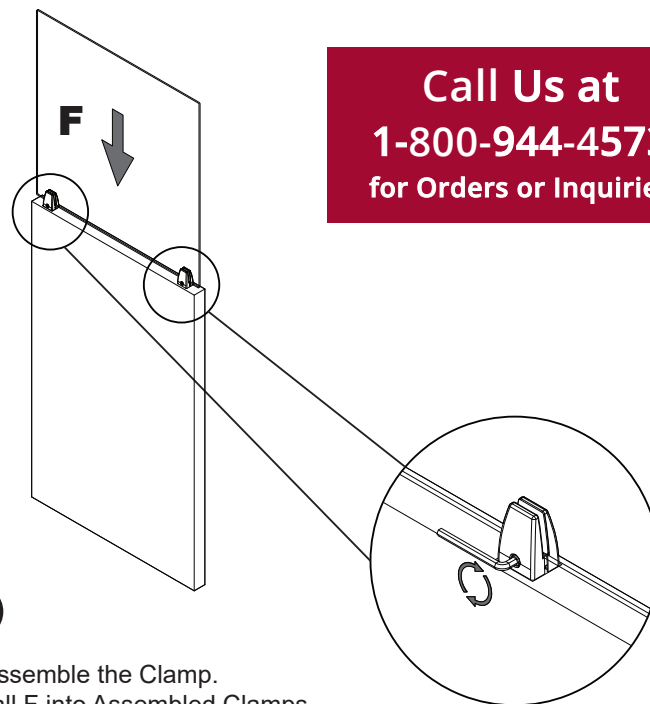
③

With Assistance - Place the Panel Assembly on the Wall and Outline the Clamps with a Pencil.



④

Remove and Disassemble the Panel Assembly. Place Part B on the Wall in the Outline Location and Secure with Screws G.



④

Reassemble the Clamp. Install F into Assembled Clamps. Tighten Clamps.

Call Us at  
**1-800-944-4573**  
for Orders or Inquiries