

Luxor RECLAIM Clear Acrylic 48" x 24" Clamp-On Sneeze Guard Cubicle Wall Extender

Instruction Manual



Provided by

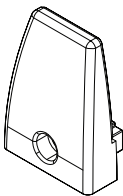
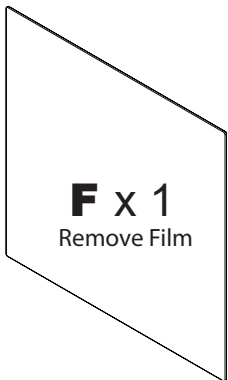
MyBinding.com
When Image Matters.

Call Us at 1-800-944-4573

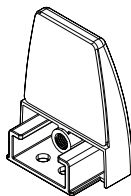
DIVWT 2 Clamp Wall Top Divider Panel Assembly Guide

Part List

Tools Needed:
Allen Wrench
(Included)
Screw Driver
(Not Included)



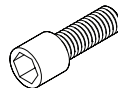
D x 2



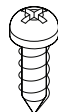
B x 2



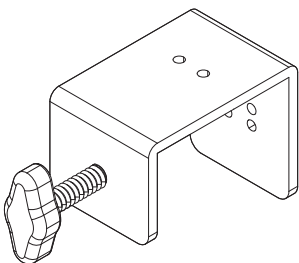
C x 4
M4 x 5mm



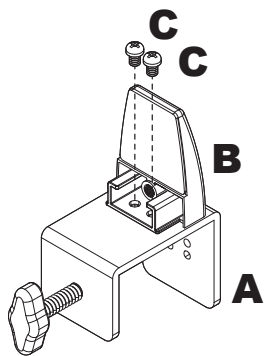
E x 2
M6 x 16mm



G x 6
M4 x 16mm
Optional Permanent Mount
Refer to the Back Page

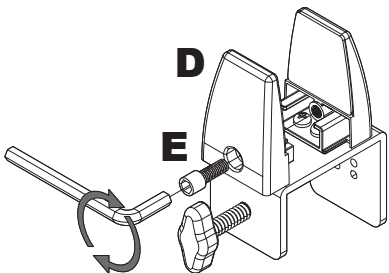


A x 2



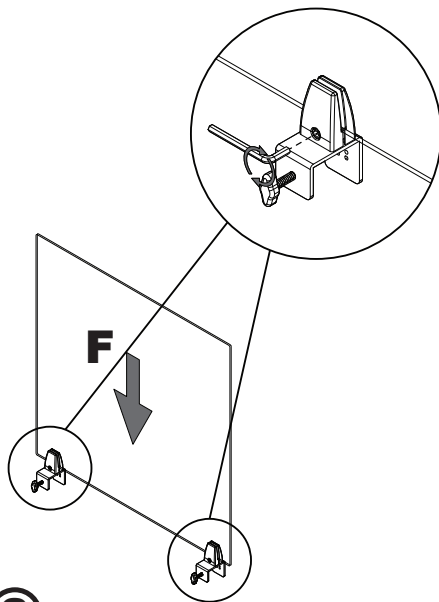
①

Attach B to A with Screws C



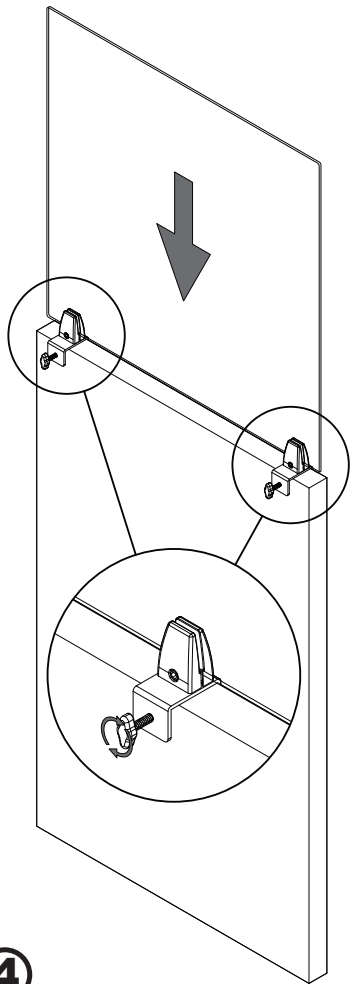
②

Attach D with Screw E



③

Install F into Assembled Clamps
Tighten Clamps



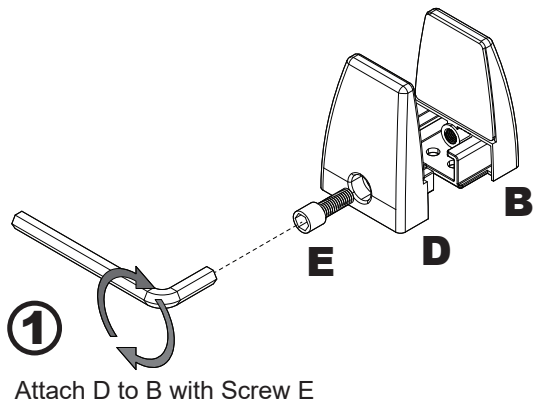
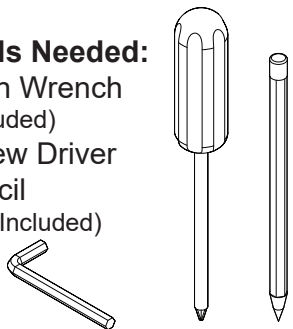
④

Install Divider Panel onto Wall
Tighten Clamps to Wall

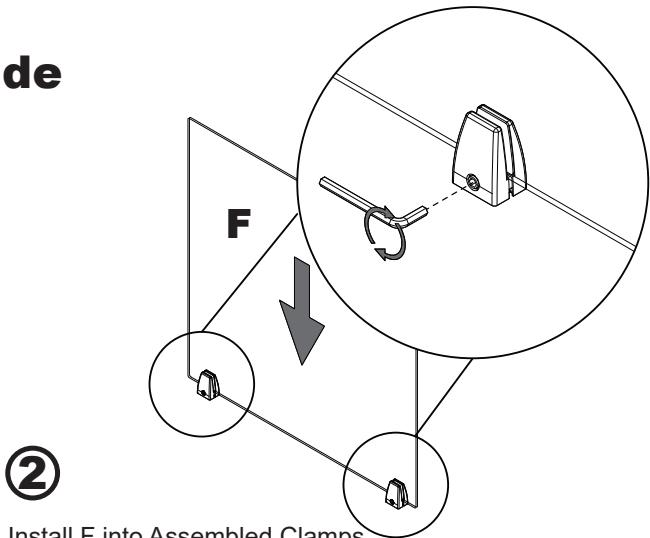
DIVWT 2 Clamp Wall Top Divider Panel Assembly Guide

Optional Permanent Mount

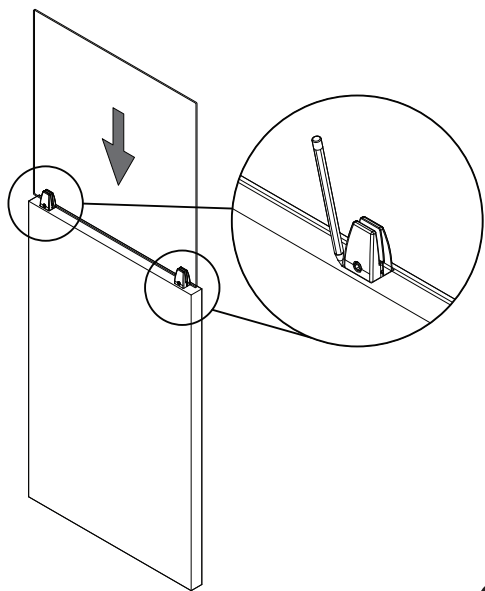
Tools Needed:
Allen Wrench
(Included)
Screw Driver
Pencil
(Not Included)



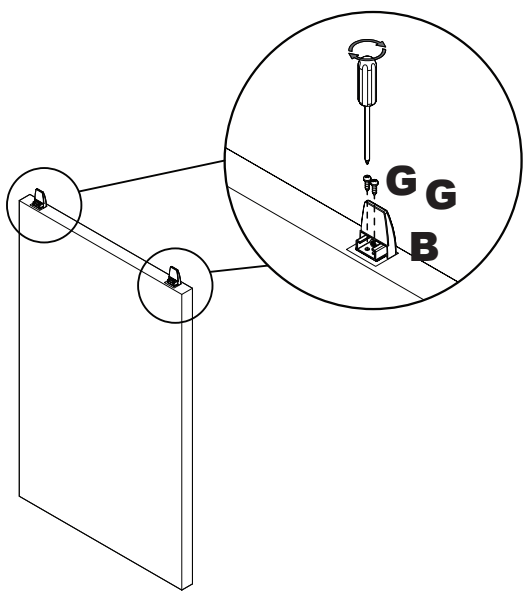
Attach D to B with Screw E



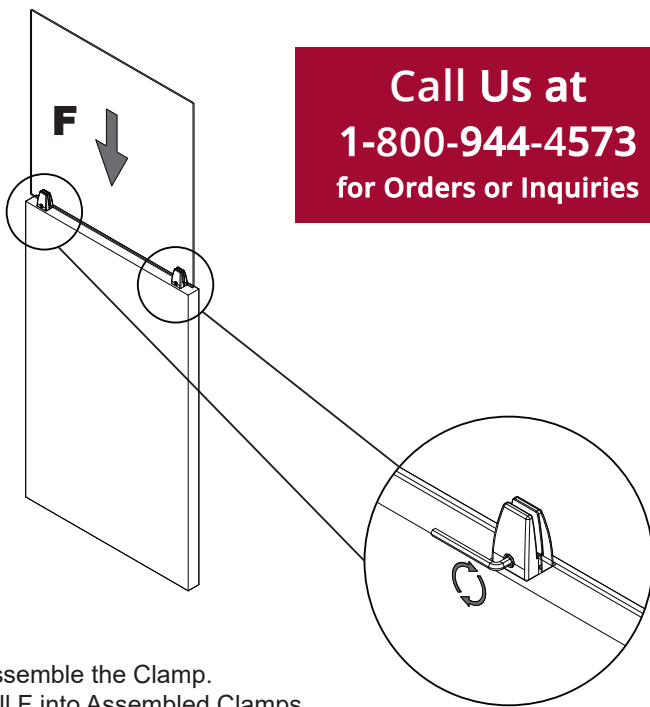
Install F into Assembled Clamps.
Tighten Clamps.



With Assistance - Place the Panel Assembly
on the Wall and Outline the Clamps
with a Pencil.



Remove and Disassemble the Panel Assembly.
Place Part B on the Wall in the Outline Location
and Secure with Screws G.



Reassemble the Clamp.
Install F into Assembled Clamps.
Tighten Clamps.

Call Us at
1-800-944-4573
for Orders or Inquiries