

Luxor RECLAIM Clear Acrylic 60" x 24" Clamp-On Sneeze Guard Cubicle Wall Extender

Instruction Manual



Provided by

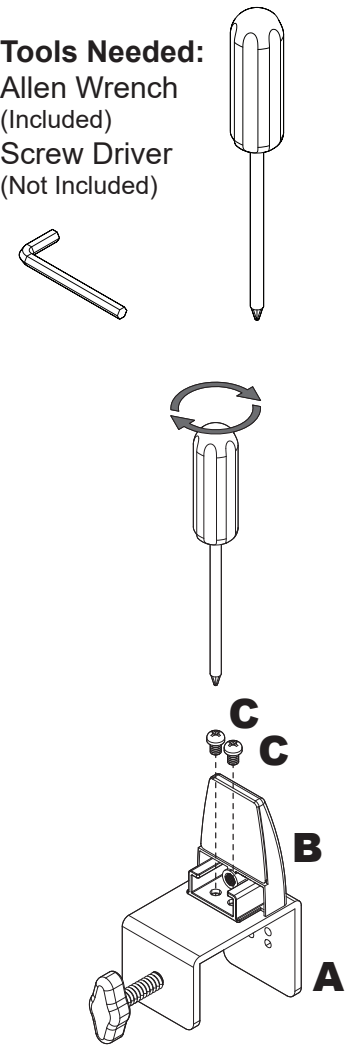
MyBinding.com
When Image Matters.

Call Us at 1-800-944-4573

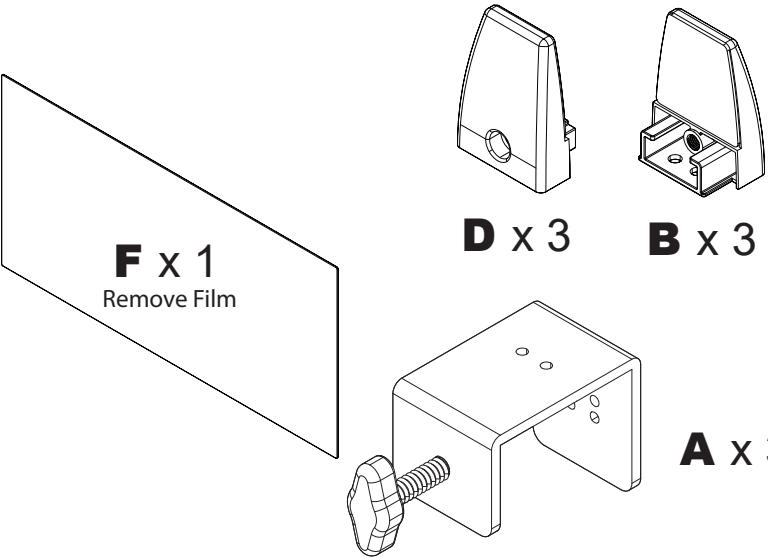
DIVWT 3 Clamp Wall Divider Panel Assembly Guide

Part List

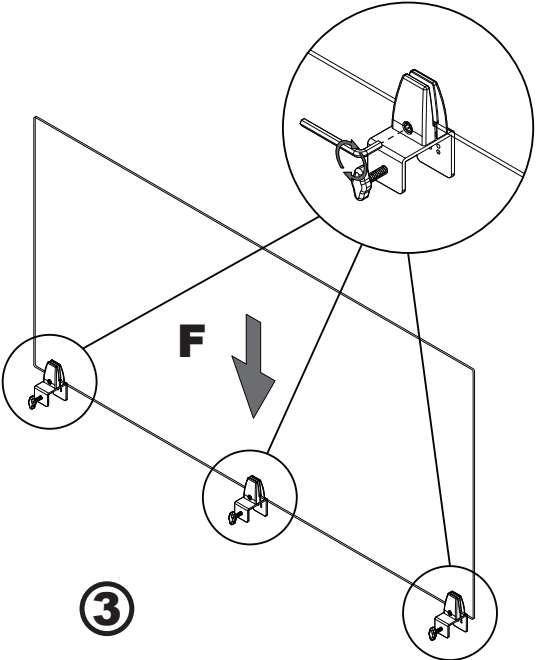
Tools Needed:
Allen Wrench
(Included)
Screw Driver
(Not Included)



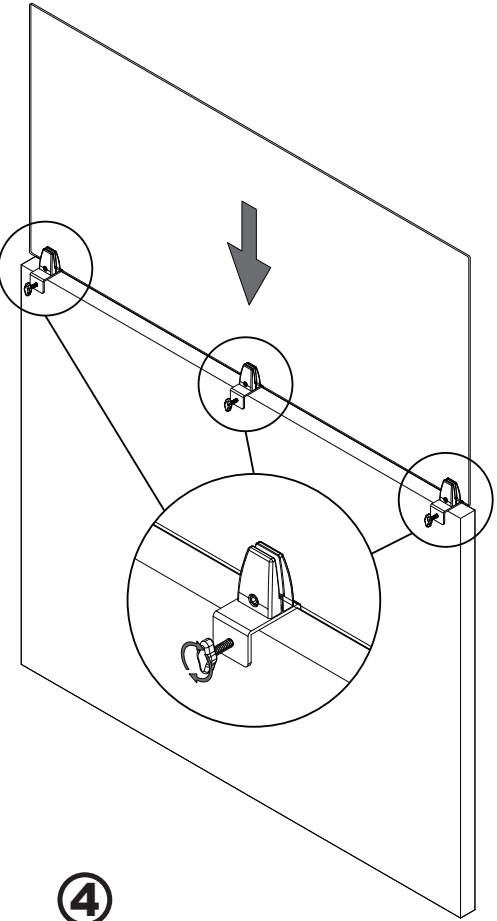
①
Attach B to A with Screws C



②
Attach D with Screw E



③
Install F into Assembled Clamps
Tighten Clamps



④
Install Divider Panel onto Wall
Tighten Clamps to Wall

C x 6
M4 x 5mm

E x 3
M6 x 16mm

G x 6
M4 x 16mm
Optional Permanent Mount
Refer to the Back Page

F x 1
Remove Film

D x 3

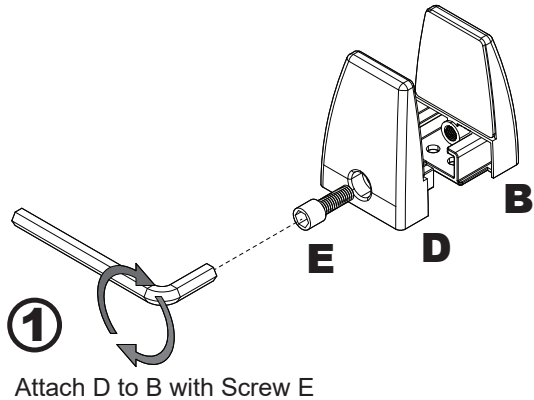
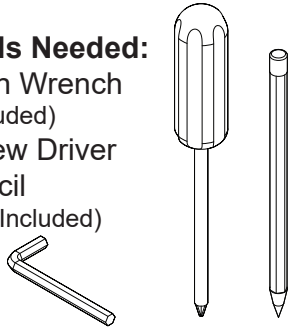
B x 3

A x 3

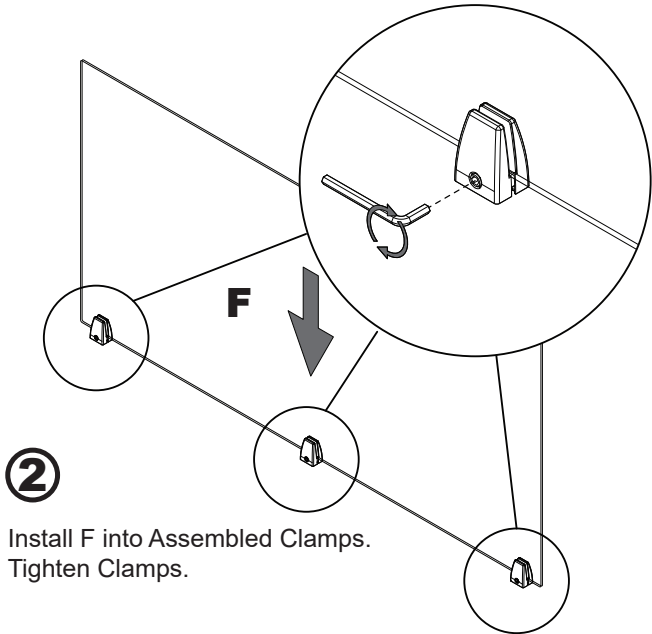
DIVWT 3 Clamp Wall Divider Panel Assembly Guide

Optional Permanent Mount

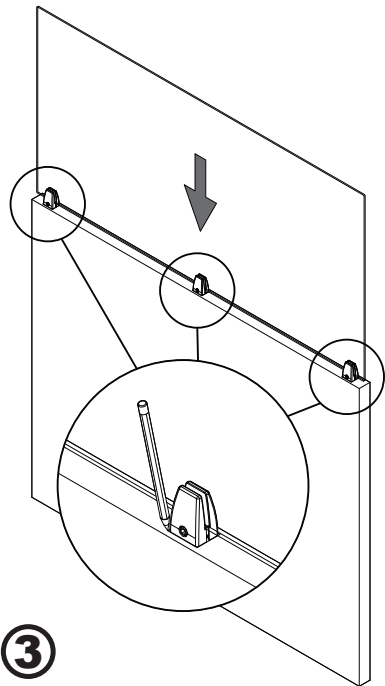
Tools Needed:
Allen Wrench
(Included)
Screw Driver
Pencil
(Not Included)



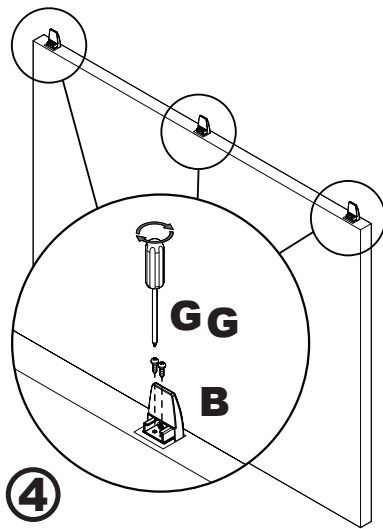
1 Attach D to B with Screw E



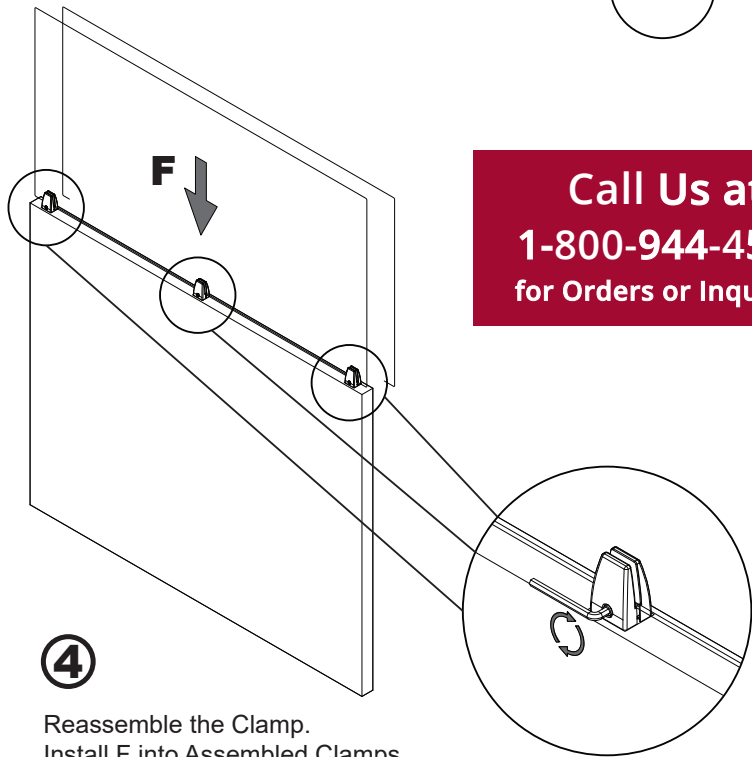
2 Install F into Assembled Clamps.
Tighten Clamps.



3 With Assistance - Place the Panel Assembly
on the Wall and Outline the Clamps
with a Pencil.



4 Remove and Disassemble the Panel Assembly.
Place Part B on the Wall in the Outline Location
and Secure with Screws G.



4 Reassemble the Clamp.
Install F into Assembled Clamps.
Tighten Clamps.

Call Us at
1-800-944-4573
for Orders or Inquiries