

MINICOMB Manual Plastic Comb Binding Machine

Instruction Manual



Provided by

MyBinding.com
When Image Matters.

Call Us at 1-800-944-4573

MINICOMB	Specifications
Punching Capacity	10 sheets (20 lb paper) or 2 sheets of plastic covers
Binding Capacity	250 sheets (20 lb paper)
Number of Holes	19 Holes
Format	Letter
Depth Margin	Adjustable
Side Margin Guide	Adjustable
Machine Dimensions	15" x 10.5" x 5"
Weight & Volume	11.5 lbs & 0.41 CbFt
Warranty	2 Years

WARRANTY POLICY

YOUR MINICOMB HAS A WARRANTY OF 2 YEARS FROM DATE OF PURCHASE. IN THE EVENT OF A MANUFACTURER'S DEFECT, MY BINDING WILL REPAIR OR REPLACE IT. IMPORTANT: THIS WARRANTY DOES NOT COVER DAMAGES DUE TO IMPROPER USE OR MISTREATMENT OF THE UNIT, INCLUDING EXTRAORDINARY EVENT LEADING TO THE DAMAGE OF THE MACHINE, WHETHER IT IS REVERSIBLE OR NOT.



1-800-944-4573

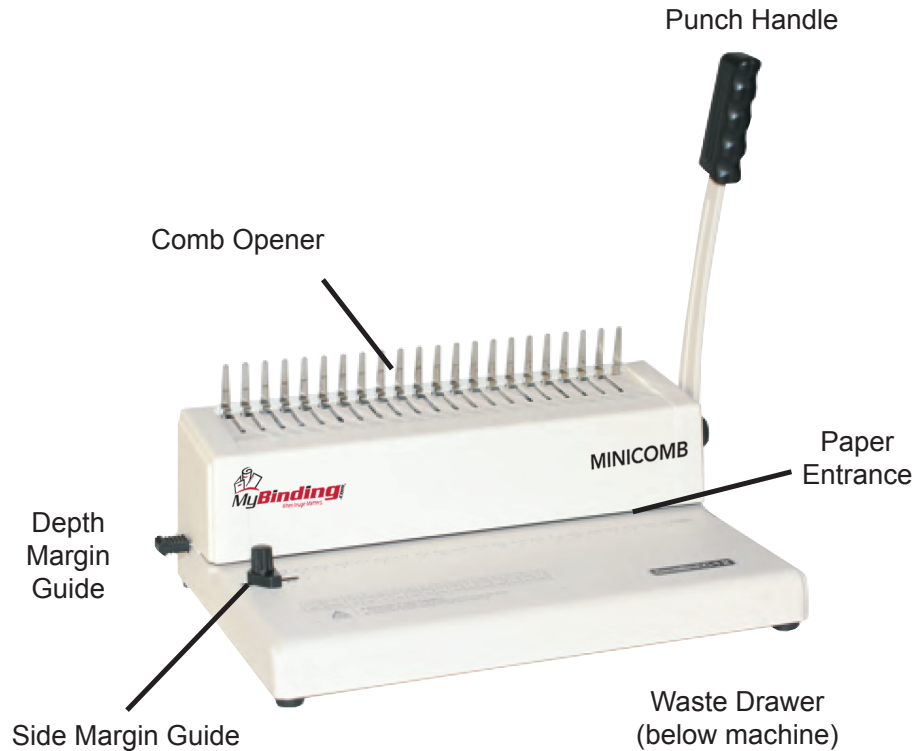
MINICOMB

Comb Binding Machine

OPERATIONAL MANUAL



FEATURES

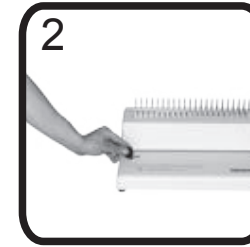
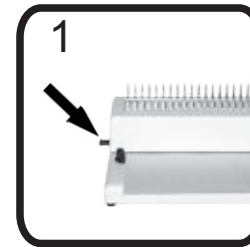


ASSEMBLY

- 1) Place your **MINICOMB** on top of a sturdy table.
- 2) Install Punch Handle and tighten screw.

PUNCHING

1. Use Depth Margin Guide to set the preferred punching margin.
2. Move the Side Margin Guide to center the holes on your documents.
3. Insert the documents (10 sheets of 20lb paper max) and press down on the Punch Handle to punch holes, then release back to original position. Repeat Step 3 as needed.



BINDING

4. Place the comb on the comb opener and push the Punch Handle back to open the comb.
5. Insert punched documents into the opened comb (not pictured).
6. Move the Punch Handle forward to close the comb. You now have a comb bound book.

