

# ***Purple Cows 2-in-1 Combo 13" Craft Trimmer - 1040***

Instruction Manual



*Provided by*

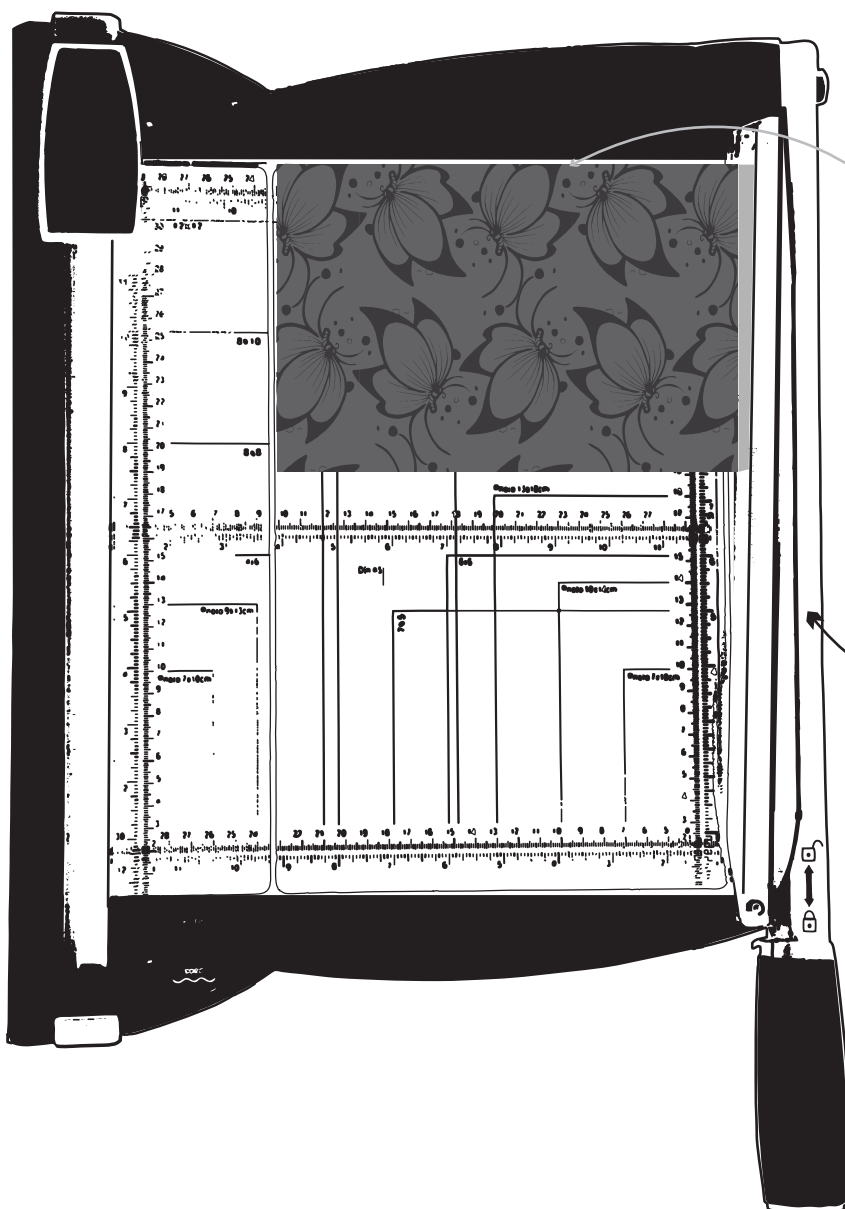
**MyBinding.com**  
*When Image Matters.*

Call Us at 1-800-944-4573

## 1040c Cutting Guide - **GUILLOTINE**

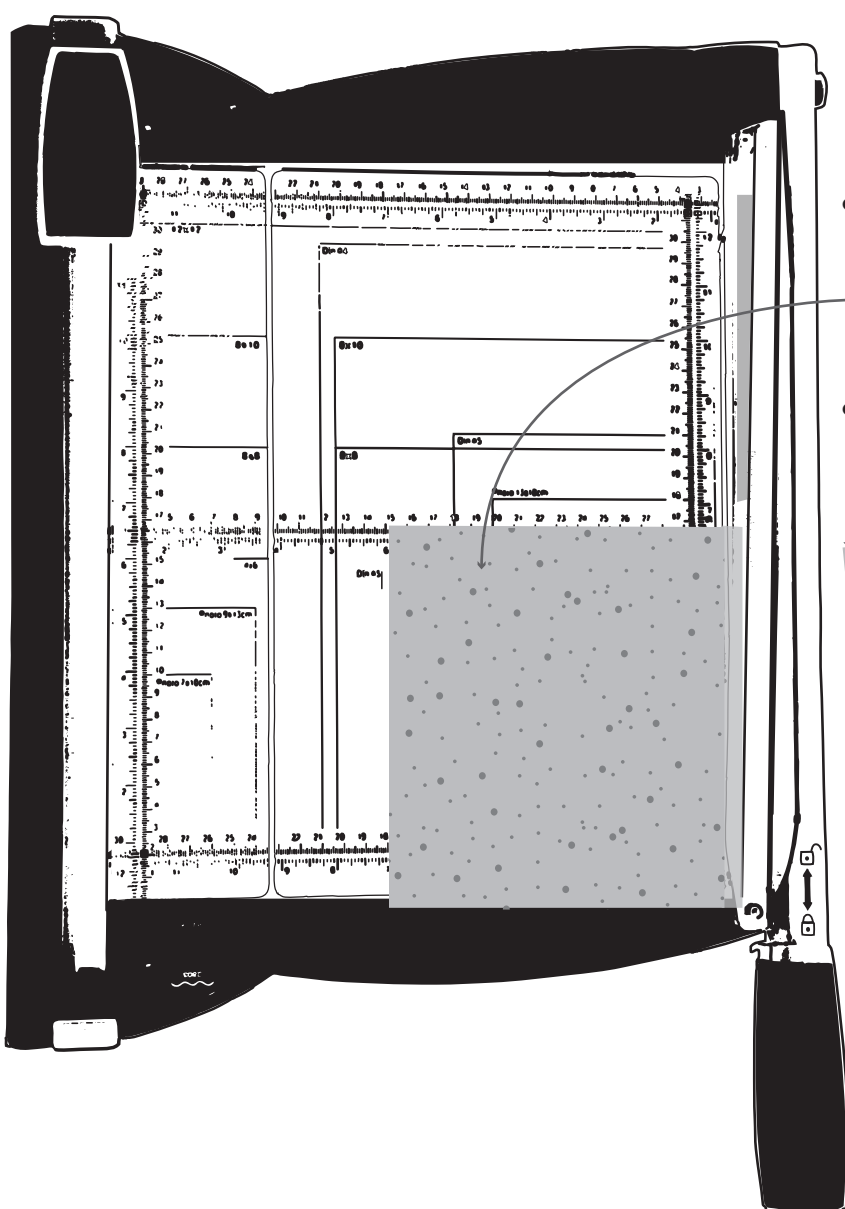
### **Cutting with the Guillotine** - *measurements embossed in black*

When trimming with the guillotine, the cutting base is marked with rulers in inches and centimeters across the top and bottom, as well as vertically along the inside of the press down paper guide in black along with standard paper and photo measurements embossed on the surface. **Cutting edge is  $\frac{1}{8}$ " from outside edge of press down paper guide.**



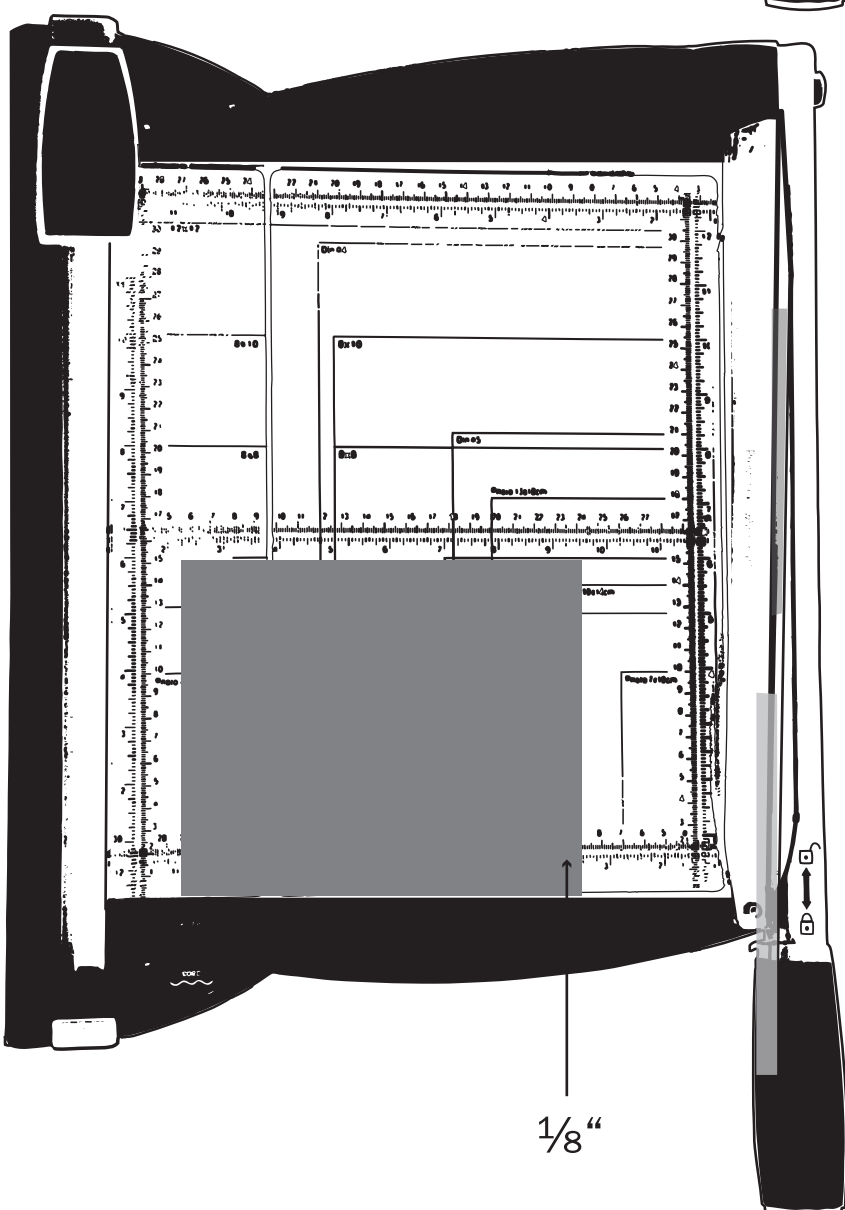
**1.**

- To cut, square up the paper along the raised edge of the top or bottom of the cutting base
- Unlock and lift the guillotine arm
- Press down on the paper guide and swing down the guillotine arm in one smooth motion.



**2.**

- To cut, for example, a  $4\frac{1}{2}$ " x 6" card, line up the paper with the first measurement and cut
- Then turn the paper, line up with the second measurement, and cut.



**3.**

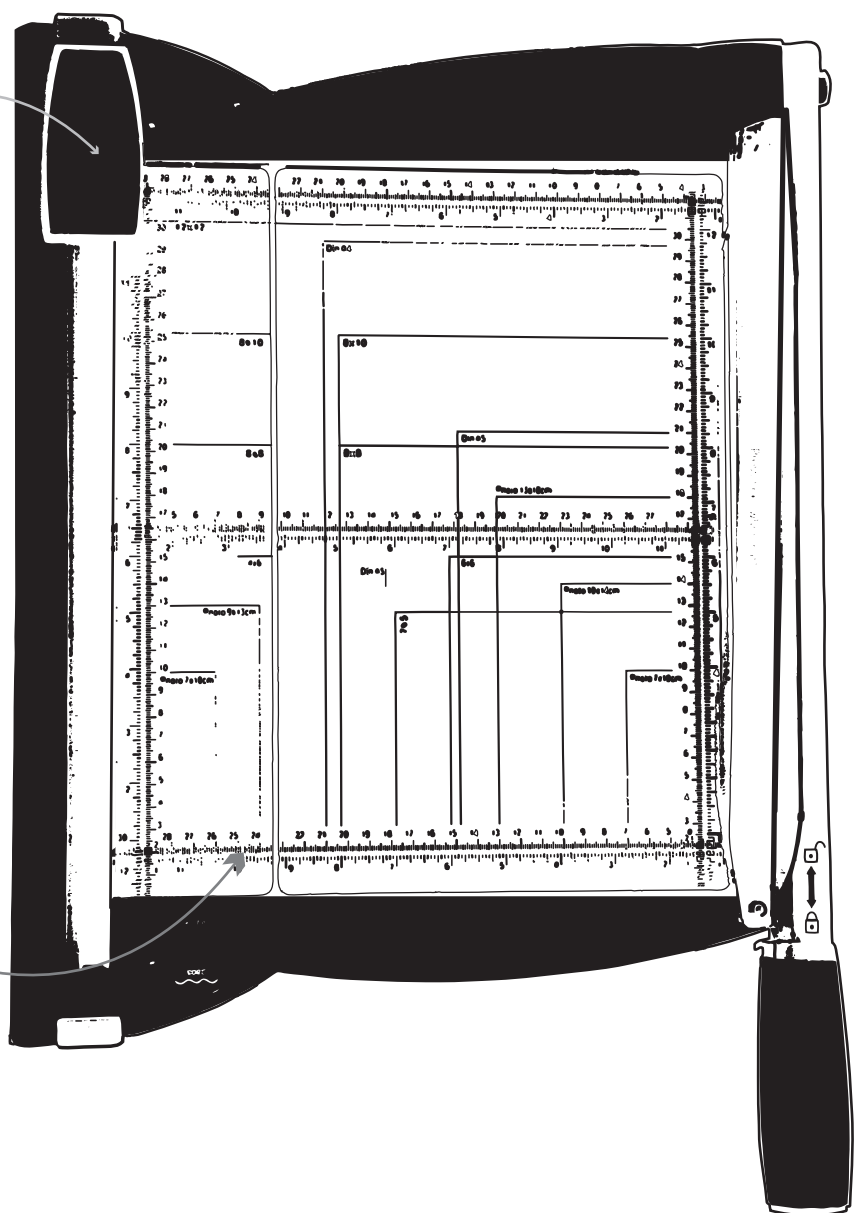
- To cut out something like a photo and get your cut exactly on the edge, use the cutting base to **measure  $\frac{1}{8}$ " from the desired edge** on the inside of the photo.
- Make a small mark above and below exactly  $\frac{1}{8}$ " from the desired cut edge.
- Repeat for each edge.
- These marks will be your guides.
- Place your photo on the cutting base, lift the guillotine arm, and line up the marks with the edge of the paper guide, this will line up your desired cut edge with the cutting base. Cut.

## Cutting with the Rotary - *measurements embossed in blue*

When trimming with the rotary trimmer, the cutting base is marked with rulers in inches and centimeters vertically along the inside of the press bar and horizontally across the center of the cutting base in blue. **Cutting edge is  $\frac{1}{8}$ " from outside edge of press down paper guide.**

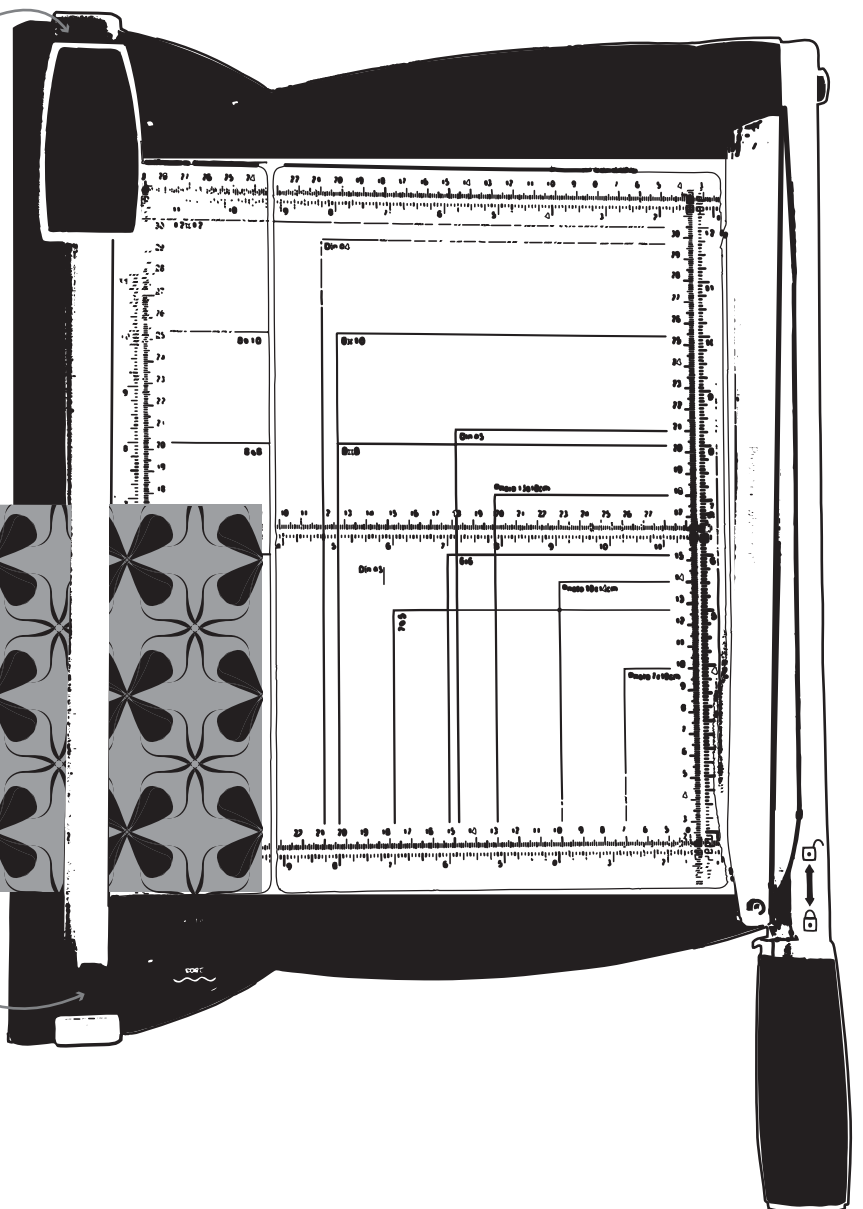
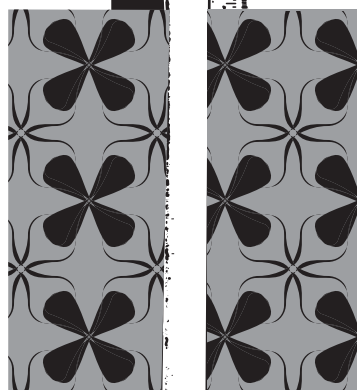
**1.**

- The rotary trimmer head slides along the locking paper press bar, which holds the paper in place while trimming.
- Slide the paper under the press bar and square up along the raised edge of the top or bottom of the cutting base.



**2.**

- Lock the press bar by pushing down on the locking mechanism at each end of the cutting rail; they will click into place.



**3.**

- Slide the cutting head to either the top or bottom of the cutting rail, press down on the cutting head to engage the blade, and slide the cutting head along the cutting guide, while applying pressure evenly.
- Disengage the press bar, and slide the cut paper out.
- For cutting on a desired line, the edge of the **paper press bar is exactly  $\frac{1}{8}$ " from the cut edge.**
- Alternatively, you can measure to the desired cut edge, then trim off that exact measurement.

