

Quartet DuraMax Total Erase Whiteboard Accessory - 210TEA

Instruction Manual



Provided by

MyBinding.com
When Image Matters.

Call Us at 1-800-944-4573

Duramax® Total Erase White Board Accessory

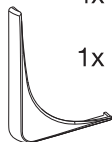
Assembly Instructions

Hardware Kit:

4x No. 6 x 1/4" Screw



1x Corner Cap Left

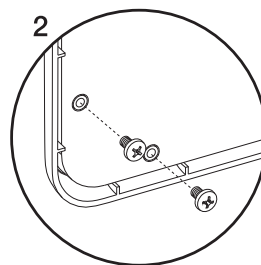
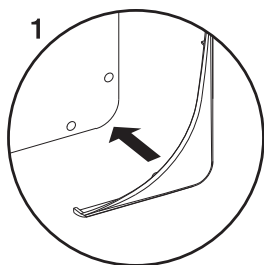
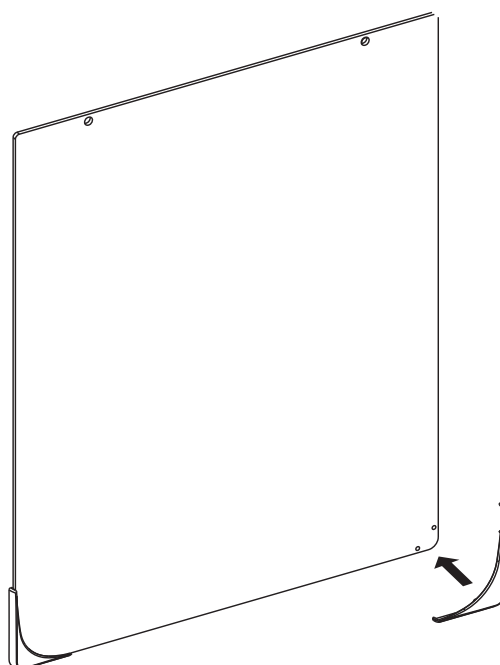
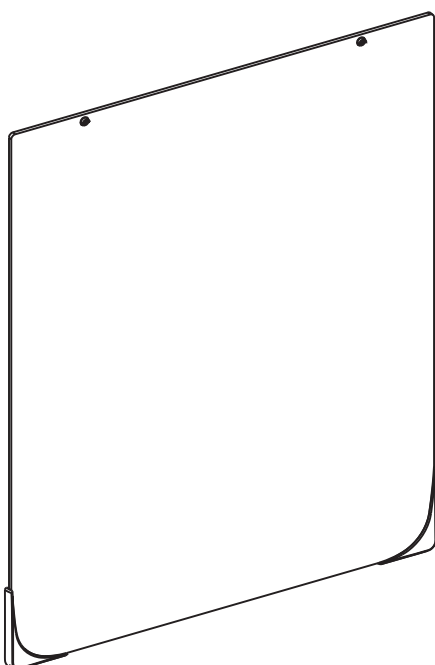


1x Corner Cap Right



Tools needed for assembly:

Phillips Screwdriver



1. Insert left and right corner caps into bottom holes in front of board.

2. Attach each corner cap with (2) no. 6 x 1/4" screws.



MyBinding.com
5500 NE Moore Court
Hillsboro, OR 97124
Toll Free: 1-800-944-4573
Local: 503-640-5920

Quartet and "Q" graphic are registered trademarks of General Binding Corporation.
ACCO name and design is a registered trademark of ACCO Brands.
© 2008 ACCO Brands Corporation. All Rights Reserved. Patent Pending.

210TEA_INX_REV.1

