

Quartet Anywhere 3' x 2' Repositionable Dry-Erase Surface Sheet - R85532

Instruction Manual



Provided by

MyBinding.com
When Image Matters.

Call Us at 1-800-944-4573

Quartet® Anywhere™ Repositionable Dry-Erase Surface

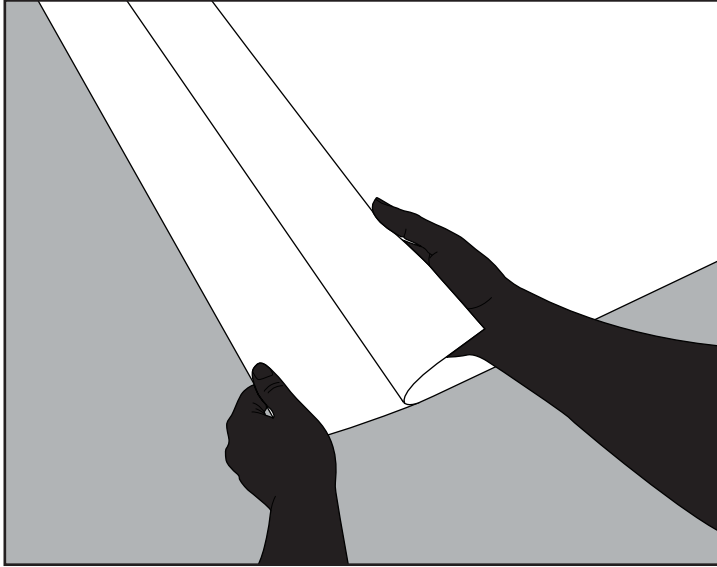
Installation and Usage Instructions

Recommended Surfaces:

Painted drywall, glass, painted steel, finished wood, whiteboards, chalkboards and stone.

Surface Preparation:

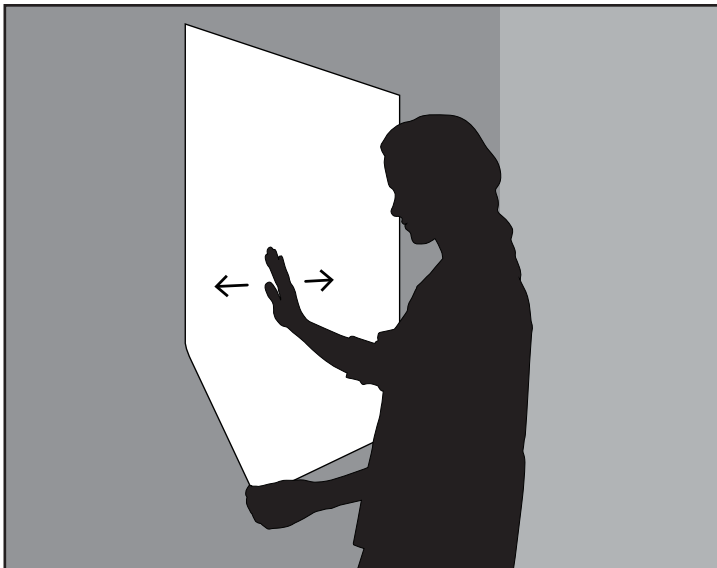
Clean and allow surface to fully dry prior to application. Ensure surface is smooth and free of dust, chipped paint, or other imperfections.



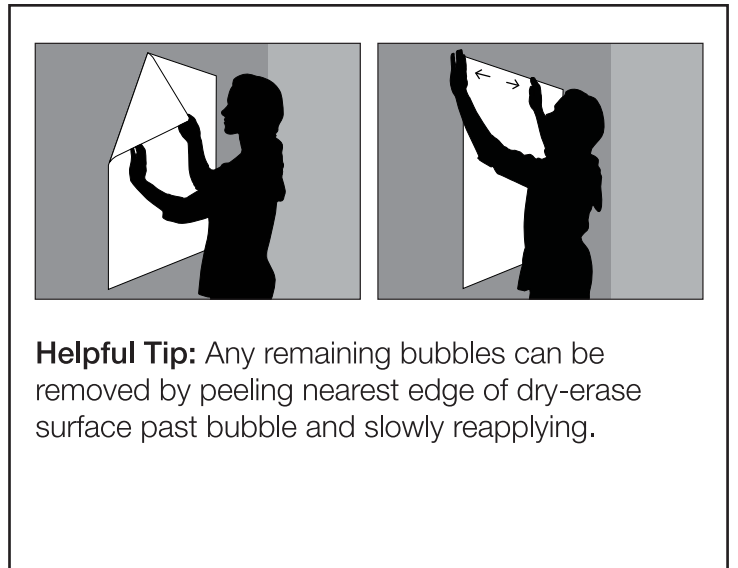
Step 1: Begin by removing a portion of the dry-erase surface from the paper backer.



Step 2: Apply each of the top corners to the surface you are trying to cover. Check that the product is level and aligned correctly. Simultaneously, smooth out surface as adhesive backer is pulled away.



Step 3: Slowly press the adhesive against the wall or other surface, working any air bubbles to the nearest edge.



Helpful Tip: Any remaining bubbles can be removed by peeling nearest edge of dry-erase surface past bubble and slowly reapplying.

MyBinding.com
5500 NE Moore Court
Hillsboro, OR 97124
Toll Free: 1-800-944-4573
Local: 503-640-5920



R85532_R85543_R85564_INX_REV1

