

Standard AutoCreaser 50 Scoring Machine

Parts Manual

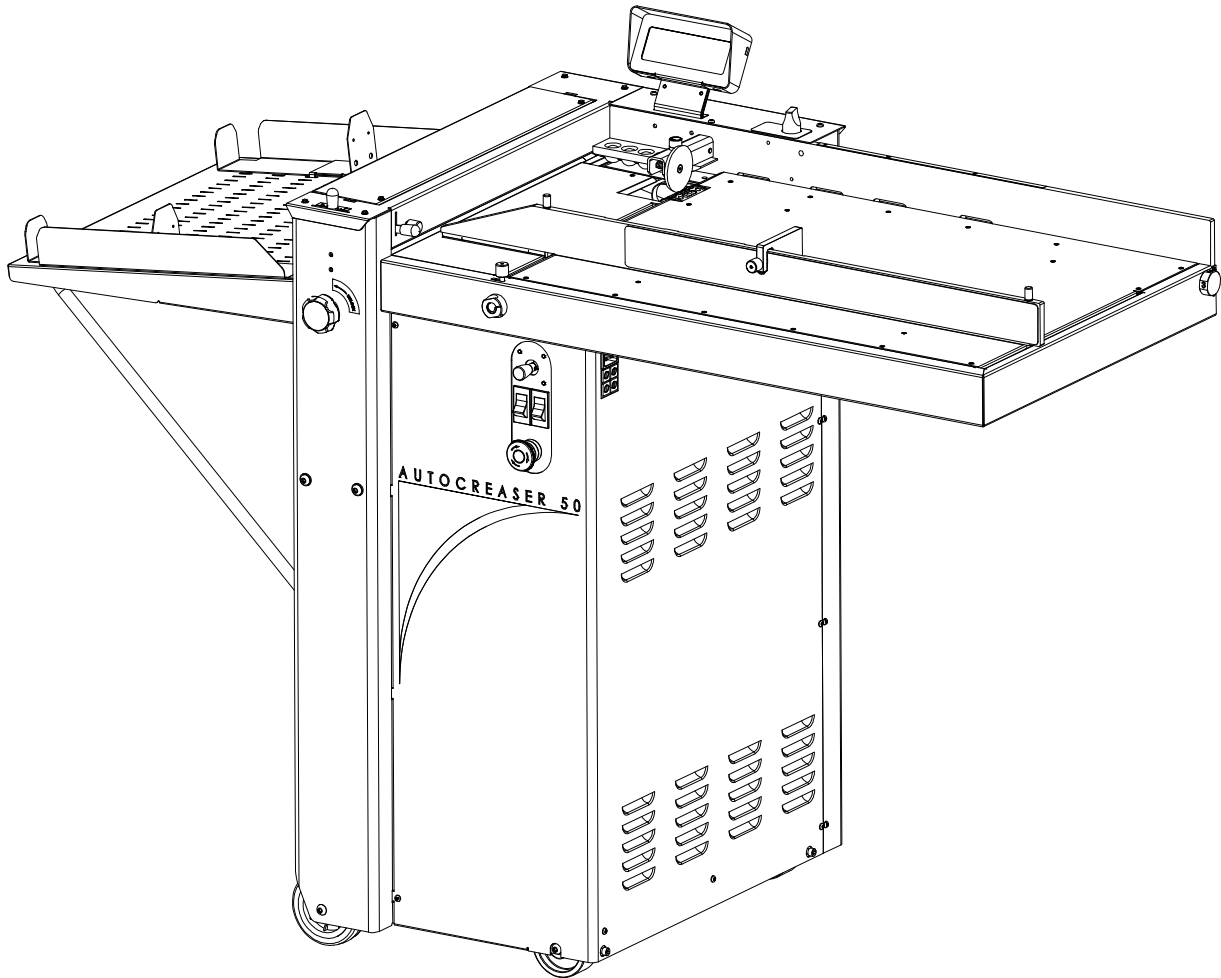


Provided By

MyBinding.com®
When Image Matters.

Morgana

AutoCreaser 50



ILLUSTRATED PARTS MANUAL

Morgana Systems Limited United Kingdom

Telephone: (01908) 608888 Facsimile: (01908) 692399

Website: www.morgana.co.uk

ISSUE 7 January 2008

SERIAL No. 710386LBAD ONWARDS

Morgana AutoCreaser 50

ILLUSTRATED PARTS MANUAL

The Illustrated Parts Manual has been designed to assist when selecting a part or assembly which may be required to service or repair your machine.

The index on page four lists all of the major assemblies in the order in which the machine is constructed.

The following page demonstrates how to recognise a part from a sub-assembly and shows the quantity contained within the major assembly.

The major assembly number and description is listed at the top of the page and should always be quoted when ordering parts or when seeking technical advice.

Before ordering parts confirm that the model number of the machine (listed at the top of page four) is identical to the number stamped on the specification plate fixed as shown in section four (starting page 12). Whilst checking this, make a note of the serial number also stamped on the plate.

Some components will not be made available individually as they form part of sub-assembly which may require specialist tools and knowledge to dismantle. The machine may not perform correctly if attempts are made to repair sub-assemblies of this type.

NOTE....

**ALWAYS READ THE OPERATORS MANUAL BEFORE MAKING ANY
ADJUSTMENTS TO YOUR MACHINE AND ALWAYS DISCONNECT THE POWER
SUPPLY BEFORE REMOVING ANY COVERS.**

USING THIS MANUAL.....

CIRCLED ITEM NUMBERS IN LISTS & ON ILLUSTRATIONS INDICATE SUB ASSEMBLIES.

ITEMS LISTED ARE AVAILABLE INDIVIDUALLY AS SPARE PARTS.

10			
11	92 - 039	1	SLIDE FRAME ASSEMBLY - Low
12	95-046	1	SWITCH ASSEMBLY - Set-up
13	95-047	1	SWITCH ASSEMBLY - Feed
14	95-049	1	SWITCH ASSEMBLY - Rotary Setting Dial
15	95-058	1	SWITCH ASSEMBLY - Push Button 1
16	95-059	1	SWITCH ASSEMBLY - Push Button 2
17	95-060	1	SWITCH ASSEMBLY - Push Button 3
18	95-064	1	SWITCH ASSEMBLY - Push Button 4
19			
30			

QUANTITY PER ASSEMBLY

NOTE....

Some sections have footnotes to explain various aspects of the parts lists and accompanying illustrations. They may also include warnings about the fitting of parts, their removal, or the need to use special tools.

TIP....

Some sections have tips to assist you in choosing spare parts for your machine or advice about keeping certain parts readily available to minimise downtime.

WARNING.....

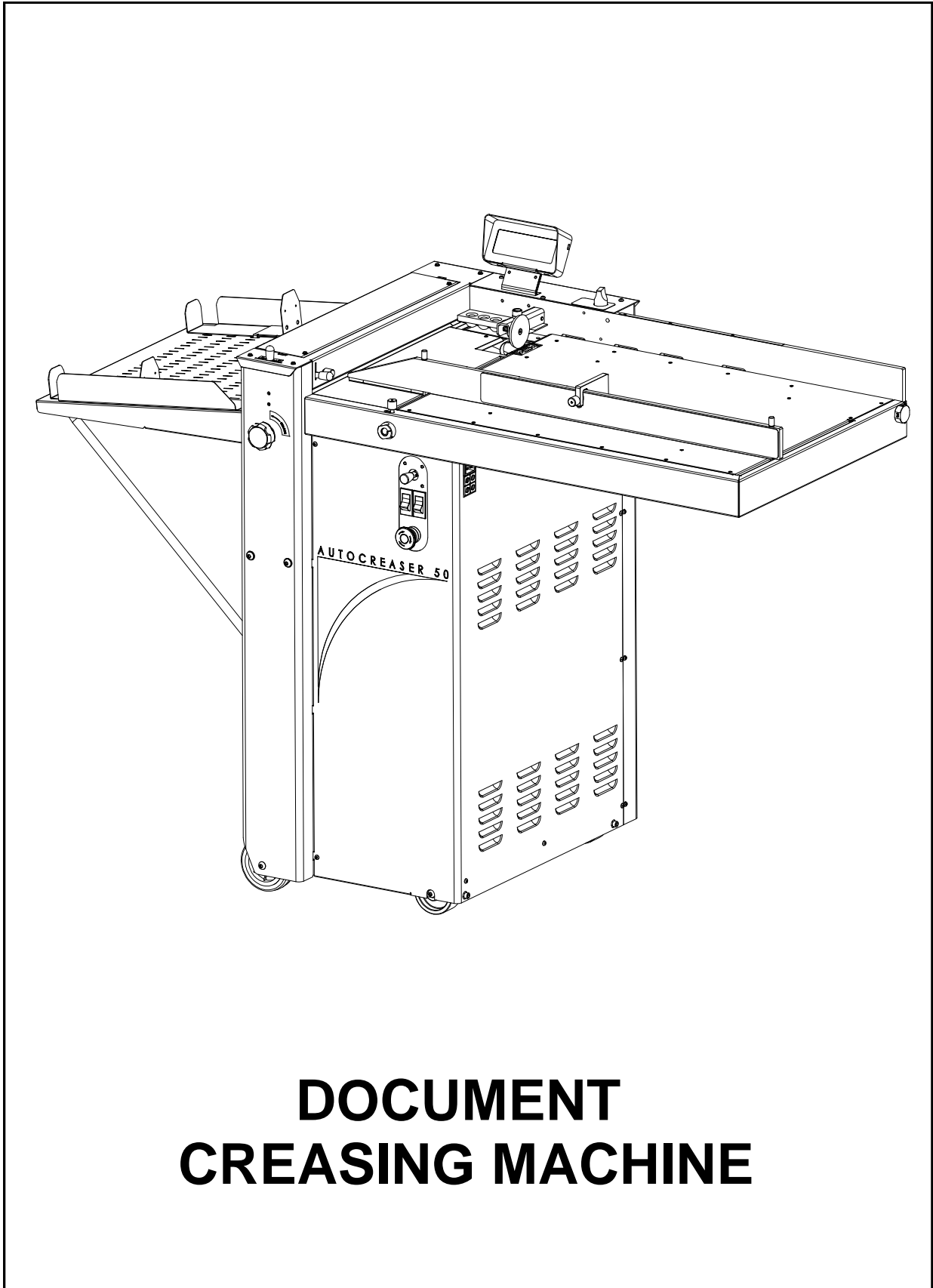
SOME SECTIONS HAVE WARNING NOTICES TO ADVISE YOU ABOUT ACTIONS WHICH MAY IMPAIR YOUR MACHINES PERFORMANCE OR CAUSE UNNECESSARY DAMAGE.

SECTION	ASSEMBLY	DESCRIPTION	PAGE
1	7-01-10	MAIN ASSEMBLY	6
2	7-03-10	FEED BED ASSEMBLY	8
3	7-04-10	PAPER CONTROL ASSEMBLY	10
4	7-05-10	SERVICES 50Hz	12
5	7-06-10	CREASER UNIT	20
6	7-08-13	STACKER ASSEMBLY	28

NOTE....

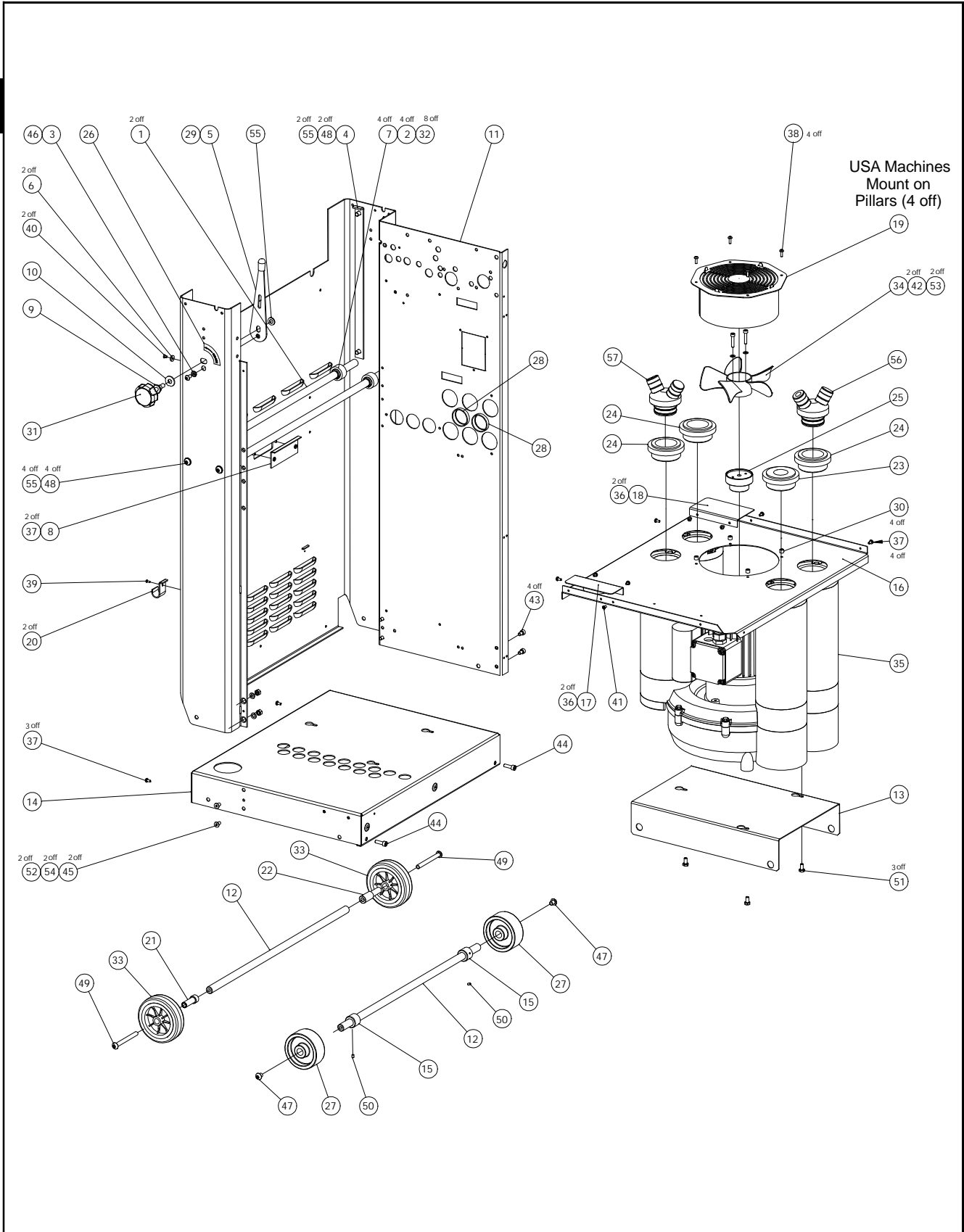
TIP....

To assist you in quickly finding the section you require, there are numbered tabs positioned down the outside edges of each page.



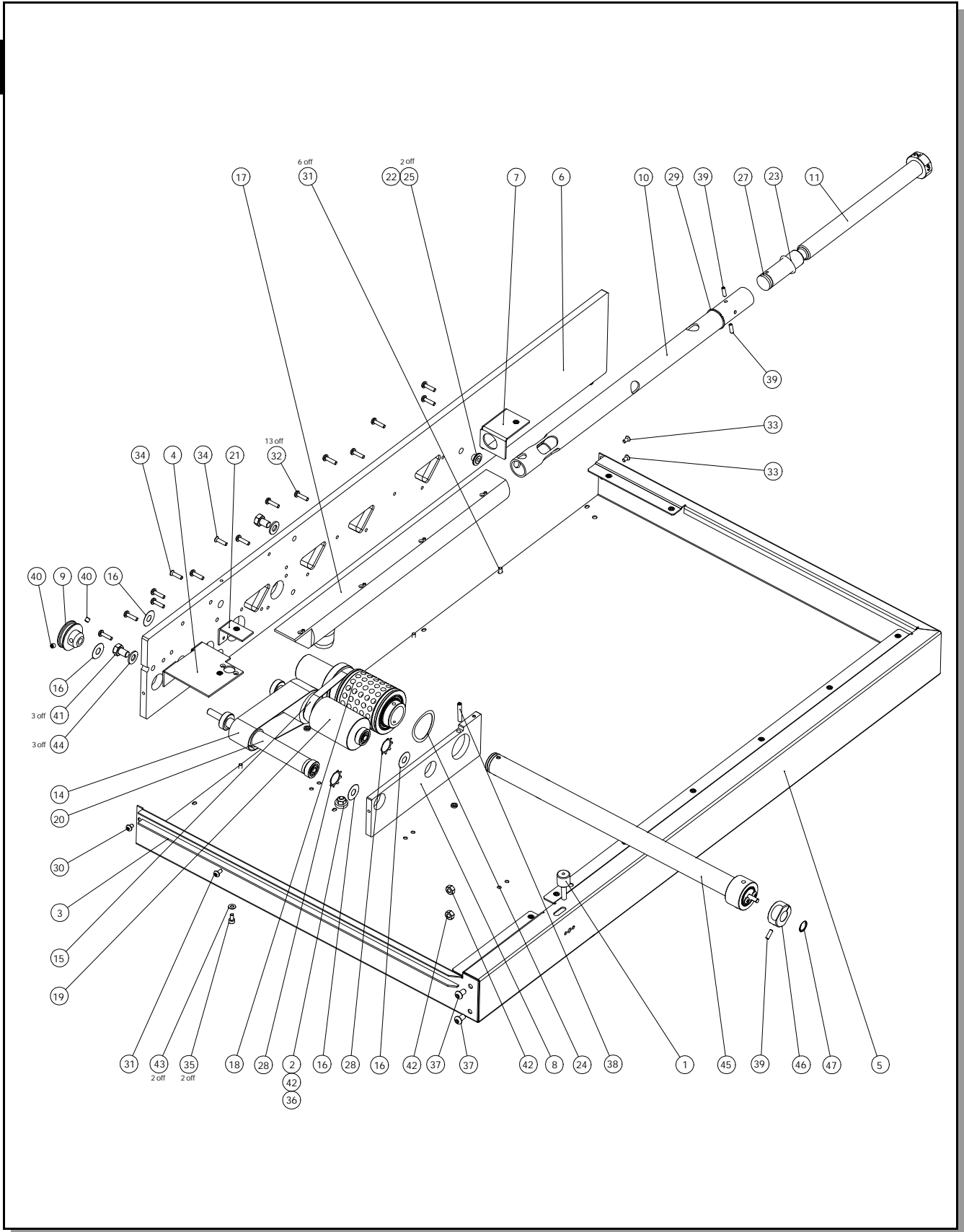
DOCUMENT CREASING MACHINE

1



ITEM NO.	PART NUMBER	QTY.	Description
1	71-002-04	2	Tie Bar MK3
2	71-005	4	Support Spool
3	71-010	1	Pivot Bush
4	71-011	1	HINGE PLATE - AutoCreaser.
5	71-013-02	1	TILT LEVER - MK2.
6	71-015	2	Pad
7	71-016	4	Shock Sleeve
8	71-018-02	1	PLATE - Blanking - AutoCreaser.
9	71-020	1	LOCKING STUD - Clamp
10	71-025	1	Tilt Washer
11	71-051-02	1	MAIN FRAME - AutoCreaser 50.
12	71-052-01	2	AXLE - Main Wheels
13	71-053-01	1	Blower Support
14	71-054-02	1	PLINTH - AutoCreaser 50.
15	71-055-01	2	WHEEL COLLAR - AutoCreaser 50.
16	75-202-04	1	Add Assy Description
17	75-208-01	1	Tower Blank - Op Side
18	75-208-02	1	Tower Blank - Lay Side
19	75-229-01	1	Fan Guard Assy
	75-254-01	4	HEX PILLAR M4M / M4F X 40 LONG (USA ONLY)
20	78-057-01	2	HOOP HOOK.
21	91-006-05	1	WHEEL TUBE - Op. Side - AutoCreaser 50.
22	91-006-06	1	WHEEL TUBE - Lay Side - AutoCreaser 50.
23	91-025-04	1	BUNG - Compressor - Ø25 Pipe.
24	91-025-05	3	BUNG - Compressor - Ø40 Pipe.
25	91-104-01	1	FAN HUB - Sv190 (50Hz) (UK)
	91-104-03	1	FAN HUB - Sv190 (60Hz) (USA)
26	96-060	1	LABEL - Lock
27	62-006	2	NYLON WHEEL.
28	601-015	2	Snap Bushing Ø33.3 x Ø38
29	601-111	1	Tapered Ferrule
30	605-058	4	NYLON SPACER - Ø7.94 x Ø4.34 x 6.35
31	606-035	1	LOBE KNOB - Female - M8
32	615-014	8	CIRCLIP - External - Ø15
33	617-008	2	Wheel - Ø100
34	621-025	1	FAN - PLASTIC 5 BLADE 6" CCW
35	621-032	1	Blower Sv190 (50Hz) (UK)
	621-033	1	Blower Sv190 (60Hz) (USA)
36	401-02-040-006	4	Screw - Pan Pozl Tapfite - M4 x 6 Lg.
37	401-02-040-008	9	Screw - Pan Pozl Tapfite - M4 x 8 Lg.
38	401-02-040-012	4	Screw - Pan Pozl Tapfite - M4 x 12 Lg.
39	402-02-030-080	2	SCREW - Countersunk Pozl Tapfite - M6 x 8 Lg.
40	402-02-040-006	2	Screw - Csk Hd. Tapfite - M4 x 6 Lg.
41	402-02-040-008	1	Screw - Csk Hd. Tapfite - M4 x 8 Lg.
42	403-01-050-025	2	SCREW - Socket Cap Head - M5 x 25 Lg.
43	403-01-060-010	4	SCREW - Socket Cap Head - M6 x 10 Lg.
44	403-01-060-020	2	SCREW - Cap Hd. - M6x 20 Lg.
45	404-01-060-012	2	SCREW - Socket Csk Head - M6 x 12 Lg.
46	405-01-060-012	1	SCREW - Socket Button Head - M8 x 16 Lg.
47	405-01-080-010	2	SCREW - Socket Button Head - M8 x 10 Lg.
48	405-01-080-016	6	SCREW - Socket Button Head - M8 x 16 g.
49	405-01-080-080	2	SCREW - Socket Button Head - M8 x 50 Lg.
50	409-01-040-006	2	Screw - Skt Set Screw - Flat Pt. - M4 x 6 Lg.
51	415-01-060-012	3	Hex Hd. Setscrew - M6 x 12 Lg.
52	461-01-060	2	NUT - Full - M6
53	481-050	2	WASHER - Plain - M5
54	481-060	2	WASHER - Plain - M6
55	481-080	7	WASHER - Plain - M8
56	71-01-03	1	SV190 ADAPTOR ASSY - Ac50 - Blow
57	71-01-04	1	SV190 ADAPTOR ASSY - Ac50 - Vacuum

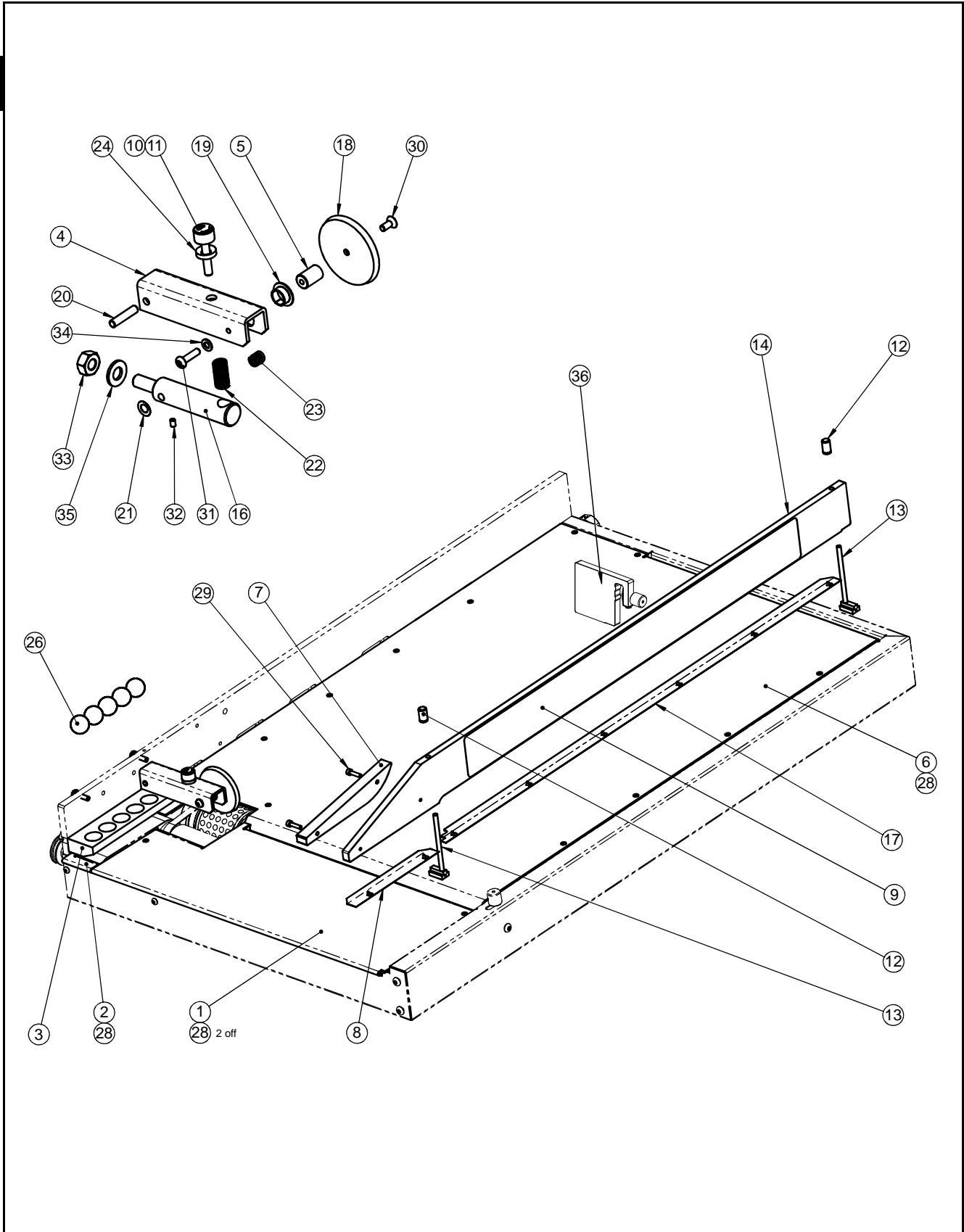
2



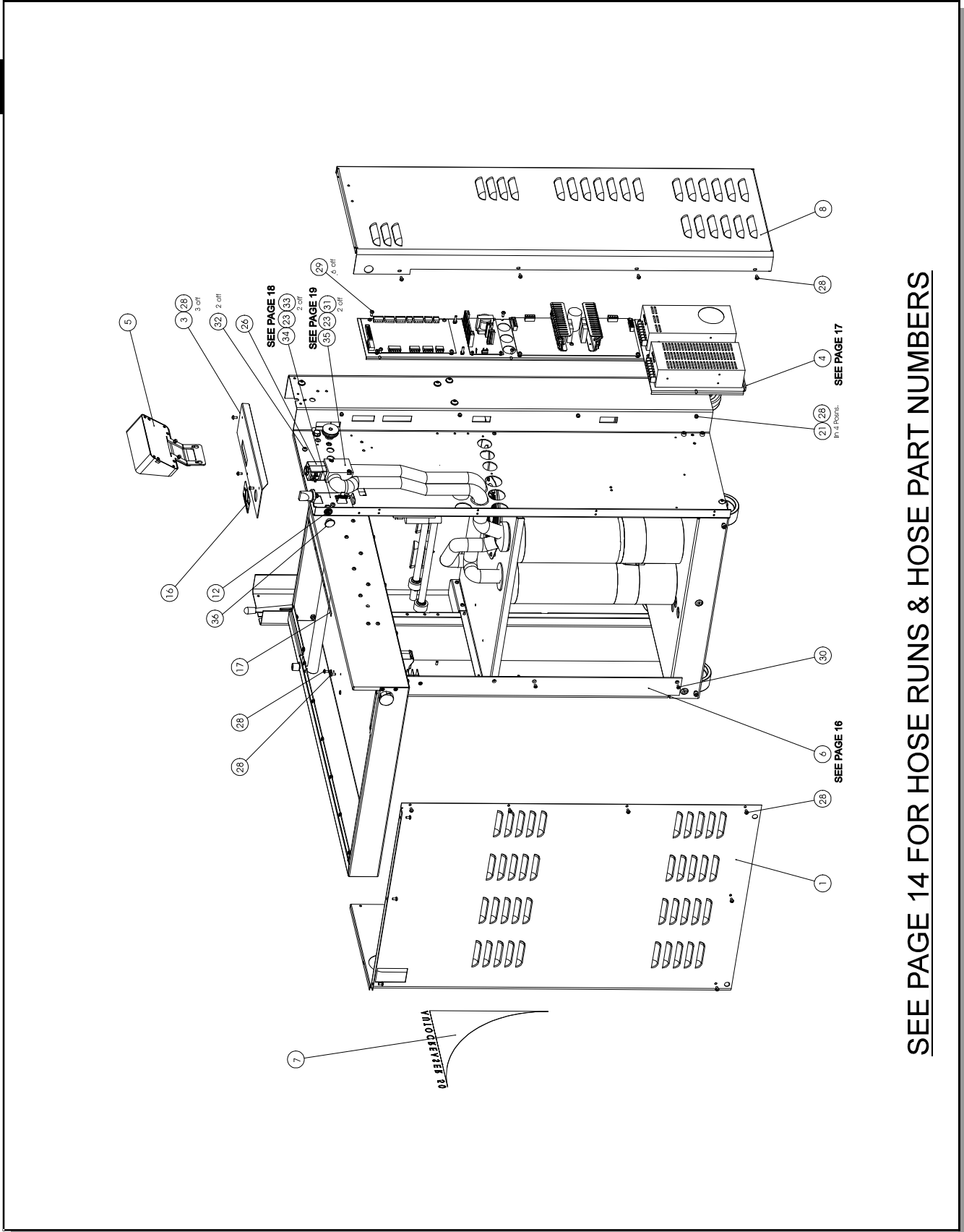
ITEM NO.	PART NUMBER	QTY.	Description
1	28-003	1	UNIVERSAL KNOB ASSY - M6 x 25 Lg. - Black - Ø16
2	51-095	1	Clamp Washer
3	73-009-02	1	FEED BED SPACER - Foam.
4	73-012-02	1	BELT SUPPORT - AutoCreaser 50.
5	73-051-01	1	FEED FRAME - AutoCreaser 50.
6	73-052-01	1	MANIFOLD PLATE - AutoCreaser 50.
7	73-053-01	1	SUPPORT BRACKET - Loading Table.
8	73-054-01	1	SUPPORT PLATE - AutoCreaser 50
9	76-041	1	CORD PULLEY - Driven.
10	93-004	1	Air Distribution Tube
11	93-005-02	1	KNOB - Air Distribution - AutoCreaser 50.
14	93-021	1	Feed Belt
15	93-022	1	Vacuum Roller Drive Belt
16	93-023	4	Shield - Self Aligning Ball Race
17	73-03-01	1	Manifold Tube Assy
18	93-030-02	1	Vacuum Roller Assy
19	93-031	1	Feed Drum Assy - Idler
20	93-032	1	Feed Drum Assy - Drive
21	93-033-02	1	Support Bracket - Control Bed - M3
22	601-088	1	Spring Plunger - Press In
23	604-060	1	Washer - Waved - Ø25.5 X Ø19 X 3
24	604-062	1	Washer - Waved - Ø35.5 X Ø43.5 X 0.4
25	605-004	2	Thrust Washer - Ø8 x Ø15.88 x 0.79
27	609-014	1	'O' Ring Ø15 x Ø3
28	615-035	2	Metric Push-in Fix
29	615-040	1	Retaining Ring - External - Ø25
30	401-02-040-006	1	Screw - Pan Pozl Tapfite - M4 x 6 Lg.
31	401-02-040-008	7	Screw - Pan Pozl Tapfite - M4 x 8 Lg.
32	401-02-040-016	13	Screw - Pan Pozl Tapfite - M4 x 16 Lg.
33	402-02-040-008	2	Screw - Csk Hd. Tapfite - M4 x 8 Lg.
34	402-02-040-016	2	Screw - Csk Hd. Tapfite - M4 x 16 Lg.
35	403-01-040-008	2	Screw - Socket Cap Head - M4 x 8 Lg.
36	403-01-060-012	1	Screw - Socket Cap Head - M6 x 10 Lg.
37	405-01-060-010	2	Screw - Button Hd. - M6 x 10 Lg.
38	408-01-050-030	1	Screw Skt Cone Pt - M5 x 30 Lg.
39	409-01-040-012	3	Screw - Socket Set - Flat Point - M4 x 12 Lg.
40	409-01-050-005	2	Screw - Socket Set - Flat Point - M5 x 5 Lg.
41	415-01-080-012	3	Screw - Hexagon Head - M8 x 12 Lg.
42	461-01-060	3	Nut - Full - M6
43	481-040	2	Washer - Plain - M4
44	481-080	3	Washer - Plain - M8
45	73-05-03	1	Choke Bleed Assembly - Autocreaser 50
46	73-066-01	1	Knob - Vacuum Bleed
47	94-021	1	Label - Papergate 'UP'

2

3



ITEM NO.	PART No.	QTY.	Description
1	74-001-02	1	FEED BED - AutoCreaser 50.
2	74-002-02	1	CONTROL BED - AutoCreaser 50.
3	74-003	1	BALL HOLDER - AutoCreaser.
4	74-010	1	PAPERGATE CHASSIS.
5	74-011	1	SPINDLE - Papergate.
6	74-050-02	1	Loading Table - Wide
7	74-054-01	1	SHEET GUIDE - Moving Sidelay
8	74-055-01	1	Membrane - Short - AutoCreaser 50
9	75-225	1	LABEL - Quick Start - Metric - AutoCreaser 50.
	75-237	1	LABEL - Quick Start - Imperial - AutoCreaser 50.
	75-243	1	LABEL - Quick Start - German - AutoCreaser 50.
	75-262	1	LABEL - Quick Start - French - AutoCreaser 50.
10	94-020	1	KNOB - Papergate.
11	94-021	1	LABEL - Papergate 'UP'.
12	94-026	2	CLAMP KNOB - Sidelay.
13	94-028	2	LOCK PIN ASSY. - Side Lay.
14	94-053-04	1	SIDELAY - Solid - AutoCreaser 50.
16	94-059	1	SUPPORT POST.
17	94-075-02	1	MEMBRANE - AutoCreaser 50.
18	48-005	1	ROTARY PAPERGATE.
19	602-057	1	DU BUSH - Ø12 x Ø14 x Ø20 x 7 Long
20	603-050	1	DOWEL - Ø6 x 28 Lg.
21	604-037	1	DISC SPRING - Bearing Location
22	604-061	1	SPRING - Compression.
23	604-078	1	SPRING - Compression.
24	605-041	1	SPHERICAL SEATING WASHER
25	605-043	2	THRUST WASHER - Ø5.1 x Ø9.5 x 0.75
26	617-003	5	STEEL BALL - Ø20
27	401-02-050-020	2	Screw - Pan Pozi Taptite - M5 x 20 Lg.
28	402-02-030-008	17	Screw - Csk Hd. Taptite - M3 x 8 Lg.
29	403-01-040-016	2	SCREW - Cap Hd. - M4 x 16 Lg.
30	404-01-050-012	1	Screw - Socket Countersunk - M5 x 12 Lg.
31	405-01-050-020	1	Screw - Button Hd. - M5 x 20 Lg.
32	409-01-040-006	1	Screw - Socket Set - Flat Point - M4 x 6 Lg.
33	461-01-100	1	Nut - Full - M10
34	481-050	1	Washer - Plain - M5
35	481-100	1	Washer - Plain - M10
36	94-058	1	Backstop Assy.

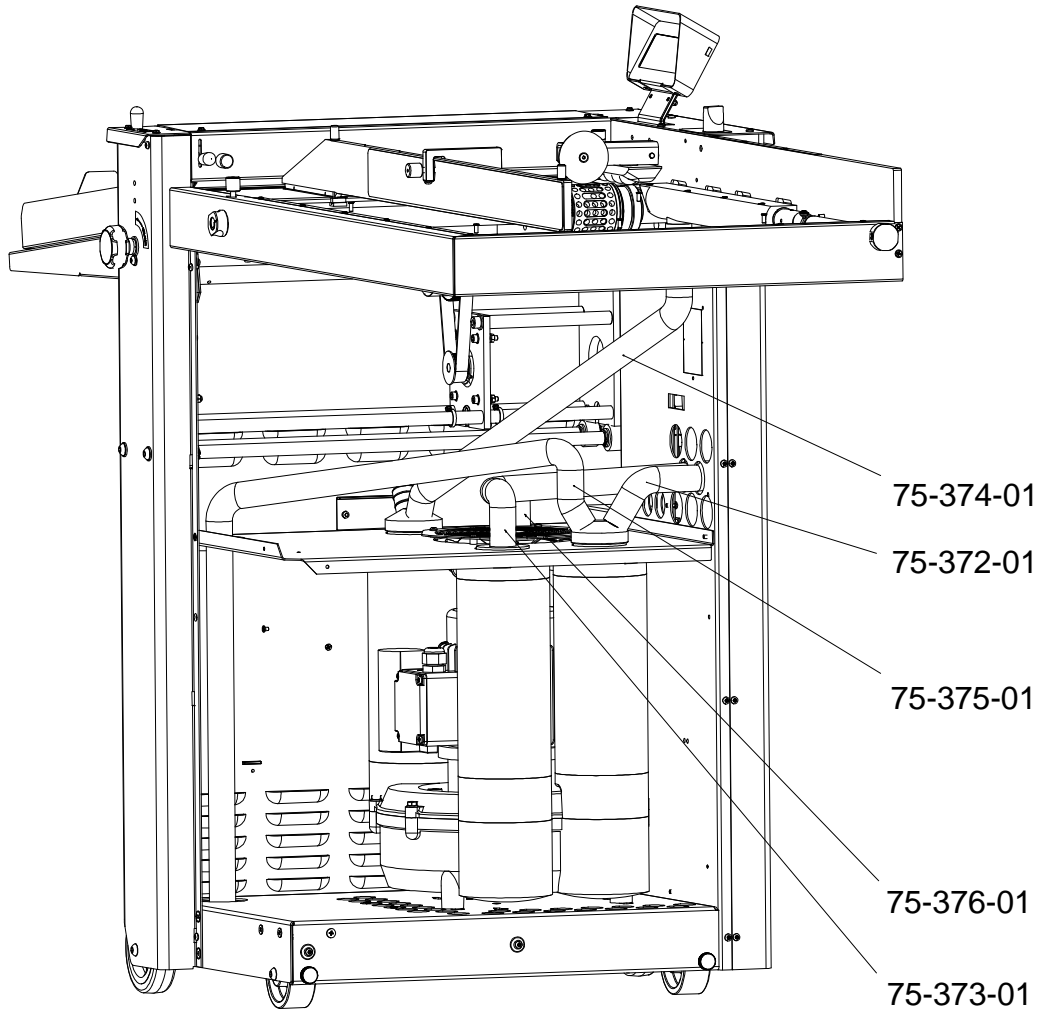


SEE PAGE 14 FOR HOSE RUNS & HOSE PART NUMBERS

ITEM NO.	PART NUMBER	QTY.	Description
1	75-293-03	1	Compressor Panel - AutoCreaser.
3	75-205-01	1	Top Cover - Service Panel
4	75-01-02	1	Control System Assy.
5	75-210-05	1	4 Line Display Unit - MK3
6	75-291-01	1	CONTROL LEG ASSY - AutoCreaser MK3.
7	75-224	1	LABEL - Autocreaser 50.
8	75-242-01	1	SERVICE PANEL
12	75-255	1	DIN Socket Assy.
16	95-030	1	LABEL - Air Separation
17	95-038	1	LABEL - Manifold Numbrs.
20	601-153	2	Snap Bushing Ø46 x Ø57.2
21	603-041	4	SPIROL SPACER - Ø4 x Ø5.65 x 4 Lg.
23	609-013	2	'O' Ring Ø25 x Ø2.5
26	613-255	1	SOLENOID COIL
28	401-02-040-008	25	Screw - Pan Pozi Taptite - M4 x 8 Lg.
29	401-02-040-010	6	Screw - Pan Pozi Taptite - M4 x 10 Lg.
30	402-02-040-008	5	Screw - Csk Hd. Taptite - M4 x 8 Lg.
31	403-01-050-035	3	Screw - Socket Cap Head - M5 x 35 Lg.
32	405-01-060-012	2	Screw - Button Hd. - M6 x 12 Lg.
33	401-02-050-012	2	Screw - Pan Pozi Taptite - M5 x 12 Lg.
34	73-01-01	1	Plunger Valve Assembly
35	73-02-01	1	Air Control Block Assembly
36	75-333-01	1	EMC Blanking Plug

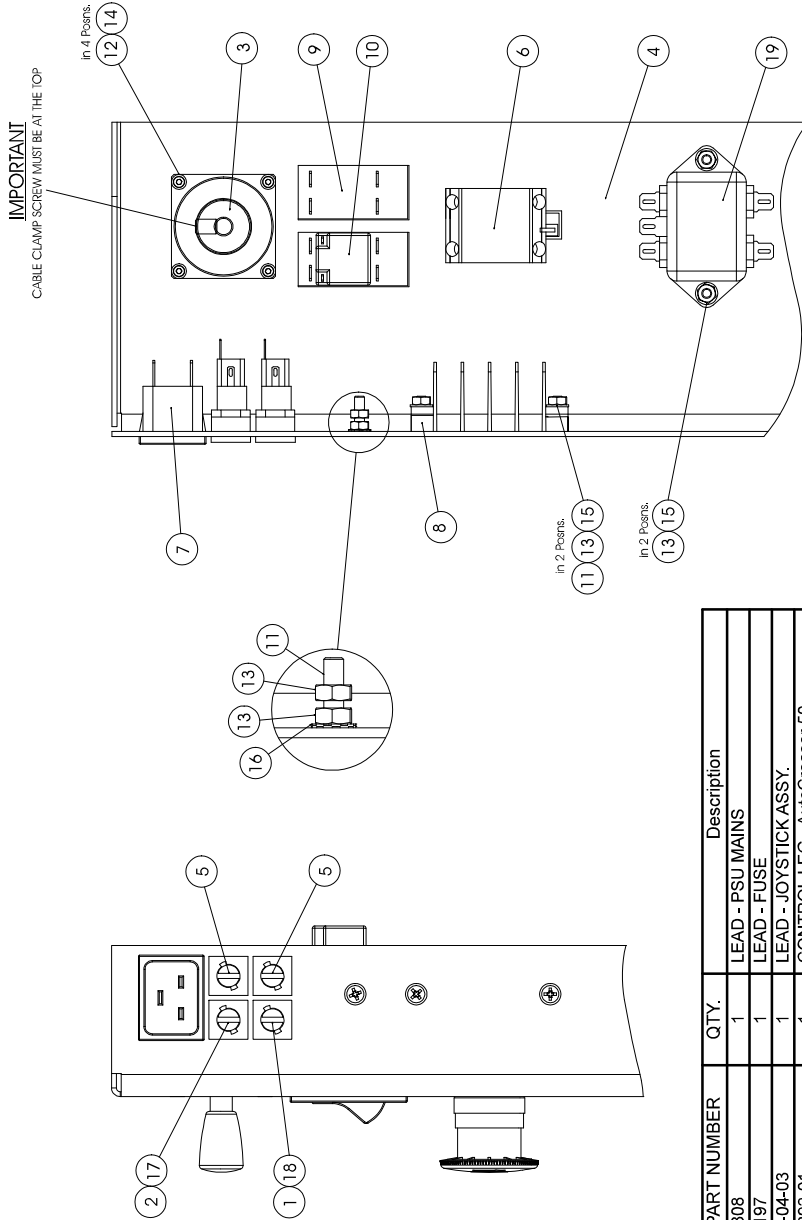
4

4



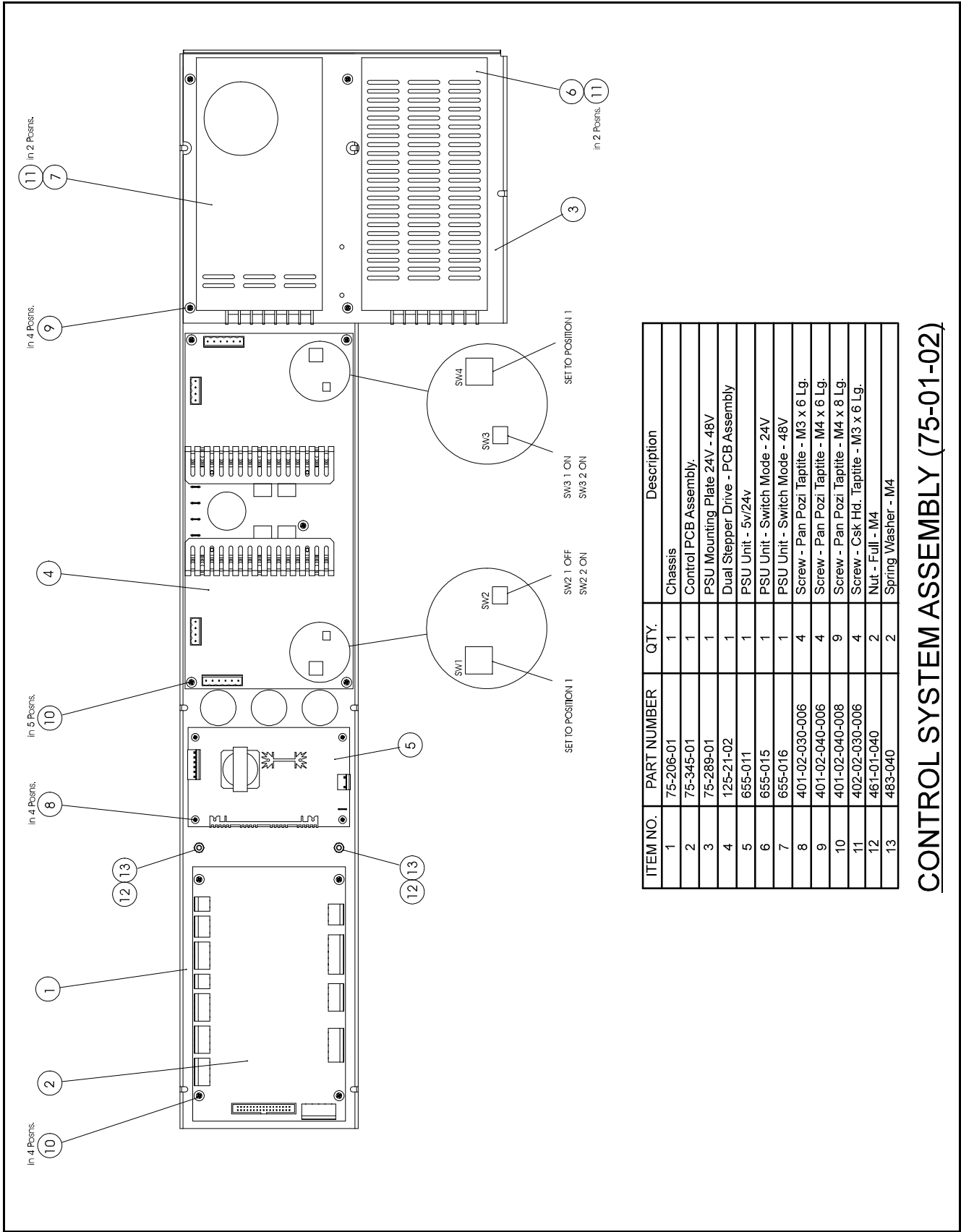
INTERNAL VIEW SHOWING HOSE RUNS & HOSE PART NUMBERS

BLANK
PAGE



75-291-01
(Control Leg Assembly)

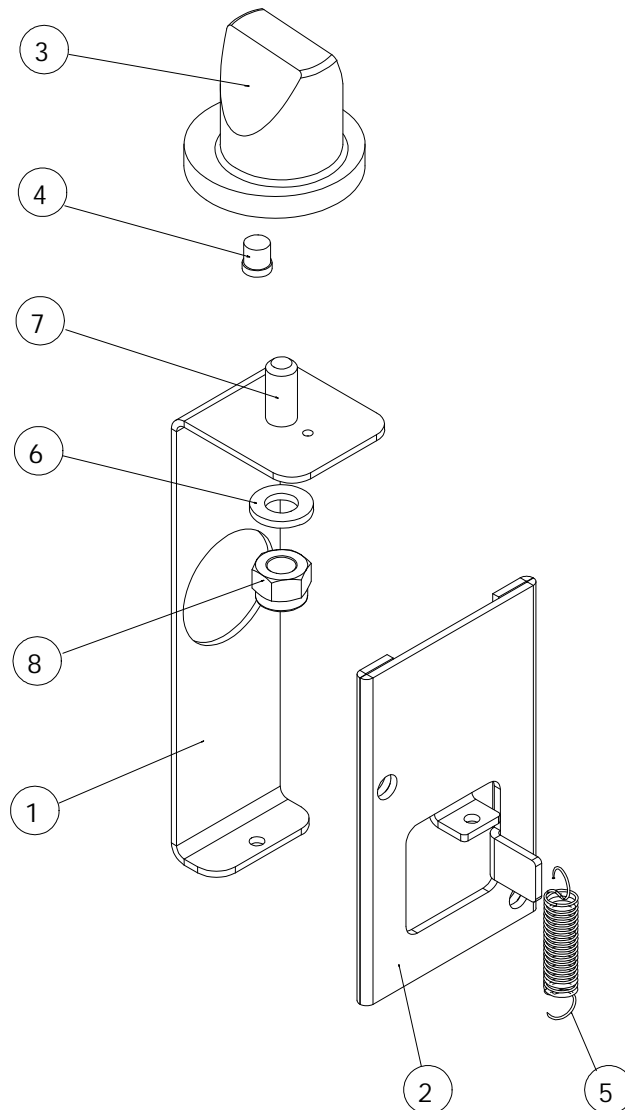
ITEM NO.	PART NUMBER	QTY.	Description
1	75-308	1	LEAD - PSU MAINS
2	75-197	1	LEAD - FUSE
3	144-04-03	1	LEAD - JOYSTICK ASSY.
4	75-292-01	1	CONTROL LEG - AutoCreser 50.
5	613-352	2	FUSE HOLDER - Ø5 x 20
6	613-365	1	EMERGENCY STOP SWITCH - Double Pole.
7	651-101	1	Mains Inlet - 20A
8	651-109	1	Tab Terminal Block - 4 way
9	652-009	1	SWITCH - Compressor. (UK)
	652-010	1	SWITCH - Compressor. (USA)
10	652-011	1	SWITCH - System.
11	402-02-040-016	3	Screw - Csk Hd. Tapite - M4 x 16 Lg.
12	403-01-025-008	4	SCREW - Cap Hd. - M2.5 x 8 Lg.
13	461-01-040	6	NUT - Full - M4
14	481-025	4	WASHER - Plain - M2.5
15	481-040	4	WASHER - Plain - M4
16	485-040	1	Washer - Shakeproof - M4
17	613-023	1	Fuse - 3.15A - 20mm x 5mm - FAST BLOW
18	681-015	1	Fuse - 4.0A - 20mm x 5mm - ANTI-SURGE
19	680-009	1	Mains Filter



ITEM NO.	PART NUMBER	QTY.	Description
1	75-206-01	1	Chassis
2	75-345-01	1	Control PCB Assembly.
3	75-289-01	1	PSU Mounting Plate 24V - 48V
4	125-21-02	1	Dual Stepper Drive - PCB Assembly
5	655-011	1	PSU Unit - 5v/24v
6	655-015	1	PSU Unit - Switch Mode - 24V
7	655-016	1	PSU Unit - Switch Mode - 48V
8	401-02-030-006	4	Screw - Pan Pozi Tapitite - M3 x 6 Lg.
9	401-02-040-006	4	Screw - Pan Pozi Tapitite - M4 x 6 Lg.
10	401-02-040-008	9	Screw - Pan Pozi Tapitite - M4 x 8 Lg.
11	402-02-030-006	4	Screw - Csk Hd. Tapitite - M3 x 6 Lg.
12	461-01-040	2	Nut - Full - M4
13	483-040	2	Spring Washer - M4

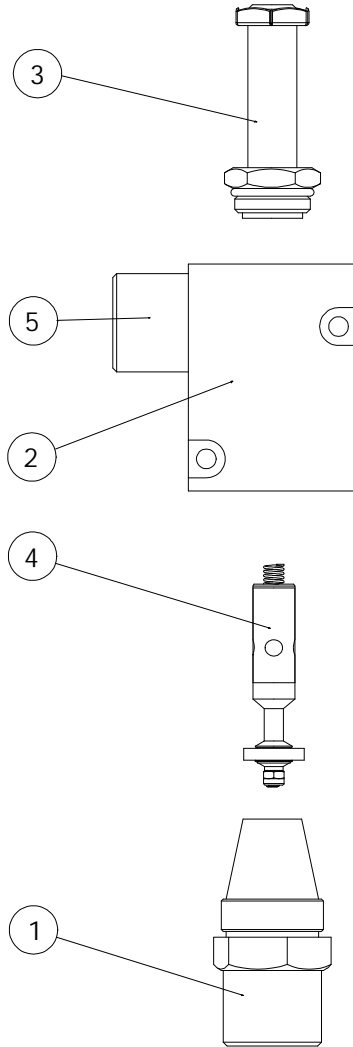
CONTROL SYSTEM ASSEMBLY (75-01-02)

4



ITEM No.	PART No.	QTY.	Description
1	71-056-01	1	SLIDING VALVE PLATE
2	71-057-01	1	VALVE GUIDE PLATE
3	71-060-01	1	VALVE PLATE KNOB
4	601-160	1	SPRING PLUNGER - PRESS IN
5	604-093	1	SPRING - EXTENSION
6	605-021	1	THRUST WASHER - Ø8 x Ø15.88 x 0.79
7	409-01-060-025	1	SCREW - SOCKET SET - FLAT PT. - M6 x 25 LG.
8	464-01-060	1	NUT - NYLOC - M6

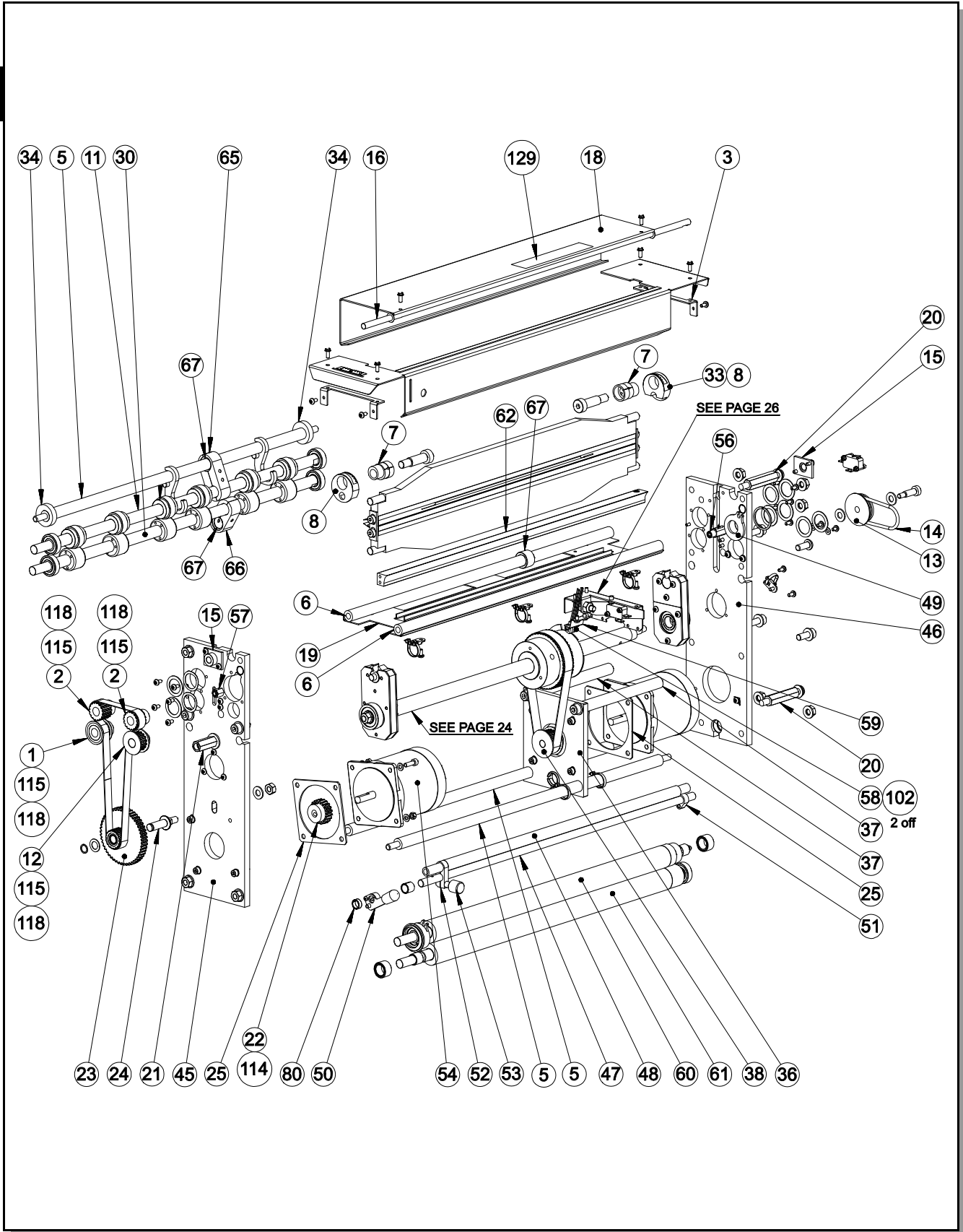
73-01-01 (Plunger Valve Assembly)



ITEM No.	PART No.	QTY.	Description
1	95-011	1	SOLENOID VALVE SEAT (50Hz) (UK).
	95-136	1	SOLENOID VALVE SEAT (60Hz) (USA).
2	95-012	1	SOLENOID VALVE BLOCK
3	613-136	1	TUBE & NUT ASSY.
4	613-137	1	SPRING & PLUNGER ASSY. - Mk2.
5	71-061-01	1	VALVE BLOCK PORT ADAPTOR

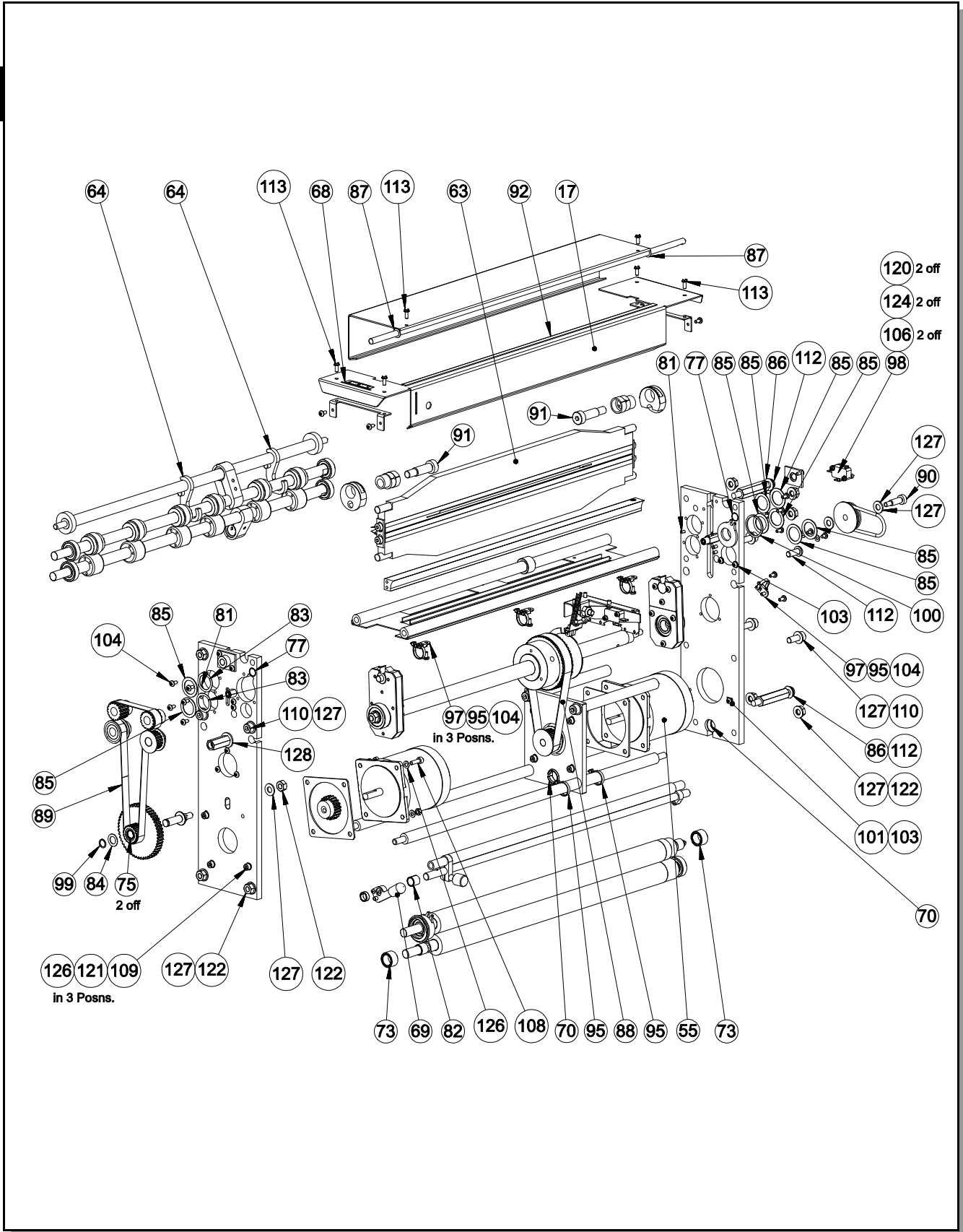
73-02-01
(Suction Valve Assembly)

5



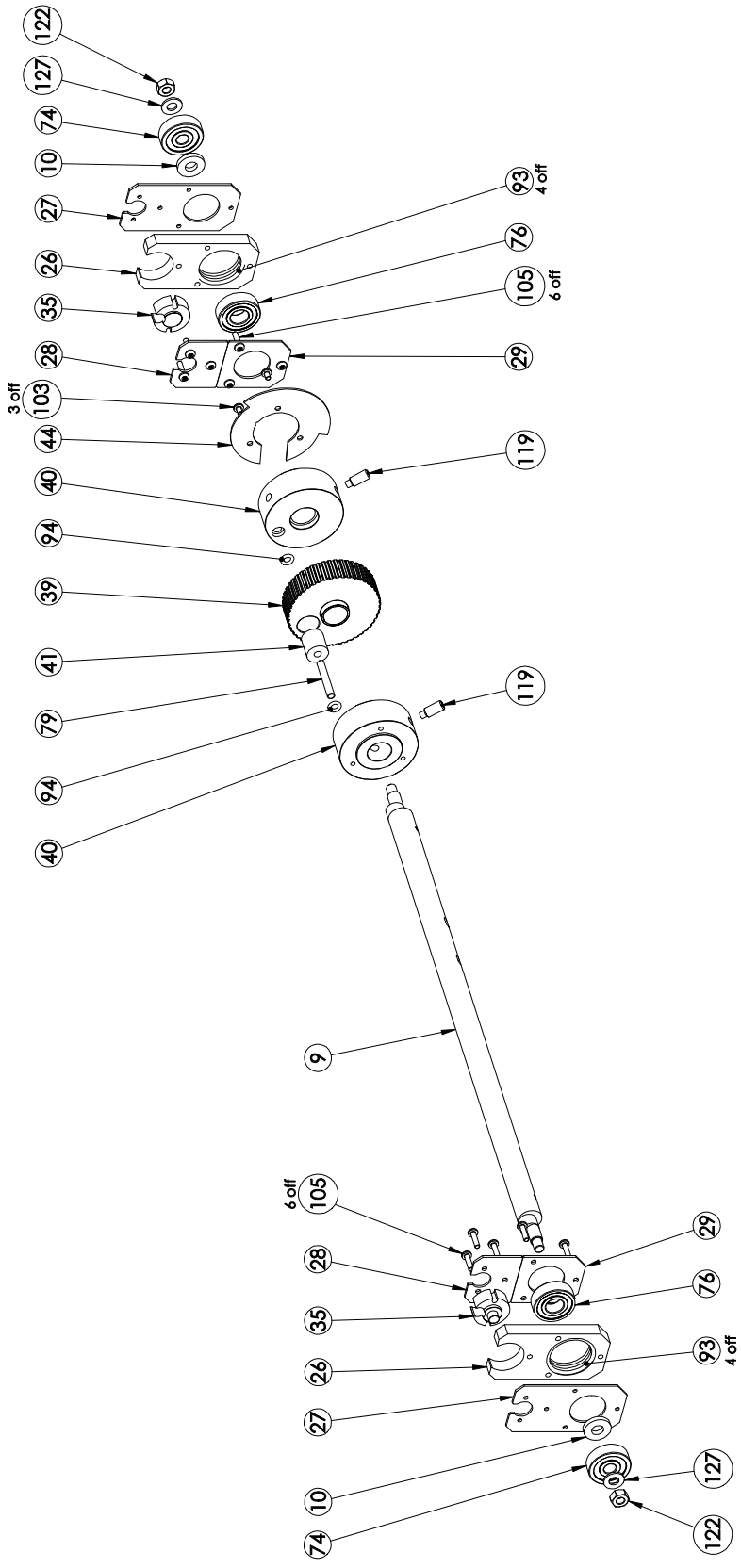
ITEM NO.	PART NUMBER	QTY.	Description
1	56-003-02	1	TIMING PULLEY Wide - 16XL - Flanged.
2	56-004-02	2	TIMING PULLEY - 16XL - Un-Flanged.
3	71-012-02	2	COVER BRACKET - Mk2.
5	76-003-02	3	TIE BAR - AutoCreaser - Wide.
6	76-004-02	2	TIE BAR - Female - AutoCreaser - Wide.
7	76-011	2	BLADE ADJUSTMENT CAM.
8	76-012	2	ADJUSTMENT DISK - AutoCreaser
11	76-250-02	1	UPPER OUTPUT SHAFT ASSY - A/C50.
12	76-034-06	1	TIMING PULLEY - 16XL - Short Hub.
13	76-040-02	1	Cord Pulley - Drive - F8
14	76-042	1	DRIVE BELT - Feed Bed
15	76-047	2	LOCK NUT - Blade Cam.
16	76-049-03	1	Hinge Shaft - Wide
18	76-051-03	1	EXIT GUARD - AutoCreaser - Wide
19	76-052-04	1	Splash Guard - Wide
20	76-053-02	2	HINGE PILLAR
21	76-054-03	1	TILT PILLAR - AutoCreaser MK3
22	76-062-04	1	STEPPER PINION - 20T AutoCreaser 50
23	76-063-03	1	STEPPER IDLER - 50T Gear / 16XL Pulley.
24	76-064-02	1	IDLER STUD - AutoCreaser 50.
25	76-065	2	STEPPER SHIM
30	76-251-02	1	LOWER OUTPUT SHAFT ASSY - A/C50.
33	76-101	1	LABEL - Blade Adjustment.
34	76-105	2	BUFFER - Exit Guard.
36	76-121-01	1	MTG. PLATE - Stepper Motor.
37	76-122-01	2	TIE BAR - Female.
38	76-123-01	1	TIMING PULLEY - 20XL - Wide Flanged.
45	76-142-01	1	SIDE PLATE - Op. Side - (Input Gap Set)
46	76-142-02	1	SIDE PLATE - Lay Side (Input Gap Set)
47	76-143-01	1	Gap Control Shaft
48	76-144-02	1	Female Tie Bar - Single Gap Control (Wide)
49	76-145-02	1	GAP CONTROL HUB - Lay Side.
50	76-148-01	1	GAP SET LEVER ASSY. - Op. Side.
51	76-148-02	1	GAP SET LEVER ASSY. - Lay. Side.
52	76-149-01	1	Locking Link - Gap Control
53	76-150-01	1	Locking Knob - Gap Control
54	76-152	1	DRIVE MOTOR & LEAD ASSY.
56	76-154	1	LEAD - Dual Sensor Assy.
57	76-155	1	LEAD - Paper Jam Sensor.
58	76-156	1	BLADE POSITION SENSOR
59	76-163-01	1	Slot Detector Bracket - Wide
60	76-203-05	1	INPUT ROLLER -Upper - AutoCreaser 50.
61	76-203-06	1	INPUT ROLLER - Lower - AutoCreaser 50.
62	76-230-02	1	LEAD - Paper Guide Sensor - Wide.
65	78-060-01	1	PERF. SHAFT SUPPORT BLOCK ASSY - Top.
66	78-060-02	1	PERF. SHAFT SUPPORT BLOCK ASSY - Bottom
67	78-062-01	2	ECCENTRIC Perf Shaft - Top.
80	603-078	1	SPIROL SPACER - Ø10 X Ø13 X 6.5 Lg.
102	401-02-030-006	2	Screw - Pan Pozi Taptite - M3 x 6 Lg.
114	407-01-050-006	1	Screw - Socket Set Knurled - M5 x 6 Lg.
115	409-01-040-004	4	Screw - Socket Set - Flat Point - M4 x 4 Lg.
118	411-01-040-006	4	Screw - Socket Set - Dog Point - M4 x 6 Lg.
129	123-059	1	LABEL - Safety Warnings

5



ITEM NO.	PART NUMBER	QTY.	Description
17	76-050-04	1	Entry Gaurd MK3 - Wide
55	76-153	1	BLADE MOTOR & LEAD ASSY.
63	76-237-02	1	BLADE SET - 490 Wide Std. Groove.
64	78-013	2	PERFORATOR STRIPPER ASSEMBLY.
68	96-053	1	Label - Roller Tilt
69	601-111	1	Tapered Ferrule
70	601-124	2	HOLE BUSHING - Split - Ø19.
73	602-056	2	BEARING - Dawn Cup Needle Roller - HK1512
75	602-085	2	BEARING - Drawn Cup Needle Roller - HK1010
77	602-133	2	DU Bush - Ø10 x (Ø12) x 10 Lg.
81	603-089	2	Spirol Coiled - Ø3 x 16 Lg.
82	603-093	1	SPIROL SPACER - Ø10 X Ø13 X 12 Lg.
83	604-071	2	Waved Washer - Ø21 x Ø27.5 x 3.0
84	605-002	1	NYLON WASHER - Ø10.69 X17.45 X 0.79
85	605-052	8	SUPPORT WASHER - Ø12
86	605-055	2	WASHER - Self Aligning
87	605-056	2	THRUST WASHER - Ø12.7 x Ø8.00 x 0.81
88	607-042	1	TIMING BELT - 160XL - 15.
89	607-048	1	TIMING BELT
90	608-001	1	Shoulder Bolt - Ø8(M6) x 20 Lg.
91	608-019	2	Shoulder Bolt - Ø12(M10) x 30 Lg.
92	609-009	1	EDGING STRIP.
95	613-027	6	TIE WRAP - Small.
97	613-339	4	CABLE TIE MOUNTING
98	613-351	1	MICROSWITCH
99	615-043	1	RETAINING RING - External - Ø10
100	615-067	1	RETAINING RING - External - Ø30
101	651-031	1	TERMINAL STRIP - 45° - Single
103	401-02-040-006	10	Screw - Pan Pozi Taptite - M4 x 6 Lg.
104	401-02-040-008	31	Screw - Pan Pozi Taptite - M4 x 8 Lg.
106	403-01-030-016	3	Screw - Socket Cap Head - M3 x 16 Lg.
108	403-01-050-016	1	Screw - Socket Cap Head - M5 x 16 Lg.
109	403-01-050-025	7	Screw - Socket Cap Head - M5 x 25 Lg.
110	403-01-080-020	7	Screw - Socket Cap Head - M8 x 20 Lg.
112	405-01-080-020	3	Screw - Button Hd. - M8 x 20 Lg.
113	406-01-040-006	6	SCREW - Tamperproof - M4 x 6 Lg
116	409-01-040-006	12	Screw - Socket Set - Flat Point - M4 x 6 Lg.
117	409-01-050-005	3	Screw - Socket Set - Flat Point - M5 x 5 Lg.
120	461-01-030	3	Nut - Full - M3
121	461-01-050	7	Nut - Full - M5
122	461-01-080	13	Nut - Full - M8
123	462-01-080	1	Half Nut - M8
124	481-030	5	Washer - Plain - M3
125	481-040	5	Washer - Plain - M4
126	481-050	15	Washer - Plain - M5
127	481-080	20	Washer - Plain - M8
128	481-100	1	Washer - Plain - M10

5

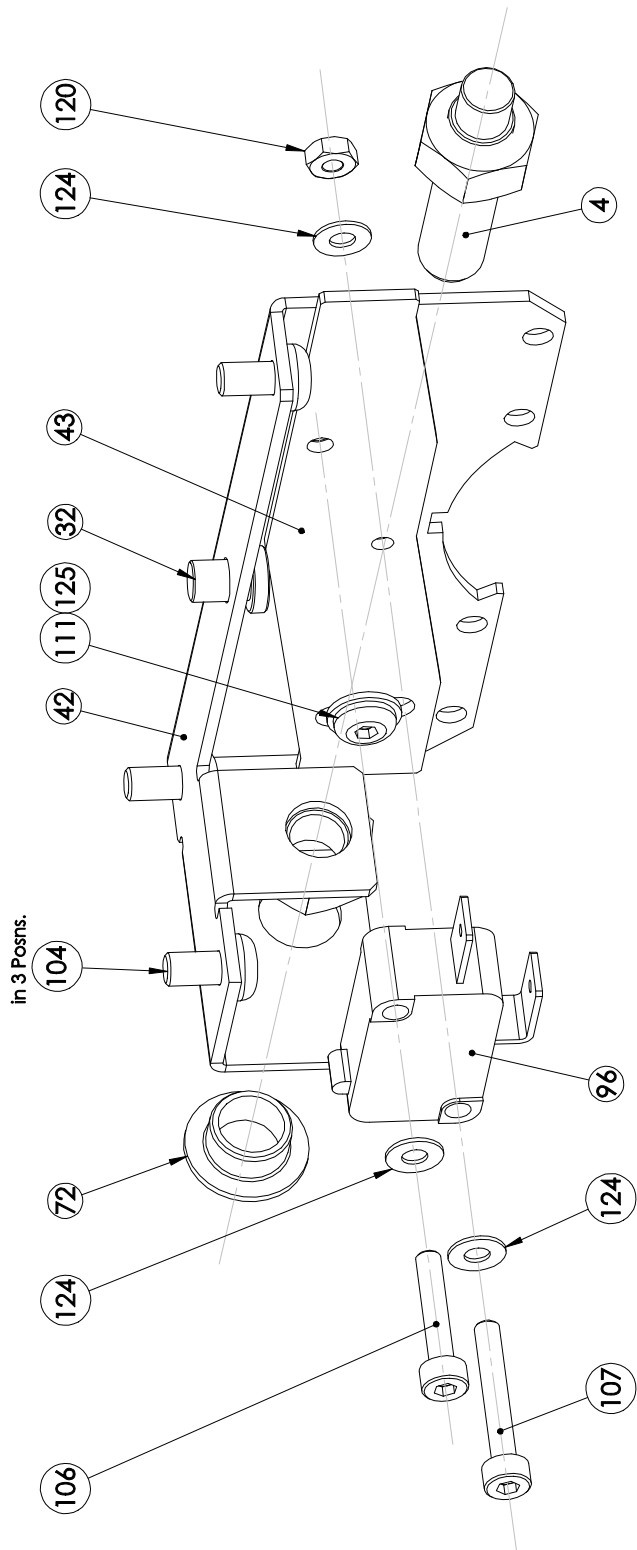


CRANKSHAFT ASSEMBLY

ITEM NO.	PART NUMBER	QTY.	Description
9	76-015-03	1	CRANK SHAFT - AutoCreaser - Wide.
10	76-016	2	SPACER - Crank Shaft.
26	76-076	2	POWER LINK - Blade Crank Shaft.
27	76-077	2	LINK PLATE - Tapped.
28	76-078	2	SHOCK RING PLATE.
29	76-079	2	LINK - Bearing Plate.
35	76-109	2	BEARING - Power Link.
39	76-125	1	PULLEY ASSY. - Crankshaft.
40	76-126	2	TORSION HUB - AutoCreaser.
41	76-127	1	Torsion Bush
44	76-134-02	1	DISK - Slot Detector.
74	602-082	2	BEARING-DEEP GROOVE BALL - 6300-ZZ
76	602-086	2	BEARING-Deep Groove Ball - 6202-ZZ
79	603-071	1	DOWEL - Ø6 x 40 Lg.
93	609-022	8	O'Ring.
94	609-024	2	O'Ring.
103	401-02-040-006	3	Screw - Pan Pozi Taptite - M4 x 6 Lg.
105	401-02-040-016	12	Screw - Pan Pozi Taptite - M4 x 16 Lg.
119	411-01-080-020	2	Screw - Socket Set - Dog Point - M8 x 20 Lg.
122	461-01-080	2	Nut - Full - M8
127	481-080	2	Washer - Plain - M8

5

5

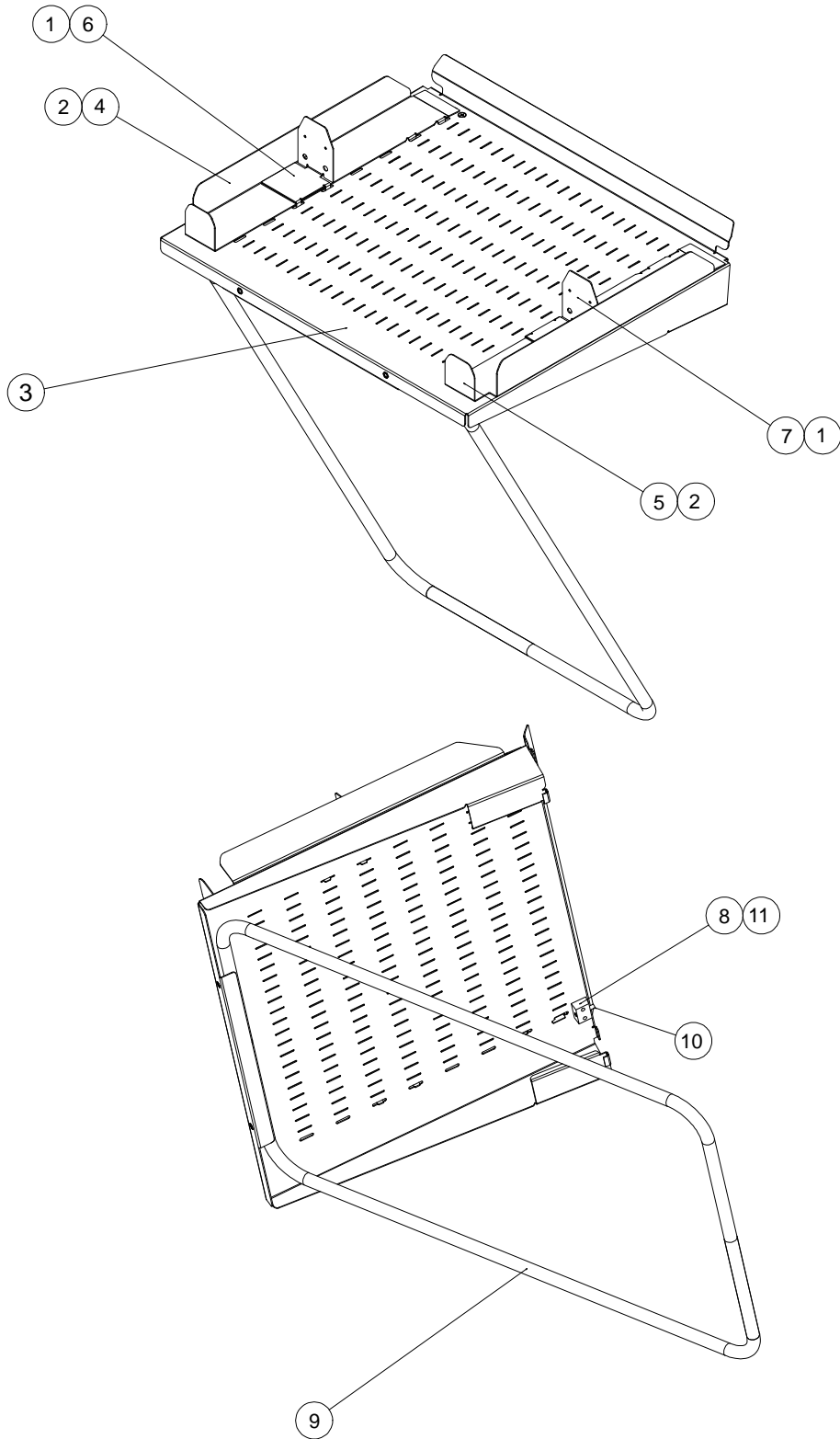


SWITCH BRACKET ASSEMBLY

ITEM NO.	PART NUMBER	QTY.	Description
4	75-040	1	STACKER SWITCH ASSY.
32	76-086-03	1	SHOULDERED PAD - AutoCreaser.
42	76-131	1	BRACKET - Combined Switch.
43	76-132	1	ADJUSTER PLATE - V3 MicroSwitch.
72	602-054	1	EP Bush - Ø8 x Ø10 x Ø15 x 5.5
96	613-191	1	MICROSWITCH
104	401-02-040-008	3	Screw - Pan Pozi Taptite - M4 x 8 Lg.
106	403-01-030-016	1	Screw - Socket Cap Head - M3 x 16 Lg.
107	403-01-030-020	1	Screw - Socket Cap Head - M3 x 20 Lg.
111	405-01-040-006	1	Screw - Button Hd. - M4 x 6 Lg.
120	461-01-030	1	Nut - Full - M3
124	481-030	3	Washer - Plain - M3
125	481-040	1	Washer - Plain - M4

5

6



ITEM NO.	PART NUMBER	QTY.	Description
1	78-008	2	Magnetic Pad
2	78-009-03	2	Magnetic Strip
3	78-017-01	1	Stacker Bed
4	78-031-02	1	Stacker Guide - LH - Screened
5	78-032-01	1	Stacker Guide RH
6	78-033-01	1	Stacker Backstop - LH
7	78-033-02	1	Stacker Backstop - RH
8	78-034-01	1	Actuator Mounting Block
9	16-029-02	1	Hoop Strut - Conveyor
10	601-079	1	Magnet
11	402-02-050-010	2	Screw - Csk Hd. Taptite - M5 x 10 Lg.