

Standard EasyCreasePro Channel Creaser

Instruction Manual

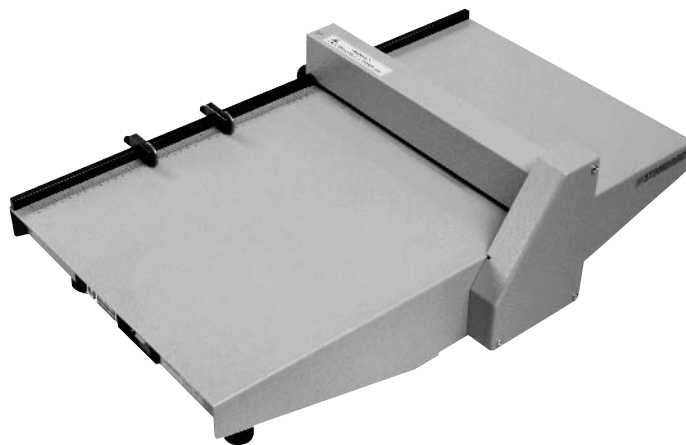


Provided By

MyBinding.com®
When Image Matters.

EasyCreasePro™

Standard
EasyCreasePro 14
Channel Creaser
Operators Guide



This document contains information that is the sole property of Standard Duplicating Machines Corporation. No part of this document may be reproduced by any means whatsoever without prior written approval of Standard Duplicating Machines Corporation. Requests for additional copies will be gladly accommodated. You may contact Standard from 8:30am to 5:00pm, Monday through Friday, except on holidays at:

Standard Duplicating Machines Corporation
10 Connector Road
Andover, MA 01810

Phone - 978-470-1920
Fax - 978-470-2771
www.sdmc.com

EasyCrease^{Pro} Operator Guide
Copyright: April 2005
Standard Duplicating Machines Corporation
Andover, Massachusetts, 01810 USA

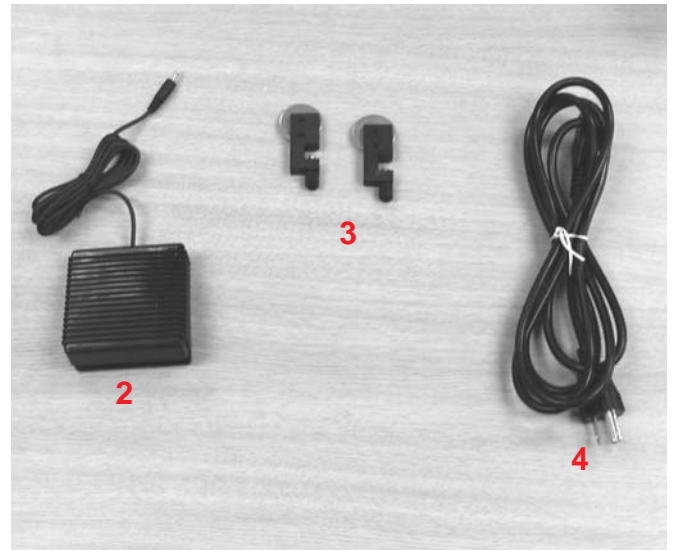


SPECIFICATIONS

EasyCreasePro 14

Process:	Channel-creasing (anvil/die stamping)
Operation:	Single sheet, electric semi-automatic
Cycle Time (approx):	3 seconds/crease
Maximum Sheet Width:	14.5"
Maximum Paper Weight:	14 point cover
Maximum Score Width:	14.125"
Minimum/Maximum Speed Stop Positions:	1.1"/17.18"
Crease Widths:	1.6mm, 1.2mm selectable
Scale Delineation:	Inches (1/16"); Metric (1mm)
Standard Equipment:	(2 ea.) Multi-position Speed Stops, Foot Pedal with Cord, Power Cord
Accessories:	Speed-stop (paper stop)
Dimensions:	29"L x 19"W x 8.5"H
Weight/Shipping Wght:	49 lbs./ 52 lbs.
Power:	120V, 60Hz, 1A

PACKING LIST & COMPONENT LOCATION

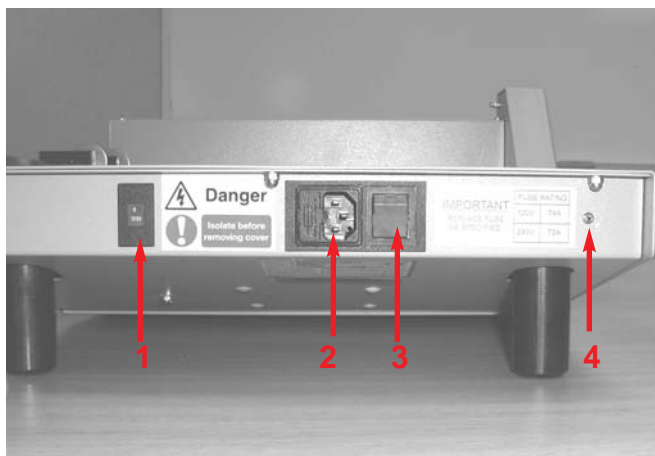


1. EasyCreasePro™

2. Foot Pedal

3. Speed Stops (2)

4. Power Cord



1. Voltage select switch (set to 125V)

2. Power cord receptacle

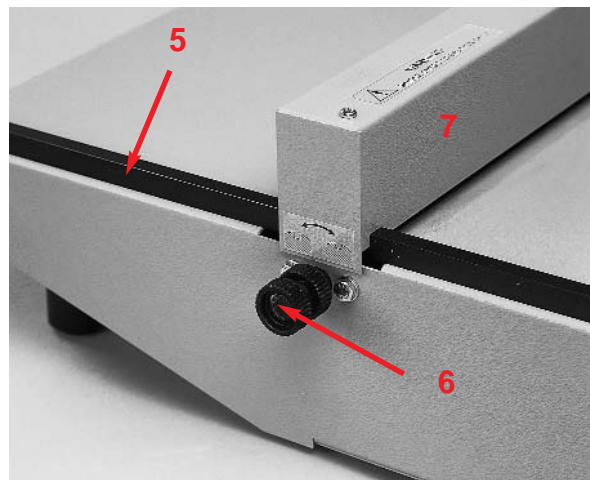
3. Main power switch

4. Foot pedal receptacle

5. Side lay

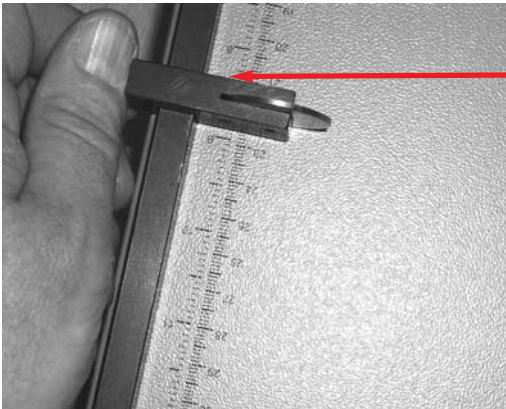
6. Crease width selector

7. Creasing head



GETTING STARTED

1. Ensure that voltage select switch is set to 125V
2. Insert foot pedal cord into foot pedal receptacle
3. Switch main power switch to on position
4. Position speed stops on side lay by loosening thumb-screw



Position edge of *Speed-Stop* assembly with appropriate mark on scale as shown.

Note: *Scale is calibrated to edge of speed stops. If placing stock without using speed stops, to set point on scale add 1/8" to desired dimension. Example: Crease desired to be placed at 5 1/2", stock is to be positioned at 5 5/8".*

Additional speed stops sold separately.

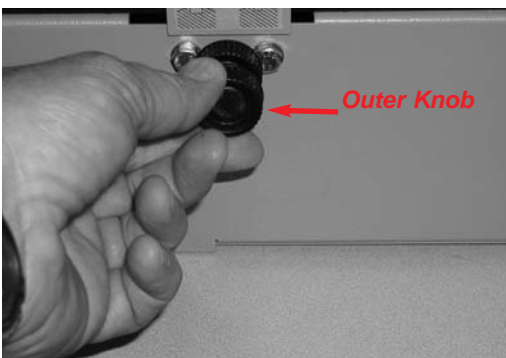
SELECTING CREASE WIDTH



1. Determine if current position is for regular or narrow crease. The EasyCreasePro comes from the factory set to the narrow position.

2. Loosen inner knob

3. If changing from narrow to wide crease, rotate outer knob 1/4 turn counter-clockwise. If changing from wide to narrow crease turn outer knob 1/4 turn counter-clockwise.



4. Turn the inner knob to slightly tighten it and activate the EasyCreasePro via the foot pedal to align the anvil and die.

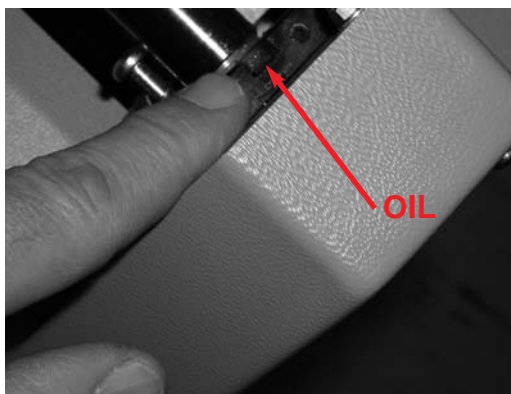
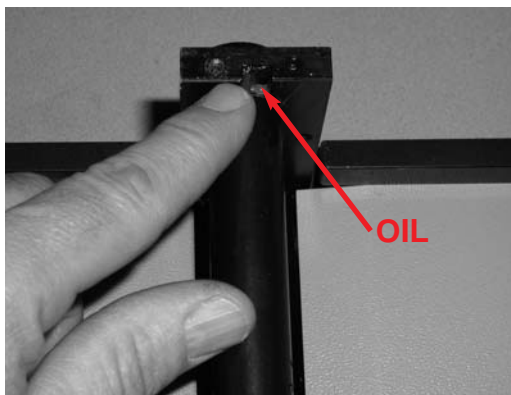
5. Tighten inner knob.

Note: *In some instances turning more than 1/4 turn will rotate the die mechanism too far so that neither width position will be selected. In such cases loosen the inner knob and rotate outer knob 3/4 turn more until a click or latching is heard. A soft click indicates that the anvil and die are 180° out of position, a harder click indicates that the items are set correctly.*

OPERATION



MAINTENANCE



1. Insert stock into gap under creasing head.
2. Align left edge of stock with washer on speed stop that contacts the table and align back edge against side lay.
3. Depress foot pedal.

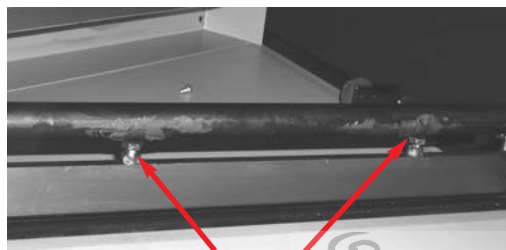
Second Crease

Note: If it is intended to make more than one crease per sheet; perform the crease that is the longest distance from creasing head first.

4. Slide stock to right past speed stop and then left to meet speed stop washer. Ensure the back edge of stock is against side lay.
5. Depress foot pedal

LUBRICATION MUST BE PERFORMED MONTHLY!

1. Switch off main power and disconnect cord from power supply.
2. Remove creasing head cover by removing 2 phillips head screws at top.
3. Apply a few drops of oil and grease as indicated.
4. Replace cover, screws and restore power.



APPLY LIBERAL AMOUNT OF PTFE OR EQUIVALENT GREASE TO HEADS OF NUTS AND SHAFT THAT CONTACTS NUTS



Standard Duplicating Machines Corporation • 10 Connector Road, Andover, MA 01810
978.470.1920 Fax 978.470.2771 www.sdmc.com

