

Standard FRN-5 / 6 Numbering Machine

Parts Manual



Provided By

MyBinding.com®
When Image Matters.



Morgana



FRN 5
**ROTARY NUMBERING
MACHINE**

ILLUSTRATED PARTS MANUAL

Morgana Systems Limited United Kingdom
Telephone: (01908) 608888 Facsimile: (01908) 692399
Website: www.morgana.co.uk

ISSUE 3 JANUARY 2009

FRN 5

ILLUSTRATED PARTS MANUAL

This Parts Manual has been designed to help you to select any part or assembly which may be required to service or repair your machine.

The following page explains some of the techniques used to help you use this manual and the index on page 5 lists all of the major assemblies in the order in which the machine was built.

Each section has at least one pair of facing pages containing an illustration and an accompanying list of parts. Some sections also have information boxes, which contain Notes, Tips, or Warnings.

The number at the top outside edge of each page identifies the assembly and should always be quoted when ordering parts or seeking technical advice.

When ordering parts you should confirm that the number at the top of the index page - which is the model number - is the same as the number stamped upon the specification plate fixed to your machine's control panel (see section 11 starting on page 30). Whilst you are checking this, you may like to take a note of the serial number which is also on this plate.

Some components - *those in italics* - are not available individually as they form part of a sub-assembly which may not be dismantled or may require specialist tooling or knowledge to do so. The machine may not perform correctly if attempts are made to repair sub-assemblies of this type.

Accessories are available to help you get the best possible use out of your machine, and they include various types of numbering head, ink rollers, and perforating blades. A full list appears in section 18 towards the end of this manual.

NOTE....

ALWAYS CONSULT THE OPERATORS MANUAL FOR YOUR MACHINE BEFORE CARRYING OUT ANY ADJUSTMENTS, AND ALWAYS DISCONNECT THE POWER SUPPLY BEFORE REMOVING ANY COVERS

USING THIS MANUAL.....

CIRCLED ITEM NUMBERS IN LISTS & ON ILLUSTRATIONS INDICATE SUB ASSEMBLIES.

ITEMS IN NORMAL TYPE ARE AVAILABLE INDIVIDUALLY AS SPARE PARTS.

ITEMS IN LOWER CASE ITALICS ARE NOT AVAILABLE INDIVIDUALLY.

21	86-020-ND	1	CORD DRIVE HUB ASSEMBLY
22	<i>86-022-4</i>	1	◆ <i>Cord Drive Hub</i>
23	<i>623-010</i>	2	◆ <i>Drawn Cup Roller Clutch - (HFL 1626)</i>
24	86-032-4	2	◆ FRICTION TYRE - UPPER
25	<i>605-037</i>	1	◆ <i>Nylon Washer - Ø10 - (041 - 3825)</i>
26	<i>602-042</i>	2	◆ <i>DU Bush - Flanged - (FMB 0809.5)</i>
27	608-014	1	SHOULDER BOLT - Ø8 x M6 x 40 LONG
28	609-007	1	'O' RING - (DRIVE BELT)
29			

ITEMS WITH A DIAMOND PREFIX ARE PART OF A SUB - ASSEMBLY.

ALTHOUGH PART OF A SUB - ASSEMBLY, (DIAMOND PREFIX) ITEMS MAY STILL BE AVAILABLE INDIVIDUALLY. (NORMAL TYPE)

NOTE....

Some sections have footnotes to explain various aspects of the parts lists and accompanying illustrations. They may also include warnings about the fitting of parts, their removal, or the need to use special tools.

TIP....

Some sections have tips to assist you in choosing spare parts for your machine or advice about keeping certain parts readily available to minimise downtime.

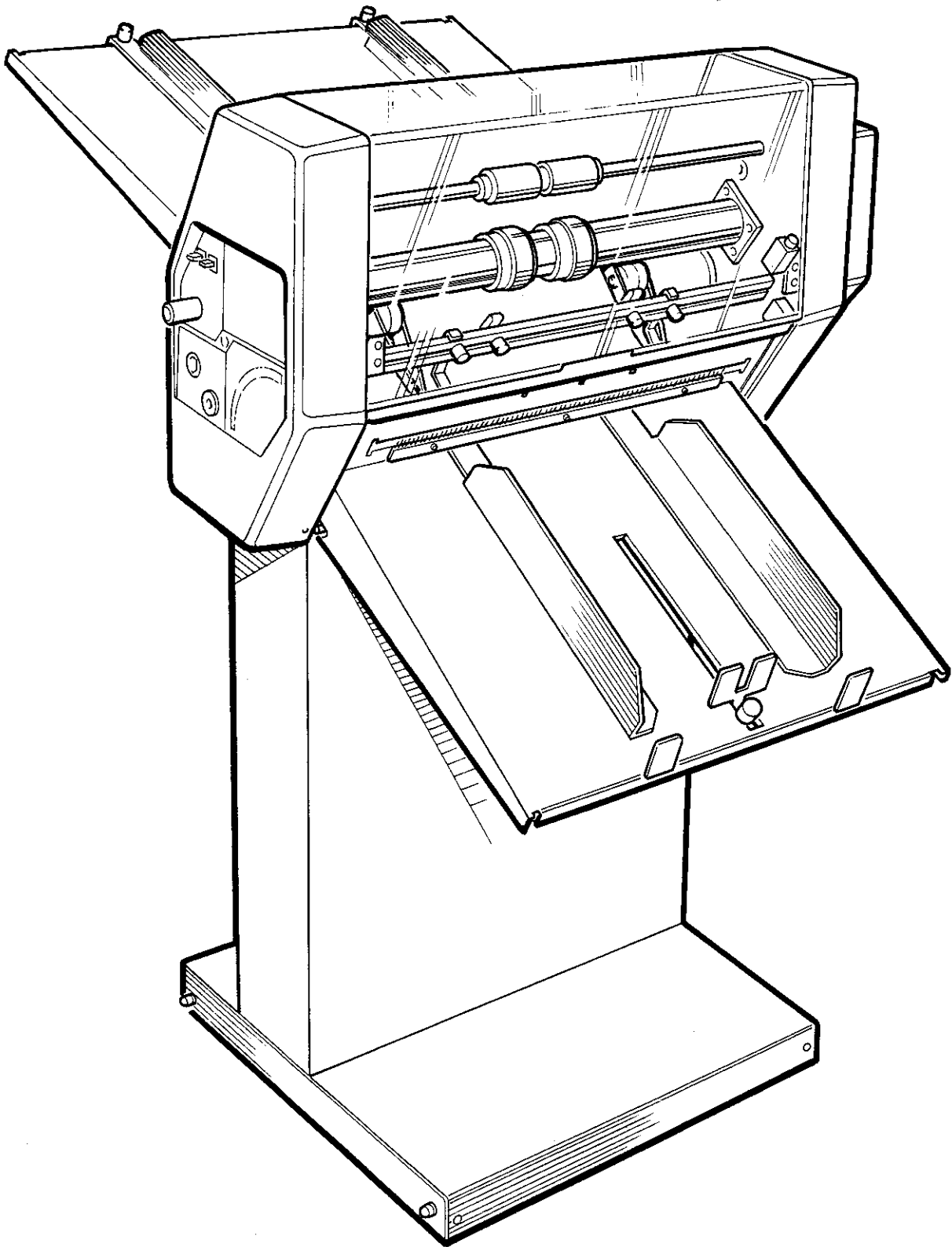
WARNING.....

SOME SECTIONS HAVE WARNING NOTICES TO ADVISE YOU ABOUT ACTIONS WHICH MAY IMPAIR YOUR MACHINES PERFORMANCE OR CAUSE UNNECESSARY DAMAGE.

80020

FRN 5 (EUROPE)

Morgana



Morgana **FRN 5**
ROTARY NUMBERING MACHINE

INDEX

SECTION	ASSEMBLY	QTY	DESCRIPTION	PAGE
1	8-05-01	1	BASE UNIT	6
2	8-01-01	1	MAIN ASSEMBLY - 50HZ	8
3	8-52-01	1	PLATEN	12
4	8-51-01	1	MAIN PRINT SHAFT - METRIC	14
5	8-61-01	1	INPUT ASSEMBLY	18
6	8-62-01	1	OUTPUT ASSEMBLY	20
7	8-31-02	1	FRICTION DRIVE	22
8	6-57-11	1	INKING SYSTEM	24
9	8-10-01	1	TRANSMISSION	26
10	6-59-12	1	PAPER CONTROL	28
11	8-04-01	1	CONTROL SYSTEM - 50HZ	30
12	8-44-01	1	■ WIRING LOOM	-
13	8-03-01	1	GUARDS	32
14	8-53-01	1	COVERS - MORGANA - FRN 5	34
15	8-09-03	1	FRICTION FEED BED	36
16	8-69-01	1	STACKER ASSEMBLY - PLAIN	38
17	8-95-01	1	DISPATCH KIT - UK	40
18	-		ACCESORIES, OPTIONS & SPARES	42

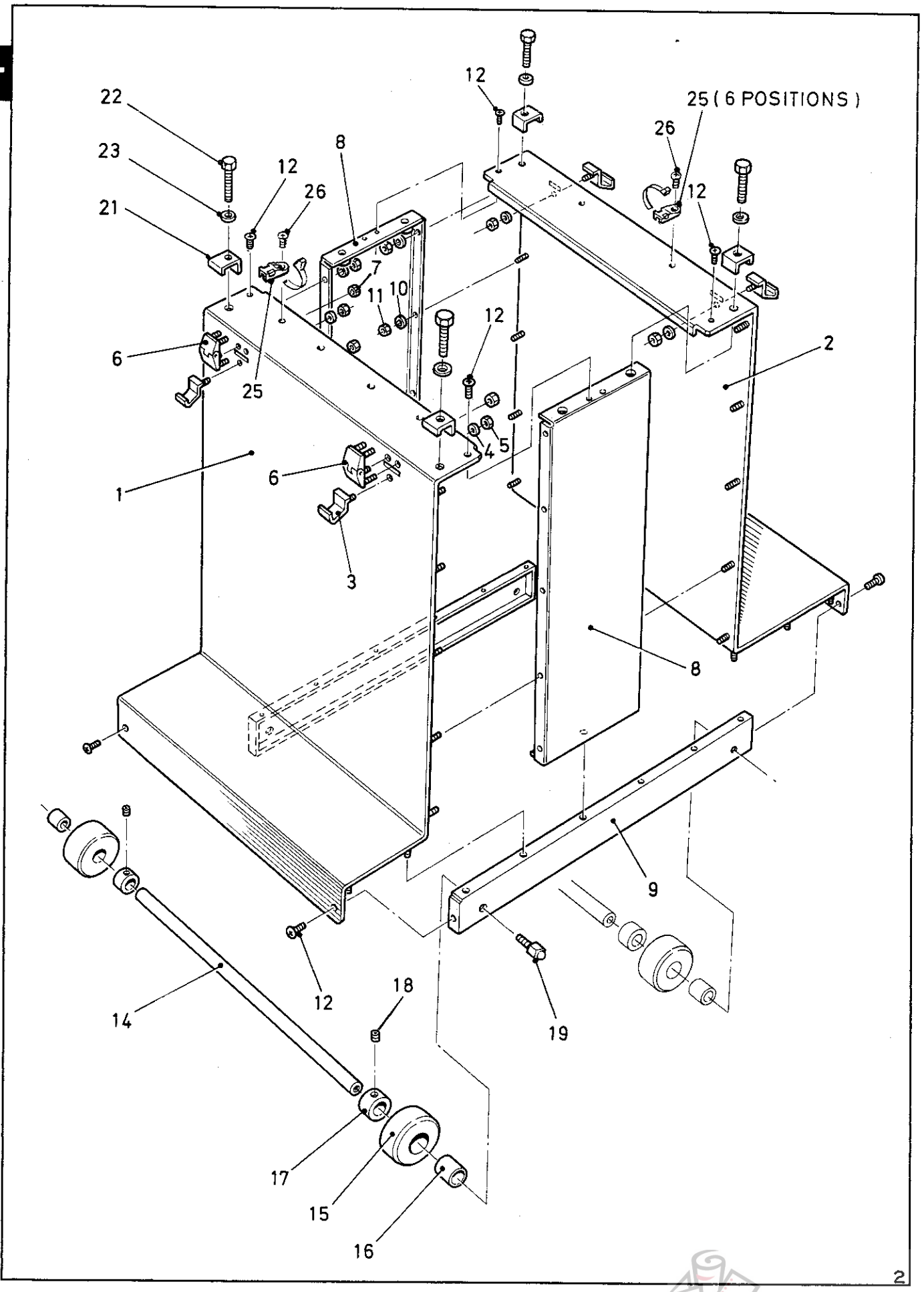
NOTE....

Section 12 (8-44-01 WIRING LOOM) is not included in this manual as it does not contain parts which can be supplied as spares. It is listed in the index for reference purposes only.

TIP....

To assist you in quickly finding the section you require, there are numbered bleed tabs positioned down the outside edges of each page, in line with the entry in the index.

1



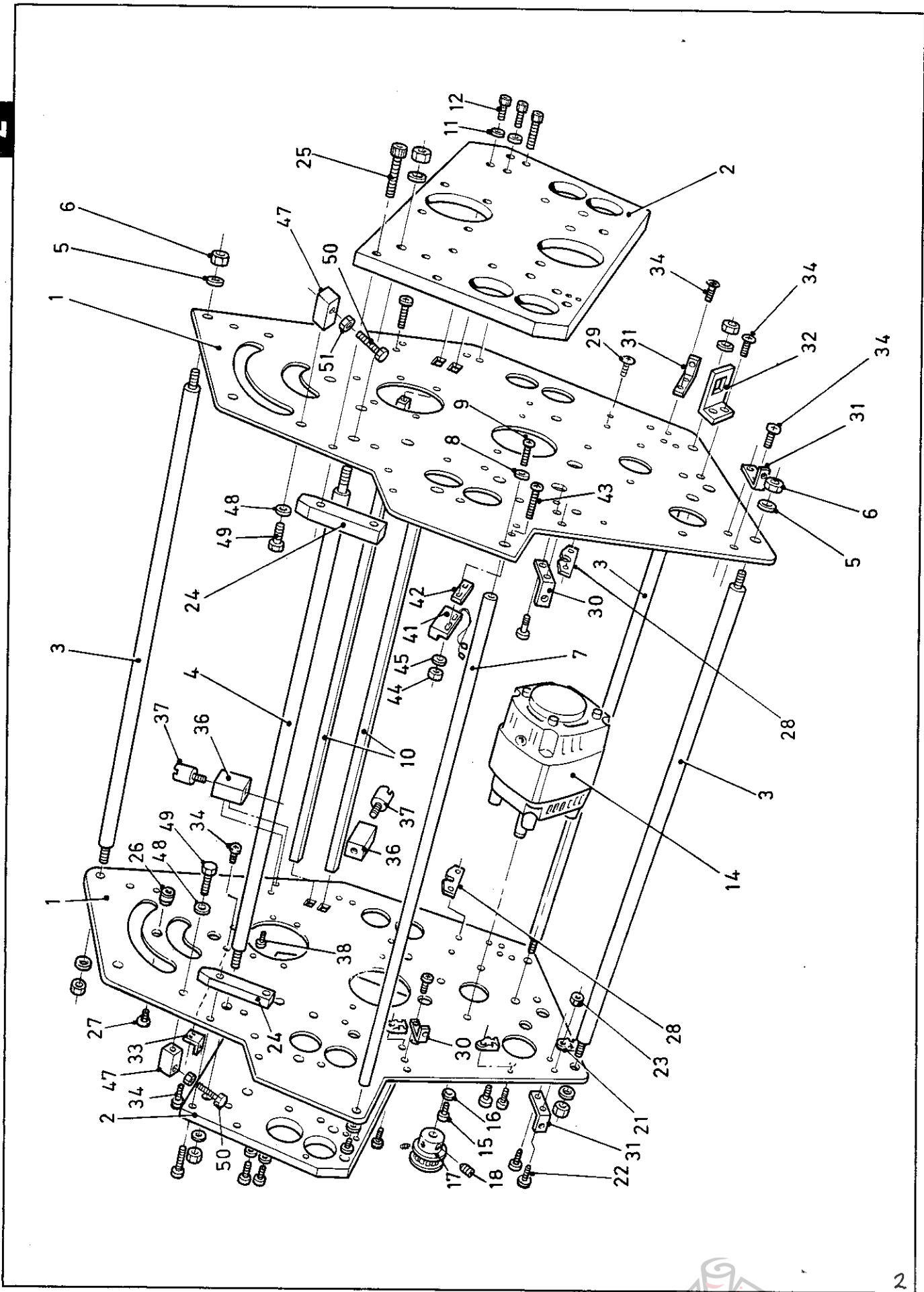
2

ITEM	PART NUMBER	QTY	DESCRIPTION
1	85-004-02-0	1	BASE SECTION - FRONT
2	85-005-02-0	1	BASE SECTION - REAR
3	85-006-02-4	4	STOWAGE HOOK
4	481-060	4	WASHER - PLAIN - M6
5	461-01-060	4	NUT - FULL - M6
6	606-019	2	HINGE - ADJUSTABLE
7	606-022	4	NUT - SPECIAL (FOR HINGE)
8	85-003-02-1	2	SIDE PANEL
9	85-002-02-2	2	SIDE CHANNEL
10	481-040	36	WASHER - PLAIN - M4
11	461-01-040	32	NUT - FULL - M4
12	401-02-040-008	8	SCREW - PAN HEAD TAPTITE - M4 x 8 LONG
13			
14	85-008-3	2	WHEEL SHAFT
15	55-009-3	4	WHEEL- NYLON - FRN
16	603-038	4	SPIROL SPACER Ø16 x 20 LONG - STANDARD
17	02-019-X	4	COLLAR
18	407-01-040-005	4	SCREW - SOCKET SET KN. - M4 x 5 LONG
19	405-01-080-016	4	SCREW - BUTTON HEAD - M8 x 16 LONG
20			
21	85-007-4	4	MACHINE CLAMP
22	414-01-080-030	4	BOLT - HEXAGON HEAD M8 x 30 LONG
23	481-080	4	WASHER - PLAIN - M8
24			
25	613-339	6	CABLE TIE MOUNTING EYELET
26	401-02-040-006	6	SCREW - PAN HEAD TAPTITE - M4 x 6 LONG
27			

2

NOTES....

2



2

ITEM	PART NUMBER	QTY	DESCRIPTION
1	82-008-1	2	SIDE FRAME PLATE
2	82-009-1	2	PRINCIPLE BEARING HOUSING
3	52-003-3	3	TIE BAR (THIN)
4	002-003-3	3	TIE BAR (THICK)
5	481-080	12	WASHER - PLAIN - M8
6	461-01-080	12	NUT - FULL - M8
7	82-007-3	1	TIE BAR - FEMALE (Ø12)
8	481-060	2	WASHER - PLAIN - M6
9	403-01-060-016	2	SCREW - CAP HEAD - M6 x 16 LONG
10	82-010-3	2	ADVANCE SHAFT
11	481-060	4	WASHER - PLAIN - M6
12	403-01-060-016	4	SCREW - SOCKET CAP HEAD - M6 x 16 LONG
13			
14	610-035	1	MOTOR - 220v - 50Hz
15	403-05-010-625	4	SCREW - CAP HEAD - # 10 / 32 UNF x 5/8" LONG
16	481-050	4	WASHER - PLAIN - M5
17	86-016-3	1	TIMING PULLEY - 16 XL FLANGED
18	407-01-040-006	2	SCREW - SOCKET SET KN - M4 x 6 LONG
19			
20			
21	613-339	3	CABLE TIE MOUNTING EYELET
22	401-02-040-010	1	SCREW - PAN HEAD TAPTITE - M4 x 10 LONG
23	461-01-040	1	NUT - FULL - M4
24	81-014-4	2	COVER SLIDE BLOCK
25	401-02-040-012	4	SCREW - PAN HEAD TAPTITE - M4 x 12 LONG
26	61-015-4	2	PLUG - INK POD SUPPORT
27	404-01-050-008	2	SCREW - SOCKET C'SUNK - M5 x 8 LONG
28	52-015-3	2	CATCH PLATE
29	401-02-040-006	4	SCREW - PAN HEAD TAPTITE - M4 x 6 LONG
30	51-039-3	2	COVER BRACKET
31	83-026-3	4	SIDE COVER BRACKET
32	81-016-3	1	CONNECTOR BRACKET
33	57-031-3	1	SPRING RETENTION BRACKET
34	401-02-040-008	15	SCREW - PAN HEAD TAPTITE - M4 x 8 LONG

2

②

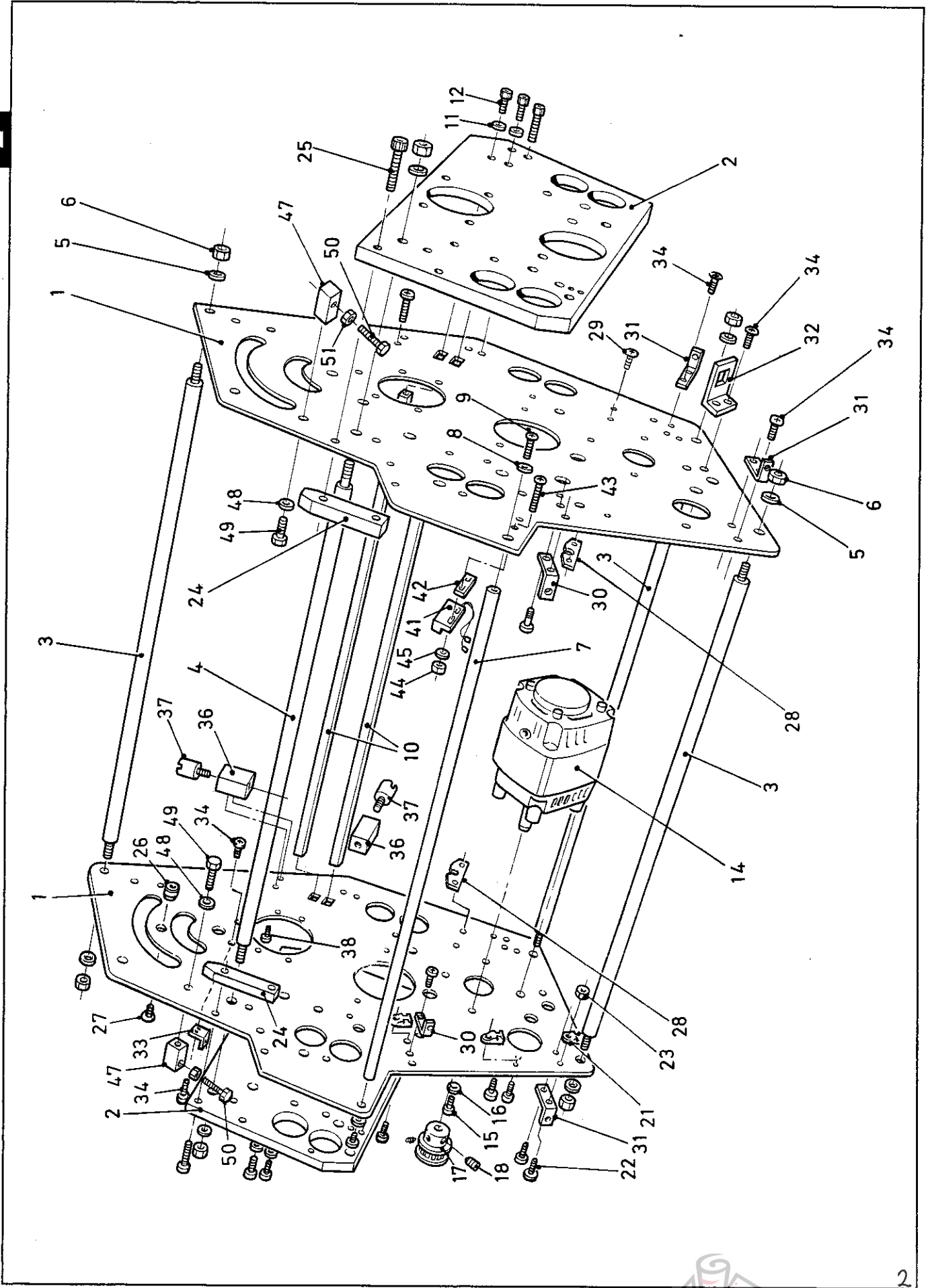
NOTES....

THIS SECTION IS CONTINUED ON THE FOLLOWING PAGES 

NUMBERER

PAGE 9

2



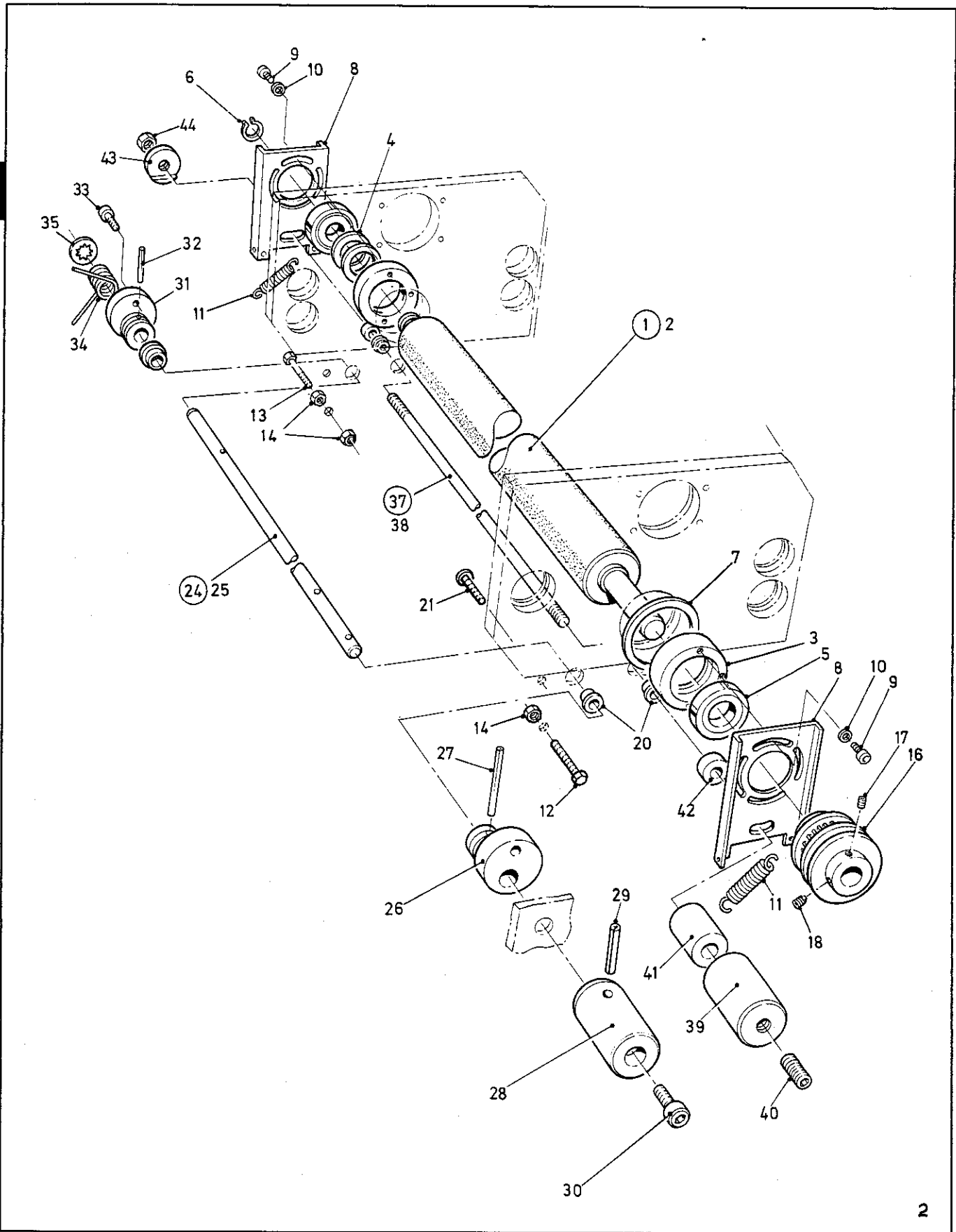
2

↩ THIS SECTION IS CONTINUED FROM THE PREVIOUS PAGE

ITEM	PART NUMBER	QTY	DESCRIPTION
21	613-339	3	CABLE TIE MOUNTING EYELET
22	401-02-040-010	1	SCREW - PAN HEAD TAPTITE - M4 x 10 LONG
23	461-01-040	1	NUT - PLAIN - M4
24	81-014-4	2	COVER SLIDE BLOCK
25	401-02-040-012	4	SCREW - PAN HEAD TAPTITE - M4 x 12 LONG
26	61-015-4	2	PLUG - INK POD SUPPORT
27	52-015-3	2	CATCH PLATE
28			
29	401-02-040-006	4	SCREW - PAN HEAD TAPTITE - M4 x 6 LONG
30	51-039-3	2	COVER BRACKET
31	83-026-3	4	SIDE COVER BRACKET
32	81-016-3	1	CONNECTOR BRACKET
33	57-031-3	1	SPRING RETENTION BRACKET
34	401-02-040-008	15	SCREW - PAN HEAD TAPTITE - M4 x 8 LONG
35			
36	81-013-4	4	MAGNET HOUSING
37	601-071	4	MAGNET - (TYPE CF 12-00)
38	401-02-030-008	8	SCREW - PAN HEAD TAPTITE - M3 x 8 LONG
39			
40			
41	65-070-ND	1	PROXIMITY SWITCH - (FSN / FRN)
42	84-008-4	2	SPACER PLATE
43	401-02-030-016	2	SCREW - PAN HEAD TAPTITE - M3 x 16 LONG
44	461-01-030	2	NUT - FULL - M3
45	481-030	2	WASHER - PLAIN - M3
46			
47	52-006-3	4	ADJUSTER BLOCK (INKING)
48	481-060	4	WASHER - PLAIN - M6
49	415-01-060-010	4	SCREW - HEX HEAD SET - M6 x 10 LONG
50	415-01-060-025	4	SCREW - HEX HEAD SET - M6 x 25 LONG
51	461-01-060	4	NUT - FULL - M6

NOTES....

3



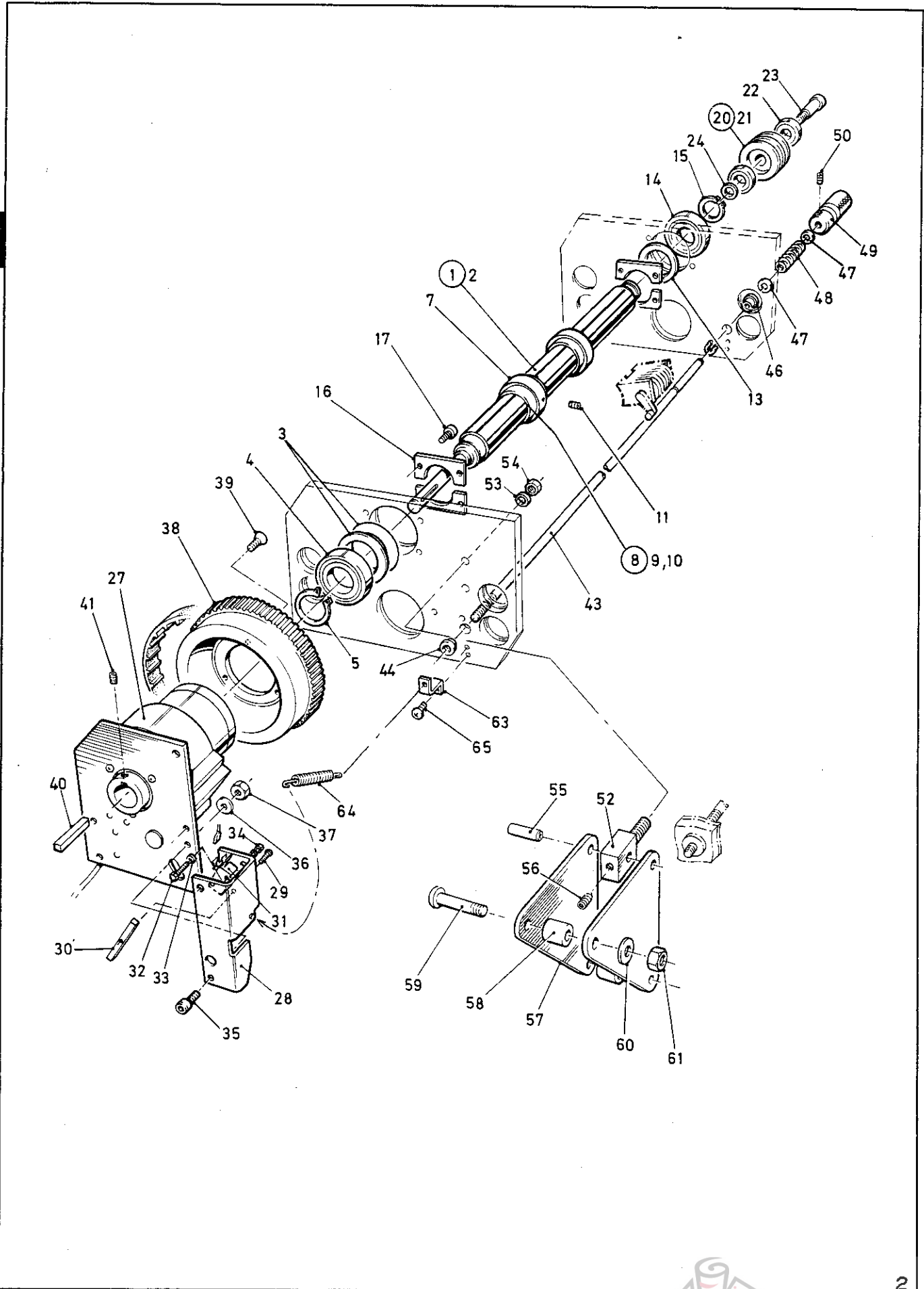
2

NOTE....

◆ Items in italics (*in the list on the following page*) are not available individually as they are part of the preceding sub-assembly, which has a circled item number.

ITEM	PART NUMBER	QTY	DESCRIPTION
①	51-086-2	1	PLATEN ASSEMBLY
2	51-002-2	1	◆ <i>Platen</i>
3	51-005-3	2	◆ <i>Eccentric - Platen Adjustment</i>
4	604-013	2	◆ <i>Disc Spring - (6003 Bearing)</i>
5	602-020	2	◆ <i>Ball Bearing - (6003 ZZ)</i>
6	615-013	1	◆ <i>Circlip - External - (1400 - 17)</i>
7	51-068-3	1	◆ <i>Shim - Platen Eccentric</i>
8	51-044-3	2	ECCENTRIC ADJUSTER PLATE
9	415-01-040-010	6	SCREW - HEX HEAD SET - M4 x 10 LONG
10	481-040	6	WASHER - PLAIN - M4
11	604-023	2	SPRING - TENSION - (LE 045 - D9)
12	415-01-050-035	1	SCREW - HEX HEAD SET - M5 x 35
13	415-01-050-020	1	SCREW - HEX HEAD SET - M5 x 20 LONG
14	461-01-050	4	NUT - PLAIN - M5
15			
16	56-002-3	1	TIMING / CORD PULLEY - (24 XL / Ø5)
17	409-01-050-008	1	SCREW - SOCKET SET FLAT - M5 x 8 LONG
18	410-01-050-008	1	SCREW - SOCKET SET DOG - M5 x 8 LONG
19			
20	602-012	4	OILITE BEARING - (FCM 10 - 6)
21	401-02-040-012	1	SCREW - PAN HEAD TAPTITE - M4 x 12 LONG
22			
23			
②④	51-087-3	1	CAM SHAFT ASSEMBLY
25	51-052-3	1	◆ <i>Cam Shaft</i>
26	51-051-3	1	◆ <i>Cam</i>
27	603-024	1	◆ <i>Tension Pin - Ø3 x 30 Long - Standard</i>
28	51-053-3	1	◆ <i>Cam Operating Knob</i>
29	603-007	1	◆ <i>Tension Pin - Ø3 x 20 Long - Standard</i>
30	403-01-060-008	1	◆ <i>Screw - Cap Head Socket - M6 x 8 Long</i>
31	51-051-3	1	CAM
32	603-019	1	TENSION PIN - Ø3 x 16 LONG - STANDARD
33	401-02-040-010	1	SCREW - PAN HEAD TAPTITE - 4 x 10 LONG
34	604-033	1	SPRING - TORSION - (LTL 054 K2)
35	615-009	1	STARLOCK RETAINER - Ø8 UNCAPPED
36			
③⑦	51-091-3	1	LOCKING SHAFT ASSEMBLY
38	51-046-3	1	◆ <i>Locking Shaft</i>
39	51-050-3	1	◆ <i>Locking Knob</i>
40	408-01-080-015	1	◆ <i>Screw - Socket Set Cone - M8 X 15 Long</i>
41	51-049-X	1	LOCKING BUSH - LONG
42	51-048-X	2	LOCKING BUSH - SHORT
43	51-047-3	1	LOCK NUT
44	461-01-080	2	NUT - FULL - M8

4



2

ITEM	PART NUMBER	QTY	DESCRIPTION
①	51-084-2	1	MAIN SHAFT ASSEMBLY - (CB6)
2	51-071-2	1	◆ <i>Main Shaft - CB6</i>
3	604-012	2	◆ <i>Disc Spring - (6005 Bearing)</i>
4	602-004	1	◆ <i>Ball Bearing - 6005 ZZ</i>
5	615-012	1	◆ <i>Circlip - External - (1400 - 25)</i>
6			
7	51-083-1	2	CLAMP RING - INTERNATIONAL - METRIC
⑧	51-094-3	2	KEY & PIN ASSEMBLY
9	51-079-3	2	◆ <i>Key- Rectangular - 6 x 6 x 38</i>
10	603-033	2	◆ <i>Tension Pin - Ø2 x 8 Long</i>
11	410-01-080-008	2	◆ <i>Screw - Socket Set Dog - M8 x 8 Long</i>
12			
13	51-038-3	1	THRUST WASHER
14	602-004	1	BALL BEARING - 6005 ZZ
15	615-012	1	CIRCLIP - EXTERNAL - (1400 - 25)
16	51-014-3	4	BEARING RETAINER
17	403-01-040-010	8	SCREW - SOCKET CAP HEAD - M4 x 10 LONG
18			
19			
⑩	56-034-3	1	IDLER PULLEY ASSEMBLY
21	56-008-3	1	◆ <i>Inking Drive Idler</i>
22	602-002	2	◆ <i>Ball Bearing - 608 ZZ</i>
23	608-006	1	SHOULDER BOLT - Ø8 x M6 x 25 LONG
24	481-060	1	WASHER M6
25			
26			
27	51-081-3	1	CLUTCH ASSEMBLY - (CB6 12V)
28	81-010-3	1	REACTION PLATE
29	403-01-030-020	1	SCREW - SOCKET CAP HEAD - M3 x 20 LONG
30	81-019-3	1	MICRO SWITCH OPERATING ARM
31	613-191	1	MICRO SWITCH
32	403-01-030-020	2	SCREW - SOCKET CAP HEAD - M3 x 20 LONG
33	481-030	4	WASHER - PLAIN - M3
34	461-01-030	2	NUT - FULL - M3

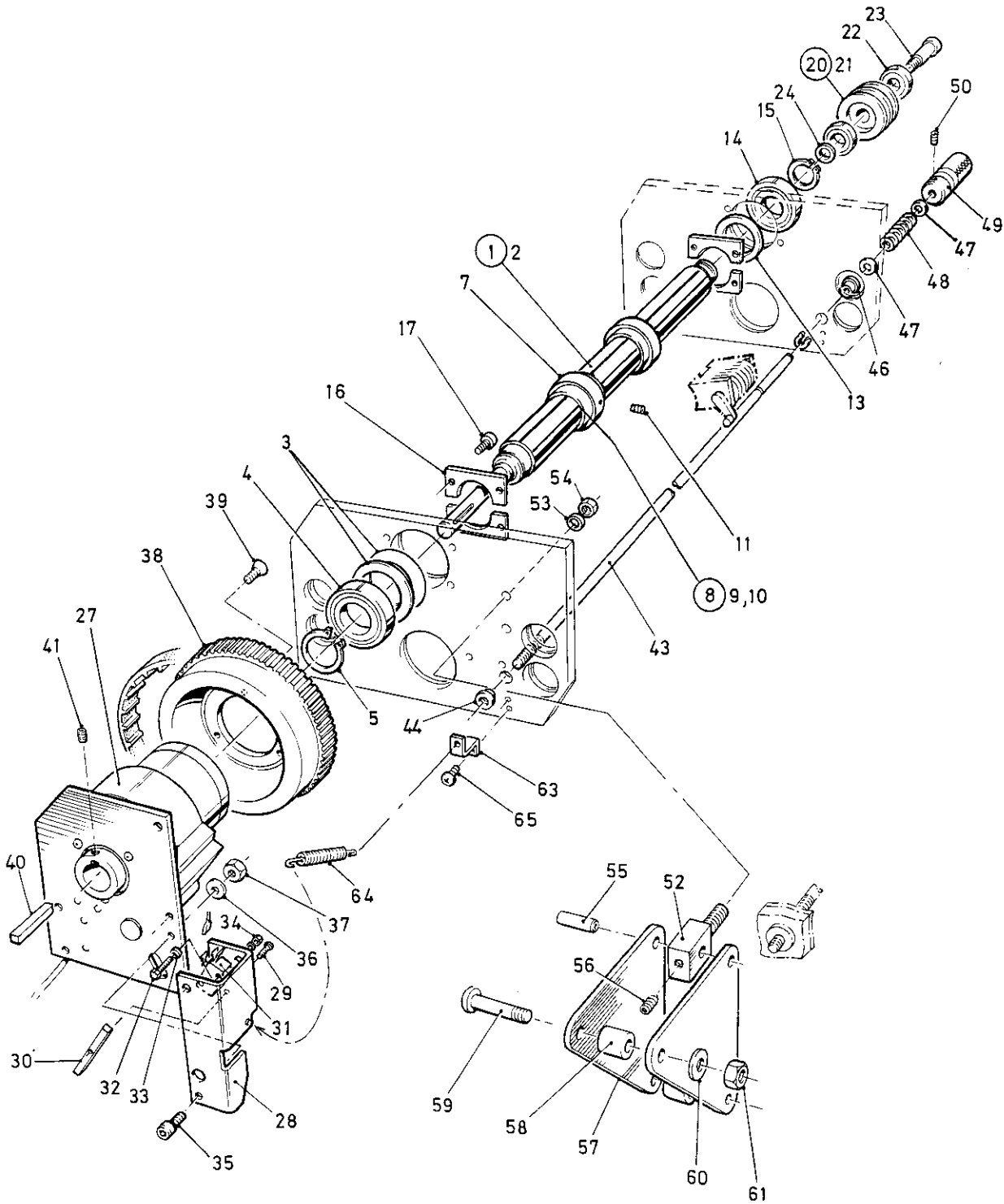
NOTE....

◆ Items in italics are not available individually as they are part of the preceding sub-assembly, which has a circled item number.

THIS SECTION IS CONTINUED ON THE FOLLOWING PAGES ↗

NUMBERER

4

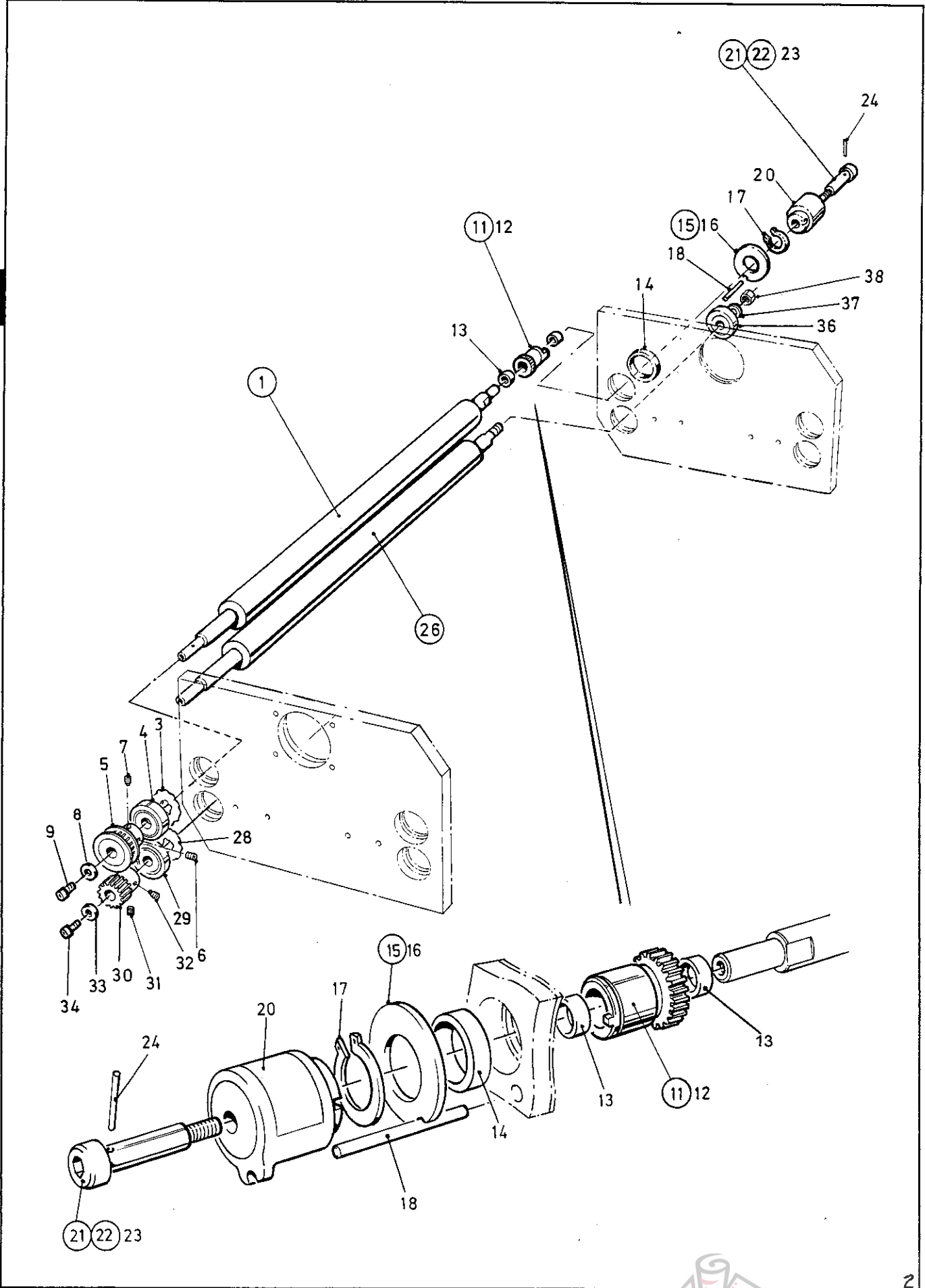


2

 THIS SECTION IS CONTINUED FROM THE PREVIOUS PAGE

ITEM	PART NUMBER	QTY	DESCRIPTION
27	51-081-3	1	CLUTCH ASSEMBLY - (CB6 12V)
28	81-010-3	1	REACTION PLATE
29	403-01-030-020	1	SCREW - SOCKET CAP HEAD - M3 x 20 LONG
30	81-019-3	1	MICRO SWITCH OPERATING ARM
31	613-191	1	MICRO SWITCH
32	403-01-030-020	2	SCREW - SOCKET CAP HEAD - M3 x 20 LONG
33	481-030	4	WASHER - PLAIN - M3
34	461-01-030	2	NUT - FULL - M3
35	403-01-060-016	2	SCREW - SOCKET CAP HEAD - M6 x 16 LONG
36	481-060	2	WASHER - PLAIN - M6
37	461-01-060	2	NUT - FULL - M6
38	56-033-3	1	TIMING PULLEY - 72 XL
39	404-01-060-015	3	SCREW - SOCKET C'SUNK M6 x 15 LONG
40	601-045	1	KEY - RECTANGULAR - 6 x 6 x 32 LONG
41	409-01-050-005	1	SCREW - SOCKET SET FLAT - M5 x 5 LONG
42			
43	51-022-3	1	SHAFT - CLUTCH POSITION ADJUSTMENT
44	51-021-3	1	THREAD BEARING
45			
46	602-018	1	PLAIN BEARING - (OILITE - CM 15 - 8)
47	605-004	2	WASHER - NYLON - Ø8 - (W6264)
48	604-010	1	SPRING - COMPRESSION - (LC - 055 - G9)
49	51-023-3	1	KNOB - CLUTCH POSITION ADJUSTMENT
50	407-01-040-005	2	SCREW - SOCKET SET KN. - M4 x 5 LONG
51			
52	51-018-3	1	PIVOT BLOCK - BELLCRANK
53	481-080	1	WASHER - PLAIN - M8
54	461-01-080	1	NUT - FULL - M8
55	603-031	1	DOWEL PIN - Ø6 x 20 LONG
56	407-01-040-005	1	SCREW - SOCKET SET KN. - M4 x 5 LONG
57	51-082-3	2	BELLCRANK
58	51-017-3	2	REACTION COLLAR
59	405-01-060-025	2	SCREW - BUTTON HEAD - M6 x 25 LONG
60	481-060	2	WASHER - PLAIN - M6
61	461-01-060	2	NUT - FULL - M6
62			
63	51-032-3	1	STOP BRACKET
64	604-055	1	SPRING - EXTENSION - (LEM 150 - D8)
65	401-02-040-010	2	SCREW - PAN HEAD TAPTITE - M4 x 10 LONG

5



2

ITEM	PART NUMBER	QTY	DESCRIPTION
①	81-007-56-2	1	INPUT ROLLER - UPPER
2	<i>81-008-58-2</i>	<i>1</i>	<i>◆ Shaft - Upper Input Roller</i>
3	604-049	1	WAVED WASHER
4	602-003	1	BALL BEARING - 6001 ZZ
5	56-003-3	1	TIMING PULLEY - 16 XL FLANGED
6	409-01-040-004	1	SCREW - SOCKET SET FLAT - M4 x 4 LONG
7	410-01-040-006	1	SCREW - SOCKET SET DOG - M4 x 6 LONG
8	51-095-3	1	CLAMP WASHER
9	403-01-060-012	1	SCREW - SOCKET CAP HEAD - M6 x 12 LONG
10			
⑪	86-012-61-3	1	SLEEVE GEAR ASSEMBLY
12	<i>86-008-3</i>	<i>1</i>	<i>◆ Sleeve Gear - (24T)</i>
13	<i>602-041</i>	<i>2</i>	<i>◆ Needle Roller Bearing - (HK 1210)</i>
14	602-040	1	NEEDLE ROLLER BEARING - (HK 2212)
⑮	86-014-4	1	THRUST WASHER - SLOTTED
16	<i>605-035</i>	<i>1</i>	<i>◆ Thrust Washer - (Ø22 - WC 20 DU)</i>
17	615-029	1	EXTERNAL CIRCLIP - (1400 - 22)
18	603-021	1	SPIROL PIN - Ø3 x 40 LONG
19			
20	623-009	1	CLUTCH - ELECTROMAGNETIC - (MAC 30)
⑳	86-015-4	1	CLUTCH SPINDLE ASSEMBLY
22	<i>86-011-4</i>	<i>1</i>	<i>◆ Clutch Spindle</i>
23	<i>608-013</i>	<i>1</i>	<i>◆◆ Shoulder Bolt - Ø8 x M6 x 30 Long</i>
24	<i>603-043</i>	<i>1</i>	<i>◆ Spirol Pin - Ø2.5 x 12 Long Standard</i>
25			
⑳	61-010-56-2	1	INPUT ROLLER - STANDARD
27	<i>61-012-58-2</i>	<i>1</i>	<i>◆ Shaft- Standard Input Roller</i>
28	604-049	1	WAVED WASHER
29	602-003	1	BALL BEARING - 6001 ZZ
30	56-004-3	1	TIMING PULLEY - 16 XL FLANGELESS
31	409-01-040-004	1	SCREW - SOCKET SET FLAT - M4 x 4 LONG
32	410-01-040-008	1	SCREW - SOCKET SET DOG - M4 x 6 LONG
33	51-095-3	1	CLAMP WASHER
34	403-01-060-012	1	SCREW - SOCKET CAP HEAD - M6 x 12 LONG
35			
36	602-003	1	BALL BEARING 6001 ZZ
37	481-080	1	WASHER - PLAIN - M8
38	461-01-080	1	NUT - FULL - M8

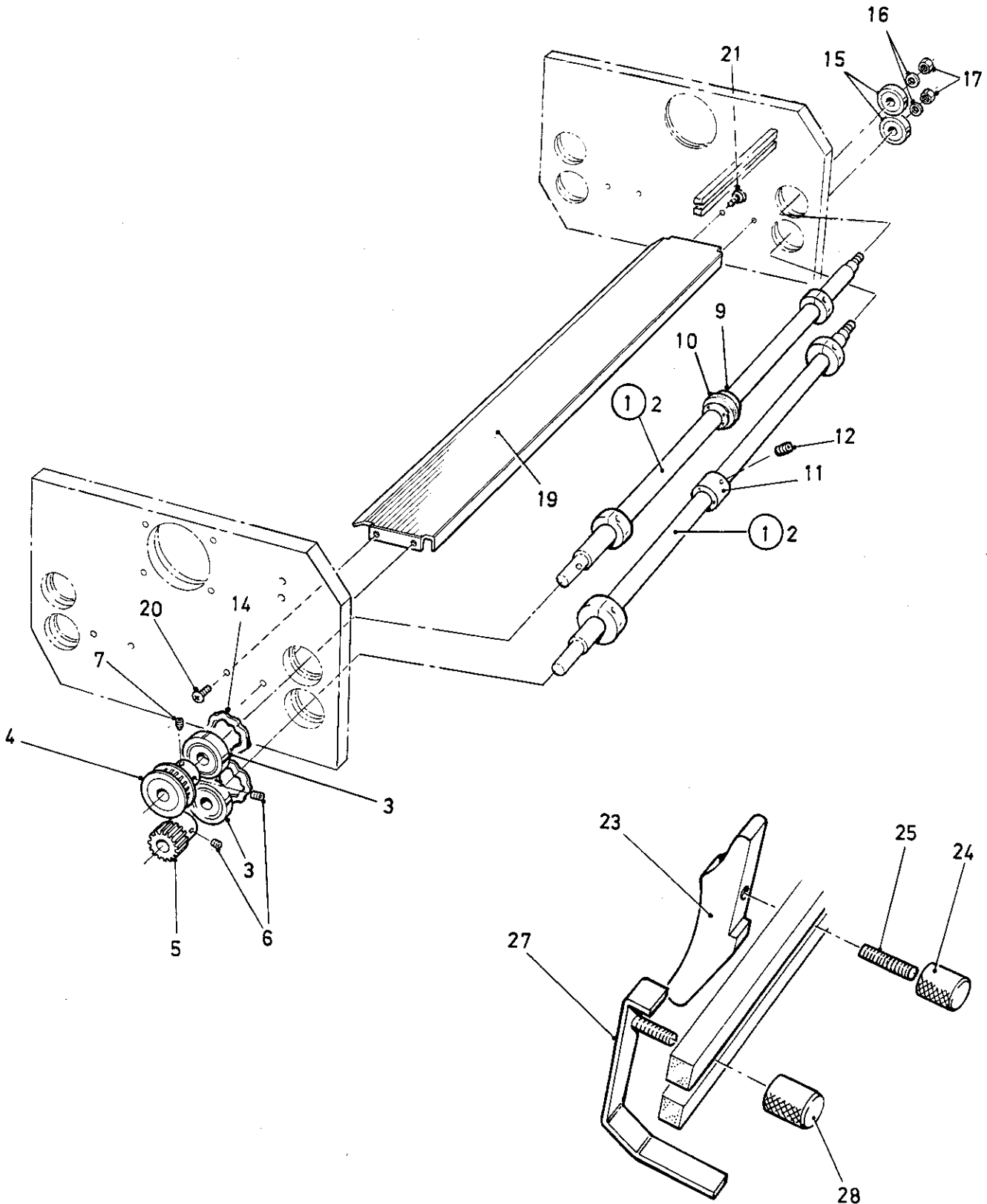
5

②

NOTE....

◆ Items in italics are not available individually as they are part of the preceding sub-assembly, which has a circled item number.

6



ITEM	PART NUMBER	QTY	DESCRIPTION
①	51-088-3	2	OUTPUT SHAFT ASSEMBLY
2	<i>51-003-2</i>	2	◆ <i>Output Shaft</i>
3	<i>602-003</i>	2	◆ <i>Ball Bearing 6001 ZZ</i>
4	56-003-3	1	TIMING PULLEY - 16 XL FLANGED
5	56-004-3	1	TIMING PULLEY - 16 XL FLANGELESS
6	409-01-040-004	1	SCREW - SOCKET SET FLAT - M4 x 4 LONG
7	410-01-040-006	1	SCREW - SOCKET SET DOG - M4 x 6 LONG
8			
9	08-024-3	5	PERFORATOR DRIVE HUB
10	08-015-3	5	TYRE
11	08-057-3	5	PERFORATOR DRIVE WHEEL
12	409-01-040-006	10	SCREW - SOCKET SET FLAT - M4 x 6 LONG
13			
14	604-049	2	WAVED WASHER - (6001 BEARING)
15	602-003	2	BALL BEARING - 6001 ZZ
16	481-080	2	WASHER - PLAIN - M8
17	461-01-080	2	NUT - FULL - M8
18			
19	51-025-2	1	OUTPUT BED
20	401-15-006-312	2	SCREW - PAN HEAD PLASTITE - #6 x 5/16" LG.
21	401-02-040-008	2	SCREW - PAN HEAD TAPTITE - M4 x 8 LONG
22			
23	81-015-3	2	ADVANCE CAM
24	01-115-3	2	UNIVERSAL KNOB BLACK - M5
25	409-01-050-030	2	SCREW - SOCKET SET FLAT - M5 x 30 LONG
26			
27	81-009-3	2	PERFORATOR STRIPPER
28	01-115-3	2	UNIVERSAL KNOB BLACK - M5

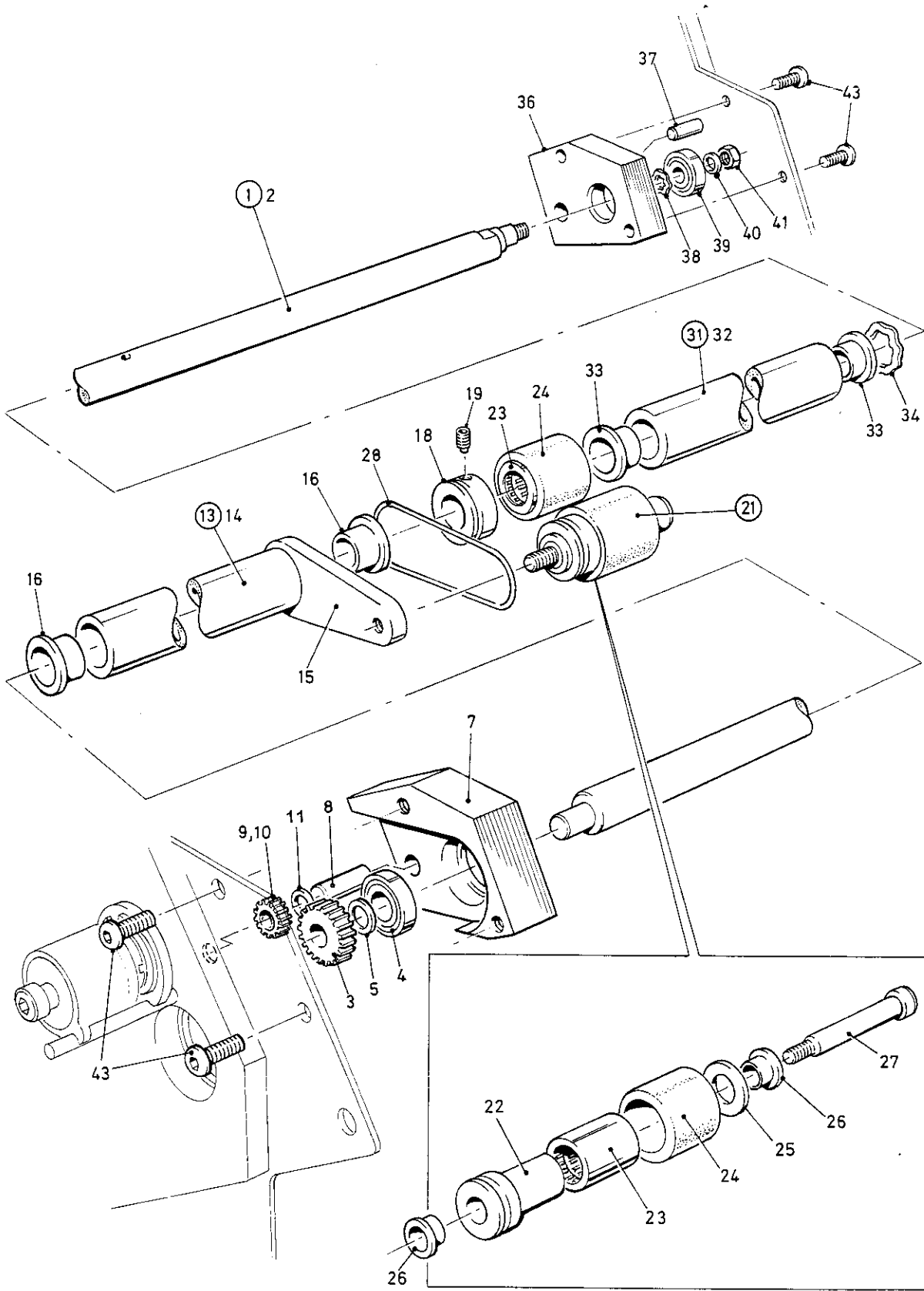
NOTES....

◆ Items in italics are not available individually as they are part of the preceding sub-assembly, which has a circled item number.

TIP....

If you run wide sheets (ie-A3 Landscape) or you use more than two perforating sets on the same Job, you may like to order additional strippers - items 27 & 28 in the above list.

7

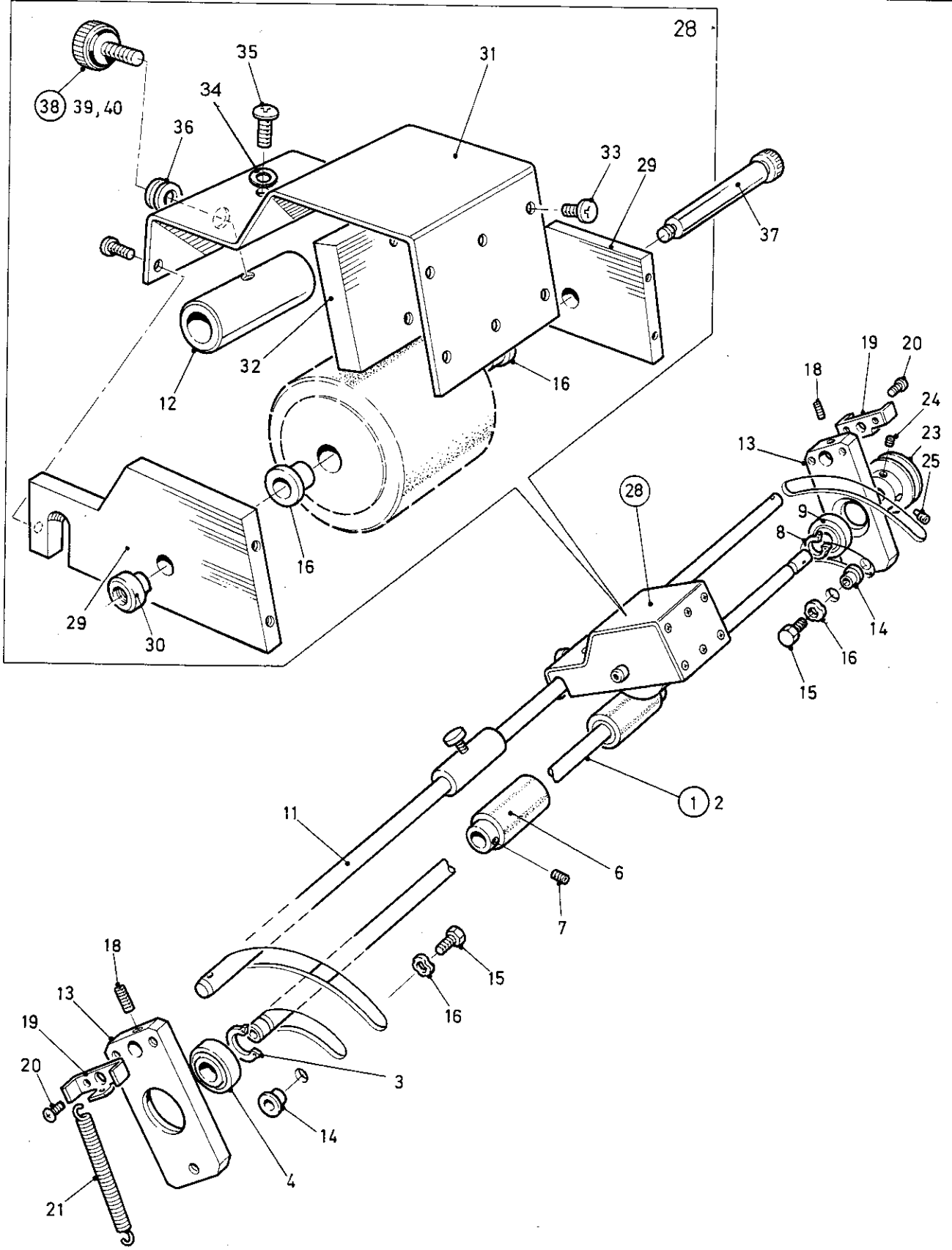


NOTES....

◆ Items in *italics* (*in the list on the following page*) are not available individually as they are part of the preceding sub-assembly, which has a circled item number.

ITEM	PART NUMBER	QTY	DESCRIPTION
①	86-010-61-ND	1	FRICTION SHAFT ASSEMBLY
2	86-035-3	1	◆ Friction Drive Shaft
3	86-007-4	1	◆ Drive Gear - (30 Tooth)
4	602-002	1	◆ Ball Bearing - 608 ZZ
5	605-004	1	◆ Nylon Washer - Ø8 - (W 6264)
6			
7	86-033-3	1	GEARCASE
8	603-047	1	DOWEL PIN - Ø8 x 20 LONG
9	86-009-4	1	IDLER GEAR - (24 TOOTH)
10	602-016	1	D U BUSH - (MB 0808 DU)
11	605-004	1	NYLON WASHER - Ø8 - (W 6264)
12			
⑬	86-026-ND	1	SUPPORT ARM ASSEMBLY
14	86-025-4	1	◆ Support Tube
15	86-024-4	1	◆ Support Arm
16	602-043	2	◆ DU Bush - Flanged - (FMB 1612)
17			
18	86-021-4	1	CORD DRIVE DRUM
19	409-01-040-004	1	SCREW - SOCKET SET FLAT - M4 x 4 LONG ②
20			
⑳	86-020-ND	1	CORD DRIVE HUB ASSEMBLY
22	86-022-4	1	◆ Cord Drive Hub
23	623-010	2	◆ Drawn Cup Roller Clutch - (HFL 1626)
24	86-032-4	2	◆ FRICTION TYRE - UPPER
25	605-037	1	◆ Nylon Washer - Ø10 - (041 - 3825)
26	602-042	2	◆ DU Bush - Flanged - (FMB 0809.5)
27	608-014	1	SHOULDER BOLT - Ø8 x M6 x 40 LONG
28	609-007	1	'O' RING - (DRIVE BELT)
29			
30			
⑳	86-031-ND	1	COVER TUBE ASSEMBLY
32	86-030-4	1	◆ Cover Tube
33	602-043	2	◆ DU Bush - Flanged - (FMB 1612)
34	604-056	1	WAVED WASHER - Ø24 - (EPL13)
35			
36	86-034-3	1	BEARING CASE
37	603-047	1	DOWEL PIN - Ø8 x 20 LONG
38	604-050	1	WAVED WASHER - Ø22 - (EPL 12)
39	602-002	1	BALL BEARING 608 ZZ
40	481-060	1	WASHER - PLAIN - M6
41	462-01-060	1	NUT - HALF - M6
42			
43	403-01-050-012	4	SCREW - SOCKET CAP HEAD - M5 x 12 LONG ②

8



2

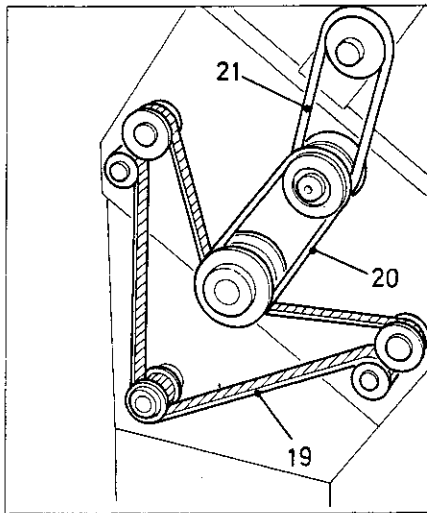
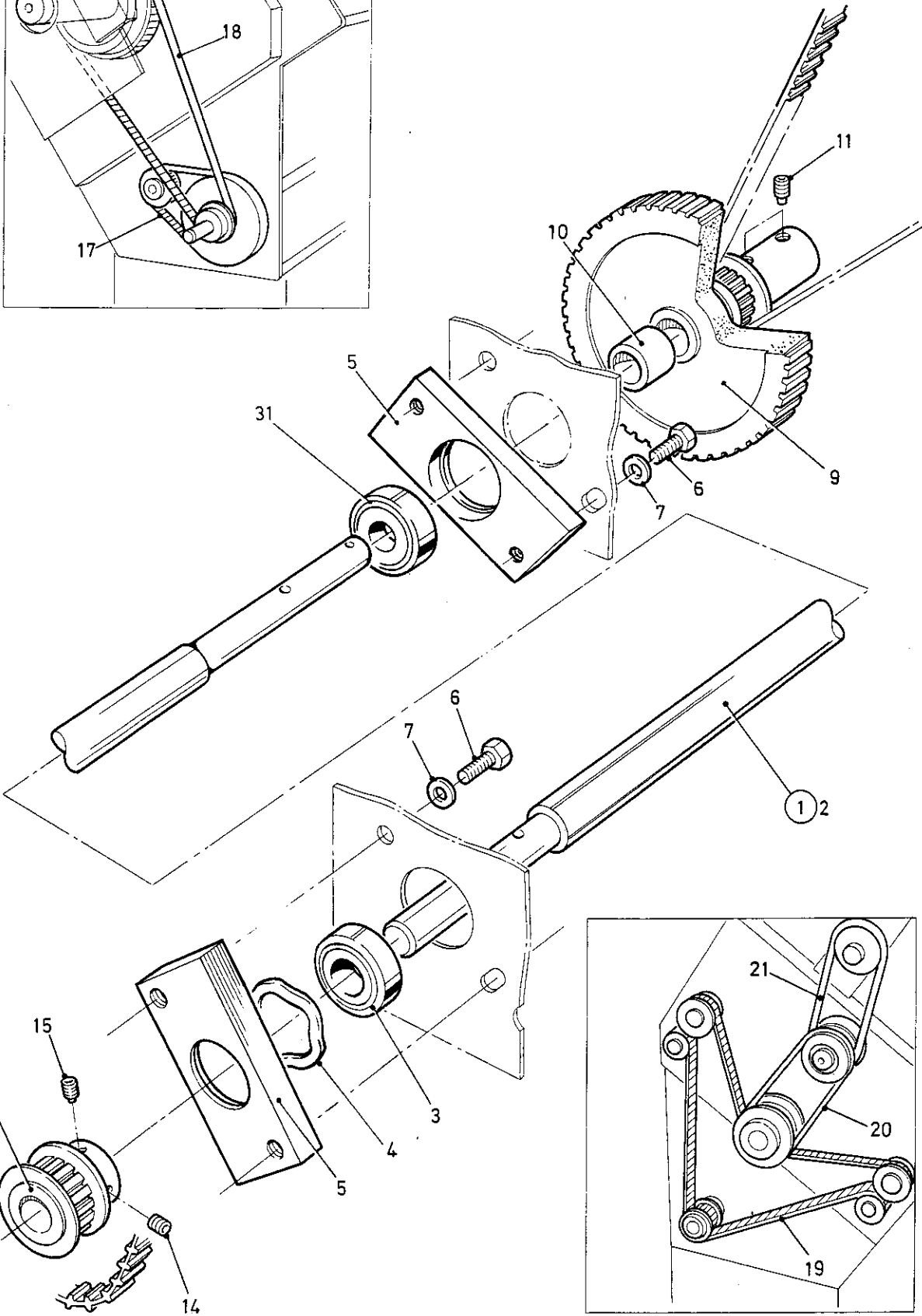
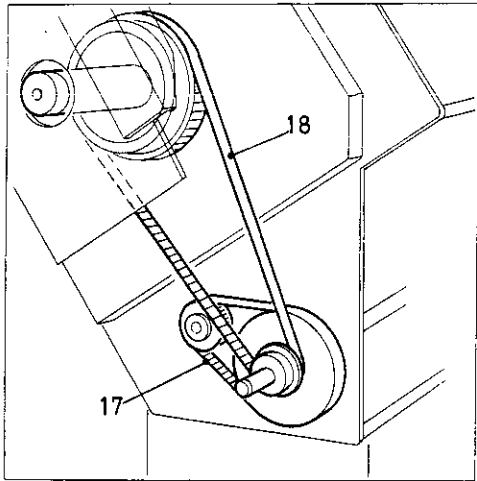
TIP....

Ink rollers are an accessory, and are available in various colours and types. They may be supplied in your dispatch kit, (see section 17) or from your dealer.

ITEM	PART NUMBER	QTY	DESCRIPTION
①	57-032-3	1	INK TRANSFER SHAFT ASSEMBLY
2	<i>57-003-3</i>	1	♦ <i>Shaft - ink Transfer</i>
3	<i>615-015</i>	1	♦ <i>Circlip - External - (1400-12)</i>
4	<i>602-003</i>	1	♦ <i>Ball Bearing 6001 ZZ</i>
5			
6	57-004-3	2	INK TRANSFER ROLLER
7	409-01-040-004	2	SCREW - SOCKET SET FLAT - M4 x 4 LONG
8	615-015	1	CIRCLIP EXT. 1400-12
9	602-003	1	BALL BEARING 6001 ZZ
10			
11	57-019-3	1	TIE BAR
12	58-005-4	2	LOCATING COLLAR
13	57-001-3	2	SUPPORT ARM
14	602-019	2	PLAIN BEARING - FLANGED - OILITE FCM 8 - 6
15	415-01-060-015	2	SCREW - HEX HEAD SET - M6 x 15 LONG
16	605-006	2	NYLON SHOULDER WASHER - Ø12
17			
18	409-01-040-020	2	SCREW - SOCKET SET FLAT - M4 x 20 LONG
19	57-006-3	2	STOP BRACKET - INKING
20	401-02-040-008	4	SCREW - PAN HEAD TAPTITE - M4 x 8 LONG
21	604-015	1	SPRING - EXTENSION - (LE - 041 - C10)
22			
23	56-032-3	1	INKING DRIVE PULLEY
24	409-01-040-004	1	SCREW - SOCKET SET FLAT - M4 x 4 LONG
25	411-01-040-006	1	SCREW - SOCKET SET DOG - M4 x 6 LONG
26/27			
28	58-008-65-ND	2	INKING POD ASSEMBLY
②9	<i>58-002-3</i>	4	♦ <i>Side Arm</i>
30	<i>58-009-4</i>	2	♦ <i>Bush - Ink Pod</i>
31	<i>58-003-3</i>	2	♦ <i>Cover Chassis</i>
32	<i>58-004-4</i>	2	♦ <i>Weight - Rectangular</i>
33	<i>401-02-030-006</i>	16	♦ <i>Screw - Pan Head Taptite - M3 x 6 ong</i>
-			
34	481-040	1	WASHER - PLAIN - M4
35	401-02-040-006	2	SCREW - PAN HEAD TAPTITE - M4 x 6 LONG
36	601-075	2	GROMMET - Ø5.6 - (4232 AF)
37	608-007	2	SHOULDER BOLT - Ø8 x M6 x 50 LONG
③8	28-009-ND	2	KNOB ASSEMBLY
39	<i>606-021</i>	2	♦ <i>Knurled Knoblet - M5</i>
40	<i>403-01-050-016</i>	2	♦ <i>Screw - Socket Cap Head - M5 x 16 Long</i> ②

NOTE....

♦ Items in italics are not available individually as they are part of the preceding sub-assembly, which has a circled item number.



ITEM	PART NUMBER	QTY	DESCRIPTION
①	81-018-3	1	DRIVE SHAFT ASSEMBLY
2	<i>81-003-3</i>	1	◆ <i>Drive Shaft</i>
3	<i>602-003</i>	2	◆ <i>Ball Bearing - 6001 ZZ</i>
4	604-049	1	WAVED WASHER - (6001 BEARING)
5	81-002-3	2	BEARING HOUSING - (DRIVE SHAFT)
6	415-01-060-016	4	SCREW - HEX HEAD - M6 x 16 LONG
7	481-060	4	WASHER - PLAIN - M6
8			
9	86-002-3	1	MAIN DRIVE PULLEY
10	01-056-3	1	SPACER
11	410-01-050-006	1	SCREW - SOCKET SET DOG - M5 x 6 LONG
12			
13	56-003-3	1	TIMING PULLEY - 16 XL FLANGED
14	409-01-040-004	1	SCREW - SOCKET SET FLAT - M4 x 4 LONG
15	410-01-040-006	1	SCREW - SOCKET SET DOG - M4 x 6 LONG
16			
17	607-017	1	TIMING BELT - 120 XL 037
18	607-001	1	TIMING BELT - 260 XL 037
19	607-014	1	TIMING BELT - TWIN GRIP - D280 XL 037
20	56-014-3	1	DRIVE BELT - PLATEN TO IDLER - Ø5
21	56-015-3	1	DRIVE BELT - IDLER TO INK SHAFT - Ø5

6

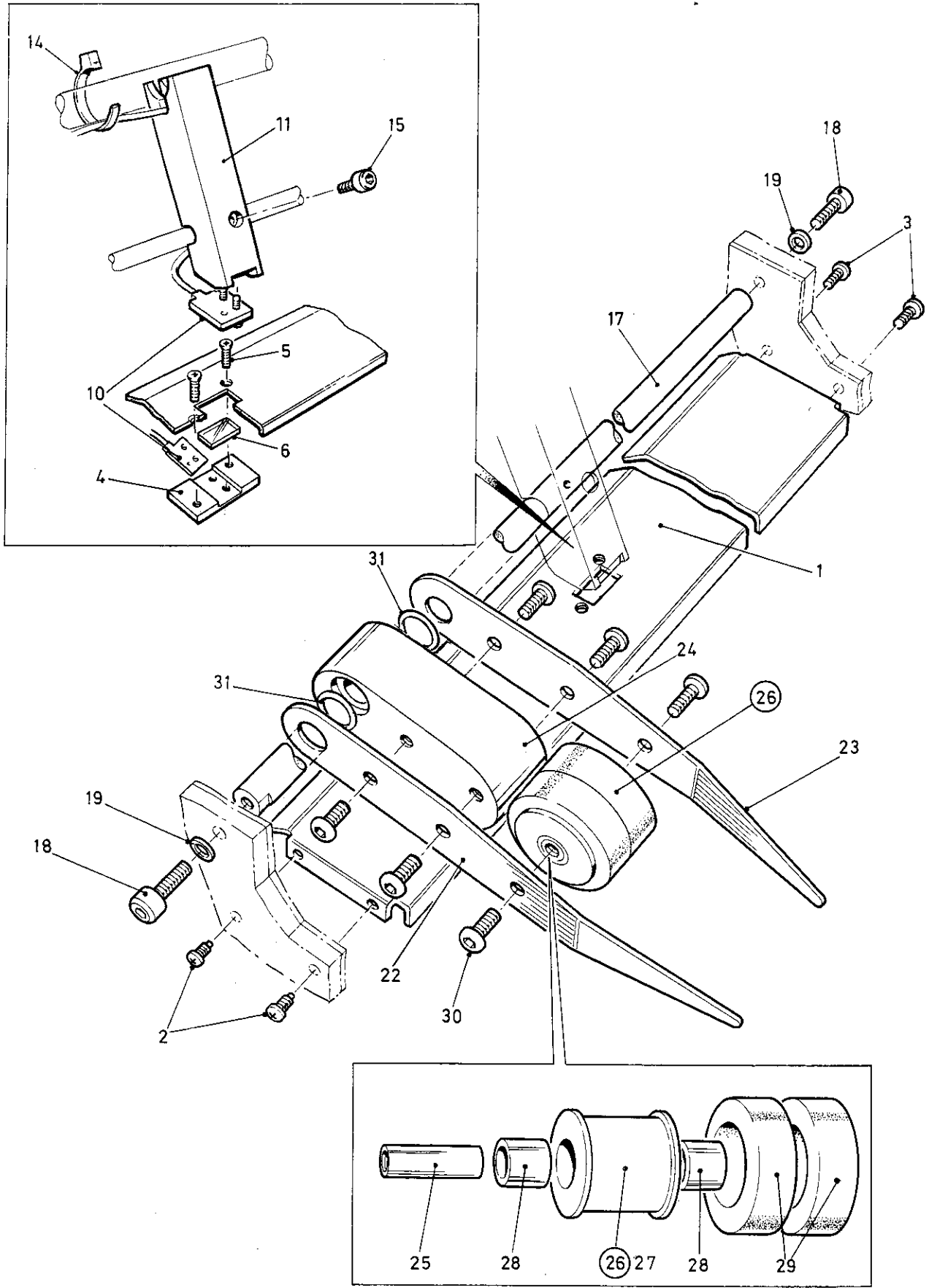
2

NOTES....

◆ Items in italics are not available individually as they are part of the preceding sub-assembly, which has a circled item number.

TIP....

The Timing & Drive Belts (items 17 to 21) used to drive your machine are precision components but are subject to wear and deterioration in normal use. In order to minimise down time, you may like to keep a spare set handy.



10

ITEM	PART NUMBER	QTY	DESCRIPTION
1	81-012-1	1	INPUT BED
2	401-15-006-312	2	SCREW - PAN HEAD PLASTITE - #6 x 5/16" LG.
3	401-02-040-008	2	SCREW - PAN HEAD TAPTITE - M4 x 8 LONG
4	81-020-3	1	SENSOR MOUNTING (LOWER)
5	402-02-030-006	2	SCREW - C.SUNK TAPTITE - M3 x 6 LONG
⑥	81-021-3	1	SENSOR LENS
7			
8			
9			
10	613-310	1	SENSOR SET - (EMITTER & RECEIVER)
11	61-016-3	1	SENSOR MOUNTING - TOP
12	613-152	1	HEAT SHRINK SLEEVING - Ø2,4 - (RS 398-212)
13	613-098	1	PVC SLEEVING - Ø4 - (RS 399 - 502)
14			
15	403-01-030-012	1	SCREW - SOCKET CAP HEAD - M3 x 12 LONG
16			
17	52-009-3	1	SUPPORT SHAFT
18	403-01-060-025	2	SCREW - SOCKET CAP HEAD - M6 x 25 LONG
19	481-060	2	WASHER - PLAIN - M6
20			
21			
22	65-040-4	2	SMOOTHER RAIL - OPERATOR SIDE
23	65-041-4	2	SMOOTHER RAIL - CLUTCH SIDE
24	61-017-4	2	HOLD DOWN SMOOTHER
25	65-043-4	2	SPINDLE - SMOOTHER
②⑥	65-045-ND	2	SMOOTHER WHEEL ASSEMBLY
27	<i>51-030-3</i>	2	♦ <i>Smoother Wheel</i>
28	<i>602-016</i>	4	♦ <i>D U Bush - (MB 0808 DU)</i>
29	08-015-3	4	♦ TYRE
30	405-01-050-010	12	SCREW - BUTTON HEAD - M5 x 10 LONG
31			
32	609-003	4	'O' RING - (202-636)

10

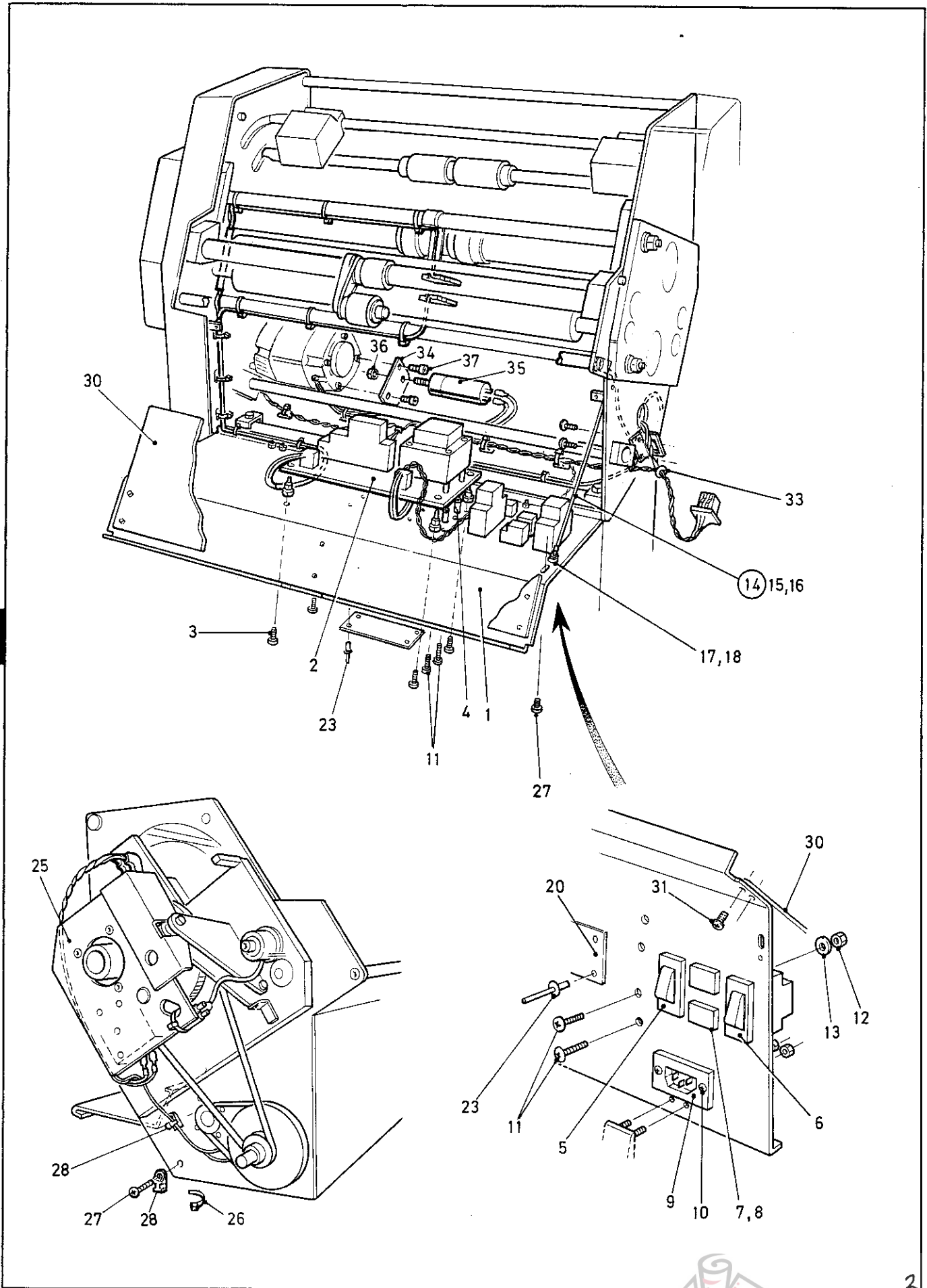
e

NOTES....

♦ Items in italics are not available individually as they are part of the preceding sub-assembly, which has a circled item number.

TIP....

The upper & lower Sensors (*only available as a matched set - item 10*) are likely to collect dust during use, so before attempting to replace them, ensure they are clean and that all mountings are secure.



11

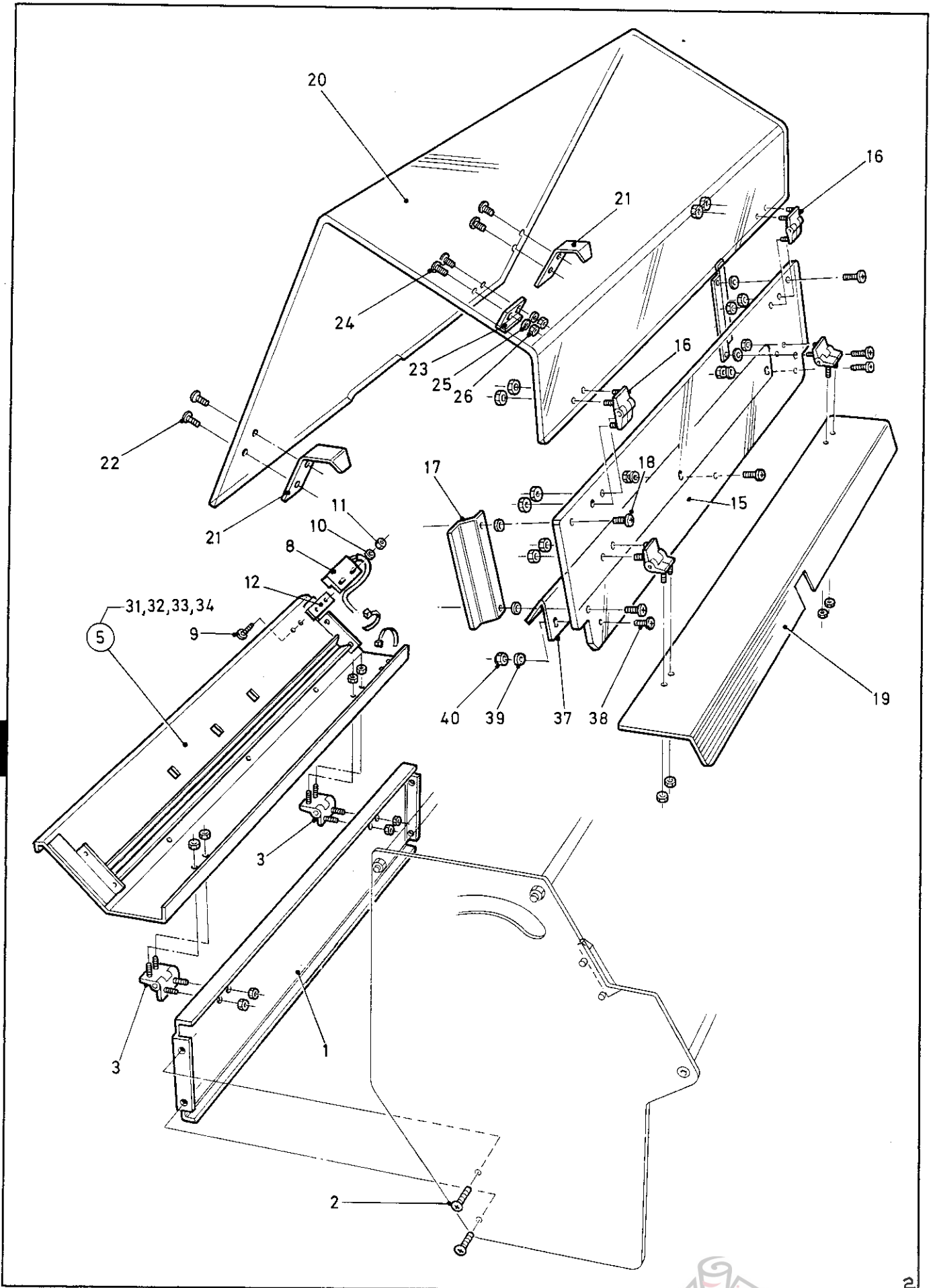
ITEM	PART NUMBER	QTY	DESCRIPTION
1	83-029-02-1	1	FRONT PANEL
2	84-003-3	1	CONTROL PCB - 220v FRICTION
3	401-13-006-375	4	SCREW - PAN HEAD SELF TAP - #6 x 3/8" LG
4	603-045	2	PILLAR - M4 x 9.5 LONG
5	613-264	1	ISOLATOR - (220v - RED ROCKER)
6	613-241	1	SYSTEM SWITCH - (WNL 22 - 220v - 50Hz - RED)
7	613-059	2	FUSE HOLDER - (413 - 254)
8	613-024	2	FUSE - 1 AMP - 20mm - (F 151490-1A)
9	613-205	1	APPLIANCE INLET (10 AMP CEE - 22)
10	402-02-030-006	2	SCREW - C.SUNK POZI TAPTITE - M3 x 6 LONG
11	401-02-040-016	3	SCREW - PAN HEAD TAPTITE - M4 x 16 LONG
12	461-01-040	2	NUT - FULL - M4
13	483-040	2	WASHER - SPRING - M4
14	84-006-4	1	SUPPORT STRAP
15	601-001	1	AIRCRAFT CABLE - (7061361)
16	613-125	2	EYELET - Ø4 - RED - (209521)
17	401-02-040-010	1	SCREW - PAN HEAD TAPTITE - M4 x 10 LONG
18	461-01-040	1	NUT - FULL - M4
19			
20	65-092-01-3	1	■ <i>Specification Plate - (MSL)</i>
21/22			
23	615-022	4	◆ <i>Pop Rivet - 1/8" Dia. (Ø3,2)</i>
24			
25	613-029	1	CABLE TIE MOUNTING - (149-341)
26	613-027	30	CABLE TIE
27	401-02-040-008	2	SCREW - PAN HEAD TAPTITE - M4 x 8 LONG
28	613-339	3	MOUNTING EYELET - CABLE TIE
29			
30	83-027-02-2	1	PROTECTION PLATE
31	401-02-040-006	6	SCREW - PAN HEAD TAPTITE - M4 x 6 LONG
32			
33	601-076	2	SNAP BUSH - Ø19
34	84-013-A	1	CAPACITOR MOUNTING PLATE
35	674-115	1	CAPACITOR - 2.5uF (400V AC)
36	481-080	1	NUT - FULL - M8
37	403-05-010-625	2	SCREW - CAP HEAD - # 10 / 32 UNF x 5/8" LONG

NOTE....

■ The Specification Plate - item 20 - & its associated parts are not available as spares.

TIP....

The Fuses (item 8) used to protect your machines circuits are of a Fast Blow type and may occasionally fail without reason. Its always a good idea to keep a few spares of the correct value handy to save unnecessary down time. ②



13

ITEM	PART NUMBER	QTY	DESCRIPTION
1	83-010-02-2	1	REAR PANEL
2	401-02-040-008	4	SCREW - PAN HEAD TAPTITE - M4 x 8 LONG
3	606-019	2	HINGE - ADJUSTABLE
4			
⑤	83-011-3	1	OUTPUT GUARD ASSEMBLY
6			
7			
8	65-070-ND	1	PROXIMITY SWITCH - (FSN / FRN)
9	401-02-030-010	2	SCREW - PAN HEAD TAPTITE - M3 x 10 LONG
10	481-030	2	WASHER - PLAIN - M3
11	461-01-030	2	NUT - FULL - M3
12	84-008-4	1	SPACER PLATE
13			
14			
15	83-021-2	1	FRONT GUARD
16	606-019	4	HINGE - ADJUSTABLE
17	83-016-4	2	COVER SLIDE
18	401-02-040-008	4	SCREW - PAN HEAD TAPTITE - M4 x 8 LONG
19	83-030-02-2	1	COVER - FRICTION FEED
20	83-020-1	1	MAIN GUARD
21	83-019-4	2	COUNTER PLATE
22	401-02-040-008	4	SCREW - PAN HEAD TAPTITE- M4 x 8 LONG
23	601-021	1	MAGNETIC ACTUATOR - (RS 338 - 759)
24	401-02-030-012	2	SCREW - PAN HEAD TAPTITE - M3 x 12 LONG
25	481-030	2	WASHER - PLAIN - M3
26	461-01-030	2	NUT - FULL - M3
27			
28			
29			
30/35			
36			
37	83-033-2	1	INPUT STRIPPER - FRN
38	401-02-040-012	3	SCREW - PAN HEAD TAPTITE - M4 x 12 LONG
39	481-040	3	WASHER - PLAIN - M4
40	461-01-040	3	NUT - FULL - M4
41			
42			

NOTE....

- ◆ Items in italics are not available individually as they are part of the preceding sub-assembly, which has a circled item number.