

Graphic Installation Instructions

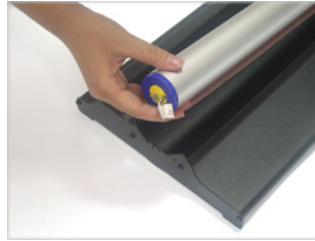
The GrandStand



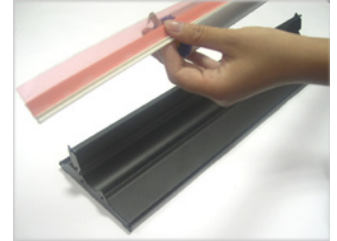
1. Get the hex key from underneath the base.



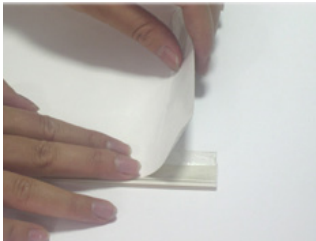
2. Remove the hex screws on both sides with the hex key.



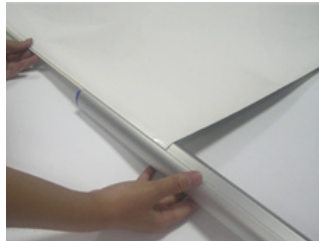
3. Open the lid and remove the graphic roller.



4. Pull out the panel strip from the graphic roller.



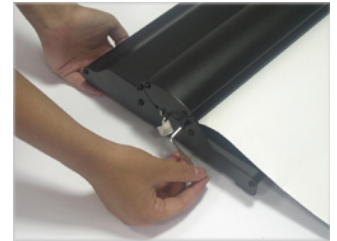
5. Remove the liner on the front tape and press the graphic on the panel strip. Do the same to the top panel strip (squarely).



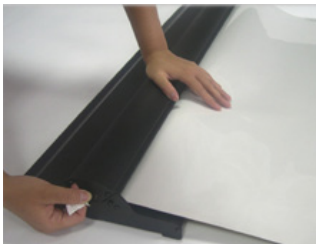
6. Insert the bottom panel strip back into the graphic roller.



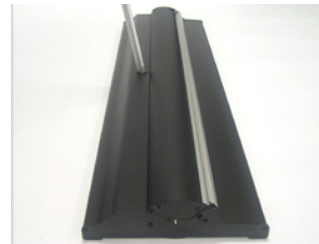
7. Insert the top panel strip into the top profile. With a piece of clear tape on the back, center and secure the graphic to keep it from sliding.



8. Put the graphic roller back into the base and secure the lid on both sides with the hex key.



9. Pull out the locking key and roll the graphic slowly into the base. Gently hold on to the graphic to keep it from retracting too quickly.



10. Insert the pole into the base.



11. Pull out the graphic from the base and keep one foot on the base to prevent it from pulling up.



12. Insert the top into the top profile. Installation is now complete.