

# ***Xyron Personal Cutting System - 23412***

Quick Tips



*Provided by*

**MyBinding.com**  
*When Image Matters.*

Call Us at 1-800-944-4573

fig 3.2

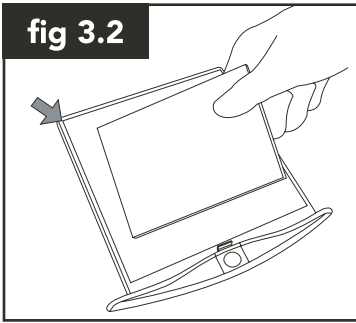


fig 4.2

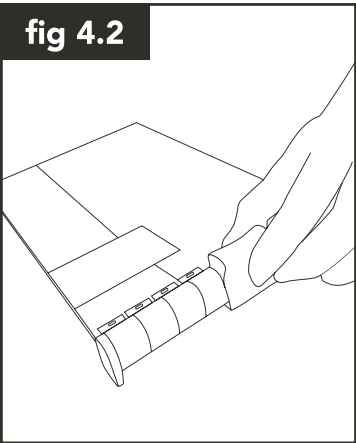


fig 4.3

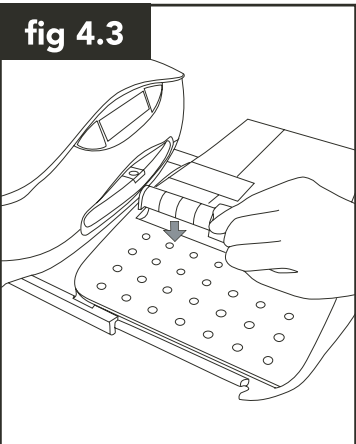
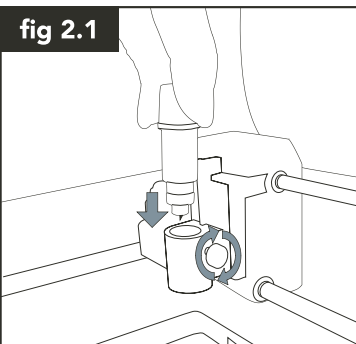


fig 2.1



## Personal Cutting System FAQ's and Quick Tips

### • How often will I need to change the blade?

- If the machine is used for standard non-woven papers the blade should last for over 500 cuts.

### • How do I remove and load a new cut blade?

- To remove the old blade open the lid and locate the thumbscrew on the right side of the orange blade holder. This screw locks the blade securely into the holder. Loosen the screw enough to pull the orange blade up from the top. Be careful to avoid the end as a small portion of the blade is exposed. Refer to the User Guide for information on blade disposal and replace with a new blade; making sure to tighten the thumbscrew back into place.

### • How often do I need to change my cutting mat?

- If the machine is used to cut standard non-fibrous paper the cutting mat should last for over 250 cuts. The cutting mat can be removed and rotated to maximize the "stickiness" left on other portions of the mat. Make sure the mat is positioned in the upper left hand corner of the tray.

### • How do I load a new cutting mat?

- Remove the old cut mat by grasping the used mat in the corner marked by the pink arrow. Make sure you have removed all the layers of the mat. Note the marked corner on your Personal Cutting System cut tray that is now exposed. Remove the clear non-printed liner first and place the mat onto the tray such that the cut corner lines up with the outside edge of the colored section. Apply firm pressure to smooth out any air bubbles and to assure a secure bond. Remove the clear printed liner to expose the tacky cutting surface

### • My machine did not have a cutting tray?

- Your Personal Cutting System was shipped without the cutting tray installed. The tray is located inside the box along with your Design Books. Please locate and install as shown here!

### Problem: The paper doesn't stay stuck during cutting

- ✓ The cut mat may be dirty. Try the following:
  - o Clean fibers by applying standard tape and lifting the tape off quickly
- ✓ The paper may be wax coated, have a lot of soft fibers or have some other coating on it.
  - o Turn the paper upside down to help adhere to the cut mat.
- ✓ Replace the cut mat (see fig 3.2)

### Problem: The machine LCD keeps showing "no such shape"

- ✓ The Design Book may not be installed properly. Try the following:
  - o The Design Book has small tabs (see fig 4.2) that fit into the book tray sensors (see fig 4.3) Locate the word "push" on the book tabs and push down toward the tray to engage the sensor.
  - o Turn the machine off, then on again. The Design Book may not have been recognized the first time. The pages may not be overlaying the buttons correctly due to an improper orientation of the book. Remove the Design Book from the Book Dock and re-install.
  - o There may be debris in the book tray connector. Use a commercial air can to clean the connector. DO NOT use any metal to retrieve debris as this will void the product warranty.

### Problem: The machine does not cut consistently?

- ✓ The cutting blade may be loose.
  - o Open the lid, firmly press the blade into place and tighten the screw on the right side of the orange blade holder. (See fig 2.1)
- ✓ The paper may be too thick.
  - o Paper should not exceed 80-pound cover weight or .010 inches in thickness
- ✓ The cutting mat may need to be replaced.
  - o If the cutting mat has a lot of wear this can cause the blade to cut inconsistently. Replace the cutting mat.
- ✓ The cutting blade could be dull.
  - o Change the blade.
- ✓ There may be adhesive or paper shards on the blade.
  - o Remove the blade, use the included Shape Removal Tool to pull off any visible paper, and wipe carefully with Isopropyl Alcohol.